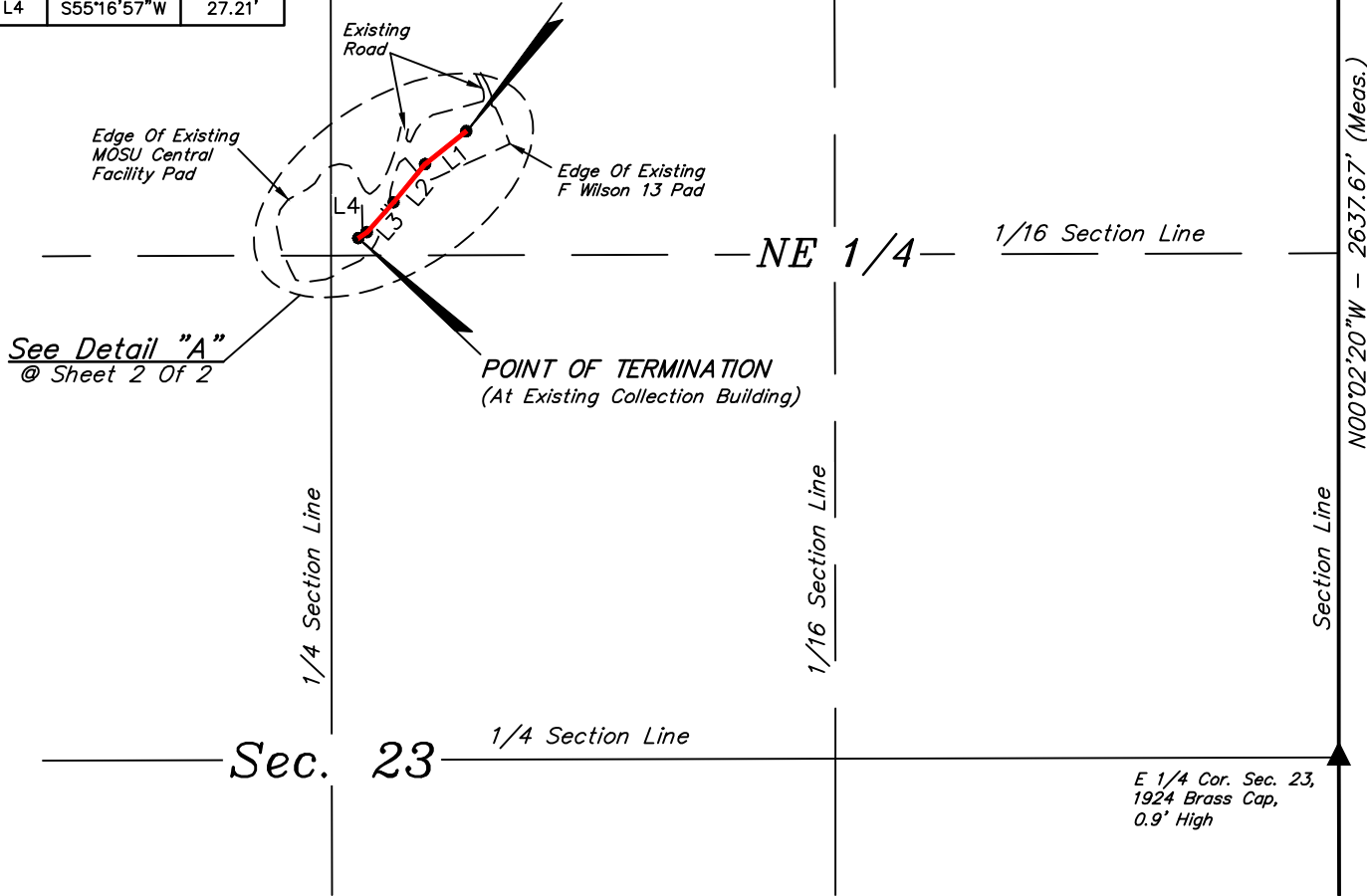


NW Cor. Sec. 23,
1987 Brass Cap

NE Cor. Sec. 23,
1924 Brass Cap,
0.9' High

S89°52'16"W - 5271.39' (Meas.)

LINE TABLE		
LINE	DIRECTION	LENGTH
L1	S51°19'57"W	137.93'
L2	S39°27'26"W	129.67'
L3	S41°53'05"W	104.89'
L4	S55°16'57"W	27.21'



AS-BUILT OIL LINE DESCRIPTION

BEGINNING AT A POINT IN THE NW 1/4 NE 1/4 OF SECTION 23, T12N, R100W, 6th P.M., WHICH BEARS S66°20'01"W 2489.92' FROM THE NORTHEAST CORNER OF SAID SECTION 23, THENCE S51°19'57"W 137.93'; THENCE S39°27'26"W 129.67'; THENCE S41°53'05"W 104.89'; THENCE S55°16'57"W 27.21' TO A POINT IN THE NW 1/4 NE 1/4 OF SAID SECTION 23 AND THE POINT OF TERMINATION, WHICH BEARS S63°28'23"W 2864.57' FROM THE NORTHEAST CORNER OF SAID SECTION 23. BASIS OF BEARINGS IS THE NORTH LINE OF SAID SECTION 23 WHICH IS ASSUMED TO BEAR S89°52'16"W.

POINT OF BEGINNING BEARS S66°20'01"W 2489.92' FROM THE NORTHEAST CORNER OF SECTION 23, T12N, R100W, 6th P.M.

POINT OF TERMINATION BEARS S63°28'23"W 2864.57' FROM THE NORTHEAST CORNER OF SECTION 23, T12N, R100W, 6th P.M.



LENGTH TABLE	
FEET	RODS
399.70	24.22

▲ = SECTION CORNERS LOCATED.

CERTIFICATE
THIS IS TO CERTIFY THAT THE ABOVE PLAT WAS PREPARED FROM FIELD NOTES OF ACTUAL SURVEYS MADE BY ME OR UNDER MY SUPERVISION AND THAT THE SAME ARE TRUE AND CORRECT TO THE BEST OF MY KNOWLEDGE AND BELIEF.



FILE: W - 2343-A

Sheet 1 of 2



UELS, LLC
Corporate Office * 85 South 200 East
Vernal, UT 84078 * (435) 789-1017



WEXPRO COMPANY
F WILSON 13 OIL LINE
ON BLM LANDS
IN SECTION 23, T12N, R100W, 6th P.M.
MOFFAT COUNTY, COLORADO

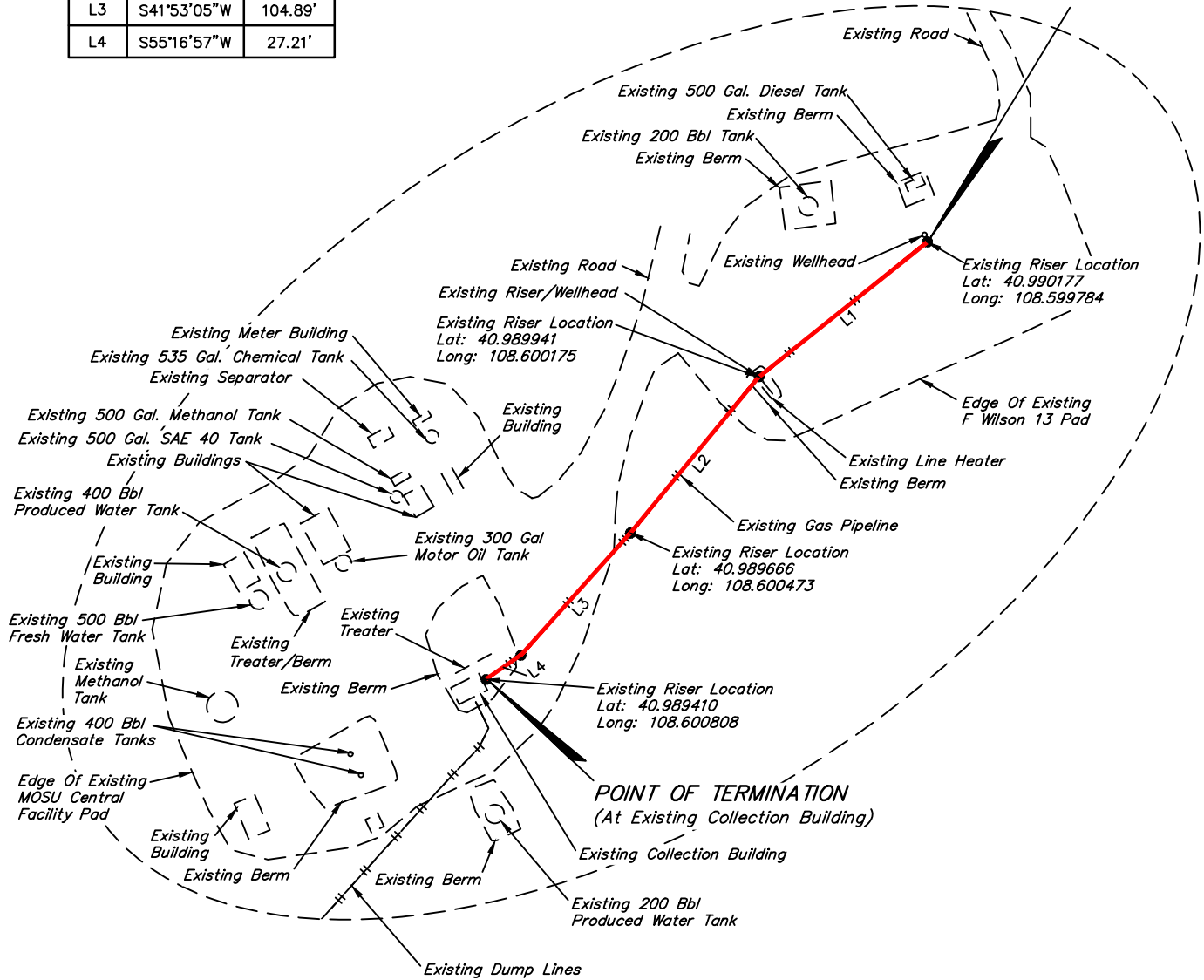
SURVEYED BY	CODY RICH, T.P.	10-21-19	SCALE
DRAWN BY	T.L.L.	10-23-19	1" = 500'

AS-BUILT OIL LINE

LINE TABLE		
LINE	DIRECTION	LENGTH
L1	S51°19'57"W	137.93'
L2	S39°27'26"W	129.67'
L3	S41°53'05"W	104.89'
L4	S55°16'57"W	27.21'

Detail "A"
No Scale

POINT OF BEGINNING
(At Existing Riser)



CERTIFICATE

THIS IS TO CERTIFY THAT THE ABOVE PLAT WAS PREPARED FROM FIELD NOTES OF ACTUAL SURVEYS MADE BY ME OR UNDER MY SUPERVISION AND THAT THE SAME ARE TRUE AND CORRECT TO THE BEST OF MY KNOWLEDGE AND BELIEF.

38391
F. Rich
REGISTERED LAND SURVEYOR
REGISTRATION NO. 30391
STATE OF COLORADO LAND SURVEYOR
2019

FILE: W - 2343-B

Sheet 2 of 2



WEXPRO COMPANY

**F WILSON 13 OIL LINE
ON BLM LANDS
IN SECTION 23, T12N, R100W, 6th P.M.
MOFFAT COUNTY, COLORADO**

SURVEYED BY	CODY RICH, T.P.	10-21-19	SCALE
DRAWN BY	T.L.L.	10-23-19	N/A

AS-BUILT OIL LINE



UELS, LLC
Corporate Office * 85 South 200 East
Vernal, UT 84078 * (435) 789-1017