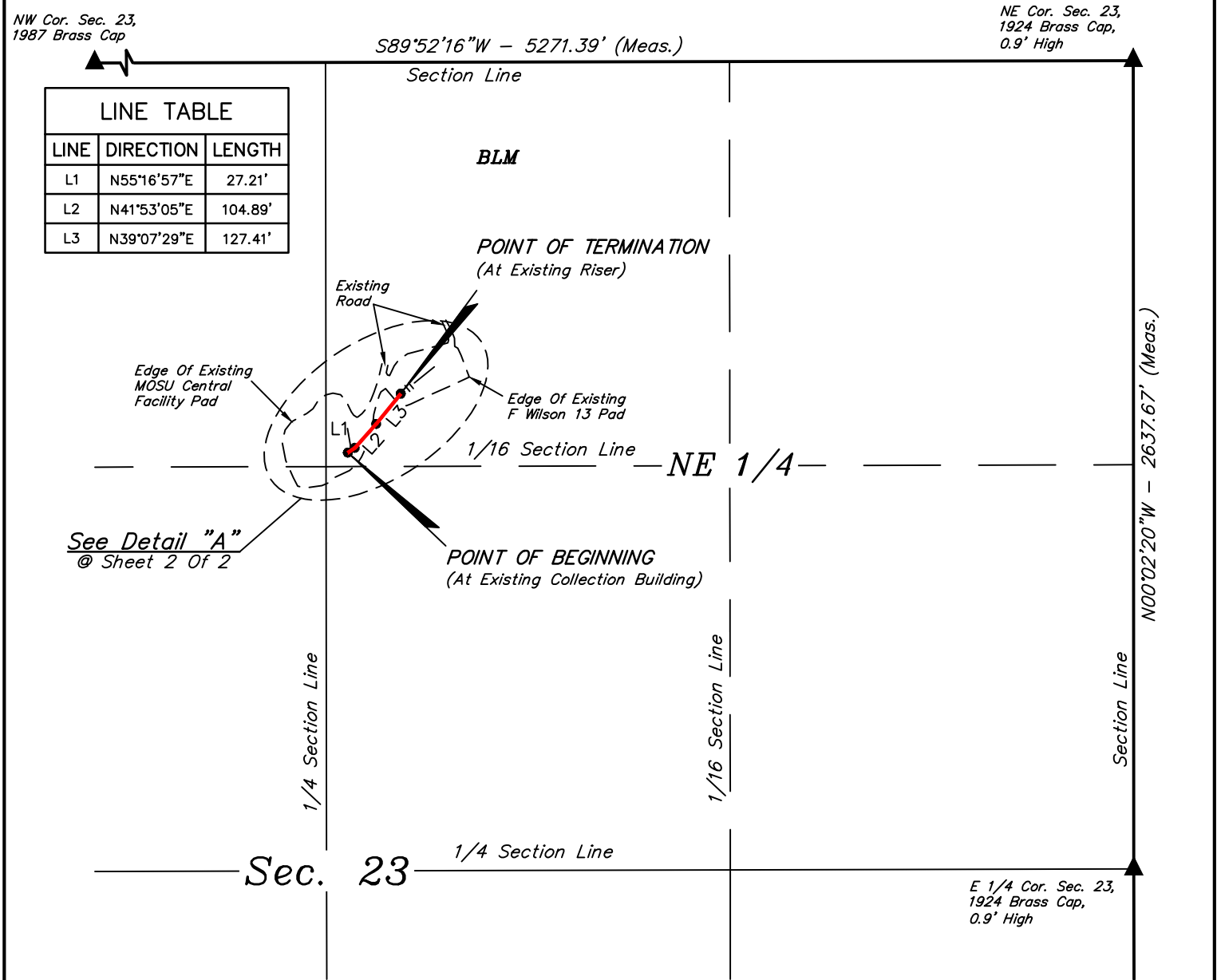


**WEXPRO COMPANY  
MOSU FUEL GAS LINE TO FW 13  
SECTION 23, T12N, R100W, 6th P.M.  
MOFFAT COUNTY, COLORADO**

DATE: \_\_\_\_\_

DESCRIPTION:

[illegible]

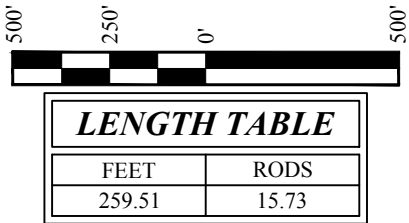


AS-BUILT GAS LINE DESCRIPTION

BEGINNING AT A POINT IN THE NW 1/4 NE 1/4 OF SECTION 23, T12N, R100W, 6th P.M., WHICH BEARS S63°28'23"W 2864.57' FROM THE NORTHEAST CORNER OF SAID SECTION 23, THENCE N55°16'57"E 27.21'; THENCE N41°53'05"E 104.89'; THENCE N39°07'29"E 127.41' TO A POINT IN THE NW 1/4 NE 1/4 OF SAID SECTION 23 AND THE POINT OF TERMINATION, WHICH BEARS S65°32'47"W 2625.75' FROM THE NORTHEAST CORNER OF SAID SECTION 23. BASIS OF BEARINGS IS THE NORTH LINE OF SAID SECTION 23 WHICH IS ASSUMED TO BEAR S89°52'16"W.

POINT OF BEGINNING BEARS S63°28'23"W 2864.57' FROM THE NORTHEAST CORNER OF SECTION 23, T12N, R100W, 6th P.M.

POINT OF TERMINATION BEARS S65°32'47"W 2625.75' FROM THE NORTHEAST CORNER OF SECTION 23, T12N, R100W, 6th P.M.



▲ = SECTION CORNERS LOCATED.

FILE: W - 2343-A

Sheet 1 of 2



UELS, LLC  
Corporate Office \* 85 South 200 East  
Vernal, UT 84078 \* (435) 789-1017



WEXPRO COMPANY

MOSU FUEL GAS LINE TO FW 13  
ON BLM LANDS  
IN SECTION 23, T12N, R100W, 6th P.M.  
MOFFAT COUNTY, COLORADO

SURVEYED BY	CODY RICH, T.P.	10-21-19	SCALE
DRAWN BY	T.L.L.	10-23-19	1" = 500'

AS-BUILT GAS LINE

CERTIFICATE

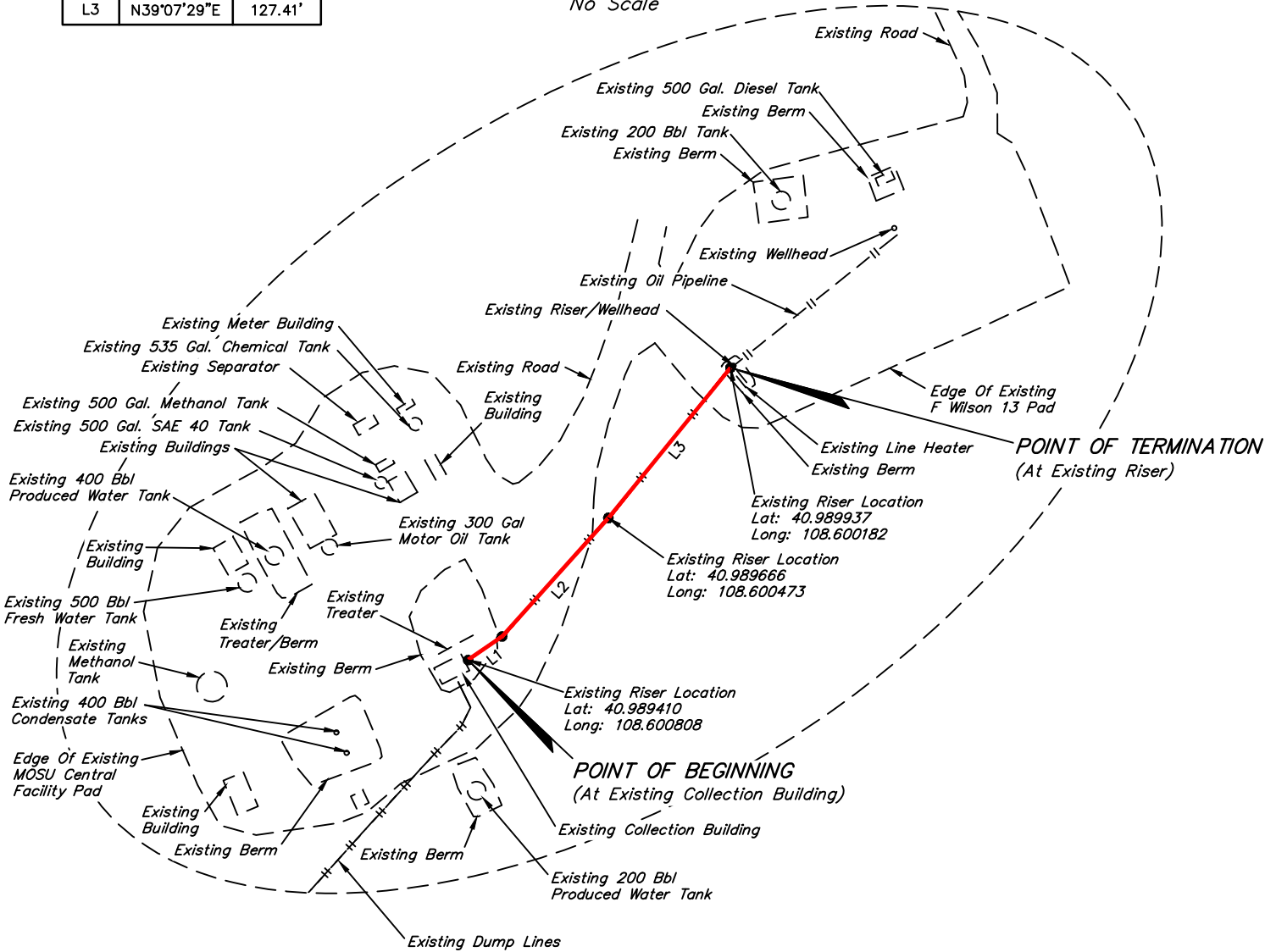
THIS IS TO CERTIFY THAT THE ABOVE PLAT WAS PREPARED FROM FIELD NOTES OF ACTUAL SURVEYS MADE BY ME OR UNDER MY SUPERVISION AND THAT THE SAME ARE TRUE AND CORRECT TO THE BEST OF MY KNOWLEDGE AND BELIEF.

38391

REGISTERED LAND SURVEYOR  
REGISTRATION NO. 30391  
STATE OF COLORADO

LINE TABLE		
LINE	DIRECTION	LENGTH
L1	N55°16'57"E	27.21'
L2	N41°53'05"E	104.89'
L3	N39°07'29"E	127.41'

Detail "A"  
No Scale



CERTIFICATE

THIS IS TO CERTIFY THAT THE ABOVE PLAT WAS PREPARED FROM FIELD NOTES OF ACTUAL SURVEYS MADE BY ME OR UNDER MY SUPERVISION AND THAT THE SAME ARE TRUE AND CORRECT TO THE BEST OF MY KNOWLEDGE AND BELIEF.

REGISTERED LAND SURVEYOR  
REGISTRATION NO. 30391  
STATE OF COLORADO

FILE: W - 2343-B

Sheet 2 of 2



WEXPRO COMPANY

MOSU FUEL GAS LINE TO FW 13  
ON BLM LANDS  
IN SECTION 23, T12N, R100W, 6th P.M.  
MOFFAT COUNTY, COLORADO

SURVEYED BY	CODY RICH, T.P.	10-21-19	SCALE
DRAWN BY	T.L.L.	10-23-19	N/A
AS-BUILT GAS LINE			



UELS, LLC  
Corporate Office \* 85 South 200 East  
Vernal, UT 84078 \* (435) 789-1017