



Terra Energy Partners, LLC

INTERMEDIATE POST JOB REPORT

FEDERAL RG 314-7-297 05-103-12485
S:7 T:2S R:97W Rio Blanco CO

CallSheet #: 88914
Proposal #: 72069



INTERMEDIATE Post Job Report

Attention: Mr. Dustin Childers | (936) 524-8828 | dchilders@terraep.com
Terra Energy Partners, LLC
4828 Loop Central Dr., Suite 900 | Houston, TX 77081

Dear Mr. Dustin Childers,

Thank you for the opportunity to provide cementing services on this well. American Cementing strives to achieve complete customer satisfaction. If you have any questions regarding the services or data provided, please contact American Cementing at any time.

Sincerely,

Lyndon Chandarjit

Field Engineer II | (281) 690-3840 | lyndon.chandarjit@americacementing.com

Field Office 28730 US-6, Rifle, CO 81650
Phone: (970) 657-1187

Job Details & Summary

Geometry

Type	Function	OD (in)	ID (in)	Weight (lb/ft)	Thread	Top (ft)	Bottom (ft)	Excess (%)
Casing	Outer	13.375	12.615	54.5	n/a	0	1402	0
Open Hole	Outer	n/a	12.25	n/a	n/a	1371	2793	50
Open Hole	Outer	n/a	12.25	n/a	n/a	2793	3324	50
Casing	Inner	9.625	8.921	36	n/a	0	3314	0

Equipment / People

Unit Type	Unit	Power Unit	Employee #1
Cement Trailer Float	CTF-340	TRB-421	Devin Burton
Cement Pump Float	CPF-052	TRH-957	James Lujan
Light Duty Vehicles	LDV-063		Francisco Castillo
Light Duty Vehicles	LDV-082		Jacob Kirchenwitz

Timing

Event	Date/Time
ERTS	11/01/2023 00:00
Call Out	11/1/2023 21:00
Depart Facility	11/1/2023 21:30
On Location	11/1/2023 22:55
Rig Up Iron	11/1/2023 23:00
Job Started	11/2/2023 12:36
Job Completed	11/2/2023 13:37
Rig Down Iron	11/2/2023 13:45
Depart Location	11/2/2023 15:30

General Job Information

Metrics	Value
Well Fluid Density	9.4 lb/gal
Well Fluid Type	WBM
Rig Circulation Vol	300 bbls
Rig Circulation Time	0.5 hours
Calculated Displacement	253 bbls
Actual Displacement	253 bbls
Total Spacer to Surface	0 bbls
Total CMT to Surface	0 bbls
Well Topped Out	N/A

Job Details

Metrics	Value
Well Full Prior to Job	Yes
Well Fluid Density Into Well	9.4 lb/gal
Well Fluid Density Out of Well	9.4 lb/gal

Job Details (cont.)

Metrics	Value
BHCT	88 °F
BHST	120 °F

Water Analysis

Metrics	Value	Recommended
Water Source	None	
Temperature	67 °F	50-80 °F
pH Level	7	5.5-8.5
Chlorides	0 mg/L	0-3000 mg/L
Total Alkalinity	240	0-1000
Total Hardness	250 mg/L	0-500 mg/L
Carbonates	0 mg/L	0-100 mg/L
Sulfates	200 mg/L	0-1500 mg/L
Potassium	250 mg/L	0-3000 mg/L
Iron	0 mg/L	0-300 mg/L

Circulation

Lost Circulation Experienced	Losses into Spacer	Losses into Cement	Losses into Displacement
No			

Job Execution Information

Fluid	Product	Function	Density (lb/gal)	Yield (ft ³ /sk)	Water Rq. (gal/sk)	Water Rq. (gal/bbl)	Volume (sks)	Volume (bbl)	Designed Top (ft)
1	Water	Flush	8.34			42.00		20.00	2050
2	Lead	Lead	12.30	2.31	13.16		103.00	42.36	2289
3	Tail	Tail	12.80	2.03	11.16		125.00	45.28	2793
4	Water	DisplacementFinal	8.34			42.00		253.00	0

Job Fluid Details

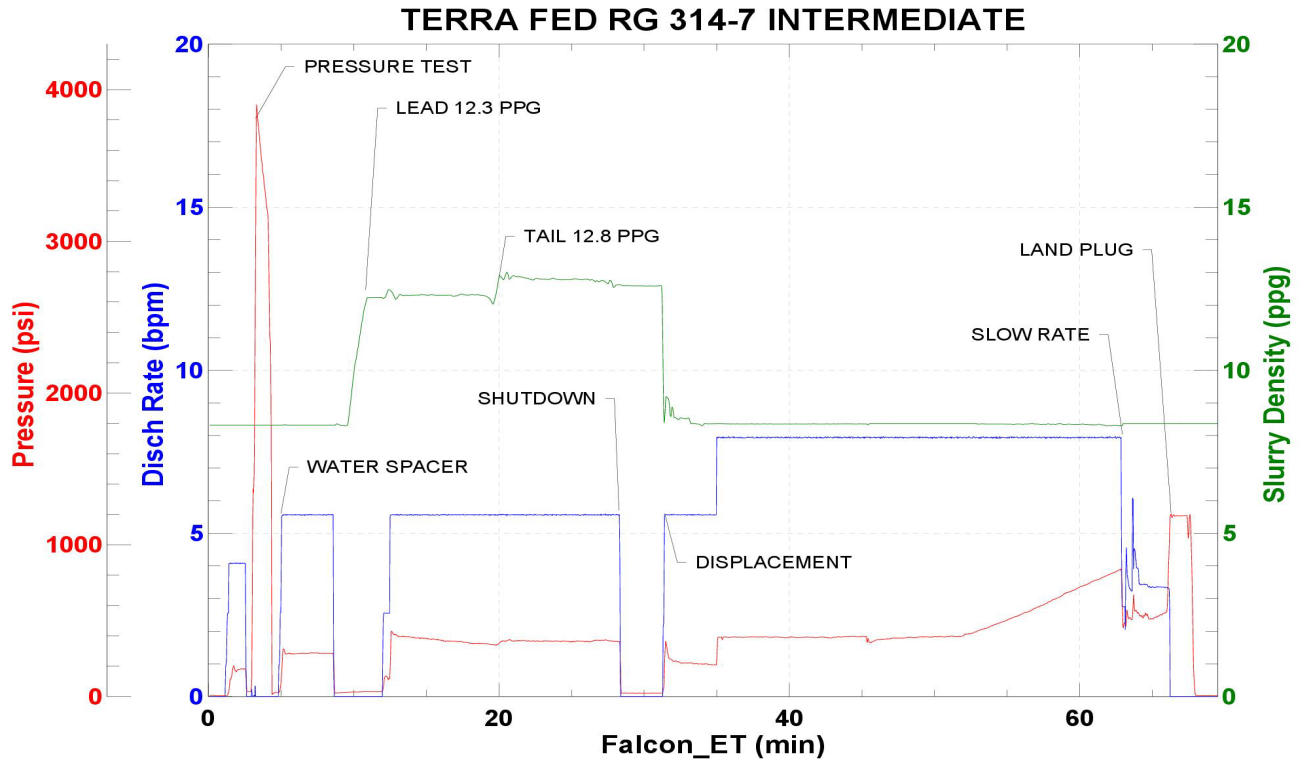
Fluid	Type	Fluid	Product	Function	Conc.	Uom
2	Lead	Lead	ASTM TYPE IL	Cement	100.00	%
2	Lead	Lead	A-10	Accelerator	5.00	%BWOB
2	Lead	Lead	A-2	Accelerator	3.00	lb/sk
2	Lead	Lead	A-7P	Accelerator	2.00	lb/sk
2	Lead	Lead	IntegraSeal POLI	LostCirculation	0.25	lb/sk
2	Lead	Lead	STATIC FREE	Other	0.01	lb/sk
2	Lead	Lead	XCem-308	Defoamer	0.30	%BWOB
3	Tail	Tail	ASTM TYPE IL	Cement	100.00	%
3	Tail	Tail	A-10	Accelerator	5.00	%BWOB
3	Tail	Tail	A-2	Accelerator	2.00	lb/sk
3	Tail	Tail	A-7P	Accelerator	2.00	lb/sk
3	Tail	Tail	IntegraSeal POLI	LostCirculation	0.25	lb/sk
3	Tail	Tail	STATIC FREE	Other	0.01	lb/sk
3	Tail	Tail	XCem-308	Defoamer	0.30	%BWOB

Job Logs

Line	Event	Date (MM/DD/YY)	Time (HH:MM)	Density (lb/gal)	Pump Rate (bpm)	Pump Volume (bbls)	Pipe Pressure (psi)	Comment
1	CALLOUT	11/2/2023	21:00					ON LOCATION AT
2	LEAVE LOCATION	11/2/2023	21:30					LEAVE PREVIOUS LOCATION
3	ON LOCATION	11/2/2023	22:55					CREW ON LOCATION
4	RIG UP	11/2/2023	23:00					RIG UP MEETING, RIG UP
5	SAFETY MEETING	11/2/2023	12:00					PRE-JOB SAFETY MEETING
6	PRESSURE TEST	11/2/2023	12:33				3807	PRESSURE TEST LINES
7	WATER SPACER	11/2/2023	12:36	8.34	5.5	20	285	WATER SPACER
8	LEAD CEMENT	11/2/2023	12:42	12.3	5.5	42	351	LEAD 102 SKS/42 BBLS AT 12.3 PPG, TOP OF LEAD 1,808'
9	TAIL CEMENT	11/2/2023	12:50	12.8	5.5	45	363	TAIL 125 SKS/45 BBLS AT 12.8 PPG, TOP OF TAIL 2,561'
10	SHUTDOWN	11/2/2023	12:59					SHUTDOWN, DROP PLUG
11	DISPLACEMENT	11/2/2023	13:02	8.34	8	50	391	DISPLACEMENT WATER
12	DISPLACEMENT	11/2/2023	13:09	8.34	8	50	395	100 BBLS DISPLACEMENT PUMPED
13	DISPLACEMENT	11/2/2023	13:15	8.34	8	50	397	150 BBLS DISPLACEMENT PUMPED
14	DISPLACEMENT	11/2/2023	13:22	8.34	8	50	625	200 BBLS DISPLACEMENT PUMPED
15	DISPLACEMENT	11/2/2023	13:28	8.34	8	43	835	243 BBLS DISPLACEMENT PUMPED
16	SLOW RATE	11/2/2023	13:35	8.34	3	10	557	SLOW RATE
17	LAND PLUG	11/2/2023	13:37				1191	LAND PLUG, FULL RETURNS
18	CHECK FLOATS	11/2/2023	13:39					FLOATS HELD, 1.25 BBLS FLOW BACK
19	RIG DOWN	11/2/2023	13:45					RIG DOWN MEETING, RIG DOWN, BLOW DOWN PUMPING IRON AND WASHUP WITH AIR
20	LEAVE LOCATION	11/2/2023	15:30					CREW LEAVE LOCATION

Pump Diagrams

JobMaster Program Version 5.01C1
Job Number: 88914
Customer: TERRA
Well Name: FED RG 314-7



Job Start: Thursday, November 02, 2023