

# NORTH PLATTE K-O-13HNC (05-123-37062): Wellhead Cut/Cap and Equipment Removal

40.405000, -104.389880

NWNW Sec. 13 T5N, R63W, 6th PM

Weld County, Colorado

Bonanza Creek Energy (8960)



| Equipment to be Removed |  |                       |
|-------------------------|--|-----------------------|
| Legend                  | Equipment On-Site  | # Pieces of Equipment |
| 1                       | NORTH PLATTE K-O-13HNC<br>(05-123-37062)<br>40.405000, -104.389880 | 1                     |
| 2                       | Separator  | 1                     |

**Legend**

Site Investigation Points

- ✘ Visual Inspection and Soil Sample
- On-Location Flowline Corridor

# NORTH PLATTE K-O-13HNC (05-123-37062): ¼ Mile Buffer - Wildlife and Hydrology Map

40.405000, -104.389880

NWNW Sec. 13 T5N, R63W, 6th PM

Weld County, Colorado

Bonanza Creek Energy (8960)

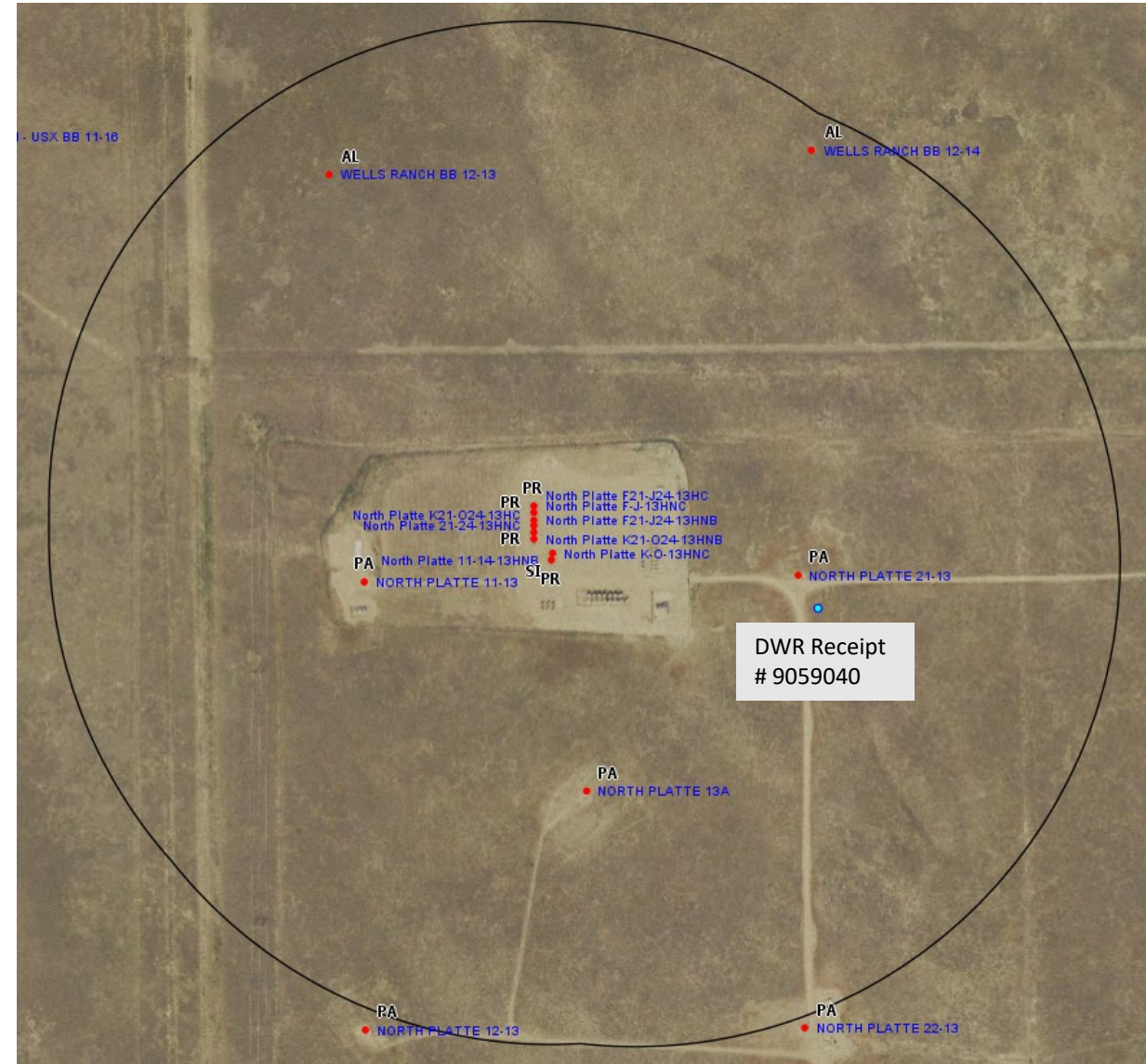
**Legend**

● Well (API Spot)

● Water Well

| Receptor         | DWR Receipt (Permit) | Distance (ft) | Direction | Well Depth(ft) | Static Water Level (ft) |
|------------------|----------------------|---------------|-----------|----------------|-------------------------|
| Residential Well | 9059040 (3483-)      | 380           | E         | 41             | 18                      |

**NO HPH WITHIN ¼ MILE**



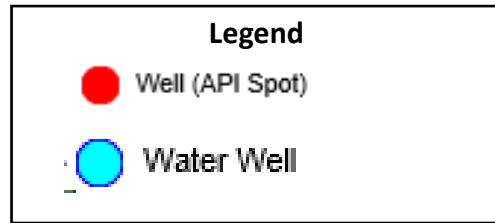
# NORTH PLATTE K-O-13HNC (05-123-37062): ¼ Mile Buffer - Topography

40.405000, -104.389880

NWNW Sec. 13 T5N, R63W, 6th PM

Weld County, Colorado

Bonanza Creek Energy (8960)



| Receptor               | DWR Receipt (Permit) | Distance (ft) | Direction | Elevation | Static Water Level (ft) |
|------------------------|----------------------|---------------|-----------|-----------|-------------------------|
| NORTH PLATTE K-O-13HNC | N/A                  | 0             | N/A       | 4630      | N/A                     |
| Residential Well       | 9059040 (3483-)      | 380           | E         | 4640      | 18                      |

