



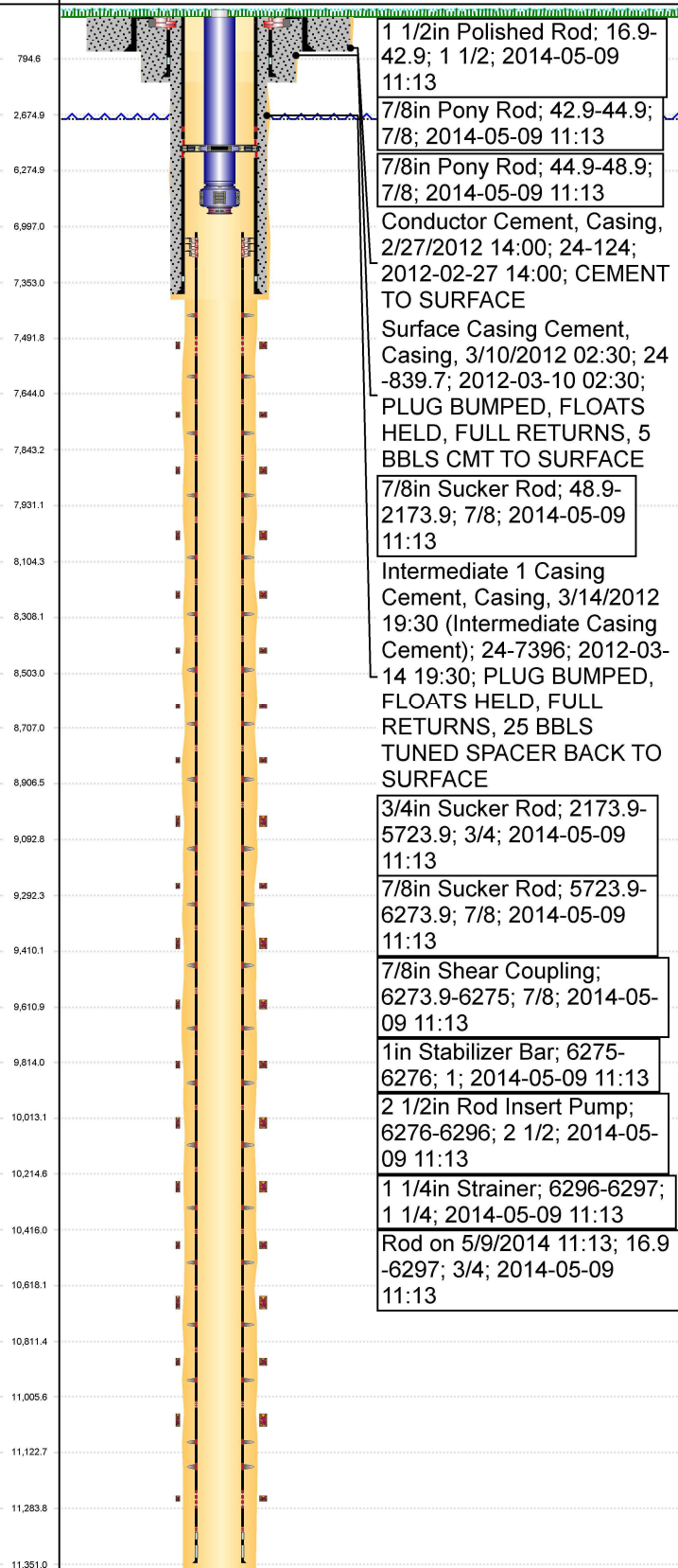
P&A Wellbore For State

Well Name: DYER USX AB35-68-1HN

Original Hole [Land]

MD
(ftK
B)

Vertical schematic (actual)



1 1/2in Polished Rod; 16.9-42.9; 1 1/2; 2014-05-09 11:13

7/8in Pony Rod; 42.9-44.9; 7/8; 2014-05-09 11:13

7/8in Pony Rod; 44.9-48.9; 7/8; 2014-05-09 11:13

Conductor Cement, Casing, 2/27/2012 14:00; 24-124; 2012-02-27 14:00; CEMENT TO SURFACE

Surface Casing Cement, Casing, 3/10/2012 02:30; 24-839.7; 2012-03-10 02:30; PLUG BUMPED, FLOATS HELD, FULL RETURNS, 5 BBLs CMT TO SURFACE

7/8in Sucker Rod; 48.9-2173.9; 7/8; 2014-05-09 11:13

Intermediate 1 Casing Cement, Casing, 3/14/2012 19:30 (Intermediate Casing Cement); 24-7396; 2012-03-14 19:30; PLUG BUMPED, FLOATS HELD, FULL RETURNS, 25 BBLs TUNED SPACER BACK TO SURFACE

3/4in Sucker Rod; 2173.9-5723.9; 3/4; 2014-05-09 11:13

7/8in Sucker Rod; 5723.9-6273.9; 7/8; 2014-05-09 11:13

7/8in Shear Coupling; 6273.9-6275; 7/8; 2014-05-09 11:13

1in Stabilizer Bar; 6275-6276; 1; 2014-05-09 11:13

2 1/2in Rod Insert Pump; 6276-6296; 2 1/2; 2014-05-09 11:13

1 1/4in Strainer; 6296-6297; 1 1/4; 2014-05-09 11:13

Rod on 5/9/2014 11:13; 16.9-6297; 3/4; 2014-05-09 11:13

Well Header

Surface UWI 0512334773	Business Unit Rockies	Gov Auth Dist	Prod Tree Loc Land
Orig. KB to Gnd (ft) 24.00	Original Spud Date 3/9/2012	Abandon Date	Well Sub-Status PR
Comment			

Surface Location (Congressional)

Qtr 3 NE	Qtr 4 NE	Section 34	Twrsip 7	Twrsip... N	Range 64	Rng E... W	Latitude (°) 40.53605853	Longitude (°) -104.527822183
-------------	-------------	---------------	-------------	----------------	-------------	---------------	-----------------------------	---------------------------------

Wellbore Sections

Section Des	Hole Size (in)	Top Depth (ftKB)	Btm Depth (ftKB)
CONDUCTOR	24	24.0	124.0
SURFACE	13 3/4	124.0	849.0
INTERMEDIATE	8 3/4	849.0	7,406.0
PRODUCTION	6 1/8	7,406.0	11,361.0

Casing Strings

Csg Des	Run Date	OD (in)	Wt/Len (lb/ft)	Grade	Top Depth (MD) (ftKB)	Set Depth (MD) (ftKB)
Conductor	2/27/2012	16	75.00	J-55	24	124
Surface	3/10/2012	9 5/8	36.00	J-55	24	839.7
Intermediate Casing 1	3/13/2012	7	26.00	P-110	24	7396.1
Production Casing	3/17/2012	4 1/2	11.60	P-110	7274.3	11351

Cement

Des	Start Date	Top (ftKB)	Btm (ftKB)
Conductor Cement	2/27/2012	24.0	124.0
Surface Casing Cement	3/10/2012	24.0	839.7
Intermediate Casing Cement	3/14/2012	24.0	7,396.0

Zone Statuses

Zone Name	Status Date	Status	Fluid Type	Job	Prod Method
NIOBRARA	5/17/2012	PR		DRILLING/COMPLETION - ORIGINAL, 3/5/2012...	
NIOBRARA	5/20/2012	PR	Water		Flowing

Stim/Frac Stage

Zone	Start Date	Top (ftKB)	Btm (ftKB)
	5/2/2012	7,492.0	7,493.0
	5/2/2012	7,652.0	7,653.0
	5/2/2012	7,856.0	7,857.0
	5/2/2012	8,031.0	8,032.0
	5/2/2012	8,207.0	8,208.0
	5/2/2012	8,411.0	8,412.0
	5/2/2012	8,606.0	8,607.0
	5/2/2012	8,810.0	8,811.0
	5/2/2012	9,010.0	9,011.0
	5/2/2012	9,209.0	9,210.0
	5/2/2012	9,409.0	9,410.0
	5/2/2012	9,610.0	9,611.0
	5/2/2012	9,814.0	9,815.0
	5/2/2012	10,013.0	10,014.0
	5/2/2012	10,217.0	10,218.0
	5/2/2012	10,421.0	10,422.0
	5/2/2012	10,623.0	10,624.0
	5/2/2012	10,824.0	10,825.0
	5/2/2012	11,019.0	11,020.0
NIOBRARA, Original Hole	5/2/2012	11,280.0	11,281.0

Other In Hole

Run Date	Des	Make	OD (in)	Top (ftKB)	Btm (ftKB)

Logs

Date	Type	Depth Top (MD) (ftKB)	Btm (ftKB)
3/15/2012	MWD GAMMA - MD	849	11,361.0
3/15/2012	MWD GAMMA - TVD	849	11,361.0
3/17/2012	MUD LOG - HORIZONTAL	1,000	11,361.0
3/17/2012	MUD LOG VERTICAL	1,000	11,361.0
4/25/2012	CBL/CCL/GR	24	7,160.0



P&A Wellbore For State

Well Name: DYER USX AB35-68-1HN

Original Hole [Land]

Wellbore Plug Back Total Depths			
Date	Type	Com	PBTD (ftKB)
3/17/2012	FLOAT COLLAR	FLOAT COLLAR	11,349

MD (ftKB)
B)

Vertical schematic (actual)

