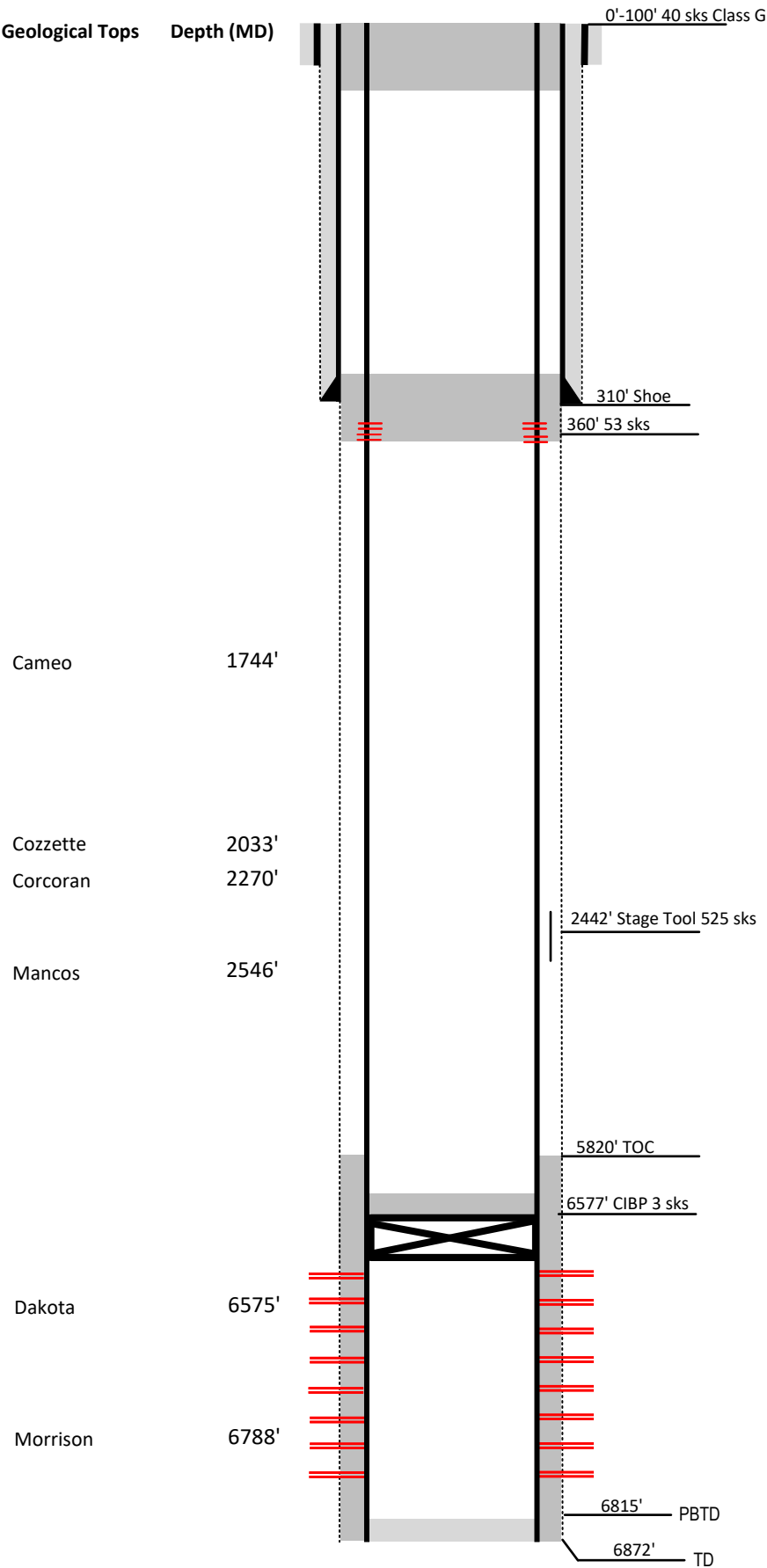


Laramie Energy

Proposed Wellbore Diagram
Not to scale

FEDERAL WELL: YES ☒ NO ☐



Well Name	Winter Flats # 01-02-100
API	05-077-08517-00
Surface Location	SWSW Sec 2 T9S R100W
GPS Coordinates	39.297319, -108.526937
County, State	Mesa County, Co
Diagram Date	4/9/2024

Hole	30" @ 40'
Conductor	20" @ 40'
Cement	Surface

Surface Hole	13.75" @ 310'
Casing	9 5/8" 36# J-55 @ 310'
Cement	350 sks
TOC	Surface

Production Hole	8.75" @ 6870'
Casing	4 1/2" 11.6# I-80 @ 6870'
Cement	275 sks
TOC	5820'

Tubing	2 3/8" J-55 EUE @ 6667'
--------	-------------------------

Perforations	Top	Bottom
	6627'	6786'