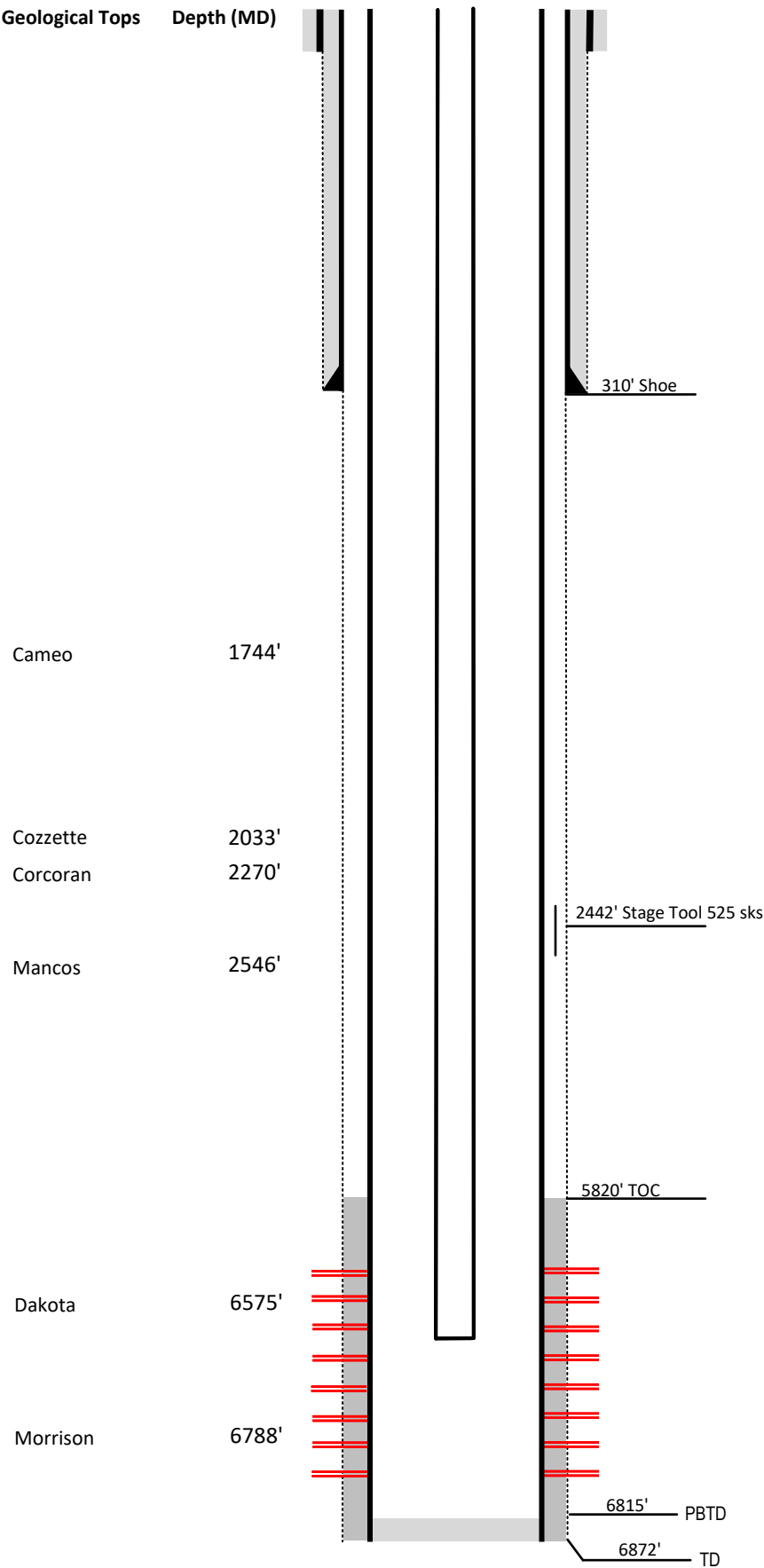


# Laramie Energy

Current Wellbore Diagram  
Not to scale

FEDERAL WELL: YES ☒ NO ☐



<b>Well Name</b>	Winter Flats # 01-02-100
<b>API</b>	05-077-08517-00
<b>Surface Location</b>	SWSW Sec 2 T9S R100W
<b>GPS Coordinates</b>	39.297319, -108.526937
<b>County, State</b>	Mesa County, Co
<b>Diagram Date</b>	4/9/2024

<b>Hole</b>	30" @ 40'
<b>Conductor</b>	20" @ 40'
<b>Cement</b>	Surface

<b>Surface Hole</b>	13.75" @ 310'
<b>Casing</b>	9 5/8" 36# J-55 @ 310'
<b>Cement</b>	350 sks
<b>TOC</b>	Surface

<b>Production Hole</b>	8.75" @ 6870'
<b>Casing</b>	4 1/2" 11.6# I-80 @ 6870'
<b>Cement</b>	275 sks
<b>TOC</b>	5820'

<b>Tubing</b>	2 3/8" J-55 EUE @ 6667'
---------------	-------------------------

<b>Perforations</b>	<b>Top</b>	<b>Bottom</b>
	6627'	6786'