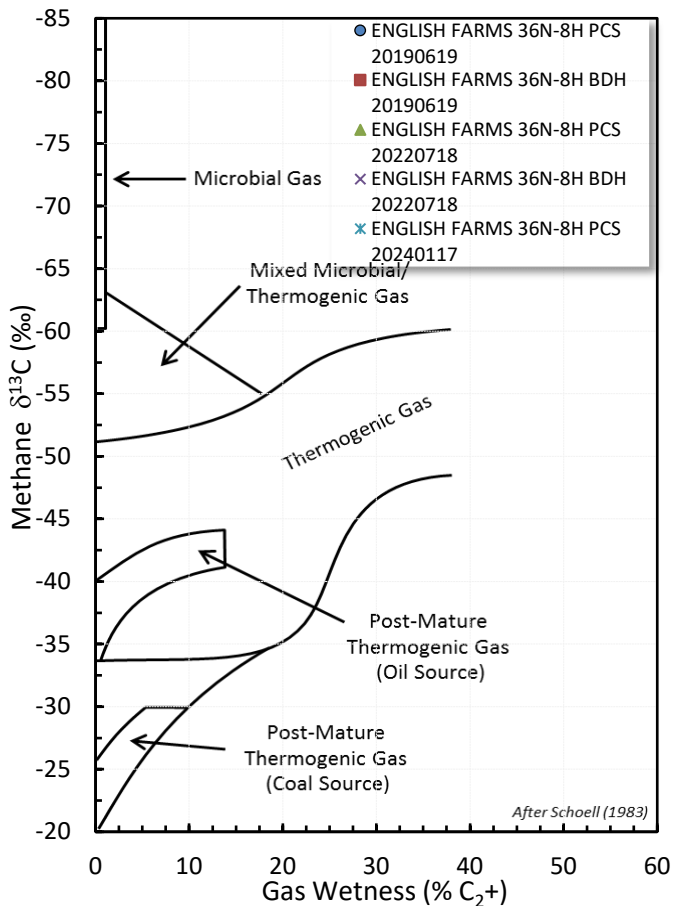
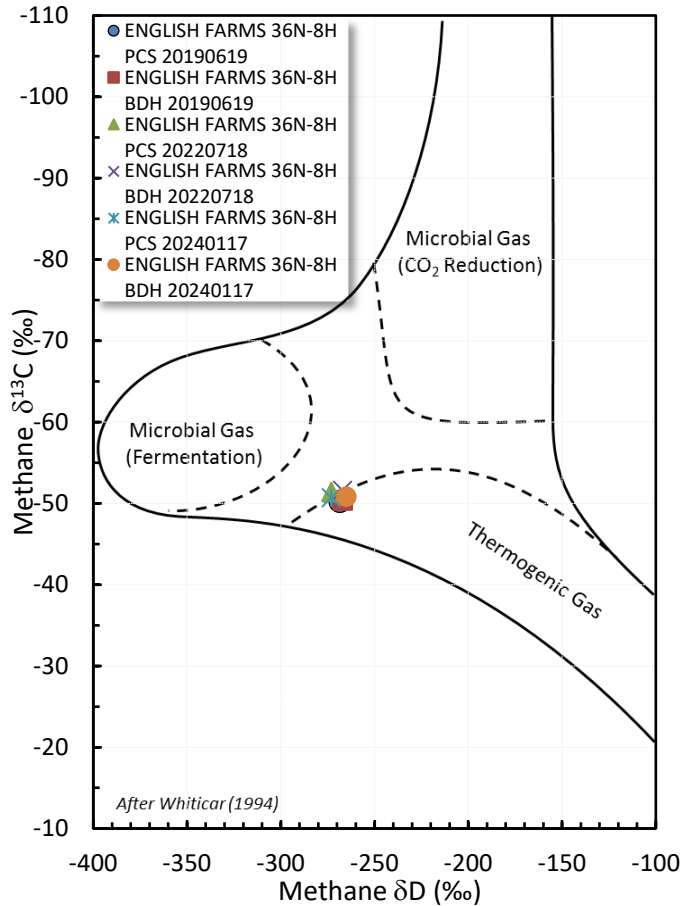


# Stable Isotope Interpretive Plots

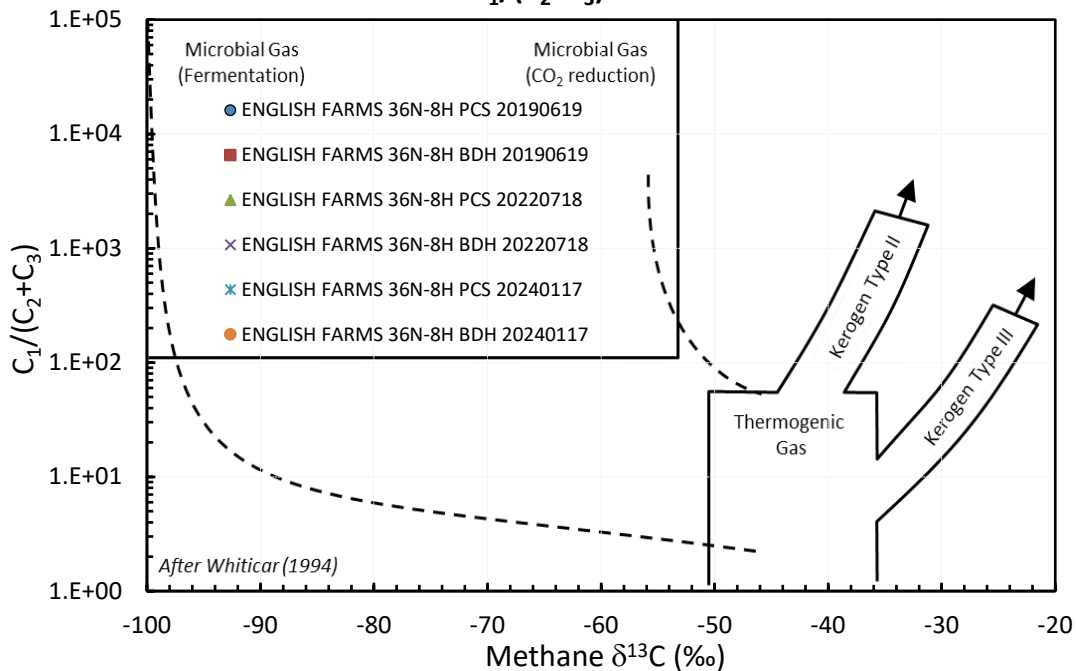
## Methane vs Gas Wetness Genetic Classification



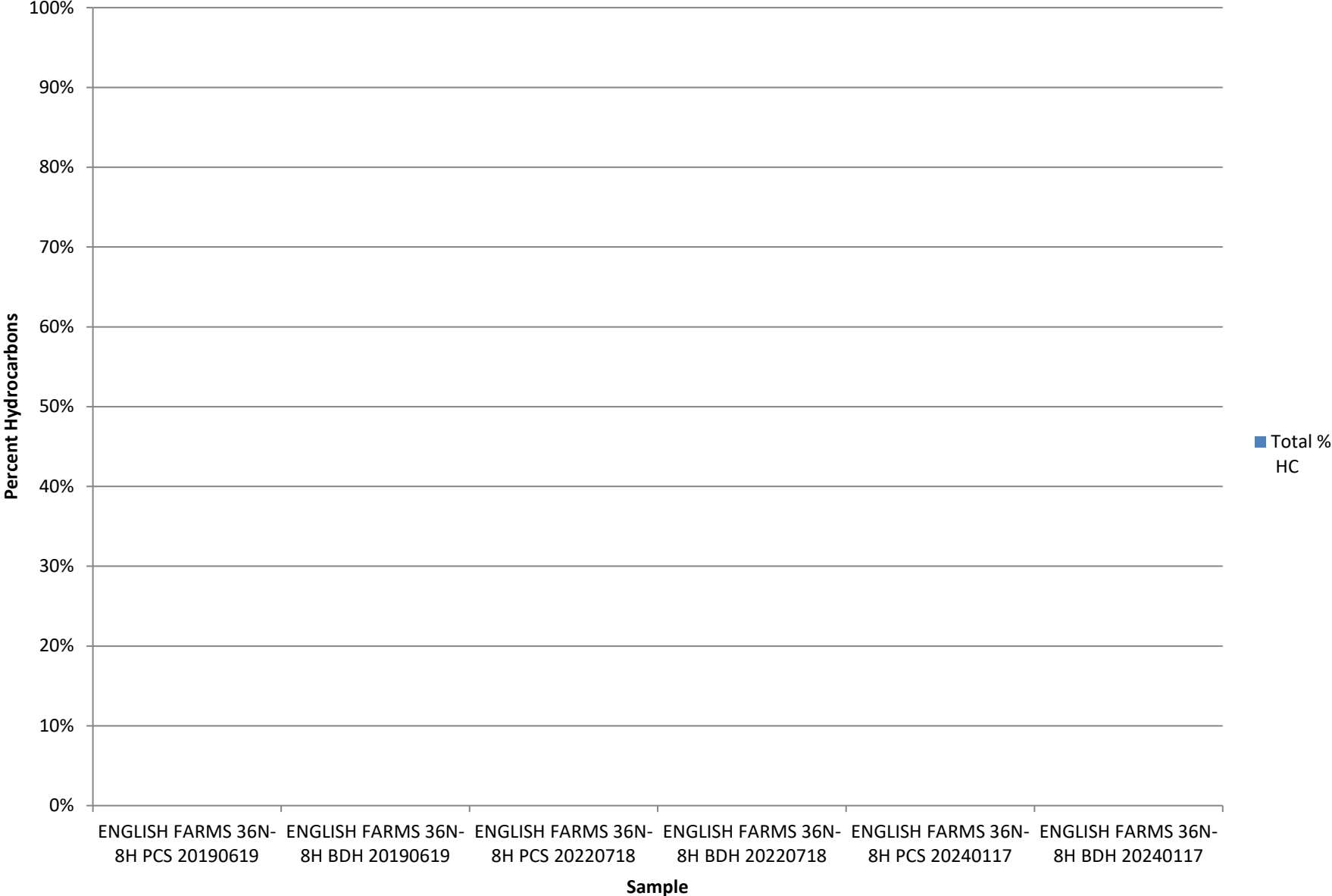
## Methane $\delta^{13}\text{C}$ vs $\delta\text{D}$ Genetic Classification Plot



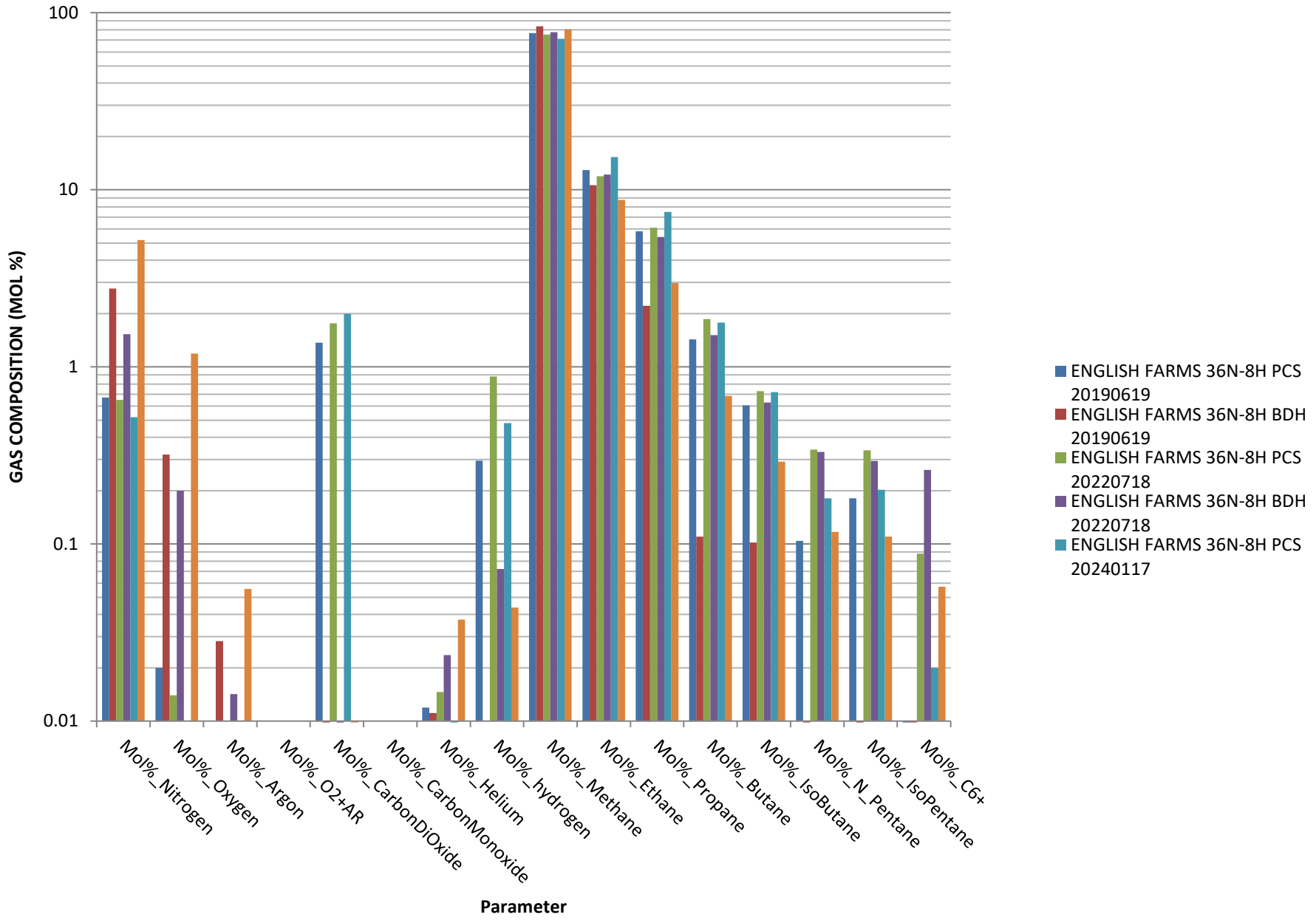
## Methane $\delta^{13}\text{C}$ vs $\text{C}_1/(\text{C}_2+\text{C}_3)$ Genetic Classification Plot



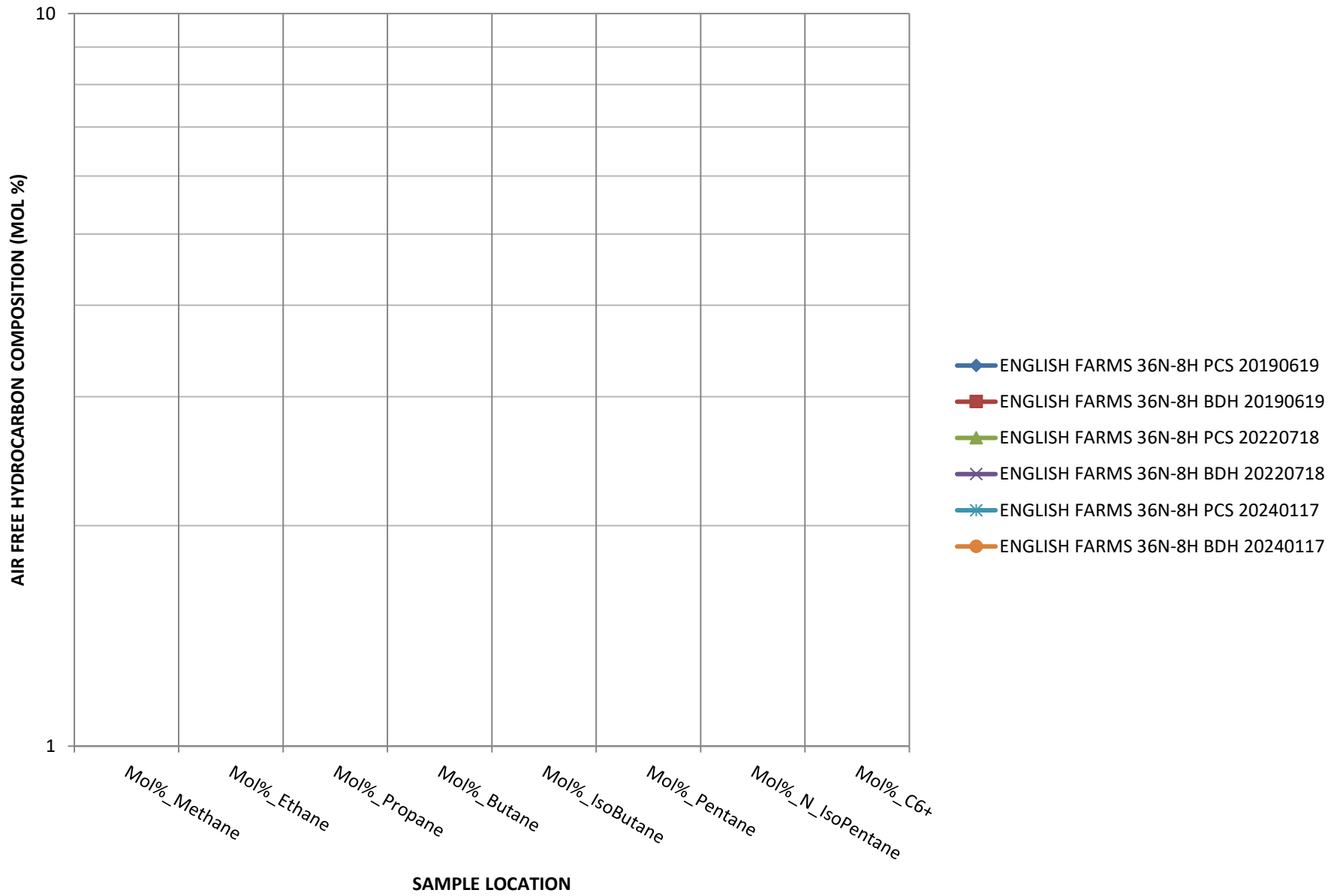
# Total Percent Hydrocarbons

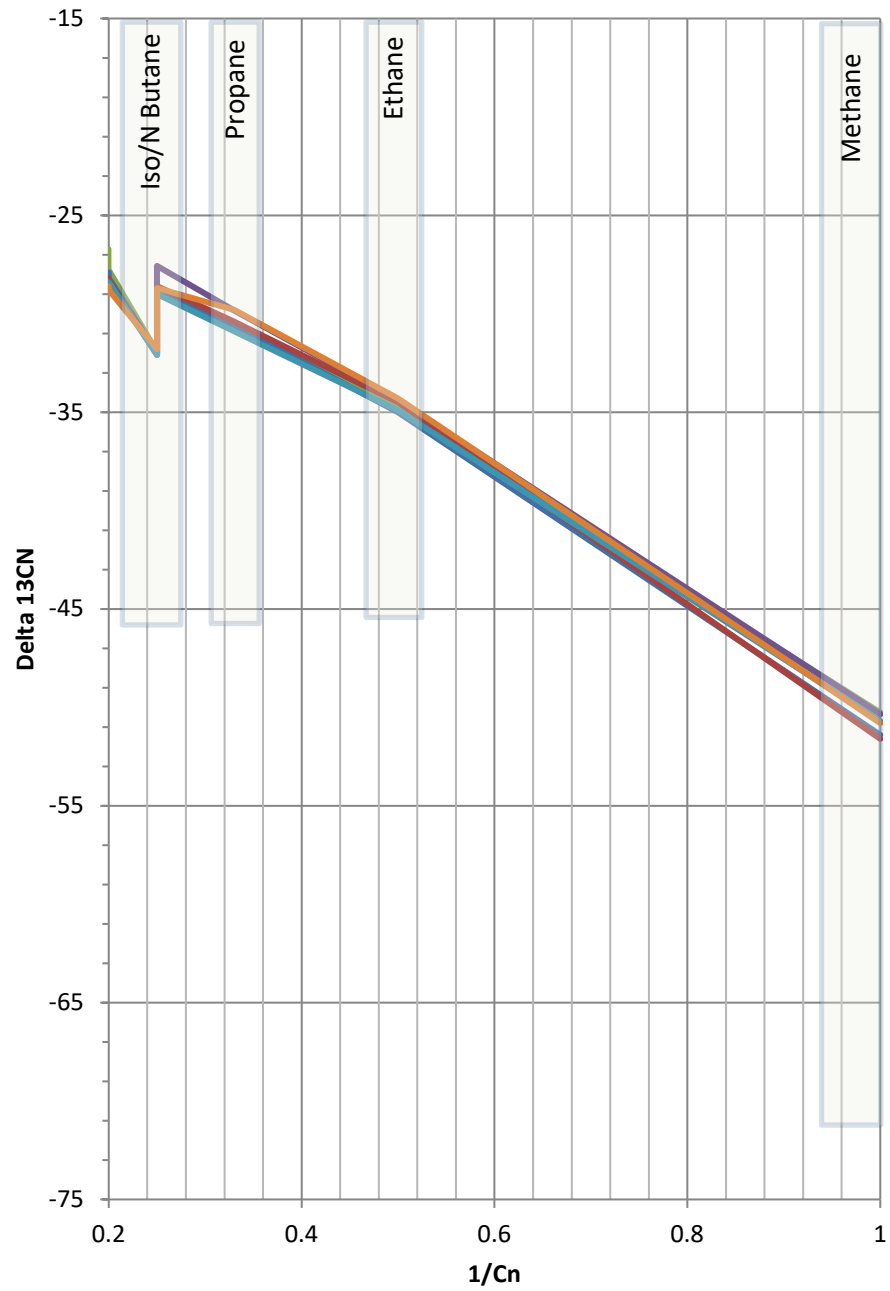


# GAS COMPOSITION



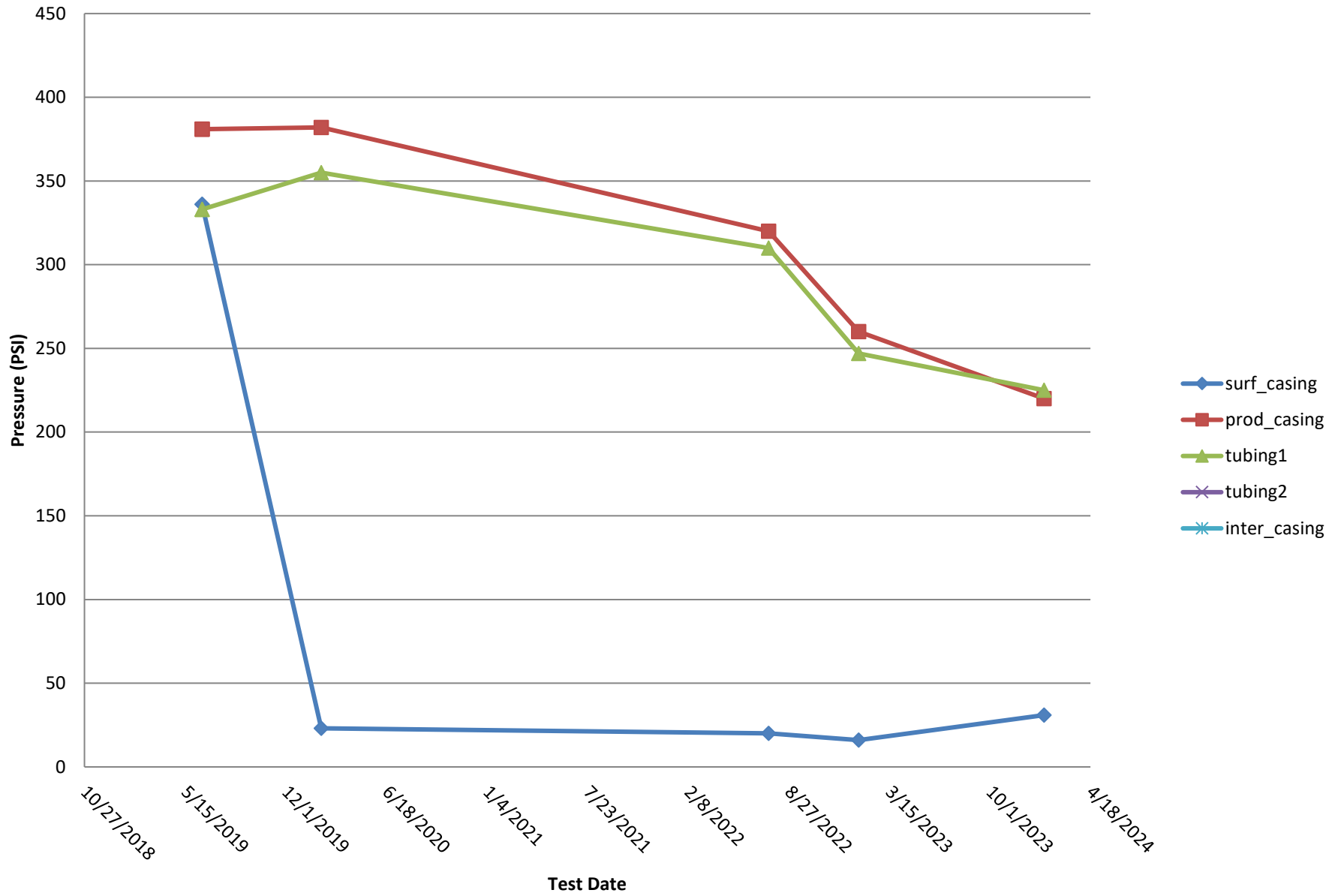
# HYDROCARBON COMPOSITION



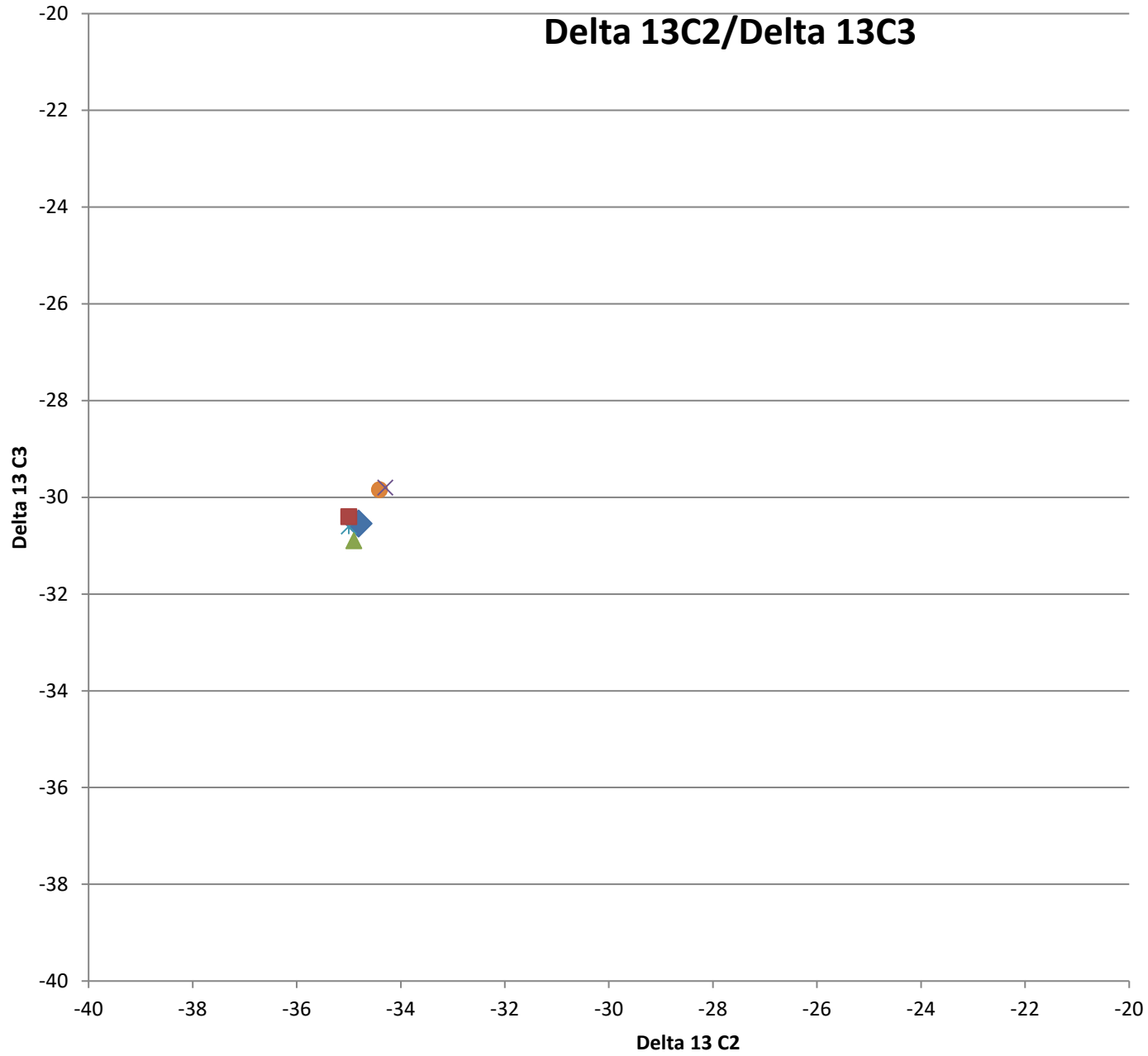


- ENGLISH FARMS 36N-8H PCS
- ENGLISH FARMS 36N-8H BDH
- ENGLISH FARMS 36N-8H PCS
- ENGLISH FARMS 36N-8H BDH
- ENGLISH FARMS 36N-8H PCS
- ENGLISH FARMS 36N-8H BDH

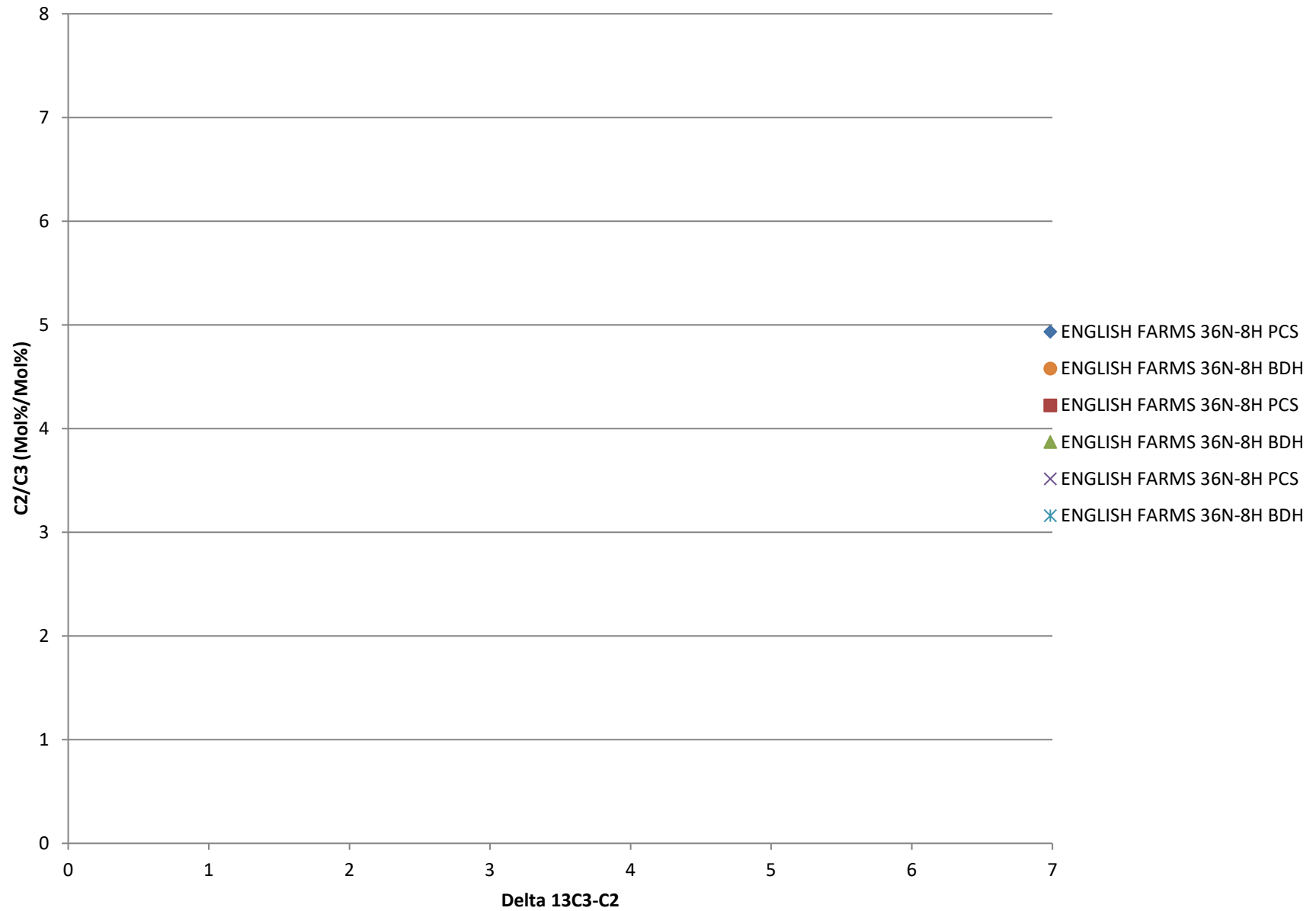
# Bradenhead Test Summary



# Delta 13C2/Delta 13C3



# Delta13 C2/C3 vs. Delta 13C3-C2



# Delta 13 IC4/ Delta NC4

