

Well Name & API: Gemini G Federal 06-33, 05-123-30688

Flowline Abandonment Type:

Full Removal

Flowlines

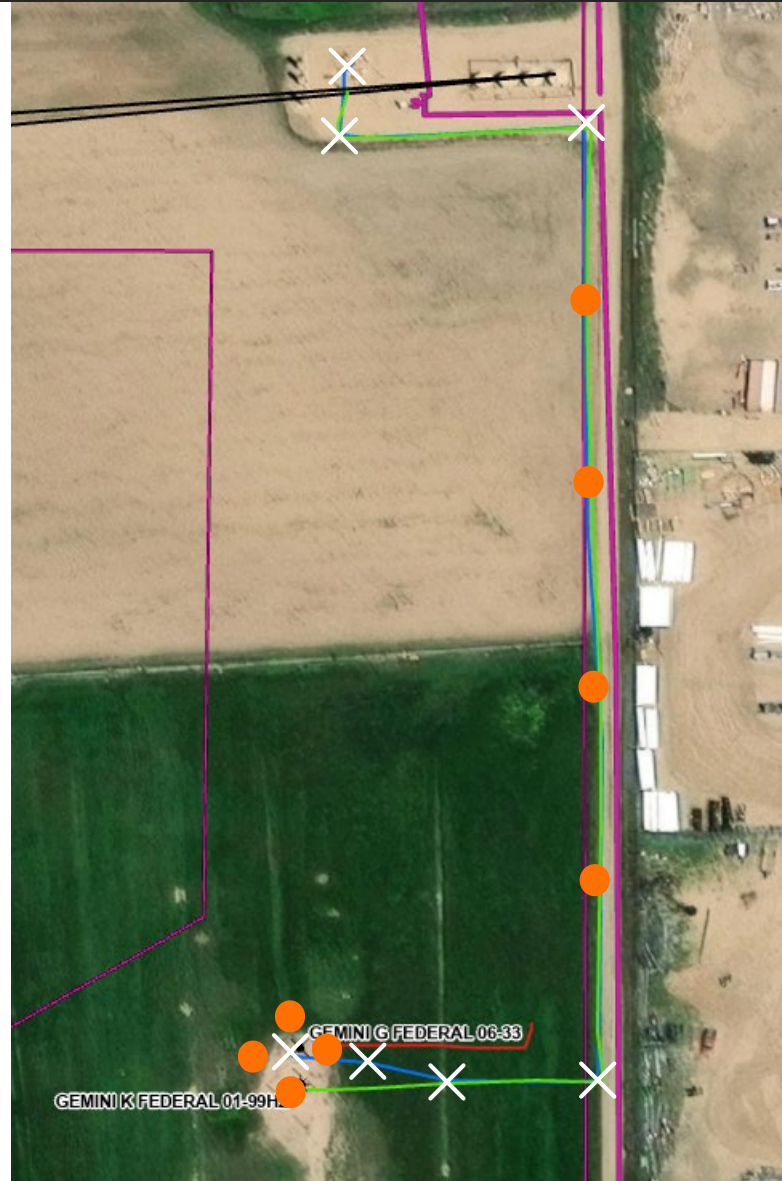
- Abandoned
- Active
- Out of Service
- Pre-commissioned
- Removed
- Turned into Air Line
- Area of Conflict
(Proposed Abandon-in-Place Area)
- Proposed Soil Sample Location
- Field Screening Location

Wells

- Active
- Abandoned Location
- Dry & Abandoned
- Plugged & Abandoned
- Producing
- Shut-In
- Temporarily Abandoned

Third-Party Pipelines

-
-
-
-
-
- NWI Wetlands



Well Latitude/Longitude: 40.337380/-104.716300
Flowline Length (ft): 1169

Flowline Point A Latitude/Longitude: 40.33736607/-104.71631456
Flowline Point B Latitude/Longitude: 40.33956852/-104.71618538

Created By: Clara Jenck
Date: 04/02/2024

