

# T3S, R96W, 6th P.M.

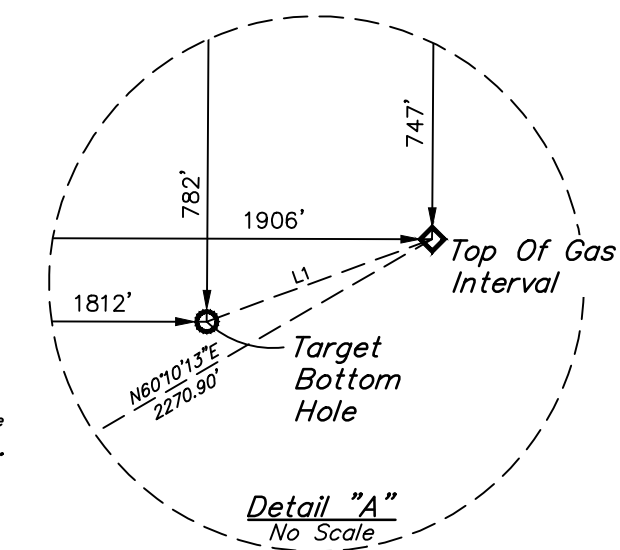
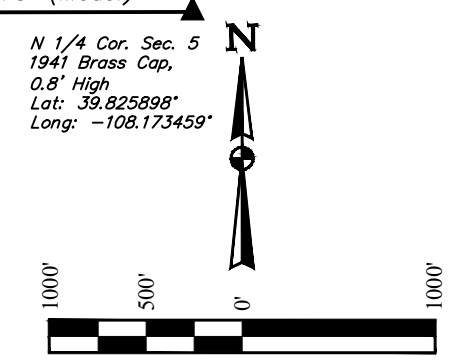
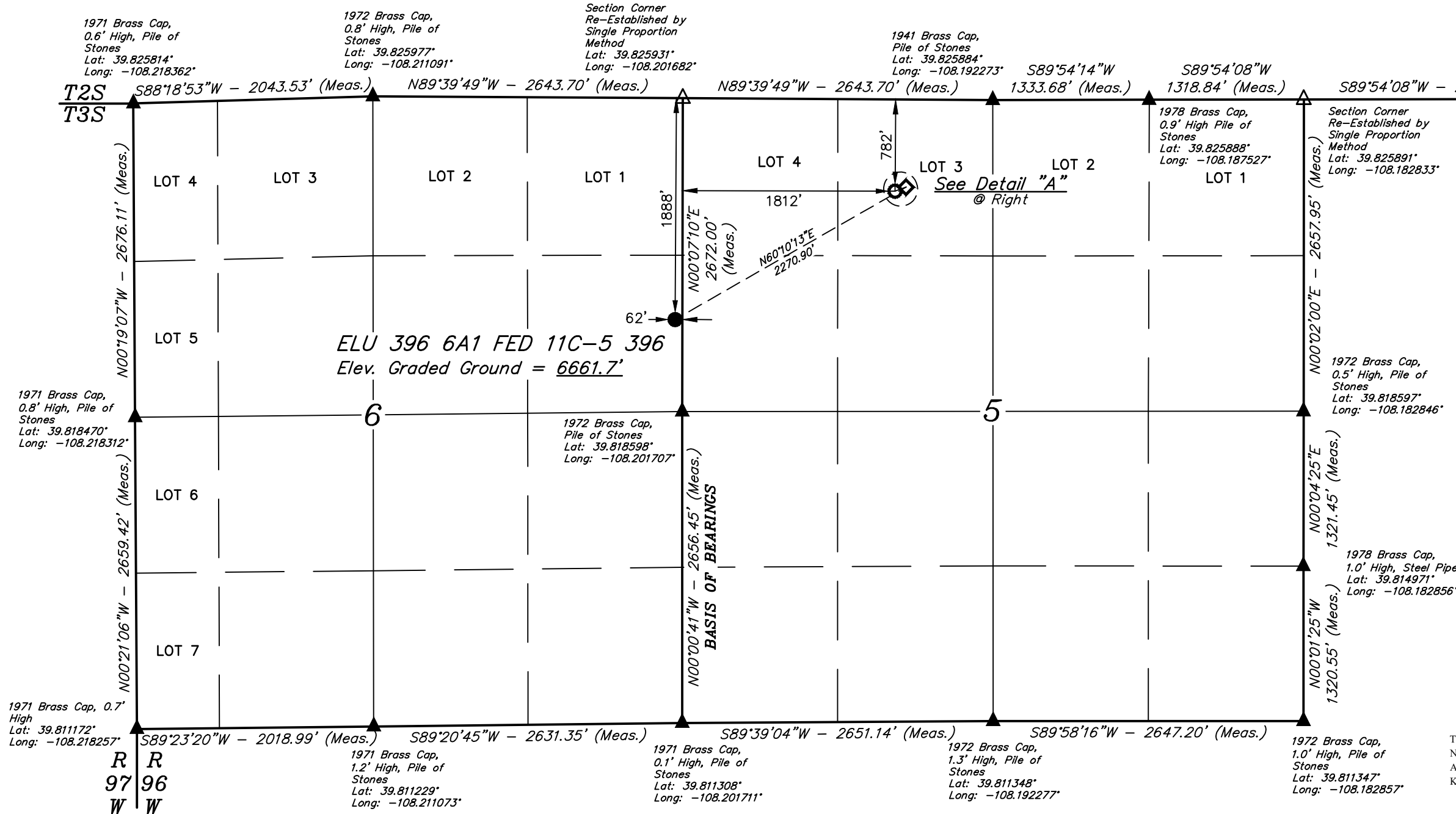
Caerus Piceance LLC

ELU 396 6A1 FED 11C-5 396  
SE 1/4 NE 1/4, SECTION 6, T3S, R96W, 6th P.M.  
RIO BLANCO COUNTY, COLORADO

LINE TABLE		
LINE	DIRECTION	LENGTH
L1	S69°54'21"W	99.97'

**BASIS OF ELEVATION**  
OPUS SOLUTION GENERATED NAVD 88

**BASIS OF BEARINGS**  
BEARINGS ARE A BASED ASSUMPTION THAT THE EAST LINE OF THE SE 1/4 OF SECTION 6 BEARS N00°00'41"W. MONUMENTS DESCRIBED HEREON.



**CERTIFICATION**  
THIS IS TO CERTIFY THAT THE ABOVE PLAT WAS PREPARED FROM FIELD NOTES OF ACTUAL SURVEYS MADE BY ME UNDER MY SUPERVISION AND THAT THE SAME ARE TRUE AND CORRECT TO THE BEST OF MY KNOWLEDGE AND BELIEF.

*Handwritten Signature*  
38130  
REGISTERED LAND SURVEYOR  
REGISTRATION NO. 10000  
STATE OF COLORADO 10-06-23

**NOTE:**  
Distances referenced on plat to section lines are perpendicular.

- LEGEND:**
- = PROPOSED WELLHEAD.
  - ◇ = TOP OF GAS INTERVAL.
  - = TARGET BOTTOM HOLE.
  - ▲ = SECTION CORNERS LOCATED. (NAD 83)
  - △ = SECTION CORNERS RE-ESTABLISHED. (Not Set on Ground.) (NAD 83)

PDOP = 2.7

NAD 83 (SURFACE LOCATION)	NAD 83 (TOP OF GAS INTERVAL)	NAD 83 (TARGET BOTTOM HOLE)
LATITUDE = 39°49'14.70" (39.820751°)	LATITUDE = 39°49'25.85" (39.823848°)	LATITUDE = 39°49'25.51" (39.823754°)
LONGITUDE = -108°12'06.92" (-108.201921°)	LONGITUDE = -108°11'41.67" (-108.194907°)	LONGITUDE = -108°11'42.87" (-108.195242°)
NAD 27 (SURFACE LOCATION)	NAD 27 (TOP OF GAS INTERVAL)	NAD 27 (TARGET BOTTOM HOLE)
LATITUDE = 39°49'14.80" (39.820778°)	LATITUDE = 39°49'25.95" (39.823874°)	LATITUDE = 39°49'25.61" (39.823780°)
LONGITUDE = -108°12'04.61" (-108.201282°)	LONGITUDE = -108°11'39.37" (-108.194269°)	LONGITUDE = -108°11'40.57" (-108.194603°)
UTM, NAD 27 (ZONE 12)	UTM, NAD 27 (ZONE 12)	UTM, NAD 27 (ZONE 12)
N: 14473081.77' E: 2426322.97'	N: 14474271.37' E: 2428257.25'	N: 14474234.15' E: 2428164.47'

REV: 2 10-06-23 M.D. (TGI, BHL MOVE & ADD SECTION CORNERS)

**UINTEAH**  
ENGINEERING & LAND SURVEYING

**UELS, LLC**  
Corporate Office \* 85 South 200 East  
Vernal, UT 84078 \* (435) 789-1017

SURVEYED BY	DAYTON SLAUGH	09-02-22	SCALE
DRAWN BY	M.D.	12-19-22	1" = 1000'

**WELL LOCATION PLAT**