

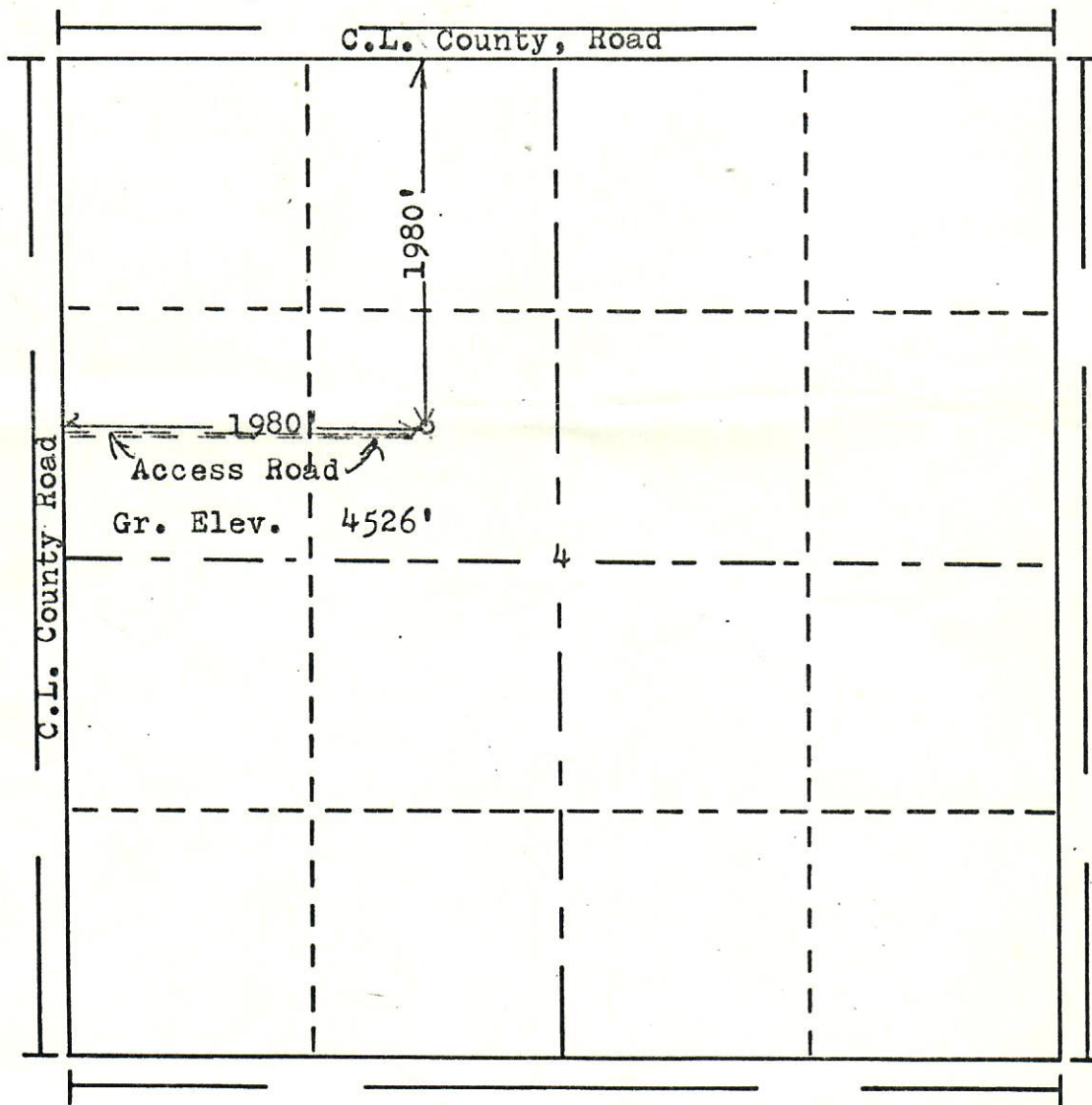


RECEIVED

NOV 27 1974

GOLD. OIL & GAS CONS. COMM.

R. 56W

T.
9
N

Scale... 1" = 1000'

Powers Elevation Company, Inc. of Denver, Colorado
has in accordance with a request from Mr. Abell
for Pauley Petroleum

determined the location of No. 1 Government- Griffith
to be CSE NW Section 4 Township 9N
Range 56W of the 6th Principal Meridian
Weld County, Colorado

74 323

I hereby certify that this plat is an
accurate representation of a correct
survey showing the location of

Date: 11-13-74

Brian H. Halliday
Licensed Land Surveyor No. 2853
State of Colorado