

EDITH ANN 33-21 (12320624_FL): Abandon in Place Layout

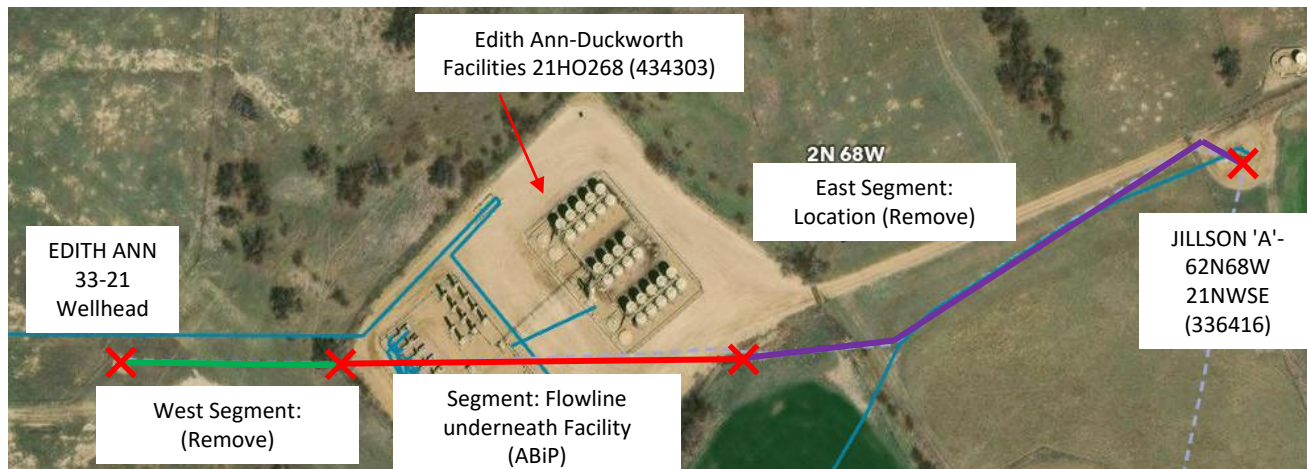
40.122487, -105.006202

NWSE Sec. 21 T2N, R68W, 6th PM

Weld County, Colorado

Crestone Peak Resources (10633)

Flowline Unique OperFeatID	Line Type	Start Location Latitude	Start Location Longitude	End Location Latitude (Cut Point)	End Location Longitude (Cut Point)	Segment Length (ft)	Segment	Abandonment Type
12320624_FL	Multiphase	40.122487	-105.006202	40.122525	-105.005293	260	Green	Remove
12320624_FL	Multiphase	40.122525	-105.005293	40.122516	-105.003695	480	Red	ABiP
12320624_FL	Multiphase	40.122516	-105.003695	40.123106	-105.001647	610	Purple	Remove



Segment End Points

✗ Indicates where flowline abandonment type changes