

This topographic map displays a study area with various features. Contour lines are shown in brown, with elevations ranging from 4850 to 5050 feet. A red box labeled "Site" points to a blue box on a contour line. A scale bar in the bottom left indicates 1 inch = 2000 feet. A north arrow is also present. Numbered sites (8, 9, 10, 15, 16, 17, 20, 21, 22) are marked with red dots. Wells are labeled with "Well" and elevations (e.g., Well 4849, Well 4876, Well 4925). A blue line represents a water feature, possibly a stream or road. The map is divided into sections by a grid of red and blue lines.

Impacted Area 15' x 22' x 1' deep

X

Release Point

Produced Water LACT building

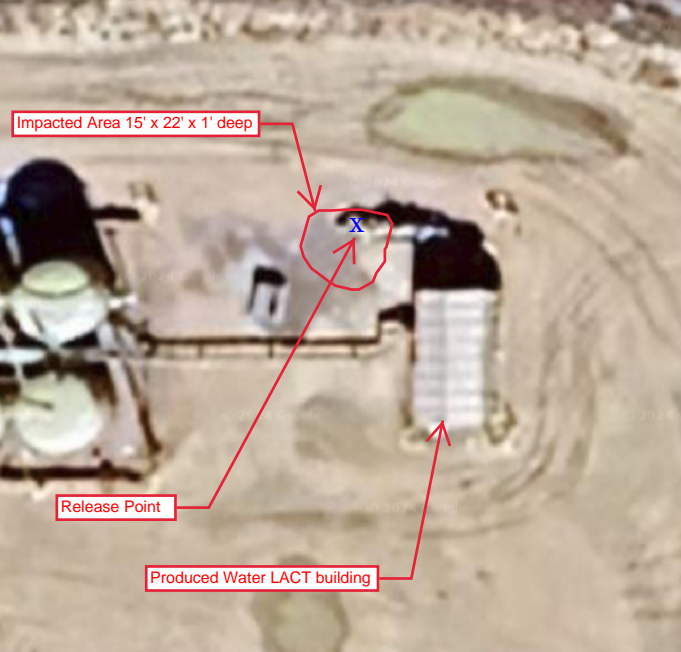


Photo Log



Description:

#1 - DP406/Hullabaloo Facility

Photo Log



Description:

#2 - Looking northeast at pig launcher where release occurred

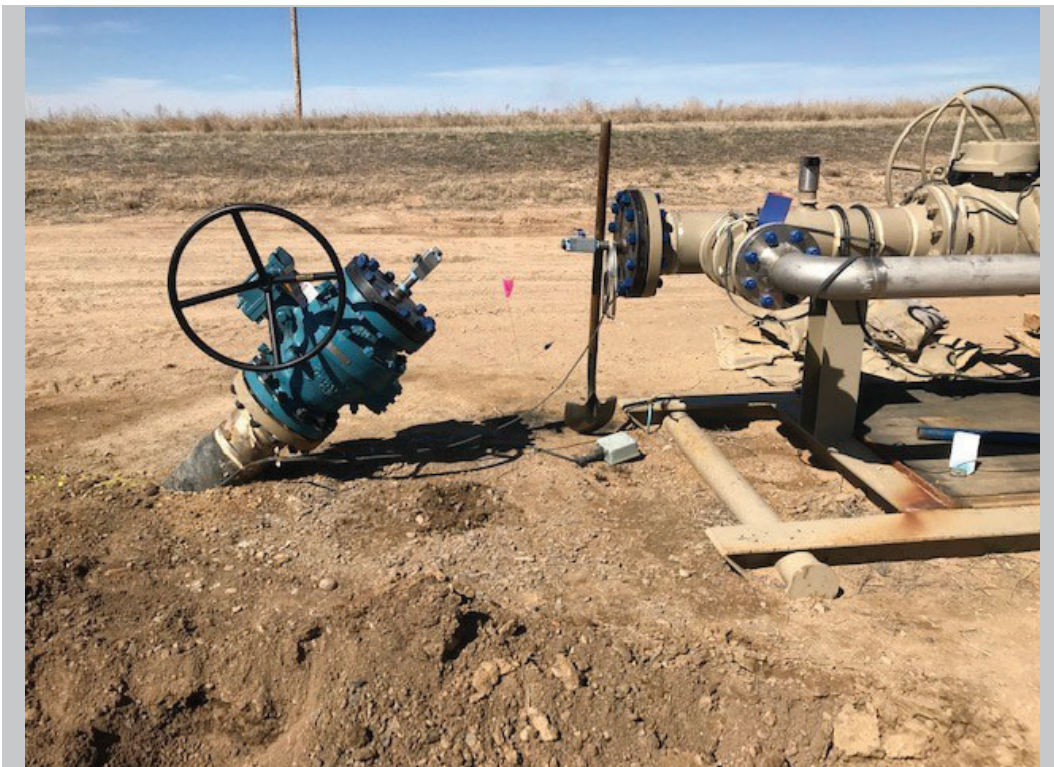
Photo Log



Description:

#3 - Looking southeast at impacted soil area that has been partially excavated. Note LACT building in background.

Photo Log



Description:

#4 - Looking north at failure location; failed section has been removed from system.

Photo Log



Description:

#5 - Failed section of pipe. Band on the left side of pipe was used as a leak clamp.

Photo Log



Description:

#6 - Inside of failed pipe section.