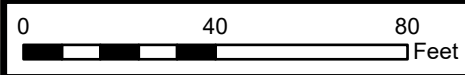
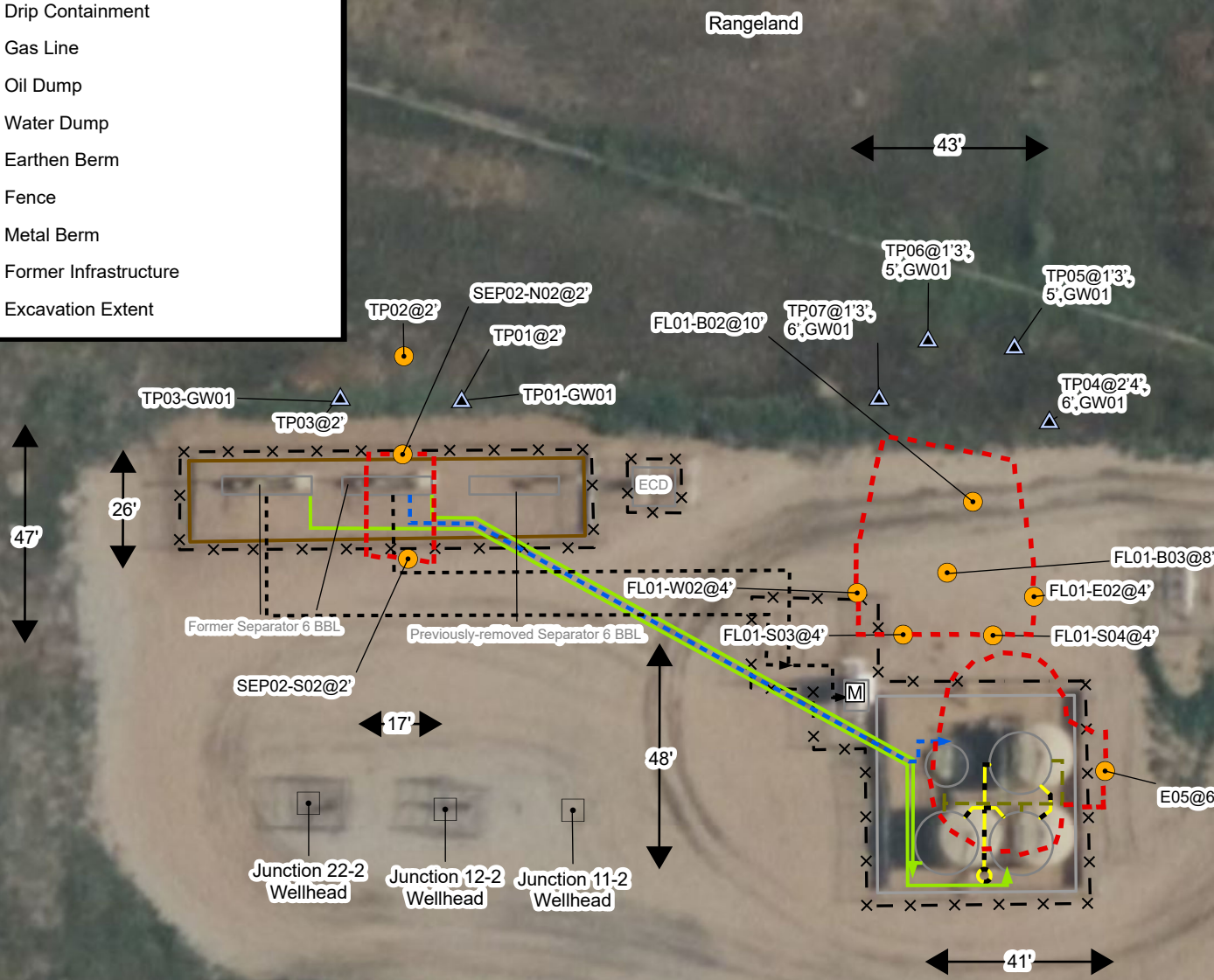


Legend

- P&A'd Wellhead
- Background Soil Sample
- Combined Soil & Groundwater Sample
- Soil Sample
- Soil Screening
- Meter House
- Drain Line
- Drip Containment
- Gas Line
- Oil Dump
- Water Dump
- Earthen Berm
- Fence
- Metal Berm
- Former Infrastructure
- Excavation Extent



Sources: Environmental Systems Research Institute (ESRI)

Excavation Site Map (12/13/2023-12/15/2023)

Junction 11, 12, 22-2 O SA Facility
 Kerr-McGee Oil & Gas Onshore, LP
 NWSW SEC 2-T2N-R68W
 Weld County, CO
 Project Number: 09A1417263

FIGURE
 1B

