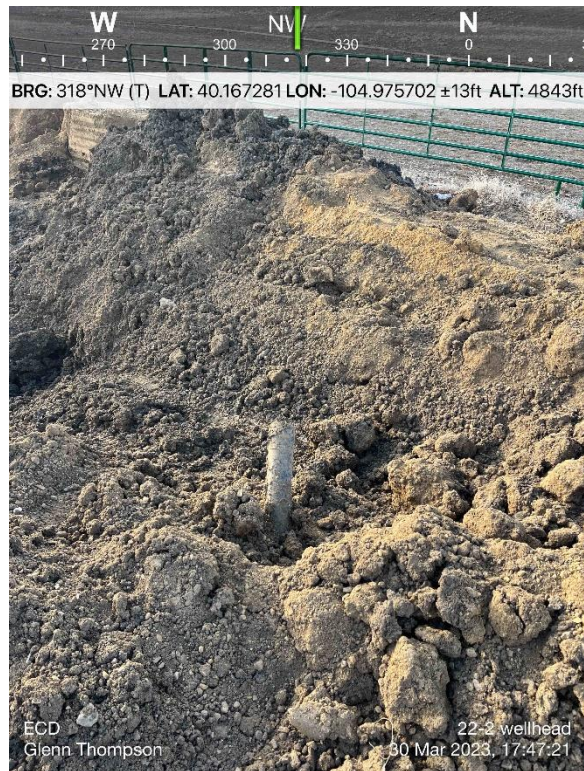
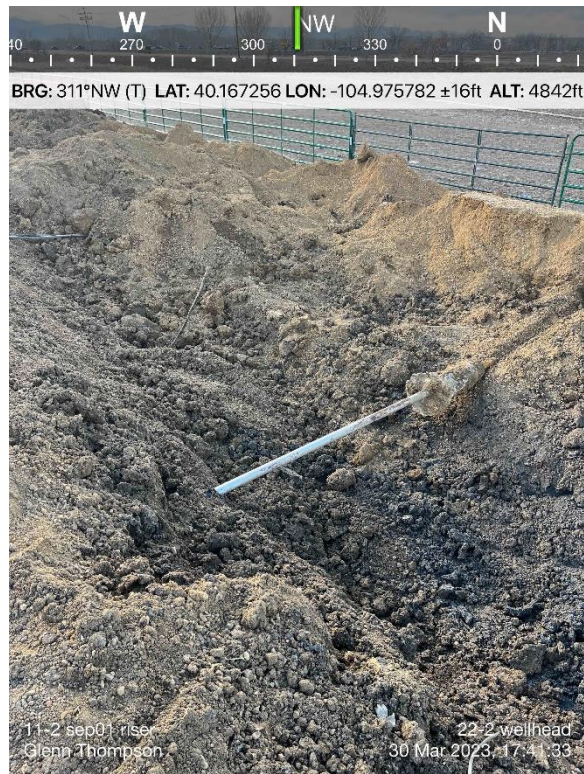


PHOTO LOG
JUNCTION 11, 12, 22-2 O SA FACILITY
WELD COUNTY, COLORADO
KERR-MCGEE OIL & GAS ONSHORE, LP

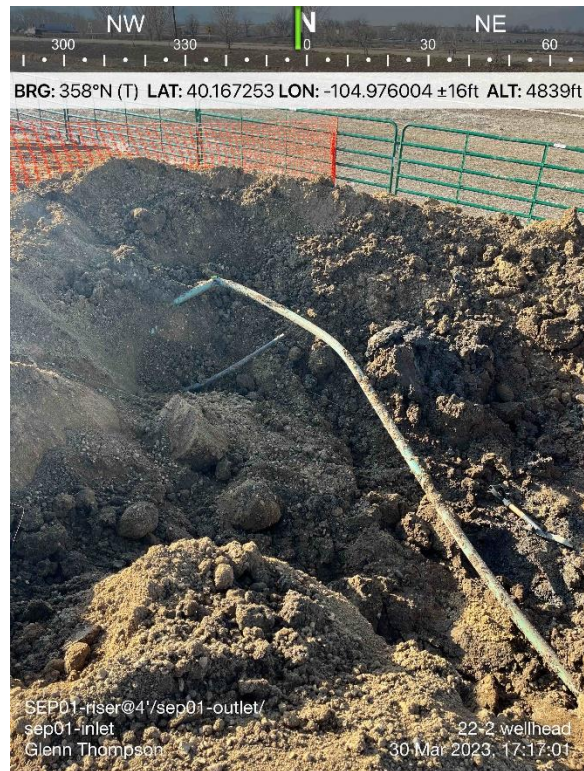


Emissions Control Device Excavation

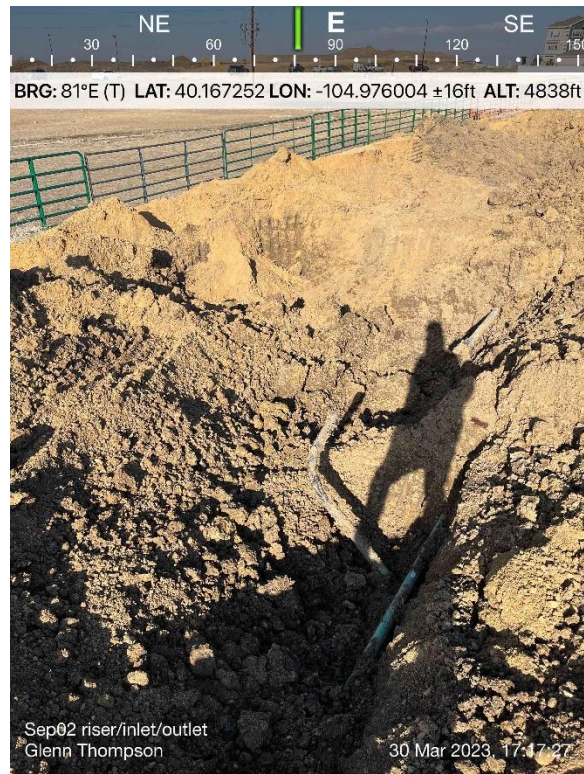


Separator Riser 01 Excavation

PHOTO LOG
JUNCTION 11, 12, 22-2 O SA FACILITY
WELD COUNTY, COLORADO
KERR-MCGEE OIL & GAS ONSHORE, LP

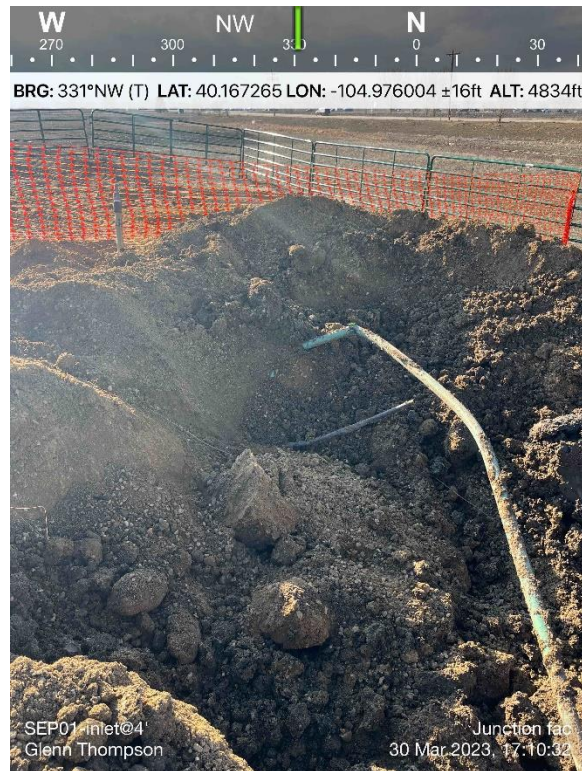


Separator Riser 01 Excavation



Separator Riser 02 Excavation

PHOTO LOG
JUNCTION 11, 12, 22-2 O SA FACILITY
WELD COUNTY, COLORADO
KERR-MCGEE OIL & GAS ONSHORE, LP

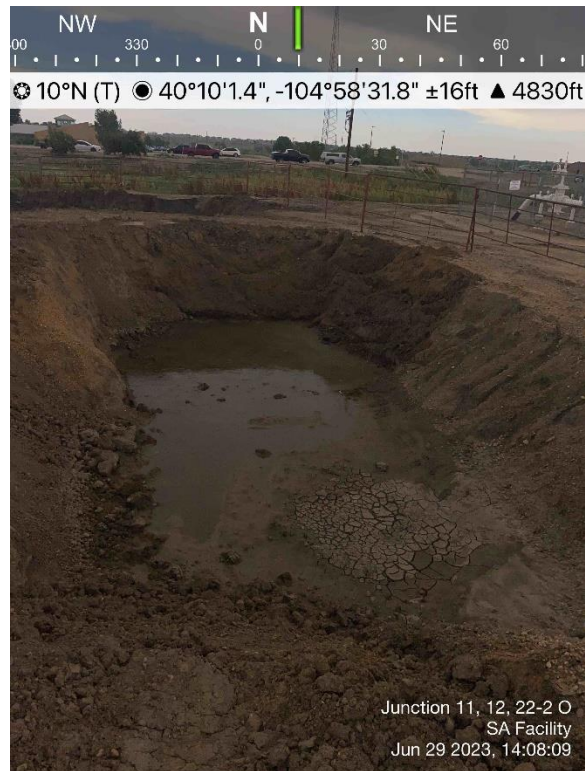


Separator Inlet 01 Excavation

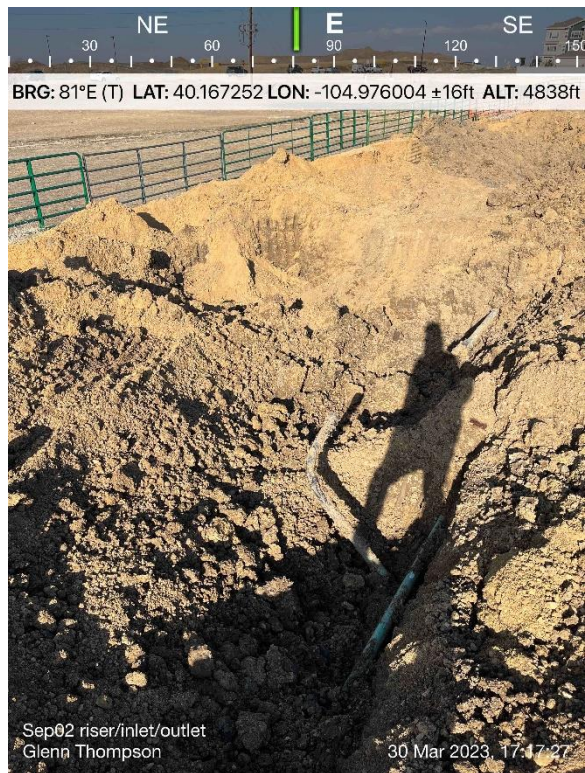


Separator Riser 01 Excavation

PHOTO LOG
JUNCTION 11, 12, 22-2 O SA FACILITY
WELD COUNTY, COLORADO
KERR-MCGEE OIL & GAS ONSHORE, LP



Groundwater in AST Excavation



Separator Riser 02 Excavation

PHOTO LOG
JUNCTION 11, 12, 22-2 O SA FACILITY
WELD COUNTY, COLORADO
KERR-MCGEE OIL & GAS ONSHORE, LP

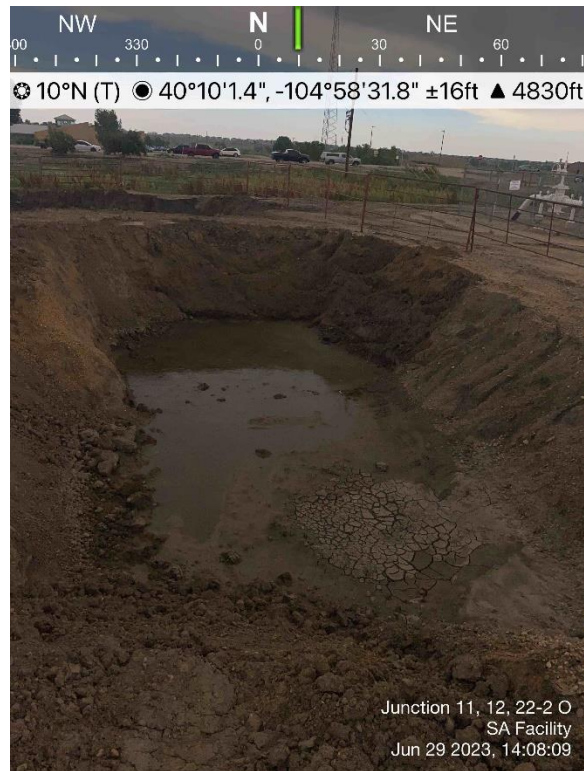


Separator Inlet 01 Excavation



Separator Riser 01 Excavation

PHOTO LOG
JUNCTION 11, 12, 22-2 O SA FACILITY
WELD COUNTY, COLORADO
KERR-MCGEE OIL & GAS ONSHORE, LP



Groundwater in AST Excavation

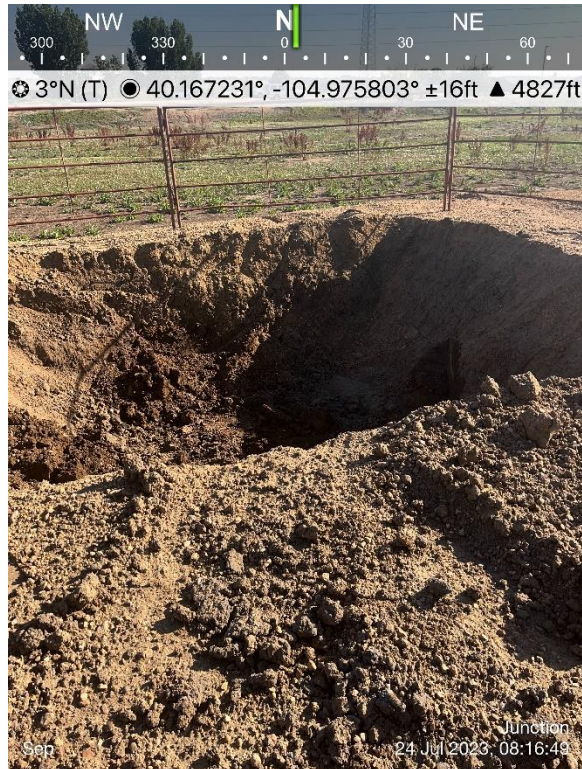


Groundwater in AST Excavation

PHOTO LOG
JUNCTION 11, 12, 22-2 O SA FACILITY
WELD COUNTY, COLORADO
KERR-MCGEE OIL & GAS ONSHORE, LP



Groundwater in FL01 Excavation

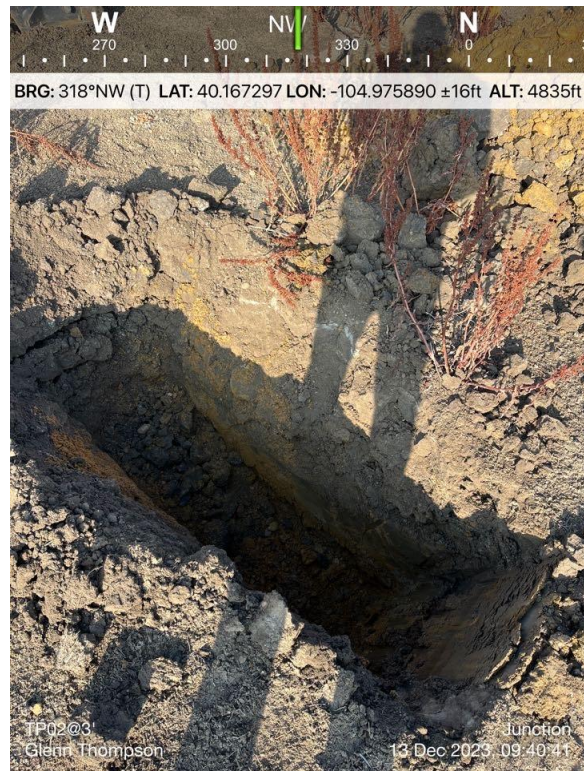


Separator Excavation

PHOTO LOG
JUNCTION 11, 12, 22-2 O SA FACILITY
WELD COUNTY, COLORADO
KERR-MCGEE OIL & GAS ONSHORE, LP

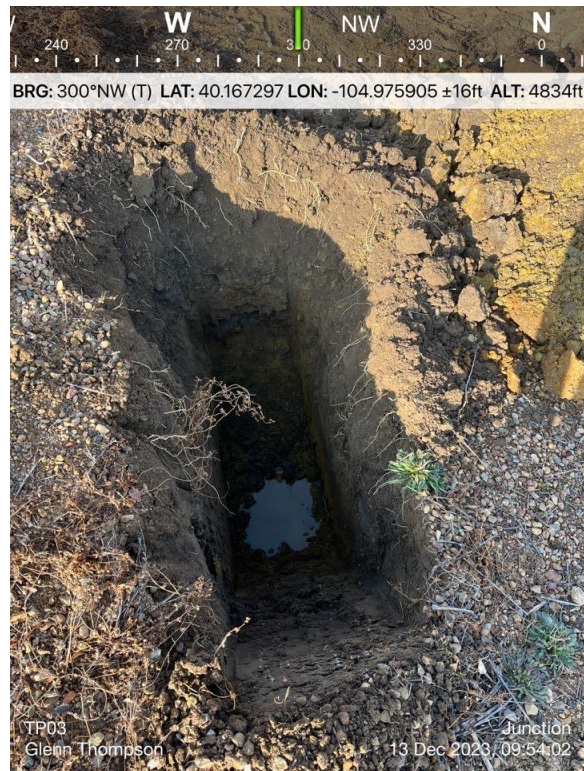


Groundwater in Test Pit 01 Excavation

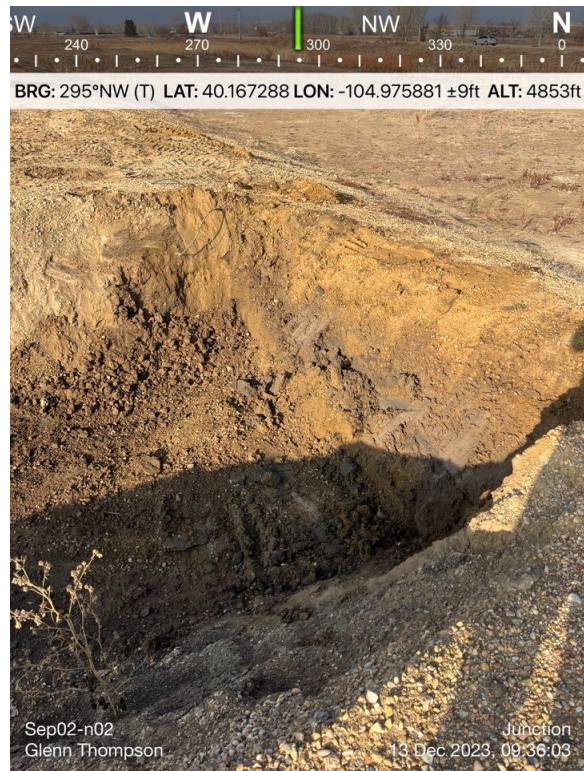


Test Pit 02 Excavation

PHOTO LOG
JUNCTION 11, 12, 22-2 O SA FACILITY
WELD COUNTY, COLORADO
KERR-MCGEE OIL & GAS ONSHORE, LP

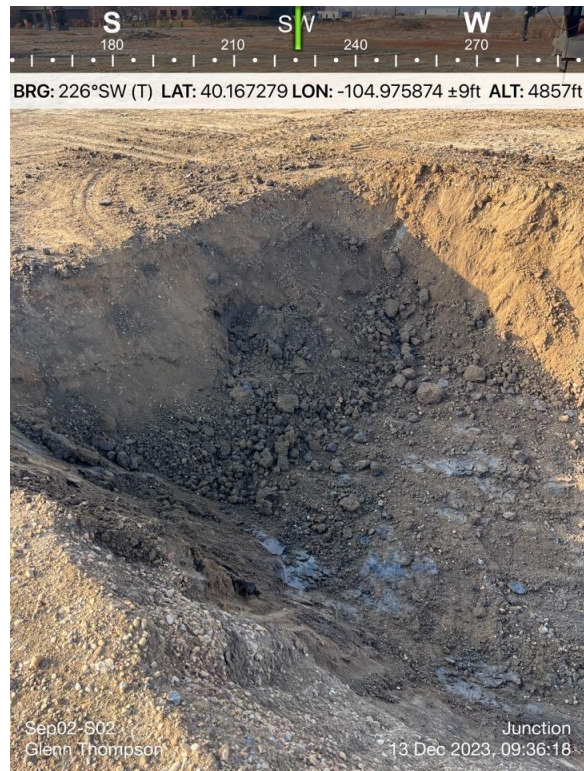


Ground Water in Test Pit 03 Excavation



Separator N02 Sample location

PHOTO LOG
JUNCTION 11, 12, 22-2 O SA FACILITY
WELD COUNTY, COLORADO
KERR-MCGEE OIL & GAS ONSHORE, LP



Separator S02 Sample location



Ground Water in Test Pit 05 Excavation

PHOTO LOG
JUNCTION 11, 12, 22-2 O SA FACILITY
WELD COUNTY, COLORADO
KERR-MCGEE OIL & GAS ONSHORE, LP

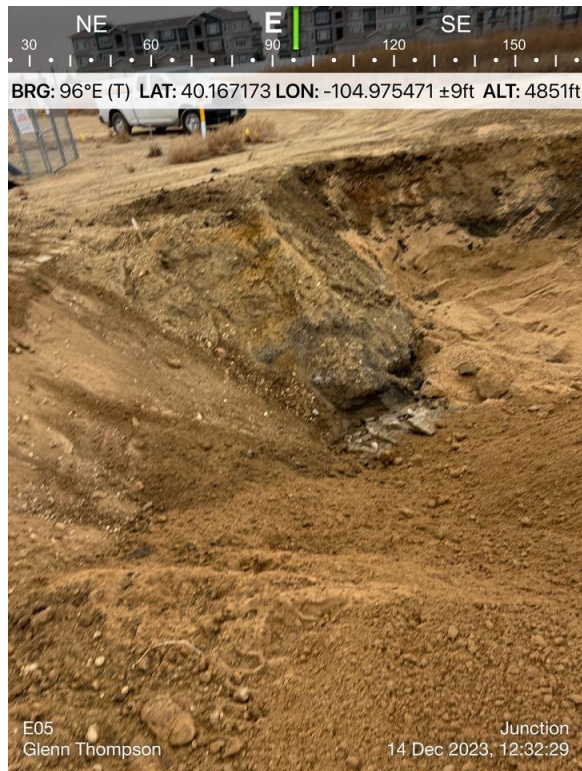


Ground Water in Test Pit 06 Excavation



Ground Water in Test Pit 07 Excavation

PHOTO LOG
JUNCTION 11, 12, 22-2 O SA FACILITY
WELD COUNTY, COLORADO
KERR-MCGEE OIL & GAS ONSHORE, LP



E05 Sample Location



Ground Water in FL01 Excavation

PHOTO LOG
JUNCTION 11, 12, 22-2 O SA FACILITY
WELD COUNTY, COLORADO
KERR-MCGEE OIL & GAS ONSHORE, LP



Ground Water in FL01 Excavation



Ground Water in FL01 Excavation

PHOTO LOG
JUNCTION 11, 12, 22-2 O SA FACILITY
WELD COUNTY, COLORADO
KERR-MCGEE OIL & GAS ONSHORE, LP



Background Sample Location



Background Sample Location