

Section 29 Township 9 North Range 55 West

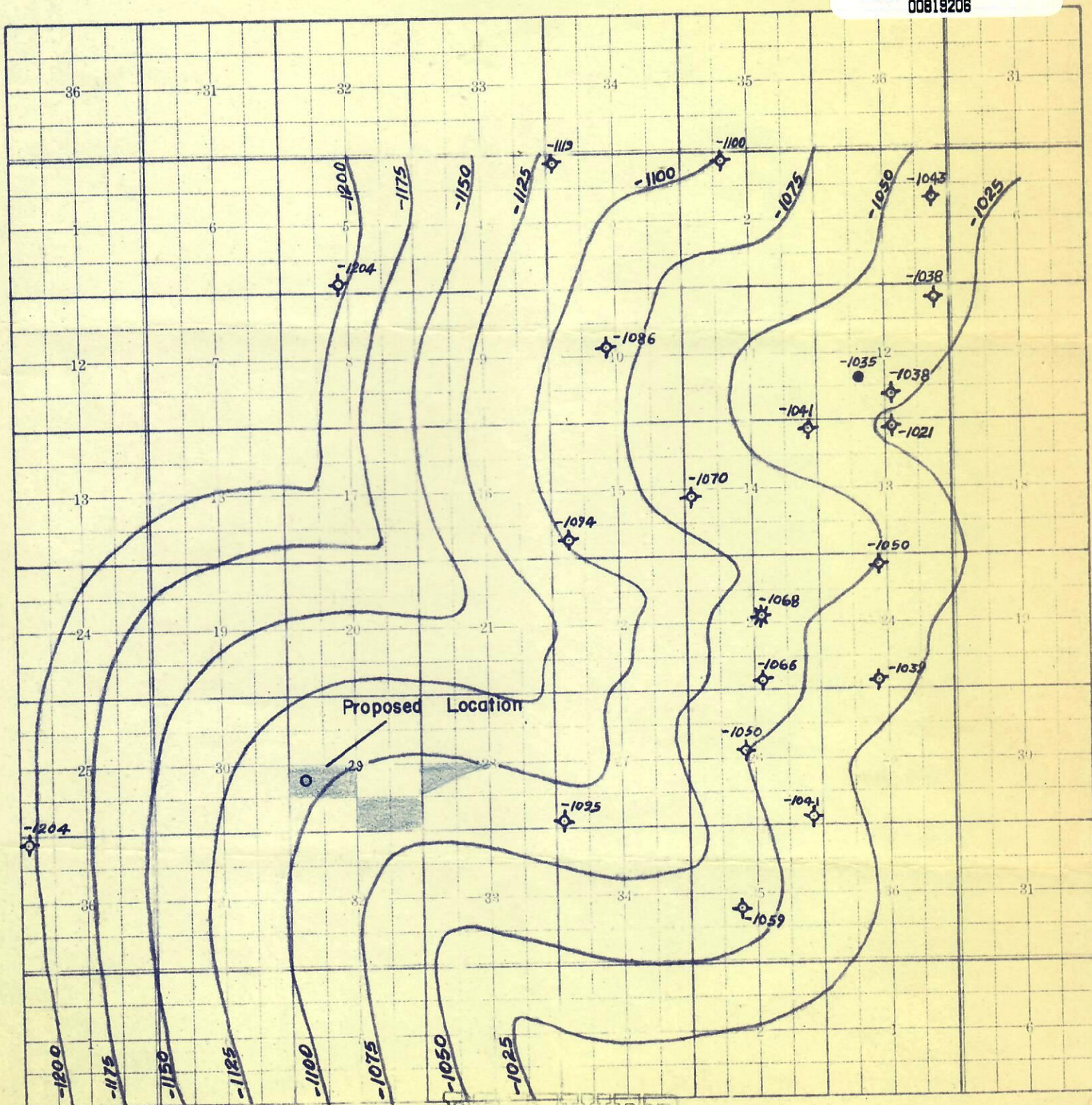
LOGAN

County, State of **COLORADO**

Island Township Plat, — Scale 1-inch to 1-mile



00819206



Western Prairie Oil



Dry Hole



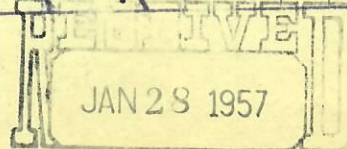
Oil Well



Gas Well



Location

OIL & GAS
CONSERVATION COMMISSION

J Structure:
25' Contour Interval
Geologist: W.H. Young
10 January 1957