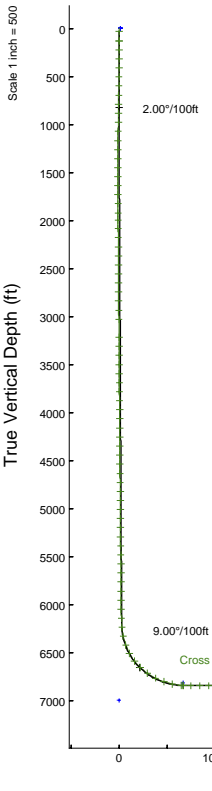
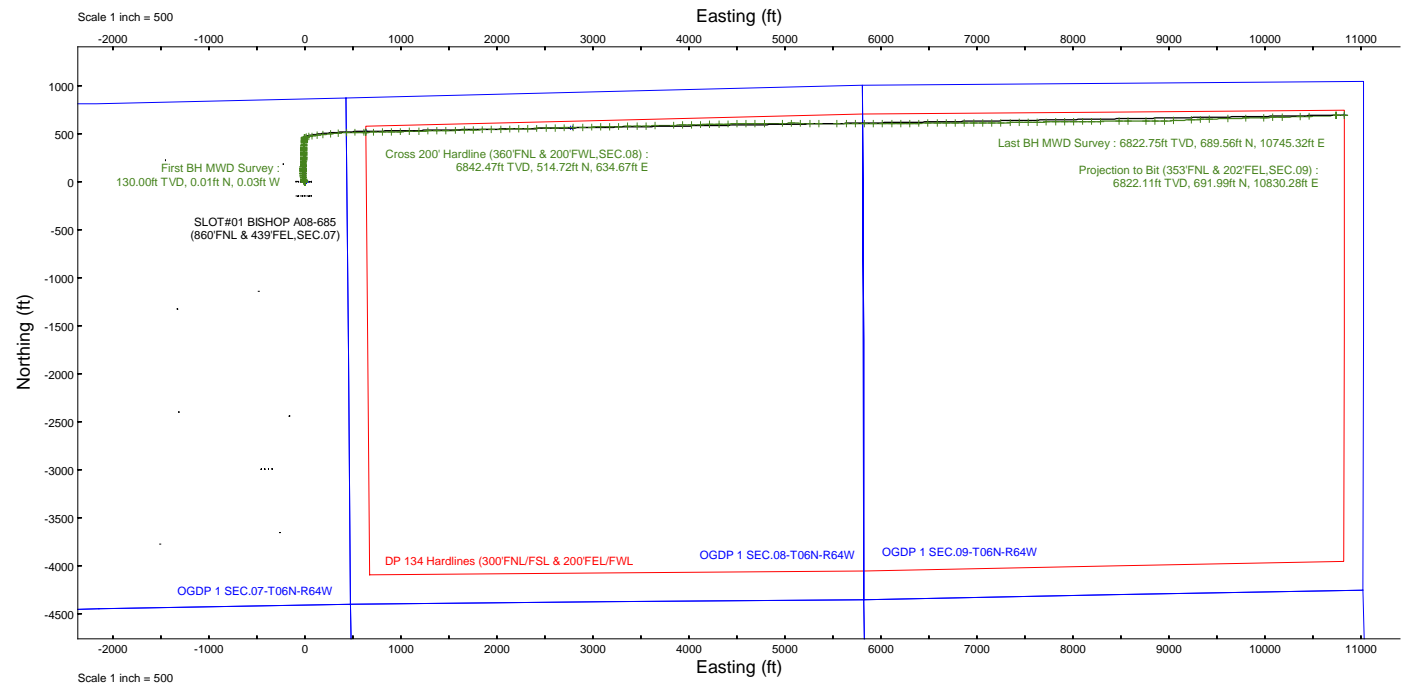


NOBLE ENERGY, INC

Location: COLORADO Slot: SLOT#01 BISHOP A08-685 (860'FNL & 439'FEL,SEC.07)
 Field: WELD COUNTY (NOBLE NAD 83 GRID) Well: BISHOP A08-685
 Facility: SEC.07-T06N-R64W Wellbore: BISHOP A08-685 PWB

Plot reference wellpath is BISHOP A08-685 (REV-D.0) PWP	Grid System: NAD83 / Lambert Colorado SP, Northern Zone (501), US feet
True vertical depths are referenced to RIG (4741'GL+29'KB = 4770'RKB) (RKB)	North Reference: Grid north
Reference wellpath measured depths are referenced to RIG (4741'GL+29'KB = 4770'RKB) (RKB)	Scale: True distance
RIG (4741'GL+29'KB = 4770'RKB) (RKB) to Mean Sea Level: 4770 feet	Coordinates are in feet referenced to Slot
Mean Sea Level to Ground level (At Slot: SLOT#01 BISHOP A08-685 (860'FNL & 439'FEL,SEC.07)): 0 feet	Depths are in feet
Offset wellpath MDs are referenced to each path's default MD datum	Created by: marsam01 on 2024-03-07; Database: WA_Denver

Location Information						
Facility Name			Grid East (US ft)	Grid North (US ft)	Latitude	Longitude
SEC.07-T06N-R64W			3254380.716	1428262.611	40°30'19.3680"N	104°35'6.7200"W
Slot	Local N (ft)	Local E (ft)	Grid East (US ft)	Grid North (US ft)	Latitude	Longitude
SLOT#01 BISHOP A08-685 (860'FNL & 439'FEL,SEC.07)	0.20	-16.13	3254364.585	1428262.809	40°30'19.3716"N	104°35'6.9286"W
RIG (4741'GL+29'KB = 4770'RKB) (RKB) to Ground level (At Slot: SLOT#01 BISHOP A08-685 (860'FNL & 439'FEL,SEC.07))					4770ft	
Mean Sea Level to Ground level (At Slot: SLOT#01 BISHOP A08-685 (860'FNL & 439'FEL,SEC.07))					0ft	
RIG (4741'GL+29'KB = 4770'RKB) (RKB) to Mean Sea Level					4770ft	



MD (ft)	INC (deg)	AZ (deg)	TVD (ft)	Local N (ft)	Local E (ft)	Comment
130	0.04	292.97	130	0.01	-0.03	First BH MWD Survey
7220.82	86.829	89.853	6842.47	514.72	634.67	Cross 200' Hardline (360'FNL & 200'FWL, SEC.08)
17334	90.43	88.36	6822.75	689.56	10745.32	Last BH MWD Survey
17419	90.43	88.36	6822.11	691.99	10830.28	Projection to Bit (353'FNL & 202'FEL, SEC.09)

Last BH MWD Survey : 90.43° Inc, 17334.00ft MD, 6822.75ft TVD, 10767.42ft VS
 Projection to Bit (353'FNL & 202'FEL, SEC.09) : 90.43° Inc, 17419.00ft MD, 6822.11ft TVD, 10852.37ft VS

Vertical Section (ft)
 Azimuth 86.33° with reference 0.00 N, 0.00 E
 Scale 1 inch = 500

REFERENCE WELLPATH IDENTIFICATION

Operator	NOBLE ENERGY, INC	Well	BISHOP A08-685
Field	WELD COUNTY (NOBLE NAD 83 GRID)	API/Legal	05-123-52075
Facility	SEC.07-T06N-R64W	Wellbore	BISHOP A08-685 AWB
Slot	SLOT#01 BISHOP A08-685 (860'FNL & 439'FEL,SEC.07)		

REPORT SETUP INFORMATION

Projection System	NAD83 / Lambert Colorado SP, Northern Zone (501), US feet	Software System	WellArchitect® 6.0
North Reference	Grid	User	Martsam01
Scale	0.999967	Report Generated	3/4/2024 at 5:27:51 PM
Convergence at slot	0.59° East	Database	WA_Denver

WELLPATH LOCATION

	Local coordinates		Grid coordinates		Geographic coordinates	
	North[ft]	East[ft]	Easting[US ft]	Northing[US ft]	Latitude	Longitude
Slot Location	0.20	-16.13	3254364.59	1428262.81	40.5053810°	-104.5852580°
Facility Reference Pt			3254380.72	1428262.61	40.5053800°	-104.5852000°
Field Reference Pt			3000000.00	4454105.15	48.7761986°	-105.5000000°

WELLPATH DATUM

Calculation method	Minimum curvature	RIG (4741'GL+29'KB = 4770'RKB) (RKB) to Facility Vertical Datum	4770.00ft
Horizontal Reference Pt	Slot	RIG (4741'GL+29'KB = 4770'RKB) (RKB) to Mean Sea Level	4770.00ft
Vertical Reference Pt	RIG (4741'GL+29'KB = 4770'RKB) (RKB)	RIG (4741'GL+29'KB = 4770'RKB) (RKB) to Ground Level at Slot (SLOT#01 BISHOP A08-685 (860'FNL & 439'FEL,SEC.07))	4770.00ft
MD Reference Pt	RIG (4741'GL+29'KB = 4770'RKB) (RKB)	Section Origin	N 0.00, E 0.00 ft
Field Vertical Reference	Mean Sea Level	Section Azimuth	86.33°

REFERENCE WELLPATH IDENTIFICATION			
Operator	NOBLE ENERGY, INC	Well	BISHOP A08-685
Field	WELD COUNTY (NOBLE NAD 83 GRID)	API/Legal	05-123-52075
Facility	SEC.07-T06N-R64W	Wellbore	BISHOP A08-685 AWB
Slot	SLOT#01 BISHOP A08-685 (860'FNL & 439'FEL,SEC.07)		

WELLPATH DATA (175 stations) † = interpolated, ‡ = extrapolated station

MD [ft]	Inclination [°]	Azimuth [°]	TVD [ft]	Vert Sect [ft]	North [ft]	East [ft]	Latitude	Longitude	DLS [°/100ft]	Comments
0.00†	0.000	292.970	0.00	0.00	0.00	0.00	40.5053810	-104.5852580	0.00	
29.00	0.000	292.970	29.00	0.00	0.00	0.00	40.5053810	-104.5852580	0.00	
130.00	0.040	292.970	130.00	-0.03	0.01	-0.03	40.5053810	-104.5852581	0.04	First BH MWD Survey
221.00	0.340	325.750	221.00	-0.20	0.25	-0.21	40.5053817	-104.5852588	0.34	
314.00	0.110	253.160	314.00	-0.42	0.45	-0.45	40.5053823	-104.5852596	0.35	
409.00	0.220	279.580	409.00	-0.69	0.46	-0.72	40.5053823	-104.5852606	0.14	
504.00	0.220	325.840	504.00	-0.96	0.64	-1.00	40.5053828	-104.5852616	0.18	
598.00	0.440	323.760	598.00	-1.25	1.08	-1.32	40.5053840	-104.5852627	0.23	
693.00	0.790	306.250	692.99	-1.95	1.76	-2.06	40.5053859	-104.5852654	0.41	
788.00	2.200	325.670	787.96	-3.38	3.65	-3.62	40.5053911	-104.5852709	1.56	
882.00	3.350	336.380	881.85	-5.23	7.66	-5.74	40.5054022	-104.5852783	1.34	
977.00	3.870	341.100	976.66	-7.02	13.23	-7.89	40.5054175	-104.5852859	0.63	
1072.00	4.580	345.600	1071.40	-8.57	19.94	-9.87	40.5054360	-104.5852927	0.82	
1167.00	4.750	346.880	1166.08	-9.92	27.45	-11.71	40.5054567	-104.5852991	0.21	
1261.00	5.420	352.090	1259.71	-10.89	35.63	-13.20	40.5054792	-104.5853041	0.86	
1356.00	5.550	353.360	1354.28	-11.46	44.64	-14.35	40.5055039	-104.5853079	0.19	
1451.00	6.530	357.310	1448.75	-11.61	54.60	-15.13	40.5055313	-104.5853104	1.12	
1546.00	7.120	358.730	1543.08	-11.27	65.88	-15.52	40.5055623	-104.5853114	0.65	
1640.00	6.400	1.320	1636.42	-10.57	76.94	-15.53	40.5055926	-104.5853110	0.83	
1735.00	5.200	1.700	1730.93	-9.71	86.54	-15.28	40.5056190	-104.5853097	1.26	
1830.00	4.760	3.070	1825.58	-8.84	94.78	-14.94	40.5056416	-104.5853082	0.48	
1925.00	4.680	356.220	1920.25	-8.39	102.58	-14.98	40.5056630	-104.5853081	0.60	
2003.00	4.450	355.620	1998.01	-8.43	108.78	-15.42	40.5056800	-104.5853094	0.30	
2089.00	4.370	358.310	2083.75	-8.36	115.38	-15.77	40.5056981	-104.5853104	0.26	
2184.00	4.980	2.550	2178.44	-7.79	123.11	-15.70	40.5057194	-104.5853099	0.74	
2279.00	4.950	0.520	2273.08	-7.04	131.33	-15.48	40.5057419	-104.5853088	0.19	
2373.00	4.860	0.740	2366.74	-6.44	139.37	-15.39	40.5057640	-104.5853082	0.10	
2468.00	4.980	1.920	2461.39	-5.73	147.51	-15.20	40.5057863	-104.5853072	0.17	
2563.00	5.070	1.840	2556.02	-4.92	155.83	-14.93	40.5058091	-104.5853059	0.10	
2658.00	4.870	2.960	2650.66	-4.05	164.05	-14.58	40.5058317	-104.5853043	0.23	
2752.00	4.890	0.410	2744.32	-3.31	172.04	-14.35	40.5058536	-104.5853032	0.23	
2847.00	5.040	1.460	2838.97	-2.65	180.26	-14.21	40.5058762	-104.5853024	0.18	
2942.00	5.030	0.240	2933.60	-1.99	188.60	-14.09	40.5058991	-104.5853017	0.11	
3037.00	4.670	1.710	3028.26	-1.34	196.63	-13.96	40.5059211	-104.5853009	0.40	
3226.00	5.060	2.540	3216.58	0.28	212.65	-13.36	40.5059650	-104.5852981	0.21	
3321.00	4.810	3.900	3311.23	1.26	220.81	-12.90	40.5059874	-104.5852962	0.29	
3415.00	4.870	1.660	3404.89	2.15	228.73	-12.52	40.5060091	-104.5852945	0.21	
3510.00	4.800	0.350	3499.55	2.80	236.73	-12.38	40.5060311	-104.5852937	0.14	
3605.00	4.920	3.160	3594.21	3.56	244.78	-12.13	40.5060532	-104.5852925	0.28	
3699.00	4.680	0.220	3687.88	4.30	252.64	-11.89	40.5060747	-104.5852914	0.37	
3794.00	4.730	0.210	3782.56	4.83	260.43	-11.86	40.5060961	-104.5852910	0.05	
3889.00	4.740	1.590	3877.24	5.46	268.27	-11.74	40.5061176	-104.5852903	0.12	
3983.00	4.680	1.680	3970.92	6.17	275.98	-11.52	40.5061388	-104.5852892	0.06	
4078.00	4.580	0.600	4065.61	6.81	283.65	-11.36	40.5061599	-104.5852883	0.14	
4173.00	4.670	2.040	4160.30	7.48	291.31	-11.19	40.5061809	-104.5852874	0.15	

REFERENCE WELLPATH IDENTIFICATION				
Operator	NOBLE ENERGY, INC		Well	BISHOP A08-685
Field	WELD COUNTY (NOBLE NAD 83 GRID)		API/Legal	05-123-52075
Facility	SEC.07-T06N-R64W		Wellbore	BISHOP A08-685 AWB
Slot	SLOT#01 BISHOP A08-685 (860'FNL & 439'FEL,SEC.07)			

WELLPATH DATA (175 stations) † = interpolated, ‡ = extrapolated station

MD [ft]	Inclination [°]	Azimuth [°]	TVD [ft]	Vert Sect [ft]	North [ft]	East [ft]	Latitude	Longitude	DLS [°/100ft]	Comments
4268.00	4.600	1.110	4254.99	8.18	298.98	-10.97	40.5062019	-104.5852864	0.11	
4362.00	4.740	2.280	4348.68	8.90	306.63	-10.75	40.5062229	-104.5852853	0.18	
4457.00	4.630	2.940	4443.36	9.75	314.38	-10.39	40.5062442	-104.5852837	0.13	
4552.00	4.660	2.880	4538.05	10.63	322.07	-10.00	40.5062653	-104.5852820	0.03	
4647.00	4.430	0.280	4632.75	11.32	329.59	-9.79	40.5062859	-104.5852810	0.32	
4741.00	4.580	2.290	4726.46	11.96	336.97	-9.62	40.5063062	-104.5852801	0.23	
4836.00	4.690	3.570	4821.15	12.85	344.63	-9.23	40.5063272	-104.5852784	0.16	
4931.00	4.970	4.030	4915.81	13.89	352.62	-8.70	40.5063491	-104.5852762	0.30	
5026.00	4.920	0.490	5010.46	14.73	360.79	-8.38	40.5063715	-104.5852747	0.33	
5120.00	4.860	1.790	5104.12	15.40	368.81	-8.22	40.5063935	-104.5852739	0.13	
5215.00	4.760	5.390	5198.78	16.41	376.75	-7.72	40.5064153	-104.5852718	0.33	
5310.00	4.820	1.820	5293.45	17.41	384.67	-7.22	40.5064370	-104.5852697	0.32	
5405.00	5.590	2.010	5388.06	18.25	393.28	-6.93	40.5064606	-104.5852683	0.81	
5499.00	4.930	2.760	5481.66	19.16	401.89	-6.58	40.5064843	-104.5852668	0.71	
5594.00	4.840	1.500	5576.32	19.97	409.97	-6.28	40.5065064	-104.5852654	0.15	
5689.00	4.610	0.500	5670.99	20.61	417.80	-6.14	40.5065279	-104.5852646	0.26	
5783.00	4.850	2.580	5764.67	21.32	425.54	-5.93	40.5065492	-104.5852635	0.31	
5878.00	4.870	1.640	5859.33	22.13	433.59	-5.63	40.5065712	-104.5852622	0.09	
5973.00	4.650	1.800	5954.00	22.87	441.47	-5.40	40.5065928	-104.5852610	0.23	
6068.00	4.790	2.500	6048.68	23.66	449.28	-5.10	40.5066143	-104.5852597	0.16	
6163.00	4.910	15.030	6143.34	25.39	457.17	-3.87	40.5066359	-104.5852550	1.12	
6258.00	5.300	77.000	6238.03	31.03	462.08	1.46	40.5066492	-104.5852356	5.54	
6352.00	12.050	76.850	6330.90	45.01	465.30	15.26	40.5066577	-104.5851859	7.18	
6447.00	19.830	81.960	6422.19	70.90	469.81	40.91	40.5066693	-104.5850935	8.31	
6542.00	27.850	81.880	6509.01	109.15	475.21	78.90	40.5066831	-104.5849567	8.44	
6637.00	37.720	81.500	6588.78	160.36	482.66	129.73	40.5067021	-104.5847736	10.39	
6731.00	47.180	83.250	6658.06	223.58	490.98	192.55	40.5067231	-104.5845474	10.14	
6826.00	55.540	84.130	6717.33	297.64	499.09	266.24	40.5067433	-104.5842821	8.83	
6921.00	62.340	85.760	6766.32	378.94	506.22	347.26	40.5067606	-104.5839905	7.31	
7016.00	71.290	86.710	6803.68	466.18	511.92	434.31	40.5067738	-104.5836773	9.47	
7111.00	78.120	89.930	6828.73	557.69	514.57	525.84	40.5067784	-104.5833481	7.90	
7205.00	86.240	89.920	6841.51	650.56	514.69	618.88	40.5067761	-104.5830135	8.64	
7220.82†	86.829	89.853	6842.47	666.32	514.72	634.67	40.5067758	-104.5829567	3.75	Cross 200' Hardline (360'FNL & 200'FWL,SEC.08)
7223.00†	86.911	89.844	6842.59	668.49	514.72	636.85	40.5067757	-104.5829489	3.75	Shallowest MD for Perf
7300.00	89.780	89.520	6844.81	745.32	515.15	713.81	40.5067747	-104.5826721	3.75	
7395.00	90.060	88.620	6844.94	840.21	516.69	808.80	40.5067762	-104.5823305	0.99	
7490.00	89.880	88.650	6844.99	935.13	518.96	903.77	40.5067797	-104.5819889	0.19	
7584.00	89.850	88.640	6845.21	1029.05	521.18	997.74	40.5067832	-104.5816509	0.03	
7679.00	89.880	88.560	6845.44	1123.98	523.50	1092.71	40.5067868	-104.5813093	0.09	
7774.00	90.030	88.450	6845.51	1218.91	525.98	1187.68	40.5067909	-104.5809677	0.20	
7869.00	90.340	88.690	6845.21	1313.84	528.35	1282.65	40.5067948	-104.5806261	0.41	
7964.00	90.430	88.710	6844.57	1408.75	530.51	1377.62	40.5067980	-104.5802846	0.10	
8058.00	90.180	88.720	6844.07	1502.67	532.61	1471.60	40.5068011	-104.5799465	0.27	
8153.00	90.000	88.580	6843.92	1597.59	534.85	1566.57	40.5068045	-104.5796050	0.24	
8248.00	90.190	88.610	6843.76	1692.52	537.18	1661.54	40.5068082	-104.5792634	0.20	

REFERENCE WELLPATH IDENTIFICATION			
Operator	NOBLE ENERGY, INC	Well	BISHOP A08-685
Field	WELD COUNTY (NOBLE NAD 83 GRID)	API/Legal	05-123-52075
Facility	SEC.07-T06N-R64W	Wellbore	BISHOP A08-685 AWB
Slot	SLOT#01 BISHOP A08-685 (860'FNL & 439'FEL,SEC.07)		

WELLPATH DATA (175 stations)

MD [ft]	Inclination [°]	Azimuth [°]	TVD [ft]	Vert Sect [ft]	North [ft]	East [ft]	Latitude	Longitude	DLS [°/100ft]	Comments
8343.00	89.980	88.570	6843.62	1787.45	539.52	1756.52	40.5068119	-104.5789218	0.23	
8437.00	90.100	88.520	6843.55	1881.37	541.91	1850.49	40.5068158	-104.5785838	0.14	
8532.00	89.980	88.490	6843.49	1976.31	544.38	1945.45	40.5068199	-104.5782422	0.13	
8627.00	90.960	88.760	6842.71	2071.23	546.66	2040.42	40.5068234	-104.5779006	1.07	
8722.00	90.780	88.700	6841.27	2166.13	548.77	2135.39	40.5068265	-104.5775591	0.20	
8817.00	90.500	88.780	6840.20	2261.04	550.86	2230.36	40.5068295	-104.5772175	0.31	
8911.00	90.410	88.670	6839.46	2354.96	552.95	2324.33	40.5068326	-104.5768795	0.15	
9006.00	90.440	88.700	6838.75	2449.87	555.13	2419.30	40.5068358	-104.5765379	0.04	
9101.00	90.410	88.590	6838.05	2544.79	557.38	2514.27	40.5068393	-104.5761963	0.12	
9196.00	90.280	88.740	6837.48	2639.71	559.59	2609.25	40.5068426	-104.5758547	0.21	
9290.00	90.310	88.740	6836.99	2733.63	561.66	2703.22	40.5068456	-104.5755167	0.03	
9385.00	90.350	88.740	6836.45	2828.54	563.74	2798.20	40.5068486	-104.5751751	0.04	
9480.00	90.190	88.690	6836.00	2923.46	565.88	2893.17	40.5068518	-104.5748335	0.18	
9574.00	90.070	88.750	6835.78	3017.38	567.98	2987.15	40.5068548	-104.5744955	0.14	
9669.00	90.160	88.760	6835.59	3112.29	570.04	3082.13	40.5068578	-104.5741539	0.10	
9764.00	90.100	88.750	6835.38	3207.21	572.10	3177.10	40.5068607	-104.5738123	0.06	
9858.00	90.160	88.780	6835.16	3301.12	574.13	3271.08	40.5068636	-104.5734743	0.07	
9953.00	90.190	88.670	6834.87	3396.04	576.24	3366.06	40.5068667	-104.5731327	0.12	
10048.00	90.250	88.790	6834.51	3490.95	578.35	3461.03	40.5068697	-104.5727911	0.14	
10143.00	90.530	88.800	6833.86	3585.86	580.35	3556.01	40.5068725	-104.5724495	0.29	
10237.00	89.540	88.610	6833.81	3679.78	582.47	3649.99	40.5068756	-104.5721115	1.07	
10427.00	89.600	88.450	6835.23	3869.64	587.34	3839.92	40.5068835	-104.5714283	0.09	
10522.00	90.800	88.710	6834.90	3964.56	589.70	3934.89	40.5068873	-104.5710867	1.29	
10616.00	90.520	88.420	6833.82	4058.48	592.05	4028.85	40.5068910	-104.5707488	0.43	
10711.00	90.490	88.620	6832.98	4153.41	594.51	4123.81	40.5068950	-104.5704072	0.21	
10806.00	90.370	88.710	6832.27	4248.33	596.72	4218.79	40.5068984	-104.5700656	0.16	
10901.00	90.340	88.640	6831.68	4343.25	598.92	4313.76	40.5069017	-104.5697240	0.08	
10995.00	90.370	88.740	6831.10	4437.17	601.07	4407.73	40.5069049	-104.5693860	0.11	
11090.00	90.370	88.660	6830.48	4532.08	603.22	4502.71	40.5069080	-104.5690444	0.08	
11185.00	89.410	89.540	6830.66	4626.97	604.71	4597.69	40.5069094	-104.5687028	1.37	
11279.00	89.600	89.480	6831.48	4720.82	605.52	4691.69	40.5069089	-104.5683648	0.21	
11374.00	89.660	89.440	6832.09	4815.68	606.41	4786.68	40.5069086	-104.5680232	0.08	
11564.00	89.570	89.660	6833.37	5005.37	607.90	4976.67	40.5069072	-104.5673399	0.13	
11658.00	89.570	89.740	6834.07	5099.21	608.40	5070.66	40.5069059	-104.5670019	0.09	
11753.00	90.220	90.790	6834.25	5193.98	607.96	5165.66	40.5069019	-104.5666603	1.30	
11848.00	90.460	91.670	6833.68	5288.63	605.92	5260.64	40.5068936	-104.5663189	0.96	
11942.00	90.310	90.110	6833.05	5382.33	604.46	5354.62	40.5068868	-104.5659810	1.67	
12132.00	90.370	89.620	6831.92	5571.96	604.91	5544.62	40.5068826	-104.5652978	0.26	
12227.00	89.750	90.580	6831.82	5666.76	604.74	5639.61	40.5068794	-104.5649562	1.20	
12321.00	90.340	89.780	6831.75	5760.54	604.44	5733.61	40.5068758	-104.5646182	1.06	
12416.00	90.280	89.690	6831.24	5855.37	604.88	5828.61	40.5068743	-104.5642766	0.11	
12511.00	90.150	89.810	6830.88	5950.20	605.30	5923.61	40.5068727	-104.5639349	0.19	
12606.00	90.220	89.820	6830.57	6045.03	605.61	6018.61	40.5068708	-104.5635933	0.07	
12701.00	90.120	89.800	6830.29	6139.85	605.92	6113.61	40.5068689	-104.5632517	0.11	
12796.00	89.910	89.730	6830.27	6234.68	606.31	6208.61	40.5068672	-104.5629101	0.23	

REFERENCE WELLPATH IDENTIFICATION			
Operator	NOBLE ENERGY, INC	Well	BISHOP A08-685
Field	WELD COUNTY (NOBLE NAD 83 GRID)	API/Legal	05-123-52075
Facility	SEC.07-T06N-R64W	Wellbore	BISHOP A08-685 AWB
Slot	SLOT#01 BISHOP A08-685 (860'FNL & 439'FEL,SEC.07)		

WELLPATH DATA (175 stations) † = interpolated, ‡ = extrapolated station										
MD [ft]	Inclination [°]	Azimuth [°]	TVD [ft]	Vert Sect [ft]	North [ft]	East [ft]	Latitude	Longitude	DLS ["/100ft]	Comments
12891.00	89.850	89.710	6830.47	6329.52	606.77	6303.60	40.5068657	-104.5625685	0.07	
12985.00	89.420	88.950	6831.06	6423.38	607.87	6397.60	40.5068660	-104.5622305	0.93	
13080.00	89.660	88.370	6831.83	6518.30	610.09	6492.57	40.5068693	-104.5618889	0.66	
13175.00	89.780	89.540	6832.29	6613.20	611.83	6587.55	40.5068713	-104.5615473	1.24	
13270.00	90.000	89.900	6832.47	6708.03	612.29	6682.55	40.5068699	-104.5612056	0.44	
13365.00	90.620	90.650	6831.96	6802.81	611.84	6777.54	40.5068658	-104.5608641	1.02	
13460.00	90.520	90.940	6831.01	6897.51	610.52	6872.53	40.5068595	-104.5605226	0.32	
13555.00	90.120	89.530	6830.48	6992.29	610.13	6967.52	40.5068556	-104.5601810	1.54	
13650.00	90.120	89.130	6830.28	7087.16	611.24	7062.52	40.5068559	-104.5598394	0.42	
13745.00	89.910	89.960	6830.26	7182.01	611.99	7157.51	40.5068552	-104.5594977	0.90	
13840.00	90.120	88.860	6830.24	7276.87	612.97	7252.51	40.5068551	-104.5591561	1.18	
13934.00	89.850	88.790	6830.26	7370.78	614.90	7346.49	40.5068577	-104.5588181	0.30	
14029.00	90.000	88.760	6830.38	7465.69	616.93	7441.46	40.5068605	-104.5584765	0.16	
14124.00	90.090	88.860	6830.31	7560.60	618.90	7536.44	40.5068631	-104.5581349	0.14	
14219.00	90.120	89.200	6830.14	7655.50	620.51	7631.43	40.5068648	-104.5577933	0.36	
14313.00	90.120	89.340	6829.94	7749.37	621.71	7725.42	40.5068653	-104.5574552	0.15	
14408.00	89.850	88.630	6829.96	7844.27	623.39	7820.41	40.5068672	-104.5571136	0.80	
14502.00	90.180	89.520	6829.94	7938.16	624.91	7914.39	40.5068686	-104.5567756	1.01	
14597.00	90.280	88.980	6829.56	8033.04	626.15	8009.38	40.5068692	-104.5564340	0.58	
14691.00	90.310	89.160	6829.07	8126.93	627.68	8103.37	40.5068707	-104.5560960	0.19	
14786.00	90.490	90.420	6828.41	8221.75	628.03	8198.37	40.5068689	-104.5557544	1.34	
14880.00	90.800	89.450	6827.35	8315.56	628.13	8292.36	40.5068664	-104.5554164	1.08	
15069.00	90.280	88.990	6825.57	8504.31	630.71	8481.33	40.5068679	-104.5547367	0.37	
15163.00	90.310	89.720	6825.09	8598.18	631.76	8575.32	40.5068681	-104.5543987	0.78	
15352.00	90.460	89.930	6823.82	8786.82	632.34	8764.32	40.5068642	-104.5537191	0.14	
15447.00	90.620	89.970	6822.92	8881.63	632.42	8859.31	40.5068616	-104.5533775	0.17	
15541.00	90.830	89.220	6821.73	8975.47	633.09	8953.30	40.5068607	-104.5530395	0.83	
15635.00	89.600	87.330	6821.38	9069.40	635.92	9047.25	40.5068657	-104.5527016	2.40	
15824.00	90.460	87.730	6821.28	9258.36	644.06	9236.08	40.5068825	-104.5520223	0.50	
15919.00	89.380	87.020	6821.41	9353.34	648.41	9330.97	40.5068916	-104.5516809	1.36	
16013.00	89.540	88.370	6822.30	9447.31	652.19	9424.89	40.5068993	-104.5513430	1.45	
16201.00	89.510	88.440	6823.86	9635.18	657.43	9612.81	40.5069081	-104.5506671	0.04	
16390.00	89.630	88.630	6825.28	9824.04	662.26	9801.75	40.5069158	-104.5499875	0.12	
16579.00	89.750	88.580	6826.30	10012.88	666.86	9990.69	40.5069229	-104.5493079	0.07	
16673.00	89.350	88.400	6827.04	10106.81	669.34	10084.65	40.5069269	-104.5489699	0.47	
16768.00	90.620	88.420	6827.06	10201.75	671.97	10179.61	40.5069314	-104.5486284	1.34	
16957.00	90.490	88.130	6825.23	10390.63	677.66	10368.52	40.5069414	-104.5479489	0.17	
17051.00	90.310	88.080	6824.57	10484.58	680.77	10462.46	40.5069472	-104.5476109	0.20	
17334.00	90.430	88.360	6822.75	10767.42	689.56	10745.32	40.5069630	-104.5465935	0.11	Last BH MWD Survey
17419.00†	90.430	88.360	6822.11	10852.37	691.99	10830.28	40.5069671	-104.5462879	0.00	Projection to Bit (353'FNL & 202'FEL,SEC.09)

REFERENCE WELLPATH IDENTIFICATION			
Operator	NOBLE ENERGY, INC	Well	BISHOP A08-685
Field	WELD COUNTY (NOBLE NAD 83 GRID)	API/Legal	05-123-52075
Facility	SEC.07-T06N-R64W	Wellbore	BISHOP A08-685 AWB
Slot	SLOT#01 BISHOP A08-685 (860'FNL & 439'FEL,SEC.07)		

TARGETS								
Name	TVD [ft]	North [ft]	East [ft]	Grid East [US ft]	Grid North [US ft]	Latitude	Longitude	Shape
OGDP 1 SEC.07-T06N-R64W	-2.00	-0.20	16.13	3254380.72	1428262.61	40.5053800	-104.5852000	polygon
	2D Polygon: dimensions not calculated							
OGDP 1 SEC.08-T06N-R64W	-2.00	-0.20	16.13	3254380.72	1428262.61	40.5053800	-104.5852000	polygon
	2D Polygon: dimensions not calculated							
OGDP 1 SEC.09-T06N-R64W	-2.00	-0.20	16.13	3254380.72	1428262.61	40.5053800	-104.5852000	polygon
	2D Polygon: dimensions not calculated							
OGDP 1 SEC.16-T06N-R64W	-2.00	-0.20	16.13	3254380.72	1428262.61	40.5053800	-104.5852000	polygon
	2D Polygon: dimensions not calculated							
OGDP 1 SEC.17-T06N-R64W	-2.00	-0.20	16.13	3254380.72	1428262.61	40.5053800	-104.5852000	polygon
	2D Polygon: dimensions not calculated							
OGDP 1 SEC.18-T06N-R64W	-2.00	-0.20	16.13	3254380.72	1428262.61	40.5053800	-104.5852000	polygon
	2D Polygon: dimensions not calculated							
BISHOP A08-685 BHL Rev-1 (350'FSL & 200'FEL,SEC.09)	6813.00	694.71	10832.02	3265196.22	1428957.50	40.5069745	-104.5462815	point
BISHOP A08-685 LP Rev-1 (350'FNL & 200'FWL,SEC.08)	6813.00	524.93	634.67	3254999.23	1428787.72	40.5068038	-104.5829563	point
BISHOP A08-685 BHL Rev-2 (350'FNL & 200'FEL,SEC.09)	6818.00	694.71	10832.02	3265196.22	1428957.50	40.5069745	-104.5462815	point
BISHOP A08-685 LP Rev-2 (350'FNL & 200'FWL,SEC.08)	6843.00	524.93	634.67	3254999.23	1428787.72	40.5068038	-104.5829563	point
BISHOP A08-685 REV-2 T1 2800'VS	6843.00	560.48	2769.90	3257134.39	1428823.27	40.5068405	-104.5752770	point
BISHOP A08-685 T1 2800'VS	6843.00	560.75	2786.22	3257150.71	1428823.54	40.5068408	-104.5752183	point
DP 134 Hardlines (300'FNL/FSL & 200'FEL/FWL)	6999.00	0.00	0.00	3254364.58	1428262.81	40.5053810	-104.5852580	polygon
	2D Polygon: dimensions not calculated							

REFERENCE WELLPATH IDENTIFICATION			
Operator	NOBLE ENERGY, INC	Well	BISHOP A08-685
Field	WELD COUNTY (NOBLE NAD 83 GRID)	API/Legal	05-123-52075
Facility	SEC.07-T06N-R64W	Wellbore	BISHOP A08-685 AWB
Slot	SLOT#01 BISHOP A08-685 (860'FNL & 439'FEL,SEC.07)		

WELLPATH COMPOSITION - Ref Wellbore: BISHOP A08-685 AWB Ref Wellpath: BISHOP A08-685 AWP					
Start MD [ft]	End MD [ft]	Positional Uncertainty Model	Log Name/Comment	Wellbore	Survey Date
29.00	2003.00	OWSG MWD rev2 (MS+IFR1)	13.5" EVO Surface OWSG MWD rev2 (MS + IFR1) <130'-2003'>	BISHOP A08-685 AWB	1/1/2024
2003.00	17419.00	OWSG MWD rev2 (MS+IFR1)	8.5" ATC Lucida OWSG MWD rev2 (MS+IFR1) <2089'-17334'>	BISHOP A08-685 AWB	1/22/2024

REFERENCE WELLPATH IDENTIFICATION			
Operator	NOBLE ENERGY, INC	Well	BISHOP A08-685
Field	WELD COUNTY (NOBLE NAD 83 GRID)	API/Legal	05-123-52075
Facility	SEC.07-T06N-R64W	Wellbore	BISHOP A08-685 AWB
Slot	SLOT#01 BISHOP A08-685 (860'FNL & 439'FEL,SEC.07)		

WELLPATH COMMENTS				
MD [ft]	Inclination [°]	Azimuth [°]	TVD [ft]	Comment
130.00	0.040	292.970	130.00	First BH MWD Survey
7220.82	86.829	89.853	6842.47	Cross 200' Hardline (360'FNL & 200'FWL,SEC.08)
7223.00	86.911	89.844	6842.59	Shallowest MD for Perf
17334.00	90.430	88.360	6822.75	Last BH MWD Survey
17419.00	90.430	88.360	6822.11	Projection to Bit (353'FNL & 202'FEL,SEC.09)