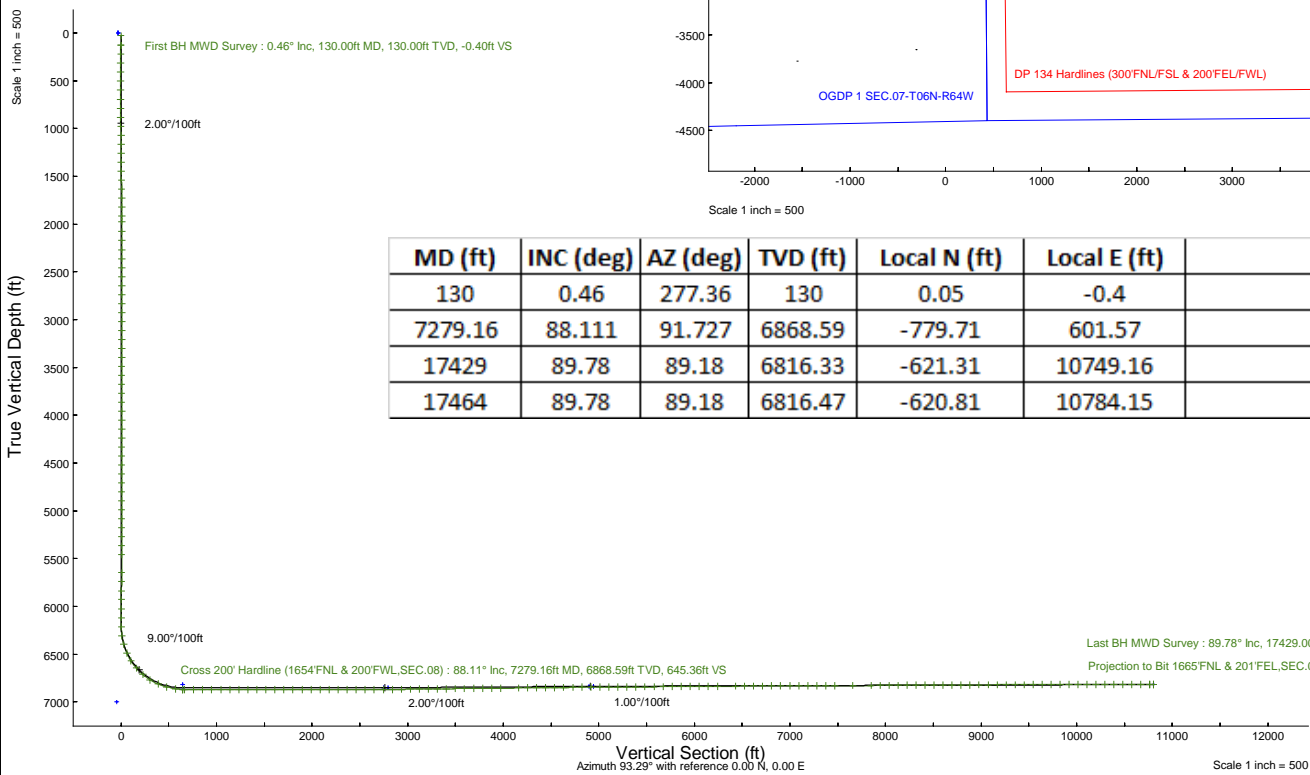
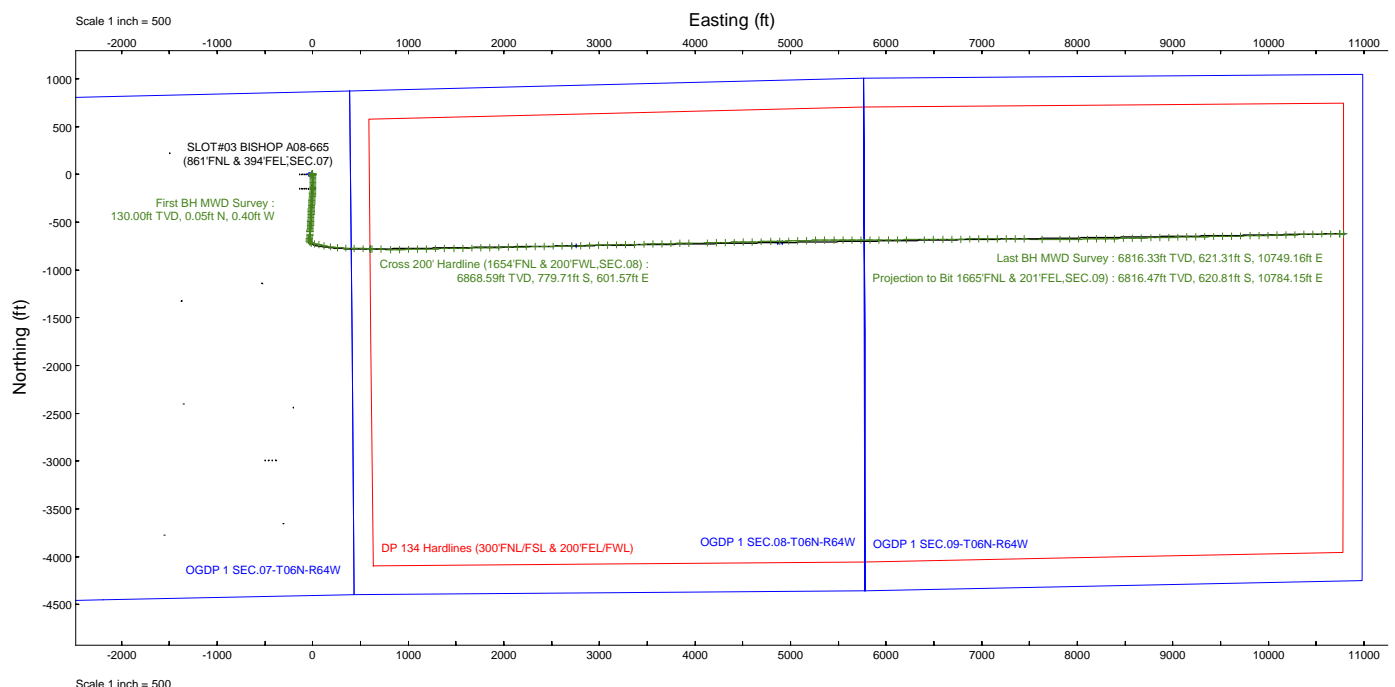


# NOBLE ENERGY, INC

Location: COLORADO Slot: SLOT#03 BISHOP A08-665 (861'FNL & 394'FEL,SEC.07)  
 Field: WELD COUNTY (NOBLE NAD 83 GRID) Well: BISHOP A08-665  
 Facility: SEC.07-T06N-R64W Wellbore: BISHOP A08-665 PWB

Plot reference wellpath is BISHOP A08-665 (REV-D.0) PWP  
 True vertical depths are referenced to RIG (4742'GL+29'KB@4771'RKB) (RKB)  
 Reference wellpath measured depths are referenced to RIG (4742'GL+29'KB@4771'RKB) (RKB)  
 RIG (4742'GL+29'KB@4771'RKB) (RKB) to Mean Sea Level: 4771 feet  
 Mean Sea Level to Ground level (At Slot: SLOT#03 BISHOP A08-665 (861'FNL & 394'FEL,SEC.07)): 0 feet  
 Offsets wellpath MDs are referenced to each path's default MD datum

| Location Information  |              |                   |                    |                    |                 |
|---|--------------|-------------------|--------------------|--------------------|-----------------|
| Facility Name   |              | Grid East (US It) | Grid North (US It) | Latitude           | Longitude       |
| SEC.07-T06N-R64W  |              | 3254380.716       | 1428262.611        | 40°30'19.3680"N    | 104°35'6.7200"W |
| Slot  | Local N (ft) | Local E (ft)      | Grid East (US It)  | Grid North (US It) | Latitude        |
| SLOT#03 BISHOP A08-665 (861'FNL & 394'FEL,SEC.07)   | 0.30         | 28.92             | 3254409.635        | 1428262.910        | 40°30'19.3680"N |
| RIG (4742'GL+29'KB@4771'RKB) (RKB) to Ground level (At Slot: SLOT#03 BISHOP A08-665 (861'FNL & 394'FEL,SEC.07)) |              |                   |                    |                    | 4771ft          |
| Mean Sea Level to Ground level (At Slot: SLOT#03 BISHOP A08-665 (861'FNL & 394'FEL,SEC.07))                     |              |                   |                    |                    | 0ft             |
| RIG (4742'GL+29'KB@4771'RKB) (RKB) to Mean Sea Level  |              |                   |                    |                    | 4771ft          |



| MD (ft) | INC (deg) | AZ (deg) | TVD (ft) | Local N (ft) | Local E (ft) | Comment   |
|---------|-----------|----------|----------|--------------|--------------|---|
| 130     | 0.46      | 277.36   | 130      | 0.05         | -0.4         | First BH MWD Survey                             |
| 7279.16 | 88.111    | 91.727   | 6868.59  | -779.71      | 601.57       | Cross 200' Hardline (1654'FNL & 200'FWL,SEC.08) |
| 17429   | 89.78     | 89.18    | 6816.33  | -621.31      | 10749.16     | Last BH MWD Survey                              |
| 17464   | 89.78     | 89.18    | 6816.47  | -620.81      | 10784.15     | Projection to Bit 1665'FNL & 201'FEL,SEC.09)    |



# Actual Wellpath Report

BISHOP A08-665 AWP

Page 1 of 9



## REFERENCE WELLPATH IDENTIFICATION

|          |   |           |                    |
|----------|---|-----------|--------------------|
| Operator | NOBLE ENERGY, INC                                 | Well      | BISHOP A08-665     |
| Field    | WELD COUNTY (NOBLE NAD 83 GRID)                   | API/Legal | 05-123-52077       |
| Facility | SEC.07-T06N-R64W                                  | Wellbore  | BISHOP A08-665 AWB |
| Slot     | SLOT#03 BISHOP A08-665 (861'FNL & 394'FEL,SEC.07) |           |                    |

## REPORT SETUP INFORMATION

|                     |   |                  |                        |
|---------------------|---|------------------|------------------------|
| Projection System   | NAD83 / Lambert Colorado SP, Northern Zone (501), US feet | Software System  | WellArchitect® 6.0     |
| North Reference     | Grid  | User             | Martsam01              |
| Scale               | 0.999967  | Report Generated | 3/4/2024 at 5:44:19 PM |
| Convergence at slot | 0.59° East  | Database         | WA_Denver              |

## WELLPATH LOCATION

|                       | Local coordinates |          | Grid coordinates |                 | Geographic coordinates |               |
|-----------------------|-------------------|----------|------------------|-----------------|------------------------|---------------|
|                       | North[ft]         | East[ft] | Easting[US ft]   | Northing[US ft] | Latitude               | Longitude     |
| Slot Location         | 0.30              | 28.92    | 3254409.64       | 1428262.91      | 40.5053800°            | -104.5850960° |
| Facility Reference Pt |                   |          | 3254380.72       | 1428262.61      | 40.5053800°            | -104.5852000° |
| Field Reference Pt    |                   |          | 3000000.00       | 4454105.15      | 48.7761986°            | -105.5000000° |

## WELLPATH DATUM

|                          |                                    |  |                   |
|--------------------------|------------------------------------|--|-------------------|
| Calculation method       | Minimum curvature                  | RIG (4742'GL+29'KB@4771'RKB) (RKB) to Facility Vertical Datum  | 4771.00ft         |
| Horizontal Reference Pt  | Slot                               | RIG (4742'GL+29'KB@4771'RKB) (RKB) to Mean Sea Level   | 4771.00ft         |
| Vertical Reference Pt    | RIG (4742'GL+29'KB@4771'RKB) (RKB) | RIG (4742'GL+29'KB@4771'RKB) (RKB) to Ground Level at Slot (SLOT#03 BISHOP A08-665 (861'FNL & 394'FEL,SEC.07)) | 4771.00ft         |
| MD Reference Pt          | RIG (4742'GL+29'KB@4771'RKB) (RKB) | Section Origin   | N 0.00, E 0.00 ft |
| Field Vertical Reference | Mean Sea Level                     | Section Azimuth  | 93.29°            |

| REFERENCE WELLPATH IDENTIFICATION |   |           |                    |
|-----------------------------------|---|-----------|--------------------|
| Operator                          | NOBLE ENERGY, INC                                 | Well      | BISHOP A08-665     |
| Field                             | WELD COUNTY (NOBLE NAD 83 GRID)                   | API/Legal | 05-123-52077       |
| Facility                          | SEC.07-T06N-R64W                                  | Wellbore  | BISHOP A08-665 AWB |
| Slot                              | SLOT#03 BISHOP A08-665 (861'FNL & 394'FEL,SEC.07) |           |                    |

**WELLPATH DATA (184 stations)** † = interpolated, ‡ = extrapolated station

| MD [ft] | Inclination [°] | Azimuth [°] | TVD [ft] | Vert Sect [ft] | North [ft] | East [ft] | Latitude   | Longitude    | DLS [°/100ft] | Comments            |
|---------|-----------------|-------------|----------|----------------|------------|-----------|------------|--------------|---------------|---------------------|
| 0.00†   | 0.000           | 277.360     | 0.00     | 0.00           | 0.00       | 0.00      | 40.5053800 | -104.5850960 | 0.00          |                     |
| 29.00   | 0.000           | 277.360     | 29.00    | 0.00           | 0.00       | 0.00      | 40.5053800 | -104.5850960 | 0.00          |                     |
| 130.00  | 0.460           | 277.360     | 130.00   | -0.40          | 0.05       | -0.40     | 40.5053802 | -104.5850974 | 0.46          | First BH MWD Survey |
| 221.00  | 0.880           | 301.000     | 220.99   | -1.39          | 0.46       | -1.36     | 40.5053813 | -104.5851009 | 0.54          |                     |
| 314.00  | 1.020           | 302.070     | 313.98   | -2.75          | 1.27       | -2.68     | 40.5053836 | -104.5851056 | 0.15          |                     |
| 409.00  | 0.500           | 282.500     | 408.97   | -3.90          | 1.80       | -3.80     | 40.5053851 | -104.5851096 | 0.60          |                     |
| 504.00  | 0.640           | 296.260     | 503.97   | -4.79          | 2.13       | -4.68     | 40.5053860 | -104.5851127 | 0.21          |                     |
| 598.00  | 0.730           | 298.850     | 597.96   | -5.82          | 2.65       | -5.67     | 40.5053874 | -104.5851163 | 0.10          |                     |
| 693.00  | 0.680           | 137.740     | 692.96   | -5.96          | 2.53       | -5.82     | 40.5053871 | -104.5851169 | 1.46          |                     |
| 788.00  | 1.830           | 151.220     | 787.93   | -4.75          | 0.78       | -4.72     | 40.5053823 | -104.5851129 | 1.24          |                     |
| 882.00  | 3.450           | 159.730     | 881.83   | -2.82          | -3.19      | -3.01     | 40.5053713 | -104.5851070 | 1.77          |                     |
| 977.00  | 4.610           | 169.670     | 976.60   | -0.78          | -9.63      | -1.34     | 40.5053536 | -104.5851012 | 1.42          |                     |
| 1072.00 | 6.010           | 174.230     | 1071.19  | 0.90           | -18.33     | -0.15     | 40.5053297 | -104.5850972 | 1.54          |                     |
| 1167.00 | 7.160           | 177.230     | 1165.56  | 2.31           | -29.19     | 0.63      | 40.5052999 | -104.5850948 | 1.26          |                     |
| 1261.00 | 7.950           | 179.040     | 1258.74  | 3.41           | -41.55     | 1.02      | 40.5052659 | -104.5850939 | 0.88          |                     |
| 1356.00 | 8.570           | 180.820     | 1352.76  | 4.20           | -55.19     | 1.03      | 40.5052285 | -104.5850943 | 0.71          |                     |
| 1451.00 | 7.980           | 178.700     | 1446.77  | 5.04           | -68.86     | 1.08      | 40.5051910 | -104.5850947 | 0.70          |                     |
| 1546.00 | 8.290           | 178.750     | 1540.81  | 6.11           | -82.30     | 1.38      | 40.5051541 | -104.5850941 | 0.33          |                     |
| 1640.00 | 8.490           | 178.420     | 1633.80  | 7.23           | -96.01     | 1.72      | 40.5051164 | -104.5850934 | 0.22          |                     |
| 1735.00 | 8.100           | 178.160     | 1727.81  | 8.43           | -109.71    | 2.13      | 40.5050788 | -104.5850924 | 0.41          |                     |
| 1830.00 | 7.850           | 179.470     | 1821.89  | 9.46           | -122.89    | 2.40      | 40.5050426 | -104.5850919 | 0.33          |                     |
| 1925.00 | 7.830           | 180.030     | 1916.00  | 10.26          | -135.85    | 2.46      | 40.5050071 | -104.5850922 | 0.08          |                     |
| 1982.00 | 7.540           | 179.510     | 1972.49  | 10.73          | -143.47    | 2.49      | 40.5049861 | -104.5850924 | 0.52          |                     |
| 2089.00 | 7.880           | 183.270     | 2078.52  | 11.19          | -157.81    | 2.13      | 40.5049468 | -104.5850942 | 0.57          |                     |
| 2184.00 | 8.000           | 184.960     | 2172.61  | 11.00          | -170.90    | 1.19      | 40.5049109 | -104.5850981 | 0.28          |                     |
| 2279.00 | 7.810           | 184.010     | 2266.71  | 10.73          | -183.93    | 0.17      | 40.5048752 | -104.5851022 | 0.24          |                     |
| 2374.00 | 7.780           | 185.360     | 2360.83  | 10.42          | -196.77    | -0.89     | 40.5048400 | -104.5851065 | 0.20          |                     |
| 2468.00 | 7.660           | 184.680     | 2453.98  | 10.04          | -209.35    | -1.99     | 40.5048055 | -104.5851109 | 0.16          |                     |
| 2563.00 | 7.890           | 186.490     | 2548.11  | 9.52           | -222.13    | -3.25     | 40.5047704 | -104.5851159 | 0.35          |                     |
| 2658.00 | 7.730           | 185.520     | 2642.23  | 8.91           | -234.97    | -4.60     | 40.5047352 | -104.5851212 | 0.22          |                     |
| 2753.00 | 7.550           | 184.750     | 2736.38  | 8.50           | -247.55    | -5.73     | 40.5047007 | -104.5851258 | 0.22          |                     |
| 2847.00 | 7.370           | 184.480     | 2829.59  | 8.22           | -259.72    | -6.71     | 40.5046673 | -104.5851298 | 0.20          |                     |
| 2942.00 | 7.840           | 182.960     | 2923.75  | 8.13           | -272.26    | -7.52     | 40.5046329 | -104.5851331 | 0.54          |                     |
| 3037.00 | 7.690           | 185.630     | 3017.88  | 7.91           | -285.06    | -8.48     | 40.5045978 | -104.5851371 | 0.41          |                     |
| 3131.00 | 7.570           | 182.170     | 3111.05  | 7.77           | -297.50    | -9.33     | 40.5045637 | -104.5851406 | 0.51          |                     |
| 3226.00 | 8.130           | 183.970     | 3205.16  | 7.82           | -310.46    | -10.03    | 40.5045282 | -104.5851436 | 0.64          |                     |
| 3321.00 | 7.590           | 184.270     | 3299.27  | 7.63           | -323.42    | -10.97    | 40.5044926 | -104.5851474 | 0.57          |                     |
| 3415.00 | 7.290           | 184.130     | 3392.47  | 7.44           | -335.56    | -11.86    | 40.5044593 | -104.5851511 | 0.32          |                     |
| 3510.00 | 7.410           | 184.270     | 3486.69  | 7.24           | -347.68    | -12.75    | 40.5044261 | -104.5851547 | 0.13          |                     |
| 3605.00 | 7.260           | 183.510     | 3580.92  | 7.12           | -359.78    | -13.57    | 40.5043929 | -104.5851581 | 0.19          |                     |
| 3700.00 | 6.720           | 182.380     | 3675.21  | 7.18           | -371.32    | -14.17    | 40.5043612 | -104.5851607 | 0.59          |                     |
| 3794.00 | 7.820           | 183.490     | 3768.45  | 7.25           | -383.20    | -14.79    | 40.5043286 | -104.5851634 | 1.18          |                     |
| 3889.00 | 7.800           | 182.780     | 3862.57  | 7.28           | -396.09    | -15.49    | 40.5042933 | -104.5851664 | 0.10          |                     |
| 3984.00 | 7.440           | 183.230     | 3956.73  | 7.35           | -408.67    | -16.15    | 40.5042588 | -104.5851692 | 0.38          |                     |
| 4078.00 | 7.650           | 183.480     | 4049.92  | 7.33           | -420.99    | -16.87    | 40.5042250 | -104.5851723 | 0.23          |                     |

| REFERENCE WELLPATH IDENTIFICATION |   |           |                    |
|-----------------------------------|---|-----------|--------------------|
| Operator                          | NOBLE ENERGY, INC                                 | Well      | BISHOP A08-665     |
| Field                             | WELD COUNTY (NOBLE NAD 83 GRID)                   | API/Legal | 05-123-52077       |
| Facility                          | SEC.07-T06N-R64W                                  | Wellbore  | BISHOP A08-665 AWB |
| Slot                              | SLOT#03 BISHOP A08-665 (861'FNL & 394'FEL,SEC.07) |           |                    |

**WELLPATH DATA (184 stations)** † = interpolated, ‡ = extrapolated station

| MD [ft]  | Inclination [°] | Azimuth [°] | TVD [ft] | Vert Sect [ft] | North [ft] | East [ft] | Latitude   | Longitude    | DLS [°/100ft] | Comments  |
|----------|-----------------|-------------|----------|----------------|------------|-----------|------------|--------------|---------------|---|
| 4173.00  | 6.880           | 183.210     | 4144.16  | 7.32           | -432.98    | -17.58    | 40.5041921 | -104.5851753 | 0.81          |   |
| 4268.00  | 7.040           | 183.530     | 4238.46  | 7.31           | -444.48    | -18.25    | 40.5041606 | -104.5851781 | 0.17          |   |
| 4362.00  | 7.060           | 183.250     | 4331.74  | 7.29           | -455.99    | -18.94    | 40.5041290 | -104.5851810 | 0.04          |   |
| 4457.00  | 7.710           | 183.440     | 4425.96  | 7.27           | -468.18    | -19.65    | 40.5040955 | -104.5851840 | 0.68          |   |
| 4552.00  | 8.260           | 184.160     | 4520.03  | 7.15           | -481.35    | -20.53    | 40.5040594 | -104.5851877 | 0.59          |   |
| 4647.00  | 7.760           | 183.510     | 4614.11  | 7.03           | -494.56    | -21.42    | 40.5040232 | -104.5851914 | 0.53          |   |
| 4742.00  | 7.530           | 183.110     | 4708.26  | 7.02           | -507.17    | -22.15    | 40.5039886 | -104.5851944 | 0.25          |   |
| 4836.00  | 6.890           | 184.100     | 4801.52  | 6.96           | -518.95    | -22.88    | 40.5039563 | -104.5851975 | 0.69          |   |
| 4931.00  | 7.100           | 183.630     | 4895.81  | 6.85           | -530.49    | -23.66    | 40.5039246 | -104.5852008 | 0.23          |   |
| 5026.00  | 7.650           | 182.750     | 4990.03  | 6.87           | -542.67    | -24.34    | 40.5038912 | -104.5852036 | 0.59          |   |
| 5121.00  | 6.740           | 184.420     | 5084.28  | 6.82           | -554.54    | -25.07    | 40.5038587 | -104.5852067 | 0.98          |   |
| 5215.00  | 7.440           | 184.430     | 5177.56  | 6.59           | -566.11    | -25.97    | 40.5038269 | -104.5852104 | 0.74          |   |
| 5310.00  | 7.570           | 183.850     | 5271.74  | 6.41           | -578.49    | -26.86    | 40.5037930 | -104.5852140 | 0.16          |   |
| 5405.00  | 7.610           | 182.930     | 5365.91  | 6.39           | -591.01    | -27.60    | 40.5037586 | -104.5852172 | 0.13          |   |
| 5499.00  | 7.530           | 182.990     | 5459.09  | 6.46           | -603.38    | -28.24    | 40.5037247 | -104.5852199 | 0.09          |   |
| 5689.00  | 6.940           | 182.930     | 5647.58  | 6.60           | -627.27    | -29.48    | 40.5036592 | -104.5852253 | 0.31          |   |
| 5784.00  | 7.770           | 184.990     | 5741.80  | 6.45           | -639.40    | -30.33    | 40.5036259 | -104.5852288 | 0.92          |   |
| 5879.00  | 7.610           | 184.570     | 5835.94  | 6.12           | -652.07    | -31.39    | 40.5035911 | -104.5852331 | 0.18          |   |
| 5973.00  | 7.250           | 183.090     | 5929.15  | 6.00           | -664.20    | -32.21    | 40.5035579 | -104.5852364 | 0.43          |   |
| 6068.00  | 7.320           | 185.460     | 6023.39  | 5.79           | -676.21    | -33.10    | 40.5035249 | -104.5852401 | 0.32          |   |
| 6163.00  | 6.840           | 185.110     | 6117.66  | 5.38           | -687.87    | -34.18    | 40.5034930 | -104.5852444 | 0.51          |   |
| 6258.00  | 7.800           | 183.740     | 6211.89  | 5.15           | -699.94    | -35.11    | 40.5034599 | -104.5852482 | 1.03          |   |
| 6353.00  | 8.480           | 132.150     | 6306.05  | 10.56          | -711.08    | -30.33    | 40.5034291 | -104.5852314 | 7.46          |   |
| 6447.00  | 16.010          | 104.620     | 6397.91  | 28.71          | -719.02    | -12.61    | 40.5034068 | -104.5851680 | 9.93          |   |
| 6542.00  | 24.450          | 101.780     | 6486.97  | 61.06          | -726.36    | 19.37     | 40.5033858 | -104.5850533 | 8.94          |   |
| 6637.00  | 32.540          | 102.960     | 6570.40  | 105.77         | -736.12    | 63.59     | 40.5033578 | -104.5848947 | 8.54          |   |
| 6731.00  | 41.280          | 100.970     | 6645.49  | 161.53         | -747.71    | 118.78    | 40.5033244 | -104.5846966 | 9.38          |   |
| 6826.00  | 49.800          | 97.400      | 6711.98  | 228.91         | -758.37    | 185.66    | 40.5032932 | -104.5844566 | 9.36          |   |
| 6921.00  | 57.940          | 94.970      | 6767.95  | 305.47         | -766.54    | 261.87    | 40.5032686 | -104.5841828 | 8.81          |   |
| 7016.00  | 68.170          | 92.190      | 6810.95  | 390.03         | -771.73    | 346.28    | 40.5032520 | -104.5838795 | 11.08         |   |
| 7111.00  | 74.060          | 91.620      | 6841.68  | 479.85         | -774.71    | 436.07    | 40.5032413 | -104.5835568 | 6.23          |   |
| 7205.00  | 81.280          | 91.790      | 6861.74  | 571.59         | -777.44    | 527.80    | 40.5032312 | -104.5832270 | 7.68          |   |
| 7279.16† | 88.111          | 91.727      | 6868.59  | 645.36         | -779.71    | 601.57    | 40.5032229 | -104.5829619 | 9.21          | Cross 200' Hardline (1654'FNL & 200'FWL,SEC.08) |
| 7282.00† | 88.372          | 91.725      | 6868.68  | 648.20         | -779.79    | 604.41    | 40.5032226 | -104.5829517 | 9.21          | Shallowest MD for Perf                          |
| 7300.00  | 90.030          | 91.710      | 6868.93  | 666.19         | -780.33    | 622.40    | 40.5032206 | -104.5828870 | 9.21          |   |
| 7395.00  | 90.120          | 91.720      | 6868.81  | 761.15         | -783.17    | 717.35    | 40.5032101 | -104.5825457 | 0.10          |   |
| 7490.00  | 90.000          | 91.440      | 6868.71  | 856.11         | -785.79    | 812.32    | 40.5032002 | -104.5822043 | 0.32          |   |
| 7584.00  | 90.030          | 88.860      | 6868.68  | 949.96         | -786.04    | 906.31    | 40.5031968 | -104.5818664 | 2.74          |   |
| 7679.00  | 90.220          | 88.920      | 6868.48  | 1044.68        | -784.20    | 1001.29   | 40.5031992 | -104.5815248 | 0.21          |   |
| 7774.00  | 90.030          | 88.860      | 6868.27  | 1139.40        | -782.36    | 1096.27   | 40.5032015 | -104.5811832 | 0.21          |   |
| 7869.00  | 89.970          | 88.930      | 6868.27  | 1234.12        | -780.53    | 1191.25   | 40.5032039 | -104.5808416 | 0.10          |   |
| 7964.00  | 89.970          | 88.780      | 6868.32  | 1328.83        | -778.63    | 1286.24   | 40.5032064 | -104.5805000 | 0.16          |   |
| 8058.00  | 90.120          | 88.740      | 6868.24  | 1422.54        | -776.59    | 1380.21   | 40.5032093 | -104.5801620 | 0.17          |   |
| 8153.00  | 89.970          | 88.770      | 6868.17  | 1517.24        | -774.53    | 1475.19   | 40.5032122 | -104.5798204 | 0.16          |   |
| 8248.00  | 90.000          | 88.930      | 6868.20  | 1611.96        | -772.62    | 1570.17   | 40.5032148 | -104.5794788 | 0.17          |   |

| REFERENCE WELLPATH IDENTIFICATION |   |           |                    |
|-----------------------------------|---|-----------|--------------------|
| Operator                          | NOBLE ENERGY, INC                                 | Well      | BISHOP A08-665     |
| Field                             | WELD COUNTY (NOBLE NAD 83 GRID)                   | API/Legal | 05-123-52077       |
| Facility                          | SEC.07-T06N-R64W                                  | Wellbore  | BISHOP A08-665 AWB |
| Slot                              | SLOT#03 BISHOP A08-665 (861'FNL & 394'FEL,SEC.07) |           |                    |

### WELLPATH DATA (184 stations)

| MD [ft]  | Inclination [°] | Azimuth [°] | TVD [ft] | Vert Sect [ft] | North [ft] | East [ft] | Latitude   | Longitude    | DLS [°/100ft] | Comments |
|----------|-----------------|-------------|----------|----------------|------------|-----------|------------|--------------|---------------|----------|
| 8343.00  | 89.910          | 88.820      | 6868.27  | 1706.67        | -770.76    | 1665.15   | 40.5032172 | -104.5791372 | 0.15          |          |
| 8437.00  | 90.000          | 88.850      | 6868.34  | 1800.39        | -768.85    | 1759.13   | 40.5032198 | -104.5787992 | 0.10          |          |
| 8532.00  | 89.720          | 88.690      | 6868.58  | 1895.09        | -766.81    | 1854.11   | 40.5032226 | -104.5784576 | 0.34          |          |
| 8627.00  | 89.820          | 88.700      | 6868.96  | 1989.79        | -764.64    | 1949.09   | 40.5032259 | -104.5781161 | 0.11          |          |
| 8722.00  | 89.850          | 88.640      | 6869.23  | 2084.48        | -762.44    | 2044.06   | 40.5032292 | -104.5777745 | 0.07          |          |
| 8817.00  | 90.000          | 88.530      | 6869.35  | 2179.16        | -760.09    | 2139.03   | 40.5032329 | -104.5774329 | 0.20          |          |
| 8911.00  | 89.780          | 88.700      | 6869.54  | 2272.84        | -757.82    | 2233.00   | 40.5032365 | -104.5770949 | 0.30          |          |
| 9006.00  | 90.120          | 88.890      | 6869.62  | 2367.55        | -755.82    | 2327.98   | 40.5032393 | -104.5767533 | 0.41          |          |
| 9101.00  | 89.970          | 88.760      | 6869.54  | 2462.26        | -753.88    | 2422.96   | 40.5032419 | -104.5764118 | 0.21          |          |
| 9196.00  | 89.910          | 88.650      | 6869.64  | 2556.96        | -751.73    | 2517.94   | 40.5032451 | -104.5760702 | 0.13          |          |
| 9290.00  | 90.090          | 89.040      | 6869.64  | 2650.67        | -749.83    | 2611.92   | 40.5032476 | -104.5757322 | 0.46          |          |
| 9385.00  | 90.770          | 88.810      | 6868.93  | 2745.40        | -748.05    | 2706.90   | 40.5032498 | -104.5753906 | 0.76          |          |
| 9480.00  | 90.340          | 88.610      | 6868.01  | 2840.09        | -745.91    | 2801.87   | 40.5032529 | -104.5750490 | 0.50          |          |
| 9574.00  | 90.460          | 88.480      | 6867.35  | 2933.76        | -743.53    | 2895.84   | 40.5032568 | -104.5747111 | 0.19          |          |
| 9669.00  | 90.520          | 88.570      | 6866.54  | 3028.43        | -741.08    | 2990.80   | 40.5032608 | -104.5743695 | 0.11          |          |
| 9764.00  | 90.710          | 88.960      | 6865.52  | 3123.13        | -739.03    | 3085.77   | 40.5032637 | -104.5740279 | 0.46          |          |
| 9858.00  | 90.650          | 88.780      | 6864.41  | 3216.84        | -737.18    | 3179.75   | 40.5032660 | -104.5736900 | 0.20          |          |
| 9953.00  | 90.520          | 88.510      | 6863.44  | 3311.52        | -734.93    | 3274.72   | 40.5032695 | -104.5733484 | 0.32          |          |
| 10048.00 | 91.540          | 89.030      | 6861.73  | 3406.21        | -732.89    | 3369.68   | 40.5032724 | -104.5730069 | 1.21          |          |
| 10143.00 | 90.400          | 88.710      | 6860.12  | 3500.91        | -731.02    | 3464.65   | 40.5032748 | -104.5726653 | 1.25          |          |
| 10237.00 | 90.710          | 88.800      | 6859.21  | 3594.61        | -728.98    | 3558.62   | 40.5032777 | -104.5723274 | 0.34          |          |
| 10332.00 | 90.680          | 89.110      | 6858.06  | 3689.33        | -727.25    | 3653.60   | 40.5032797 | -104.5719858 | 0.33          |          |
| 10427.00 | 90.770          | 88.580      | 6856.86  | 3784.04        | -725.33    | 3748.57   | 40.5032822 | -104.5716442 | 0.57          |          |
| 10522.00 | 90.280          | 88.850      | 6855.98  | 3878.73        | -723.20    | 3843.54   | 40.5032854 | -104.5713026 | 0.59          |          |
| 10616.00 | 90.650          | 89.030      | 6855.22  | 3972.46        | -721.46    | 3937.52   | 40.5032874 | -104.5709647 | 0.44          |          |
| 10806.00 | 90.710          | 88.630      | 6852.97  | 4161.87        | -717.58    | 4127.47   | 40.5032926 | -104.5702815 | 0.21          |          |
| 10901.00 | 90.740          | 89.040      | 6851.76  | 4256.57        | -715.65    | 4222.44   | 40.5032952 | -104.5699400 | 0.43          |          |
| 10995.00 | 90.490          | 87.920      | 6850.76  | 4350.24        | -713.16    | 4316.40   | 40.5032993 | -104.5696020 | 1.22          |          |
| 11090.00 | 90.830          | 88.430      | 6849.66  | 4444.85        | -710.13    | 4411.34   | 40.5033049 | -104.5692605 | 0.65          |          |
| 11185.00 | 90.740          | 88.720      | 6848.36  | 4539.52        | -707.77    | 4506.31   | 40.5033086 | -104.5689190 | 0.32          |          |
| 11279.00 | 90.460          | 88.890      | 6847.38  | 4633.23        | -705.81    | 4600.28   | 40.5033113 | -104.5685810 | 0.35          |          |
| 11374.00 | 90.620          | 88.920      | 6846.48  | 4727.94        | -704.00    | 4695.26   | 40.5033135 | -104.5682394 | 0.17          |          |
| 11469.00 | 90.520          | 88.750      | 6845.54  | 4822.65        | -702.06    | 4790.23   | 40.5033161 | -104.5678978 | 0.21          |          |
| 11564.00 | 90.580          | 88.530      | 6844.62  | 4917.33        | -699.81    | 4885.20   | 40.5033196 | -104.5675563 | 0.24          |          |
| 11658.00 | 90.860          | 88.430      | 6843.44  | 5010.99        | -697.32    | 4979.16   | 40.5033237 | -104.5672183 | 0.32          |          |
| 11753.00 | 89.970          | 88.430      | 6842.75  | 5105.65        | -694.71    | 5074.12   | 40.5033281 | -104.5668768 | 0.94          |          |
| 11848.00 | 90.550          | 88.420      | 6842.32  | 5200.31        | -692.10    | 5169.09   | 40.5033325 | -104.5665352 | 0.61          |          |
| 11942.00 | 90.090          | 88.550      | 6841.80  | 5293.97        | -689.62    | 5263.05   | 40.5033366 | -104.5661973 | 0.51          |          |
| 12037.00 | 90.060          | 88.860      | 6841.67  | 5388.67        | -687.47    | 5358.03   | 40.5033398 | -104.5658557 | 0.33          |          |
| 12132.00 | 90.620          | 90.060      | 6841.11  | 5483.45        | -686.58    | 5453.02   | 40.5033395 | -104.5655141 | 1.39          |          |
| 12227.00 | 90.550          | 90.140      | 6840.14  | 5578.30        | -686.74    | 5548.01   | 40.5033363 | -104.5651725 | 0.11          |          |
| 12321.00 | 90.650          | 90.650      | 6839.16  | 5672.17        | -687.39    | 5642.01   | 40.5033318 | -104.5648346 | 0.55          |          |
| 12416.00 | 90.180          | 89.380      | 6838.47  | 5767.01        | -687.41    | 5737.00   | 40.5033290 | -104.5644930 | 1.43          |          |
| 12511.00 | 90.430          | 89.780      | 6837.96  | 5861.81        | -686.72    | 5832.00   | 40.5033281 | -104.5641514 | 0.50          |          |
| 12606.00 | 90.520          | 89.560      | 6837.17  | 5956.62        | -686.17    | 5926.99   | 40.5033269 | -104.5638098 | 0.25          |          |

| REFERENCE WELLPATH IDENTIFICATION |   |           |                    |
|-----------------------------------|---|-----------|--------------------|
| Operator                          | NOBLE ENERGY, INC                                 | Well      | BISHOP A08-665     |
| Field                             | WELD COUNTY (NOBLE NAD 83 GRID)                   | API/Legal | 05-123-52077       |
| Facility                          | SEC.07-T06N-R64W                                  | Wellbore  | BISHOP A08-665 AWB |
| Slot                              | SLOT#03 BISHOP A08-665 (861'FNL & 394'FEL,SEC.07) |           |                    |

### WELLPATH DATA (184 stations)

| MD [ft]  | Inclination [°] | Azimuth [°] | TVD [ft] | Vert Sect [ft] | North [ft] | East [ft] | Latitude   | Longitude    | DLS [°/100ft] | Comments |
|----------|-----------------|-------------|----------|----------------|------------|-----------|------------|--------------|---------------|----------|
| 12701.00 | 90.220          | 89.560      | 6836.56  | 6051.42        | -685.44    | 6021.99   | 40.5033261 | -104.5634682 | 0.32          |          |
| 12796.00 | 90.120          | 89.460      | 6836.28  | 6146.21        | -684.63    | 6116.98   | 40.5033256 | -104.5631266 | 0.15          |          |
| 12891.00 | 90.650          | 89.840      | 6835.64  | 6241.01        | -684.05    | 6211.98   | 40.5033244 | -104.5627850 | 0.69          |          |
| 13080.00 | 90.520          | 89.650      | 6833.71  | 6429.64        | -683.21    | 6400.97   | 40.5033213 | -104.5621054 | 0.12          |          |
| 13175.00 | 90.400          | 89.530      | 6832.95  | 6524.44        | -682.53    | 6495.96   | 40.5033204 | -104.5617638 | 0.18          |          |
| 13270.00 | 89.880          | 88.900      | 6832.72  | 6619.20        | -681.23    | 6590.95   | 40.5033212 | -104.5614222 | 0.86          |          |
| 13365.00 | 90.460          | 89.870      | 6832.43  | 6713.98        | -680.21    | 6685.94   | 40.5033212 | -104.5610806 | 1.19          |          |
| 13460.00 | 90.250          | 88.430      | 6831.85  | 6808.72        | -678.80    | 6780.93   | 40.5033223 | -104.5607390 | 1.53          |          |
| 13555.00 | 90.460          | 89.470      | 6831.26  | 6903.45        | -677.06    | 6875.91   | 40.5033243 | -104.5603975 | 1.12          |          |
| 13650.00 | 90.340          | 89.670      | 6830.59  | 6998.24        | -676.34    | 6970.91   | 40.5033235 | -104.5600559 | 0.25          |          |
| 13745.00 | 90.310          | 89.420      | 6830.05  | 7093.04        | -675.59    | 7065.90   | 40.5033228 | -104.5597143 | 0.27          |          |
| 13840.00 | 90.310          | 89.660      | 6829.54  | 7187.83        | -674.83    | 7160.90   | 40.5033222 | -104.5593726 | 0.25          |          |
| 13934.00 | 90.280          | 89.650      | 6829.06  | 7281.64        | -674.26    | 7254.89   | 40.5033210 | -104.5590346 | 0.03          |          |
| 14029.00 | 90.340          | 89.490      | 6828.54  | 7376.44        | -673.55    | 7349.89   | 40.5033202 | -104.5586930 | 0.18          |          |
| 14124.00 | 90.180          | 92.500      | 6828.11  | 7471.35        | -675.20    | 7444.86   | 40.5033129 | -104.5583516 | 3.17          |          |
| 14313.00 | 90.090          | 89.580      | 6827.67  | 7660.19        | -678.63    | 7633.81   | 40.5032979 | -104.5576723 | 1.55          |          |
| 14502.00 | 90.400          | 90.000      | 6826.86  | 7848.83        | -677.93    | 7822.81   | 40.5032943 | -104.5569927 | 0.28          |          |
| 14597.00 | 90.310          | 89.970      | 6826.27  | 7943.67        | -677.91    | 7917.81   | 40.5032916 | -104.5566512 | 0.10          |          |
| 14691.00 | 90.090          | 89.750      | 6825.94  | 8037.50        | -677.68    | 8011.80   | 40.5032895 | -104.5563132 | 0.33          |          |
| 14786.00 | 90.000          | 89.620      | 6825.87  | 8132.31        | -677.16    | 8106.80   | 40.5032882 | -104.5559716 | 0.17          |          |
| 14880.00 | 90.280          | 89.060      | 6825.64  | 8226.09        | -676.07    | 8200.80   | 40.5032884 | -104.5556336 | 0.67          |          |
| 14975.00 | 90.310          | 88.660      | 6825.15  | 8320.80        | -674.18    | 8295.78   | 40.5032908 | -104.5552920 | 0.42          |          |
| 15069.00 | 90.340          | 88.730      | 6824.61  | 8414.50        | -672.04    | 8389.75   | 40.5032939 | -104.5549540 | 0.08          |          |
| 15163.00 | 90.520          | 88.620      | 6823.91  | 8508.19        | -669.87    | 8483.72   | 40.5032972 | -104.5546160 | 0.22          |          |
| 15258.00 | 90.550          | 88.800      | 6823.02  | 8602.88        | -667.73    | 8578.69   | 40.5033002 | -104.5542744 | 0.19          |          |
| 15352.00 | 90.120          | 88.580      | 6822.47  | 8696.58        | -665.58    | 8672.67   | 40.5033034 | -104.5539365 | 0.51          |          |
| 15447.00 | 90.180          | 88.750      | 6822.22  | 8791.27        | -663.37    | 8767.64   | 40.5033067 | -104.5535949 | 0.19          |          |
| 15541.00 | 90.490          | 88.670      | 6821.67  | 8884.97        | -661.25    | 8861.62   | 40.5033097 | -104.5532569 | 0.34          |          |
| 15635.00 | 90.340          | 88.800      | 6820.99  | 8978.67        | -659.18    | 8955.59   | 40.5033127 | -104.5529189 | 0.21          |          |
| 15730.00 | 90.220          | 88.510      | 6820.53  | 9073.35        | -656.95    | 9050.56   | 40.5033160 | -104.5525773 | 0.33          |          |
| 15824.00 | 90.400          | 89.260      | 6820.02  | 9167.07        | -655.12    | 9144.54   | 40.5033183 | -104.5522393 | 0.82          |          |
| 15919.00 | 90.280          | 88.780      | 6819.46  | 9261.81        | -653.49    | 9239.53   | 40.5033200 | -104.5518977 | 0.52          |          |
| 16013.00 | 90.120          | 88.890      | 6819.13  | 9355.52        | -651.58    | 9333.51   | 40.5033224 | -104.5515597 | 0.21          |          |
| 16107.00 | 90.060          | 89.110      | 6818.98  | 9449.26        | -649.94    | 9427.49   | 40.5033242 | -104.5512217 | 0.24          |          |
| 16201.00 | 90.250          | 89.000      | 6818.73  | 9543.00        | -648.39    | 9521.48   | 40.5033257 | -104.5508837 | 0.23          |          |
| 16296.00 | 90.400          | 88.800      | 6818.19  | 9637.72        | -646.57    | 9616.46   | 40.5033279 | -104.5505421 | 0.26          |          |
| 16390.00 | 90.150          | 88.490      | 6817.74  | 9731.41        | -644.35    | 9710.43   | 40.5033312 | -104.5502042 | 0.42          |          |
| 16485.00 | 90.180          | 88.650      | 6817.46  | 9826.09        | -641.97    | 9805.40   | 40.5033349 | -104.5498626 | 0.17          |          |
| 16579.00 | 90.490          | 88.660      | 6816.91  | 9919.78        | -639.77    | 9899.38   | 40.5033382 | -104.5495246 | 0.33          |          |
| 16673.00 | 90.000          | 88.350      | 6816.51  | 10013.45       | -637.32    | 9993.34   | 40.5033422 | -104.5491866 | 0.62          |          |
| 16768.00 | 89.780          | 88.050      | 6816.69  | 10108.07       | -634.33    | 10088.29  | 40.5033476 | -104.5488451 | 0.39          |          |
| 16862.00 | 90.340          | 89.670      | 6816.60  | 10201.79       | -632.46    | 10182.27  | 40.5033500 | -104.5485071 | 1.82          |          |
| 16957.00 | 90.250          | 88.500      | 6816.11  | 10296.53       | -630.94    | 10277.26  | 40.5033513 | -104.5481655 | 1.24          |          |
| 17051.00 | 90.030          | 88.770      | 6815.88  | 10390.22       | -628.71    | 10371.23  | 40.5033547 | -104.5478275 | 0.37          |          |
| 17145.00 | 89.850          | 88.550      | 6815.98  | 10483.91       | -626.51    | 10465.20  | 40.5033580 | -104.5474896 | 0.30          |          |

| REFERENCE WELLPATH IDENTIFICATION |   |           |                    |
|-----------------------------------|---|-----------|--------------------|
| Operator                          | NOBLE ENERGY, INC                                 | Well      | BISHOP A08-665     |
| Field                             | WELD COUNTY (NOBLE NAD 83 GRID)                   | API/Legal | 05-123-52077       |
| Facility                          | SEC.07-T06N-R64W                                  | Wellbore  | BISHOP A08-665 AWB |
| Slot                              | SLOT#03 BISHOP A08-665 (861'FNL & 394'FEL,SEC.07) |           |                    |

| WELLPATH DATA (184 stations) † = interpolated, ‡ = extrapolated station |                 |             |          |                |            |           |            |              |               |  |
|---|-----------------|-------------|----------|----------------|------------|-----------|------------|--------------|---------------|--|
| MD [ft]   | Inclination [°] | Azimuth [°] | TVD [ft] | Vert Sect [ft] | North [ft] | East [ft] | Latitude   | Longitude    | DLS [°/100ft] | Comments                                     |
| 17239.00  | 90.150          | 89.050      | 6815.98  | 10577.62       | -624.54    | 10559.18  | 40.5033606 | -104.5471516 | 0.62          |  |
| 17334.00  | 89.820          | 88.940      | 6816.00  | 10672.36       | -622.87    | 10654.17  | 40.5033624 | -104.5468100 | 0.37          |  |
| 17429.00  | 89.780          | 89.180      | 6816.33  | 10767.10       | -621.31    | 10749.16  | 40.5033638 | -104.5464684 | 0.26          | Last BH MWD Survey                           |
| 17464.00‡   | 89.780          | 89.180      | 6816.47  | 10802.01       | -620.81    | 10784.15  | 40.5033642 | -104.5463425 | 0.00          | Projection to Bit 1665'FNL & 201'FEL,SEC.09) |

| REFERENCE WELLPATH IDENTIFICATION |   |           |                    |
|-----------------------------------|---|-----------|--------------------|
| Operator                          | NOBLE ENERGY, INC                                 | Well      | BISHOP A08-665     |
| Field                             | WELD COUNTY (NOBLE NAD 83 GRID)                   | API/Legal | 05-123-52077       |
| Facility                          | SEC.07-T06N-R64W                                  | Wellbore  | BISHOP A08-665 AWB |
| Slot                              | SLOT#03 BISHOP A08-665 (861'FNL & 394'FEL,SEC.07) |           |                    |

| TARGETS  |                                       |            |           |                   |                    |            |              |         |
|--|---------------------------------------|------------|-----------|-------------------|--------------------|------------|--------------|---------|
| Name   | TVD [ft]                              | North [ft] | East [ft] | Grid East [US ft] | Grid North [US ft] | Latitude   | Longitude    | Shape   |
| OGDP 1 SEC.07-T06N-R64W                              | -1.00                                 | -0.30      | -28.92    | 3254380.72        | 1428262.61         | 40.5053800 | -104.5852000 | polygon |
|  | 2D Polygon: dimensions not calculated |            |           |                   |                    |            |              |         |
| OGDP 1 SEC.08-T06N-R64W                              | -1.00                                 | -0.30      | -28.92    | 3254380.72        | 1428262.61         | 40.5053800 | -104.5852000 | polygon |
|  | 2D Polygon: dimensions not calculated |            |           |                   |                    |            |              |         |
| OGDP 1 SEC.09-T06N-R64W                              | -1.00                                 | -0.30      | -28.92    | 3254380.72        | 1428262.61         | 40.5053800 | -104.5852000 | polygon |
|  | 2D Polygon: dimensions not calculated |            |           |                   |                    |            |              |         |
| BISHOP A08-665 BHL Rev-1 (1665'FSL & 200'FEL,SEC.09) | 6814.00                               | -620.50    | 10785.16  | 3265194.41        | 1427642.44         | 40.5033650 | -104.5463389 | point   |
| BISHOP A08-665 LP Rev-1 (1656'FNL & 200'FWL,SEC.08)  | 6814.00                               | -781.60    | 601.57    | 3255011.18        | 1427481.34         | 40.5032177 | -104.5829620 | point   |
| BISHOP A08-665 BHL Rev-2 (1665'FNL & 200'FEL,SEC.09) | 6817.00                               | -620.50    | 10785.16  | 3265194.41        | 1427642.44         | 40.5033650 | -104.5463389 | point   |
| BISHOP A08-665 REV-2 T2 4900'VS                      | 6836.00                               | -714.12    | 4867.23   | 3259276.69        | 1427548.81         | 40.5032808 | -104.5676214 | point   |
| BISHOP A08-665 T2 4900'VS                            | 6836.00                               | -713.39    | 4913.08   | 3259322.54        | 1427549.54         | 40.5032815 | -104.5674565 | point   |
| BISHOP A08-665 LP Rev-2 (1656'FNL & 200'FWL,SEC.08)  | 6851.00                               | -781.60    | 601.57    | 3255011.18        | 1427481.34         | 40.5032177 | -104.5829620 | point   |
| BISHOP A08-665 REV-2 T1 2750'VS                      | 6851.00                               | -748.22    | 2711.65   | 3257121.19        | 1427514.71         | 40.5032491 | -104.5753735 | point   |
| BISHOP A08-665 T1 2750'VS                            | 6851.00                               | -747.50    | 2757.60   | 3257167.14        | 1427515.44         | 40.5032498 | -104.5752083 | point   |
| DP 134 Hardlines (300'FNL/FSL & 200'FEL/FWL)         | 7000.00                               | -0.10      | -45.05    | 3254364.58        | 1428262.81         | 40.5053810 | -104.5852580 | polygon |
|  | 2D Polygon: dimensions not calculated |            |           |                   |                    |            |              |         |

| REFERENCE WELLPATH IDENTIFICATION |   |           |                    |
|-----------------------------------|---|-----------|--------------------|
| Operator                          | NOBLE ENERGY, INC                                 | Well      | BISHOP A08-665     |
| Field                             | WELD COUNTY (NOBLE NAD 83 GRID)                   | API/Legal | 05-123-52077       |
| Facility                          | SEC.07-T06N-R64W                                  | Wellbore  | BISHOP A08-665 AWB |
| Slot                              | SLOT#03 BISHOP A08-665 (861'FNL & 394'FEL,SEC.07) |           |                    |

| WELLPATH COMPOSITION - Ref Wellbore: BISHOP A08-665 AWB Ref Wellpath: BISHOP A08-665 AWP |             |                              |  |                    |             |
|--|-------------|------------------------------|--|--------------------|-------------|
| Start MD [ft]  | End MD [ft] | Positional Uncertainty Model | Log Name/Comment   | Wellbore           | Survey Date |
| 29.00  | 1982.00     | OWSG MWD rev2 (MS+IFR1)      | 13.5" EVO Surface OWSG MWD rev2 (MS + IFR1) <130'-1982'> | BISHOP A08-665 AWB | 1/1/2024    |
| 1982.00  | 17464.00    | OWSG MWD rev2 (MS+IFR1)      | 8.5" ATC OWSG MWD rev2 (MS+IFR1) <2089'-17429'>          | BISHOP A08-665 AWB | 1/29/2024   |

| REFERENCE WELLPATH IDENTIFICATION |   |           |                    |
|-----------------------------------|---|-----------|--------------------|
| Operator                          | NOBLE ENERGY, INC                                 | Well      | BISHOP A08-665     |
| Field                             | WELD COUNTY (NOBLE NAD 83 GRID)                   | API/Legal | 05-123-52077       |
| Facility                          | SEC.07-T06N-R64W                                  | Wellbore  | BISHOP A08-665 AWB |
| Slot                              | SLOT#03 BISHOP A08-665 (861'FNL & 394'FEL,SEC.07) |           |                    |

| WELLPATH COMMENTS |                 |             |          |   |
|-------------------|-----------------|-------------|----------|---|
| MD [ft]           | Inclination [°] | Azimuth [°] | TVD [ft] | Comment   |
| 130.00            | 0.460           | 277.360     | 130.00   | First BH MWD Survey                             |
| 7279.16           | 88.111          | 91.727      | 6868.59  | Cross 200' Hardline (1654'FNL & 200'FWL,SEC.08) |
| 7282.00           | 88.372          | 91.725      | 6868.68  | Shallowest MD for Perf                          |
| 17429.00          | 89.780          | 89.180      | 6816.33  | Last BH MWD Survey                              |
| 17464.00          | 89.780          | 89.180      | 6816.47  | Projection to Bit 1665'FNL & 201'FEL,SEC.09)    |