

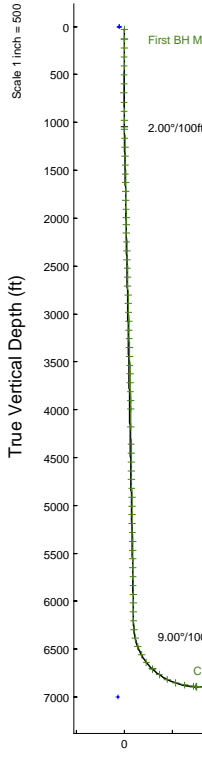
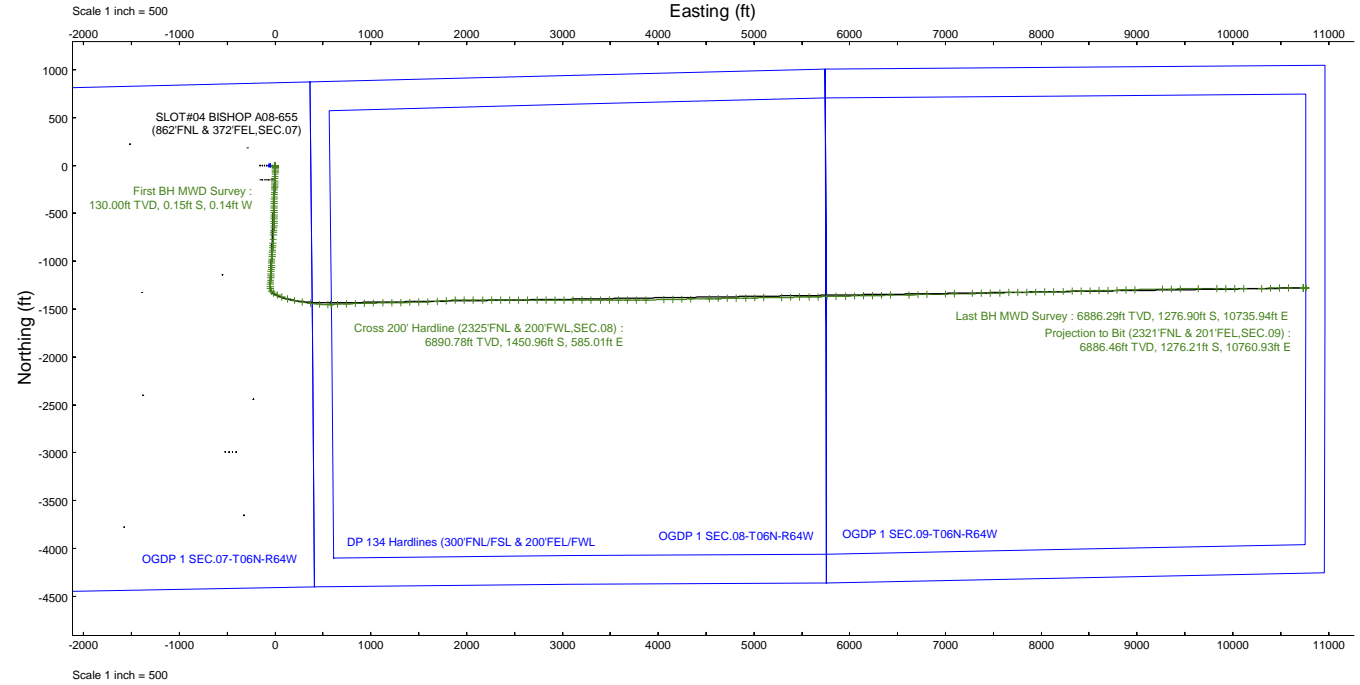
NOBLE ENERGY, INC

Location: COLORADO Slot: SLOT#04 BISHOP A08-655 (862'FNL & 372'FEL, SEC.07)
 Field: WELD COUNTY (NOBLE NAD 83 GRID) Well: BISHOP A08-655
 Facility: SEC.07-T06N-R64W Wellbore: BISHOP A08-655 PWB



Plot reference wellpath is BISHOP A08-655 (REV-D.0) PWP	Grid System: NAD83 / Lambert Colorado SP, Northern Zone (501), US feet
True vertical depths are referenced to RIG (4742GL+29KB@4771'RKB) (RKB)	North Reference: Grid north
Reference wellpath measured depths are referenced to RIG (4742GL+29KB@4771'RKB) (RKB)	Scale: True distance
RIG (4742GL+29KB@4771'RKB) (RKB) to Mean Sea Level: 4771 feet	Coordinates are in feet referenced to Slot
Mean Sea Level to Ground level (At Slot: SLOT#04 BISHOP A08-655 (862'FNL & 372'FEL, SEC.07)): 0 feet	Depths are in feet
Offset wellpath MDs are referenced to each path's default MD datum	Created by: martiam01 on 2024-03-07; Database: WA_Denver

Location Information					
Facility Name		Grid East (US ft)	Grid North (US ft)	Latitude	Longitude
SEC.07-T06N-R64W		3254380.716	1428262.611	40°30'19.3680"N	104°35'6.7200"W
Slot	Local N (ft)	Local E (ft)	Grid East (US ft)	Grid North (US ft)	Latitude
SLOT#04 BISHOP A08-655 (862'FNL & 372'FEL, SEC.07)	0.17	51.45	3254432.162	1428262.776	40°30'19.3644"N
RIG (4742GL+29KB@4771'RKB) (RKB) to Ground level (At Slot: SLOT#04 BISHOP A08-655 (862'FNL & 372'FEL, SEC.07))					4771ft
Mean Sea Level to Ground level (At Slot: SLOT#04 BISHOP A08-655 (862'FNL & 372'FEL, SEC.07))					0ft
RIG (4742GL+29KB@4771'RKB) (RKB) to Mean Sea Level					4771ft



MD (ft)	INC (deg)	AZ (deg)	TVD (ft)	Local N (ft)	Local E (ft)	Comment
130	0.23	222.94	130	-0.15	-0.14	First BH MWD Survey
7426.58	86.602	88.333	6890.78	-1450.96	585.01	Cross 200' Hardline (2325'FNL & 200'FWL, SEC.08)
17580	89.6	88.42	6886.29	-1276.9	10735.94	Last BH MWD Survey
17605	89.6	88.42	6886.46	-1276.21	10760.93	Projection to Bit (2321'FNL & 201'FEL, SEC.09)

Azimuth 96.77° with reference 0.00 N, 0.00 E

Scale 1 inch = 500



Actual Wellpath Report

BISHOP A08-655 AWP

Page 1 of 7



REFERENCE WELLPATH IDENTIFICATION

Operator	NOBLE ENERGY, INC	Well	BISHOP A08-655
Field	WELD COUNTY (NOBLE NAD 83 GRID)	API/Legal	05-123-52078
Facility	SEC.07-T06N-R64W	Wellbore	BISHOP A08-655 AWB
Slot	SLOT#04 BISHOP A08-655 (862'FNL & 372'FEL,SEC.07)		

REPORT SETUP INFORMATION

Projection System	NAD83 / Lambert Colorado SP, Northern Zone (501), US feet	Software System	WellArchitect® 6.0
North Reference	Grid	User	Martsam01
Scale	0.999967	Report Generated	3/4/2024 at 5:50:47 PM
Convergence at slot	0.59° East	Database	WA_Denver

WELLPATH LOCATION

	Local coordinates		Grid coordinates		Geographic coordinates	
	North[ft]	East[ft]	Easting[US ft]	Northing[US ft]	Latitude	Longitude
Slot Location	0.17	51.45	3254432.16	1428262.78	40.5053790°	-104.5850150°
Facility Reference Pt			3254380.72	1428262.61	40.5053800°	-104.5852000°
Field Reference Pt			3000000.00	4454105.15	48.7761986°	-105.5000000°

WELLPATH DATUM

Calculation method	Minimum curvature	RIG (4742'GL+29'KB@4771'RKB) (RKB) to Facility Vertical Datum	4771.00ft
Horizontal Reference Pt	Slot	RIG (4742'GL+29'KB@4771'RKB) (RKB) to Mean Sea Level	4771.00ft
Vertical Reference Pt	RIG (4742'GL+29'KB@4771'RKB) (RKB)	RIG (4742'GL+29'KB@4771'RKB) (RKB) to Ground Level at Slot (SLOT#04 BISHOP A08-655 (862'FNL & 372'FEL,SEC.07))	4771.00ft
MD Reference Pt	RIG (4742'GL+29'KB@4771'RKB) (RKB)	Section Origin	N 0.00, E 0.00 ft
Field Vertical Reference	Mean Sea Level	Section Azimuth	96.77°

REFERENCE WELLPATH IDENTIFICATION			
Operator	NOBLE ENERGY, INC	Well	BISHOP A08-655
Field	WELD COUNTY (NOBLE NAD 83 GRID)	API/Legal	05-123-52078
Facility	SEC.07-T06N-R64W	Wellbore	BISHOP A08-655 AWB
Slot	SLOT#04 BISHOP A08-655 (862'FNL & 372'FEL,SEC.07)		

WELLPATH DATA (177 stations) † = interpolated, ‡ = extrapolated station

MD [ft]	Inclination [°]	Azimuth [°]	TVD [ft]	Vert Sect [ft]	North [ft]	East [ft]	Latitude	Longitude	DLS [°/100ft]	Comments
0.00†	0.000	222.940	0.00	0.00	0.00	0.00	40.5053790	-104.5850150	0.00	
29.00	0.000	222.940	29.00	0.00	0.00	0.00	40.5053790	-104.5850150	0.00	
130.00	0.230	222.940	130.00	-0.12	-0.15	-0.14	40.5053786	-104.5850155	0.23	First BH MWD Survey
221.00	0.210	273.600	221.00	-0.39	-0.27	-0.43	40.5053783	-104.5850166	0.21	
314.00	0.400	225.090	314.00	-0.77	-0.49	-0.83	40.5053777	-104.5850180	0.33	
409.00	0.370	284.230	409.00	-1.28	-0.65	-1.36	40.5053773	-104.5850199	0.40	
504.00	0.230	265.070	503.99	-1.77	-0.59	-1.85	40.5053774	-104.5850217	0.18	
598.00	0.590	251.650	597.99	-2.39	-0.76	-2.50	40.5053770	-104.5850240	0.39	
693.00	0.940	181.100	692.99	-2.75	-1.69	-2.98	40.5053744	-104.5850258	0.98	
788.00	2.140	171.120	787.95	-2.20	-4.22	-2.72	40.5053675	-104.5850249	1.29	
882.00	3.390	168.020	881.84	-0.83	-8.68	-1.87	40.5053552	-104.5850220	1.34	
977.00	5.170	171.800	976.57	1.18	-15.66	-0.67	40.5053360	-104.5850180	1.90	
1072.00	6.500	174.930	1071.08	3.39	-25.25	0.41	40.5053097	-104.5850145	1.44	
1167.00	8.490	177.650	1165.26	5.60	-37.62	1.17	40.5052757	-104.5850122	2.13	
1261.00	10.210	180.370	1258.01	7.63	-52.88	1.40	40.5052338	-104.5850119	1.89	
1356.00	11.870	182.800	1351.25	9.25	-71.06	0.87	40.5051839	-104.5850145	1.81	
1451.00	13.390	182.370	1443.95	10.77	-91.81	-0.06	40.5051270	-104.5850186	1.60	
1546.00	14.150	184.050	1536.21	12.17	-114.39	-1.33	40.5050651	-104.5850240	0.90	
1640.00	13.930	184.250	1627.41	13.21	-137.13	-2.98	40.5050027	-104.5850308	0.24	
1735.00	13.750	182.670	1719.65	14.52	-159.81	-4.36	40.5049405	-104.5850366	0.44	
1830.00	13.300	181.840	1812.01	16.27	-182.01	-5.23	40.5048796	-104.5850406	0.52	
1925.00	12.660	182.390	1904.59	18.01	-203.34	-6.02	40.5048211	-104.5850442	0.69	
2015.00	12.340	181.060	1992.45	19.72	-222.81	-6.61	40.5047677	-104.5850470	0.48	
2089.00	12.020	181.370	2064.79	21.23	-238.41	-6.94	40.5047248	-104.5850488	0.44	
2184.00	14.120	180.660	2157.32	23.40	-259.89	-7.31	40.5046659	-104.5850509	2.22	
2279.00	14.110	181.210	2249.45	25.76	-283.06	-7.69	40.5046023	-104.5850531	0.14	
2374.00	14.100	181.160	2341.59	28.01	-306.20	-8.17	40.5045388	-104.5850557	0.02	
2469.00	14.160	180.820	2433.71	30.35	-329.39	-8.57	40.5044752	-104.5850580	0.11	
2563.00	14.180	181.180	2524.85	32.66	-352.40	-8.97	40.5044120	-104.5850603	0.10	
2658.00	14.090	180.950	2616.98	34.97	-375.60	-9.40	40.5043484	-104.5850627	0.11	
2753.00	14.170	180.690	2709.10	37.38	-398.78	-9.73	40.5042847	-104.5850648	0.11	
2848.00	14.010	181.200	2801.25	39.73	-421.91	-10.11	40.5042213	-104.5850670	0.21	
2942.00	14.300	180.930	2892.39	42.02	-444.89	-10.54	40.5041582	-104.5850694	0.32	
3037.00	14.040	181.120	2984.50	44.35	-468.14	-10.95	40.5040944	-104.5850718	0.28	
3132.00	14.140	180.810	3076.64	46.69	-491.27	-11.34	40.5040309	-104.5850740	0.13	
3226.00	14.140	180.440	3167.79	49.15	-514.23	-11.59	40.5039679	-104.5850758	0.10	
3321.00	13.970	181.100	3259.95	51.56	-537.30	-11.90	40.5039046	-104.5850777	0.25	
3416.00	13.950	180.890	3352.14	53.87	-560.21	-12.30	40.5038417	-104.5850800	0.06	
3511.00	14.000	180.930	3444.33	56.21	-583.15	-12.67	40.5037788	-104.5850822	0.05	
3605.00	14.080	180.480	3535.52	58.62	-605.96	-12.95	40.5037162	-104.5850840	0.14	
3700.00	14.100	180.760	3627.67	61.10	-629.08	-13.20	40.5036527	-104.5850858	0.07	
3795.00	14.140	181.790	3719.80	63.32	-652.25	-13.71	40.5035892	-104.5850885	0.27	
3889.00	14.200	183.240	3810.94	65.03	-675.24	-14.72	40.5035261	-104.5850930	0.38	
3984.00	14.330	183.720	3903.01	66.38	-698.60	-16.14	40.5034620	-104.5850990	0.19	
4079.00	14.260	183.810	3995.07	67.61	-722.01	-17.68	40.5033978	-104.5851054	0.08	

REFERENCE WELLPATH IDENTIFICATION			
Operator	NOBLE ENERGY, INC	Well	BISHOP A08-655
Field	WELD COUNTY (NOBLE NAD 83 GRID)	API/Legal	05-123-52078
Facility	SEC.07-T06N-R64W	Wellbore	BISHOP A08-655 AWB
Slot	SLOT#04 BISHOP A08-655 (862'FNL & 372'FEL,SEC.07)		

WELLPATH DATA (177 stations) † = interpolated, ‡ = extrapolated station

MD [ft]	Inclination [°]	Azimuth [°]	TVD [ft]	Vert Sect [ft]	North [ft]	East [ft]	Latitude	Longitude	DLS [°/100ft]	Comments
4268.00	14.160	183.750	4178.28	70.03	-768.30	-20.74	40.5032708	-104.5851181	0.05	
4458.00	14.110	183.680	4362.53	72.51	-814.60	-23.75	40.5031438	-104.5851306	0.03	
4553.00	14.130	183.800	4454.66	73.74	-837.73	-25.26	40.5030804	-104.5851369	0.04	
4647.00	14.090	183.790	4545.82	74.93	-860.60	-26.78	40.5030177	-104.5851432	0.04	
4742.00	14.080	183.750	4637.97	76.14	-883.67	-28.30	40.5029544	-104.5851495	0.01	
4837.00	14.070	184.130	4730.12	77.28	-906.71	-29.89	40.5028912	-104.5851561	0.10	
4931.00	14.090	183.330	4821.29	78.50	-929.53	-31.37	40.5028286	-104.5851623	0.21	
5026.00	14.100	183.240	4913.43	79.91	-952.63	-32.70	40.5027652	-104.5851679	0.03	
5121.00	14.110	183.680	5005.57	81.24	-975.74	-34.10	40.5027018	-104.5851738	0.11	
5216.00	14.060	183.500	5097.71	82.53	-998.81	-35.54	40.5026386	-104.5851799	0.07	
5311.00	13.140	183.610	5190.05	83.78	-1021.11	-36.93	40.5025774	-104.5851857	0.97	
5405.00	13.470	183.500	5281.52	85.00	-1042.70	-38.27	40.5025182	-104.5851913	0.35	
5500.00	13.770	183.590	5373.85	86.26	-1065.03	-39.65	40.5024569	-104.5851971	0.32	
5595.00	13.450	183.400	5466.18	87.54	-1087.34	-41.02	40.5023957	-104.5852028	0.34	
5689.00	12.530	183.430	5557.78	88.78	-1108.43	-42.27	40.5023379	-104.5852081	0.98	
5784.00	13.410	183.620	5650.35	89.98	-1129.71	-43.59	40.5022795	-104.5852136	0.93	
5879.00	13.920	183.410	5742.66	91.26	-1152.11	-44.96	40.5022181	-104.5852194	0.54	
5974.00	13.740	183.050	5834.91	92.66	-1174.79	-46.24	40.5021559	-104.5852249	0.21	
6069.00	13.740	183.120	5927.19	94.12	-1197.32	-47.46	40.5020941	-104.5852301	0.02	
6163.00	13.710	183.580	6018.51	95.45	-1219.58	-48.76	40.5020330	-104.5852356	0.12	
6258.00	12.760	183.690	6110.98	96.64	-1241.29	-50.14	40.5019734	-104.5852413	1.00	
6353.00	14.280	183.840	6203.35	97.80	-1263.45	-51.60	40.5019127	-104.5852474	1.60	
6448.00	16.490	171.350	6294.96	101.99	-1288.48	-50.35	40.5018439	-104.5852439	4.18	
6542.00	16.800	140.290	6385.20	115.42	-1312.17	-39.65	40.5017786	-104.5852062	9.36	
6637.00	22.060	122.760	6474.84	141.45	-1332.41	-15.84	40.5017224	-104.5851214	8.21	
6732.00	30.170	115.470	6560.09	180.17	-1352.37	20.79	40.5016666	-104.5849904	9.17	
6827.00	38.780	111.220	6638.34	231.70	-1373.45	70.17	40.5016073	-104.5848136	9.41	
6922.00	46.490	105.240	6708.21	294.71	-1393.31	131.26	40.5015511	-104.5845947	9.16	
7016.00	54.880	102.140	6767.72	366.84	-1410.39	201.87	40.5015022	-104.5843415	9.28	
7111.00	64.240	100.030	6815.80	448.42	-1426.04	282.17	40.5014569	-104.5840534	10.04	
7206.00	72.040	97.270	6851.15	536.46	-1439.24	369.26	40.5014183	-104.5837407	8.64	
7301.00	78.780	94.990	6875.07	628.33	-1449.02	460.62	40.5013888	-104.5834126	7.46	
7395.00	84.880	88.520	6888.44	720.92	-1451.83	553.53	40.5013785	-104.5830786	9.41	
7426.58†	86.602	88.333	6890.78	752.08	-1450.96	585.01	40.5013800	-104.5829654	5.48	Cross 200' Hardline (2325'FNL & 200'FWL,SEC.08)
7429.00†	86.734	88.319	6890.92	754.47	-1450.89	587.42	40.5013801	-104.5829567	5.48	Shallowest MD for Perf
7490.00	90.060	87.960	6892.63	814.75	-1448.91	648.36	40.5013838	-104.5827375	5.48	
7585.00	89.940	88.100	6892.63	908.64	-1445.64	743.30	40.5013901	-104.5823960	0.19	
7680.00	90.090	88.060	6892.60	1002.55	-1442.46	838.25	40.5013961	-104.5820545	0.16	
7775.00	90.030	88.050	6892.50	1096.45	-1439.24	933.19	40.5014022	-104.5817130	0.06	
7869.00	90.150	88.900	6892.36	1189.47	-1436.74	1027.16	40.5014064	-104.5813751	0.91	
7964.00	89.570	88.890	6892.59	1283.57	-1434.90	1122.14	40.5014088	-104.5810335	0.61	
8059.00	89.970	88.840	6892.97	1377.67	-1433.02	1217.12	40.5014112	-104.5806919	0.42	
8154.00	89.750	88.930	6893.20	1471.77	-1431.17	1312.10	40.5014136	-104.5803503	0.25	
8249.00	90.090	88.950	6893.33	1565.88	-1429.42	1407.08	40.5014157	-104.5800087	0.36	
8343.00	90.830	88.430	6892.58	1658.94	-1427.27	1501.06	40.5014189	-104.5796708	0.96	

REFERENCE WELLPATH IDENTIFICATION			
Operator	NOBLE ENERGY, INC	Well	BISHOP A08-655
Field	WELD COUNTY (NOBLE NAD 83 GRID)	API/Legal	05-123-52078
Facility	SEC.07-T06N-R64W	Wellbore	BISHOP A08-655 AWB
Slot	SLOT#04 BISHOP A08-655 (862'FNL & 372'FEL,SEC.07)		

WELLPATH DATA (177 stations)

MD [ft]	Inclination [°]	Azimuth [°]	TVD [ft]	Vert Sect [ft]	North [ft]	East [ft]	Latitude	Longitude	DLS [°/100ft]	Comments
8438.00	89.480	86.590	6892.32	1752.70	-1423.14	1595.96	40.5014276	-104.5793294	2.40	
8533.00	89.720	86.480	6892.99	1846.18	-1417.40	1690.78	40.5014406	-104.5789882	0.28	
8628.00	89.570	86.870	6893.58	1939.71	-1411.89	1785.62	40.5014530	-104.5786470	0.44	
8722.00	89.630	87.840	6894.23	2032.43	-1407.55	1879.52	40.5014623	-104.5783092	1.03	
8817.00	89.850	90.180	6894.66	2126.56	-1405.91	1974.50	40.5014641	-104.5779677	2.47	
8912.00	89.880	90.020	6894.89	2220.91	-1406.08	2069.50	40.5014609	-104.5776261	0.17	
9007.00	89.750	89.810	6895.19	2315.23	-1405.93	2164.50	40.5014586	-104.5772845	0.26	
9101.00	89.600	90.090	6895.73	2408.56	-1405.85	2258.49	40.5014561	-104.5769465	0.34	
9196.00	89.750	90.220	6896.27	2502.93	-1406.11	2353.49	40.5014527	-104.5766050	0.21	
9291.00	89.750	89.970	6896.68	2597.28	-1406.27	2448.49	40.5014495	-104.5762634	0.26	
9386.00	89.780	90.150	6897.07	2691.63	-1406.37	2543.49	40.5014465	-104.5759218	0.19	
9480.00	90.280	90.190	6897.02	2785.01	-1406.65	2637.49	40.5014431	-104.5755839	0.53	
9575.00	90.740	90.080	6896.17	2879.37	-1406.87	2732.48	40.5014398	-104.5752423	0.50	
9670.00	90.620	90.040	6895.05	2973.71	-1406.97	2827.48	40.5014368	-104.5749007	0.13	
9764.00	90.460	89.990	6894.16	3067.05	-1406.99	2921.47	40.5014340	-104.5745628	0.18	
9859.00	90.680	90.050	6893.22	3161.39	-1407.03	3016.47	40.5014312	-104.5742212	0.24	
9954.00	90.740	90.060	6892.04	3255.73	-1407.12	3111.46	40.5014282	-104.5738797	0.06	
10049.00	89.820	89.820	6891.57	3350.05	-1407.02	3206.46	40.5014258	-104.5735381	1.00	
10143.00	89.820	89.720	6891.87	3443.35	-1406.64	3300.46	40.5014241	-104.5732001	0.11	
10238.00	89.850	90.050	6892.14	3537.66	-1406.45	3395.46	40.5014219	-104.5728585	0.35	
10333.00	89.880	89.820	6892.37	3631.98	-1406.34	3490.46	40.5014195	-104.5725169	0.24	
10428.00	89.850	90.060	6892.59	3726.31	-1406.24	3585.46	40.5014170	-104.5721753	0.25	
10522.00	90.830	89.920	6892.03	3819.65	-1406.23	3679.45	40.5014144	-104.5718374	1.05	
10617.00	90.060	89.940	6891.30	3913.97	-1406.11	3774.45	40.5014120	-104.5714958	0.81	
10712.00	89.850	88.840	6891.37	4008.18	-1405.10	3869.44	40.5014120	-104.5711542	1.18	
10901.00	90.090	88.430	6891.47	4195.27	-1400.60	4058.39	40.5014189	-104.5704747	0.25	
10996.00	90.000	88.960	6891.39	4289.33	-1398.43	4153.36	40.5014221	-104.5701331	0.57	
11091.00	90.000	89.120	6891.39	4383.46	-1396.84	4248.35	40.5014238	-104.5697915	0.17	
11185.00	90.000	88.950	6891.39	4476.61	-1395.26	4342.34	40.5014254	-104.5694535	0.18	
11375.00	89.970	89.040	6891.44	4664.86	-1391.93	4532.31	40.5014291	-104.5687703	0.05	
11469.00	89.880	88.860	6891.57	4757.98	-1390.20	4626.29	40.5014311	-104.5684323	0.21	
11564.00	89.750	88.810	6891.87	4852.07	-1388.27	4721.27	40.5014337	-104.5680907	0.15	
11659.00	90.090	88.910	6892.01	4946.17	-1386.38	4816.25	40.5014361	-104.5677492	0.37	
11754.00	89.820	89.070	6892.08	5040.29	-1384.71	4911.24	40.5014380	-104.5674076	0.33	
11848.00	89.820	89.140	6892.38	5133.45	-1383.24	5005.23	40.5014393	-104.5670696	0.07	
11943.00	89.940	89.090	6892.58	5227.60	-1381.77	5100.21	40.5014406	-104.5667280	0.14	
12133.00	90.000	88.860	6892.68	5415.85	-1378.37	5290.18	40.5014444	-104.5660448	0.13	
12227.00	90.220	88.920	6892.49	5508.96	-1376.55	5384.17	40.5014467	-104.5657068	0.24	
12322.00	89.540	88.740	6892.69	5603.04	-1374.61	5479.15	40.5014493	-104.5653652	0.74	
12417.00	90.000	88.870	6893.07	5697.13	-1372.63	5574.12	40.5014519	-104.5650236	0.50	
12512.00	89.820	88.730	6893.22	5791.21	-1370.64	5669.10	40.5014547	-104.5646821	0.24	
12607.00	89.720	88.630	6893.61	5885.26	-1368.45	5764.08	40.5014579	-104.5643405	0.15	
12702.00	89.660	88.890	6894.12	5979.33	-1366.40	5859.05	40.5014608	-104.5639989	0.28	
12797.00	89.780	88.650	6894.58	6073.40	-1364.36	5954.03	40.5014636	-104.5636573	0.28	
12891.00	90.090	88.800	6894.69	6166.48	-1362.27	6048.01	40.5014667	-104.5633194	0.37	

REFERENCE WELLPATH IDENTIFICATION			
Operator	NOBLE ENERGY, INC	Well	BISHOP A08-655
Field	WELD COUNTY (NOBLE NAD 83 GRID)	API/Legal	05-123-52078
Facility	SEC.07-T06N-R64W	Wellbore	BISHOP A08-655 AWB
Slot	SLOT#04 BISHOP A08-655 (862'FNL & 372'FEL,SEC.07)		

WELLPATH DATA (177 stations) † = interpolated, ‡ = extrapolated station										
MD [ft]	Inclination [°]	Azimuth [°]	TVD [ft]	Vert Sect [ft]	North [ft]	East [ft]	Latitude	Longitude	DLS [°/100ft]	Comments
12986.00	90.060	88.970	6894.57	6260.58	-1360.42	6142.99	40.5014690	-104.5629778	0.18	
13081.00	89.910	88.760	6894.59	6354.67	-1358.54	6237.97	40.5014714	-104.5626362	0.27	
13176.00	89.880	88.830	6894.76	6448.75	-1356.54	6332.95	40.5014741	-104.5622946	0.08	
13271.00	89.970	88.770	6894.89	6542.83	-1354.55	6427.93	40.5014768	-104.5619530	0.11	
13460.00	90.060	88.950	6894.84	6730.03	-1350.79	6616.89	40.5014817	-104.5612735	0.11	
13555.00	89.940	88.840	6894.84	6824.14	-1348.96	6711.87	40.5014839	-104.5609319	0.17	
13650.00	89.850	88.720	6895.01	6918.21	-1346.93	6806.85	40.5014867	-104.5605903	0.16	
13840.00	89.780	88.870	6895.63	7106.37	-1342.94	6996.81	40.5014922	-104.5599071	0.09	
13935.00	89.660	88.670	6896.09	7200.45	-1340.90	7091.78	40.5014950	-104.5595656	0.25	
14125.00	90.310	88.750	6896.14	7388.57	-1336.62	7281.74	40.5015012	-104.5588824	0.34	
14219.00	90.180	88.810	6895.74	7481.65	-1334.62	7375.71	40.5015040	-104.5585444	0.15	
14314.00	90.400	88.700	6895.26	7575.72	-1332.56	7470.69	40.5015068	-104.5582029	0.26	
14409.00	90.430	88.800	6894.57	7669.79	-1330.48	7565.66	40.5015098	-104.5578613	0.11	
14503.00	90.090	88.540	6894.14	7762.85	-1328.30	7659.64	40.5015130	-104.5575233	0.46	
14597.00	90.490	88.820	6893.67	7855.91	-1326.14	7753.61	40.5015162	-104.5571853	0.52	
14692.00	90.250	88.820	6893.05	7949.99	-1324.18	7848.59	40.5015188	-104.5568438	0.25	
14786.00	90.180	88.640	6892.70	8043.07	-1322.10	7942.57	40.5015218	-104.5565058	0.21	
14881.00	90.400	88.950	6892.22	8137.15	-1320.10	8037.54	40.5015245	-104.5561642	0.40	
14975.00	90.370	88.780	6891.59	8230.25	-1318.24	8131.52	40.5015269	-104.5558262	0.18	
15070.00	90.520	89.060	6890.85	8324.36	-1316.45	8226.50	40.5015290	-104.5554846	0.33	
15164.00	90.310	88.840	6890.17	8417.48	-1314.72	8320.48	40.5015310	-104.5551467	0.32	
15258.00	90.000	87.850	6889.92	8510.46	-1312.01	8414.44	40.5015357	-104.5548087	1.10	
15353.00	90.490	88.710	6889.51	8604.42	-1309.16	8509.40	40.5015407	-104.5544672	1.04	
15447.00	90.370	88.770	6888.80	8697.49	-1307.09	8603.37	40.5015437	-104.5541292	0.14	
15541.00	90.460	88.700	6888.12	8790.57	-1305.02	8697.35	40.5015466	-104.5537912	0.12	
15636.00	89.720	88.590	6887.97	8884.61	-1302.77	8792.32	40.5015500	-104.5534497	0.79	
15730.00	90.030	88.750	6888.18	8977.67	-1300.59	8886.29	40.5015532	-104.5531117	0.37	
15825.00	89.230	87.060	6888.79	9071.53	-1297.11	8981.22	40.5015600	-104.5527702	1.97	
16108.00	89.940	90.010	6890.84	9351.57	-1289.88	9264.09	40.5015715	-104.5517529	1.07	
16202.00	90.000	89.710	6890.89	9444.88	-1289.65	9358.09	40.5015694	-104.5514149	0.33	
16296.00	89.910	89.600	6890.97	9538.16	-1289.08	9452.09	40.5015682	-104.5510769	0.15	
16485.00	89.910	89.600	6891.26	9725.68	-1287.77	9641.08	40.5015663	-104.5503973	0.00	
16674.00	89.910	89.510	6891.56	9913.18	-1286.30	9830.08	40.5015647	-104.5497177	0.05	
16769.00	89.720	89.620	6891.87	10007.43	-1285.58	9925.08	40.5015639	-104.5493761	0.23	
16863.00	90.400	90.130	6891.77	10100.75	-1285.37	10019.07	40.5015617	-104.5490381	0.90	
16958.00	91.850	89.970	6889.90	10195.07	-1285.45	10114.05	40.5015587	-104.5486966	1.54	
17146.00	90.060	89.060	6886.77	10381.53	-1283.86	10302.01	40.5015575	-104.5480207	1.07	
17240.00	90.650	88.480	6886.19	10474.61	-1281.85	10395.99	40.5015603	-104.5476828	0.88	
17335.00	89.970	89.350	6885.67	10568.72	-1280.05	10490.97	40.5015624	-104.5473412	1.16	
17429.00	89.970	89.750	6885.72	10661.97	-1279.31	10584.96	40.5015617	-104.5470032	0.43	
17580.00	89.600	88.420	6886.29	10811.61	-1276.90	10735.94	40.5015638	-104.5464602	0.91	Last BH MWD Survey
17605.00‡	89.600	88.420	6886.46	10836.34	-1276.21	10760.93	40.5015650	-104.5463704	0.00	Projection to Bit (2321'FNL & 201'FEL,SEC.09)

REFERENCE WELLPATH IDENTIFICATION			
Operator	NOBLE ENERGY, INC	Well	BISHOP A08-655
Field	WELD COUNTY (NOBLE NAD 83 GRID)	API/Legal	05-123-52078
Facility	SEC.07-T06N-R64W	Wellbore	BISHOP A08-655 AWB
Slot	SLOT#04 BISHOP A08-655 (862'FNL & 372'FEL,SEC.07)		

TARGETS								
Name	TVD [ft]	North [ft]	East [ft]	Grid East [US ft]	Grid North [US ft]	Latitude	Longitude	Shape
OGDP 1 SEC.07-T06N-R64W	-1.00	-0.17	-51.45	3254380.72	1428262.61	40.5053800	-104.5852000	polygon
2D Polygon: dimensions not calculated								
OGDP 1 SEC.08-T06N-R64W	-1.00	-0.17	-51.45	3254380.72	1428262.61	40.5053800	-104.5852000	polygon
2D Polygon: dimensions not calculated								
OGDP 1 SEC.09-T06N-R64W	-1.00	-0.17	-51.45	3254380.72	1428262.61	40.5053800	-104.5852000	polygon
2D Polygon: dimensions not calculated								
BISHOP A08-655 BHL Rev-2 (2323'FNL & 200'FEL,SEC.09)	6892.00	-1278.42	10761.72	3265193.51	1426984.41	40.5015589	-104.5463676	point
BISHOP A08-655 LP Rev-2 (2309'FNL & 200'FWL,SEC.08)	6892.00	-1434.68	585.01	3255017.15	1426828.14	40.5014246	-104.5829648	point
BISHOP A08-655 BHL Rev-1 (2323'FSL & 200'FEL,SEC.09)	6896.00	-1278.42	10761.72	3265193.51	1426984.41	40.5015589	-104.5463676	point
BISHOP A08-655 LP Rev-1 (2309'FNL & 200'FWL,SEC.08)	6896.00	-1434.68	585.01	3255017.15	1426828.14	40.5014246	-104.5829648	point
DP 134 Hardlines (300'FNL/FSL & 200'FEL/FWL)	7000.00	0.03	-67.58	3254364.58	1428262.81	40.5053810	-104.5852580	polygon
2D Polygon: dimensions not calculated								

WELLPATH COMPOSITION - Ref Wellbore: BISHOP A08-655 AWB Ref Wellpath: BISHOP A08-655 AWP					
Start MD [ft]	End MD [ft]	Positional Uncertainty Model	Log Name/Comment	Wellbore	Survey Date
29.00	2015.00	OWSG MWD rev2 (MS+IFR1)	13.5" EVO Surface OWSG MWD rev2 (MS + IFR1) <130'-2015'>	BISHOP A08-655 AWB	1/1/2024
2015.00	17605.00	OWSG MWD rev2 (MS+IFR1)	8.5" ATC OWSG MWD rev2 (MS+IFR1) <2089'-17580'>	BISHOP A08-655 AWB	2/5/2024

REFERENCE WELLPATH IDENTIFICATION			
Operator	NOBLE ENERGY, INC	Well	BISHOP A08-655
Field	WELD COUNTY (NOBLE NAD 83 GRID)	API/Legal	05-123-52078
Facility	SEC.07-T06N-R64W	Wellbore	BISHOP A08-655 AWB
Slot	SLOT#04 BISHOP A08-655 (862'FNL & 372'FEL,SEC.07)		

WELLPATH COMMENTS				
MD [ft]	Inclination [°]	Azimuth [°]	TVD [ft]	Comment
130.00	0.230	222.940	130.00	First BH MWD Survey
7426.58	86.602	88.333	6890.78	Cross 200' Hardline (2325'FNL & 200'FWL,SEC.08)
7429.00	86.734	88.319	6890.92	Shallowest MD for Perf
17580.00	89.600	88.420	6886.29	Last BH MWD Survey
17605.00	89.600	88.420	6886.46	Projection to Bit (2321'FNL & 201'FEL,SEC.09)

COMMENTS
Wellpath general comments