

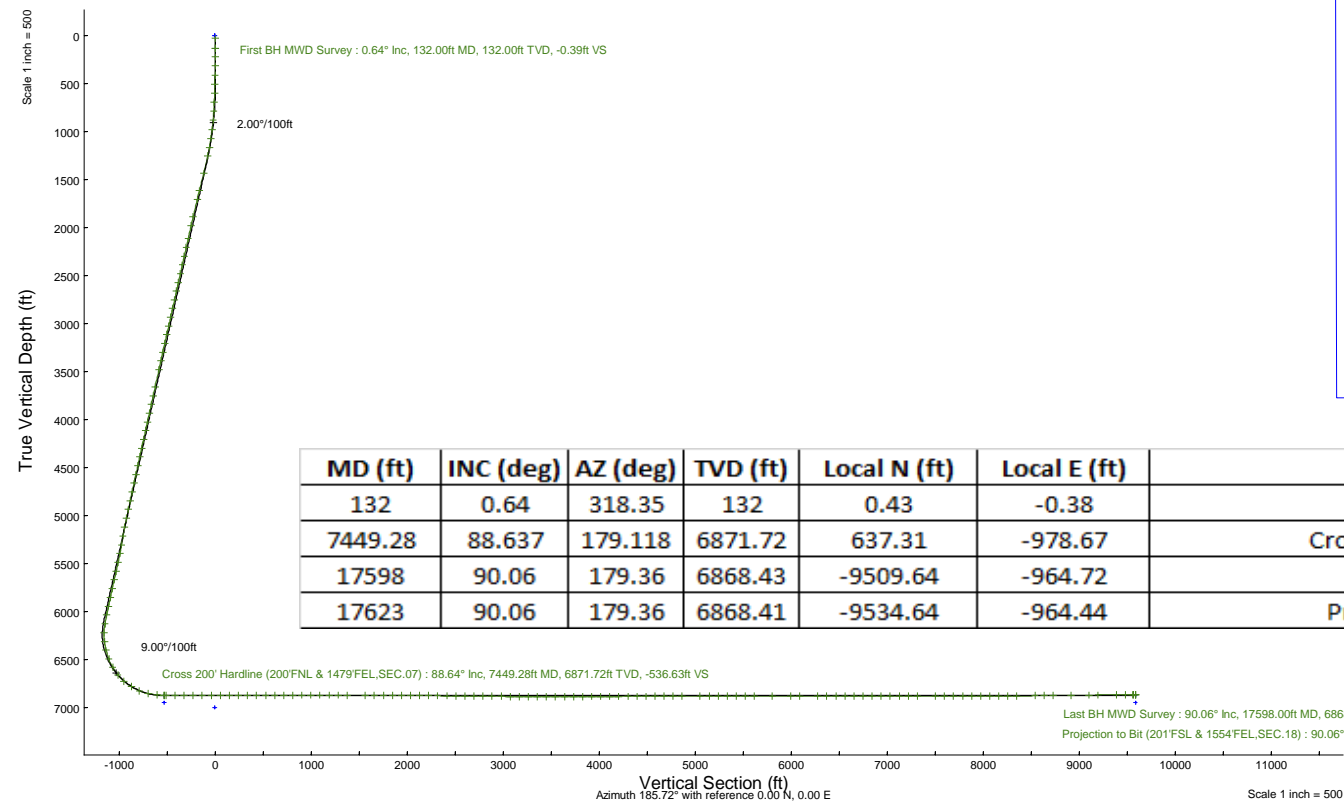
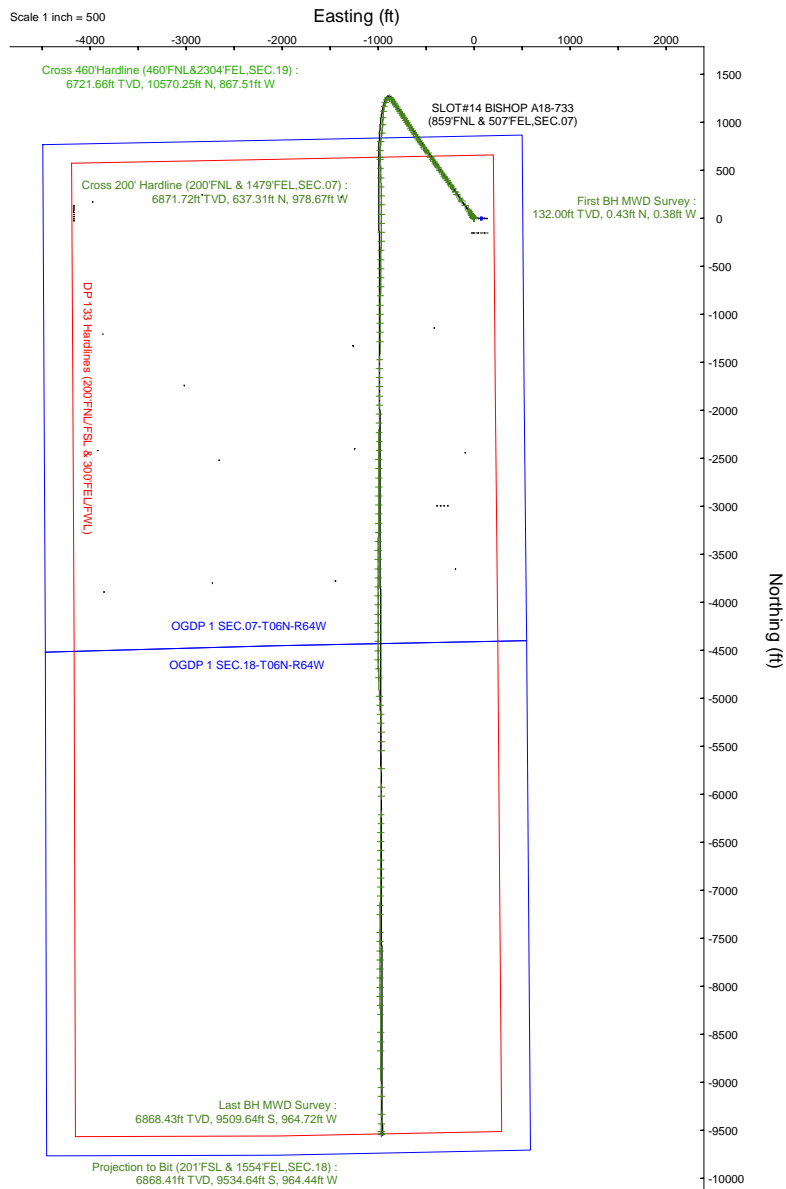
NOBLE ENERGY, INC

Location: COLORADO Slot: SLOT#14 BISHOP A18-733 (859'FNL & 507'FEL,SEC.07)
 Field: WELD COUNTY (NOBLE NAD 83 GRID) Well: BISHOP A18-733
 Facility: SEC.07-T06N-R64W Wellbore: BISHOP A18-733 PWB

Plot reference wellpath is BISHOP A18-733 (REV-D.0) PWP
 True vertical depths are referenced to RIG (4740'GL+29'KB@4769'RKB) (RKB)
 Reference wellpath measured depths are referenced to RIG (4740'GL+29'KB@4769'RKB) (RKB)
 RIG (4740'GL+29'KB@4769'RKB) (RKB) to Mean Sea Level: 4769 feet
 Mean Sea Level to Ground level (At Slot: SLOT#14 BISHOP A18-733 (859'FNL & 507'FEL,SEC.07)): 0 feet
 Offset wellpath MDs are referenced to each path's default MD datum
 Grid System: NAD83 / Lambert Colorado SP, Northern Zone (501), US feet
 North Reference: Grid north
 Scale: True distance
 Coordinates are in feet referenced to Slot
 Depths are in feet
 Created by: martsam01 on 2024-03-06; Database: WA_Denver

Location Information

Facility Name		Grid East (US ft)	Grid North (US ft)	Latitude	Longitude	
SEC.07-T06N-R64W		3254380.716	1428262.611	40°30'19.3680"N	104°35'6.7200"W	
Slot	Local N (ft)	Local E (ft)	Grid East (US ft)	Grid North (US ft)	Latitude	Longitude
SLOT#14 BISHOP A18-733 (859'FNL & 507'FEL,SEC.07)	0.23	-83.43	3254297.286	1428262.844	40°30'19.3788"N	104°35'7.8000"W
RIG (4740'GL+29'KB@4769'RKB) (RKB) to Ground level (At Slot: SLOT#14 BISHOP A18-733 (859'FNL & 507'FEL,SEC.07))				4769ft		
Mean Sea Level to Ground level (At Slot: SLOT#14 BISHOP A18-733 (859'FNL & 507'FEL,SEC.07))				0ft		
RIG (4740'GL+29'KB@4769'RKB) (RKB) to Mean Sea Level				4769ft		



MD (ft)	INC (deg)	AZ (deg)	TVD (ft)	Local N (ft)	Local E (ft)	Comment
132	0.64	318.35	132	0.43	-0.38	First BH MWD Survey
7449.28	88.637	179.118	6871.72	637.31	-978.67	Cross 200' Hardline (200'FNL & 1479'FEL,SEC.07)
17598	90.06	179.36	6868.43	-9509.64	-964.72	Last BH MWD Survey
17623	90.06	179.36	6868.41	-9534.64	-964.44	Projection to Bit (201'FSL & 1554'FEL,SEC.18)



Actual Wellpath Report

BISHOP A18-733 AWP

Page 1 of 7



REFERENCE WELLPATH IDENTIFICATION

Operator	NOBLE ENERGY, INC	Well	BISHOP A18-733
Field	WELD COUNTY (NOBLE NAD 83 GRID)	API/Legal	05-123-52072
Facility	SEC.07-T06N-R64W	Wellbore	BISHOP A18-733 AWB
Slot	SLOT#14 BISHOP A18-733 (859'FNL & 507'FEL,SEC.07)		

REPORT SETUP INFORMATION

Projection System	NAD83 / Lambert Colorado SP, Northern Zone (501), US feet	Software System	WellArchitect® 6.0
North Reference	Grid	User	Martsam01
Scale	0.999967	Report Generated	3/4/2024 at 6:16:16 PM
Convergence at slot	0.59° East	Database	WA_Denver

WELLPATH LOCATION

	Local coordinates		Grid coordinates		Geographic coordinates	
	North[ft]	East[ft]	Easting[US ft]	Northing[US ft]	Latitude	Longitude
Slot Location	0.23	-83.43	3254297.29	1428262.84	40.5053830°	-104.5855000°
Facility Reference Pt			3254380.72	1428262.61	40.5053800°	-104.5852000°
Field Reference Pt			3000000.00	4454105.15	48.7761986°	-105.5000000°

WELLPATH DATUM

Calculation method	Minimum curvature	RIG (4740'GL+29'KB@4769'RKB) (RKB) to Facility Vertical Datum	4769.00ft
Horizontal Reference Pt	Slot	RIG (4740'GL+29'KB@4769'RKB) (RKB) to Mean Sea Level	4769.00ft
Vertical Reference Pt	RIG (4740'GL+29'KB@4769'RKB) (RKB)	RIG (4740'GL+29'KB@4769'RKB) (RKB) to Ground Level at Slot (SLOT#14 BISHOP A18-733 (859'FNL & 507'FEL,SEC.07))	4769.00ft
MD Reference Pt	RIG (4740'GL+29'KB@4769'RKB) (RKB)	Section Origin	N 0.00, E 0.00 ft
Field Vertical Reference	Mean Sea Level	Section Azimuth	185.72°

REFERENCE WELLPATH IDENTIFICATION			
Operator	NOBLE ENERGY, INC	Well	BISHOP A18-733
Field	WELD COUNTY (NOBLE NAD 83 GRID)	API/Legal	05-123-52072
Facility	SEC.07-T06N-R64W	Wellbore	BISHOP A18-733 AWB
Slot	SLOT#14 BISHOP A18-733 (859'FNL & 507'FEL,SEC.07)		

WELLPATH DATA (176 stations) † = interpolated, ‡ = extrapolated station

MD [ft]	Inclination [°]	Azimuth [°]	TVD [ft]	Vert Sect [ft]	North [ft]	East [ft]	Latitude	Longitude	DLS [°/100ft]	Comments
0.00†	0.000	318.350	0.00	0.00	0.00	0.00	40.5053830	-104.5855000	0.00	
29.00	0.000	318.350	29.00	0.00	0.00	0.00	40.5053830	-104.5855000	0.00	
132.00	0.640	318.350	132.00	-0.39	0.43	-0.38	40.5053842	-104.5855014	0.62	First BH MWD Survey
223.00	0.890	334.340	222.99	-1.34	1.45	-1.03	40.5053870	-104.5855036	0.36	
316.00	1.070	335.320	315.98	-2.70	2.89	-1.70	40.5053910	-104.5855060	0.19	
411.00	1.650	320.990	410.95	-4.44	4.76	-2.93	40.5053961	-104.5855104	0.70	
506.00	1.660	330.690	505.91	-6.54	7.02	-4.47	40.5054024	-104.5855158	0.29	
600.00	1.910	329.140	599.86	-8.91	9.55	-5.94	40.5054094	-104.5855210	0.27	
695.00	3.300	326.310	694.76	-12.30	13.18	-8.27	40.5054194	-104.5855292	1.47	
790.00	4.750	325.720	789.53	-17.42	18.71	-12.00	40.5054347	-104.5855425	1.53	
884.00	6.830	322.200	883.04	-24.46	26.34	-17.62	40.5054558	-104.5855624	2.24	
979.00	9.300	325.810	977.10	-34.44	37.16	-25.39	40.5054857	-104.5855899	2.65	
1074.00	11.340	324.870	1070.55	-47.40	51.15	-35.08	40.5055244	-104.5856243	2.15	
1169.00	13.550	324.250	1163.32	-62.80	67.82	-46.96	40.5055705	-104.5856663	2.33	
1263.00	15.720	325.230	1254.26	-80.74	87.22	-60.66	40.5056241	-104.5857149	2.32	
1453.00	18.040	325.310	1436.06	-122.72	132.56	-92.09	40.5057494	-104.5858262	1.22	
1642.00	18.020	324.700	1615.78	-167.06	180.48	-125.63	40.5058819	-104.5859451	0.10	
1737.00	18.290	324.500	1706.05	-189.36	204.61	-142.78	40.5059486	-104.5860058	0.29	
1927.00	16.900	324.400	1887.16	-232.53	251.34	-176.17	40.5060778	-104.5861242	0.73	
2021.00	16.590	325.450	1977.17	-253.04	273.50	-191.74	40.5061391	-104.5861793	0.46	
2166.00	16.530	324.620	2116.16	-284.37	307.37	-215.42	40.5062327	-104.5862632	0.17	
2261.00	16.550	324.020	2207.23	-304.66	329.34	-231.19	40.5062935	-104.5863191	0.18	
2356.00	16.480	324.330	2298.31	-324.87	351.23	-247.00	40.5063540	-104.5863751	0.12	
2451.00	16.520	324.600	2389.40	-345.16	373.19	-262.68	40.5064147	-104.5864307	0.09	
2545.00	16.480	324.600	2479.53	-365.27	394.95	-278.15	40.5064749	-104.5864855	0.04	
2640.00	16.650	324.210	2570.58	-385.61	416.97	-293.91	40.5065358	-104.5865414	0.21	
2735.00	16.440	324.490	2661.65	-405.92	438.96	-309.68	40.5065966	-104.5865973	0.24	
2830.00	16.610	324.350	2752.73	-426.22	460.93	-325.40	40.5066573	-104.5866530	0.18	
2924.00	16.670	324.840	2842.79	-446.49	482.87	-341.00	40.5067180	-104.5867083	0.16	
3019.00	16.730	324.390	2933.78	-467.06	505.13	-356.80	40.5067795	-104.5867643	0.15	
3114.00	16.490	324.420	3024.82	-487.46	527.21	-372.61	40.5068406	-104.5868203	0.25	
3208.00	16.790	324.820	3114.88	-507.75	549.16	-388.19	40.5069013	-104.5868755	0.34	
3303.00	16.730	324.740	3205.85	-528.44	571.54	-403.99	40.5069631	-104.5869315	0.07	
3398.00	16.510	324.660	3296.88	-548.94	593.71	-419.70	40.5070244	-104.5869872	0.23	
3492.00	15.810	324.930	3387.16	-568.71	615.09	-434.78	40.5070835	-104.5870406	0.75	
3587.00	16.090	324.740	3478.51	-588.45	636.43	-449.81	40.5071425	-104.5870939	0.30	
3777.00	16.480	324.420	3660.88	-628.57	679.85	-480.69	40.5072626	-104.5872033	0.21	
3871.00	16.190	324.410	3751.09	-648.43	701.35	-496.08	40.5073220	-104.5872578	0.31	
3966.00	16.300	324.570	3842.29	-668.42	722.98	-511.51	40.5073818	-104.5873125	0.13	
4061.00	16.310	324.470	3933.47	-688.49	744.70	-527.00	40.5074419	-104.5873674	0.03	
4155.00	16.390	324.590	4023.67	-708.40	766.25	-542.35	40.5075015	-104.5874218	0.09	
4250.00	16.060	326.670	4114.89	-728.70	788.16	-557.34	40.5075620	-104.5874749	0.70	
4345.00	16.110	326.670	4206.17	-749.14	810.15	-571.80	40.5076228	-104.5875261	0.05	
4440.00	16.100	326.330	4297.44	-769.56	832.12	-586.34	40.5076835	-104.5875776	0.10	
4534.00	16.030	326.410	4387.77	-789.67	853.78	-600.75	40.5077434	-104.5876286	0.08	

REFERENCE WELLPATH IDENTIFICATION			
Operator	NOBLE ENERGY, INC	Well	BISHOP A18-733
Field	WELD COUNTY (NOBLE NAD 83 GRID)	API/Legal	05-123-52072
Facility	SEC.07-T06N-R64W	Wellbore	BISHOP A18-733 AWB
Slot	SLOT#14 BISHOP A18-733 (859'FNL & 507'FEL,SEC.07)		

WELLPATH DATA (176 stations) † = interpolated, ‡ = extrapolated station

MD [ft]	Inclination [°]	Azimuth [°]	TVD [ft]	Vert Sect [ft]	North [ft]	East [ft]	Latitude	Longitude	DLS [°/100ft]	Comments
4629.00	15.140	326.570	4479.28	-809.45	875.06	-614.84	40.5078022	-104.5876785	0.94	
4724.00	15.660	326.540	4570.87	-829.01	896.11	-628.75	40.5078603	-104.5877277	0.55	
4819.00	15.580	326.730	4662.36	-848.86	917.48	-642.81	40.5079194	-104.5877775	0.10	
4913.00	15.520	326.440	4752.92	-868.41	938.51	-656.69	40.5079775	-104.5878266	0.10	
5008.00	15.610	326.450	4844.43	-888.14	959.75	-670.78	40.5080362	-104.5878765	0.09	
5103.00	15.110	326.600	4936.04	-907.64	980.74	-684.66	40.5080942	-104.5879256	0.53	
5198.00	15.540	326.520	5027.66	-927.11	1001.69	-698.50	40.5081521	-104.5879746	0.45	
5292.00	15.640	326.620	5118.20	-946.70	1022.78	-712.42	40.5082104	-104.5880239	0.11	
5387.00	11.110	326.920	5210.60	-963.78	1041.15	-724.46	40.5082611	-104.5880665	4.77	
5482.00	11.040	326.870	5303.83	-978.00	1056.44	-734.43	40.5083034	-104.5881018	0.07	
5577.00	15.850	326.350	5396.20	-995.12	1074.86	-746.60	40.5083543	-104.5881449	5.06	
5671.00	15.790	326.490	5486.64	-1014.96	1096.21	-760.77	40.5084133	-104.5881951	0.08	
5766.00	15.150	326.630	5578.20	-1034.60	1117.36	-774.74	40.5084717	-104.5882445	0.67	
5861.00	16.090	326.330	5669.69	-1054.41	1138.68	-788.86	40.5085306	-104.5882945	0.99	
5956.00	15.640	326.460	5761.07	-1074.50	1160.31	-803.24	40.5085904	-104.5883454	0.48	
6050.00	14.850	326.650	5851.76	-1093.67	1180.93	-816.86	40.5086474	-104.5883936	0.84	
6145.00	15.890	326.500	5943.36	-1113.19	1201.95	-830.73	40.5087055	-104.5884427	1.10	
6240.00	15.210	326.320	6034.89	-1132.90	1223.16	-844.82	40.5087641	-104.5884926	0.72	
6335.00	15.520	317.020	6126.50	-1150.92	1242.84	-860.40	40.5088185	-104.5885479	2.61	
6430.00	12.180	285.080	6218.86	-1160.96	1254.76	-878.77	40.5088518	-104.5886135	8.64	
6524.00	12.320	241.200	6310.91	-1156.88	1252.51	-897.17	40.5088461	-104.5886798	9.68	
6619.00	16.630	212.080	6403.00	-1138.92	1236.08	-913.30	40.5088015	-104.5887384	8.77	
6714.00	20.210	199.370	6493.15	-1110.78	1209.06	-925.97	40.5087277	-104.5887849	5.64	
6809.00	29.730	189.400	6579.21	-1071.22	1170.23	-935.29	40.5086214	-104.5888199	10.92	
6904.00	39.070	185.570	6657.52	-1017.65	1117.07	-942.06	40.5084756	-104.5888462	10.09	
6998.00	49.080	184.310	6724.97	-952.35	1052.01	-947.62	40.5082972	-104.5888686	10.69	
7093.00	57.670	184.210	6781.59	-876.21	976.05	-953.27	40.5080889	-104.5888917	9.04	
7188.00	67.630	185.680	6825.18	-791.94	892.09	-960.58	40.5078587	-104.5889211	10.57	
7283.00	77.900	186.420	6853.29	-701.33	801.99	-970.15	40.5076116	-104.5889588	10.84	
7377.00	84.690	182.720	6867.51	-608.50	709.43	-977.52	40.5073578	-104.5889888	8.20	
7449.28†	88.637	179.118	6871.72	-536.63	637.31	-978.67	40.5071599	-104.5889956	7.39	Cross 200' Hardline (200'FNL & 1479'FEL,SEC.07)
7452.00†	88.786	178.983	6871.78	-533.93	634.59	-978.63	40.5071524	-104.5889955	7.39	Shallowest MD for Perf
7472.00	89.880	177.990	6872.01	-514.09	614.60	-978.10	40.5070975	-104.5889943	7.39	
7567.00	89.720	177.610	6872.35	-419.99	519.67	-974.45	40.5068369	-104.5889847	0.43	
7662.00	90.000	177.540	6872.58	-325.95	424.76	-970.43	40.5065763	-104.5889738	0.30	
7756.00	89.690	179.570	6872.83	-232.69	330.79	-968.06	40.5063183	-104.5889687	2.18	
7851.00	89.970	179.880	6873.11	-138.21	235.79	-967.61	40.5060575	-104.5889706	0.44	
7946.00	89.780	179.020	6873.32	-43.78	140.80	-966.69	40.5057968	-104.5889708	0.93	
8041.00	90.060	179.650	6873.45	50.63	45.81	-965.59	40.5055360	-104.5889704	0.73	
8136.00	89.850	179.330	6873.53	145.07	-49.19	-964.75	40.5052752	-104.5889709	0.40	
8230.00	91.230	181.710	6872.64	238.67	-143.17	-965.60	40.5050173	-104.5889774	2.93	
8325.00	89.820	180.710	6871.77	333.37	-238.14	-967.60	40.5047567	-104.5889881	1.82	
8420.00	89.750	180.630	6872.13	428.00	-333.14	-968.72	40.5044960	-104.5889956	0.11	
8515.00	90.000	180.470	6872.34	522.61	-428.13	-969.63	40.5042353	-104.5890024	0.31	
8609.00	90.120	181.250	6872.24	616.27	-522.12	-971.04	40.5039774	-104.5890110	0.84	

REFERENCE WELLPATH IDENTIFICATION			
Operator	NOBLE ENERGY, INC	Well	BISHOP A18-733
Field	WELD COUNTY (NOBLE NAD 83 GRID)	API/Legal	05-123-52072
Facility	SEC.07-T06N-R64W	Wellbore	BISHOP A18-733 AWB
Slot	SLOT#14 BISHOP A18-733 (859'FNL & 507'FEL,SEC.07)		

WELLPATH DATA (176 stations)

MD [ft]	Inclination [°]	Azimuth [°]	TVD [ft]	Vert Sect [ft]	North [ft]	East [ft]	Latitude	Longitude	DLS ["/100ft]	Comments
8704.00	90.550	180.860	6871.68	710.96	-617.10	-972.79	40.5037167	-104.5890207	0.61	
8799.00	90.340	180.800	6870.94	805.61	-712.09	-974.16	40.5034561	-104.5890292	0.23	
8894.00	90.150	180.780	6870.54	900.26	-807.08	-975.47	40.5031954	-104.5890374	0.20	
8988.00	90.340	180.820	6870.14	993.91	-901.07	-976.79	40.5029374	-104.5890456	0.21	
9083.00	89.660	180.670	6870.14	1088.55	-996.06	-978.02	40.5026767	-104.5890536	0.73	
9178.00	89.940	180.580	6870.47	1183.18	-1091.05	-979.06	40.5024160	-104.5890608	0.31	
9273.00	90.000	180.360	6870.52	1277.78	-1186.05	-979.84	40.5021553	-104.5890671	0.24	
9368.00	89.600	180.490	6870.85	1372.37	-1281.05	-980.54	40.5018946	-104.5890732	0.44	
9557.00	89.750	180.850	6871.92	1560.63	-1470.03	-982.75	40.5013760	-104.5890881	0.21	
9652.00	89.480	180.450	6872.56	1655.26	-1565.02	-983.83	40.5011153	-104.5890955	0.51	
9746.00	90.030	181.060	6872.96	1748.91	-1659.01	-985.07	40.5008573	-104.5891034	0.87	
9841.00	89.780	180.560	6873.12	1843.56	-1754.00	-986.41	40.5005966	-104.5891117	0.59	
9936.00	89.750	179.680	6873.51	1938.10	-1849.00	-986.61	40.5003359	-104.5891160	0.93	
10031.00	89.850	181.150	6873.84	2032.69	-1943.99	-987.30	40.5000752	-104.5891219	1.55	
10125.00	89.570	180.240	6874.32	2126.33	-2037.99	-988.44	40.4998173	-104.5891295	1.01	
10220.00	89.230	179.610	6875.31	2220.84	-2132.98	-988.31	40.4995565	-104.5891326	0.75	
10315.00	89.660	180.680	6876.23	2315.38	-2227.97	-988.55	40.4992958	-104.5891369	1.21	
10409.00	89.350	179.680	6877.04	2408.94	-2321.97	-988.85	40.4990378	-104.5891415	1.11	
10504.00	89.420	180.510	6878.06	2503.48	-2416.96	-989.01	40.4987771	-104.5891455	0.88	
10599.00	90.120	180.690	6878.44	2598.10	-2511.95	-990.00	40.4985164	-104.5891526	0.76	
10694.00	88.490	179.760	6879.60	2692.65	-2606.94	-990.37	40.4982557	-104.5891575	1.98	
10788.00	90.120	180.480	6880.74	2786.19	-2700.93	-990.57	40.4979977	-104.5891617	1.90	
10883.00	89.940	180.670	6880.69	2880.81	-2795.93	-991.52	40.4977370	-104.5891686	0.28	
10978.00	88.400	180.480	6882.06	2975.41	-2890.91	-992.48	40.4974763	-104.5891755	1.63	
11073.00	88.090	180.240	6884.97	3069.95	-2985.86	-993.07	40.4972157	-104.5891812	0.41	
11167.00	90.310	180.320	6886.28	3163.51	-3079.85	-993.53	40.4969578	-104.5891863	2.36	
11262.00	89.970	180.490	6886.05	3258.11	-3174.84	-994.21	40.4966971	-104.5891922	0.40	
11356.00	90.430	180.350	6885.72	3351.70	-3268.84	-994.89	40.4964391	-104.5891982	0.51	
11451.00	90.220	180.480	6885.18	3446.30	-3363.84	-995.58	40.4961784	-104.5892042	0.26	
11546.00	90.180	180.290	6884.85	3540.88	-3458.83	-996.22	40.4959177	-104.5892100	0.20	
11641.00	90.180	180.290	6884.55	3635.46	-3553.83	-996.70	40.4956569	-104.5892152	0.00	
11736.00	90.060	180.530	6884.36	3730.05	-3648.83	-997.38	40.4953962	-104.5892212	0.28	
11830.00	90.180	180.650	6884.16	3823.67	-3742.82	-998.35	40.4951382	-104.5892281	0.18	
11925.00	90.180	180.350	6883.86	3918.28	-3837.82	-999.18	40.4948775	-104.5892346	0.32	
12020.00	90.220	180.480	6883.53	4012.87	-3932.82	-999.87	40.4946168	-104.5892406	0.14	
12114.00	90.120	180.410	6883.25	4106.47	-4026.81	-1000.60	40.4943588	-104.5892467	0.13	
12209.00	90.030	180.100	6883.13	4201.04	-4121.81	-1001.02	40.4940981	-104.5892517	0.34	
12304.00	90.180	179.320	6882.95	4295.52	-4216.81	-1000.54	40.4938374	-104.5892535	0.84	
12399.00	90.150	179.400	6882.68	4389.93	-4311.80	-999.48	40.4935766	-104.5892532	0.09	
12494.00	90.250	179.700	6882.35	4484.38	-4406.80	-998.73	40.4933158	-104.5892540	0.33	
12589.00	90.090	179.450	6882.06	4578.84	-4501.80	-998.03	40.4930551	-104.5892550	0.31	
12684.00	90.150	179.180	6881.87	4673.24	-4596.79	-996.89	40.4927943	-104.5892544	0.29	
12778.00	90.000	178.810	6881.74	4766.60	-4690.78	-995.24	40.4925363	-104.5892519	0.42	
12873.00	90.220	179.450	6881.56	4860.97	-4785.76	-993.80	40.4922756	-104.5892503	0.71	
13063.00	89.880	174.160	6881.39	5048.61	-4975.40	-983.21	40.4917548	-104.5892192	2.79	

REFERENCE WELLPATH IDENTIFICATION			
Operator	NOBLE ENERGY, INC	Well	BISHOP A18-733
Field	WELD COUNTY (NOBLE NAD 83 GRID)	API/Legal	05-123-52072
Facility	SEC.07-T06N-R64W	Wellbore	BISHOP A18-733 AWB
Slot	SLOT#14 BISHOP A18-733 (859'FNL & 507'FEL,SEC.07)		

WELLPATH DATA (176 stations) † = interpolated, ‡ = extrapolated station

MD [ft]	Inclination [°]	Azimuth [°]	TVD [ft]	Vert Sect [ft]	North [ft]	East [ft]	Latitude	Longitude	DLS [°/100ft]	Comments
13158.00	90.270	178.490	6881.27	5142.31	-5070.18	-977.13	40.4914944	-104.5892008	4.58	
13252.00	90.050	177.560	6881.01	5235.46	-5164.12	-973.89	40.4912365	-104.5891926	1.02	
13347.00	90.020	179.570	6880.95	5329.72	-5259.09	-971.51	40.4909758	-104.5891876	2.12	
13442.00	90.060	175.560	6880.88	5423.74	-5353.99	-967.47	40.4907152	-104.5891766	4.22	
13537.00	90.250	179.390	6880.63	5517.74	-5448.87	-963.29	40.4904546	-104.5891651	4.04	
13632.00	90.160	180.530	6880.29	5612.26	-5543.87	-963.22	40.4901939	-104.5891683	1.20	
13822.00	89.910	180.240	6880.17	5801.44	-5733.87	-964.50	40.4896724	-104.5891799	0.20	
14012.00	90.130	180.650	6880.10	5990.63	-5923.86	-965.97	40.4891510	-104.5891923	0.24	
14106.00	90.220	180.470	6879.82	6084.25	-6017.86	-966.89	40.4888930	-104.5891990	0.21	
14296.00	90.030	180.430	6879.40	6273.45	-6207.85	-968.39	40.4883716	-104.5892114	0.10	
14391.00	90.060	180.400	6879.33	6368.04	-6302.85	-969.07	40.4881109	-104.5892174	0.04	
14486.00	89.760	180.500	6879.48	6462.64	-6397.84	-969.82	40.4878502	-104.5892236	0.33	
14580.00	90.090	180.460	6879.60	6556.25	-6491.84	-970.61	40.4875922	-104.5892299	0.35	
14675.00	90.130	180.500	6879.42	6650.85	-6586.84	-971.40	40.4873315	-104.5892362	0.06	
14770.00	90.030	180.320	6879.28	6745.44	-6681.83	-972.08	40.4870708	-104.5892422	0.22	
14865.00	90.000	180.370	6879.26	6840.02	-6776.83	-972.65	40.4868100	-104.5892478	0.06	
14960.00	89.880	180.250	6879.36	6934.60	-6871.83	-973.17	40.4865493	-104.5892531	0.18	
15054.00	90.090	180.460	6879.38	7028.19	-6965.83	-973.75	40.4862913	-104.5892587	0.32	
15149.00	89.970	180.560	6879.33	7122.80	-7060.83	-974.60	40.4860306	-104.5892652	0.16	
15244.00	90.030	180.420	6879.33	7217.40	-7155.82	-975.41	40.4857699	-104.5892717	0.16	
15338.00	89.940	180.550	6879.36	7311.01	-7249.82	-976.20	40.4855119	-104.5892780	0.17	
15527.00	90.130	180.460	6879.24	7499.23	-7438.81	-977.87	40.4849932	-104.5892910	0.11	
15622.00	89.970	180.450	6879.16	7593.83	-7533.81	-978.62	40.4847325	-104.5892972	0.17	
15717.00	89.910	180.410	6879.26	7688.42	-7628.81	-979.34	40.4844718	-104.5893032	0.08	
15812.00	90.000	180.460	6879.33	7783.02	-7723.80	-980.06	40.4842111	-104.5893093	0.11	
15907.00	90.030	179.430	6879.31	7877.54	-7818.80	-979.97	40.4839503	-104.5893125	1.08	
16001.00	90.000	179.370	6879.28	7970.96	-7912.80	-978.98	40.4836923	-104.5893125	0.07	
16096.00	90.060	179.370	6879.24	8065.38	-8007.79	-977.94	40.4834316	-104.5893122	0.06	
16190.00	90.120	179.430	6879.09	8158.81	-8101.79	-976.95	40.4831735	-104.5893121	0.09	
16285.00	90.030	179.100	6878.96	8253.21	-8196.78	-975.74	40.4829128	-104.5893113	0.36	
16380.00	89.970	179.510	6878.96	8347.61	-8291.77	-974.58	40.4826520	-104.5893106	0.44	
16569.00	92.190	179.740	6875.40	8535.50	-8480.72	-973.35	40.4821334	-104.5893132	1.18	
16664.00	90.310	179.670	6873.33	8629.95	-8575.69	-972.86	40.4818727	-104.5893149	1.98	
16759.00	90.250	179.450	6872.86	8724.40	-8670.69	-972.13	40.4816119	-104.5893158	0.24	
16948.00	90.650	179.250	6871.38	8912.23	-8859.67	-969.98	40.4810932	-104.5893151	0.24	
17138.00	90.120	179.690	6870.10	9101.10	-9049.66	-968.23	40.4805716	-104.5893158	0.36	
17232.00	90.280	179.380	6869.78	9194.55	-9143.65	-967.46	40.4803136	-104.5893165	0.37	
17422.00	90.280	179.930	6868.85	9383.48	-9333.65	-966.32	40.4797921	-104.5893194	0.29	
17517.00	90.090	179.290	6868.54	9477.94	-9428.64	-965.67	40.4795314	-104.5893206	0.70	
17598.00	90.060	179.360	6868.43	9558.44	-9509.64	-964.72	40.4793090	-104.5893201	0.09	Last BH MWD Survey
17623.00‡	90.060	179.360	6868.41	9583.28	-9534.64	-964.44	40.4792404	-104.5893200	0.00	Projection to Bit (201'FSL & 1554'FEL,SEC.18)

REFERENCE WELLPATH IDENTIFICATION			
Operator	NOBLE ENERGY, INC	Well	BISHOP A18-733
Field	WELD COUNTY (NOBLE NAD 83 GRID)	API/Legal	05-123-52072
Facility	SEC.07-T06N-R64W	Wellbore	BISHOP A18-733 AWB
Slot	SLOT#14 BISHOP A18-733 (859'FNL & 507'FEL,SEC.07)		

TARGETS								
Name	TVD [ft]	North [ft]	East [ft]	Grid East [US ft]	Grid North [US ft]	Latitude	Longitude	Shape
OGDP 1 SEC.07-T06N-R64W	-3.00	-0.23	83.43	3254380.72	1428262.61	40.5053800	-104.5852000	polygon
2D Polygon: dimensions not calculated								
OGDP 1 SEC.18-T06N-R64W	-3.00	-0.23	83.43	3254380.72	1428262.61	40.5053800	-104.5852000	polygon
2D Polygon: dimensions not calculated								
BISHOP A18-733 BHL Rev-2 (200'FSL & 1544'FEL,SEC.18)	6876.00	-9535.37	-954.84	3253342.48	1418727.81	40.4792381	-104.5892856	point
BISHOP A18-733 LP Rev-2 (200'FNL & 1492'FEL,SEC.07)	6876.00	637.31	-991.33	3253305.99	1428900.13	40.5071602	-104.5890411	point
BISHOP A18-733 BHL Rev-1 (200'FSL & 1544'FEL,SEC.18)	6949.00	-9535.37	-954.84	3253342.48	1418727.81	40.4792381	-104.5892856	point
BISHOP A18-733 LP Rev-1 (200'FNL & 1492'FEL,SEC.07)	6949.00	637.31	-991.33	3253305.99	1428900.13	40.5071602	-104.5890411	point
DP 133 Hardlines (200'FNL/FSL & 300'FEL/FWL)	6998.00	-0.03	67.30	3254364.58	1428262.81	40.5053810	-104.5852580	polygon
2D Polygon: dimensions not calculated								

WELLPATH COMPOSITION - Ref Wellbore: BISHOP A18-733 AWB Ref Wellpath: BISHOP A18-733 AWP					
Start MD [ft]	End MD [ft]	Positional Uncertainty Model	Log Name/Comment	Wellbore	Survey Date
29.00	2021.00	OWSG MWD rev2 (MS+IFR1)	13.5" EVO Surface OWSG MWD rev2 (MS + IFR1) <132'-2021'>	BISHOP A18-733 AWB	1/1/2024
2021.00	17623.00	OWSG MWD rev2 (MS+IFR1)	8.5" Lucida OWSG MWD rev2 (MS+IFR1) <2166'-17623'>	BISHOP A18-733 AWB	1/8/2024

REFERENCE WELLPATH IDENTIFICATION			
Operator	NOBLE ENERGY, INC	Well	BISHOP A18-733
Field	WELD COUNTY (NOBLE NAD 83 GRID)	API/Legal	05-123-52072
Facility	SEC.07-T06N-R64W	Wellbore	BISHOP A18-733 AWB
Slot	SLOT#14 BISHOP A18-733 (859'FNL & 507'FEL,SEC.07)		

WELLPATH COMMENTS				
MD [ft]	Inclination [°]	Azimuth [°]	TVD [ft]	Comment
132.00	0.640	318.350	132.00	First BH MWD Survey
7449.28	88.637	179.118	6871.72	Cross 200' Hardline (200'FNL & 1479'FEL,SEC.07)
7452.00	88.786	178.983	6871.78	Shallowest MD for Perf
17598.00	90.060	179.360	6868.43	Last BH MWD Survey
17623.00	90.060	179.360	6868.41	Projection to Bit (201'FSL & 1554'FEL,SEC.18)