

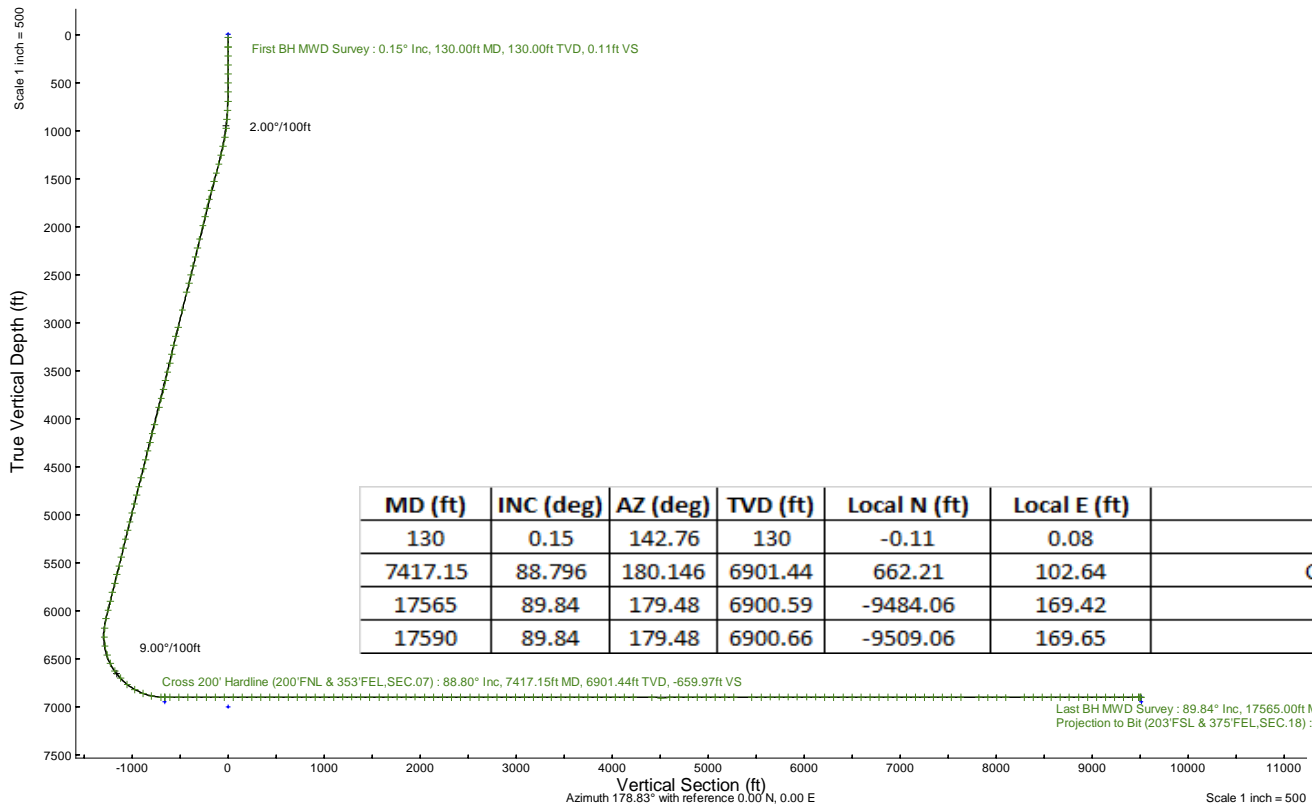
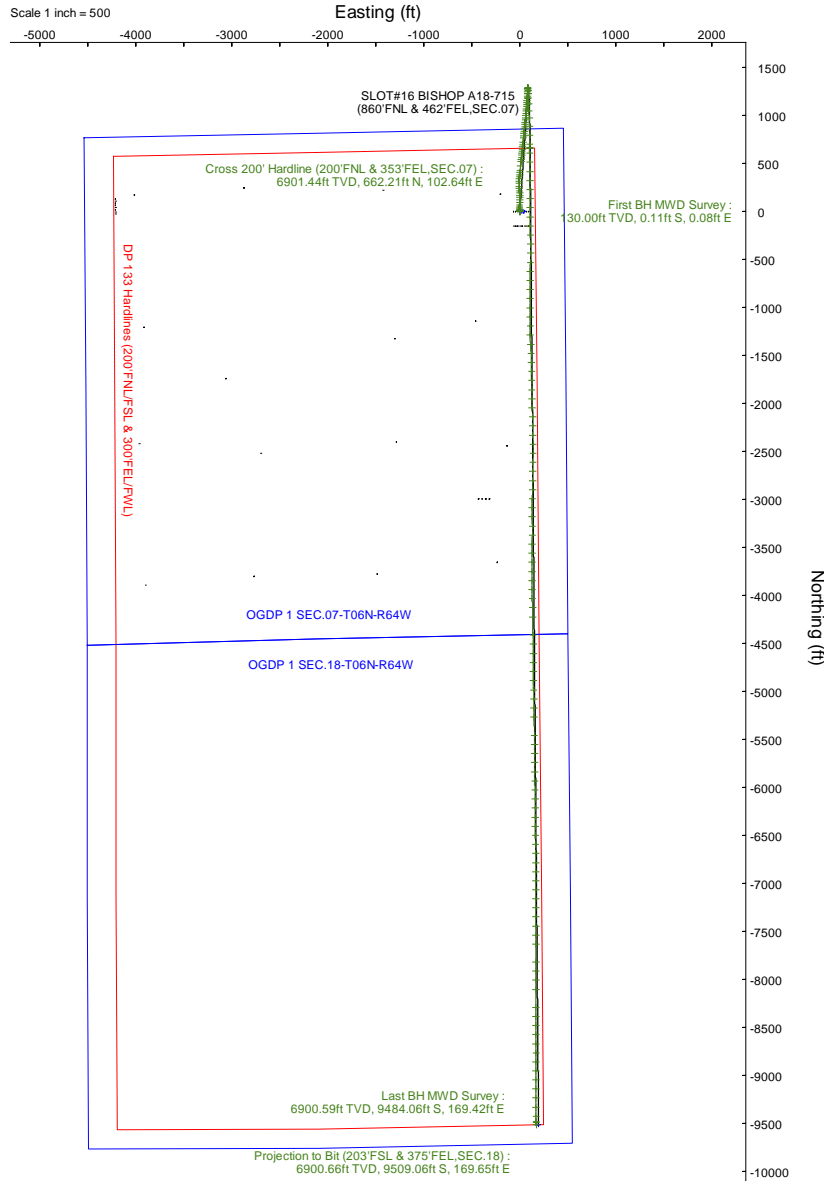
# NOBLE ENERGY, INC

Location: COLORADO Slot: SLOT#16 BISHOP A18-715 (860'FNL & 462'FEL, SEC.07)  
 Field: WELD COUNTY (NOBLE NAD 83 GRID) Well: BISHOP A18-715  
 Facility: SEC.07-T06N-R64W Wellbore: BISHOP A18-715 PWB

Plot reference wellpath is BISHOP A18-715 (REV-D.0) PWP  
 True vertical depths are referenced to RIG (4741'GL+29'KB@4770'RKB) (RKB)  
 Reference wellpath measured depths are referenced to RIG (4741'GL+29'KB@4770'RKB) (RKB)  
 RIG (4741'GL+29'KB@4770'RKB) (RKB) to Mean Sea Level: 4770 feet  
 Mean Sea Level to Ground level (At Slot: SLOT#16 BISHOP A18-715 (860'FNL & 462'FEL, SEC.07)): 0 feet  
 Offset wellpath MDs are referenced to each path's default MD datum  
 Grid System: NAD83 / Lambert Colorado SP, Northern Zone (501), US feet  
 North Reference: Grid north  
 Scale: True distance  
 Coordinates are in feet referenced to Slot  
 Depths are in feet  
 Created by: martsam01 on 2024-03-06; Database: WA\_Denver

### Location Information

Facility Name		Grid East (US ft)	Grid North (US ft)	Latitude	Longitude	
SEC.07-T06N-R64W		3254380.716	1428262.611	40°30'19.3680"N	104°35'6.7200"W	
Slot	Local N (ft)	Local E (ft)	Grid East (US ft)	Grid North (US ft)	Latitude	Longitude
SLOT#16 BISHOP A18-715 (860'FNL & 462'FEL, SEC.07)	0.33	-38.66	3254342.058	1428262.941	40°30'19.3752"N	104°35'7.2204"W
RIG (4741'GL+29'KB@4770'RKB) (RKB) to Ground level (At Slot: SLOT#16 BISHOP A18-715 (860'FNL & 462'FEL, SEC.07))					4770ft	
Mean Sea Level to Ground level (At Slot: SLOT#16 BISHOP A18-715 (860'FNL & 462'FEL, SEC.07))					0ft	
RIG (4741'GL+29'KB@4770'RKB) (RKB) to Mean Sea Level					4770ft	



MD (ft)	INC (deg)	AZ (deg)	TVD (ft)	Local N (ft)	Local E (ft)	Comment
130	0.15	142.76	130	-0.11	0.08	First BH MWD Survey
7417.15	88.796	180.146	6901.44	662.21	102.64	Cross 200' Hardline (200'FNL & 353'FEL, SEC.07)
17565	89.84	179.48	6900.59	-9484.06	169.42	Last BH MWD Survey
17590	89.84	179.48	6900.66	-9509.06	169.65	Projection to Bit (203'FSL & 375'FEL, SEC.18)

Scale 1 inch = 500



# Actual Wellpath Report

BISHOP A18-715 AWP

Page 1 of 7



## REFERENCE WELLPATH IDENTIFICATION

Operator	NOBLE ENERGY, INC	Well	BISHOP A18-715
Field	WELD COUNTY (NOBLE NAD 83 GRID)	API/Legal	05-123-52074
Facility	SEC.07-T06N-R64W	Wellbore	BISHOP A18-715 AWB
Slot	SLOT#16 BISHOP A18-715 (860'FNL & 462'FEL,SEC.07)		

## REPORT SETUP INFORMATION

Projection System	NAD83 / Lambert Colorado SP, Northern Zone (501), US feet	Software System	WellArchitect® 6.0
North Reference	Grid	User	Martsam01
Scale	0.999967	Report Generated	3/4/2024 at 6:19:57 PM
Convergence at slot	0.59° East	Database	WA_Denver

## WELLPATH LOCATION

	Local coordinates		Grid coordinates		Geographic coordinates	
	North[ft]	East[ft]	Easting[US ft]	Northing[US ft]	Latitude	Longitude
Slot Location	0.33	-38.66	3254342.06	1428262.94	40.5053820°	-104.5853390°
Facility Reference Pt			3254380.72	1428262.61	40.5053800°	-104.5852000°
Field Reference Pt			3000000.00	4454105.15	48.7761986°	-105.5000000°

## WELLPATH DATUM

Calculation method	Minimum curvature	RIG (4741'GL+29'KB@4770'RKB) (RKB) to Facility Vertical Datum	4770.00ft
Horizontal Reference Pt	Slot	RIG (4741'GL+29'KB@4770'RKB) (RKB) to Mean Sea Level	4770.00ft
Vertical Reference Pt	RIG (4741'GL+29'KB@4770'RKB) (RKB)	RIG (4741'GL+29'KB@4770'RKB) (RKB) to Ground Level at Slot (SLOT#16 BISHOP A18-715 (860'FNL & 462'FEL,SEC.07))	4770.00ft
MD Reference Pt	RIG (4741'GL+29'KB@4770'RKB) (RKB)	Section Origin	N 0.00, E 0.00 ft
Field Vertical Reference	Mean Sea Level	Section Azimuth	178.83°

REFERENCE WELLPATH IDENTIFICATION			
Operator	NOBLE ENERGY, INC	Well	BISHOP A18-715
Field	WELD COUNTY (NOBLE NAD 83 GRID)	API/Legal	05-123-52074
Facility	SEC.07-T06N-R64W	Wellbore	BISHOP A18-715 AWB
Slot	SLOT#16 BISHOP A18-715 (860'FNL & 462'FEL,SEC.07)		

**WELLPATH DATA (183 stations)** † = interpolated, ‡ = extrapolated station

MD [ft]	Inclination [°]	Azimuth [°]	TVD [ft]	Vert Sect [ft]	North [ft]	East [ft]	Latitude	Longitude	DLS ["/100ft]	Comments
0.00†	0.000	142.760	0.00	0.00	0.00	0.00	40.5053820	-104.5853390	0.00	
29.00	0.000	142.760	29.00	0.00	0.00	0.00	40.5053820	-104.5853390	0.00	
130.00	0.150	142.760	130.00	0.11	-0.11	0.08	40.5053817	-104.5853387	0.15	First BH MWD Survey
221.00	0.220	220.230	221.00	0.33	-0.33	0.04	40.5053811	-104.5853389	0.26	
314.00	0.040	61.460	314.00	0.45	-0.45	-0.05	40.5053808	-104.5853392	0.28	
409.00	0.070	265.630	409.00	0.44	-0.44	-0.08	40.5053808	-104.5853393	0.11	
504.00	0.180	282.920	504.00	0.41	-0.41	-0.28	40.5053809	-104.5853400	0.12	
598.00	0.610	266.920	598.00	0.39	-0.41	-0.92	40.5053809	-104.5853423	0.47	
693.00	1.080	340.790	692.99	-0.45	0.41	-1.72	40.5053832	-104.5853452	1.14	
788.00	2.590	348.670	787.94	-3.41	3.36	-2.44	40.5053913	-104.5853476	1.61	
882.00	4.680	354.190	881.74	-9.32	9.26	-3.24	40.5054075	-104.5853503	2.25	
977.00	7.180	358.500	976.23	-19.12	19.05	-3.79	40.5054344	-104.5853519	2.67	
1072.00	9.500	359.940	1070.22	-32.90	32.83	-3.96	40.5054722	-104.5853520	2.45	
1167.00	11.880	0.790	1163.56	-50.52	50.45	-3.83	40.5055206	-104.5853509	2.51	
1261.00	14.100	1.580	1255.15	-71.62	71.57	-3.38	40.5055785	-104.5853485	2.37	
1356.00	15.090	1.220	1347.08	-95.54	95.50	-2.80	40.5056442	-104.5853455	1.05	
1451.00	15.570	1.720	1438.70	-120.63	120.61	-2.15	40.5057131	-104.5853423	0.52	
1546.00	16.170	1.030	1530.08	-146.58	146.58	-1.53	40.5057844	-104.5853391	0.66	
1640.00	14.770	357.970	1620.68	-171.64	171.64	-1.72	40.5058532	-104.5853388	1.72	
1735.00	14.230	356.890	1712.65	-195.42	195.40	-2.78	40.5059184	-104.5853418	0.64	
1830.00	13.410	354.940	1804.90	-218.08	218.04	-4.39	40.5059806	-104.5853467	0.99	
1925.00	13.270	353.140	1897.34	-239.92	239.83	-6.66	40.5060405	-104.5853541	0.46	
2019.00	13.350	354.940	1988.81	-261.48	261.36	-8.91	40.5060996	-104.5853613	0.45	
2165.00	13.410	3.350	2130.86	-295.18	295.05	-9.41	40.5061921	-104.5853619	1.33	
2260.00	13.640	3.720	2223.23	-317.32	317.23	-8.03	40.5062529	-104.5853561	0.26	
2355.00	13.860	5.510	2315.51	-339.79	339.73	-6.22	40.5063146	-104.5853487	0.50	
2450.00	13.750	5.830	2407.76	-362.29	362.29	-3.98	40.5063765	-104.5853399	0.14	
2544.00	13.830	5.550	2499.05	-384.54	384.58	-1.75	40.5064376	-104.5853310	0.11	
2639.00	14.000	5.770	2591.26	-407.22	407.32	0.50	40.5064999	-104.5853221	0.19	
2734.00	13.830	6.290	2683.48	-429.89	430.04	2.90	40.5065622	-104.5853126	0.22	
2923.00	13.950	6.170	2866.95	-474.88	475.14	7.82	40.5066859	-104.5852933	0.07	
3113.00	13.810	5.130	3051.40	-520.13	520.49	12.31	40.5068103	-104.5852754	0.15	
3207.00	14.000	5.900	3142.65	-542.57	542.98	14.48	40.5068719	-104.5852668	0.28	
3302.00	13.580	5.970	3234.91	-565.04	565.50	16.82	40.5069337	-104.5852575	0.44	
3397.00	11.580	5.400	3327.62	-585.58	586.09	18.88	40.5069901	-104.5852494	2.11	
3491.00	14.260	5.740	3419.23	-606.45	607.01	20.93	40.5070475	-104.5852412	2.85	
3586.00	13.100	6.210	3511.54	-628.74	629.35	23.26	40.5071087	-104.5852320	1.23	
3681.00	12.780	5.740	3604.13	-649.85	650.51	25.48	40.5071667	-104.5852233	0.35	
3775.00	14.620	5.350	3695.45	-671.96	672.67	27.62	40.5072275	-104.5852147	1.96	
3870.00	14.410	5.890	3787.42	-695.60	696.36	29.95	40.5072925	-104.5852055	0.26	
3965.00	14.340	5.620	3879.44	-719.02	719.83	32.32	40.5073568	-104.5851961	0.10	
4154.00	14.360	5.870	4062.54	-765.52	766.44	37.01	40.5074846	-104.5851775	0.03	
4249.00	14.280	6.060	4154.59	-788.83	789.80	39.45	40.5075487	-104.5851678	0.10	
4344.00	14.230	5.850	4246.67	-812.05	813.07	41.88	40.5076125	-104.5851583	0.08	
4438.00	14.180	6.040	4337.79	-834.94	836.01	44.27	40.5076754	-104.5851488	0.07	

REFERENCE WELLPATH IDENTIFICATION			
Operator	NOBLE ENERGY, INC	Well	BISHOP A18-715
Field	WELD COUNTY (NOBLE NAD 83 GRID)	API/Legal	05-123-52074
Facility	SEC.07-T06N-R64W	Wellbore	BISHOP A18-715 AWB
Slot	SLOT#16 BISHOP A18-715 (860'FNL & 462'FEL,SEC.07)		

**WELLPATH DATA (183 stations)** † = interpolated, ‡ = extrapolated station

MD [ft]	Inclination [°]	Azimuth [°]	TVD [ft]	Vert Sect [ft]	North [ft]	East [ft]	Latitude	Longitude	DLS [°/100ft]	Comments
4533.00	14.150	6.260	4429.90	-857.99	859.13	46.76	40.5077387	-104.5851390	0.06	
4628.00	14.730	5.910	4521.90	-881.49	882.68	49.27	40.5078033	-104.5851291	0.62	
4723.00	14.630	5.550	4613.80	-905.39	906.64	51.67	40.5078690	-104.5851196	0.14	
4817.00	14.280	5.900	4704.83	-928.69	929.99	54.01	40.5079330	-104.5851103	0.38	
4912.00	14.110	6.610	4796.93	-951.79	953.14	56.55	40.5079965	-104.5851003	0.26	
5007.00	14.630	5.940	4888.95	-975.17	976.58	59.12	40.5080607	-104.5850902	0.57	
5102.00	13.930	5.470	4981.02	-998.43	999.90	61.45	40.5081247	-104.5850809	0.75	
5197.00	14.780	5.730	5073.05	-1021.82	1023.34	63.75	40.5081889	-104.5850718	0.90	
5291.00	14.410	5.910	5164.02	-1045.33	1046.90	66.16	40.5082536	-104.5850623	0.40	
5386.00	14.440	3.920	5256.02	-1068.86	1070.48	68.18	40.5083182	-104.5850541	0.52	
5481.00	12.590	4.020	5348.39	-1090.97	1092.62	69.72	40.5083789	-104.5850478	1.95	
5575.00	12.530	3.930	5440.14	-1111.33	1113.01	71.14	40.5084349	-104.5850419	0.07	
5670.00	14.530	3.680	5532.50	-1133.47	1135.19	72.61	40.5084957	-104.5850358	2.11	
5765.00	14.290	3.840	5624.51	-1157.03	1158.78	74.16	40.5085604	-104.5850294	0.26	
5860.00	14.070	3.950	5716.61	-1180.21	1182.00	75.74	40.5086241	-104.5850228	0.23	
5954.00	13.530	3.800	5807.90	-1202.54	1204.37	77.25	40.5086855	-104.5850165	0.58	
6049.00	14.320	3.590	5900.11	-1225.32	1227.18	78.73	40.5087480	-104.5850104	0.83	
6144.00	14.040	3.870	5992.21	-1248.51	1250.41	80.24	40.5088117	-104.5850041	0.30	
6239.00	13.420	3.470	6084.50	-1270.98	1272.91	81.68	40.5088734	-104.5849980	0.66	
6334.00	4.680	4.000	6178.22	-1285.85	1287.81	82.62	40.5089143	-104.5849941	9.20	
6428.00	0.940	174.660	6272.14	-1288.90	1290.87	82.96	40.5089227	-104.5849928	5.97	
6523.00	8.910	177.820	6366.71	-1280.76	1282.73	83.32	40.5089003	-104.5849918	8.39	
6618.00	16.370	178.330	6459.34	-1259.99	1261.96	83.99	40.5088433	-104.5849902	7.85	
6713.00	25.220	177.910	6548.06	-1226.30	1228.29	85.12	40.5087509	-104.5849874	9.32	
6808.00	35.200	177.060	6630.06	-1178.57	1180.60	87.27	40.5086199	-104.5849814	10.51	
6902.00	43.910	176.400	6702.46	-1118.81	1120.90	90.71	40.5084560	-104.5849712	9.28	
6997.00	51.240	176.940	6766.51	-1048.78	1050.94	94.76	40.5082638	-104.5849593	7.73	
7092.00	59.880	177.450	6820.19	-970.54	972.75	98.57	40.5080491	-104.5849485	9.11	
7187.00	68.530	178.470	6861.49	-885.10	887.36	101.59	40.5078147	-104.5849408	9.16	
7281.00	77.810	179.570	6888.67	-795.22	797.50	103.10	40.5075680	-104.5849387	9.94	
7376.00	88.090	180.640	6900.32	-701.09	703.34	102.92	40.5073095	-104.5849428	10.88	
7417.15†	88.796	180.146	6901.44	-659.97	662.21	102.64	40.5071967	-104.5849454	2.09	Cross 200' Hardline (200'FNL & 353'FEL,SEC.07)
7420.00†	88.845	180.112	6901.50	-657.13	659.36	102.63	40.5071888	-104.5849455	2.09	Shallowest MD for Perf
7471.00	89.720	179.500	6902.13	-606.14	608.36	102.80	40.5070489	-104.5849468	2.09	
7566.00	89.850	179.550	6902.49	-511.15	513.37	103.59	40.5067881	-104.5849475	0.15	
7661.00	89.820	179.390	6902.76	-416.15	418.37	104.47	40.5065273	-104.5849478	0.17	
7755.00	90.590	179.590	6902.43	-322.16	324.38	105.31	40.5062693	-104.5849483	0.85	
7850.00	89.690	179.290	6902.20	-227.17	229.38	106.24	40.5060086	-104.5849485	1.00	
7945.00	89.880	179.390	6902.55	-132.17	134.39	107.33	40.5057478	-104.5849481	0.23	
8040.00	89.780	179.630	6902.83	-37.18	39.39	108.14	40.5054871	-104.5849487	0.27	
8134.00	90.460	181.130	6902.64	56.78	-54.60	107.52	40.5052291	-104.5849544	1.75	
8229.00	90.090	179.540	6902.18	151.75	-149.59	106.96	40.5049684	-104.5849599	1.72	
8324.00	89.450	178.040	6902.56	246.74	-244.57	108.97	40.5047076	-104.5849562	1.72	
8419.00	90.550	179.320	6902.56	341.74	-339.54	111.16	40.5044469	-104.5849519	1.78	
8513.00	89.820	179.550	6902.26	435.73	-433.53	112.08	40.5041889	-104.5849521	0.81	

REFERENCE WELLPATH IDENTIFICATION			
Operator	NOBLE ENERGY, INC	Well	BISHOP A18-715
Field	WELD COUNTY (NOBLE NAD 83 GRID)	API/Legal	05-123-52074
Facility	SEC.07-T06N-R64W	Wellbore	BISHOP A18-715 AWB
Slot	SLOT#16 BISHOP A18-715 (860'FNL & 462'FEL,SEC.07)		

### WELLPATH DATA (183 stations)

MD [ft]	Inclination [°]	Azimuth [°]	TVD [ft]	Vert Sect [ft]	North [ft]	East [ft]	Latitude	Longitude	DLS [°/100ft]	Comments
8608.00	90.990	182.610	6901.59	530.64	-528.50	110.29	40.5039283	-104.5849620	3.45	
8703.00	89.880	181.460	6900.87	625.49	-623.44	106.92	40.5036678	-104.5849777	1.68	
8798.00	89.970	180.060	6900.99	720.43	-718.43	105.66	40.5034071	-104.5849857	1.48	
8893.00	90.220	179.560	6900.83	815.42	-813.42	105.98	40.5031464	-104.5849881	0.59	
8987.00	90.120	179.510	6900.55	909.41	-907.42	106.74	40.5028884	-104.5849889	0.12	
9082.00	90.490	179.620	6900.05	1004.40	-1002.42	107.46	40.5026276	-104.5849898	0.41	
9177.00	90.520	179.640	6899.21	1099.39	-1097.41	108.07	40.5023669	-104.5849911	0.04	
9272.00	90.280	179.670	6898.55	1194.38	-1192.41	108.65	40.5021061	-104.5849926	0.25	
9366.00	89.880	181.520	6898.42	1288.33	-1286.40	107.67	40.5018482	-104.5849996	2.01	
9461.00	89.570	174.810	6898.87	1383.27	-1381.29	110.71	40.5015876	-104.5849922	7.07	
9556.00	89.880	177.900	6899.33	1478.17	-1476.09	116.75	40.5013273	-104.5849740	3.27	
9650.00	89.910	177.720	6899.50	1572.15	-1570.02	120.34	40.5010694	-104.5849645	0.19	
9745.00	90.280	179.830	6899.34	1667.14	-1664.99	122.37	40.5008086	-104.5849608	2.25	
9840.00	90.150	179.490	6898.99	1762.13	-1759.99	122.94	40.5005479	-104.5849623	0.38	
9935.00	89.970	179.680	6898.89	1857.13	-1854.99	123.62	40.5002871	-104.5849633	0.28	
10029.00	89.910	179.210	6898.99	1951.12	-1948.98	124.53	40.5000291	-104.5849635	0.50	
10124.00	89.750	176.840	6899.27	2046.10	-2043.92	127.81	40.4997684	-104.5849553	2.50	
10219.00	89.780	179.030	6899.66	2141.08	-2138.85	131.23	40.4995078	-104.5849465	2.31	
10314.00	89.690	179.230	6900.10	2236.08	-2233.84	132.67	40.4992470	-104.5849448	0.23	
10408.00	89.820	178.350	6900.50	2330.08	-2327.82	134.66	40.4989890	-104.5849412	0.95	
10503.00	89.810	179.400	6900.81	2425.08	-2422.80	136.52	40.4987283	-104.5849380	1.11	
10598.00	90.370	180.600	6900.66	2520.06	-2517.79	136.52	40.4984675	-104.5849415	1.39	
10692.00	90.180	180.440	6900.21	2614.01	-2611.79	135.67	40.4982096	-104.5849481	0.26	
10787.00	90.120	180.500	6899.96	2708.98	-2706.79	134.89	40.4979489	-104.5849544	0.09	
10882.00	89.940	180.620	6899.91	2803.93	-2801.78	133.96	40.4976881	-104.5849613	0.23	
10977.00	89.900	181.200	6900.04	2898.87	-2896.77	132.45	40.4974275	-104.5849702	0.61	
11071.00	89.840	182.380	6900.25	2992.74	-2990.72	129.52	40.4971697	-104.5849843	1.26	
11166.00	89.630	179.870	6900.69	3087.66	-3085.69	127.65	40.4969091	-104.5849945	2.65	
11261.00	89.750	179.410	6901.21	3182.65	-3180.69	128.25	40.4966483	-104.5849959	0.50	
11355.00	89.900	178.260	6901.49	3276.64	-3274.67	130.16	40.4963903	-104.5849925	1.23	
11450.00	90.120	182.350	6901.48	3371.59	-3369.65	129.65	40.4961296	-104.5849978	4.31	
11545.00	89.750	180.170	6901.59	3466.50	-3464.62	127.57	40.4958690	-104.5850089	2.33	
11640.00	89.570	179.440	6902.15	3561.48	-3559.61	127.89	40.4956083	-104.5850112	0.79	
11734.00	90.150	180.160	6902.38	3655.47	-3653.61	128.22	40.4953503	-104.5850135	0.98	
11829.00	90.920	181.770	6901.49	3750.40	-3748.59	126.62	40.4950896	-104.5850228	1.88	
11924.00	89.600	179.010	6901.06	3845.35	-3843.58	125.97	40.4948289	-104.5850286	3.22	
12018.00	89.660	179.100	6901.67	3939.35	-3937.56	127.52	40.4945709	-104.5850266	0.12	
12113.00	89.630	179.120	6902.26	4034.34	-4032.55	129.00	40.4943102	-104.5850248	0.04	
12208.00	89.470	178.470	6903.00	4129.34	-4127.52	130.99	40.4940494	-104.5850211	0.70	
12303.00	89.810	178.910	6903.60	4224.34	-4222.50	133.17	40.4937887	-104.5850168	0.59	
12493.00	89.750	179.240	6904.33	4414.33	-4412.47	136.23	40.4932672	-104.5850129	0.18	
12587.00	89.410	179.280	6905.02	4508.33	-4506.46	137.45	40.4930092	-104.5850120	0.36	
12682.00	91.690	179.480	6904.11	4603.31	-4601.44	138.48	40.4927485	-104.5850118	2.41	
12777.00	89.900	179.680	6902.79	4698.29	-4696.43	139.17	40.4924877	-104.5850128	1.90	
12872.00	90.770	179.210	6902.23	4793.28	-4791.42	140.09	40.4922270	-104.5850130	1.04	

REFERENCE WELLPATH IDENTIFICATION			
Operator	NOBLE ENERGY, INC	Well	BISHOP A18-715
Field	WELD COUNTY (NOBLE NAD 83 GRID)	API/Legal	05-123-52074
Facility	SEC.07-T06N-R64W	Wellbore	BISHOP A18-715 AWB
Slot	SLOT#16 BISHOP A18-715 (860'FNL & 462'FEL,SEC.07)		

### WELLPATH DATA (183 stations)

MD [ft]	Inclination [°]	Azimuth [°]	TVD [ft]	Vert Sect [ft]	North [ft]	East [ft]	Latitude	Longitude	DLS [°/100ft]	Comments
12967.00	90.330	179.260	6901.32	4888.28	-4886.41	141.36	40.4919662	-104.5850120	0.47	
13062.00	89.600	178.700	6901.38	4983.27	-4981.39	143.05	40.4917055	-104.5850094	0.97	
13156.00	90.000	179.150	6901.71	5077.27	-5075.37	144.81	40.4914475	-104.5850066	0.64	
13251.00	89.870	179.010	6901.81	5172.27	-5170.36	146.34	40.4911867	-104.5850046	0.20	
13346.00	89.780	178.940	6902.10	5267.27	-5265.35	148.04	40.4909260	-104.5850020	0.12	
13536.00	90.980	179.760	6900.84	5457.25	-5455.33	150.20	40.4904045	-104.5850013	0.76	
13631.00	90.730	179.000	6899.43	5552.24	-5550.31	151.22	40.4901437	-104.5850012	0.84	
13726.00	90.150	179.420	6898.70	5647.23	-5645.30	152.53	40.4898830	-104.5850000	0.75	
13821.00	89.780	179.340	6898.76	5742.23	-5740.29	153.56	40.4896222	-104.5849998	0.40	
13916.00	89.970	179.100	6898.96	5837.23	-5835.28	154.85	40.4893615	-104.5849987	0.32	
14010.00	90.270	179.650	6898.77	5931.22	-5929.27	155.88	40.4891035	-104.5849985	0.67	
14105.00	89.840	179.260	6898.67	6026.22	-6024.27	156.78	40.4888427	-104.5849988	0.61	
14200.00	89.840	179.460	6898.94	6121.21	-6119.26	157.84	40.4885819	-104.5849985	0.21	
14295.00	89.970	179.010	6899.10	6216.21	-6214.25	159.11	40.4883212	-104.5849974	0.49	
14389.00	89.630	179.650	6899.43	6310.20	-6308.25	160.21	40.4880632	-104.5849970	0.77	
14484.00	90.000	179.260	6899.73	6405.20	-6403.24	161.12	40.4878024	-104.5849973	0.57	
14578.00	89.690	179.240	6899.99	6499.19	-6497.23	162.35	40.4875444	-104.5849963	0.33	
14673.00	89.500	179.240	6900.66	6594.19	-6592.22	163.61	40.4872836	-104.5849953	0.20	
14767.00	90.180	179.670	6900.92	6688.18	-6686.22	164.50	40.4870256	-104.5849956	0.86	
14862.00	89.720	178.750	6901.00	6783.18	-6781.21	165.81	40.4867649	-104.5849944	1.08	
14956.00	89.410	178.970	6901.72	6877.18	-6875.19	167.68	40.4865069	-104.5849912	0.40	
15050.00	89.660	180.410	6902.48	6971.16	-6969.18	168.19	40.4862489	-104.5849928	1.55	
15145.00	89.660	180.330	6903.04	7066.12	-7064.17	167.57	40.4859881	-104.5849986	0.08	
15239.00	90.000	180.240	6903.32	7160.09	-7158.17	167.11	40.4857302	-104.5850037	0.37	
15334.00	90.030	180.610	6903.30	7255.06	-7253.17	166.40	40.4854694	-104.5850098	0.39	
15428.00	90.030	180.100	6903.25	7349.02	-7347.17	165.82	40.4852115	-104.5850154	0.54	
15522.00	90.180	179.960	6903.08	7443.00	-7441.17	165.77	40.4849535	-104.5850190	0.22	
15616.00	90.030	180.250	6902.90	7536.98	-7535.17	165.60	40.4846955	-104.5850231	0.35	
15711.00	89.470	180.040	6903.32	7631.95	-7630.17	165.36	40.4844347	-104.5850275	0.63	
15900.00	90.000	179.940	6904.19	7820.91	-7819.16	165.39	40.4839160	-104.5850344	0.29	
15994.00	89.810	180.320	6904.35	7914.89	-7913.16	165.18	40.4836580	-104.5850387	0.45	
16088.00	90.090	180.710	6904.43	8008.84	-8007.16	164.33	40.4834000	-104.5850452	0.51	
16183.00	90.210	179.210	6904.18	8103.82	-8102.16	164.40	40.4831393	-104.5850485	1.58	
16372.00	91.470	180.350	6901.41	8292.77	-8291.13	165.13	40.4826206	-104.5850529	0.90	
16466.00	90.030	179.400	6900.18	8386.74	-8385.11	165.33	40.4823626	-104.5850556	1.84	
16560.00	89.780	179.360	6900.34	8480.74	-8479.11	166.35	40.4821046	-104.5850554	0.27	
16655.00	90.120	179.860	6900.42	8575.73	-8574.11	166.99	40.4818438	-104.5850566	0.64	
16749.00	90.090	179.350	6900.25	8669.72	-8668.10	167.64	40.4815858	-104.5850578	0.54	
16844.00	90.030	179.250	6900.15	8764.72	-8763.10	168.80	40.4813251	-104.5850572	0.12	
16938.00	90.890	181.330	6899.39	8858.68	-8857.09	168.33	40.4810671	-104.5850623	2.39	
17032.00	89.380	180.330	6899.17	8952.62	-8951.07	166.97	40.4808092	-104.5850707	1.93	
17127.00	89.750	179.750	6899.89	9047.59	-9046.07	166.90	40.4805484	-104.5850745	0.72	
17221.00	89.810	179.870	6900.25	9141.58	-9140.07	167.21	40.4802904	-104.5850769	0.14	
17315.00	89.750	179.530	6900.61	9235.56	-9234.07	167.70	40.4800324	-104.5850786	0.37	
17410.00	90.300	179.690	6900.57	9330.56	-9329.06	168.35	40.4797716	-104.5850798	0.60	

### REFERENCE WELLPATH IDENTIFICATION

Operator	NOBLE ENERGY, INC	Well	BISHOP A18-715
Field	WELD COUNTY (NOBLE NAD 83 GRID)	API/Legal	05-123-52074
Facility	SEC.07-T06N-R64W	Wellbore	BISHOP A18-715 AWB
Slot	SLOT#16 BISHOP A18-715 (860'FNL & 462'FEL,SEC.07)		

### WELLPATH DATA (183 stations) † = interpolated, ‡ = extrapolated station

MD [ft]	Inclination [°]	Azimuth [°]	TVD [ft]	Vert Sect [ft]	North [ft]	East [ft]	Latitude	Longitude	DLS [°/100ft]	Comments
17504.00	89.870	179.600	6900.43	9424.55	-9423.06	168.93	40.4795136	-104.5850812	0.47	
17565.00	89.840	179.480	6900.59	9485.54	-9484.06	169.42	40.4793462	-104.5850817	0.20	Last BH MWD Survey
17590.00‡	89.840	179.480	6900.66	9510.54	-9509.06	169.65	40.4792776	-104.5850818	0.00	Projection to Bit (203'FSL & 375'FEL,SEC.18)

### TARGETS

Name	TVD [ft]	North [ft]	East [ft]	Grid East [US ft]	Grid North [US ft]	Latitude	Longitude	Shape
OGDP 1 SEC.07-T06N-R64W	-2.00	-0.33	38.66	3254380.72	1428262.61	40.5053800	-104.5852000	polygon
2D Polygon: dimensions not calculated								
OGDP 1 SEC.18-T06N-R64W	-2.00	-0.33	38.66	3254380.72	1428262.61	40.5053800	-104.5852000	polygon
2D Polygon: dimensions not calculated								
BISHOP A18-715 BHL Rev-2 (200'FSL & 350'FEL,SEC.18)	6901.00	-9511.70	194.27	3254536.32	1418751.58	40.4792696	-104.5849934	point
BISHOP A18-715 LP Rev-2 (200'FNL & 350'FEL,SEC.07)	6901.00	662.21	105.90	3254447.96	1428925.13	40.5071966	-104.5849336	point
BISHOP A18-715 BHL Rev-1 (200'FSL & 350'FEL,SEC.18)	6950.00	-9511.70	194.27	3254536.32	1418751.58	40.4792696	-104.5849934	point
BISHOP A18-715 LP Rev-1 (200'FNL & 350'FEL,SEC.07)	6950.00	662.21	105.90	3254447.96	1428925.13	40.5071966	-104.5849336	point
DP 133 Hardlines (200'FNL/FSL & 300'FEL/FWL)	6999.00	-0.13	22.53	3254364.58	1428262.81	40.5053810	-104.5852580	polygon
2D Polygon: dimensions not calculated								

### WELLPATH COMPOSITION - Ref Wellbore: BISHOP A18-715 AWB Ref Wellpath: BISHOP A18-715 AWP

Start MD [ft]	End MD [ft]	Positional Uncertainty Model	Log Name/Comment	Wellbore	Survey Date
29.00	2019.00	OWSG MWD rev2 (MS+IFR1)	13.5" EVO Surface OWSG MWD rev2 (MS + IFR1) <130'-2019>	BISHOP A18-715 AWB	1/1/2024
2019.00	17590.00	OWSG MWD rev2 (MS+IFR1)	8.5" Lucida OWSG MWD rev2 (MS+IFR1) <2165'-17565>	BISHOP A18-715 AWB	1/17/2024

REFERENCE WELLPATH IDENTIFICATION			
Operator	NOBLE ENERGY, INC	Well	BISHOP A18-715
Field	WELD COUNTY (NOBLE NAD 83 GRID)	API/Legal	05-123-52074
Facility	SEC.07-T06N-R64W	Wellbore	BISHOP A18-715 AWB
Slot	SLOT#16 BISHOP A18-715 (860'FNL & 462'FEL,SEC.07)		

WELLPATH COMMENTS				
MD [ft]	Inclination [°]	Azimuth [°]	TVD [ft]	Comment
130.00	0.150	142.760	130.00	First BH MWD Survey
7417.15	88.796	180.146	6901.44	Cross 200' Hardline (200'FNL & 353'FEL,SEC.07)
7420.00	88.845	180.112	6901.50	Shallowest MD for Perf
17565.00	89.840	179.480	6900.59	Last BH MWD Survey
17590.00	89.840	179.480	6900.66	Projection to Bit (203'FSL & 375'FEL,SEC.18)