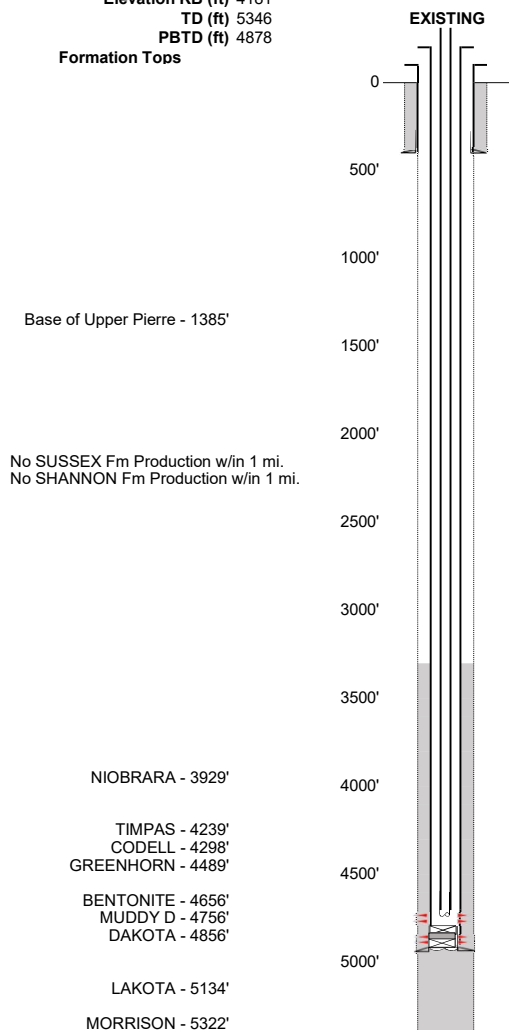


SPRINGDALE PARTNERS LLC - 10487  
**SPRINGDALE STORAGE #2**  
API # 075-05861

Prepared DTA 3/28/2024  
QC: MJH

Loc. # 312147  
FIELD NAME SPRINGDALE - #78300  
Spud Date 7/6/1951  
Basin DENVER - JULESBURG  
Location NENE 16 8N 53W 6  
Elevation GL (ft) 4171  
Elevation KB (ft) 4181  
TD (ft) 5346  
PBSD (ft) 4878  
Formation Tops



Existing Casing and Cement Coverage  
SURF: Size: 8.625", Hole Size: UNK  
Depth: 404 ft., Weight: 32  
Cement: 200 sx, Top: 0 ft., Method: Vis

1ST, Size: 5.5", Hole Size: 7.875"  
Depth: 4969', Weight: 14  
Cement: 250 sx, TOC: 3322', Method: CBL

2" tubing, depth UNK  
TOC = 3322' (CBL)  
MDDYD Perfs 4756'-4760', 4824'-4825' sqz'd (#210769)  
DKTA Perfs 4864'-4870', 4884'-4887'  
DKTA Perfs 4894-4896 sqz'd w/ 150 sx (#210779)  
CIBP driven to 4878' (#210769)  
CIBP @ 4878' w/ 5 sx on top (#210773)  
PBSD (ft) 4878'  
TD (ft) 5346'

