

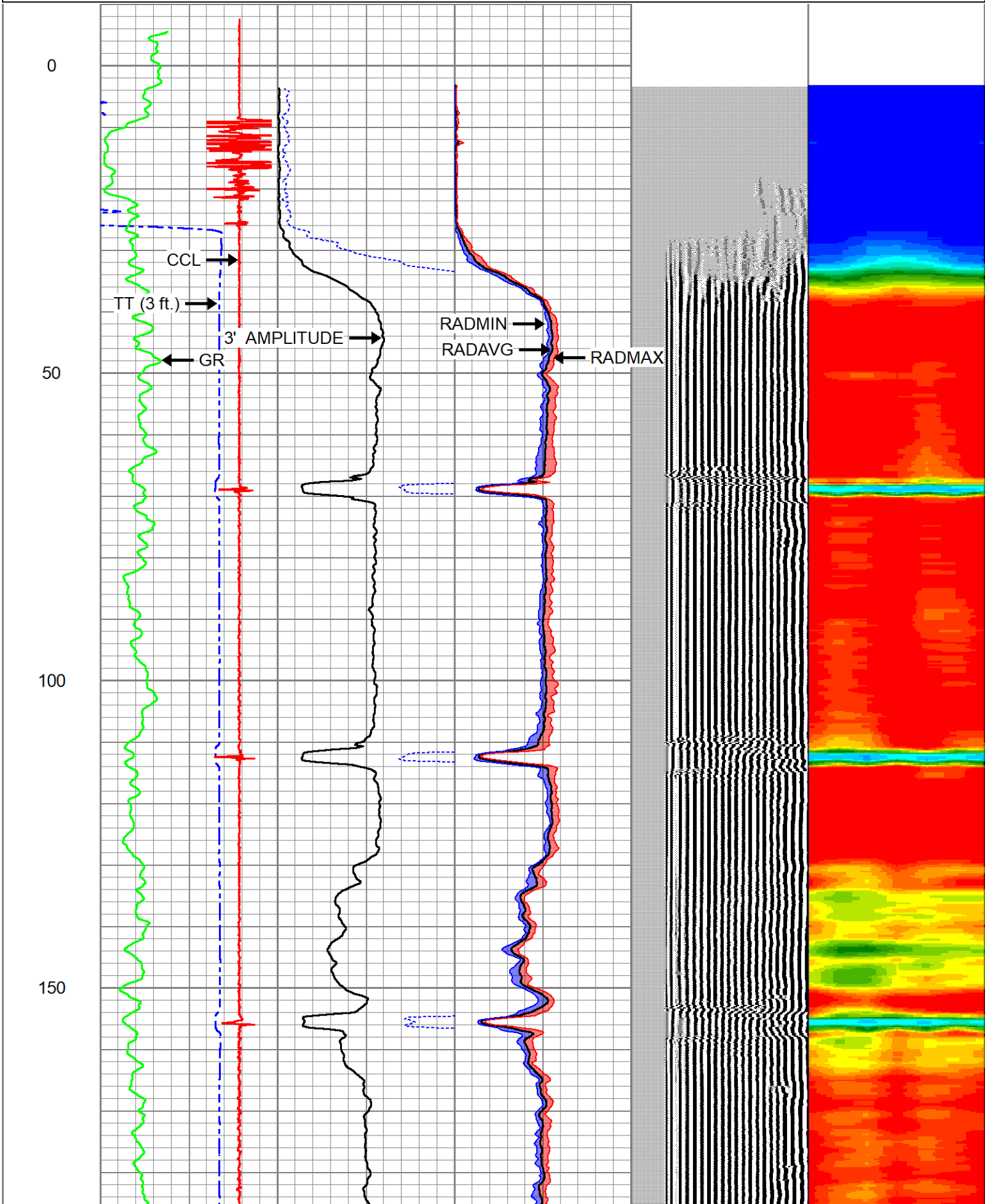


			CENT-BC275-0000 Probe 2.75" Bowspring Centralizer	2.83	2.75	24.00
CCL	0.00					
GR	0.97					
			DSS_HSR_ELE-DSS_HSR_10_ELE (HSR10 0000) DSS 1 11/16" HSR Bond tool - Electronics Module	5.99	1.69	27.50
ROTV	5.24					
TCF	5.24					
THV	5.24					
INTEMP	5.24		CENT-DSS-RAC10-END (RAC10END-0000) DSS 1 11/16" END Roller Arm Centralizer	2.55	1.69	15.00
PNEG	5.24					
PPOS	5.24					
GRHV	5.24					
WVFS6	9.71					
WVFS5	9.71					
WVFS4	9.71					
WVFS3	9.71					
WVFS2	9.71					
WVFS1	9.71		DSS_HSR_SND-DSS_HSR_10_SND (HSR10 0000) DSS 1 11/16" HSR Bond tool - Sonde Module	8.26	1.69	41.50
WVFCAL	10.21					
WVF3FT	10.21					
WVF5FT	11.21					
TEMP	15.71					
WVFSYNC	16.05					
			CENT-BC275-0000 Probe 2.75" Bowspring Centralizer	2.83	2.75	24.00

Dataset: pdc-merritt 6-66-9-0857ch.db: WATTENBERG-90750/MERRITT\_6-66-9-0857CH/DSSHSR10/RBL.1  
 Total length: 23.49 ft  
 Total weight: 135.31 lb  
 O.D.: 2.75 in

Database File pdc-merritt 6-66-9-0857ch.db  
 Dataset Pathname WATTENBERG-90750/MERRITT\_6-66-9-0857CH/DSSHSR10/RBL.1  
 Presentation Format ranger\_dss\_radial  
 Dataset Creation Thu Feb 08 17:22:57 2024  
 Charted by Depth in Foot scaled 1:240

TT (3 ft.)		3' AMPLITUDE		0	RADAVG	100	VDL (5 ft.)		1	RADIAL MAP	6
380	(usec)	220	0	(mV)	100	0	RADMAX	100	200	(usec)	1200
-20000 CCL		20000		3' Amplitude x5		0	RADMIN	100			
0	GR (GAPI)	150	0	(mV)	20						



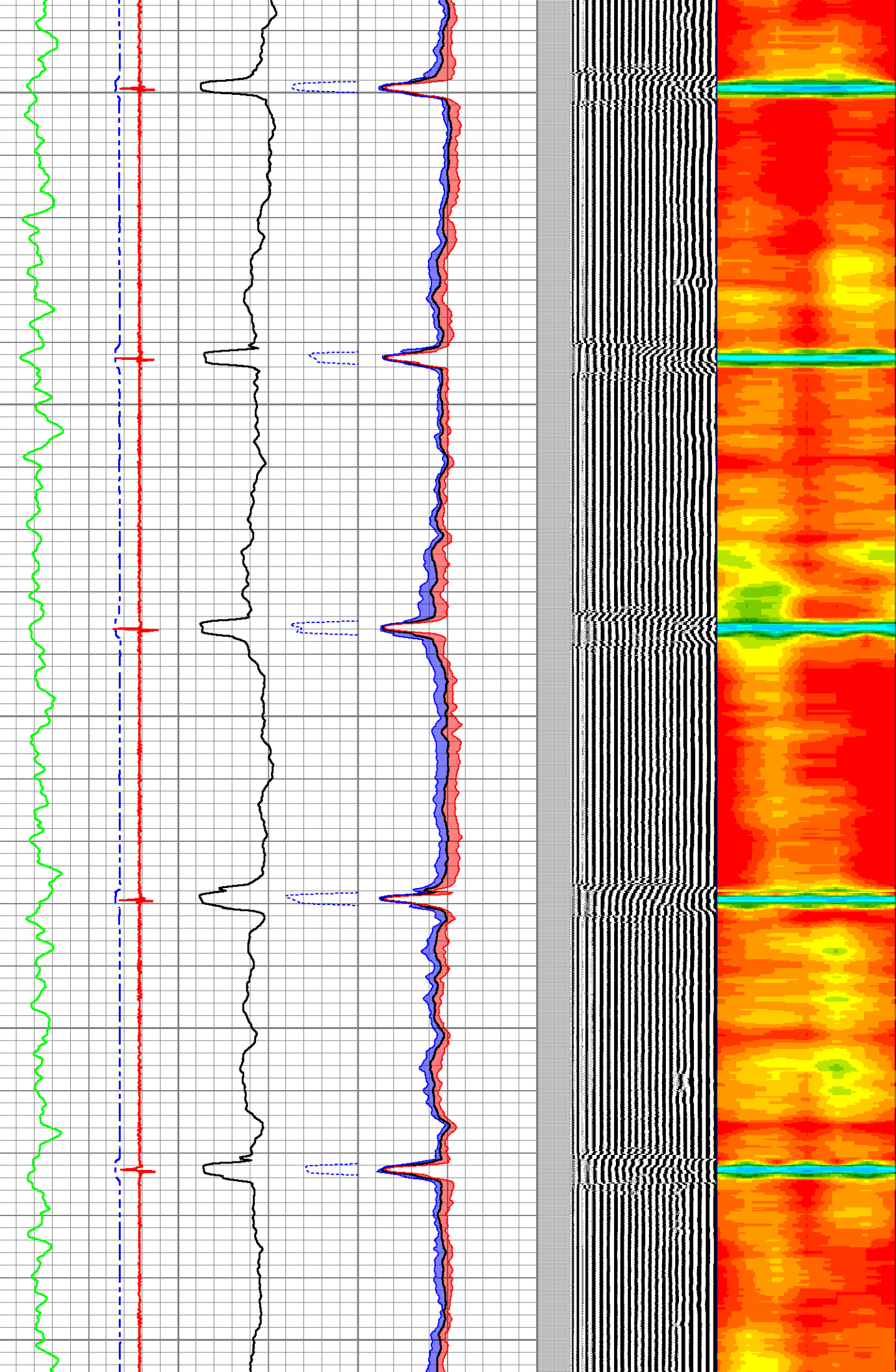
200

250

300

350

400

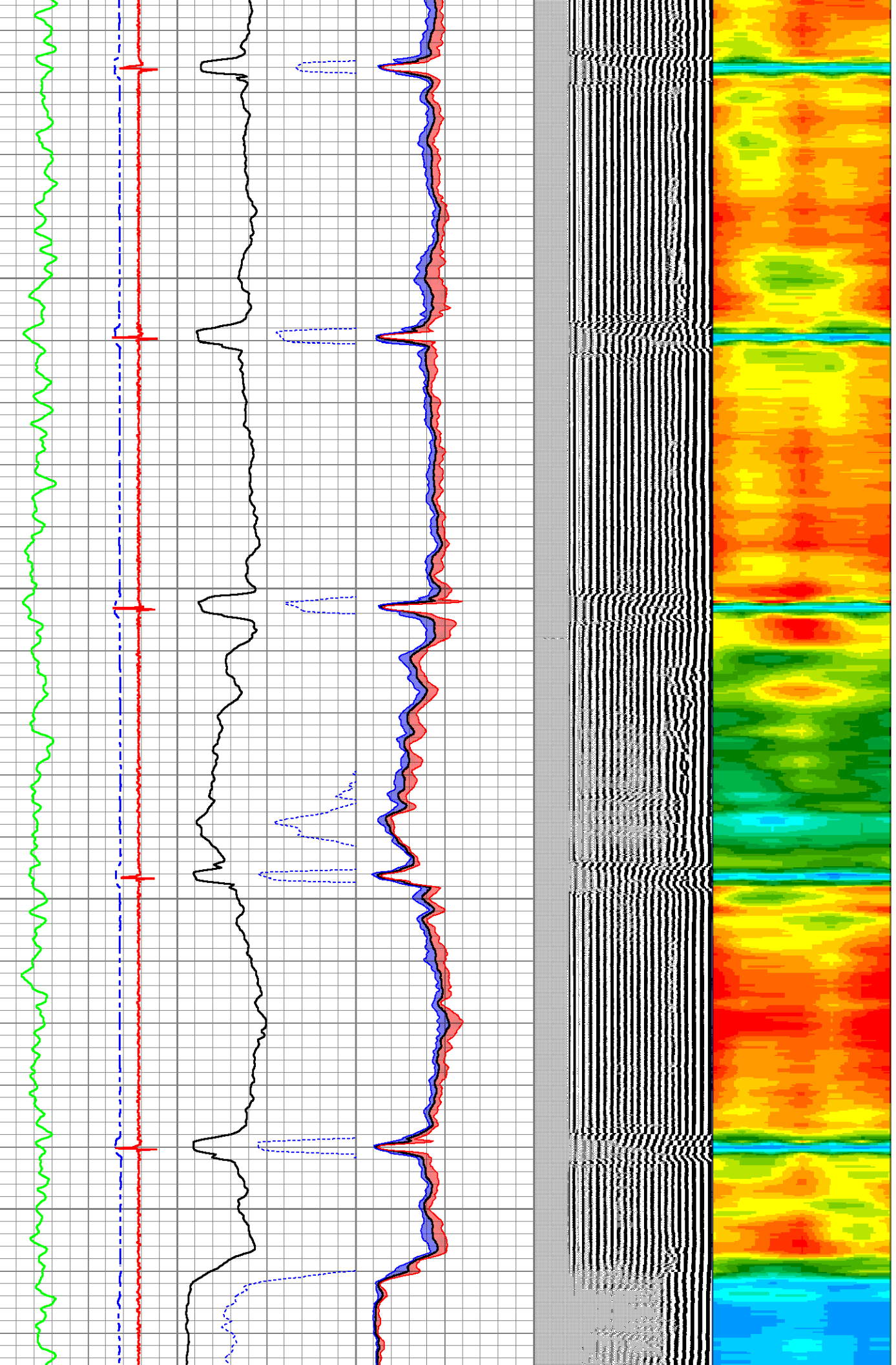


450

500

550

600

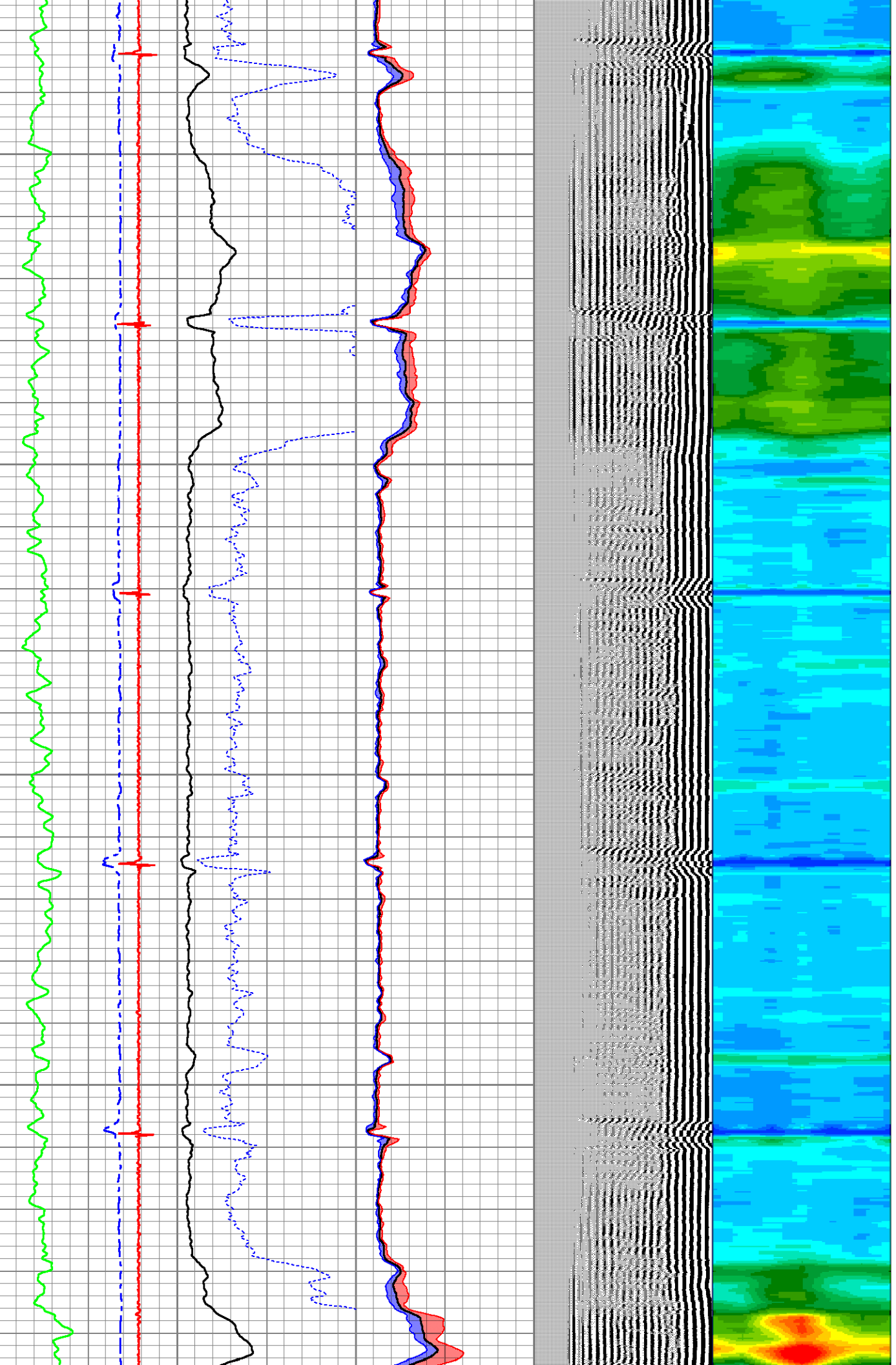


650

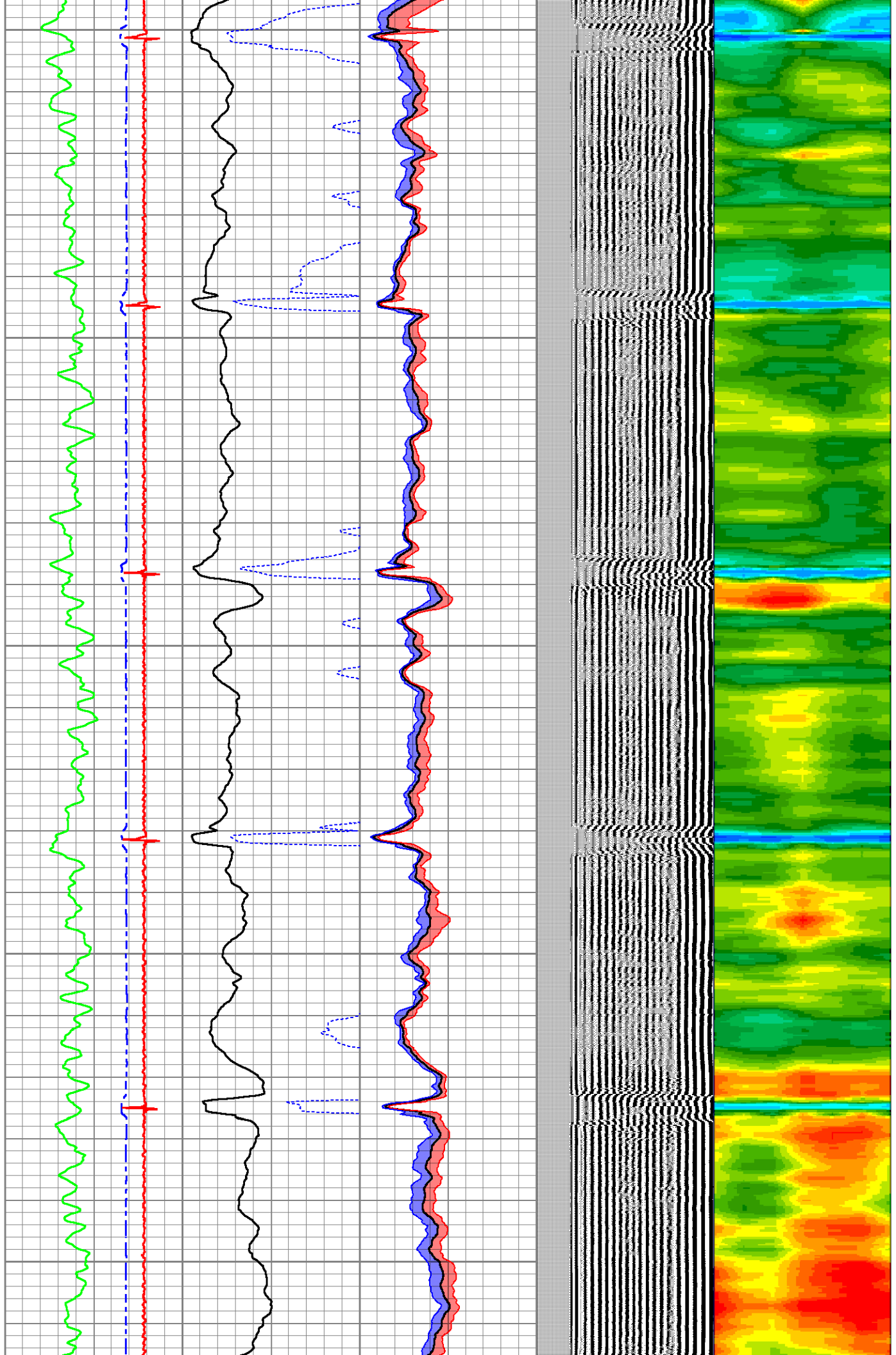
700

750

800



850  
900  
950  
1000  
1050

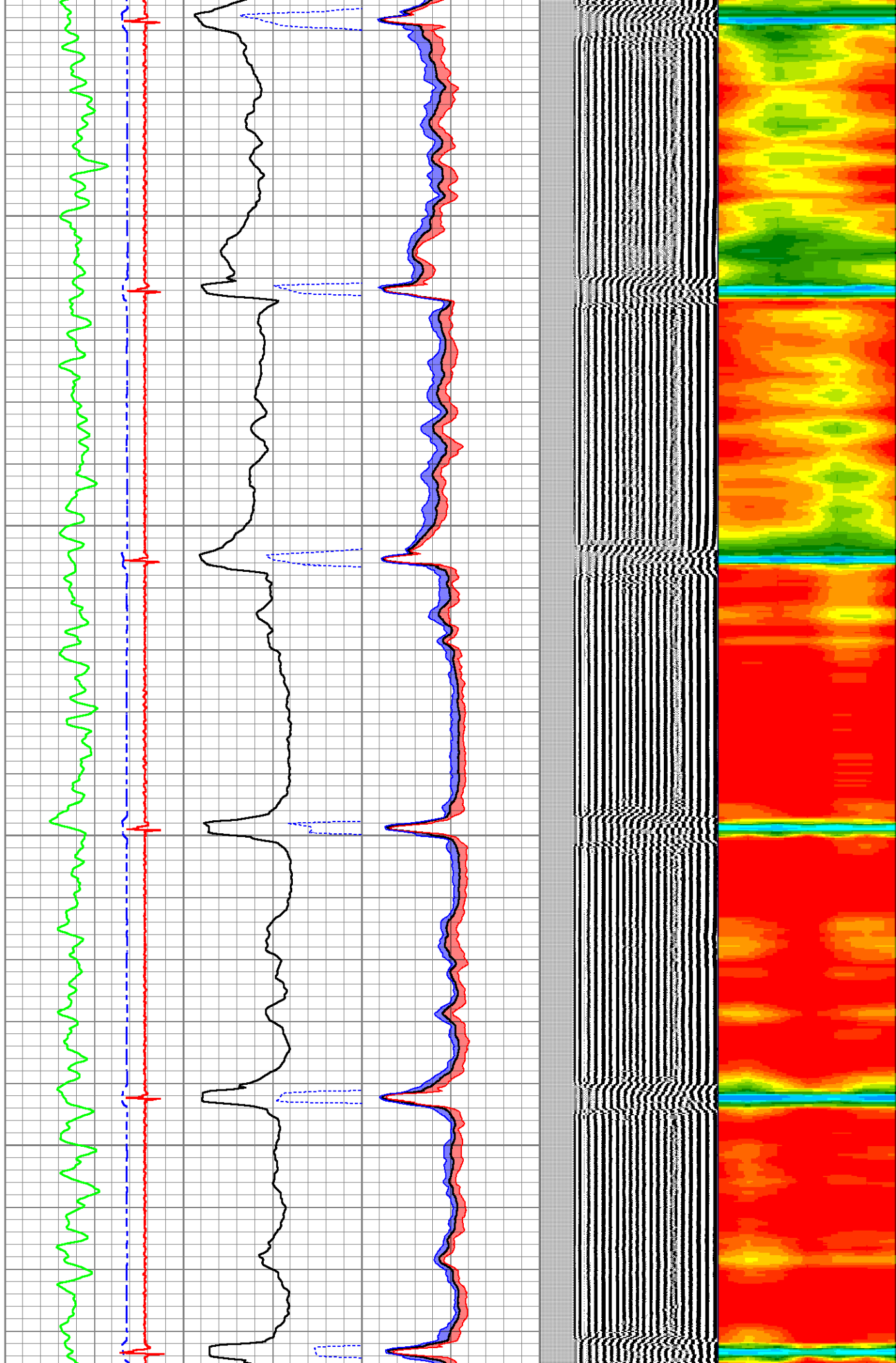


1100

1150

1200

1250



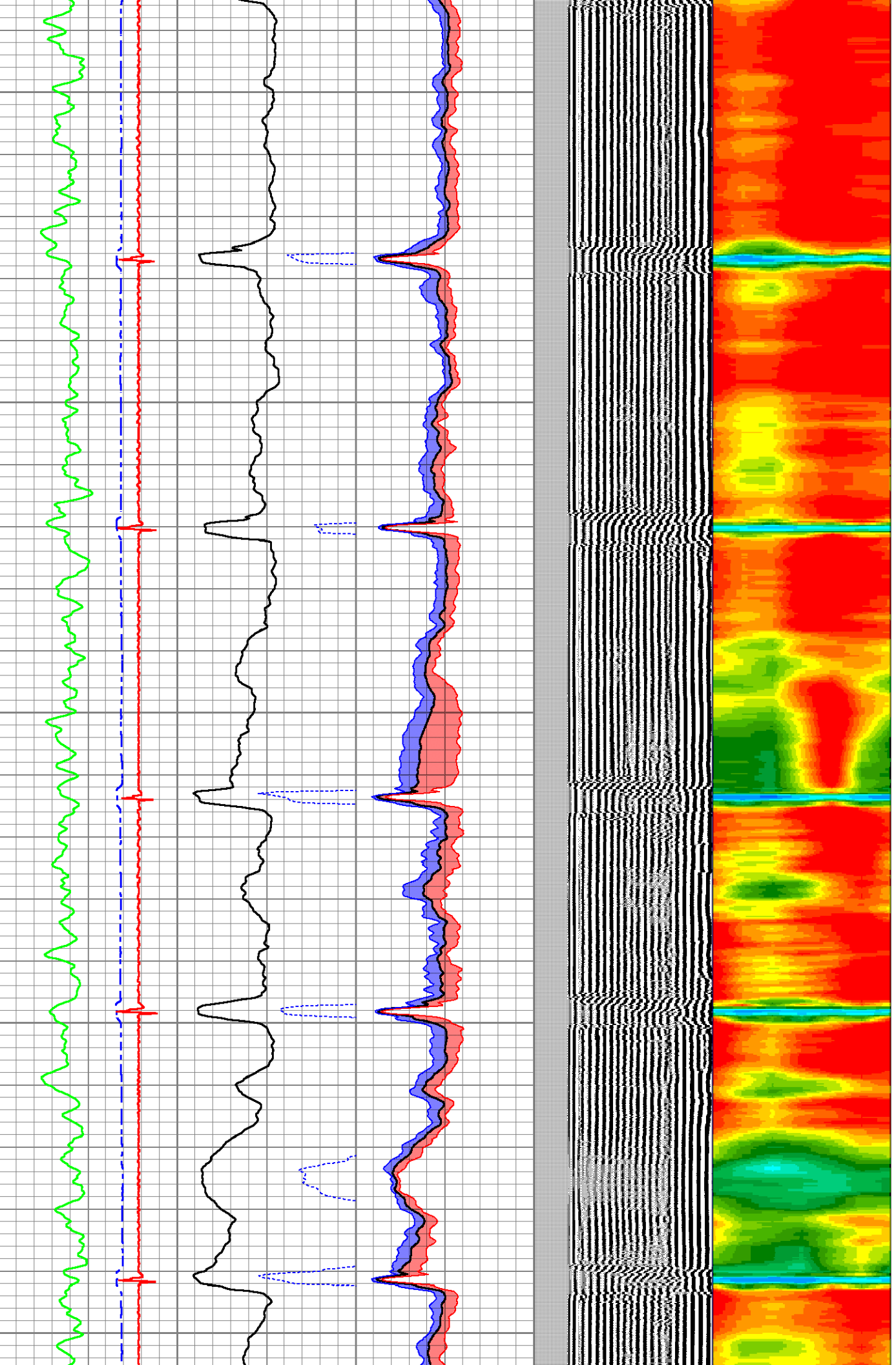
1300

1350

1400

1450

1500

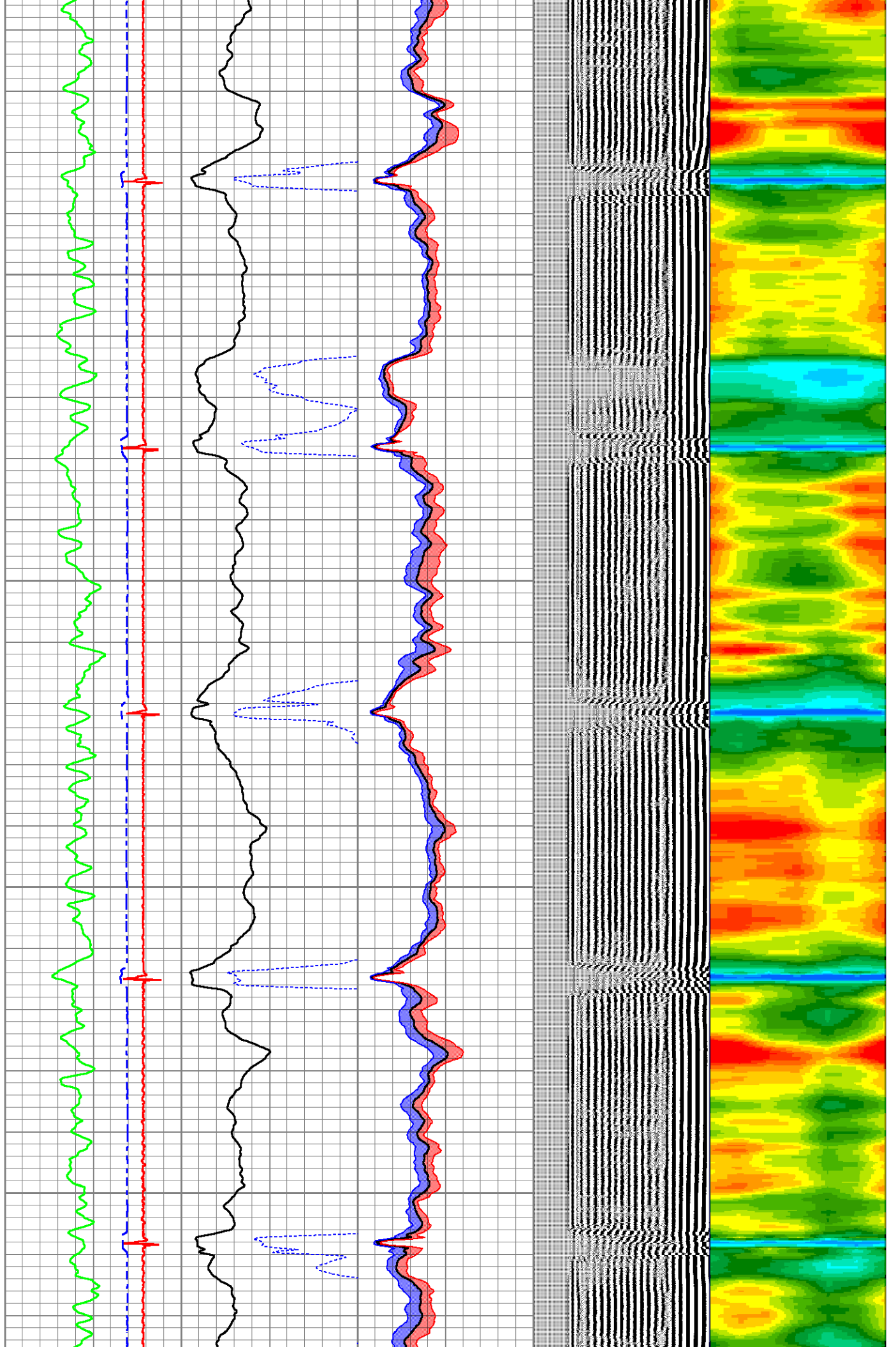


1550

1600

1650

1700

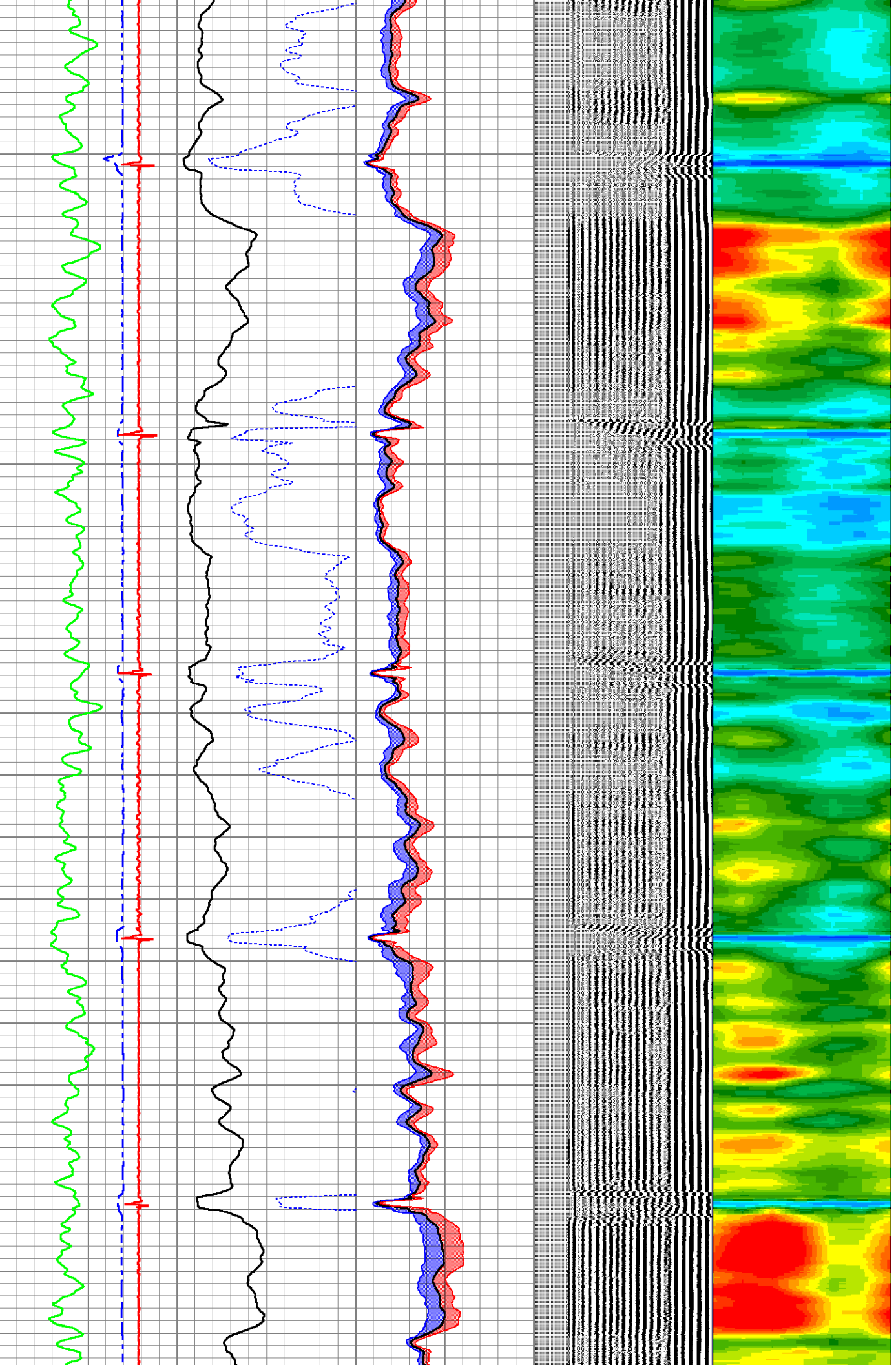


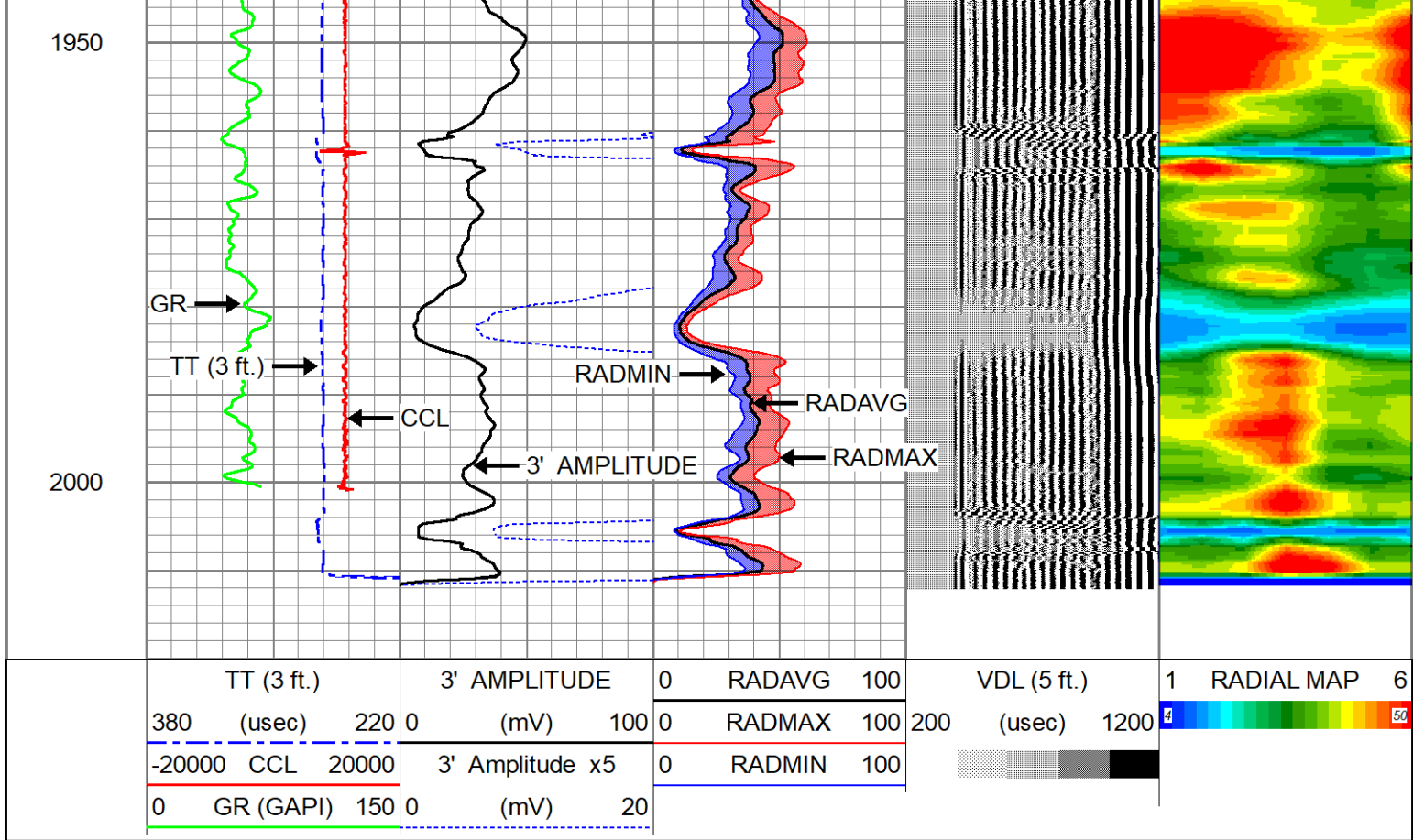
1750

1800

1850

1900





**Company** CHEVRON  
**Well** MERRITT 6-66-9-0857CH  
**Field** WATTENBERG-90750  
**County** WELD  
**State** COLORADO  
**Country** U.S.A.