



FORM E-100



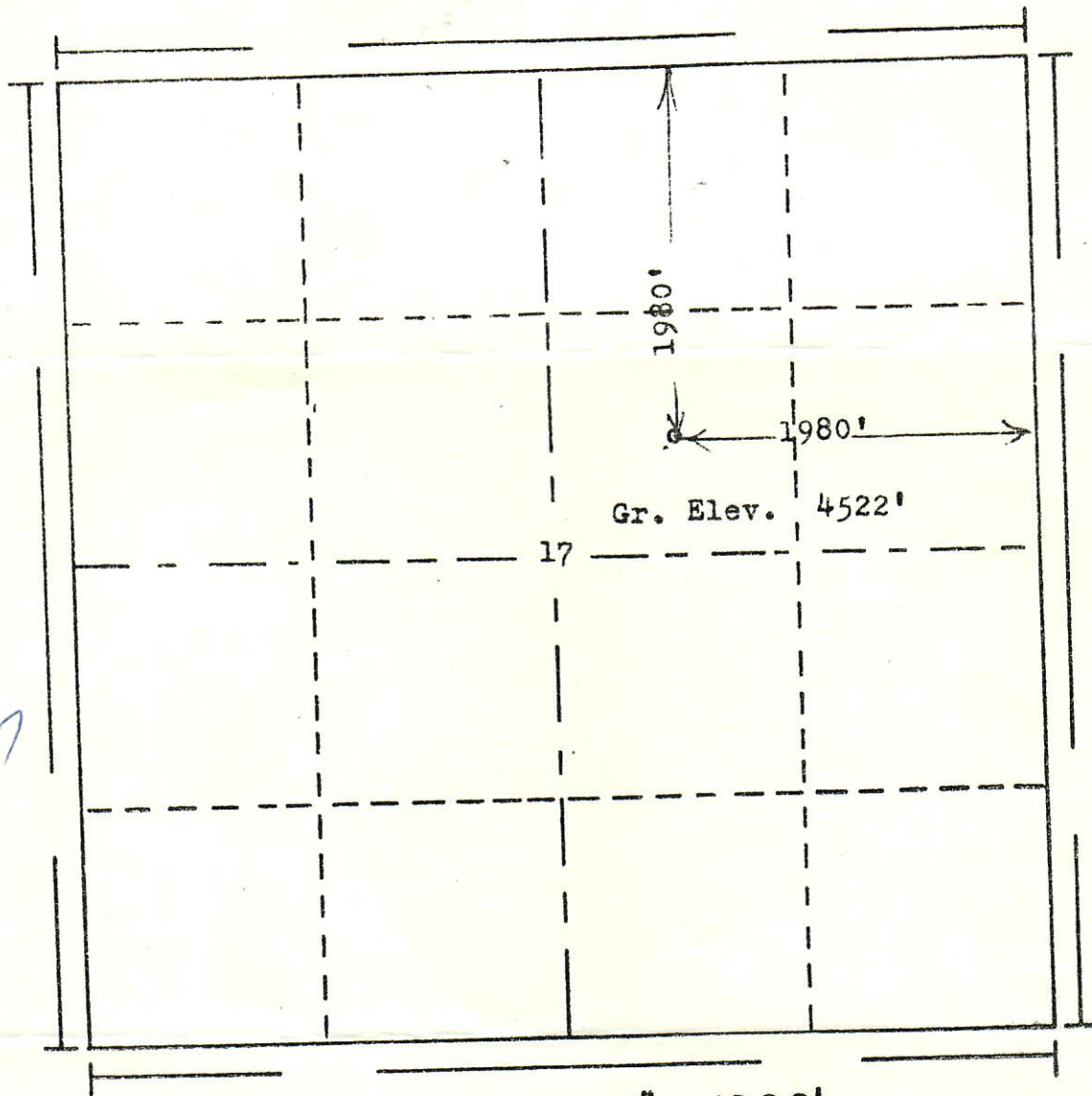
00264876

RECEIVED

APR 2 1975

GOLD. CO. & GAS CORP. COMM.

R. 56W



T. 9 N

Scale... 1" = 1000'

Powers Elevation Company, Inc. of Denver, Colorado
has in accordance with a request from Mr. Gear
for Dyco Petroleum Corp.

determined the location of No. 1 Chapel
to be CSW NE

Section 17 Township 9N

Range 56W of the 6th Principal Meridian
Weld County, Colorado

I hereby certify that this plat is an
accurate representation of a correct
survey showing the location of

Date: 7-2-74

B. J. H. H. H.
Licensed Land Surveyor No. 2853
State of Colorado