



**RADIAL BOND TOOL  
GAMMA RAY  
CCL**

Company CHEVRON  
Well GLOVER USX B15-02 CD  
Field WATTENBERG  
County WELD  
State CO  
Country USA

Company CHEVRON  
Well GLOVER USX B15-02 CD  
Field WATTENBERG  
County WELD  
State CO  
Country USA

Location: API #: 05-123-30260  
NW/SE  
LAT 40.397860 LONG -104.533647  
SEC 15 TWP 5N RGE 64W

Permanent Datum GL Elevation 4573'  
Log Measured From KB 13'  
Drilling Measured From GL

Other Services  
Elevation  
K.B. 4586'  
D.F. 4585'  
G.L. 4573'

Date 12/10/2021

Run Number ONE

Depth Driller 7366'

Depth Logger 3002'

Bottom Logged Interval 3006'

Top Log Interval SURFACE

Open Hole Size 7.875"

Type Fluid WATER

Density / Viscosity N/A

Max. Recorded Temp. 138.60°

Estimated Cement Top N/A

Time Well Ready ON ARRIVAL

Time Logger on Bottom N/A

Equipment Number 7770

Location GREELEY, CO

Recorded By CODY JENSEN

Witnessed By Victor Guevara

Borehole Record				Tubing Record			
Run Number	Bit	From	To	Size	Weight	From	To


	Size	Mgt/Ft	Top	Bottom
Casing Record	8.625"	24#	SURFACE	1626'
Surface String				
Prot. String	4.5"	11.6#	SURFACE	7340'
Production String				
Liner				

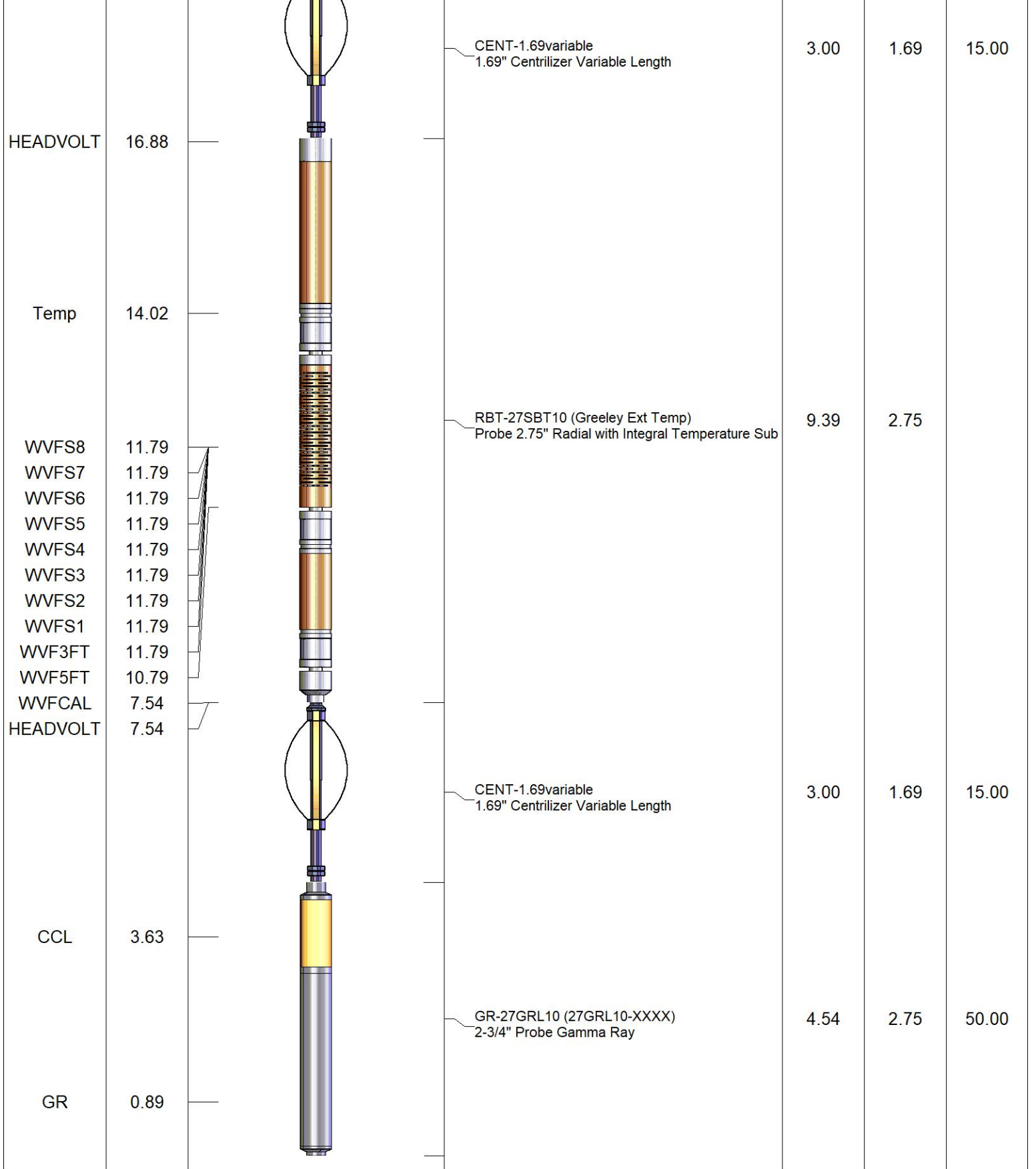
<<< Fold Here >>>

All interpretations are opinions based on inferences from electrical or other measurements and we cannot and do not guarantee the accuracy or correctness of any interpretation, and we shall not, except in the case of gross or willful negligence on our part, be liable or responsible for any loss, costs, damages, or expenses incurred or sustained by anyone resulting from any interpretation made by any of our officers, agents or employees. These interpretations are also subject to our general terms and conditions set out in our current Price Schedule.

**Comments**

**RAN CBL TO VERIFY CEMENT BOND  
WELL LOADED UPON ARRIVAL**

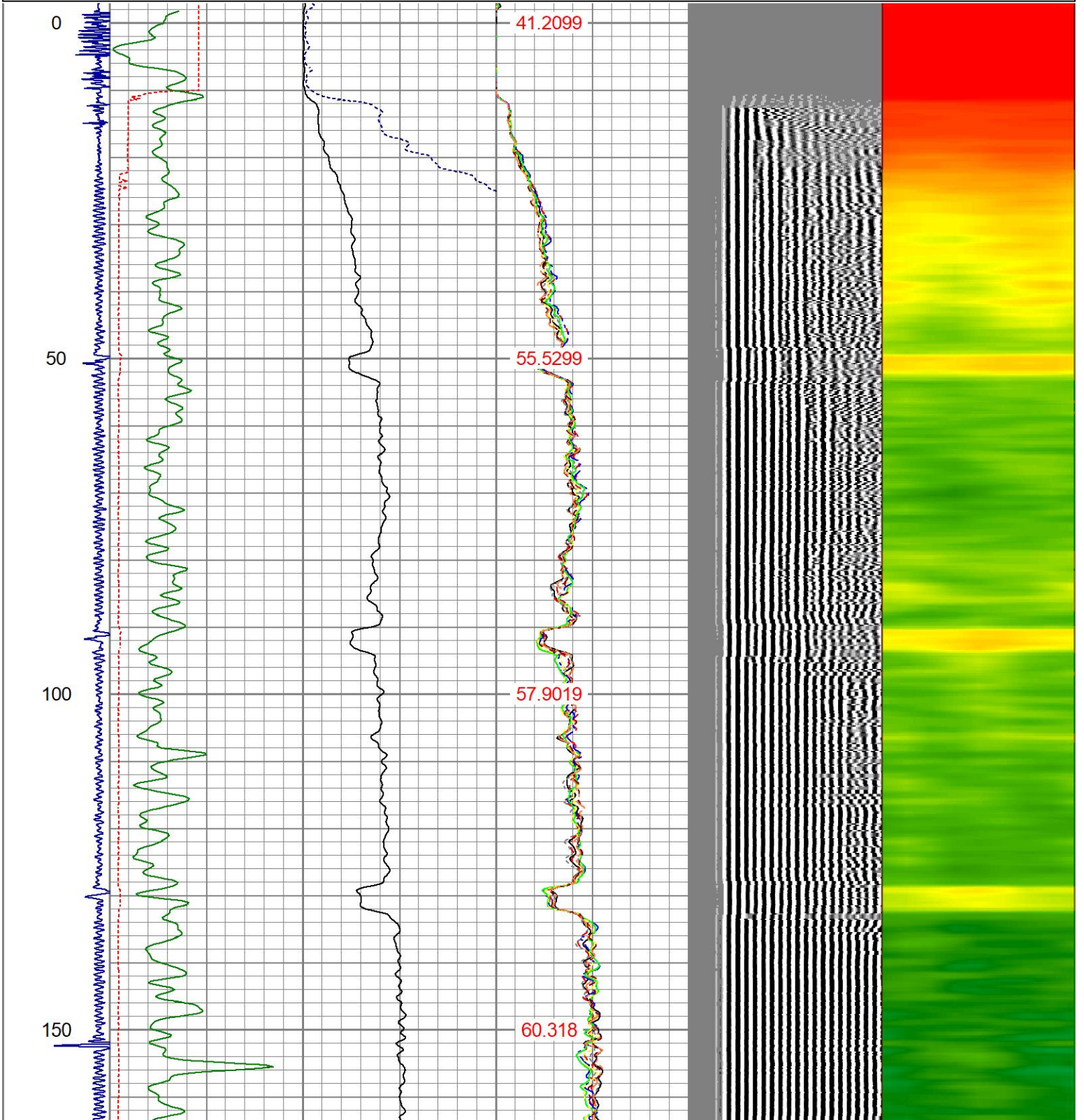
Sensor	Offset (ft)	Schematic	Description	Length (ft)	O.D. (in)	Weight (lb)
			CHD-1_7/16_Cabehead 1 7/16 Cablehead	1.00	1.44	5.00

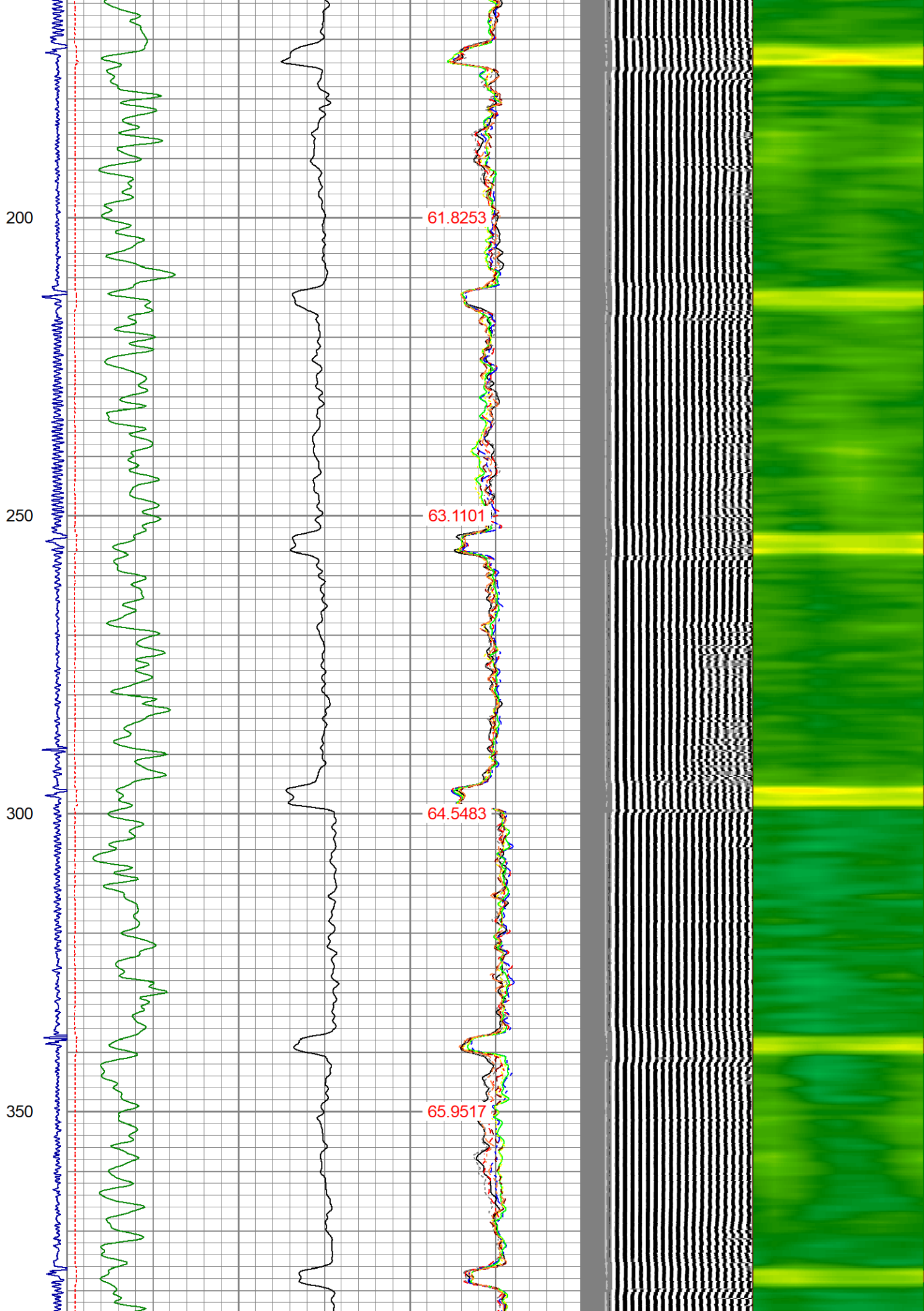


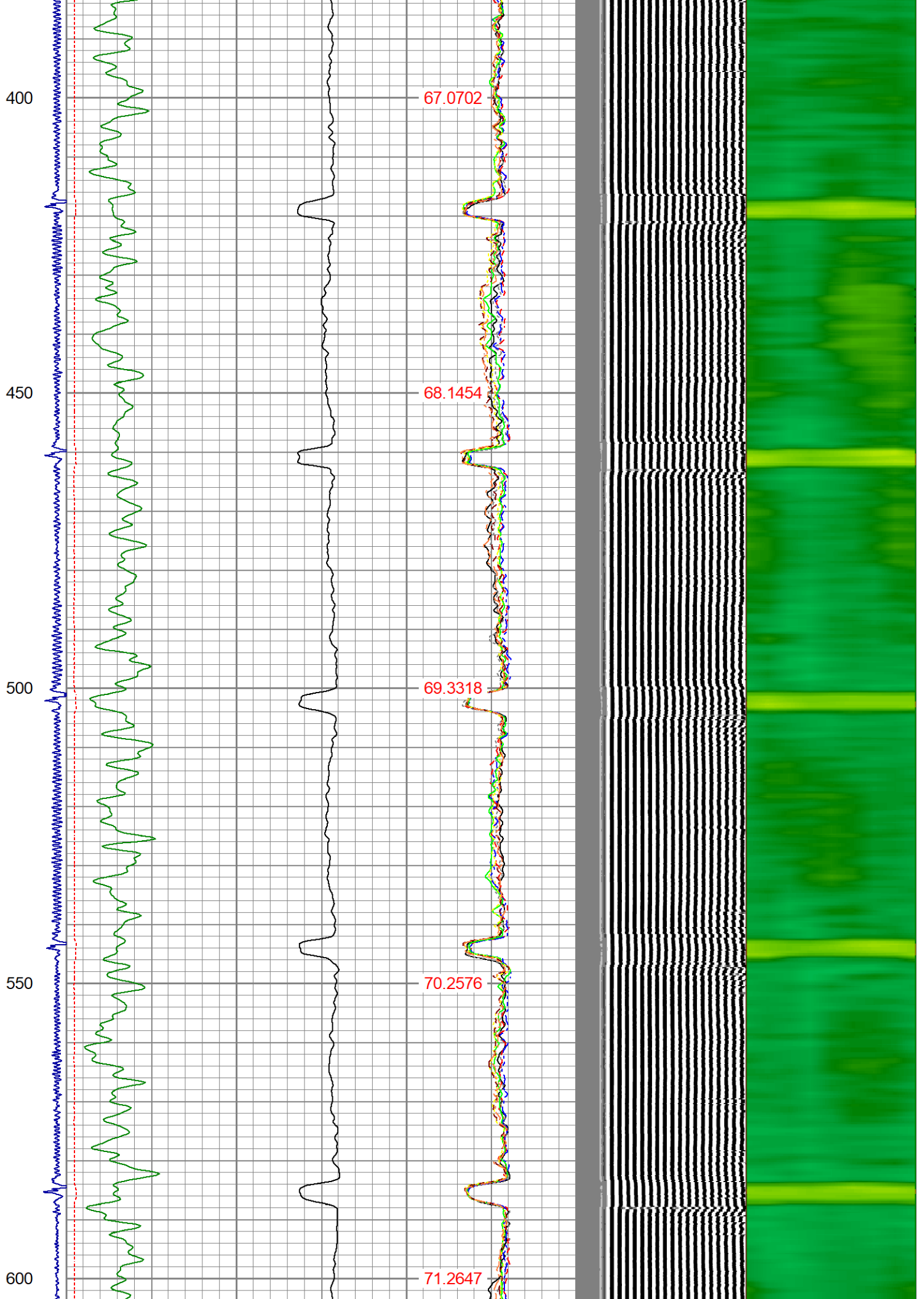
Dataset: glover usx b15-02cd.db: field/well/run1/pass6  
 Total length: 20.93 ft  
 Total weight: 85.00 lb  
 O.D.: 2.75 in

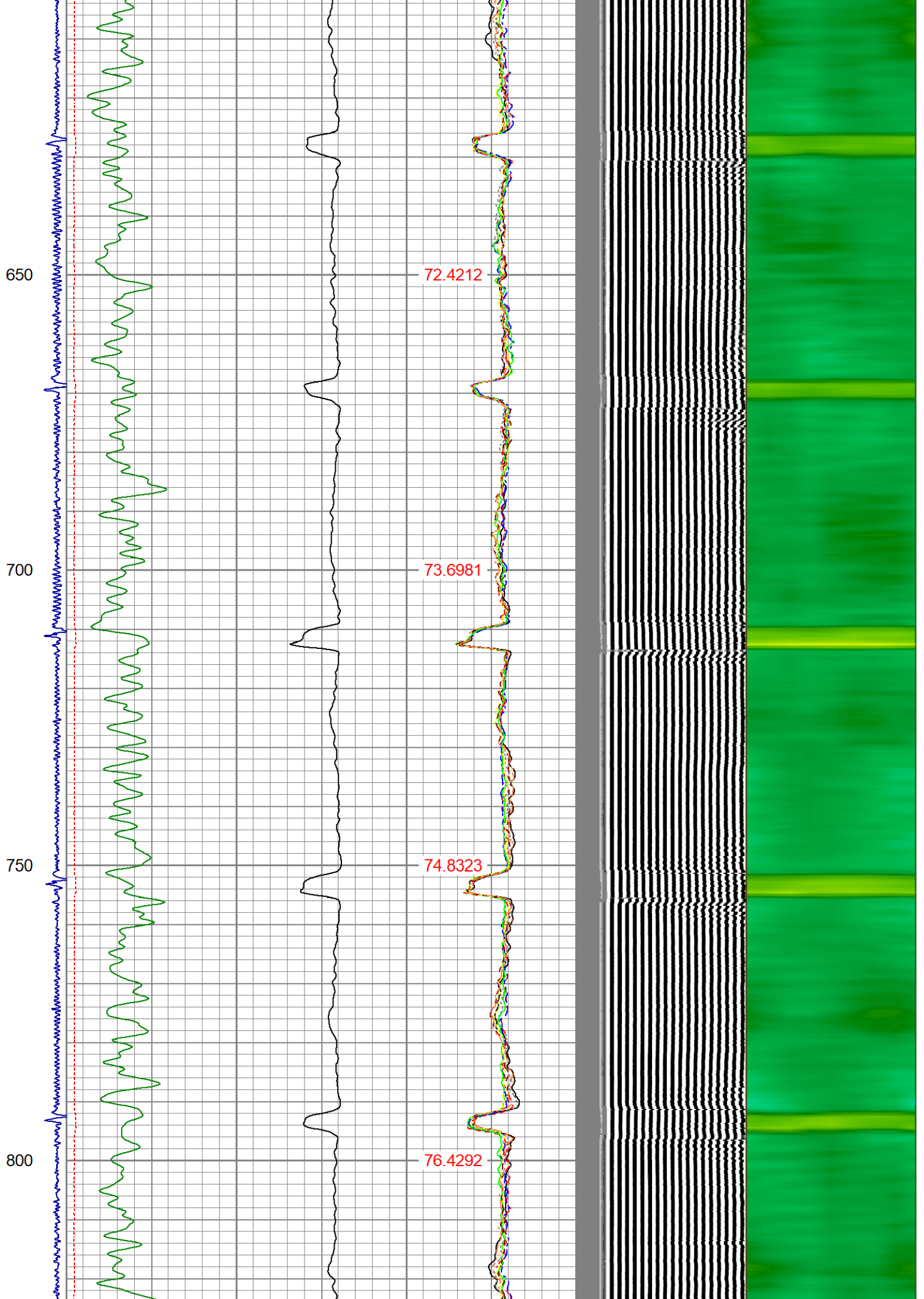
Database File glover usx b15-02cd.db  
 Dataset Pathname pass6  
 Presentation Format ips\_rbtcolor  
 Dataset Creation Fri Dec 10 08:07:38 2021  
 Charted by Depth in Foot scaled 1:240

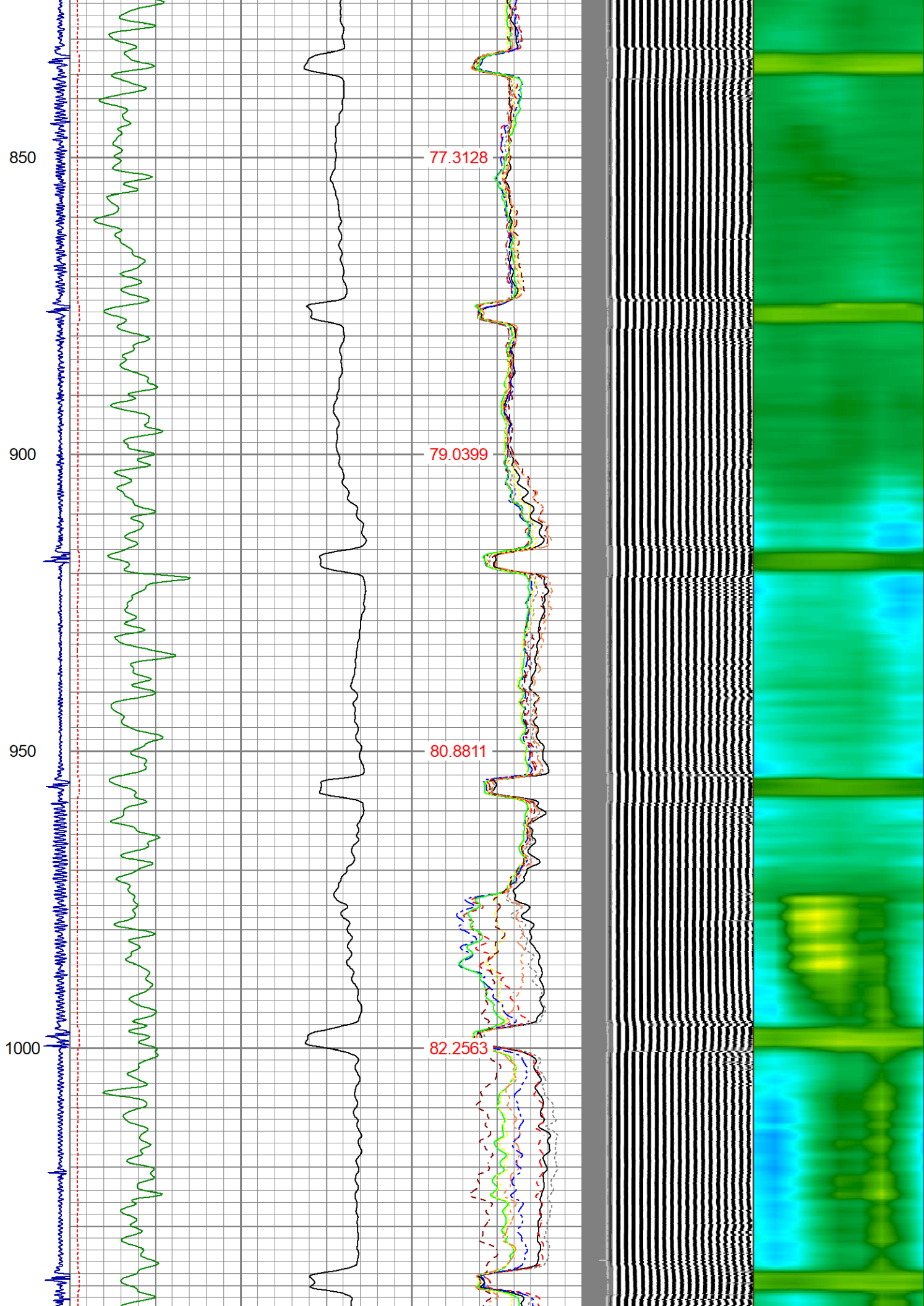
-9	CCL	1	200	TT (usec)	1000	0	AMP (mV)	100	0	AMPS1	100	200	VDL (usec)	1200	1	Cement Map	8	
	LSPD		0	GR (GAPI)	200	0	AMPx5 (mV)	20	0	AMPS2	100							
	(ft/min)		200	GR (GAPI)	400				0	AMPS3	100							
0		250							0	AMPS4	100							
									0	AMPS5	100							
									0	AMPS6	100							
									0	AMPS7	100							
									0	AMPS8	100							
										TEMP								
										(degF)								

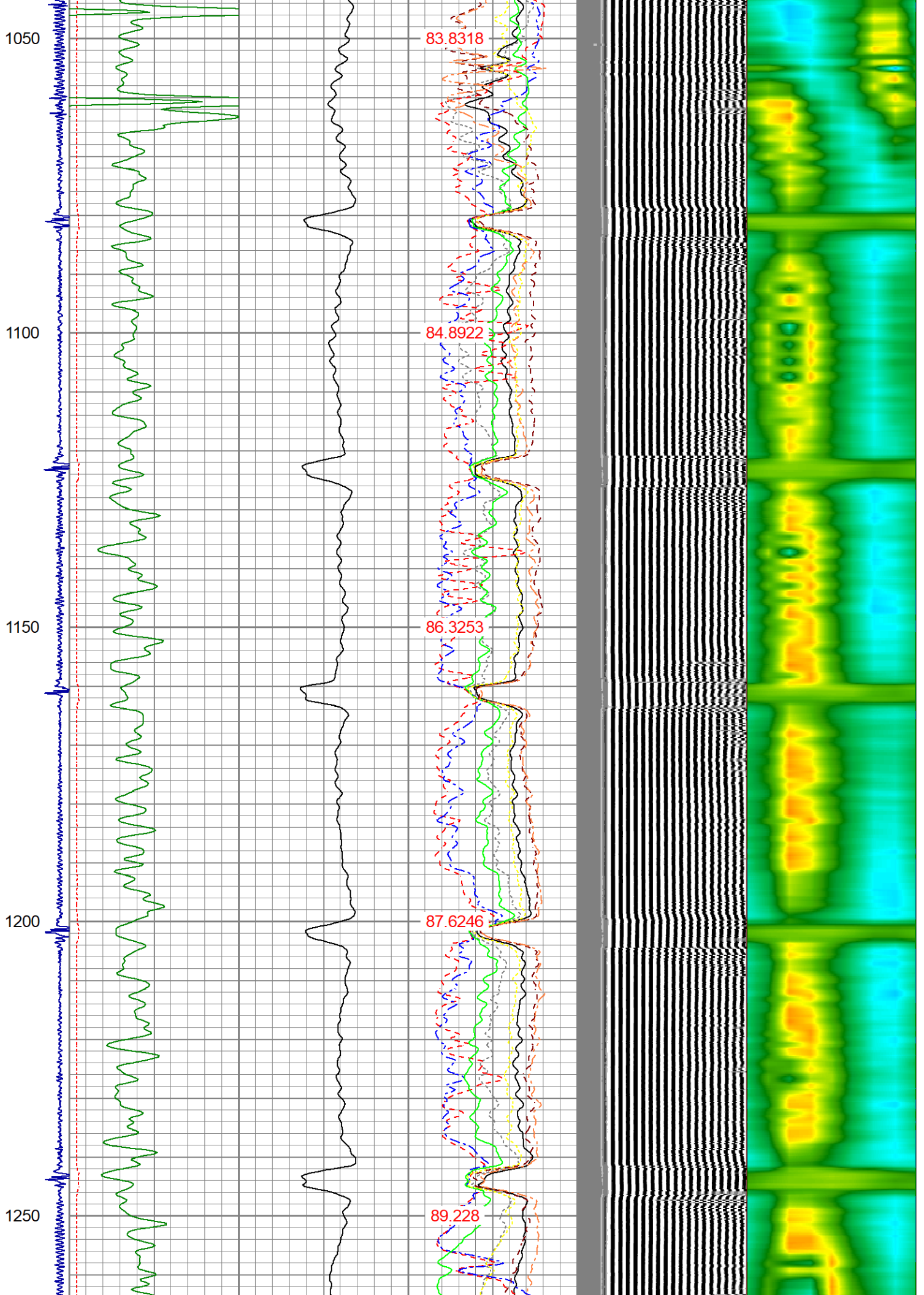


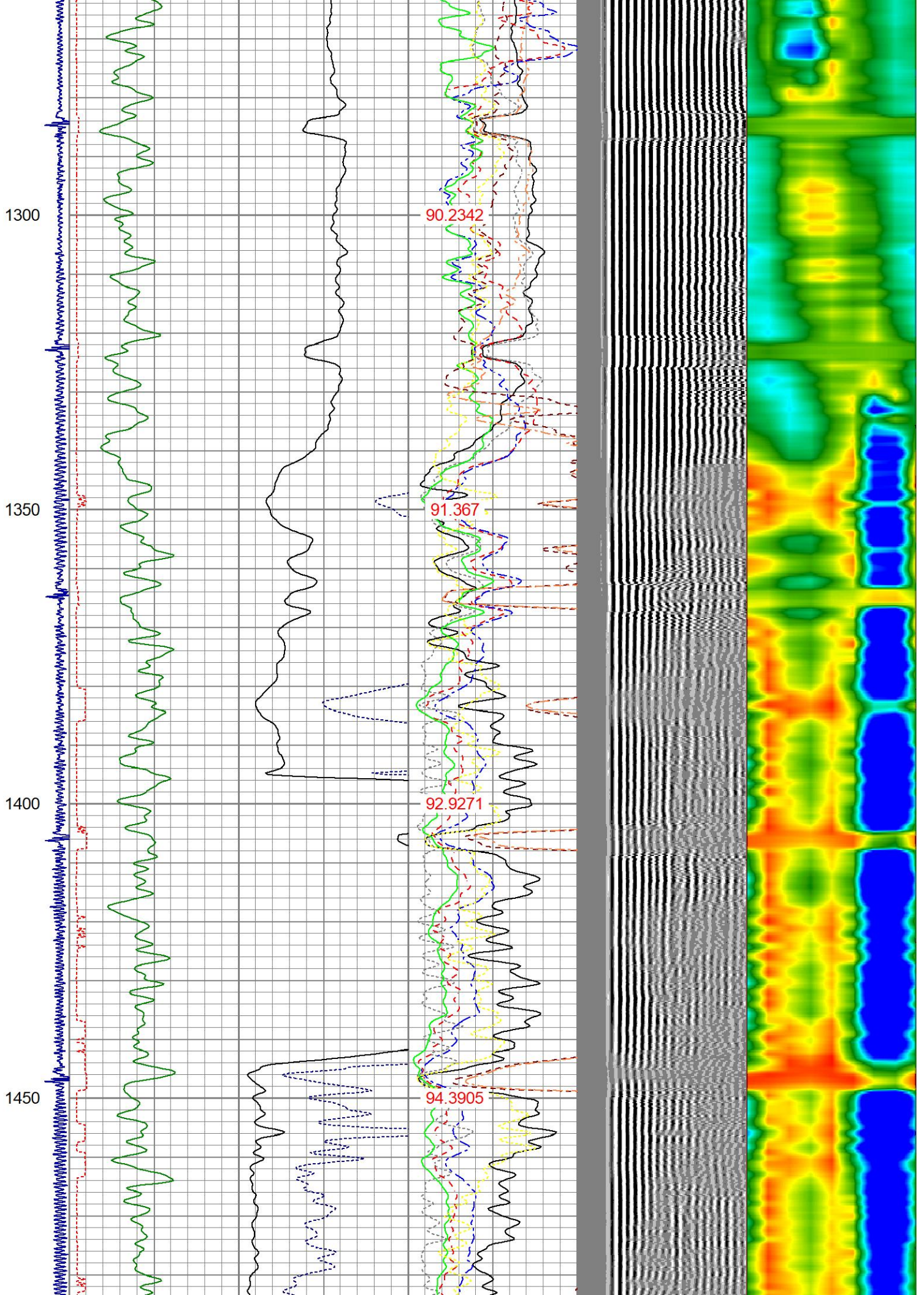


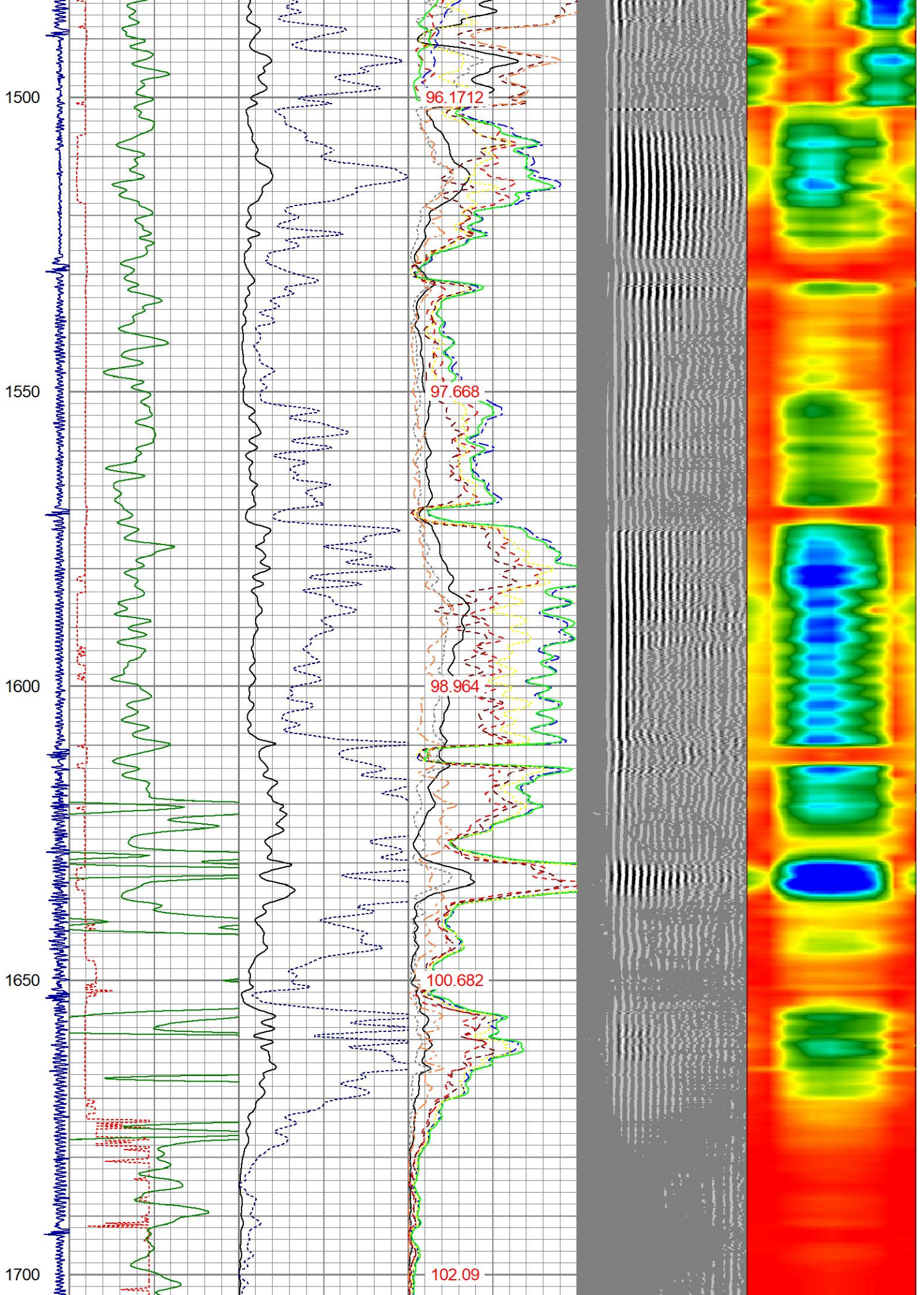


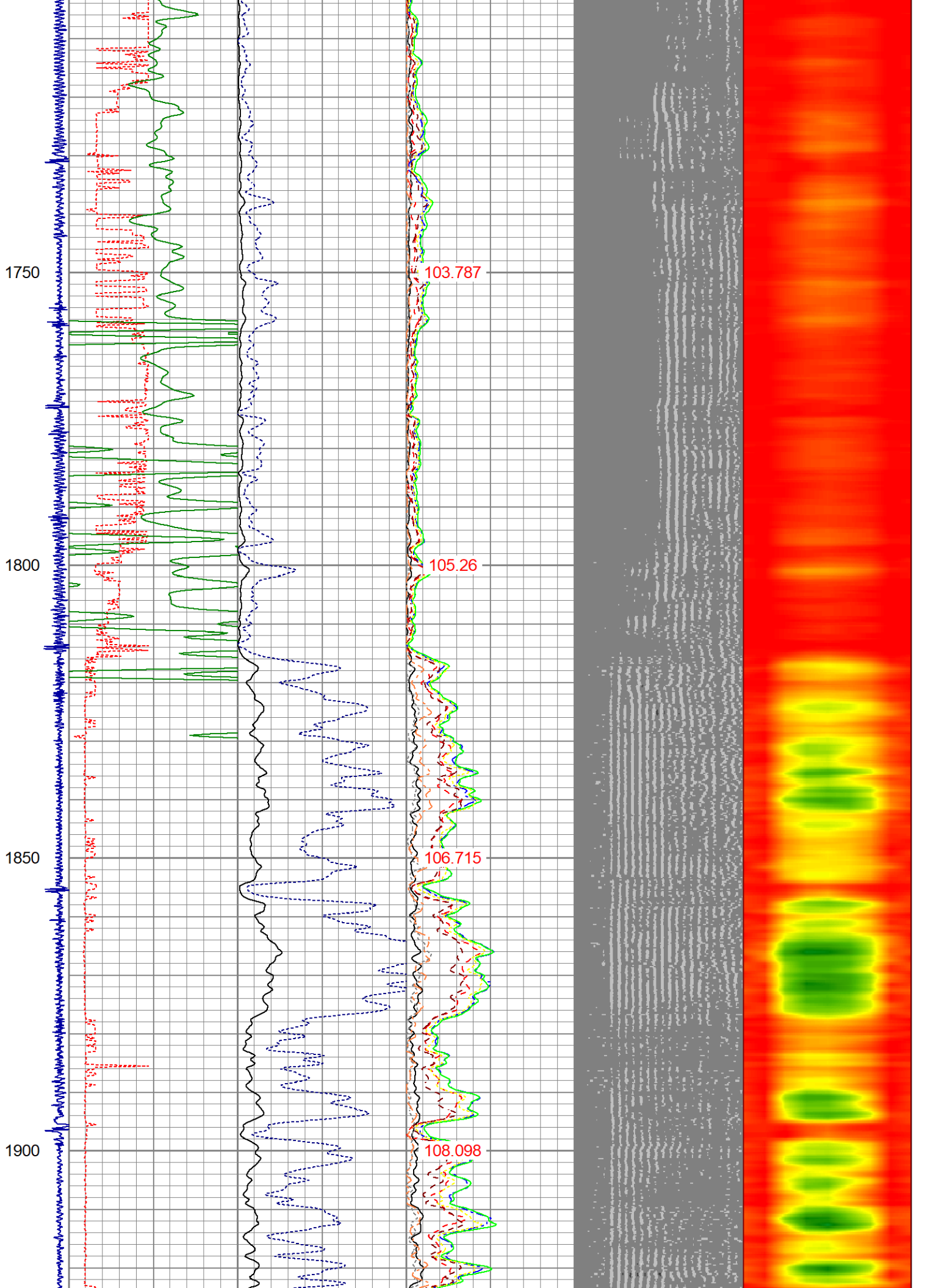


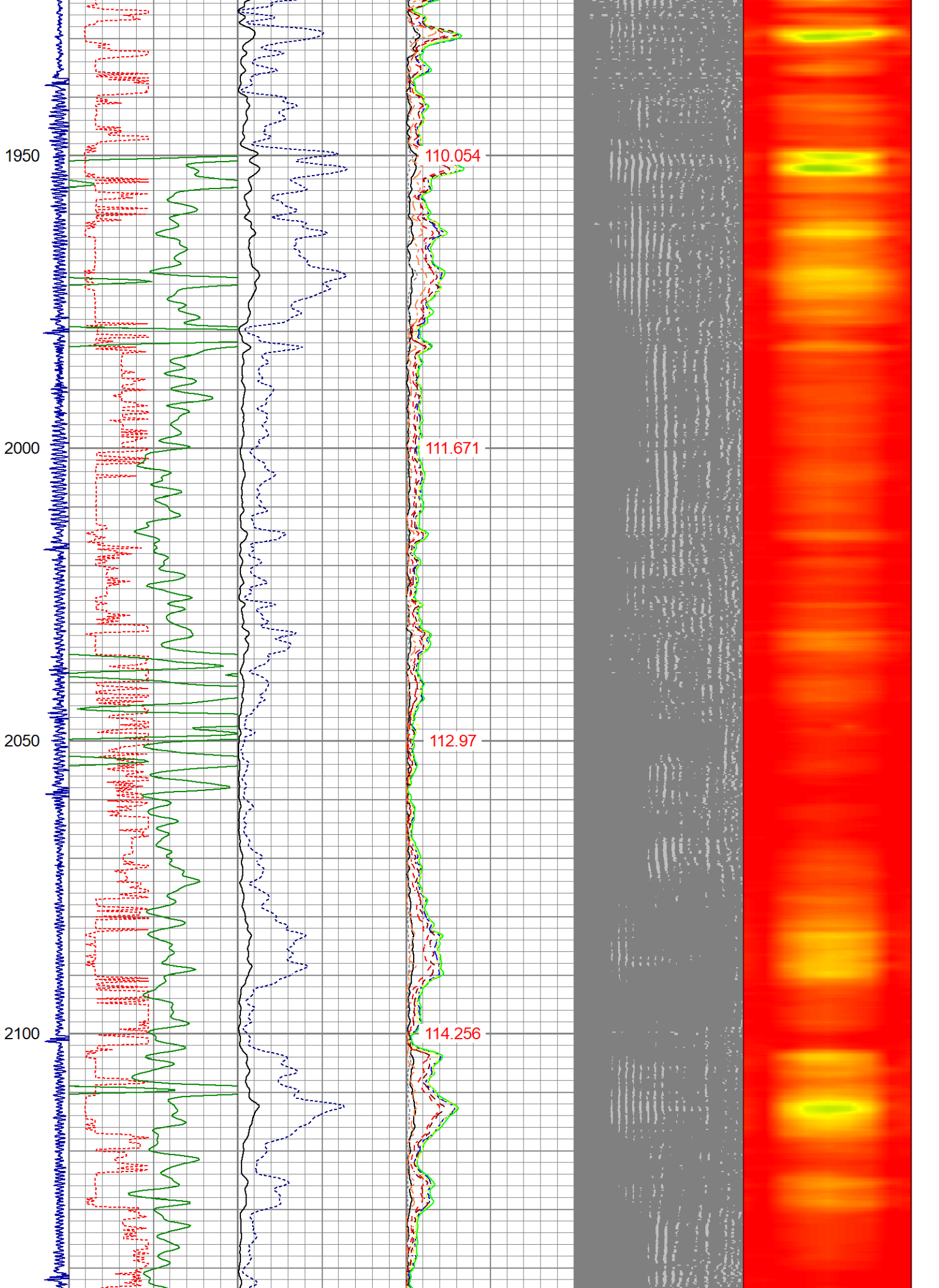


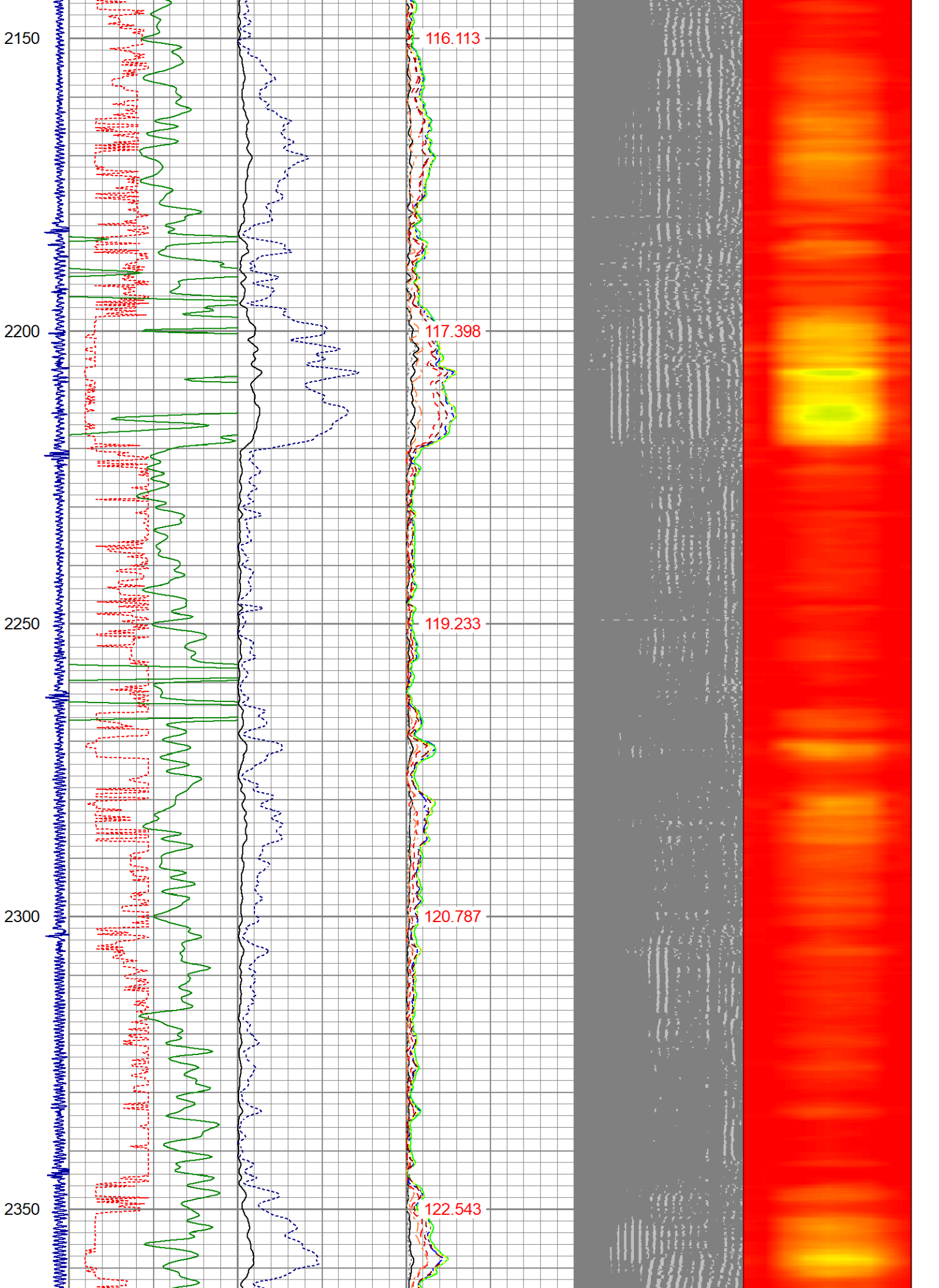


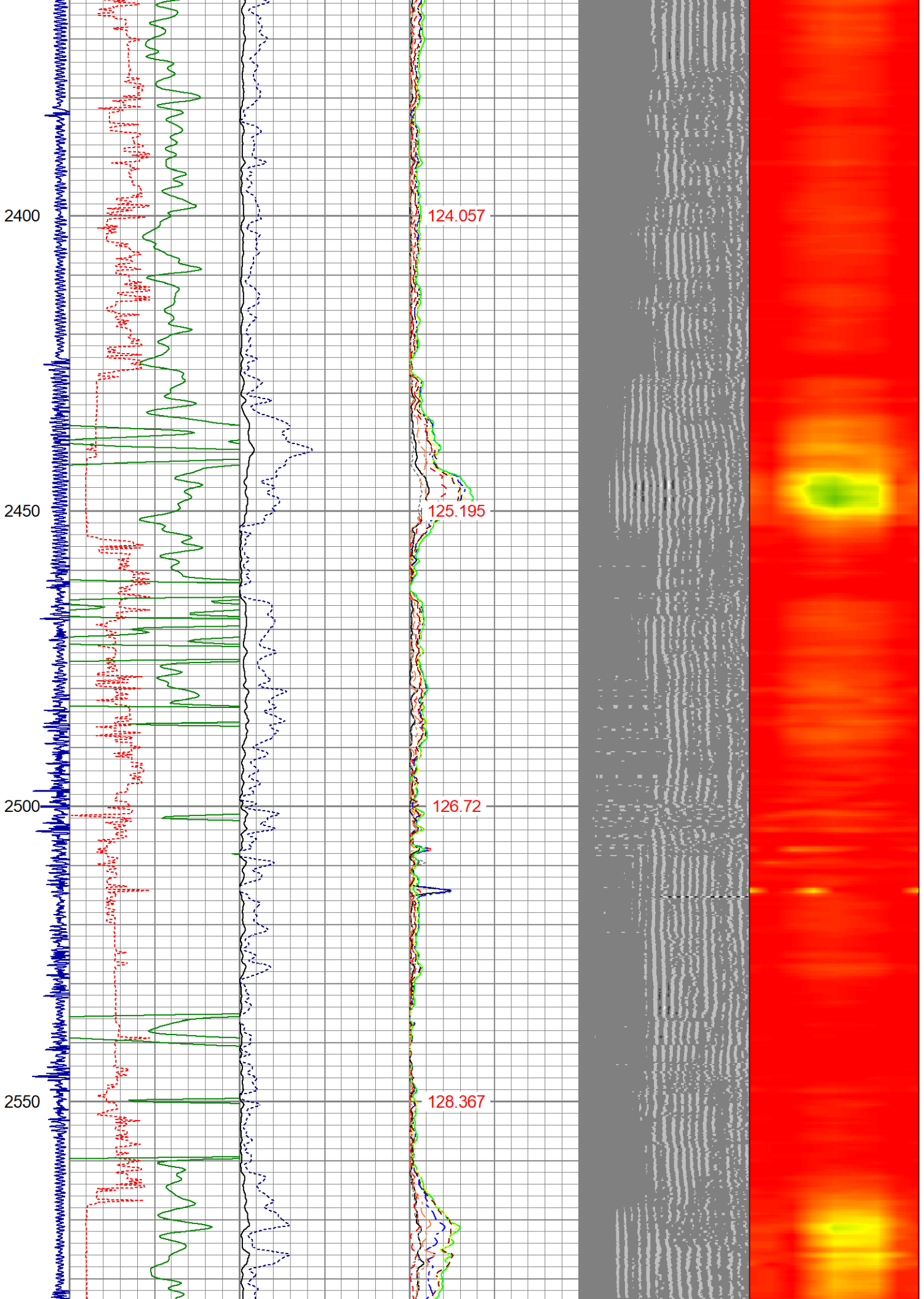


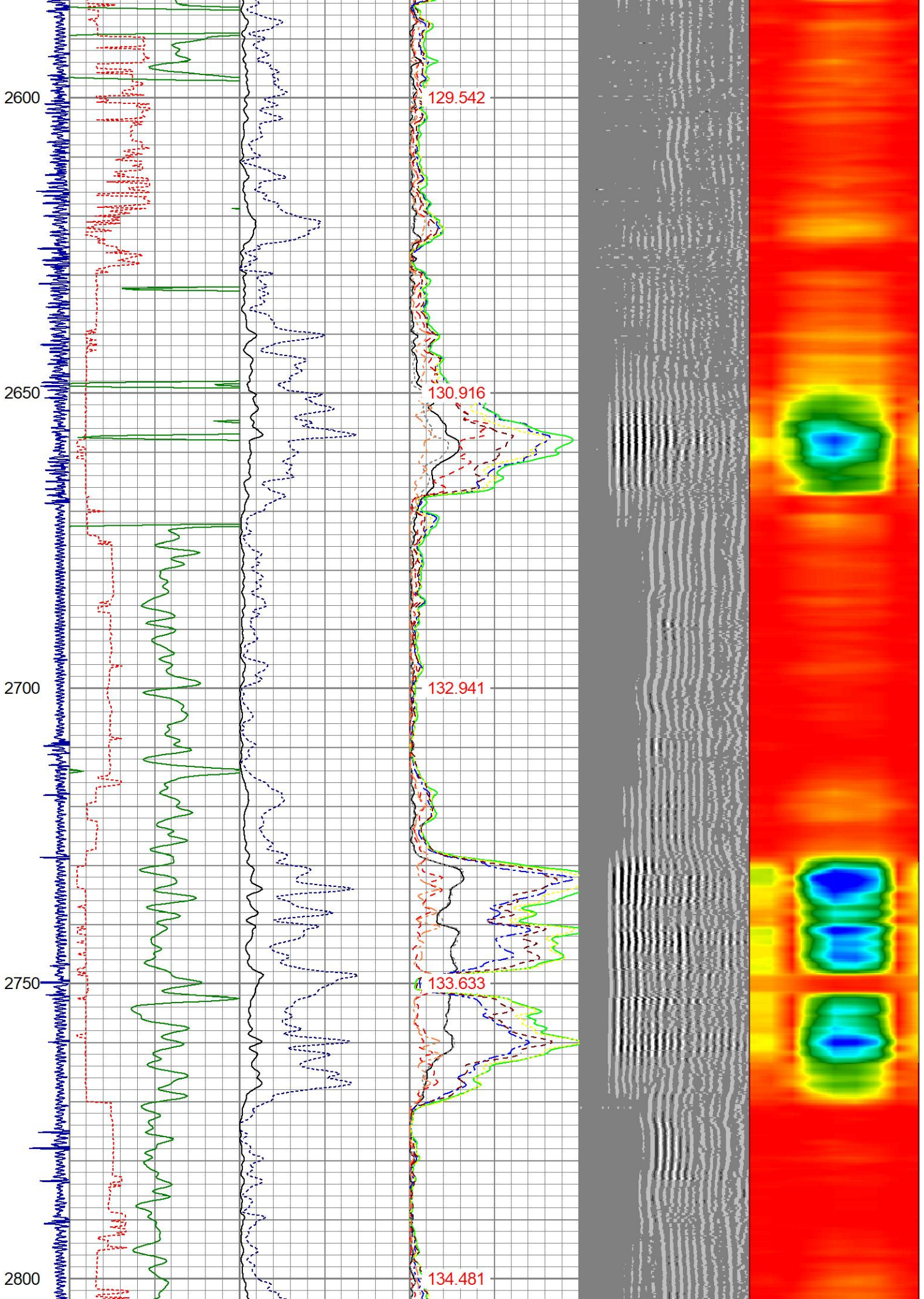


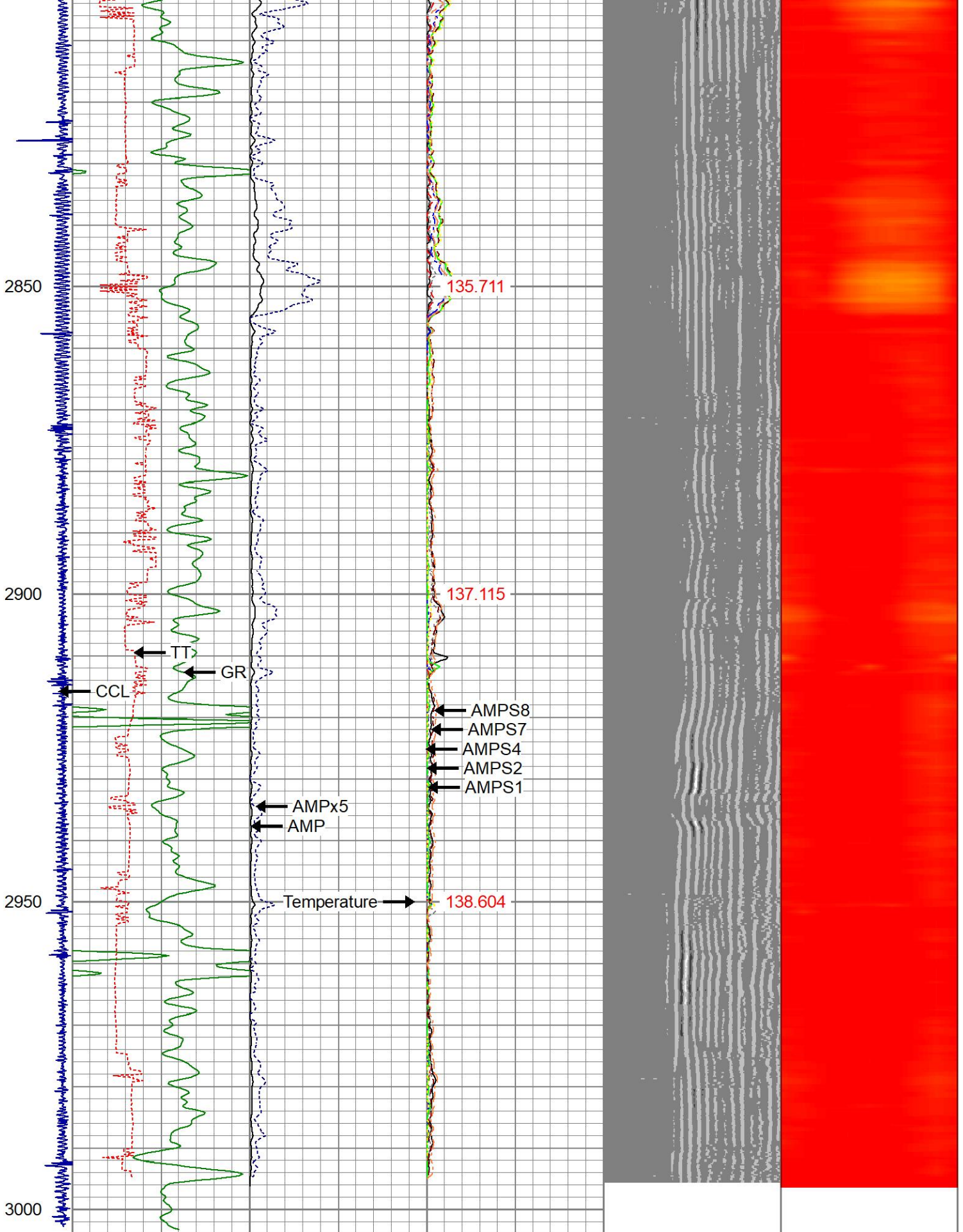












-9	CCL	1	200	TT (usec)	1000	0	AMP (mV)	100	0	AMPS1	100	200	VDL (usec)	1200	1	Cement Map	8
	LSPD		0	GR (GAPI)	200	0	AMPx5 (mV)	20	0	AMPS2	100						
	(ft/min)		200	GR (GAPI)	400					AMPS3	100						
0	250									AMPS4	100						



0	AMPS4	100
0	AMPS5	100
0	AMPS6	100
0	AMPS7	100
0	AMPS8	100
TEMP		
(degF)		

**Calibration Report**

Database File      glover usx b15-02cd.db  
Dataset Pathname    pass6  
Dataset Creation    Fri Dec 10 08:07:38 2021

**Gamma Ray Calibration Report**

Serial Number:            27GRL10-XXXX  
Tool Model:                27GRL10  
Performed:                (Not Performed)

Calibrator Value:        1.0                        GAPI

Background Reading:     0.0                        cps  
Calibrator Reading:      1.0                        cps

Sensitivity:                1.0000                  GAPI/cps

**Segmented Cement Bond Log Calibration Report**

Serial Number:            Greeley Ext Temp  
Tool Model:                27SBT10

Calibration Casing Diameter:    4.500                    in  
Calibration Depth:            540.000                ft

Master Calibration, performed Fri Dec 10 08:01:29 2021:

	Raw (v)		Calibrated (mv)		Results	
	Zero	Cal	Zero	Cal	Gain	Offset
3'	0.013	0.799	1.000	81.196	102.016	-0.326
CAL	0.000	0.811				
5'	0.012	0.781	1.000	81.196	104.303	-0.261
SUM						
S1	0.011	0.808	0.000	81.196	101.987	-1.165
S2	0.012	0.819	0.000	81.196	100.532	-1.189
S3	0.014	0.813	0.000	81.196	101.619	-1.379
S4	0.016	0.811	0.000	81.196	102.126	-1.644
S5	0.013	0.818	0.000	81.196	100.912	-1.358
S6	0.014	0.810	0.000	81.196	102.071	-1.460
S7	0.015	0.794	0.000	81.196	104.164	-1.535
S8	0.013	0.801	0.000	81.196	103.118	-1.370

Internal Reference Calibration, performed (Not Performed):

	Raw (v)		Calibrated (v)		Results	
	Zero	Cal	Zero	Cal	Gain	Offset
CAL	0.000	0.000	0.000	0.811	1.000	0.000

	Raw (v)	Calibrated (v)	Results
	Zero	Zero	Offset
3'	0.000	0.000	0.000
5'	0.000	0.000	0.000
SUM			
S1	0.000	0.000	0.000
S2	0.000	0.000	0.000
S3	0.000	0.000	0.000
S4	0.000	0.000	0.000
S5	0.000	0.000	0.000
S6	0.000	0.000	0.000
S7	0.000	0.000	0.000
S8	0.000	0.000	0.000



Company	CHEVRON	
Well	GLOVER USX B15-02 CD	
Field	WATTENBERG	
County	WELD	
State	CO	Country USA