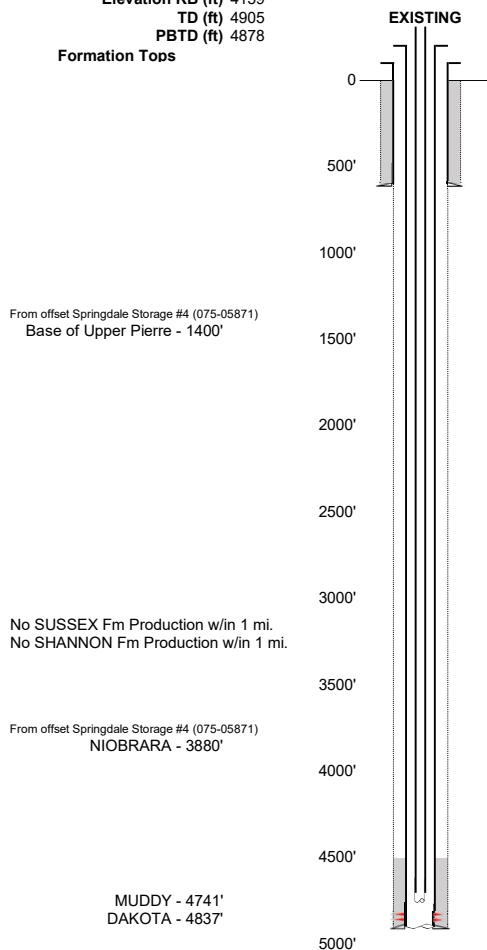


SPRINGDALE PARTNERS LLC - 10487
SPRINGDALE STORAGE #1

Prepared DTA 3/28/2024
QC MRH

API # 075-05869 Loc. # 312149
FIELD NAME SPRINGDALE - #78300
Spud Date 9/28/1953
Basin DENVER - JULESBURG
Location NENW 15 8N 53W 6
Elevation GL (ft) 4149
Elevation KB (ft) 4159
TD (ft) 4905
PBTD (ft) 4878
Formation Tops



Existing Casing and Cement Coverage
SURF: Size: 8.625", Hole Size: UNK
Depth: 614 ft., Weight: UNK
Cement: 275 sx, Top: 0 ft., Method: Vis

Deepest DWR w/in 1 mi. = 420'

Base of Upper Pierre - 1400'

1ST, Size: 5.5", Hole Size: 7.875"
Depth: 4905', Weight: UNK
Cement: 100 sx, TOC: 4500', Method: CALC by ECMC

2" tubing set at 4780'
TOC = 4500' (CALC by ECMC)
DKTA Perfs 4840' - 4847'
PBTD (ft) 4878'
TD (ft) 4905'

