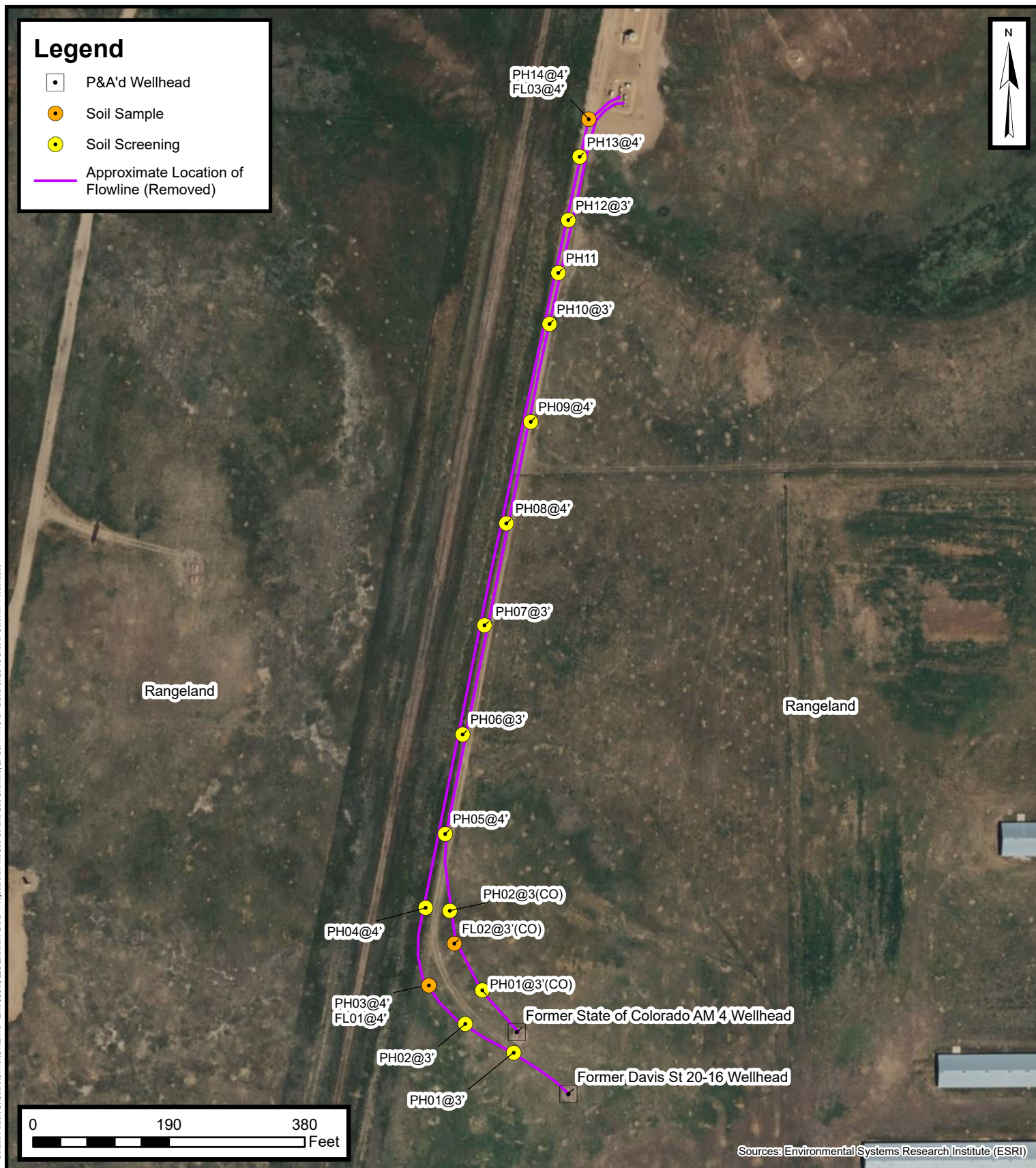


Default Folder: C:\Users\Owner\OneDrive - ENSOLUM, LLC\Ensolum GIS\ - Projects\Kerr-McGee Oil and Gas Onshore, LP\09A1417519 - Davis St 20-16 & St of Colo AM 4 Wellheads



## Flowline Excavation Site Map

Davis St 20-16 & St of Colo AM 4 Wellheads  
Kerr-McGee Oil and Gas Onshore, LP  
NWSE SEC 16-T3N-R67W  
Weld County, Colorado

Project Number: 09A1417519