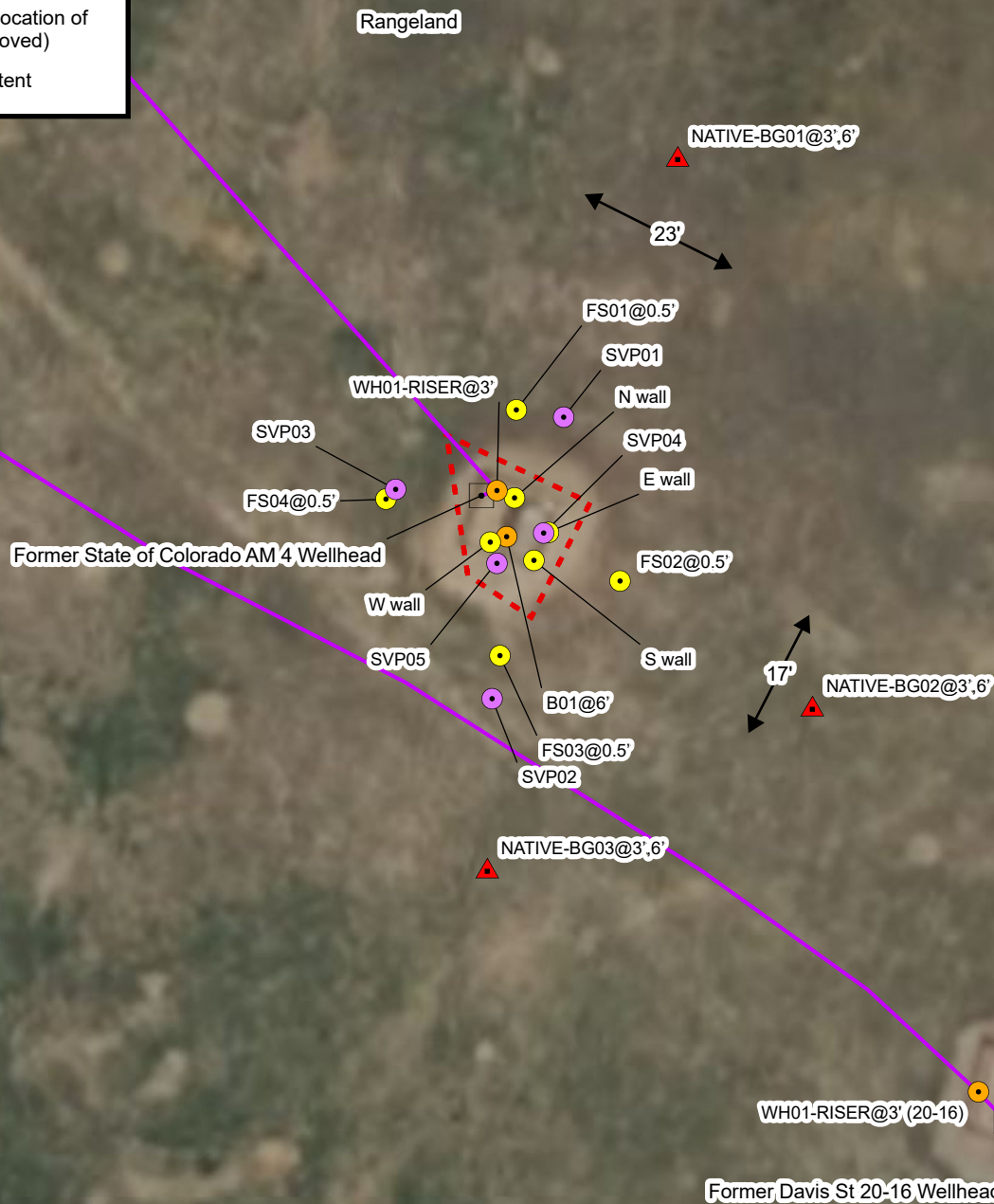


## Legend

- P&A'd Wellhead
- Background Soil Sample
- Soil Sample
- Soil Screening
- Soil Vapor Point (SVP)
- Approximate Location of Flowline (Removed)
- Excavation Extent



0 25 50  
Feet

Sources: Environmental Systems Research Institute (ESRI)



## Wellhead Excavation Site Map

Davis St 20-16 & St of Colo AM 4 Wellheads  
Kerr-McGee Oil and Gas Onshore, LP  
NWSE SEC 16-T3N-R67W  
Weld County, Colorado

Project Number: 09A1417519

FIGURE

1