

ATTACHMENT B



WELLHEAD ABANDONMENT FORM

SITE NAME: Eckhardt 34-1 Wellhead							DATE: 3/10/2023	REM. PROJECT #:	WEATHER: Cloudy, 50's
SITE DIRECTIONS: CR 50 and CR57 N 0.25 W 0.125 S Into							CLIENT: PDC		
LEGALS AND LAT/LONG: (40.3540238, -104.5334620)							TASMAN PERSONNEL: AO		
SOIL TYPES: Poorly Graded Sand - SP							SURFACE GRADIENT: Southwest		
SOIL SAMPLING							FACILITY INFRASTRUCTURE		
Date/Time	Soil Sample ID	PID (ppm)	Visual	Olfactory	Photo?	Grab or Lab Sample?	EQUIPMENT	Quantity	
							Above Ground Storage Tank (AST)		
3/13/2023 14:00	FL01-01@4'	0.2	No Staining	No Odor	Yes	Lab	Buried or Partially Buried Vessel		
3/13/2023 14:10	FL01-02@4'	0.3	No Staining	No Odor	Yes	Lab	Separator		
3/13/2023 14:20	FL01-03@4'	2.7	Organic Content	Organic Odor	Yes	Lab	Emission Control Device (ECD)		
3/13/2023 14:30	FL01-04@4'	0.1	No Staining	No Odor	Yes	Lab	Dump Line		
3/14/2023 10:50	FL01-05@4'	0.3	No Staining	No Odor	Yes	Grab	Wellhead	1	
3/14/2023 10:40	FL01-06@4'	0.1	No Staining	No Odor	Yes	Lab	Flowline	1	
3/14/2023 11:00	FL01-07@4'	0.0	No Staining	No Odor	Yes	Lab	Other:		
							Soil Loads Removed		
							IMPACTED SOIL IDENTIFIED?		
							ESTIMATED VOLUME OF IMPACTS:		
							Date	Number	CY
							3/10/2023	1	9
							Total Removed	1	9
3/10/2023 13:35	WH01-B@7'	1102	HC Staining	Strong HC Odor	Yes	Lab	Disposal Facility: WM - Ault		
3/10/2023 12:50	GS01 @ 2'	948	HC Staining	Strong HC Odor	Yes	Grab	Groundwater Recovery		
3/10/2023 13:45	WH01-N@6'	2.6	No Staining	No Odor	Yes	On-Hold	DATE GW ENCOUNTERED:	DEPTH:	
3/10/2023 13:40	WH01-S@6'	1474	HC Staining	Strong HC Odor	Yes	Lab	GROUNDWATER IN CONTACT WITH IMPACTED SOIL?		
3/10/2023 13:50	WH01-E@6'	19.4	No Staining	No Odor	Yes	On-Hold			
3/11/2023 14:00	WH01-W@6'	11.2	No Staining	No Odor	Yes	On-Hold	LNAPL OR SHEEN OBSERVED ON GW?		
GROUNDWATER SAMPLING							Date	BBLs	
Date/Time	Groundwater Sample ID	Depth Collected	Turbid?	Sheen?	Odor?	Photo?			
							Total Removed	0	
							Disposal Facility:		

GENERAL OBSERVATION FORM

Client: PDC

Site Area/AOC: Eckhardt 34-1 Wellhead

Date: 3/13/2023

Task/Location Description: Flowline and Wellhead Decommissioning

Daily Forecast/Weather: Sunny, 30's, Clear

Personnel: AO

Description of Activities:

Time	Description
	Arrived on Site, completed JSA
	Unique site conditions led to changes in the sampling plan.
	Due to the flowline running underneath the adjacent homeowners property longer sections of flowline had to be pulled.
	This limitation led to changed in the pothole locations.
	One pothole was placed to the east of the homeowners property boundary.
	Another pothole was placed in a gap in vegetation along the property boundary.
	A third pothole was placed at the eastern edge of the Drainage inlet and another along the western edge of the drainage inlet
	Per conversation with the landowner the drainage inlet was used for flood irrigation and runoff of irrigation in the adjoining southern field. This N/S inlet does fill with water from the E/W irrigation ditch, thus both samples on either side were submitted as laboratory samples per conversations with Tasman personnel.
	Due to the limitations of the flowline abandonment the locations had to be changed, however the number remained constant
	Additionally the flowline will be abandoned in place from the northern edge of the E/W irrigation ditch along to the wellhead per landowner request.
	A sample was unable to be collected from the major direction change due to a large berm being present onsite directly above the proposed sample location. Additionally, due to the nature of the site, the flowline had to be pulled using a large dozer and ample space to allow work to occur was required - as such, the samples were collected from the potholes where the roustabout crew cut and pulled the flowlines from.

Photographic Log





Equipment ID:		Equipment Type:		Equipment ID:		Equipment Type:	
Material:	Volume:	Contents:		Material:	Volume:	Contents:	
Notes/Conditions: GS01				Notes/Conditions: Top to Bottom: WH01-S, WH01-B			

Photographic Log



Equipment ID:		Equipment Type:		Equipment ID:		Equipment Type:	
Material:	Volume:	Contents:		Material:	Volume:	Contents:	
Notes/Conditions: LEft to Right: WH01-E, WH01-N				Notes/Conditions: WH01-W			

Photographic Log

					
Equipment ID:		Equipment Type:	Equipment ID:		Equipment Type:
Material:	Volume:	Contents:	Material:	Volume:	Contents:
Notes/Conditions: FL01-05			Notes/Conditions: FL01-06		

Photographic Log



Equipment ID:		Equipment Type:	
Material:	Volume:	Contents:	
Notes/Conditions: FL01-07			

Equipment ID:		Equipment Type:	
Material:	Volume:	Contents:	
Notes/Conditions: FL01-01			

Photographic Log



Equipment ID:		Equipment Type:	
Material:	Volume:	Contents:	
Notes/Conditions: FL01-02			

Equipment ID:		Equipment Type:	
Material:	Volume:	Contents:	
Notes/Conditions: FL01-03 Heavy Organic Staining /Organic Odor			

Photographic Log


Equipment ID:		Equipment Type:		Equipment ID:		Equipment Type:	
Material:	Volume:	Contents:		Material:	Volume:	Contents:	
Notes/Conditions: FL01-04				Notes/Conditions:			



SITE NAME: Eckhardt 34-1 Wellhead							DATE: 1/8/2024	REM. PROJECT #: 25882	WEATHER: 20s, partly cloudy, windy		
SITE DIRECTIONS: CR 55 & CR 52, E 0.5 mi, head 0.5 mi S into site, E 0.1 mi, S 0.1 mi into site							CLIENT: PDC				
LEGALS AND LAT/LONG: 40.354014, -104.533377							TASMAN PERSONNEL: EB				
SOIL TYPES: Silty Sand - SM							SURFACE GRADIENT: South				
SOIL SAMPLING							FACILITY INFRASTRUCTURE				
Date/Time	Soil Sample ID	PID (ppm)	Visual	Olfactory	Photo?	Grab or Lab Sample?	EQUIPMENT		Quantity		
							Above Ground Storage Tank (AST)				
							Buried or Partially Buried Vessel				
1/9/2024 14:46	SS01 @ 20'	2.7	No Staining	No Odor	Yes	Lab	Separator				
1/10/2024 09:30	SS02 @ 6'	1.3	No Staining	No Odor	Yes	Lab	Emission Control Device (ECD)				
1/10/2024 09:35	SS03 @ 12'	1.3	No Staining	No Odor	Yes	Lab	Dump Line				
1/10/2024 09:40	SS04 @ 18'	0.8	No Staining	No Odor	Yes	Lab	Wellhead				
1/10/2024 09:45	SS05 @ 6'	1.2	No Staining	No Odor	Yes	Lab	Flowline				
1/10/2024 09:50	SS06 @ 12'	1.3	No Staining	No Odor	Yes	Lab	Other:				
1/10/2024 09:55	SS07 @ 18'	1.3	No Staining	No Odor	Yes	Lab	Soil Loads Removed				
1/10/2024 11:55	SS08 @ 6'	0.0	No Staining	No Odor	Yes	Lab	IMPACTED SOIL IDENTIFIED? <small>Yes</small>				
1/10/2024 12:00	SS09 @ 12'	0.2	No Staining	No Odor	Yes	Lab	ESTIMATED VOLUME OF IMPACTS:				
1/10/2024 12:05	SS10 @ 18'	0.1	No Staining	No Odor	Yes	Lab	Date	Number	CY		
1/10/2024 09:20	SS11 @ 6'	1.0	No Staining	No Odor	Yes	Lab	1/8/2024	9	90		
1/10/2024 09:22	SS12 @ 12'	1.7	No Staining	No Odor	Yes	Lab	1/9/2024	14	140		
1/10/2024 09:25	SS13 @ 18'	1.5	No Staining	No Odor	Yes	Lab	1/10/2024	12	120		
1/10/2024 09:15	SS14 @ 2.5'	1.4	No Staining	No Odor	Yes	Lab	1/11/2024	1	10		
1/10/2024 11:40	SS15 @ 6'	0.8	No Staining	No Odor	Yes	Lab	Total Removed		36	360	
1/10/2024 11:45	SS16 @ 12'	3.4	HC Staining	Slight HC Odor	Yes	Lab	Disposal Facility: WM - Ault				
1/10/2024 11:50	SS17 @ 18'	1.8	No Staining	No Odor	Yes	Lab	Groundwater Recovery				
1/10/2024 13:15	SS18 @ 6'	0.3	No Staining	No Odor	Yes	Lab	DATE GW ENCOUNTERED: 1/10/2024	DEPTH: 16'			
1/10/2024 13:20	SS19 @ 12'	0.3	No Staining	No Odor	Yes	Lab	GROUNDWATER IN CONTACT WITH IMPACTED SOIL? Groundwater in contact with soil impacts.				
1/10/2024 13:25	SS20 @ 18'	0.7	No Staining	No Odor	Yes	Lab					
1/10/2024 14:15	SS21 @ 2.5'	0.3	No Staining	No Odor	Yes	Lab	LNAPL OR SHEEN OBSERVED ON GW? None Observed on GW.				
GROUNDWATER SAMPLING							Date		BBLs		
Date/Time	Groundwater Sample ID	Depth Collected	Turbid?	Sheen?	Odor?	Photo?					
1/10/2024 08:42	GW01	18	Medium Turbidity	None	None	Yes					
							Total Removed		0		
							Disposal Facility:				



SITE NAME: Eckhardt 34-1 Wellhead							DATE: 1/10/2024	REM. PROJECT #: 25882	WEATHER: 30s sunny	
SITE DIRECTIONS:							CLIENT: PDC			
LEGALS AND LAT/LONG:							TASMAN PERSONNEL: EB			
SOIL TYPES: Silty Sand - SM							SURFACE GRADIENT: South			
SOIL SAMPLING							FACILITY INFRASTRUCTURE			
Date/Time	Soil Sample ID	PID (ppm)	Visual	Olfactory	Photo?	Grab or Lab Sample?	EQUIPMENT		Quantity	
							Above Ground Storage Tank (AST)			
1/10/2024 14:20	SS22 @ 2.5'	0.2	No Staining	No Odor	Yes	Lab	Buried or Partially Buried Vessel			
1/10/2024 14:25	SS23 @ 2.5'	0.2	No Staining	No Odor	Yes	Lab	Separator			
1/10/2024 14:42	BKG01 @ 2.5'	0.1	No Staining	No Odor	Yes	Lab	Emission Control Device (ECD)			
1/10/2024 14:45	BKG01 @ 6'	0.3	No Staining	No Odor	Yes	Lab	Dump Line			
1/10/2024 14:50	BKG01 @ 12'	0.8	No Staining	No Odor	Yes	Lab	Wellhead			
1/10/2024 14:55	BKG01 @ 15'	0.8	No Staining	No Odor	Yes	Lab	Flowline			
1/10/2024 15:02	BKG02 @ 2.5'	0.4	No Staining	No Odor	Yes	Lab	Other:			
1/10/2024 15:06	BKG02 @ 6'	0.6	No Staining	No Odor	Yes	Lab	Soil Loads Removed			
1/10/2024 15:12	BKG02 @ 12'	0.9	No Staining	No Odor	Yes	Lab	IMPACTED SOIL IDENTIFIED?			
1/10/2024 15:14	BKG02 @ 15'	1.4	No Staining	No Odor	Yes	Lab	ESTIMATED VOLUME OF IMPACTS:			
1/11/2024 08:54	SS24 @ 20'	1.1	No Staining	No Odor	Yes	Lab	Date	Number	CY	
1/11/2024 09:12	SS25 @ 20'	2.2	No Staining	No Odor	Yes	Lab				
1/11/2024 09:16	SS26 @ 20'	0.8	No Staining	No Odor	Yes	Lab				
							Total Removed		0	0
							Disposal Facility:			
							Groundwater Recovery			
							DATE GW ENCOUNTERED:		DEPTH:	
							GROUNDWATER IN CONTACT WITH IMPACTED SOIL?			
							LNAPL OR SHEEN OBSERVED ON GW?			
GROUNDWATER SAMPLING							Date	BBLs		
Date/Time	Groundwater Sample ID	Depth Collected	Turbid?	Sheen?	Odor?	Photo?				
							Total Removed		0	
							Disposal Facility:			

Photographic Log



Equipment ID:			Equipment Type:			Equipment ID: ss01			Equipment Type:		
Material:		Volume:		Contents:		Material:		Volume:		Contents:	
Notes/Conditions:						Notes/Conditions:					

Photographic Log



Equipment ID: GW01		Equipment Type:	
Material:	Volume:	Contents:	
Notes/Conditions:			

Equipment ID: SS02		Equipment Type:	
Material:	Volume:	Contents:	
Notes/Conditions:			

Photographic Log



Equipment ID: SS03		Equipment Type:		Equipment ID: SS04		Equipment Type:	
Material:	Volume:	Contents:		Material:	Volume:	Contents:	
Notes/Conditions:				Notes/Conditions:			

Photographic Log



Equipment ID: SS05		Equipment Type:		Equipment ID: SS06		Equipment Type:	
Material:	Volume:	Contents:		Material:	Volume:	Contents:	
Notes/Conditions:				Notes/Conditions:			

Photographic Log



Equipment ID: SS07		Equipment Type:	
Material:	Volume:	Contents:	
Notes/Conditions:			

Equipment ID: SS08		Equipment Type:	
Material:	Volume:	Contents:	
Notes/Conditions:			

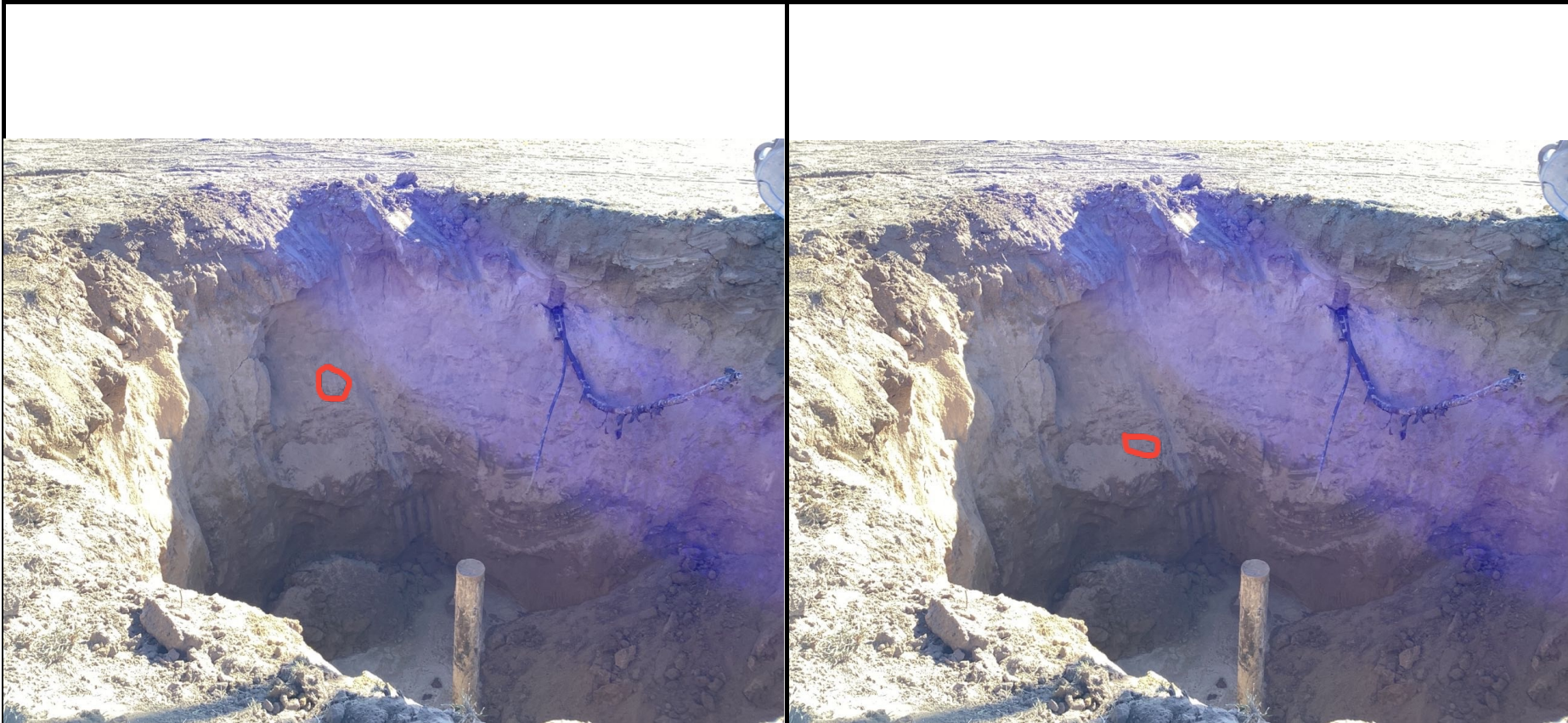
Photographic Log


Equipment ID:SS09

Equipment Type:
Material:
Volume:
Contents:
Notes/Conditions:
Equipment ID:SS10

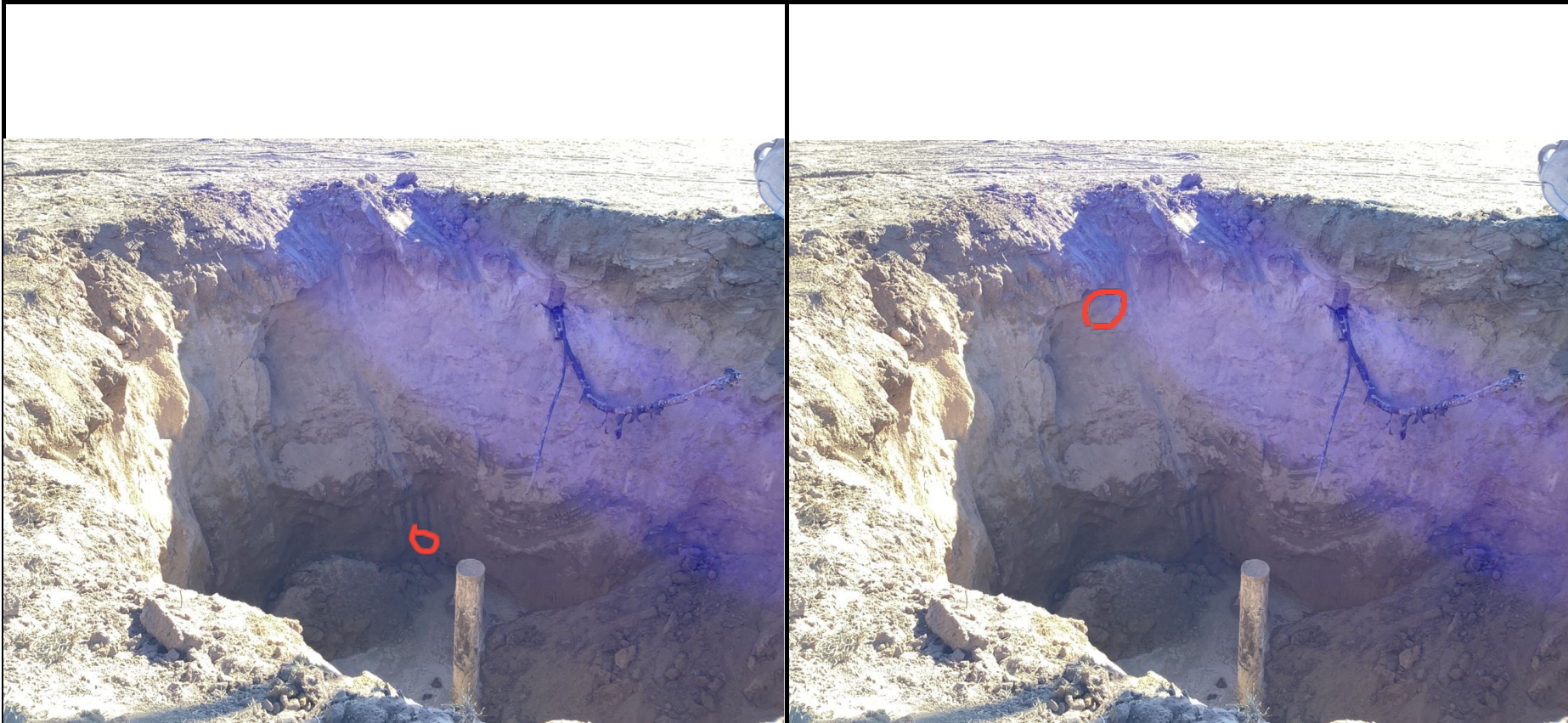
Equipment Type:
Material:
Volume:
Contents:
Notes/Conditions:

Photographic Log



Equipment ID: SS11		Equipment Type:		Equipment ID: SS12		Equipment Type:	
Material:	Volume:	Contents:		Material:	Volume:	Contents:	
Notes/Conditions:				Notes/Conditions:			

Photographic Log



Equipment ID: SS13		Equipment Type:		Equipment ID: SS14		Equipment Type:	
Material:	Volume:	Contents:		Material:	Volume:	Contents:	
Notes/Conditions:				Notes/Conditions:			

Photographic Log


Equipment ID: SS15		Equipment Type:		Equipment ID: SS16		Equipment Type:	
Material:	Volume:	Contents:		Material:	Volume:	Contents:	
Notes/Conditions:				Notes/Conditions:			

Photographic Log



Equipment ID: SS17		Equipment Type:	
Material:	Volume:	Contents:	
Notes/Conditions:			

Equipment ID: SS18		Equipment Type:	
Material:	Volume:	Contents:	
Notes/Conditions:			

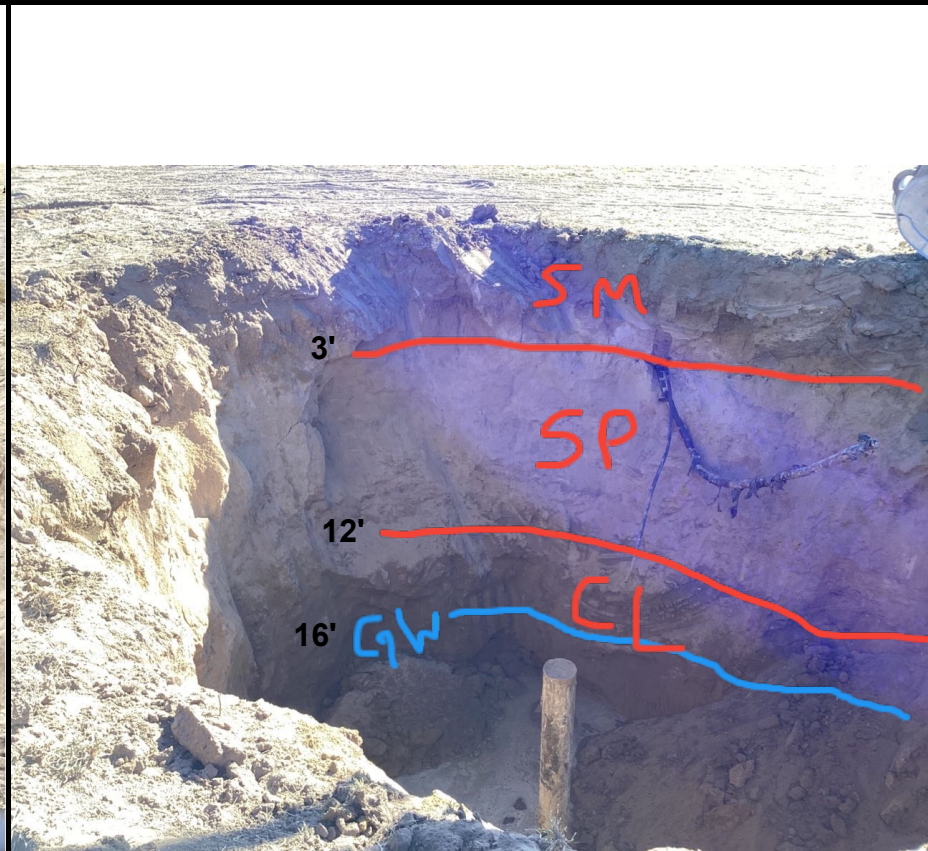
Photographic Log


Equipment ID:SS19

Equipment Type:
Material:
Volume:
Contents:
Notes/Conditions:
Equipment ID:SS20

Equipment Type:
Material:
Volume:
Contents:
Notes/Conditions:

Photographic Log



Equipment ID:SS21

Equipment Type:

Material:

Volume:

Contents:

Notes/Conditions:

Equipment ID:Soil horizon

Equipment Type:

Material:

Volume:

Contents:

Notes/Conditions: 0-3: Silty sand, 3-12': Fine grained sand, 12-20': Sandy clay

Photographic Log

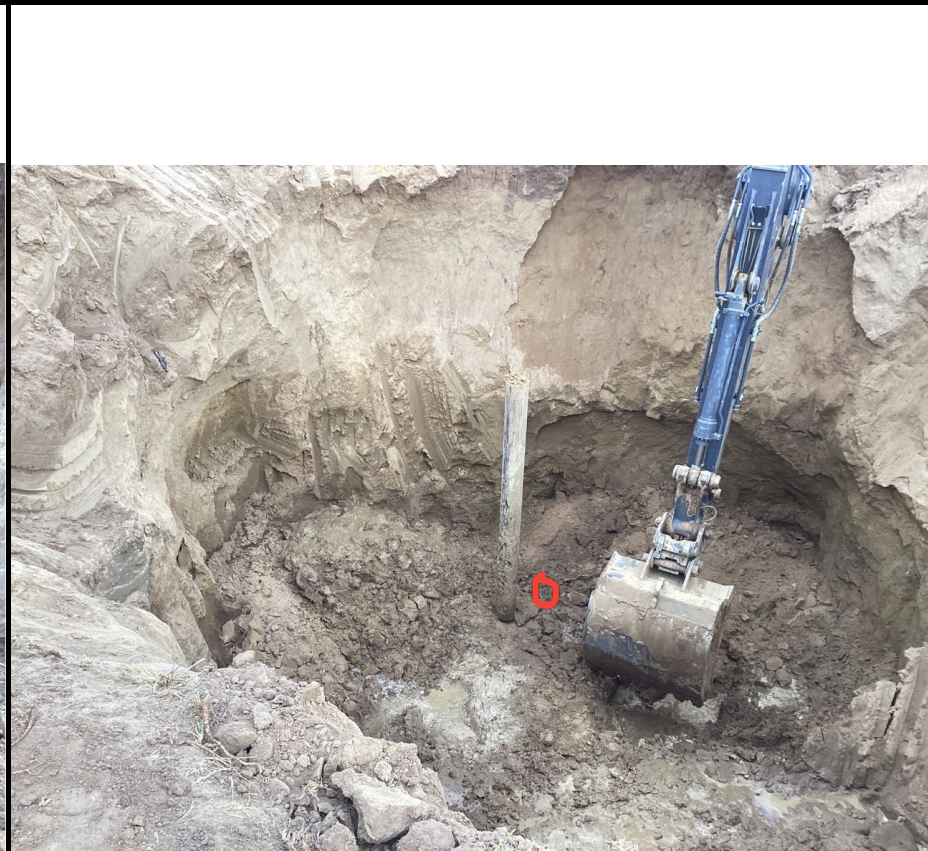


Equipment ID: SS22		Equipment Type:		Equipment ID: SS23		Equipment Type:	
Material:	Volume:	Contents:		Material:	Volume:	Contents:	
Notes/Conditions:				Notes/Conditions:			

Photographic Log

					
<p>Material:</p>	<p>Volume:</p>	<p>Contents:</p>	<p>Material:</p>	<p>Volume:</p>	<p>Contents:</p>
<p>Notes/Conditions:</p>			<p>Notes/Conditions:</p>		

Photographic Log



Equipment ID: SS24		Equipment Type:	
Material:	Volume:	Contents:	
Notes/Conditions:			

Equipment ID: SS25		Equipment Type:	
Material:	Volume:	Contents:	
Notes/Conditions:			

Photographic Log


Equipment ID: SS26		Equipment Type:		Equipment ID:		Equipment Type:	
Material:	Volume:	Contents:		Material:	Volume:	Contents:	
Notes/Conditions:				Notes/Conditions:			