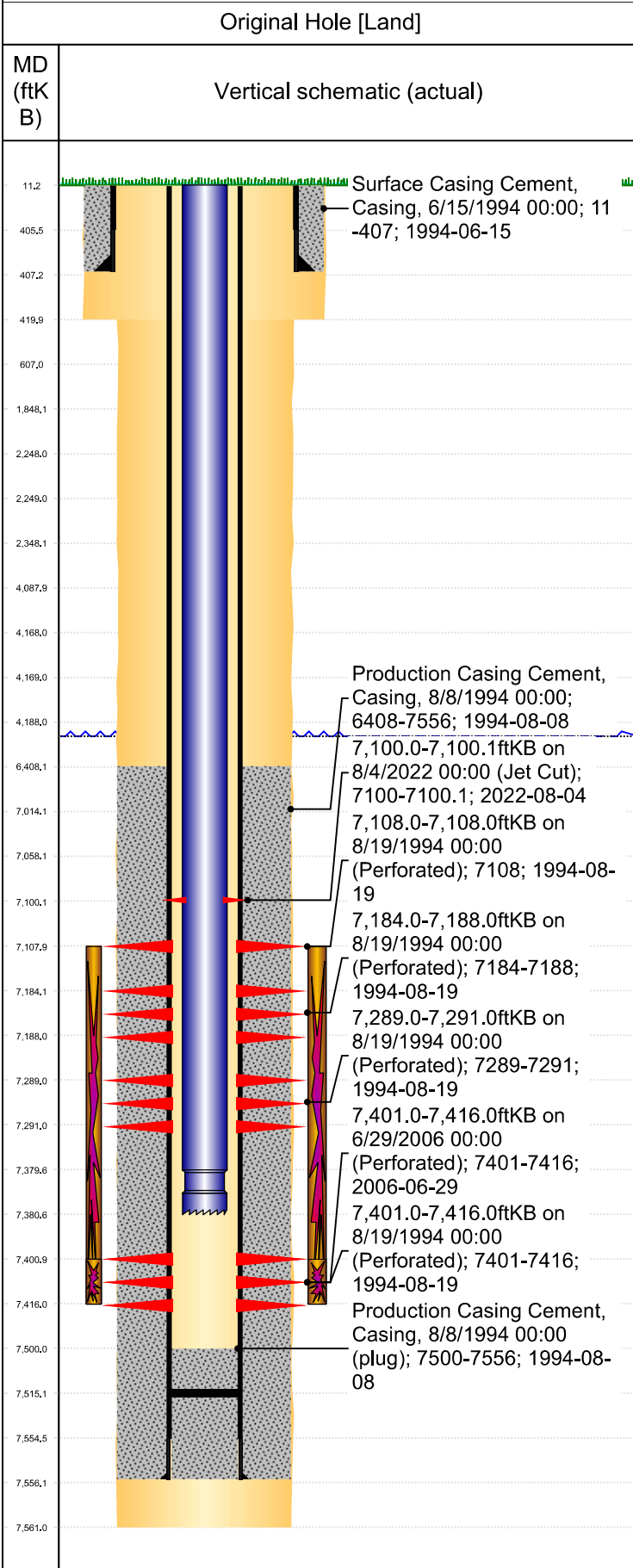




P&A Wellbore For State

Well Name: UPRC 23-1117



Well Header									
Surface UWI 0512318312		Business Unit Rockies		Gov Auth Dist		Prod Tree Loc Land			
Orig. KB to Gnd (ft) 11.00		Original Spud Date 6/14/1994		Abandon Date		Well Sub-Status SI		High...	
								N	
Comment DIRECTIONAL, Cdl frac'd into 5/2/00 when 23-617 NO OPEN HOLE LOGS JET CUT TBG @7,100.0', TBG DID NOT FALL TO PLUG BACK 8/4/2022									
Surface Location (Congressional)									
Qtr 3 SE	Qtr 4 SW	Section 23	Twnshp 4	Twnsh... N	Range 67	Rng E/... W	Latitude (°) 40.29386276 9	Longitude (°) -104.85940678	
Wellbore Sections									
Section Des		Hole Size (in)		Top Depth (ftKB)		Btm Depth (ftKB)			
SURFACE		11		11.0		420.0			
PRODUCTION		7 7/8		420.0		7,561.0			
Casing Strings									
Csg Des		Run Date		OD (in)		Wt/Len (lb/ft)		Grade	
Surface		6/14/1994		8 5/8		24.00		?	
Production Casing		8/8/1994		3 1/2		7.70		B-70	
								Top Depth (MD) (ftKB) 11	
								Set Depth (MD) (ftKB) 407	
								7556	
Cement									
Des		Start Date		Top (ftKB)		Btm (ftKB)			
SURFACE CASING CEMENT		6/15/1994		11.0		407.0			
PRODUCTION CASING CEMENT		8/8/1994		6,408.0		7,556.0			
Zone Statuses									
Zone Name		Status Date		Status		Fluid Type		Job	
NIOBRARA-CO...		6/8/2009		PR		Water		DRILLING/COMPLETION - ORIGINAL, 6/14/1994...	
NIOBRARA		9/15/1994		PR				DRILLING/COMPLETION - ORIGINAL, 6/14/1994...	
NIOBRARA		6/8/2009		PR				DRILLING/COMPLETION - ORIGINAL, 6/14/1994...	
CODELL		7/18/2006		PR				DRILLING/COMPLETION - ORIGINAL, 6/14/1994...	
CODELL		6/8/2009		PR				DRILLING/COMPLETION - ORIGINAL, 6/14/1994...	
								Prod Method Flowing	
								Flowing	
								Flowing	
								Flowing	
Perforation Data									
Linked Zone		Explosive Type		Entered Shot Total		Top (ftKB)		Btm (ftKB)	
NIOBRARA, Original Hole		A		1		7,100.0		7,100.1	
NIOBRARA, Original Hole		B		3		7,108.0		7,108.0	
NIOBRARA, Original Hole		C		2		7,184.0		7,188.0	
CODELL, Original Hole				9		7,289.0		7,291.0	
CODELL, Original Hole				60		7,401.0		7,416.0	
								7,416.0	
								6/29/2006	
Stim/Frac Stage									
Zone		Start Date		Top (ftKB)		Btm (ftKB)			
NIOBRARA-CODELL, Original Hole		8/23/1994		7,108.0		7,416.0			
CODELL, Original Hole		7/17/2006		7,401.0		7,416.0			
Other In Hole									
Run Date		Des		Make		OD (in)		Top (ftKB)	
								Btm (ftKB)	
Logs									
Date		Type		Depth Top (MD) (ftKB)		Btm (ftKB)			
8/13/1994		CEMENT BOND		11		7,495.0			
9/24/2012		GYRO		11		7,250.0			
Wellbore Plug Back Total Depths									
Date		Type		Com		PBTD (ftKB)			
1/28/2013		FILL				7,515			
5/16/2013		FILL		TAG FILL W/ PROD TBG.		7,515			