

CRESTONE PEAK RESOURCES

ARAPAHOE COUNTY

SEC 30-T4S-R64W

CHICO 4-65 25-26 3BH

OWB

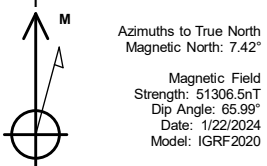
Design: FINAL SURVEY

Standard Survey Report

25 January, 2024

Project: ARAPAHOE COUNTY
Site: SEC 30-T4S-R64W
Well: CHICO 4-65 25-26 3BH
Wellbore: OWB
Design: FINAL SURVEY

PROJECT DETAILS: ARAPAHOE COUNTY
Geodetic System: US State Plane 1983
Datum: North American Datum 1983
Ellipsoid: GRS 1980
Zone: Colorado Central Zone
System Datum: Mean Sea Level

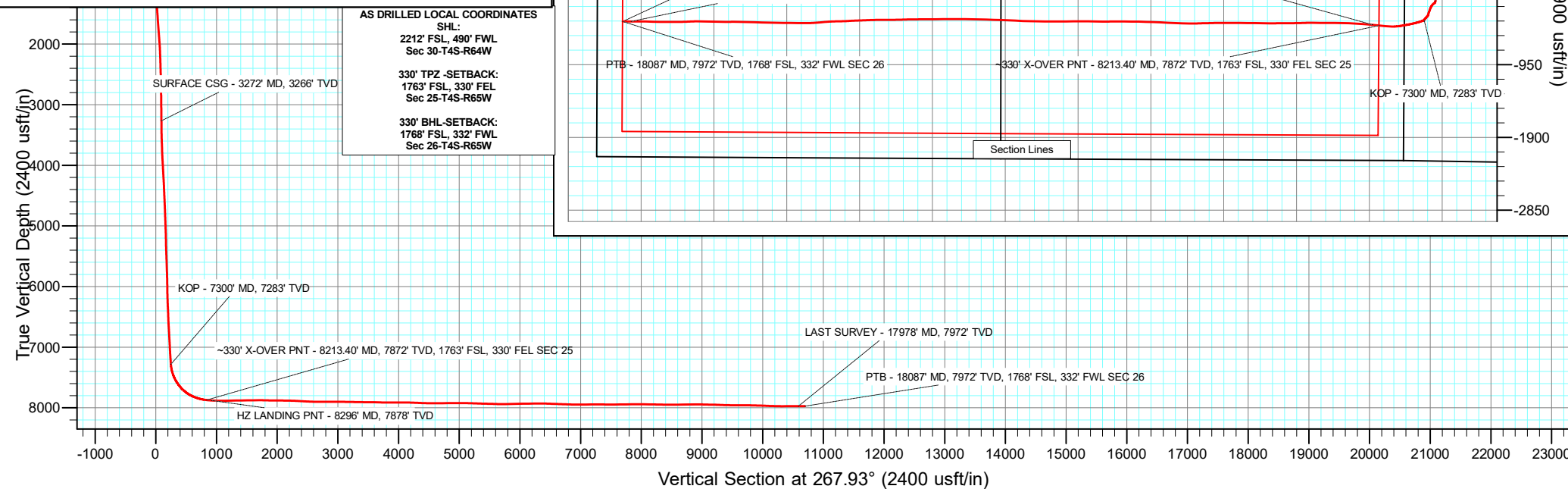
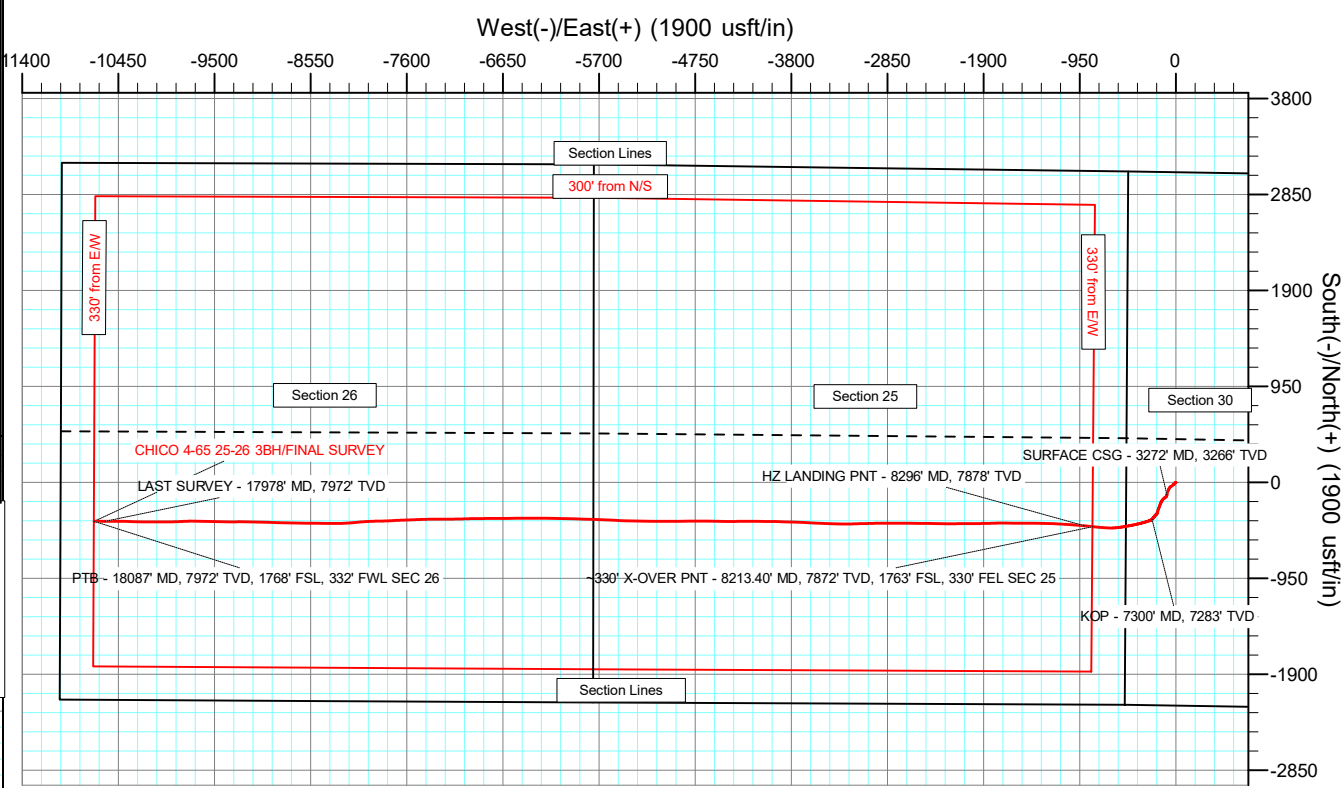
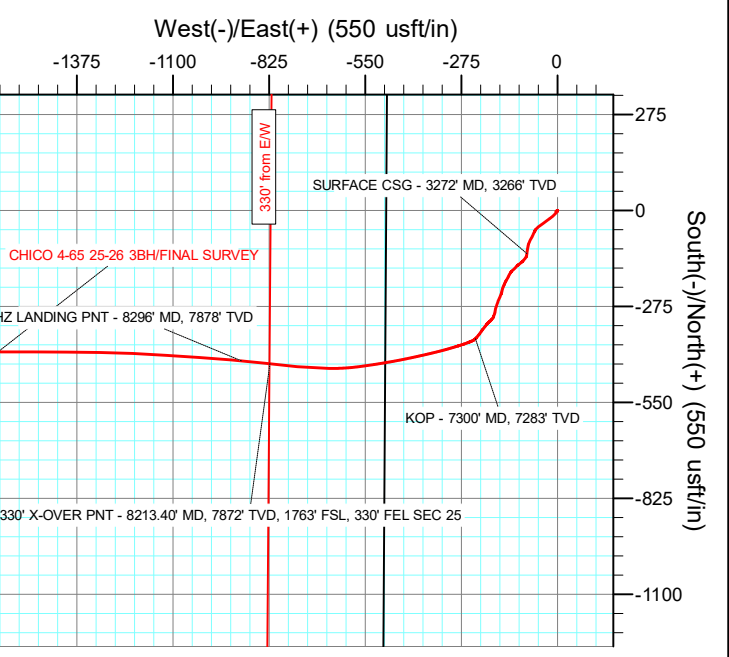


WELL DETAILS: CHICO 4-65 25-26 3BH

ANNOTATIONS

+N/-S	+E/-W	Northing	Easting	Latitude	Longitude	Slot
0.00	0.00	1671377.52	3252836.87	39.673298°N	104.601775°W	

MD	Inc	Azi	TVD	+N/-S	+E/-W	Vsect	Departure	Annotation
3272.00	2.69	188.65	3266.29	-123.12	-87.55	91.95	170.65	SURFACE CSG - 3272' MD, 3266' TVD
7300.00	6.21	227.54	7283.25	-367.91	-234.48	247.63	464.48	KOP - 7300' MD, 7283' TVD
8213.40	84.15	276.59	7871.97	-439.59	-822.54	837.90	1063.53	~330' X-OVER PNT - 8213.40' MD, 7872' TVD, 1763' FSL, 330' FEL SEC 25
8296.00	86.19	275.17	7878.40	-430.84	-904.42	919.41	1145.80	HZ LANDING PNT - 8296' MD, 7878' TVD
17978.00	89.70	269.99	7971.83	-386.81	-10580.15	10587.21	10825.36	LAST SURVEY - 17978' MD, 7972' TVD
18087.00	89.70	269.99	7972.40	-386.83	-10689.14	10696.14	10934.36	PTB - 18087' MD, 7972' TVD, 1768' FSL, 332' FWL SEC 26



Civitas Resources

Survey Report

Company:	CRESTONE PEAK RESOURCES	Local Co-ordinate Reference:	Well CHICO 4-65 25-26 3BH
Project:	ARAPAHOE COUNTY	TVD Reference:	KBE 25' @ 5792.00usft
Site:	SEC 30-T4S-R64W	MD Reference:	KBE 25' @ 5792.00usft
Well:	CHICO 4-65 25-26 3BH	North Reference:	True
Wellbore:	OWB	Survey Calculation Method:	Minimum Curvature
Design:	FINAL SURVEY	Database:	EDM

Project	ARAPAHOE COUNTY		
Map System:	US State Plane 1983	System Datum:	Mean Sea Level
Geo Datum:	North American Datum 1983		
Map Zone:	Colorado Central Zone		Using geodetic scale factor

Site		SEC 30-T4S-R64W					
Site Position:		Northing:	1,669,168.52	usft	Latitude:	39.667247°N	
From:	Lat/Long	Easting:	3,252,354.22	usft	Longitude:	104.603567°W	
Position Uncertainty:	0.00	usft	Slot Radius:	13.200	in	Grid Convergence:	0.57 °

Well	CHICO 4-65 25-26 3BH					
Well Position	+N/-S	0.00 usft	Northing:	1,671,377.52 usft	Latitude:	39.673298°N
	+E/-W	0.00 usft	Easting:	3,252,836.87 usft	Longitude:	104.601775°W
Position Uncertainty		0.00 usft	Wellhead Elevation:	usft	Ground Level:	5,767.00 usft

Wellbore	OWB				
Magnetics	Model Name	Sample Date	Declination (°)	Dip Angle (°)	Field Strength (nT)
	IGRF2020	1/22/2024	7.42	65.99	51,306.46173412

Design	FINAL SURVEY				
Audit Notes:					
Version:	1.0	Phase:	ACTUAL	Tie On Depth:	0.00
Vertical Section:	Depth From (TVD) (usft)	+N/-S (usft)	+E/-W (usft)	Direction (°)	
	0.00	0.00	0.00		267.93

Survey Program	Date	1/25/2024			
From (usft)	To (usft)	Survey (Wellbore)	Tool Name	Description	
212.00	3,134.00	SURFACE SURVEY (OWB)	MWD OWSG	OWSG MWD - Standard	
3,298.00	18,087.00	FINAL SURVEY (OWB)	MWD OWSG	OWSG MWD - Standard	

Survey										
Measured Depth (usft)	Inclination (°)	Azimuth (°)	Vertical Depth (usft)	+N/-S (usft)	+E/-W (usft)	Vertical Section (usft)	Dogleg Rate (°/100ft)	Build Rate (°/100ft)	Turn Rate (°/100ft)	
0.00	0.00	0.00	0.00	0.00	0.00	0.00	0.00	0.00	0.00	
212.00	1.28	233.82	211.98	-1.40	-1.91	1.96	0.60	0.60	0.00	
303.00	1.10	229.89	302.96	-2.56	-3.40	3.49	0.22	-0.20	-4.32	
394.00	0.40	267.44	393.95	-3.14	-4.39	4.50	0.90	-0.77	41.26	
485.00	0.31	319.70	484.95	-2.96	-4.86	4.97	0.35	-0.10	57.43	
578.00	0.97	65.08	577.95	-2.44	-4.31	4.40	1.18	0.71	113.31	
673.00	1.06	60.76	672.93	-1.67	-2.81	2.87	0.12	0.09	-4.55	
767.00	1.64	69.53	766.91	-0.78	-0.80	0.82	0.65	0.62	9.33	
862.00	0.35	69.05	861.89	-0.20	0.75	-0.74	1.36	-1.36	-0.51	
957.00	1.94	214.43	956.88	-1.42	0.11	-0.06	2.35	1.67	153.03	

Civitas Resources

Survey Report

Company:	CRESTONE PEAK RESOURCES	Local Co-ordinate Reference:	Well CHICO 4-65 25-26 3BH
Project:	ARAPAHOE COUNTY	TVD Reference:	KBE 25' @ 5792.00usft
Site:	SEC 30-T4S-R64W	MD Reference:	KBE 25' @ 5792.00usft
Well:	CHICO 4-65 25-26 3BH	North Reference:	True
Wellbore:	OWB	Survey Calculation Method:	Minimum Curvature
Design:	FINAL SURVEY	Database:	EDM

Survey									
Measured Depth (usft)	Inclination (°)	Azimuth (°)	Vertical Depth (usft)	+N/-S (usft)	+E/-W (usft)	Vertical Section (usft)	Dogleg Rate (°/100ft)	Build Rate (°/100ft)	Turn Rate (°/100ft)
1,051.00	3.23	217.51	1,050.78	-4.83	-2.40	2.57	1.38	1.37	3.28
1,145.00	3.62	223.64	1,144.61	-9.08	-6.06	6.39	0.57	0.41	6.52
1,240.00	3.89	224.69	1,239.41	-13.54	-10.40	10.88	0.29	0.28	1.11
1,334.00	3.89	231.66	1,333.19	-17.79	-15.14	15.77	0.50	0.00	7.41
1,429.00	4.20	232.80	1,427.95	-21.89	-20.44	21.22	0.34	0.33	1.20
1,524.00	5.04	235.00	1,522.64	-26.39	-26.63	27.57	0.90	0.88	2.32
1,617.00	5.04	232.54	1,615.28	-31.22	-33.22	34.33	0.23	0.00	-2.65
1,713.00	4.82	233.68	1,710.93	-36.17	-39.82	41.10	0.25	-0.23	1.19
1,807.00	4.77	233.55	1,804.60	-40.83	-46.14	47.59	0.05	-0.05	-0.14
1,902.00	5.61	233.15	1,899.21	-45.96	-53.03	54.66	0.89	0.88	-0.42
1,997.00	5.88	224.08	1,993.73	-52.24	-60.13	61.98	1.00	0.28	-9.55
2,092.00	5.08	205.22	2,088.31	-59.54	-65.31	67.42	2.06	-0.84	-19.85
2,186.00	4.20	203.28	2,182.00	-66.47	-68.45	70.81	0.95	-0.94	-2.06
2,281.00	4.02	206.54	2,276.75	-72.65	-71.31	73.89	0.31	-0.19	3.43
2,375.00	3.40	208.08	2,370.56	-78.05	-74.09	76.87	0.67	-0.66	1.64
2,471.00	3.00	210.28	2,466.41	-82.73	-76.70	79.64	0.44	-0.42	2.29
2,566.00	2.87	203.41	2,561.28	-87.06	-78.90	82.00	0.39	-0.14	-7.23
2,661.00	2.87	204.47	2,656.16	-91.41	-80.83	84.08	0.06	0.00	1.12
2,755.00	2.61	201.16	2,750.06	-95.55	-82.58	85.98	0.32	-0.28	-3.52
2,850.00	2.83	189.79	2,844.95	-99.88	-83.76	87.31	0.61	0.23	-11.97
2,945.00	3.54	188.65	2,939.80	-105.09	-84.60	88.34	0.75	0.75	-1.20
3,040.00	3.23	192.70	3,034.64	-110.60	-85.63	89.57	0.41	-0.33	4.26
3,134.00	3.36	187.24	3,128.48	-115.91	-86.55	90.69	0.36	0.14	-5.81
3,272.00	2.69	188.65	3,266.29	-123.12	-87.55	91.95	0.49	-0.49	1.02
SURFACE CSG - 3272' MD, 3266' TVD									
3,298.00	2.56	189.00	3,292.26	-124.30	-87.73	92.17	0.49	-0.49	1.34
3,393.00	2.61	181.15	3,387.16	-128.56	-88.11	92.70	0.38	0.05	-8.26
3,488.00	3.31	214.91	3,482.04	-132.97	-89.72	94.47	1.94	0.74	35.54
3,583.00	3.00	211.78	3,576.90	-137.33	-92.60	97.51	0.37	-0.33	-3.29
3,678.00	2.61	222.31	3,671.79	-141.04	-95.37	100.40	0.68	-0.41	11.08
3,773.00	2.43	224.03	3,766.69	-144.09	-98.22	103.37	0.21	-0.19	1.81
3,868.00	4.29	227.60	3,861.53	-147.94	-102.25	107.53	1.97	1.96	3.76
3,963.00	4.02	231.88	3,956.28	-152.39	-107.49	112.93	0.43	-0.28	4.51
4,057.00	3.31	234.65	4,050.09	-155.99	-112.29	117.86	0.78	-0.76	2.95
4,151.00	4.82	221.96	4,143.85	-160.50	-117.15	122.88	1.86	1.61	-13.50
4,245.00	4.15	224.69	4,237.56	-165.85	-122.18	128.10	0.75	-0.71	2.90
4,435.00	3.05	230.11	4,427.18	-173.98	-130.90	137.10	0.61	-0.58	2.85
4,530.00	4.37	209.80	4,521.99	-178.74	-134.63	141.01	1.94	1.39	-21.38
4,625.00	5.44	207.68	4,616.64	-185.87	-138.52	145.16	1.14	1.13	-2.23
4,720.00	4.33	208.78	4,711.29	-193.00	-142.34	149.23	1.17	-1.17	1.16
4,816.00	3.76	211.30	4,807.05	-198.87	-145.72	152.82	0.62	-0.59	2.62
4,910.00	5.08	205.74	4,900.77	-205.25	-149.13	156.46	1.47	1.40	-5.91
5,005.00	3.89	202.70	4,995.48	-212.02	-152.20	159.77	1.28	-1.25	-3.20

Civitas Resources

Survey Report

Company:	CRESTONE PEAK RESOURCES	Local Co-ordinate Reference:	Well CHICO 4-65 25-26 3BH
Project:	ARAPAHOE COUNTY	TVD Reference:	KBE 25' @ 5792.00usft
Site:	SEC 30-T4S-R64W	MD Reference:	KBE 25' @ 5792.00usft
Well:	CHICO 4-65 25-26 3BH	North Reference:	True
Wellbore:	OWB	Survey Calculation Method:	Minimum Curvature
Design:	FINAL SURVEY	Database:	EDM

Survey										
Measured Depth (usft)	Inclination (°)	Azimuth (°)	Vertical Depth (usft)	+N/-S (usft)	+E/-W (usft)	Vertical Section (usft)	Dogleg Rate (°/100ft)	Build Rate (°/100ft)	Turn Rate (°/100ft)	
5,099.00	5.26	203.63	5,089.17	-218.90	-155.16	162.97	1.46	1.46	0.99	
5,194.00	4.37	193.76	5,183.84	-226.41	-157.77	165.85	1.28	-0.94	-10.39	
5,289.00	3.71	190.19	5,278.60	-232.95	-159.17	167.49	0.74	-0.69	-3.76	
5,384.00	5.08	203.10	5,373.32	-239.84	-161.36	169.93	1.77	1.44	13.59	
5,479.00	4.82	201.29	5,467.97	-247.43	-164.46	173.30	0.32	-0.27	-1.91	
5,575.00	4.68	205.57	5,563.64	-254.72	-167.62	176.72	0.40	-0.15	4.46	
5,670.00	4.60	198.69	5,658.33	-261.83	-170.51	179.87	0.59	-0.08	-7.24	
5,764.00	4.68	199.27	5,752.02	-269.02	-172.99	182.60	0.10	0.09	0.62	
5,859.00	4.33	199.40	5,846.73	-276.06	-175.46	185.32	0.37	-0.37	0.14	
5,955.00	4.20	192.44	5,942.46	-282.91	-177.42	187.53	0.56	-0.14	-7.25	
6,049.00	3.84	185.61	6,036.23	-289.40	-178.47	188.82	0.64	-0.38	-7.27	
6,144.00	4.82	199.57	6,130.96	-296.33	-180.11	190.71	1.51	1.03	14.69	
6,239.00	4.33	197.94	6,225.66	-303.50	-182.56	193.41	0.53	-0.52	-1.72	
6,334.00	4.55	219.40	6,320.38	-309.83	-186.05	197.14	1.75	0.23	22.59	
6,428.00	3.36	225.44	6,414.16	-314.64	-190.38	201.64	1.34	-1.27	6.43	
6,522.00	2.12	224.21	6,508.05	-317.82	-193.56	204.92	1.32	-1.32	-1.31	
6,617.00	3.76	232.05	6,602.92	-321.00	-197.24	208.72	1.77	1.73	8.25	
6,711.00	5.61	217.47	6,696.60	-326.54	-202.46	214.14	2.33	1.97	-15.51	
6,806.00	4.33	218.83	6,791.24	-333.02	-207.54	219.45	1.35	-1.35	1.43	
6,901.00	5.52	218.35	6,885.89	-339.40	-212.62	224.76	1.25	1.25	-0.51	
6,995.00	4.11	214.21	6,979.56	-345.73	-217.32	229.68	1.54	-1.50	-4.40	
7,091.00	4.95	215.00	7,075.26	-351.97	-221.63	234.22	0.88	0.87	0.82	
7,186.00	6.32	220.37	7,169.80	-359.31	-227.37	240.22	1.54	1.44	5.65	
7,281.00	4.95	217.11	7,264.34	-366.56	-233.23	246.33	1.48	-1.44	-3.43	
7,300.00	6.21	227.54	7,283.25	-367.91	-234.48	247.63	8.48	6.63	54.89	
KOP - 7300' MD, 7283' TVD										
7,376.00	12.11	244.83	7,358.26	-374.08	-244.74	258.11	8.48	7.76	22.75	
7,471.00	20.11	251.44	7,449.46	-383.53	-269.28	282.98	8.63	8.42	6.96	
7,565.00	28.77	253.73	7,534.96	-395.03	-306.39	320.47	9.27	9.21	2.44	
7,660.00	36.32	256.47	7,614.99	-408.04	-355.76	370.29	8.10	7.95	2.88	
7,755.00	45.07	257.79	7,686.94	-421.76	-416.10	431.08	9.25	9.21	1.39	
7,851.00	53.56	260.17	7,749.47	-435.57	-487.50	502.93	9.04	8.84	2.48	
7,945.00	63.77	262.41	7,798.30	-447.63	-566.76	582.58	11.05	10.86	2.38	
8,039.00	70.92	270.52	7,834.53	-452.81	-653.21	669.15	11.00	7.61	8.63	
8,134.00	78.22	275.55	7,859.81	-447.89	-744.55	760.26	9.22	7.68	5.29	
8,213.40	84.15	276.59	7,871.97	-439.59	-822.54	837.90	7.58	7.47	1.31	
~330' X-OVER PNT - 8213.40' MD, 7872' TVD, 1763' FSL, 330' FEL SEC 25										
8,228.00	85.24	276.78	7,873.32	-437.90	-836.98	852.27	7.58	7.47	1.29	
8,296.00	86.19	275.17	7,878.40	-430.84	-904.42	919.41	2.75	1.40	-2.37	
HZ LANDING PNT - 8296' MD, 7878' TVD										
8,323.00	86.57	274.53	7,880.11	-428.56	-931.27	946.16	2.75	1.40	-2.37	
8,417.00	88.51	273.92	7,884.14	-421.65	-1,024.92	1,039.50	2.16	2.06	-0.65	
8,511.00	91.56	273.78	7,884.08	-415.34	-1,118.70	1,132.98	3.25	3.24	-0.15	
8,607.00	92.53	272.90	7,880.66	-409.75	-1,214.47	1,228.49	1.36	1.01	-0.92	

Civitas Resources

Survey Report

Company:	CRESTONE PEAK RESOURCES	Local Co-ordinate Reference:	Well CHICO 4-65 25-26 3BH
Project:	ARAPAHOE COUNTY	TVD Reference:	KBE 25' @ 5792.00usft
Site:	SEC 30-T4S-R64W	MD Reference:	KBE 25' @ 5792.00usft
Well:	CHICO 4-65 25-26 3BH	North Reference:	True
Wellbore:	OWB	Survey Calculation Method:	Minimum Curvature
Design:	FINAL SURVEY	Database:	EDM

Survey										
Measured Depth (usft)	Inclination (°)	Azimuth (°)	Vertical Depth (usft)	+N/-S (usft)	+E/-W (usft)	Vertical Section (usft)	Dogleg Rate (°/100ft)	Build Rate (°/100ft)	Turn Rate (°/100ft)	
8,701.00	89.93	270.39	7,878.64	-407.05	-1,308.39	1,322.26	3.84	-2.77	-2.67	
8,796.00	91.12	270.52	7,877.77	-406.29	-1,403.39	1,417.16	1.26	1.25	0.14	
8,891.00	90.06	270.17	7,876.79	-405.72	-1,498.38	1,512.07	1.18	-1.12	-0.37	
8,985.00	91.12	269.95	7,875.82	-405.62	-1,592.37	1,606.00	1.15	1.13	-0.23	
9,080.00	90.23	271.62	7,874.70	-404.32	-1,687.35	1,700.87	1.99	-0.94	1.76	
9,175.00	88.20	267.75	7,876.00	-404.84	-1,782.32	1,795.79	4.60	-2.14	-4.07	
9,270.00	89.22	268.98	7,878.14	-407.55	-1,877.25	1,890.76	1.68	1.07	1.29	
9,365.00	90.06	269.29	7,878.74	-408.99	-1,972.24	1,985.74	0.94	0.88	0.33	
9,459.00	88.91	269.95	7,879.59	-409.61	-2,066.23	2,079.69	1.41	-1.22	0.70	
9,554.00	89.13	269.29	7,881.21	-410.24	-2,161.21	2,174.64	0.73	0.23	-0.69	
9,649.00	87.85	270.61	7,883.71	-410.32	-2,256.18	2,269.54	1.94	-1.35	1.39	
9,744.00	86.66	270.48	7,888.26	-409.42	-2,351.06	2,364.33	1.26	-1.25	-0.14	
9,838.00	86.92	271.14	7,893.53	-408.10	-2,444.90	2,458.06	0.75	0.28	0.70	
9,933.00	87.63	269.91	7,898.04	-407.23	-2,539.79	2,552.86	1.49	0.75	-1.29	
10,028.00	89.13	271.01	7,900.73	-406.46	-2,634.74	2,647.72	1.96	1.58	1.16	
10,123.00	90.06	270.21	7,901.40	-405.45	-2,729.74	2,742.61	1.29	0.98	-0.84	
10,218.00	90.99	269.86	7,900.53	-405.39	-2,824.73	2,837.54	1.05	0.98	-0.37	
10,312.00	89.88	269.73	7,899.82	-405.73	-2,918.73	2,931.49	1.19	-1.18	-0.14	
10,407.00	89.17	268.14	7,900.60	-407.50	-3,013.70	3,026.47	1.83	-0.75	-1.67	
10,501.00	89.53	269.16	7,901.67	-409.71	-3,107.67	3,120.45	1.15	0.38	1.09	
10,595.00	88.86	267.22	7,902.99	-412.68	-3,201.61	3,214.44	2.18	-0.71	-2.06	
10,690.00	89.00	271.10	7,904.77	-414.07	-3,296.56	3,309.38	4.09	0.15	4.08	
10,784.00	89.17	271.89	7,906.27	-411.62	-3,390.52	3,403.19	0.86	0.18	0.84	
10,877.00	89.70	273.08	7,907.18	-407.59	-3,483.42	3,495.89	1.40	0.57	1.28	
10,973.00	88.69	272.68	7,908.53	-402.76	-3,579.29	3,591.52	1.13	-1.05	-0.42	
11,067.00	88.78	272.15	7,910.61	-398.80	-3,673.18	3,685.20	0.57	0.10	-0.56	
11,162.00	89.70	272.59	7,911.87	-394.88	-3,768.09	3,779.91	1.07	0.97	0.46	
11,257.00	90.63	271.45	7,911.59	-391.53	-3,863.03	3,874.66	1.55	0.98	-1.20	
11,350.00	89.44	271.18	7,911.54	-389.39	-3,956.01	3,967.50	1.31	-1.28	-0.29	
11,445.00	90.46	270.88	7,911.62	-387.69	-4,050.99	4,062.36	1.12	1.07	-0.32	
11,539.00	88.33	270.26	7,912.61	-386.75	-4,144.97	4,156.25	2.36	-2.27	-0.66	
11,634.00	87.89	269.82	7,915.75	-386.68	-4,239.92	4,251.13	0.65	-0.46	-0.46	
11,729.00	87.63	269.29	7,919.46	-387.42	-4,334.84	4,346.02	0.62	-0.27	-0.56	
11,824.00	88.38	270.04	7,922.77	-387.98	-4,429.78	4,440.92	1.12	0.79	0.79	
11,918.00	89.62	271.01	7,924.41	-387.11	-4,523.76	4,534.80	1.67	1.32	1.03	
12,013.00	90.50	271.18	7,924.31	-385.30	-4,618.74	4,629.66	0.94	0.93	0.18	
12,108.00	90.19	269.69	7,923.74	-384.58	-4,713.74	4,724.56	1.60	-0.33	-1.57	
12,203.00	90.54	269.47	7,923.13	-385.27	-4,808.73	4,819.52	0.44	0.37	-0.23	
12,297.00	90.72	269.47	7,922.10	-386.14	-4,902.72	4,913.48	0.19	0.19	0.00	
12,392.00	90.15	269.82	7,921.38	-386.73	-4,997.72	5,008.43	0.70	-0.60	0.37	
12,486.00	88.82	270.96	7,922.22	-386.09	-5,091.71	5,102.34	1.86	-1.41	1.21	
12,581.00	88.16	269.47	7,924.72	-385.74	-5,186.67	5,197.23	1.71	-0.69	-1.57	
12,676.00	87.89	270.74	7,928.00	-385.56	-5,281.61	5,292.10	1.37	-0.28	1.34	

Civitas Resources

Survey Report

Company:	CRESTONE PEAK RESOURCES	Local Co-ordinate Reference:	Well CHICO 4-65 25-26 3BH
Project:	ARAPAHOE COUNTY	TVD Reference:	KBE 25' @ 5792.00usft
Site:	SEC 30-T4S-R64W	MD Reference:	KBE 25' @ 5792.00usft
Well:	CHICO 4-65 25-26 3BH	North Reference:	True
Wellbore:	OWB	Survey Calculation Method:	Minimum Curvature
Design:	FINAL SURVEY	Database:	EDM

Survey										
Measured Depth (usft)	Inclination (°)	Azimuth (°)	Vertical Depth (usft)	+N/-S (usft)	+E/-W (usft)	Vertical Section (usft)	Dogleg Rate (°/100ft)	Build Rate (°/100ft)	Turn Rate (°/100ft)	
12,770.00	88.42	271.67	7,931.02	-383.59	-5,375.54	5,385.90	1.14	0.56	0.99	
12,865.00	88.95	272.73	7,933.20	-379.94	-5,470.45	5,480.61	1.25	0.56	1.12	
12,960.00	87.76	272.07	7,935.93	-375.96	-5,565.32	5,575.28	1.43	-1.25	-0.69	
13,054.00	88.78	272.42	7,938.77	-372.28	-5,659.20	5,668.97	1.15	1.09	0.37	
13,148.00	90.94	272.68	7,939.00	-368.10	-5,753.11	5,762.65	2.31	2.30	0.28	
13,243.00	91.30	271.23	7,937.14	-364.86	-5,848.03	5,857.40	1.57	0.38	-1.53	
13,338.00	91.91	271.80	7,934.48	-362.35	-5,942.96	5,952.17	0.88	0.64	0.60	
13,433.00	91.16	271.27	7,931.94	-359.81	-6,037.89	6,046.95	0.97	-0.79	-0.56	
13,527.00	90.10	271.18	7,930.90	-357.80	-6,131.86	6,140.79	1.13	-1.13	-0.10	
13,622.00	91.03	270.52	7,929.97	-356.39	-6,226.84	6,235.66	1.20	0.98	-0.69	
13,717.00	90.28	269.82	7,928.88	-356.11	-6,321.84	6,330.58	1.08	-0.79	-0.74	
13,811.00	88.29	269.99	7,930.05	-356.26	-6,415.82	6,424.51	2.12	-2.12	0.18	
13,906.00	87.67	269.29	7,933.40	-356.86	-6,510.76	6,519.41	0.98	-0.65	-0.74	
14,000.00	87.76	269.33	7,937.15	-357.99	-6,604.68	6,613.31	0.10	0.10	0.04	
14,095.00	88.38	269.86	7,940.35	-358.66	-6,699.62	6,708.21	0.86	0.65	0.56	
14,190.00	87.76	269.86	7,943.55	-358.89	-6,794.57	6,803.10	0.65	-0.65	0.00	
14,284.00	89.26	269.73	7,945.99	-359.23	-6,888.53	6,897.02	1.60	1.60	-0.14	
14,379.00	89.93	268.06	7,946.66	-361.06	-6,983.51	6,992.00	1.89	0.71	-1.76	
14,473.00	91.43	268.63	7,945.55	-363.78	-7,077.46	7,085.99	1.71	1.60	0.61	
14,568.00	91.07	269.77	7,943.48	-365.10	-7,172.43	7,180.94	1.26	-0.38	1.20	
14,662.00	88.86	270.35	7,943.53	-365.00	-7,266.42	7,274.87	2.43	-2.35	0.62	
14,758.00	89.75	268.80	7,944.70	-365.72	-7,362.41	7,370.82	1.86	0.93	-1.61	
14,852.00	89.97	268.14	7,944.93	-368.22	-7,456.37	7,464.81	0.74	0.23	-0.70	
14,947.00	89.79	267.61	7,945.13	-371.75	-7,551.31	7,559.81	0.59	-0.19	-0.56	
15,041.00	90.77	268.10	7,944.67	-375.27	-7,645.24	7,653.81	1.17	1.04	0.52	
15,136.00	91.47	266.25	7,942.81	-379.95	-7,740.10	7,748.78	2.08	0.74	-1.95	
15,231.00	90.85	269.02	7,940.89	-383.87	-7,834.99	7,843.75	2.99	-0.65	2.92	
15,326.00	89.79	268.50	7,940.36	-385.92	-7,929.96	7,938.73	1.24	-1.12	-0.55	
15,421.00	89.22	265.59	7,941.18	-390.82	-8,024.82	8,033.71	3.12	-0.60	-3.06	
15,516.00	89.22	264.62	7,942.47	-398.92	-8,119.47	8,128.58	1.02	0.00	-1.02	
15,610.00	88.38	267.04	7,944.44	-405.76	-8,213.19	8,222.49	2.72	-0.89	2.57	
15,705.00	88.91	270.04	7,946.69	-408.18	-8,308.12	8,317.45	3.21	0.56	3.16	
15,800.00	89.62	271.01	7,947.91	-407.31	-8,403.11	8,412.34	1.27	0.75	1.02	
15,894.00	90.15	270.48	7,948.09	-406.08	-8,497.10	8,506.23	0.80	0.56	-0.56	
15,988.00	90.54	271.27	7,947.53	-404.65	-8,591.09	8,600.10	0.94	0.41	0.84	
16,083.00	90.72	270.61	7,946.48	-403.09	-8,686.07	8,694.96	0.72	0.19	-0.69	
16,272.00	90.90	271.54	7,943.81	-399.54	-8,775.01	8,883.66	0.50	0.10	0.49	
16,368.00	88.69	271.58	7,944.15	-396.93	-8,970.97	8,979.46	2.30	-2.30	0.04	
16,462.00	88.38	270.96	7,946.56	-394.85	-9,064.92	9,073.27	0.74	-0.33	-0.66	
16,557.00	89.48	272.07	7,948.33	-392.34	-9,159.86	9,168.06	1.64	1.16	1.17	
16,650.00	87.41	269.42	7,950.86	-391.13	-9,252.81	9,260.90	3.61	-2.23	-2.85	
16,746.00	88.25	270.04	7,954.49	-391.58	-9,348.74	9,356.78	1.09	0.87	0.65	
16,936.00	89.70	271.93	7,957.89	-388.31	-9,538.66	9,546.47	1.25	0.76	0.99	
17,030.00	90.50	271.36	7,957.73	-385.61	-9,632.62	9,640.27	1.04	0.85	-0.61	

Civitas Resources

Survey Report

Company:	CRESTONE PEAK RESOURCES	Local Co-ordinate Reference:	Well CHICO 4-65 25-26 3BH
Project:	ARAPAHOE COUNTY	TVD Reference:	KBE 25' @ 5792.00usft
Site:	SEC 30-T4S-R64W	MD Reference:	KBE 25' @ 5792.00usft
Well:	CHICO 4-65 25-26 3BH	North Reference:	True
Wellbore:	OWB	Survey Calculation Method:	Minimum Curvature
Design:	FINAL SURVEY	Database:	EDM

Survey									
Measured Depth (usft)	Inclination (°)	Azimuth (°)	Vertical Depth (usft)	+N/-S (usft)	+E/-W (usft)	Vertical Section (usft)	Dogleg Rate (°/100ft)	Build Rate (°/100ft)	Turn Rate (°/100ft)
17,124.00	89.22	269.33	7,957.96	-385.05	-9,726.62	9,734.18	2.55	-1.36	-2.16
17,219.00	88.47	267.17	7,959.87	-387.95	-9,821.55	9,829.15	2.41	-0.79	-2.27
17,314.00	88.69	268.28	7,962.23	-391.72	-9,916.44	9,924.12	1.19	0.23	1.17
17,409.00	87.63	269.99	7,965.28	-393.15	-10,011.38	10,019.04	2.12	-1.12	1.80
17,504.00	87.89	270.35	7,968.99	-392.87	-10,106.30	10,113.90	0.47	0.27	0.38
17,599.00	88.42	270.48	7,972.05	-392.18	-10,201.25	10,208.76	0.57	0.56	0.14
17,693.00	89.62	271.89	7,973.66	-390.24	-10,295.21	10,302.59	1.97	1.28	1.50
17,788.00	90.94	271.58	7,973.19	-387.36	-10,390.16	10,397.38	1.43	1.39	-0.33
17,883.00	90.50	269.55	7,972.00	-386.43	-10,485.15	10,492.26	2.19	-0.46	-2.14
17,978.00	89.70	269.99	7,971.83	-386.81	-10,580.15	10,587.21	0.96	-0.84	0.46
LAST SURVEY - 17978' MD, 7972' TVD									
18,087.00	89.70	269.99	7,972.40	-386.83	-10,689.14	10,696.14	0.00	0.00	0.00
PTB - 18087' MD, 7972' TVD, 1768' FSL, 332' FWL SEC 26									

Design Targets									
Target Name	Dip Angle (°)	Dip Dir. (°)	TVD (usft)	+N/-S (usft)	+E/-W (usft)	Northing (usft)	Easting (usft)	Latitude	Longitude
- hit/miss target									
- Shape									
LP-CHICO 4-65 3BH (P'	0.00	0.00	7,875.00	-402.86	-822.54	1,670,966.56	3,252,018.37	39.672192°N	104.604697°W
- actual wellpath misses target center by 36.58usft at 8217.94usft MD (7872.42 TVD, -439.07 N, -827.02 E)									
- Point									
PBHL-CHICO 4-65 3BH	0.00	0.00	7,965.00	-354.37	-10,691.28	1,670,917.47	3,242,149.77	39.672319°N	104.639755°W
- actual wellpath misses target center by 33.36usft at 18087.00usft MD (7972.40 TVD, -386.83 N, -10689.14 E)									
- Point									

Design Annotations					
Measured Depth (usft)	Vertical Depth (usft)	Local Coordinates			
		+N/-S (usft)	+E/-W (usft)	Comment	
3,272.00	3,266.29	-123.12	-87.55	SURFACE CSG - 3272' MD, 3266' TVD	
7,300.00	7,283.25	-367.91	-234.48	KOP - 7300' MD, 7283' TVD	
8,213.40	7,871.97	-439.59	-822.54	~330' X-OVER PNT - 8213.40' MD, 7872' TVD, 1763' FSL, 330' FEL SEC 25	
8,296.00	7,878.40	-430.84	-904.42	HZ LANDING PNT - 8296' MD, 7878' TVD	
17,978.00	7,971.83	-386.81	-10,580.15	LAST SURVEY - 17978' MD, 7972' TVD	
18,087.00	7,972.40	-386.83	-10,689.14	PTB - 18087' MD, 7972' TVD, 1768' FSL, 332' FWL SEC 26	

Checked By: _____	Approved By: _____	Date: _____
-------------------	--------------------	-------------