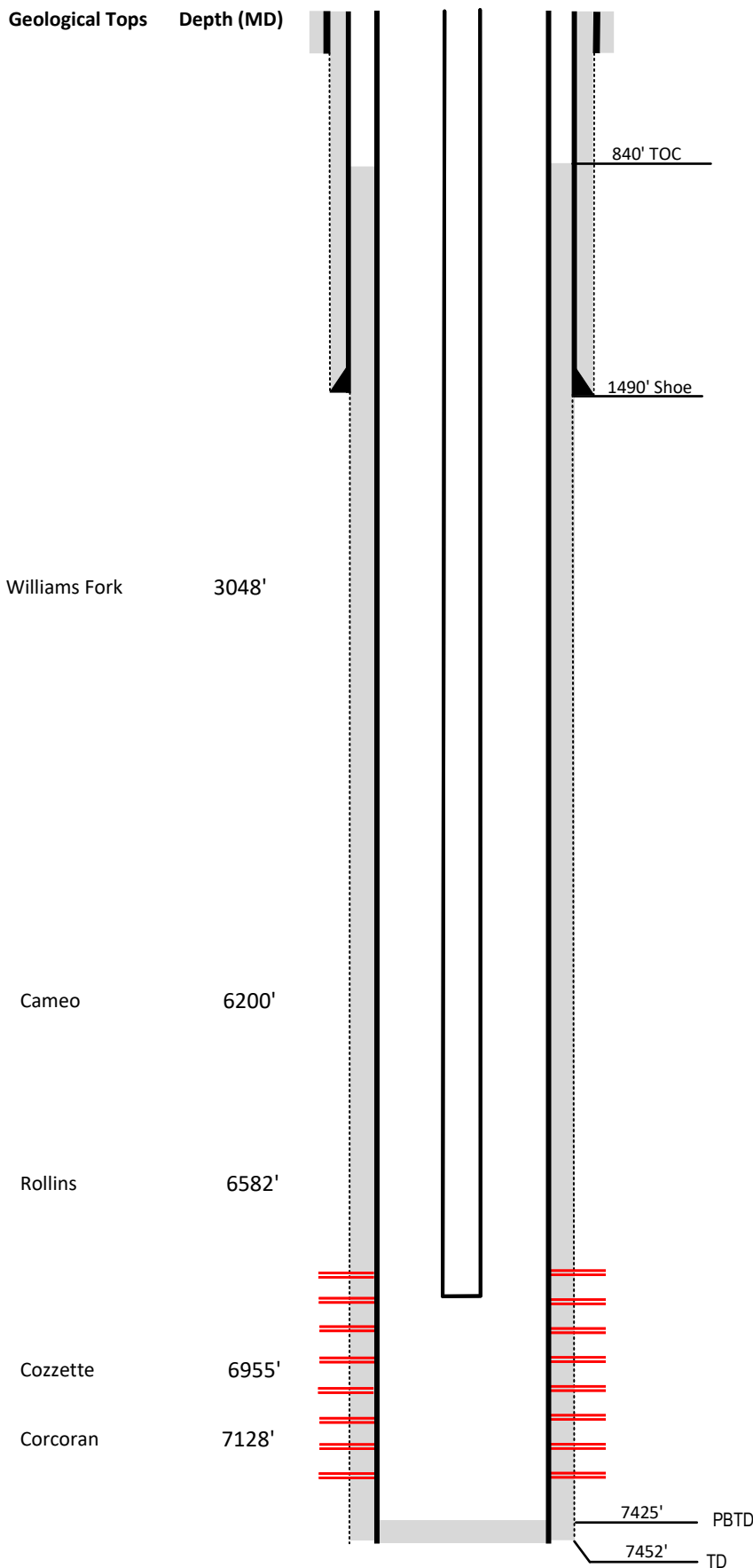


Laramie Energy

Current Wellbore Diagram

Not to scale

FEDERAL WELL: YES NO



Well Name	Esperanza Ranch #4-13
API	05-077-08977-00
Surface Location	SWNW Sec 9 T10S R94W
GPS Coordinates	39.208109, -107.894202
County, State	Mesa County, Co
Diagram Date	2/8/2024

Hole	26" @ 40'
Conductor	16" @ 40'
Cement	Surface

Surface Hole	12.25" @ 1515'
Casing	8 5/8" 32# J-55 @ 1515'
Cement	420 sks
TOC	Surface

Production Hole	7.875" @ 7451'
Casing	4 1/2" 11.6# I-80 @ 7451'
Cement	1280 sks
TOC	840' TOC

Tubing	2 3/8" J-55 EUE @ 6797'
---------------	-------------------------

Perforations	Top	Bottom
	5470'	7228'