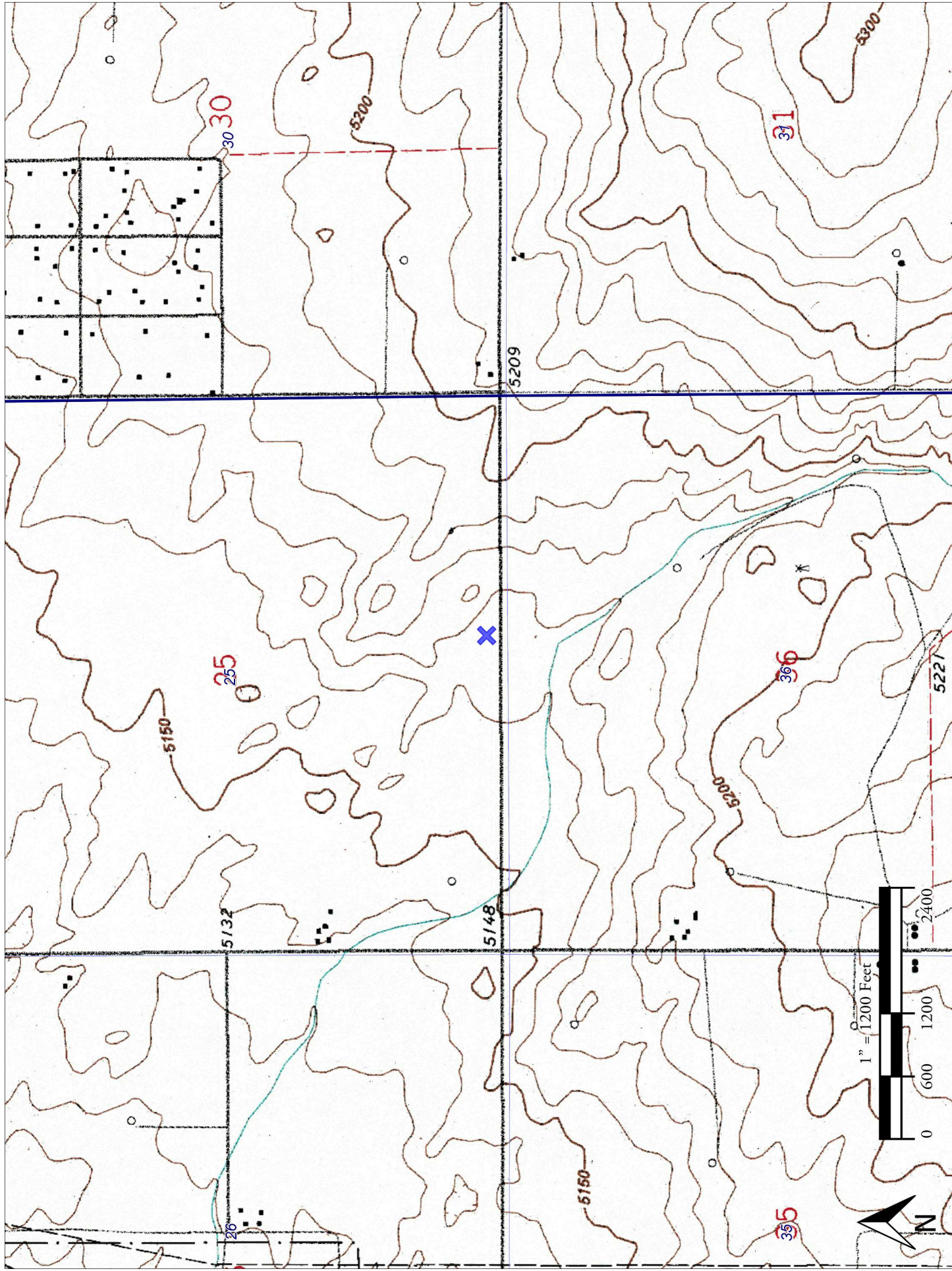


Topo Map



Alma 1S-66-2524

Legend

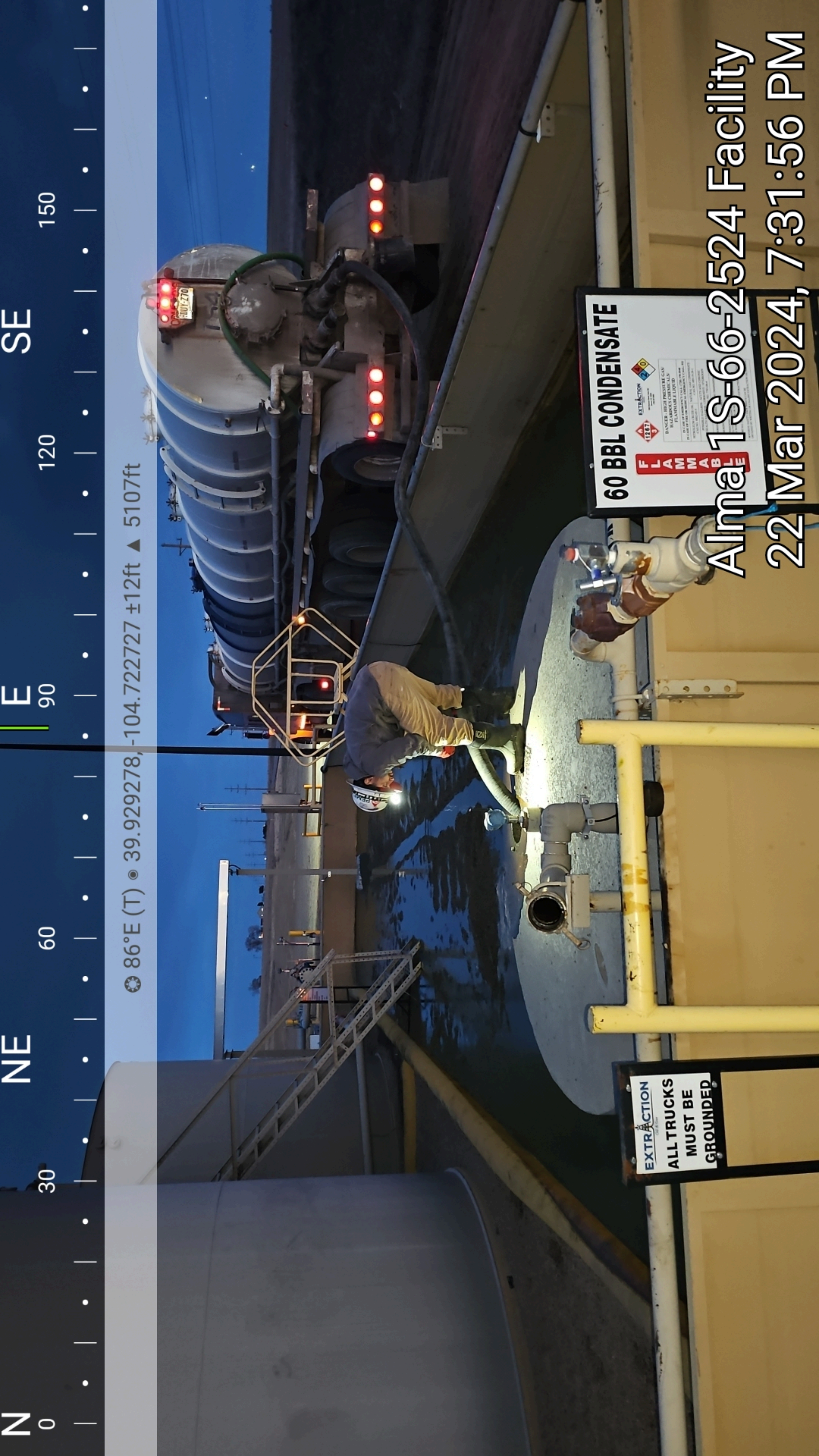
- Location of Spill
- Spill Area



300



Alma 1S-66-2524 Facility
22 Mar 2024, 7:07:43 PM



N

0

30

NE

60

E

90

SE

120

150

☀ 86°E (T) • 39.929278, -104.722727 ±12ft ▲ 5107ft

EXTRACTION
ALL TRUCKS
MUST BE
GROUNDED

60 BBL CONDENSATE

FLAMMABLE

EXTRACTION

12887

3

20

EXTRACTION

12887

3

20

EXTRACTION

12887

3

20

EXTRACTION

12887

3

20

EXTRACTION

12887

3

20

EXTRACTION

12887

3

20

EXTRACTION

12887

3

20

EXTRACTION

12887

3

20

EXTRACTION

12887

3

20

EXTRACTION

12887

3

20

EXTRACTION

12887

3

20

EXTRACTION

12887

3

20

EXTRACTION

12887

3

20

EXTRACTION

12887

3

20

EXTRACTION

12887

3

20

EXTRACTION

12887

3

20

EXTRACTION

12887

3

20

EXTRACTION

12887

3

20

EXTRACTION

12887

3

20

EXTRACTION

12887

3

20

EXTRACTION

12887

3

20

EXTRACTION

12887

3

20

EXTRACTION

12887

3

20

EXTRACTION

12887

3

20

EXTRACTION

12887

3

20

EXTRACTION

12887

3

20

EXTRACTION

12887

3

20

EXTRACTION

12887

3

20

EXTRACTION

12887

3

20

EXTRACTION

12887

3

20

EXTRACTION

12887

3

20

EXTRACTION

12887

3

20

EXTRACTION

12887

3

20

EXTRACTION

12887

3

20

EXTRACTION

12887

3

20

EXTRACTION

12887

3

20

EXTRACTION

12887

3

20

EXTRACTION

12887

3

20

EXTRACTION

12887

3

20

EXTRACTION

12887

3

20

EXTRACTION

12887

3

20

EXTRACTION

12887

3

20

EXTRACTION

12887

3

20

EXTRACTION

12887

3

20

EXTRACTION

12887

3

20

EXTRACTION

12887

3

20

EXTRACTION

12887

3

20

EXTRACTION

12887

3

20

EXTRACTION

12887

3

20

EXTRACTION

12887

3

20

EXTRACTION

12887

3

20

EXTRACTION

12887

3

20

EXTRACTION

12887

3

20

EXTRACTION

12887

3

20

EXTRACTION

12887

3

20

EXTRACTION

12887

3

20

EXTRACTION

12887

3

20

EXTRACTION

12887

3

20

EXTRACTION

12887

3

20

EXTRACTION

12887

3

20

EXTRACTION

12887

3

20

EXTRACTION

12887

3

20

EXTRACTION

12887

3

20

EXTRACTION

12887

3

20

EXTRACTION

12887

3

20

EXTRACTION

12887

3

20

EXTRACTION

12887

3

20

EXTRACTION

12887

3

20

EXTRACTION

12887

3

20

EXTRACTION

12887

3

20

EXTRACTION

12887

3

20

EXTRACTION

12887

3

20

EXTRACTION

12887

3

20

EXTRACTION

12887

3

20

EXTRACTION

12887

3

20

EXTRACTION

12887

3

20

EXTRACTION

12887

3

20

EXTRACTION

12887

3

20

EXTRACTION

12887

3

20

EXTRACTION

12887

3

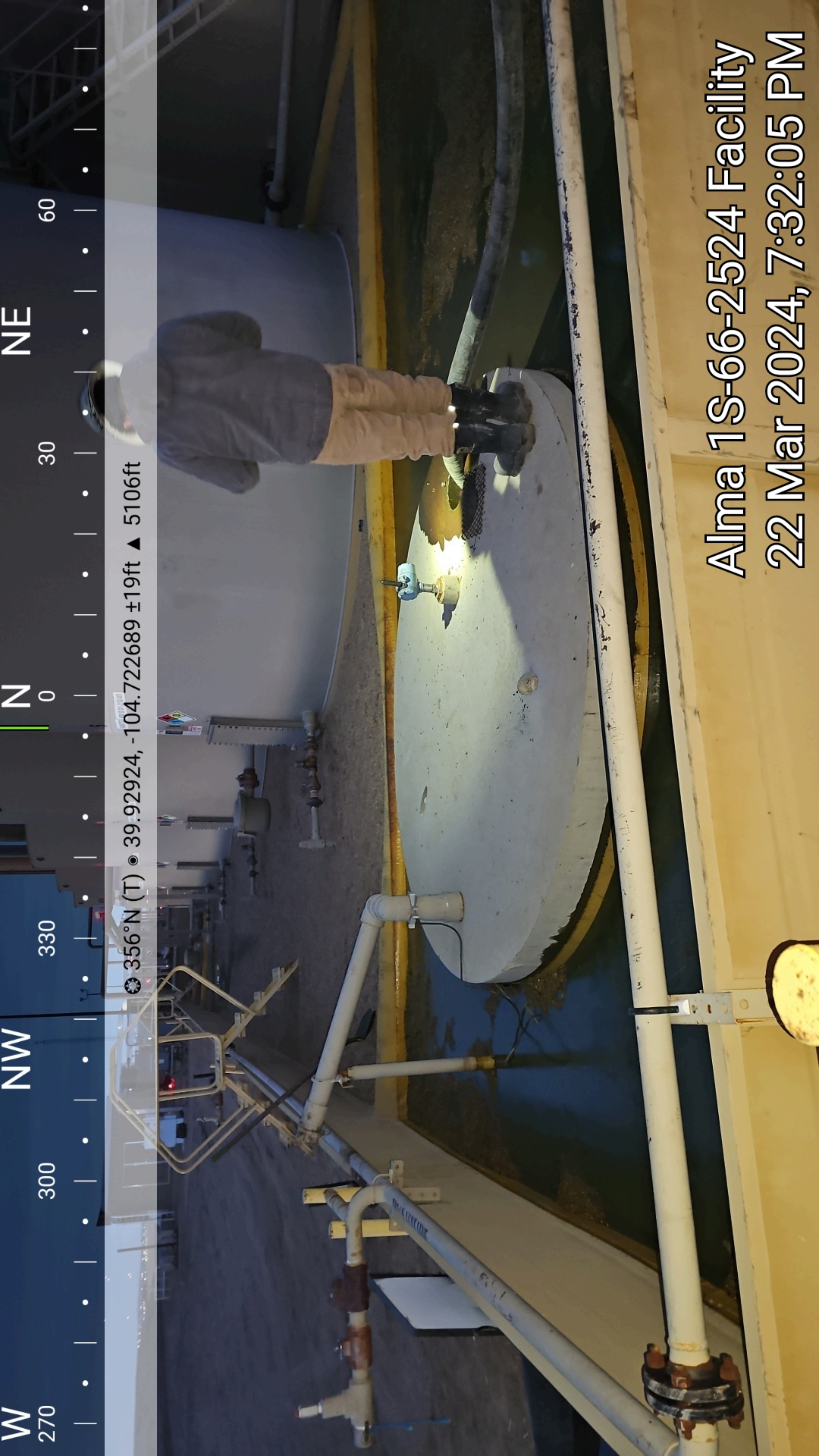
20

EXTRACTION

12887

3

20



W
270

300

NW

330

N
0

30

NE

60

☉ 356°N (T) ☉ 39.92924, -104.722689 ±19ft ▲ 5106ft

Alma 1S-66-2524 Facility
22 Mar 2024, 7:32:05 PM

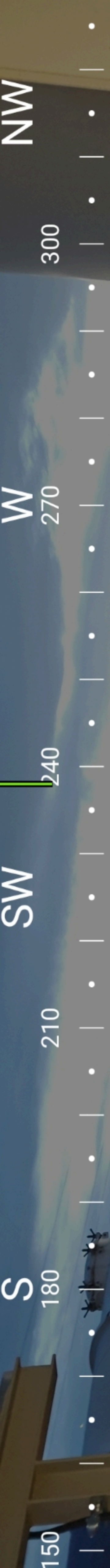
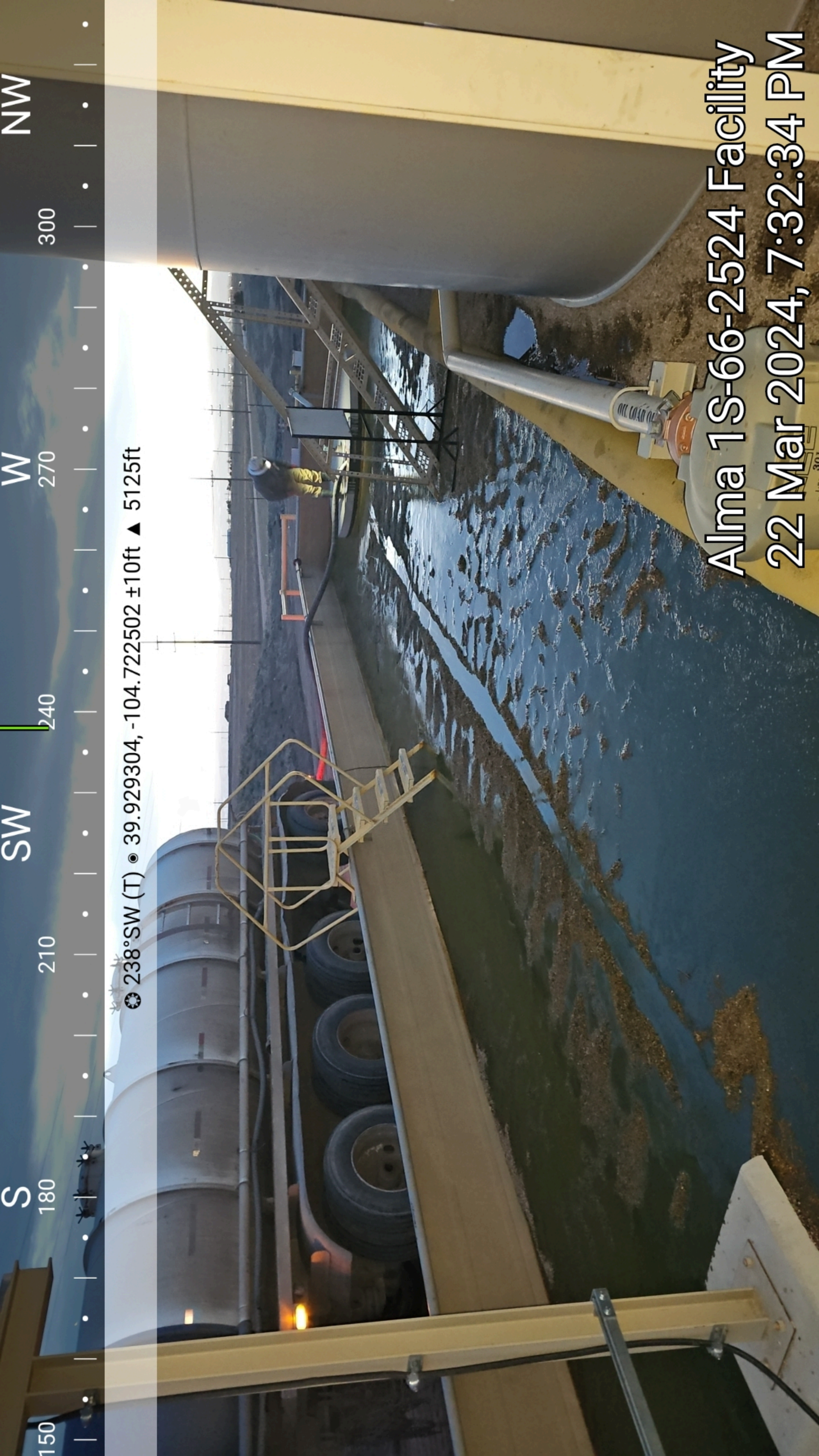


SW 210 240 270 W 300 330 NW 0

☀ 274°W (T) • 39.929299, -104.722492 ±12ft ▲ 5125ft

18AD0756 AIRS

Alma 1S-66-2524 Facility
22 Mar 2024, 7:32:25 PM



238°SW (T) • 39.929304, -104.722502 ±10ft ▲ 5125ft

Alma 1S-66-2524 Facility
22 Mar 2024, 7:32:34 PM

MS

210

240

W

270

300

NW

☀ 263°W (T) ☉ 39.929516, -104.722443 ±18ft ▲ 5106ft

EXTRACTION

Oil & Gas

Emergency Number: 720.370.5540

ALMA 1S-66-2524 PAD
BATTERY ID 449925
SWSW SEC 25 T1S R66W
ADAMS, CO

ALMA 1S-66-2524-19NH
API 05-001-10020

ALMA 1S-66-2524-20CDH
API 05-001-10027

DANGER
HIGH PRESSURE GAS
EXTREMELY HAZARDOUS CHEMICALS
FLAMMABLE LIQUID
CORROSIVE
POISONOUS - IRRITANT
HARMFUL TO AQUIFERS
HARMFUL TO THE ENVIRONMENT



**IN CASE OF FIRE
OR MEDICAL EMERGENCY
CALL 911**

128TH & PICCADILLY, EAST 6/10 MILE, N INTO
LAT 39.92977, LONG -104.72116

Alma 1S-66-2524 Facility
22 Mar 2024, 9:01:31 PM