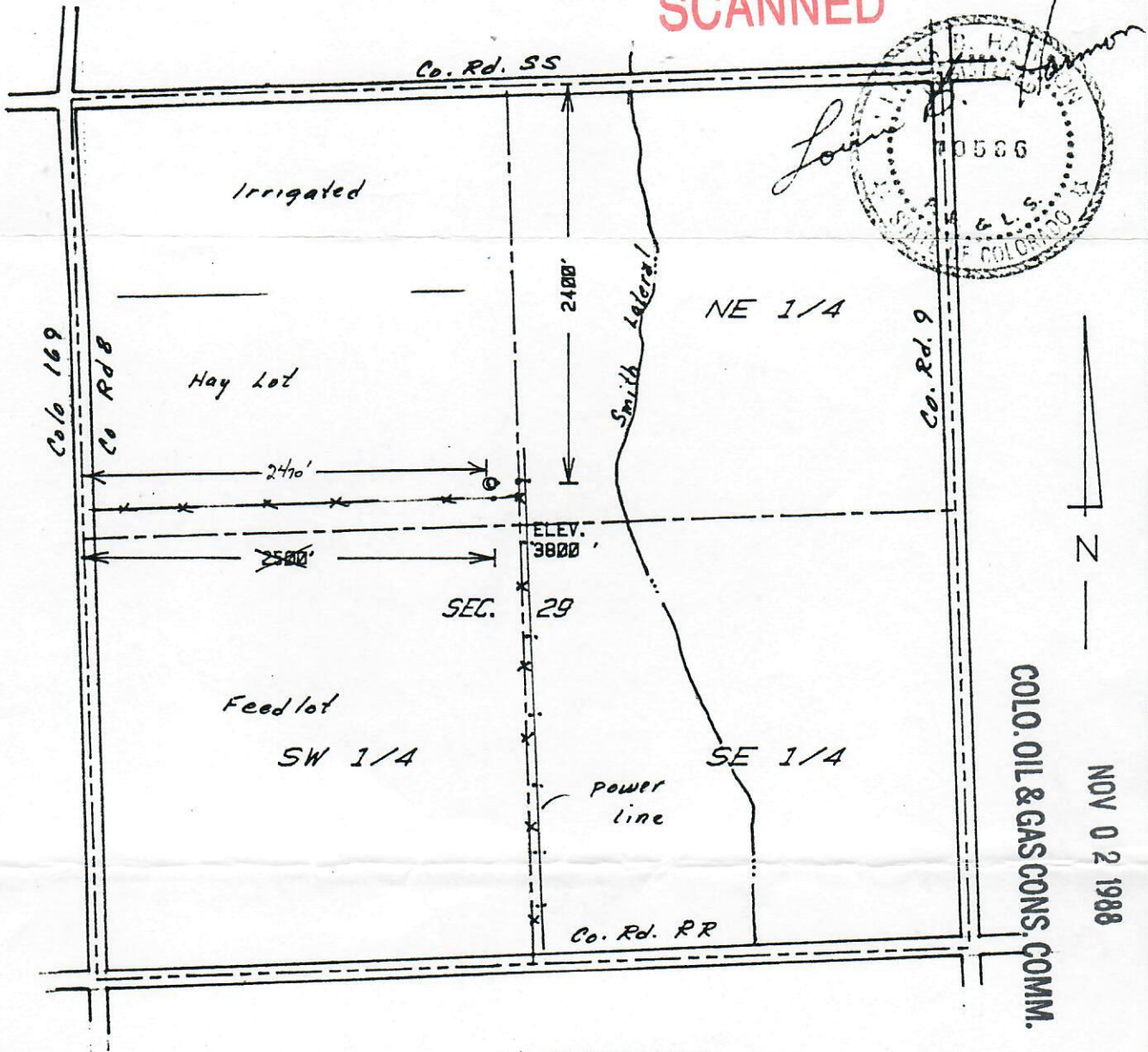




00627370

THE ACCOMPANYING PLAT IS AN ACCURATE REPRESENTATION SHOWING THE LOCATION OF A PROPOSED WELL. THIS LOCATION MAY BE DESCRIBED AS A POINT 2400 FEET SOUTH OF THE NORTH LINE, AND 2470 FEET EAST OF THE WEST LINE OF SECTION 29, TOWNSHIP 21 S, RANGE 46 W OF THE 6th P.M., PROWERS COUNTY, COLORADO. THE SURFACE ELEVATION AT THIS POINT IS 3800 FEET m.s.l.

SCANNED



SCALE - 1"=1000'

- SURVEYED POINT
- REFERENCE STAKE (90° S, 145° E)
- NW 1/4 SEC. 29, T 21 S, R 46 W

HARMON
ENGINEERING
SERVICES

LAMAR LIVESTOCK #1-29 X

MURFIN DRILLING CO.

PROWERS CO., COLORADO

9 SEPT. 1988

2212-185

RECEIVED

NOV 02 1988

COLO. OIL & GAS CONS. COMM.