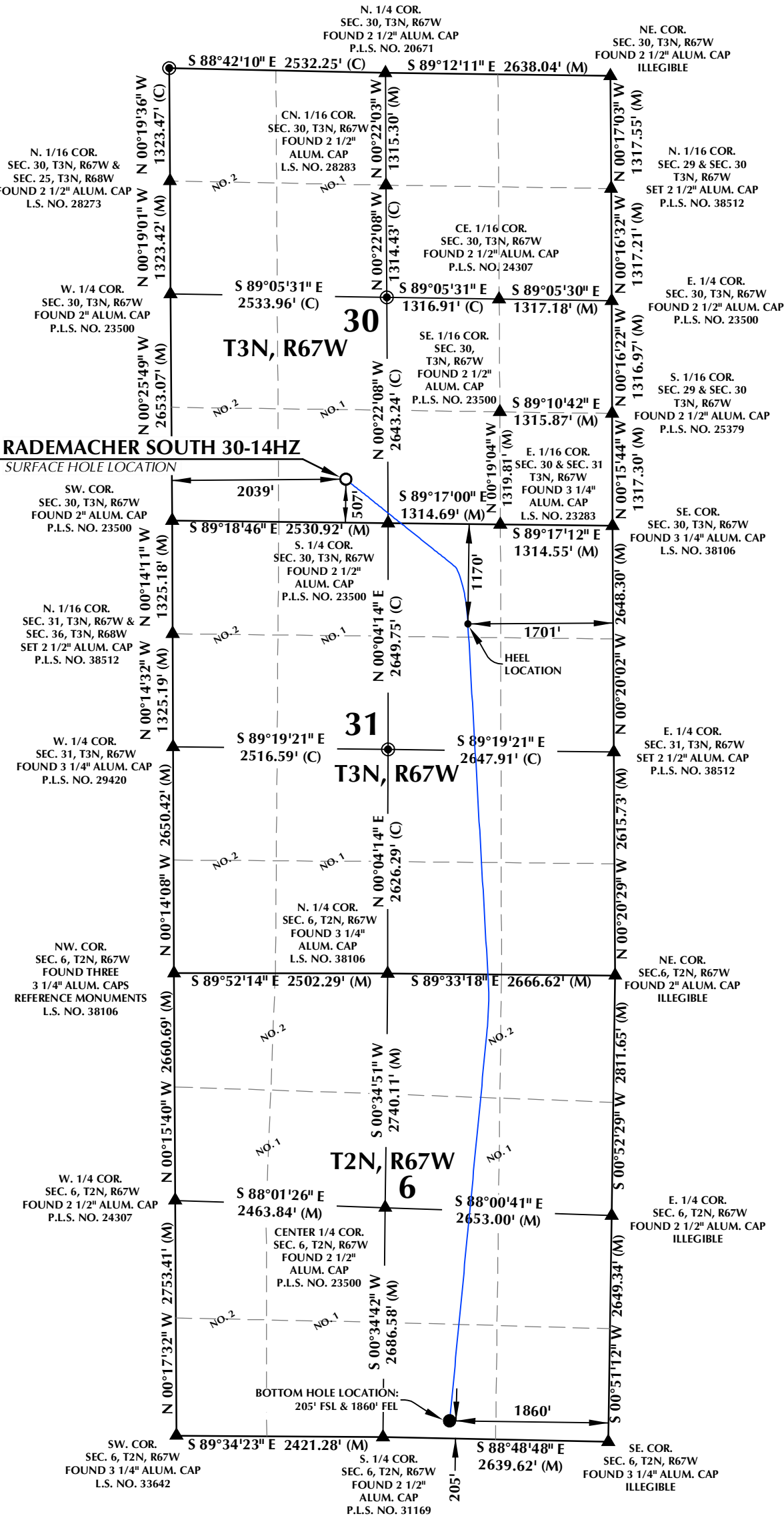


SURFACE HOLE LOCATION: NAD 83
GROUND ELEVATION= 4821.3'
LATITUDE= 40.191311°
LONGITUDE= -104.934469°
LATITUDE= 40°11'28.718"
LONGITUDE= -104°56'04.089"
HEEL LOCATION: NAD 83
LATITUDE= 40.186633°
LONGITUDE= -104.929389°
LATITUDE= 40°11'11.878"
LONGITUDE= -104°55'45.799"
BOTTOM HOLE LOCATION: NAD 83
LATITUDE= 40.161021°
LONGITUDE= -104.930368°
LATITUDE= 40°09'39.674"
LONGITUDE= -104°55'49.326"



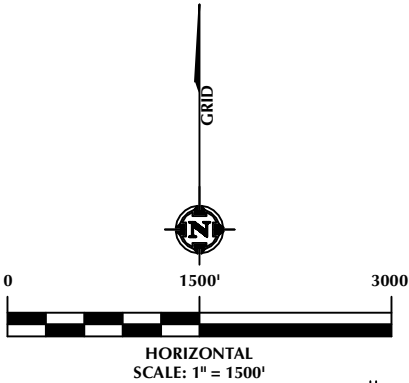
CERTIFICATE OF SURVEYOR:

THIS IS TO CERTIFY THAT THE ABOVE MAP WAS PREPARED FROM FIELD NOTES OF ACTUAL SURVEYS MADE BY ME OR UNDER MY SUPERVISION AND THAT THE SAME ARE TRUE AND CORRECT TO THE BEST OF MY KNOWLEDGE AND BELIEF. THIS CERTIFICATE DOES NOT REPRESENT A LAND SURVEY PLAT OR IMPROVEMENT SURVEY PLAT AS DEFINED BY C.R.S. 38-51-102 AND CANNOT BE RELIED UPON TO DETERMINE OWNERSHIP.

Randall K. French
5/26/23
38512
PROFESSIONAL LAND SURVEYOR

RANDALL K. FRENCH
PROFESSIONAL LAND SURVEYOR
COLORADO REGISTRATION NUMBER 38512

NOTICE:
ACCORDING TO COLORADO STATE LAW YOU MUST COMMENCE ANY LITIGATION BASED UPON ANY DEFECT IN THIS SURVEY WITHIN THREE YEARS AFTER YOU FIRST DISCOVER SUCH DEFECT. IN NO EVENT MAY ANY ACTION BASED UPON ANY DEFECT IN THIS SURVEY BE COMMENCED MORE THAN TEN YEARS FROM THE DATE ON THE CERTIFICATION SHOWN HEREON.



NOTES:

- ▲ INDICATES SECTION CORNER.
- INDICATES CALCULATED CORNER.
- ELEVATION BASED ON NAVD88 (GEOID18).
- BASIS OF BEARINGS DERIVED FROM COLORADO COORDINATE SYSTEM OF 1983, NORTH ZONE.
- ALL MEASURED DISTANCES ARE GRID.
COMBINED SCALE FACTOR: .99983054 CALCULATED FROM THE S. 1/4 CORNER OF SECTION 30, T3N, R67W.
OPERATOR: ROB WILSON / PDOP = 1.4
- WELL FOOTAGES ARE MEASURED AT RIGHT ANGLES TO THE SECTION LINES.

WELL PAD - RADEMACHER 14-30HZ

RADEMACHER SOUTH 30-14HZ
WELL LOCATION CERTIFICATE
507' FSL & 2039' FWL LOT 1 (SESW) (SURFACE HOLE LOCATION)
LOCATED IN SECTION 30
1170' FNL & 1701' FEL (NW/NE) (HEEL LOCATION)
LOCATED IN SECTION 31
T3N, R67W, 6TH P.M.
205' FSL & 1860' FEL (SWSE) (BOTTOM HOLE LOCATION)
LOCATED IN SECTION 6
T2N, R67W, 6TH P.M.
WELD COUNTY, COLORADO

Kerr-McGee Oil &
Gas Onshore LP
1099 18th Street
Denver, Colorado 80202



CONSULTING, LLC

SHERIDAN OFFICE
1095 Saberton Avenue
Sheridan, Wyoming 82801
Phone 307-674-0609

LOVELAND OFFICE
6706 North Franklin Avenue
Loveland, Colorado 80538
Phone 970-776-4331

DRAFTED BY:	SJM	CHECKED BY:	RKF
DATE DRAFTED:	5/26/23	DATE SURVEYED:	4/11/23
REVISED:		FILE NAME:	21-66