



Bayswater Exploration & Production LLC LONG STRING POST JOB REPORT

**Ruby West #7 05-123-51752
S:7 T:7N R:65W Weld CO**

CallSheet #: 83572
Proposal #: 63494



LONG STRING Post Job Report

Attention: Trevor Smith | (720) 335-9045 | trevor.smith@iptenergyservices.com
Bayswater Exploration & Production LLC
730 17TH STREET | DENVER, CO 80202

Dear Trevor Smith,

Thank you for the opportunity to provide cementing services on this well. American Cementing strives to achieve complete customer satisfaction. If you have any questions regarding the services or data provided, please contact American Cementing at any time.

Sincerely,

Jason Creel

Field Engineer Lead | (307) 256-0306 | jason.creel@americacementing.com

Field Office 1716 E Allison Rd, Cheyenne, WY 82007
Phone: (307) 414-0049

Job Details & Summary

Geometry

Type	Function	OD (in)	ID (in)	Weight (lb/ft)	Top (ft)	Bottom (ft)	Excess (%)
Casing	Outer	9.625	8.921	36	0	1575	0
Open Hole	Outer		8.5		1575	17820	5
Casing	Inner	5.5	4.778	20	0	17820	0

Equipment / People

Unit Type	Unit
Field Storage Silo	FSS-440
Field Storage Silo	FSS-461
Field Storage Silo	FSS-448
AS Cement Trailer Float	CTF-021
AS Cement Trailer Float	CTF-018
Cement Trailer Float	CTF-408
Cement Trailer Float	CTF-232
Cement Trailer Float	CTF-003
Cement Trailer Float	CTF-566
AS Cement Trailer Float	CTF-308
AS Cement Trailer Float	CTF-9566
Cement Pump Float	CPF-184
Cement Utility Float	CUF-162

Timing

Event	Date/Time
Call Out	9/24/2022 03:00
Depart Facility	9/24/2022 06:00
On Location	9/24/2022 07:30
Rig Up Iron	9/24/2022 08:30
Job Started	9/24/2022 10:00
Job Completed	9/24/2022 13:33
Rig Down Iron	9/24/2022 14:00
Depart Location	9/24/2022 16:00

General Job Information

Metrics	Value
Well Fluid Density	9.7 lb/gal
Well Fluid Type	OBM
Rig Circulation Vol	1989 bbls
Rig Circulation Time	3 hours
Calculated Displacement	396 bbls
Actual Displacement	396 bbls
Total Spacer to Surface	80 bbls
Total CMT to Surface	82 bbls

Casing Equipment

Type	Description	Qty
CENTRALIZER,5-1/2"NON-WELD	Ridged	211

Job Details

Metrics	Value
Flare Prior to Job	No
Flare Prior to Job	0 units
Flare During Job	No
Flare During Job	0 units
Flare at End of Job	No
Flare at End of Job	0 units
Well Full Prior to Job	Yes
Well Fluid Density Into Well	9.7 lb/gal
Well Fluid Density Out of Well	9.7 lb/gal

Job Details (cont.)

Metrics	Value
BHCT	225 °F
BHST	225 °F

Water Analysis

Metrics	Value	Recommended
Water Source	Upright Rig Tank	
Temperature	60 °F	50-80 °F
pH Level	7	5.5-8.5
Chlorides	0 mg/L	0-3000 mg/L
Total Alkalinity	140	0-1000
Total Hardness	250 mg/L	0-500 mg/L
Carbonates	40 mg/L	0-100 mg/L
Sulfates	<200 mg/L	0-1500 mg/L
Potassium	0 mg/L	0-3000 mg/L
Iron	0 mg/L	0-300 mg/L

Circulation

Lost Circulation Experienced
No

Job Execution Information

Fluid	Product	Function	Density (lb/gal)	Yield (ft ³ /sk)	Water Rq. (gal/sk)	Water Rq. (gal/bbl)	Volume (sks)	Volume (bbl)	Designed Top (ft)
1	EZ Spacer II	Spacer	12.00					40.00	0
2	EZ Spacer II	Spacer	11.50					20.00	0
3	EZ Spacer II	Spacer	11.00					20.00	0
4	Lead	Lead	13.50	1.55	7.81		1190.00	328.62	0
5	Tail	Tail	13.50	1.50	7.57		1680.00	449.91	7431
6	Retarded Water + Chems	Displacement	8.37			41.43		10.00	17354
7	Water + Chems	DisplacementFinal	8.37			41.53		385.00	0

Job Fluid Details

Fluid	Type	Fluid	Product	Function	Conc.	Uom
1	Spacer	EZ Spacer II	WEIGHTING ADDITIVE, W-11	Heavyweight	242.31	lb/bbl
1	Spacer	EZ Spacer II	GW-86	Viscosifier	1.20	lb/bbl
1	Spacer	EZ Spacer II	R-31	Retarder	0.50	lb/bbl
1	Spacer	EZ Spacer II	R-7C	Retarder	2.00	lb/bbl
1	Spacer	EZ Spacer II	Surfactant, S-801c	Surfactant	1.00	gal/bbl
2	Spacer	EZ Spacer II	WEIGHTING ADDITIVE, W-11	Heavyweight	242.31	lb/bbl
2	Spacer	EZ Spacer II	GW-86	Viscosifier	1.20	lb/bbl
2	Spacer	EZ Spacer II	R-31	Retarder	0.50	lb/bbl
2	Spacer	EZ Spacer II	R-7C	Retarder	2.00	lb/bbl
2	Spacer	EZ Spacer II	Surfactant, S-801c	Surfactant	1.00	gal/bbl
3	Spacer	EZ Spacer II	WEIGHTING ADDITIVE, W-11	Heavyweight	242.31	lb/bbl
3	Spacer	EZ Spacer II	GW-86	Viscosifier	1.20	lb/bbl
3	Spacer	EZ Spacer II	R-31	Retarder	0.50	lb/bbl
3	Spacer	EZ Spacer II	R-7C	Retarder	2.00	lb/bbl
3	Spacer	EZ Spacer II	Surfactant, S-801c	Surfactant	1.00	gal/bbl
4	Lead	Lead	CLASS G	Cement	50.00	%
4	Lead	Lead	FLY ASH (ROCKIES)	Extender	50.00	%
4	Lead	Lead	BENTONITE	Viscosifier	4.00	%BWOB
4	Lead	Lead	EC-2	BondEnhancer	3.00	%BWOB
4	Lead	Lead	FL-24	FluidLoss	0.20	%BWOB



Fluid	Type	Fluid	Product	Function	Conc.	Uom
4	Lead	Lead	FL-66	FluidLoss	0.30	%BWOB
4	Lead	Lead	FP-24	Defoamer	0.30	%BWOB
4	Lead	Lead	GW-86	Viscosifier	0.10	%BWOB
4	Lead	Lead	SR-20	Retarder	0.05	%BWOB
4	Lead	Lead	STATIC FREE	Other	0.01	lb/sk
5	Tail	Tail	CLASS G	Cement	50.00	%
5	Tail	Tail	FLY ASH (ROCKIES)	Extender	50.00	%
5	Tail	Tail	BENTONITE	Viscosifier	4.00	%BWOB
5	Tail	Tail	FL-24	FluidLoss	0.20	%BWOB
5	Tail	Tail	FP-24	Defoamer	0.30	%BWOB
5	Tail	Tail	GW-86	Viscosifier	0.10	%BWOB
5	Tail	Tail	SR-20	Retarder	0.11	%BWOB
5	Tail	Tail	STATIC FREE	Other	0.01	lb/sk
6	Displacement	Retarded Water + Chems	BIOCIDE,BIOC11139W	Biocide	0.01	gal/bbl
6	Displacement	Retarded Water + Chems	CI-27	Other	0.21	gal/bbl
6	Displacement	Retarded Water + Chems	OXYGEN SCAVENGER, OS-30	Other	0.17	gal/bbl
6	Displacement	Retarded Water + Chems	ResCare CS-2	ClayProtection	0.08	gal/bbl
6	Displacement	Retarded Water + Chems	SR-61L	Retarder	0.10	gal/bbl
7	DisplacementFinal	Water + Chems	BIOCIDE,BIOC11139W	Biocide	0.01	gal/bbl
7	DisplacementFinal	Water + Chems	CI-27	Other	0.21	gal/bbl
7	DisplacementFinal	Water + Chems	OXYGEN SCAVENGER, OS-30	Other	0.17	gal/bbl
7	DisplacementFinal	Water + Chems	ResCare CS-2	ClayProtection	0.08	gal/bbl

Job Logs

Line	Event	Date (MM/DD/YY)	Time (HH:MM)	Density (lb/gal)	Pump Rate (bpm)	Pump Volume (bbls)	Pipe Pressure (psi)	Comment
1	Call Out	9/24/2022	03:00					ACC gets called out. Requested t/l 09:00
2	Depart Facility	9/24/2022	06:00					ACC departs facility
3	Arrived To Location	9/24/2022	07:30					ACC arrives to location, rig is currently running casing
4	Rig Up	9/24/2022	08:30					ACC spots in units and rigs up equipment
5	Safety Meeting	9/24/2022	09:20					ACC had pre-job safety meeting with rig hands and OSR. Went over job procedure
6	Pressure Test	9/24/2022	10:00				4950	Pressure test pump/lines to 4950 psi
7	Pump EZ-II Spacer	9/24/2022	10:07	12	6		900	Start mixing and pumping EZ-II Spacer @ 12 ppg @ 6 bpm w/ 900 psi
8	Pump EZ-II Spacer	9/24/2022	10:14	11.5	6	40	700	At 40 away into EZ-II Spacer, dropped to 11.5 ppg @ 6 bpm w/ 700 psi
9	Pump EZ-II Spacer	9/24/2022	10:18	11	6	60	500	At 60 away into EZ-II Spacer, dropped to 11 ppg @ 6 bpm w/ 500 psi
10	Pump Lead CMT	9/24/2022	10:22	13.5	8	280	1000	Pumped 280 bbls of Lead CMT @ 13.5 ppg @ 8 bpm w/ 1000 psi
11	Slow Rate	9/24/2022	11:02	13.5	6.5	48.51	600	Pumped 48.51 bbls of Lead CMT @ 13.5 ppg @ 6.5 bpm w/ 600 psi (9.4 g/sk 1.79 yld 955 sks) Slowed rate due to air hose breaking
12	Pump Tail CMT	9/24/2022	11:13	13.5	8	400	900	Pumped 400 bbls of Tail CMT @ 13.5 @ 8 bpm w/ 900 psi (7.6 g/sk 1.50 yld 1590 sks)
13	Slow Rate	9/24/2022	12:00	13.5	5.5	48.81	500	Pumped 48.81 bbls of Lead CMT @ 13.5 ppg @ 5.5 bpm w/ 500 psi (9.4 g/sk 1.79 yld 955 sks) Slowed rate due to delivery issue
14	Shut Down	9/24/2022	12:28					Shut down pumping CMT
15	Wash Pump/Lines	9/24/2022	12:29					Washed pump/lines to open top
16	Drop Bottom Plug	9/24/2022	12:30					Dropped bottom plug
17	Pump 5 BBLs SR-61L	9/24/2022	12:35	8.33	5	5	100	Pumped 5 bbls w/ SR-61L for wet shoe @ 2 bpm w/ 100 psi
18	Drop Top Plug	9/24/2022	12:36					Shut down and dropped top plug
19	Pump Disp	9/24/2022	12:38	8.33	10		700	Came back online with disp @ 10 bpm w/ 700 psi
20	Shut Down	9/24/2022	13:03	8.33	10	234	3500	Shut down at 234 bbls away into disp for rig to switch over to open top and got spacer to surface @ 10 bpm w/ 3500 psi
21	Back Online	9/24/2022	13:05	8.33	8		3200	Came back online with disp @ 8 bpm w/ 3200 psi
22	CMT To Surface	9/24/2022	13:17	8.33	8	314	3200	At 314 bbls away into disp got CMT back to surface @ 8 bpm w/ 3200 psi
23	Slow Rate	9/24/2022	13:25	8.33	3	375	2600	Slow down rate @ 375 bbls away into disp to 3 bpm w/ 2600 psi
24	Burst Bottom Plug	9/24/2022	13:28	8.33	3	391	2600	At 391 bbls away into disp, burst bottom plug @ 3 bpm w/ 3650 psi
25	Burst Top Plug	9/24/2022	13:29	8.33	3	396	2600	At 396 bbls away into disp, burst top plug @ 3 bpm w/ 4100 psi
26	Shut Down	9/24/2022	13:29					Shut down pumping disp
27	Check Floats	9/24/2022	13:33					Checked floats, got 3 bbls back
28	Rig Down	9/24/2022	14:00					ACC rigged down equipment
29	Depart Location	9/24/2022	16:00					ACC departs location



Line	Event	Date (MM/DD/YY)	Time (HH:MM)	Density (lb/gal)	Pump Rate (bpm)	Pump Volume (bbls)	Pipe Pressure (psi)	Comment
30	Other	9/24/2022	16:01			82		Total CMT back to surface, 82 bbls

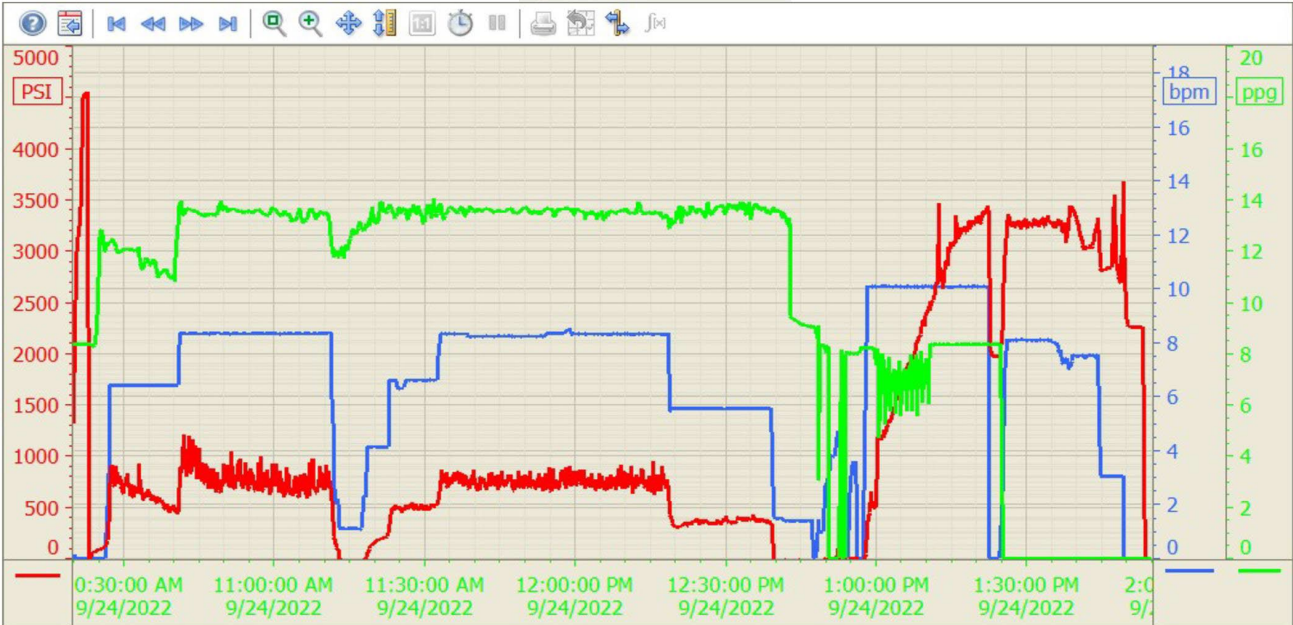
Pump Diagrams

Summary Trend

Bayswater Exp. 7



Lease: Ruby West



9/24/2022 2:44:24 PM