



# **Bayswater Exploration & Production LLC LONG STRING POST JOB REPORT**

**Ruby West #5 05-123-51753  
S:7 T:7N R:65W Weld CO**

CallSheet #: 83910  
Proposal #: 63980



**LONG STRING Post Job Report**

**Attention:** Trevor Smith | (720) 335-9045 | [trevor.smith@iptenergyservices.com](mailto:trevor.smith@iptenergyservices.com)

Bayswater Exploration & Production LLC

730 17TH STREET | DENVER, CO 80202

---

Dear Trevor Smith,

Thank you for the opportunity to provide cementing services on this well. American Cementing strives to achieve complete customer satisfaction. If you have any questions regarding the services or data provided, please contact American Cementing at any time.

Sincerely,

**Aimee Sankovich**

Field Engineer I | (307) 689-0323 | [aimee.sankovich@americacementing.com](mailto:aimee.sankovich@americacementing.com)

**Field Office**      1716 E Allison Rd, Cheyenne, WY 82007  
Phone: (307) 414-0049

## Job Details & Summary

### Geometry

Type	Function	OD (in)	ID (in)	Weight (lb/ft)	Top (ft)	Bottom (ft)	Excess (%)
Casing	Outer	9.625	8.921	36	0	1549	0
Open Hole	Outer		8.5		7282	17936	5
Casing	Inner	5.5	4.778	20	0	17917	0

### Equipment / People

Unit Type	Unit
Field Storage Silo	FSS-448
Field Storage Silo	FSS-461
Field Storage Silo	FSS-440
AS Cement Trailer Float	CTF-9566
AS Cement Trailer Float	CTF-9594
AS Cement Trailer Float	CTF-018
AS Cement Trailer Float	CTF-9054
Cement Trailer Float	CTF-003
Cement Trailer Float	CTF-566
AS Cement Trailer Float	CTF-031
AS Cement Trailer Float	CTF-308
Cement Pump Float	CPF-182
Cement Utility Float	CUF-158

### Timing

Event	Date/Time
Call Out	10/11/2022 17:00
Depart Facility	10/11/2022 19:30
On Location	10/11/2022 20:30
Rig Up Iron	10/11/2022 20:50
Job Started	10/12/2022 03:11
Job Completed	10/12/2022 06:54
Rig Down Iron	10/12/2022 07:05
Depart Location	10/12/2022 08:30

### General Job Information

Metrics	Value
Well Fluid Density	9.99 lb/gal
Well Fluid Type	OBM
Rig Circulation Vol	2300 bbls
Rig Circulation Time	3 hours
Calculated Displacement	397 bbls
Actual Displacement	397 bbls
Total Spacer to Surface	80 bbls
Total CMT to Surface	37 bbls
Well Topped Out	0
Top Out Volume	0 bbls

### Casing Equipment

Type	Description	Qty
CENTRALIZER,5-1/2"NON-WELD	Matrix	211

### Job Details

Metrics	Value
Flare Prior to Job	No
Flare Prior to Job	1455 units
Flare During Job	No
Flare During Job	0 units
Flare at End of Job	No
Flare at End of Job	0 units
Well Full Prior to Job	Yes
Well Fluid Density Into Well	9.99 lb/gal
Well Fluid Density Out of Well	9.99 lb/gal

### Job Details (cont.)

Metrics	Value
BHCT	225 °F
BHST	225 °F

### Water Analysis

Metrics	Value	Recommended
Water Source	Upright Rig Tank	
Temperature	55 °F	50-80 °F
pH Level	8	5.5-8.5
Chlorides	0 mg/L	0-3000 mg/L
Total Alkalinity	180	0-1000
Total Hardness	125 mg/L	0-500 mg/L
Carbonates	140 mg/L	0-100 mg/L
Sulfates	<200 mg/L	0-1500 mg/L
Potassium	450 mg/L	0-3000 mg/L
Iron	0.15 mg/L	0-300 mg/L

### Circulation

Lost Circulation Experienced
No

### Job Execution Information

Fluid	Product	Function	Density (lb/gal)	Yield (ft <sup>3</sup> /sk)	Water Rq. (gal/sk)	Water Rq. (gal/bbl)	Volume (sks)	Volume (bbl)	Designed Top (ft)
1	EZ Spacer II	Spacer	12.00			29.92		40.00	0
2	EZ Spacer II	Spacer	12.00			29.92		20.00	0
3	EZ Spacer II	Spacer	12.00			29.92		20.00	0
4	Lead	Lead	13.20	1.79	9.24		1035.00	330.06	0
5	Tail	Tail	13.50	1.50	7.57		1670.00	447.26	6953
6	Retarded Water + Chems	Displacement	8.37			41.43		10.00	17462
7	Water + Chems	DisplacementFinal	8.37			41.53		388.00	0

### Job Fluid Details

Fluid	Type	Fluid	Product	Function	Conc.	Uom
1	Spacer	EZ Spacer II	WEIGHTING ADDITIVE, W-11	Heavyweight	242.31	lb/bbl
1	Spacer	EZ Spacer II	GW-86	Viscosifier	1.20	lb/bbl
1	Spacer	EZ Spacer II	R-31	Retarder	0.50	lb/bbl
1	Spacer	EZ Spacer II	R-7C	Retarder	2.00	lb/bbl
1	Spacer	EZ Spacer II	Surfactant, S-801c	Surfactant	1.00	gal/bbl
2	Spacer	EZ Spacer II	WEIGHTING ADDITIVE, W-11	Heavyweight	242.31	lb/bbl
2	Spacer	EZ Spacer II	GW-86	Viscosifier	1.20	lb/bbl
2	Spacer	EZ Spacer II	R-31	Retarder	0.50	lb/bbl
2	Spacer	EZ Spacer II	R-7C	Retarder	2.00	lb/bbl
2	Spacer	EZ Spacer II	Surfactant, S-801c	Surfactant	1.00	gal/bbl
3	Spacer	EZ Spacer II	WEIGHTING ADDITIVE, W-11	Heavyweight	242.31	lb/bbl
3	Spacer	EZ Spacer II	GW-86	Viscosifier	1.20	lb/bbl
3	Spacer	EZ Spacer II	R-31	Retarder	0.50	lb/bbl
3	Spacer	EZ Spacer II	R-7C	Retarder	2.00	lb/bbl
3	Spacer	EZ Spacer II	Surfactant, S-801c	Surfactant	1.00	gal/bbl
4	Lead	Lead	ASTM TYPE IL	Cement	70.00	%
4	Lead	Lead	FLY ASH (ROCKIES)	Extender	30.00	%
4	Lead	Lead	BA-90	BondEnhancer	7.00	lb/sk
4	Lead	Lead	BENTONITE	Viscosifier	2.00	%BWOB
4	Lead	Lead	EC-2	BondEnhancer	3.00	%BWOB



4	Lead	Lead	FL-24	FluidLoss	0.20	%BWOB
4	Lead	Lead	FL-66	FluidLoss	0.30	%BWOB
4	Lead	Lead	FP-24	Defoamer	0.30	%BWOB
4	Lead	Lead	GW-86	Viscosifier	0.10	%BWOB
4	Lead	Lead	SR-20	Retarder	0.20	%BWOB
5	Tail	Tail	CLASS G	Cement	50.00	%
5	Tail	Tail	FLY ASH (ROCKIES)	Extender	50.00	%
5	Tail	Tail	BENTONITE	Viscosifier	4.00	%BWOB
5	Tail	Tail	FL-24	FluidLoss	0.20	%BWOB
5	Tail	Tail	FP-24	Defoamer	0.30	%BWOB
5	Tail	Tail	GW-86	Viscosifier	0.10	%BWOB
5	Tail	Tail	SR-20	Retarder	0.13	%BWOB
5	Tail	Tail	STATIC FREE	Other	0.01	lb/sk
6	Displacement	Retarded Water + Chems	BIOCIDE,BIOC11139W	Biocide	0.01	gal/bbl
6	Displacement	Retarded Water + Chems	CI-27	Other	0.21	gal/bbl
6	Displacement	Retarded Water + Chems	OXYGEN SCAVENGER, OS-30	Other	0.17	gal/bbl
6	Displacement	Retarded Water + Chems	ResCare CS-2	ClayProtection	0.08	gal/bbl
6	Displacement	Retarded Water + Chems	SR-61L	Retarder	0.10	gal/bbl
7	DisplacementFinal	Water + Chems	BIOCIDE,BIOC11139W	Biocide	0.01	gal/bbl
7	DisplacementFinal	Water + Chems	CI-27	Other	0.21	gal/bbl
7	DisplacementFinal	Water + Chems	OXYGEN SCAVENGER, OS-30	Other	0.17	gal/bbl
7	DisplacementFinal	Water + Chems	ResCare CS-2	ClayProtection	0.08	gal/bbl

## Job Logs

Line	Event	Date (MM/DD/YY)	Time (HH:MM)	Density (lb/gal)	Pump Rate (bpm)	Pump Volume (bbls)	Pipe Pressure (psi)	Comment
1	Call Out	10/11/2022	17:00					Customer requested crew for ONL of 23:00
2	Depart Shop	10/11/2022	19:30					Crew has journey management and departs for location
3	Arrive On Location	10/11/2022	20:30					Crew arrives on location and meet with customer
4	Safety Meeting	10/11/2022	20:40					ACC has safety meeting over rigging up iron and hoses
5	Rig Up Iron	10/11/2022	20:50					ACC rigs up iron and hoses
6	Waiting	10/11/2022	22:45					Waiting on rig to finish casing and recurlating well
7	Safety Meeting	10/12/2022	02:37					Safety meeting with ACC, rig crew and company man over job and hazrds
8	Fill Pumps And Lines	10/12/2022	03:11	8.33	5	5	600	Fill pumps and lines
9	Pressure Test	10/12/2022	03:13	8.33	0.5	0.5	4950	Pressure test iron and hoses to 5000 PSI
10	Pump Spacer	10/12/2022	03:22	12	4	40	800	Pump 40 bbls of 12 PPG spacer
11	Pump Spacer	10/12/2022	03:29	11.5	4	20	800	Pump 20 bbls of 11.5 PPG spacer
12	Pump Spacer	10/12/2022	03:33	11	4	20	745	Pump 20 bbls of 11 PPG spacer
13	Pump Lead Cement	10/12/2022	03:39	13.2	8		1000	Pump 330.1 bbls of 13.2 PPG Lead Cement At 7 bpm (1035 Sks, 1.79 Yield, 9.24 Gals/Sks)
14	Pump Lead Cement	10/12/2022	03:51	13.2	8	100	1020	100 bbls into lead cement
15	Pump Lead Cement	10/12/2022	04:03	13.2	8	200	1050	200 bbls into lead cement
16	Pump Lead Cement	10/12/2022	04:15	13.2	8	300	1000	300 bbls into lead cement
17	Pump Lead Cement	10/12/2022	04:29	13.2	8	330.1	1000	Pump total of 330.1 bbls of 13.2 PPG lead cement swap to tail cement
18	Pump Tail Cement	10/12/2022	04:29	13.5	7		1020	Pump 447.3 bbls Of 13.5 PPG Tail Cement At 7 bpm (1670 Sks, 1.50 Yield, 7.57 Gals/Sks, TOT 6953')
19	Pump Tail Cement	10/12/2022	04:42	13.5	7	100	1000	100 bbls into tail cement
20	Pump Tail Cement	10/12/2022	04:54	13.5	7	200	750	200 bbls into tail cement
21	Pump Tail Cement	10/12/2022	05:08	13.5	7	300	755	300 bbls into tail cement
22	Pump Tail Cement	10/12/2022	05:22	13.5	6	400	680	400 bbls into tail cement
23	Shut Down	10/12/2022	05:32			447.3		Shut down pump total of 447.3 bbls of tail cement
24	Wash Pumps And Lines	10/12/2022	05:37	8.33	4	15	45	Wash pumps and lines to tank
25	Drop Bottom Plug	10/12/2022	05:43	8.33	3	5	200	Pump 5 bbls of SR-61L and drop bottom plug
26	Shut Down	10/12/2022	05:45					Shut down and load top plug
27	Drop Top Plug	10/12/2022	05:48	8.33				Drop top plug with company man
28	Pump Displacement	10/12/2022	05:48	8.33	9		1300	Pump total of 397 bbls of fresh water displacement
29	Pump Displacement	10/12/2022	06:01	8.33	9	100	2000	100 bbls into fresh water displacement

30	Pump Displacement	10/12/2022	06:11	8.33	9	200	2800	200 bbls into fresh water displacement
31	Shut Down	10/12/2022	06:21	8.33	9	260	2800	260 bbls into displacement shut down got spacer to surface rig swaps lines and bags to pump into 3 sided tank
32	Pump Displacement	10/12/2022	06:25	8.33	6	260	3150	Come back online at 6 bpm
33	Cement To Surface	10/12/2022	06:43	8.33	6	360	2900	360 bbls into displacement got cement to surface for total of 37 bbls of cement to surface
34	Slow Rate	10/12/2022	06:45	8.33	3	380	2400	380 bbls into displacement slow rate to 3 bpm
35	Bump Bottom Plug	10/12/2022	06:48	8.33	3	392	3200	Bump bottom plug at 392 bbls Bump up to 3200 PSI sheered at 2800 PSI
36	Bump Top Plug	10/12/2022	06:51	8.33	3	397	4200	Bump top plug at 397 bbls bump to 4200 PSI and open at 2400 PSI, shut down pumping
37	Check Floats	10/12/2022	06:54					Hold for 3 mins check floats got 2.5 bbls back floats holding
38	Safety Meeting	10/12/2022	07:00					ACC has safety meeting over rigging down iron and hoses
39	Rig Down Iron	10/12/2022	07:05					ACC rigs down iron and hoses
40	Depart Location	10/12/2022	08:30					ACC has journey management and departs location

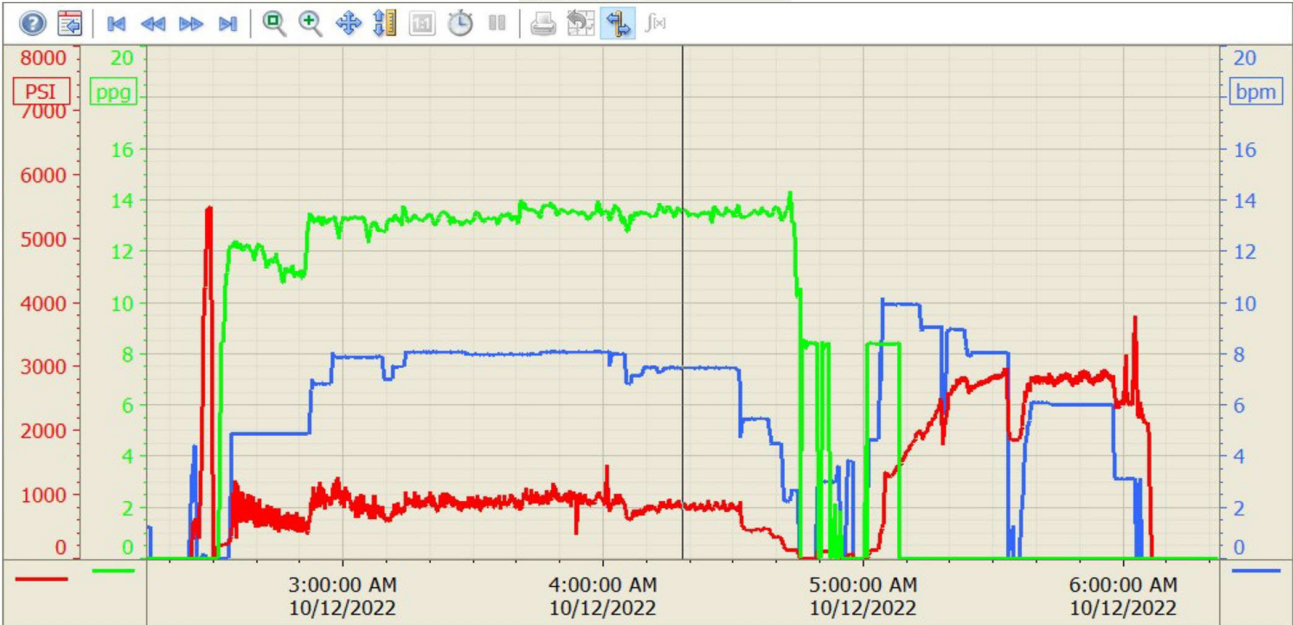
# Pump Diagrams

Summary Trend

Bayswater 5



Lease: Ruby West



10/12/2022 7:40:50 A