



Bayswater Exploration & Production LLC LONG STRING POST JOB REPORT

**Ruby West #4 05-123-51757
S:7 T:7N R:65W Weld CO**

CallSheet #: 84005
Proposal #: 64103



LONG STRING Post Job Report

Attention: Trevor Smith | (720) 335-9045 | trevor.smith@iptenergyservices.com
Bayswater Exploration & Production LLC
730 17TH STREET | DENVER, CO 80202

Dear Trevor Smith,

Thank you for the opportunity to provide cementing services on this well. American Cementing strives to achieve complete customer satisfaction. If you have any questions regarding the services or data provided, please contact American Cementing at any time.

Sincerely,

Aimee Sankovich

Field Engineer I | (307) 689-0323 | aimee.sankovich@americacementing.com

Field Office 1716 E Allison Rd, Cheyenne, WY 82007
Phone: (307) 414-0049

Job Details & Summary

Geometry

Type	Function	OD (in)	ID (in)	Weight (lb/ft)	Top (ft)	Bottom (ft)	Excess (%)
Casing	Outer	9.625	8.921	36	0	1563	0
Open Hole	Outer		8.5		1563	17953	5
Casing	Inner	5.5	4.778	20	0	17953	0

Equipment / People

Unit Type	Unit
Field Storage Silo	FSS-448
Field Storage Silo	FSS-461
Field Storage Silo	FSS-440
Cement Trailer Float	CTF-338
Cement Utility Float	CUF-162
Cement Pump Float	CPF-074

Timing

Event	Date/Time
Call Out	10/17/2022 08:00
Depart Facility	10/17/2022 12:15
On Location	10/17/2022 13:45
Rig Up Iron	10/17/2022 14:00
Job Started	10/17/2022 17:35
Job Completed	10/17/2022 21:35
Rig Down Iron	10/17/2022 21:55
Depart Location	10/17/2022 23:30

General Job Information

Metrics	Value
Well Fluid Density	10 lb/gal
Well Fluid Type	OBM
Rig Circulation Vol	1000 bbls
Rig Circulation Time	3 hours
Calculated Displacement	398 bbls
Actual Displacement	398 bbls
Total Spacer to Surface	80 bbls
Total CMT to Surface	63 bbls

Job Details

Metrics	Value
Flare Prior to Job	No
Flare Prior to Job	0 units
Flare During Job	No
Flare During Job	0 units
Flare at End of Job	No
Flare at End of Job	0 units
Well Full Prior to Job	Yes
Well Fluid Density Into Well	10 lb/gal
Well Fluid Density Out of Well	10 lb/gal

Job Details (cont.)

Metrics	Value
BHCT	225 °F
BHST	225 °F

Water Analysis

Metrics	Value	Recommended
Water Source	None	
Temperature	60 °F	50-80 °F
pH Level	7	5.5-8.5
Chlorides	0 mg/L	0-3000 mg/L
Total Alkalinity	140	0-1000
Total Hardness	250 mg/L	0-500 mg/L
Carbonates	40 mg/L	0-100 mg/L
Sulfates	<200 mg/L	0-1500 mg/L
Potassium	0 mg/L	0-3000 mg/L
Iron	0 mg/L	0-300 mg/L

Circulation

Lost Circulation Experienced
No

Job Execution Information

Fluid	Product	Function	Density (lb/gal)	Yield (ft ³ /sk)	Water Rq. (gal/sk)	Water Rq. (gal/bbl)	Volume (sks)	Volume (bbl)	Designed Top (ft)
1	EZ Spacer II	Spacer	12.00					40.00	0
2	EZ Spacer II	Spacer	11.50					20.00	0
3	EZ Spacer II	Spacer	11.00					20.00	0
4	Lead	Lead	13.20	1.79	9.24		1038.00	330.96	0
5	Tail	Tail	13.50	1.50	7.57		1670.00	447.26	7534
6	Retarded Water + Chems	Displacement	8.37			41.43		10.00	17487
7	Water + Chems	DisplacementFinal	8.37			41.53		388.00	0

Job Fluid Details

Fluid	Type	Fluid	Product	Function	Conc.	Uom
1	Spacer	EZ Spacer II	WEIGHTING ADDITIVE, W-11	Heavyweight	242.31	lb/bbl
1	Spacer	EZ Spacer II	GW-86	Viscosifier	1.20	lb/bbl
1	Spacer	EZ Spacer II	R-31	Retarder	0.50	lb/bbl
1	Spacer	EZ Spacer II	R-7C	Retarder	2.00	lb/bbl
1	Spacer	EZ Spacer II	Surfactant, S-801c	Surfactant	1.00	gal/bbl
2	Spacer	EZ Spacer II	WEIGHTING ADDITIVE, W-11	Heavyweight	242.31	lb/bbl
2	Spacer	EZ Spacer II	GW-86	Viscosifier	1.20	lb/bbl
2	Spacer	EZ Spacer II	R-31	Retarder	0.50	lb/bbl
2	Spacer	EZ Spacer II	R-7C	Retarder	2.00	lb/bbl
2	Spacer	EZ Spacer II	Surfactant, S-801c	Surfactant	1.00	gal/bbl
3	Spacer	EZ Spacer II	WEIGHTING ADDITIVE, W-11	Heavyweight	242.31	lb/bbl
3	Spacer	EZ Spacer II	GW-86	Viscosifier	1.20	lb/bbl
3	Spacer	EZ Spacer II	R-31	Retarder	0.50	lb/bbl
3	Spacer	EZ Spacer II	R-7C	Retarder	2.00	lb/bbl
3	Spacer	EZ Spacer II	Surfactant, S-801c	Surfactant	1.00	gal/bbl
4	Lead	Lead	ASTM TYPE IL	Cement	70.00	%
4	Lead	Lead	FLY ASH (ROCKIES)	Extender	30.00	%
4	Lead	Lead	BA-90	BondEnhancer	7.00	lb/sk
4	Lead	Lead	BENTONITE	Viscosifier	2.00	%BWOB
4	Lead	Lead	EC-2	BondEnhancer	3.00	%BWOB
4	Lead	Lead	FL-24	FluidLoss	0.20	%BWOB
4	Lead	Lead	FL-66	FluidLoss	0.30	%BWOB
4	Lead	Lead	FP-24	Defoamer	0.30	%BWOB
4	Lead	Lead	GW-86	Viscosifier	0.10	%BWOB
4	Lead	Lead	SR-20	Retarder	0.15	%BWOB
5	Tail	Tail	CLASS G	Cement	50.00	%
5	Tail	Tail	FLY ASH (ROCKIES)	Extender	50.00	%
5	Tail	Tail	BENTONITE	Viscosifier	4.00	%BWOB
5	Tail	Tail	FL-24	FluidLoss	0.20	%BWOB
5	Tail	Tail	FP-24	Defoamer	0.30	%BWOB
5	Tail	Tail	GW-86	Viscosifier	0.10	%BWOB
5	Tail	Tail	SR-20	Retarder	0.13	%BWOB
5	Tail	Tail	STATIC FREE	Other	0.01	lb/sk
6	Displacement	Retarded Water + Chems	BIOCIDE,BIOC11139W	Biocide	0.01	gal/bbl
6	Displacement	Retarded Water + Chems	CI-27	Other	0.21	gal/bbl
6	Displacement	Retarded Water + Chems	OXYGEN SCAVENGER, OS-30	Other	0.17	gal/bbl
6	Displacement	Retarded Water + Chems	ResCare CS-2	ClayProtection	0.08	gal/bbl
6	Displacement	Retarded Water + Chems	SR-61L	Retarder	0.10	gal/bbl
7	DisplacementFinal	Water + Chems	BIOCIDE,BIOC11139W	Biocide	0.01	gal/bbl
7	DisplacementFinal	Water + Chems	CI-27	Other	0.21	gal/bbl
7	DisplacementFinal	Water + Chems	OXYGEN SCAVENGER, OS-30	Other	0.17	gal/bbl
7	DisplacementFinal	Water + Chems	ResCare CS-2	ClayProtection	0.08	gal/bbl

Job Logs

Line	Event	Date (MM/DD/YY)	Time (HH:MM)	Density (lb/gal)	Pump Rate (bpm)	Pump Volume (bbls)	Pipe Pressure (psi)	Comment
1	Call Out	10/17/2022	08:00					Customer requested for Crew to be On Location at 14:00.
2	Depart Yard	10/17/2022	12:15					AC Crew has Journey Management and Departs from Shop.
3	Arrive on Location	10/17/2022	13:45					AC Crew Arrives on Location and Meets with Company Representative.
4	Safety Meeting	10/17/2022	13:50					AC Crew has Safety Meeting over Spotting Trucks and Rigging Up Iron.
5	Rig Up Iron	10/17/2022	14:00					AC Crew Rigs Up Iron and Hoses.
6	Waiting Time	10/17/2022	16:30					Waiting on Rig to Finish Circulating.
7	Safety Meeting	10/17/2022	17:00					AC Crew has Safety Meeting with Rig Crew and Company Representative Over Job and Hazards.
8	Fill Lines	10/17/2022	17:35	8.34	5.6	5	300	Fill Pump and Lines with 5 BBLS.
9	Pressure Test	10/17/2022	17:37	8.34	0.5	0.5	5100	Pressure Test Iron and Values 5100 PSI
10	Pump Spacer	10/17/2022	17:48	12	4	40	350	Pump 40 bbls of EZ II Spacer at 12 PPG. At 25 BBLS away we had to shut down and batch and vary rate due to foam issues.
11	Pump Spacer	10/17/2022	18:03	11.5	3	20	350	Pump 20 bbls of EZ II Spacer at 11.5 PPG. At 10 BBLS away we had to shut down and batch up and vary rate due to foam issues.
12	Pump Spacer	10/17/2022	18:14	11	3	20	350	Pump 20 bbls of EZ II Spacer at 11 PPG. At 6 BBLS away we had to change rate and shut down to batch up due to foam issues.
13	Pump Lead Cement	10/17/2022	18:23	13.2	8	186	980	Pumped 331 bbls of Lead Cement at 13.2 PPG (1038 Sks, 1.79 Yield, 9.24 Gal/Sk)
14	Rate Change	10/17/2022	19:04	13.2	5.6	145	480	Decreased Rate to 5.6 BPM
15	Pump Tail Cement	10/17/2022	19:33	13.5	8	450	1010	Pumped 446. bbls of Tail Cement at 13.5 PPG (167 OSks, 1.50 Yield, 7.57 Gal/Sk)
16	Rate Change	10/17/2022	20:20	13.5	5.6	20	175	Slowed Rate to 5.6 BPM to finish Tail Cement / Pumped at Total of 446 bbls of Tail Cement
17	Shutdown	10/17/2022	20:25					Shutdown / Drop Low Pressure Plug / Wash Pump and Lines to Pit
18	Displacement	10/17/2022	20:35	8.34	3	5	140	Pumped First 5 bbls of Fresh Water Displacement with SR-61L
19	Shutdown	10/17/2022	20:37					Shutdown / Drop High Pressure Plug
20	Displacement	10/17/2022	20:41	8.34	5.6	10	200	Finished Pumping first 10 bbls of Fresh Water Displacement with SR-61L
21	Rate Change	10/17/2022	20:42	8.34	10.1		2100	Increased Rate on Displacement to 10 BPM
22	Spacer to Surface	10/17/2022	21:07	8.34	8		3300	At 255 bbls Away into Fresh Water Displacement Spacer 80 BBLS of spacer returned to surface.
23	Cement to Surface	10/17/2022	21:17	8.34	8		3600	At 335 Away into Fresh Water Displacement got Cement to Surface / 63 BBLS of Cement to Surface
24	Rate Change	10/17/2022	21:21	8.34	4	347	2600	At 347 bbls Away into Displacement Slowed Down to 4 BPM to Burst 1st Plug
25	Burst 1st Plug	10/17/2022	21:30	8.34	4	393	3500	1st Plug Burst. Took from 2800 to 3500 PSI
26	Burst 2nd Plug	10/17/2022	21:32	8.34	4	398	4200	At 397 bbls Away into Displacement / Burst 2nd Plug. Took from 2800 PSI to 4300 PSI.
27	Shutdown	10/17/2022	21:32					Pumped a Total of 398 bbls of Fresh Water Displacement with Chems
28	Check Floats	10/17/2022	21:35					Checked Floats / Floats Held 3 bbls Back

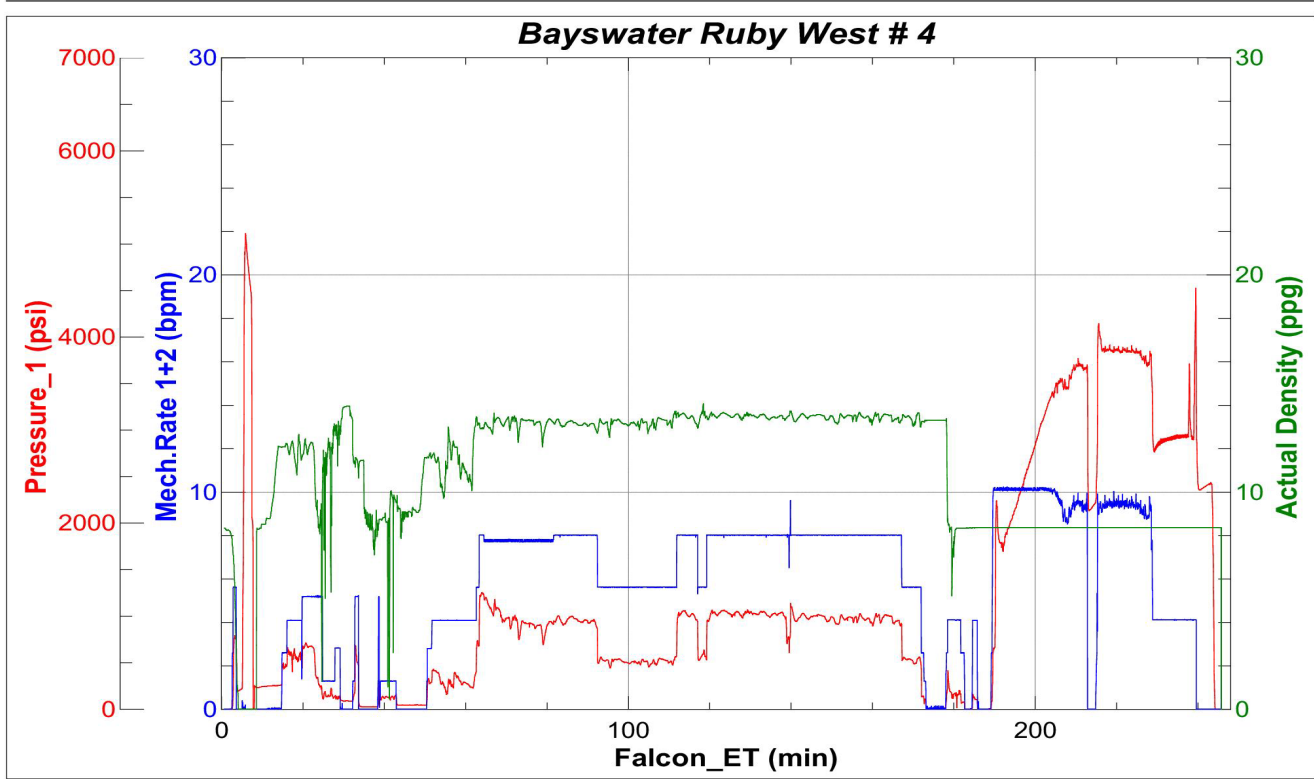


Line	Event	Date (MM/DD/YY)	Time (HH:MM)	Density (lb/gal)	Pump Rate (bpm)	Pump Volume (bbls)	Pipe Pressure (psi)	Comment
29	Rig Down Iron	10/17/2022	21:55					AC Crew Rigged Down Treating Lines and Equipment
30	Depart Location	10/17/2022	23:30					AC Crew Departs Location

Pump Diagrams



JobMaster Program Version 5.01C1
Job Number: 84005
Customer: Bayswater
Well Name: Ruby West 4



Job Start: Monday, October 17, 2022