



Bayswater Exploration & Production LLC LONG STRING POST JOB REPORT

**Ruby West 3 05-123-51758
S:7 T:7N R:65W Weld CO**

**CallSheet #: 84128
Proposal #: 64317**



LONG STRING Post Job Report

Attention: Trevor Smith | (720) 335-9045 | trevor.smith@iptenergyservices.com
Bayswater Exploration & Production LLC
730 17TH STREET | DENVER, CO 80202

Dear Trevor Smith,

Thank you for the opportunity to provide cementing services on this well. American Cementing strives to achieve complete customer satisfaction. If you have any questions regarding the services or data provided, please contact American Cementing at any time.

Sincerely,

Aimee Sankovich

Field Engineer I | (307) 689-0323 | aimee.sankovich@americacementing.com

Field Office 1716 E Allison Rd, Cheyenne, WY 82007
Phone: (307) 414-0049

Job Details & Summary

Geometry

Type	Function	OD (in)	ID (in)	Weight (lb/ft)	Top (ft)	Bottom (ft)	Excess (%)
Casing	Outer	9.625	8.921	36	0	1551	0
Open Hole	Outer		8.5		1551	18173	5
Casing	Inner	5.5	4.778	20	0	18173	0

Equipment / People

Unit Type	Unit
Field Storage Silo	FSS-448
Field Storage Silo	FSS-461
Field Storage Silo	FSS-440
Cement Trailer Float	CTF-566
AS Cement Trailer Float	CTF-031
Cement Trailer Float	CTF-339
Cement Utility Float	CUF-162
Cement Pump Float	CPF-184

Timing

Event	Date/Time
Call Out	10/25/2022 20:00
Depart Facility	10/25/2022 21:30
On Location	10/25/2022 22:30
Rig Up Iron	10/25/2022 23:00
Job Started	10/26/2022 04:09
Job Completed	10/26/2022 08:00
Rig Down Iron	10/26/2022 09:00
Depart Location	10/26/2022 10:00

General Job Information

Metrics	Value
Well Fluid Density	10.6 lb/gal
Well Fluid Type	OBM
Rig Circulation Vol	1600 bbls
Rig Circulation Time	3 hours
Calculated Displacement	401 bbls
Actual Displacement	401 bbls
Total Spacer to Surface	80 bbls
Total CMT to Surface	84 bbls

Job Details

Metrics	Value
Flare Prior to Job	No
Flare Prior to Job	0 units
Flare During Job	No
Flare During Job	0 units
Flare at End of Job	No
Flare at End of Job	0 units
Well Full Prior to Job	Yes
Well Fluid Density Into Well	10.7 lb/gal
Well Fluid Density Out of Well	10.7 lb/gal

Job Details (cont.)

Metrics	Value
BHCT	225 °F
BHST	225 °F

Water Analysis

Metrics	Value	Recommended
Water Source	None	
Temperature	55 °F	50-80 °F
pH Level	7	5.5-8.5
Chlorides	0 mg/L	0-3000 mg/L
Total Alkalinity	180	0-1000
Total Hardness	0 mg/L	0-500 mg/L
Carbonates	0 mg/L	0-100 mg/L
Sulfates	>200 mg/L	0-1500 mg/L
Potassium	0 mg/L	0-3000 mg/L
Iron	0 mg/L	0-300 mg/L

Circulation

Lost Circulation Experienced
No

Job Execution Information

Fluid	Product	Function	Density (lb/gal)	Yield (ft ³ /sk)	Water Rq. (gal/sk)	Water Rq. (gal/bbl)	Volume (sks)	Volume (bbl)	Designed Top (ft)
1	EZ Spacer II	Spacer	12.00					40.00	0
2	EZ Spacer II	Spacer	11.50					20.00	0
3	EZ Spacer II	Spacer	11.00					20.00	0
4	Lead	Lead	13.20	1.79	9.24		1065.00	339.57	0
5	Tail	Tail	13.50	1.50	7.57		1675.00	448.57	7745
6	Retarded Water + Chems	Displacement	8.37			41.43		10.00	17707
7	Water + Chems	DisplacementFinal	8.37			41.53		393.00	0

Job Fluid Details

Fluid	Type	Fluid	Product	Function	Conc.	Uom
1	Spacer	EZ Spacer II	WEIGHTING ADDITIVE, W-11	Heavyweight	242.31	lb/bbl
1	Spacer	EZ Spacer II	GW-86	Viscosifier	1.20	lb/bbl
1	Spacer	EZ Spacer II	R-31	Retarder	0.50	lb/bbl
1	Spacer	EZ Spacer II	R-7C	Retarder	2.00	lb/bbl
1	Spacer	EZ Spacer II	Surfactant, S-801c	Surfactant	1.00	gal/bbl
2	Spacer	EZ Spacer II	WEIGHTING ADDITIVE, W-11	Heavyweight	242.31	lb/bbl
2	Spacer	EZ Spacer II	GW-86	Viscosifier	1.20	lb/bbl
2	Spacer	EZ Spacer II	R-31	Retarder	0.50	lb/bbl
2	Spacer	EZ Spacer II	R-7C	Retarder	2.00	lb/bbl
2	Spacer	EZ Spacer II	Surfactant, S-801c	Surfactant	1.00	gal/bbl
3	Spacer	EZ Spacer II	WEIGHTING ADDITIVE, W-11	Heavyweight	242.31	lb/bbl
3	Spacer	EZ Spacer II	GW-86	Viscosifier	1.20	lb/bbl
3	Spacer	EZ Spacer II	R-31	Retarder	0.50	lb/bbl
3	Spacer	EZ Spacer II	R-7C	Retarder	2.00	lb/bbl
3	Spacer	EZ Spacer II	Surfactant, S-801c	Surfactant	1.00	gal/bbl
4	Lead	Lead	ASTM TYPE IL	Cement	70.00	%
4	Lead	Lead	FLY ASH (ROCKIES)	Extender	30.00	%
4	Lead	Lead	BA-90	BondEnhancer	7.00	lb/sk
4	Lead	Lead	BENTONITE	Viscosifier	2.00	%BWOB
4	Lead	Lead	EC-2	BondEnhancer	3.00	%BWOB
4	Lead	Lead	FL-24	FluidLoss	0.20	%BWOB
4	Lead	Lead	FL-66	FluidLoss	0.30	%BWOB
4	Lead	Lead	FP-24	Defoamer	0.30	%BWOB
4	Lead	Lead	GW-86	Viscosifier	0.10	%BWOB
4	Lead	Lead	SR-20	Retarder	0.15	%BWOB
5	Tail	Tail	CLASS G	Cement	50.00	%
5	Tail	Tail	FLY ASH (ROCKIES)	Extender	50.00	%
5	Tail	Tail	BENTONITE	Viscosifier	4.00	%BWOB
5	Tail	Tail	FL-24	FluidLoss	0.20	%BWOB
5	Tail	Tail	FP-24	Defoamer	0.30	%BWOB
5	Tail	Tail	GW-86	Viscosifier	0.10	%BWOB
5	Tail	Tail	SR-20	Retarder	0.11	%BWOB
5	Tail	Tail	STATIC FREE	Other	0.01	lb/sk
6	Displacement	Retarded Water + Chems	BIOCIDE,BIOC11139W	Biocide	0.01	gal/bbl
6	Displacement	Retarded Water + Chems	CI-27	Other	0.21	gal/bbl
6	Displacement	Retarded Water + Chems	OXYGEN SCAVENGER, OS-30	Other	0.17	gal/bbl
6	Displacement	Retarded Water + Chems	ResCare CS-2	ClayProtection	0.08	gal/bbl
6	Displacement	Retarded Water + Chems	SR-61L	Retarder	0.10	gal/bbl
7	DisplacementFinal	Water + Chems	BIOCIDE,BIOC11139W	Biocide	0.01	gal/bbl
7	DisplacementFinal	Water + Chems	CI-27	Other	0.21	gal/bbl
7	DisplacementFinal	Water + Chems	OXYGEN SCAVENGER, OS-30	Other	0.17	gal/bbl
7	DisplacementFinal	Water + Chems	ResCare CS-2	ClayProtection	0.08	gal/bbl

Job Logs

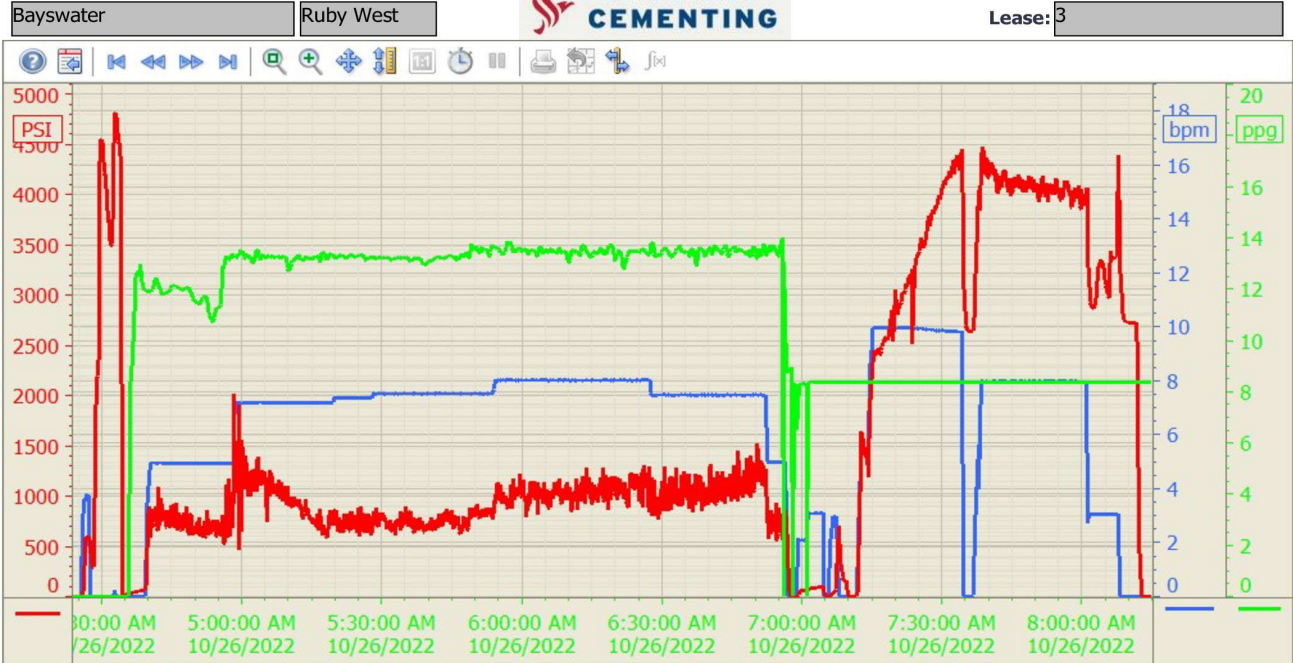
Line	Event	Date (MM/DD/YY)	Time (HH:MM)	Density (lb/gal)	Pump Rate (bpm)	Pump Volume (bbls)	Pipe Pressure (psi)	Comment
1	Callout	10/25/2022	20:00					Crew called out for Baywater 5.5 production job.
2	Safety Meeting	10/25/2022	21:00					
3	Arrive On Location	10/25/2022	22:00					Met with crew and discussed safety during travel and equipment that was going on location.
4	Pre rig up meeting	10/25/2022	22:15					Met with crew and discussed hazards during rig up.
5	Rig up iron	10/25/2022	22:30					
6	Waiting on rig	10/25/2020	23:00					Waiting on rig to circulate.
7	Pre job safety meeting	10/26/2022	03:30					Met with rig crew and ACC crew and discussed job procedures.
8	Fill lines	10/26/2022	04:09	8.4	3	5	600	Pumped fresh water ahead to fill lines and establish circulation.
9	Pressure Test	10/26/2022	04:12					Test lines to 5000 psi.
10	Pump spacer 1	10/26/2022	04:23	12	5	40	800	Mixed and pumped 40 bbls of spacer @ 12.0 ppg.
11	Pump spacer 2	10/26/2022	04:32	11.5	3	20	800	Mixed and pumped 20 bbls of spacer @ 11.5 ppg.
12	Pump Spacer 3	10/26/2022	04:36	11	5	20	800	Mixed and pumped 20 bbls of spacer @ 11.0 ppg.
13	Pump lead cmt	10/26/2022	04:42	13.2	7	352	900	Mixed and pumped 1065 sks of lead cmt @ 13.2 ppg 1.79 yld 9.6 gal/sk.
14	Pump tail cmt	10/26/2022	05:33	13.5	8	451	1100	Mixed and pumped 1675 sks of tail cmt @ 13.5 ppg 1.50 yld 7.6 gal/sk
15	Shutdown	10/26/2022	06:40					Aligned valves to wash pumps and lines.
16	Wash pumps and lines	10/26/2022	06:42					Washed pumps and lines to pit.
17	Drop plug	10/26/2022	06:47					Removed top cap from cmt head to load 1st plug.
18	Pump displacement	10/26/2022	06:49	8.4	3	5	500	Pumped 5 bbls of SCR water.
19	Shutdown	10/26/2022	06:51					
20	Drop plug	10/26/2022	06:53					Remover top cap from cmt head to load 2nd plug.
21	Pump displacement	10/26/2022	06:56	8.4	10	385	3900	Pumped 5 bbls of SCR water and continued to pump fresh water displacement with chemicals.
22	Slow rate	10/26/2022	00:00	8.4	3	15	3000	Slowed rate the last 20 bbls to 3bpm to land and burts plug.
23	Bump plug	10/26/2022	07:47				3600	1st plug bumped @ 3000 psi and burst at 3600 psi.
24	Pump displacement	10/26/2022	07:47	8.4			3000	Continued pumping 3 bpm with 3000 psi.
25	Bump plug	10/26/2022	07:50				4100	2nd plug landed at 3000 psi and burst at 4100 psi.
26	Shutdown	10/26/2022	07:50				2800	Shutdown to check floats. Top of wet shoe is 18039 ft.
27	Check floats	10/26/2022	07:56				0	3.5 bbls back and floats held
28	End job	10/26/2022	08:00					Washed up equipment and rig stack and lines.



Line	Event	Date (MM/DD/YY)	Time (HH:MM)	Density (lb/gal)	Pump Rate (bpm)	Pump Volume (bbls)	Pipe Pressure (psi)	Comment
29	Pre-rig down meeting	10/26/2022	08:20					Met with crew and discussed hazards during rig down.
30	Rig down equipment	10/26/2022	08:30					Equipment rig down.
31	Crew leave location	10/26/2022	10:00					Thank you for using American Cementing.

Pump Diagrams

Summary Trend



10/26/2022 9:16:18 A