



Bayswater Exploration & Production LLC LONG STRING POST JOB REPORT

**Ruby West #10 05-123-51751
S:7 T:7N R:65W Weld CO**

CallSheet #: 83234
Proposal #: 62903



LONG STRING Post Job Report

Attention: Trevor Smith | (720) 335-9045 | trevor.smith@iptenergyservices.com
Bayswater Exploration & Production LLC
730 17TH STREET | DENVER, CO 80202

Dear Trevor Smith,

Thank you for the opportunity to provide cementing services on this well. American Cementing strives to achieve complete customer satisfaction. If you have any questions regarding the services or data provided, please contact American Cementing at any time.

Sincerely,

Jason Creel

Field Engineer Lead | (307) 256-0306 | jason.creel@americacementing.com

Field Office 1716 E Allison Rd, Cheyenne, WY 82007
Phone: (307) 414-0049

Job Details & Summary

Geometry

Type	Function	OD (in)	ID (in)	Weight (lb/ft)	Top (ft)	Bottom (ft)	Excess (%)
Casing	Outer	9.625	8.921	36	0	1550	0
Open Hole	Outer		8.5		1550	18100	5
Casing	Inner	5.5	4.778	20	0	18100	0

Equipment / People

Unit Type	Unit
AS Cement Trailer Float	CTF-9594
AS Cement Trailer Float	CTF-9566
Field Storage Silo	FSS-448
Cement Trailer Float	CTF-566
AS Cement Trailer Float	CTF-308
Cement Trailer Float	CTF-202
Cement Trailer Float	CTF-339
Field Storage Silo	FSS-461
Field Storage Silo	FSS-440
Cement Trailer Float	CTF-003
AS Cement Trailer Float	CTF-2944
Cement Utility Float	CUF-158
Cement Pump Float	CPF-184

Timing

Event	Date/Time
Call Out	9/2/2022 13:00
Depart Facility	9/2/2022 17:00
On Location	9/2/2022 18:30
Rig Up Iron	9/2/2022 19:00
Job Started	9/2/2022 21:45
Job Completed	9/3/2022 01:23
Rig Down Iron	9/3/2022 01:30
Depart Location	9/3/2022 03:30

General Job Information

Metrics	Value
Well Fluid Density	10.6 lb/gal
Well Fluid Type	OBM
Rig Circulation Vol	2000 bbls
Rig Circulation Time	3 hours
Calculated Displacement	400.75 bbls
Actual Displacement	400 bbls
Total Spacer to Surface	80 bbls
Total CMT to Surface	40 bbls

Casing Equipment

Type	Description	Qty
CENTRALIZER,5-1/2"NON-WELD	Rigid	212

Job Details

Metrics	Value
Flare Prior to Job	No
Flare Prior to Job	0 units
Flare During Job	No
Flare During Job	0 units
Flare at End of Job	No
Flare at End of Job	0 units
Well Full Prior to Job	Yes
Well Fluid Density Into Well	10.6 lb/gal
Well Fluid Density Out of Well	10.6 lb/gal

Job Details (cont.)

Metrics	Value
BHCT	225 °F
BHST	225 °F

Water Analysis

Metrics	Value	Recommended
Water Source	Upright Rig Tank	
Temperature	65 °F	50-80 °F
pH Level	7	5.5-8.5
Chlorides	0 mg/L	0-3000 mg/L
Total Alkalinity	180	0-1000
Total Hardness	. mg/L	0-500 mg/L
Carbonates	. mg/L	0-100 mg/L
Sulfates	>400 mg/L	0-1500 mg/L
Potassium	0 mg/L	0-3000 mg/L
Iron	1 mg/L	0-300 mg/L

Circulation

Lost Circulation Experienced
No

Job Execution Information

Fluid	Product	Function	Density (lb/gal)	Yield (ft ³ /sk)	Water Rq. (gal/sk)	Water Rq. (gal/bbl)	Volume (sks)	Volume (bbl)	Designed Top (ft)
1	EZ Spacer II	Spacer	12.00					40.00	0
2	EZ Spacer II	Spacer	11.50					20.00	0
3	EZ Spacer II	Spacer	11.00					20.00	0
4	ACem P100.3.01C	Lead	13.20	1.79	9.36		1065.00	339.29	0
5	ACem P50.6.02C	Tail	13.50	1.50	7.57		1665.00	445.89	7725
6	Retarded Water + Chems	Displacement	8.37			41.43		10.00	17634
7	Water + Chems	DisplacementFinal	8.37			41.53		392.00	0

Job Fluid Details

Fluid	Type	Fluid	Product	Function	Conc.	Uom
1	Spacer	EZ Spacer II	WEIGHTING ADDITIVE, W-11	Heavyweight	242.31	lb/bbl
1	Spacer	EZ Spacer II	GW-86	Viscosifier	1.20	lb/bbl
1	Spacer	EZ Spacer II	R-31	Retarder	0.50	lb/bbl
1	Spacer	EZ Spacer II	R-7C	Retarder	2.00	lb/bbl
1	Spacer	EZ Spacer II	Surfactant, S-801c	Surfactant	1.00	gal/bbl
2	Spacer	EZ Spacer II	WEIGHTING ADDITIVE, W-11	Heavyweight	242.31	lb/bbl
2	Spacer	EZ Spacer II	GW-86	Viscosifier	1.20	lb/bbl
2	Spacer	EZ Spacer II	R-31	Retarder	0.50	lb/bbl
2	Spacer	EZ Spacer II	R-7C	Retarder	2.00	lb/bbl
2	Spacer	EZ Spacer II	Surfactant, S-801c	Surfactant	1.00	gal/bbl
3	Spacer	EZ Spacer II	WEIGHTING ADDITIVE, W-11	Heavyweight	242.31	lb/bbl
3	Spacer	EZ Spacer II	GW-86	Viscosifier	1.20	lb/bbl
3	Spacer	EZ Spacer II	R-31	Retarder	0.50	lb/bbl
3	Spacer	EZ Spacer II	R-7C	Retarder	2.00	lb/bbl
3	Spacer	EZ Spacer II	Surfactant, S-801c	Surfactant	1.00	gal/bbl
4	Lead	ACem P100.3.01C	ASTM TYPE III	Cement	70.00	%
4	Lead	ACem P100.3.01C	FLY ASH (ROCKIES)	Extender	30.00	%
4	Lead	ACem P100.3.01C	BA-90	BondEnhancer	3.00	lb/sk
4	Lead	ACem P100.3.01C	BENTONITE	Viscosifier	4.00	%BWOB
4	Lead	ACem P100.3.01C	EC-2	BondEnhancer	3.00	%BWOB
Fluid	Type	Fluid	Product	Function	Conc.	Uom
4	Lead	ACem P100.3.01C	FL-24	FluidLoss	0.20	%BWOB
4	Lead	ACem P100.3.01C	FL-66	FluidLoss	0.30	%BWOB



4	Lead	ACem P100.3.01C	FP-24	Defoamer	0.30	%BWOB
4	Lead	ACem P100.3.01C	GW-86	Viscosifier	0.05	%BWOB
4	Lead	ACem P100.3.01C	SR-20	Retarder	0.23	%BWOB
5	Tail	ACem P50.6.02C	CLASS G	Cement	50.00	%
5	Tail	ACem P50.6.02C	FLY ASH (ROCKIES)	Extender	50.00	%
5	Tail	ACem P50.6.02C	BENTONITE	Viscosifier	4.00	%BWOB
5	Tail	ACem P50.6.02C	FL-24	FluidLoss	0.20	%BWOB
5	Tail	ACem P50.6.02C	FP-24	Defoamer	0.30	%BWOB
5	Tail	ACem P50.6.02C	GW-86	Viscosifier	0.10	%BWOB
5	Tail	ACem P50.6.02C	SR-20	Retarder	0.11	%BWOB
5	Tail	ACem P50.6.02C	STATIC FREE	Other	0.01	lb/sk
6	Displacement	Retarded Water + Chems	BIOCIDE,BIOC11139W	Biocide	0.01	gal/bbl
6	Displacement	Retarded Water + Chems	CI-27	Other	0.21	gal/bbl
6	Displacement	Retarded Water + Chems	OXYGEN SCAVENGER, OS-30	Other	0.17	gal/bbl
6	Displacement	Retarded Water + Chems	ResCare CS-2	ClayProtection	0.08	gal/bbl
6	Displacement	Retarded Water + Chems	SR-61L	Retarder	0.10	gal/bbl
7	DisplacementFinal	Water + Chems	BIOCIDE,BIOC11139W	Biocide	0.01	gal/bbl
7	DisplacementFinal	Water + Chems	CI-27	Other	0.21	gal/bbl
7	DisplacementFinal	Water + Chems	OXYGEN SCAVENGER, OS-30	Other	0.17	gal/bbl
7	DisplacementFinal	Water + Chems	ResCare CS-2	ClayProtection	0.08	gal/bbl

Job Logs

Line	Event	Date (MM/DD/YY)	Time (HH:MM)	Density (lb/gal)	Pump Rate (bpm)	Pump Volume (bbls)	Pipe Pressure (psi)	Comment
1	Call Out	9/2/2022	13:00					ACC gets called out, Requested time OL 1900 hrs
2	Depart Facility	9/2/2022	17:00					ACC departs facility Cheyenne Wy
3	Arrive To Location	9/2/2022	18:30					ACC arrives to location , Rig is currently rigging down casing crew
4	Rig Up	9/2/2022	19:00					ACC spots in units and gets rigged up
5	Safety Meeting	9/2/2022	21:30					ACC had a pre job safety meeting with rig hands and OSR , went over job procedure
6	Pressure Test	9/2/2022	21:45				5000	Pressure test pumps and lines to 5000 psi
7	Pump EZ II Spacer	9/2/2022	21:50	12	6	40	801	Pump 40 bbls 12 ppg EZ II Spacer at 6 bpm w/ 801 psi
8	Pump EZ II Spacer	9/2/2022	22:00	11.5	6	60	705	Pump 20 bbls of 11.5 ppg EZ II Spacer at 6 bpm w/ 705 psi
9	Pump EZ II Spacer	9/2/2022	22:05	11	6	80	658	Pump 20 bbls of 11 ppg EZ II Spacer at 6 bpm w/ 658 psi (Pumped total of 80 bbls EZ II Spacer)
10	Pump Lead CMT	9/2/2022	22:10	13.2	8	339.29	1000	Pumped total of 339.29 bbls of LEAD CMT (1065 sks 13.2 ppg 1.79 yld 9.4 g/sk) at 8 bpm w/ 1000 psi
11	Pump Tail CMT	9/2/2022	22:55	13.5	8	445.89	705	Pumped total of 445.89 bbls of TAIL CMT (1665 sks 13.5 ppg 1.50 yld 7.6 g/sk) at 8 bpm w/705 psi
12	Shut Down	9/3/2022	00:05					Shut Down Pumping CMT
13	Wash Pump/Lines	9/3/2022	00:10					Wash pumps and lines to open top
14	Drop Bottom Plug	9/3/2022	00:15	8.33				Drop 1 st plug
15	Pump 5 BBL W/SR61L	9/3/2022	00:20	8.33	5	5		Pump 5 bbls w/SR61L at 5 bpm w/ 200 psi
16	Drop Top Plug	9/3/2022	00:25	8.33				Shut Down , Drop 2nd Plug
17	Pump Disp	9/3/2022	00:26	8.33	10		300	Came back on line w/ disp at 10 bpm w/ 300 psi
18	Spacer To Surface	9/3/2022	00:57	8.33	10	280		At 280 bbls away into disp shut down Due to got Spacer to surface , rig swapps returns to open top
19	Came On Line	9/3/2022	01:00	8.33	8.5		3024	Came back on line with disp at 8.5 bpm w/ 3024 psi
20	Cement To Surface	9/3/2022	01:11	8.33	8.5	360	3215	At 360 bbls away into disp got cement back to surface at 8.5 bpm w/ 3215 psi
21	Slow Rate	9/3/2022	01:13	8.33	3	380	2300	At 380 bbls away into disp slow down rate to 3 bpm w/ 2300 psi
22	Burst 1st Plug	9/3/2022	01:18	8.33	3	395	3400	At 395 bbls away burst 1st plug at 3400 psi at 3 bpm
23	Burst 2nd Plug	9/3/2022	01:20	8.33	3	400	3900	At 400 bbls away burst 2nd plug at 3900 psi at 3 bpm and shut down immediately
24	Check Floats	9/3/2022	01:23					Check floats got 3 bbls back
25	Rig Down	9/3/2022	01:30					ACC starts rigging down equipment
26	Depart Location	9/3/2022	03:30					ACC departs location
27	Other	9/3/2022	04:00			40		Total Cement to Surface - 40 bbls

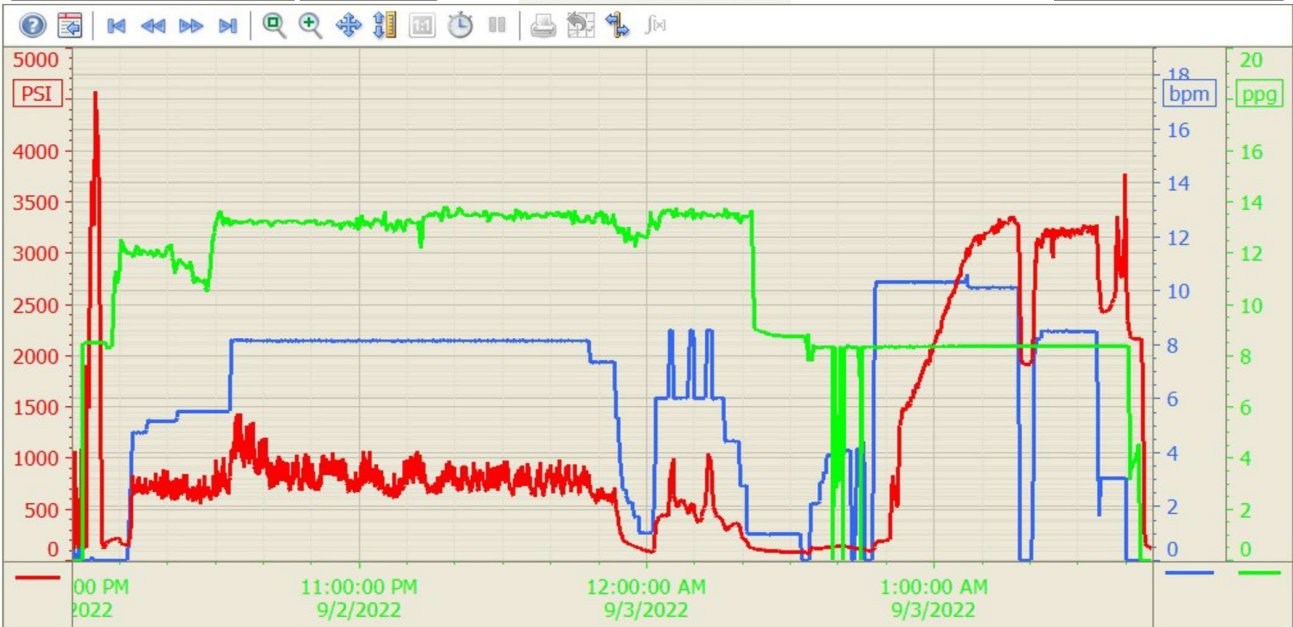
Pump Diagrams

Summary Trend

Bayswater 6



Lease: Ruby East



9/3/2022 3:05:48 AM