



Bayswater Exploration & Production LLC LONG STRING POST JOB REPORT

**Ruby East #4 05-123-51739
S:7 T:7N R:65W Weld CO**

**CallSheet #: 83355
Proposal #: 62893**



LONG STRING Post Job Report

Attention: Trevor Smith | (720) 335-9045 | trevor.smith@iptenergyservices.com
Bayswater Exploration & Production LLC
730 17TH STREET | DENVER, CO 80202

Dear Trevor Smith,

Thank you for the opportunity to provide cementing services on this well. American Cementing strives to achieve complete customer satisfaction. If you have any questions regarding the services or data provided, please contact American Cementing at any time.

Sincerely,

Jason Creel

Field Engineer Lead | (307) 256-0306 | jason.creel@americacementing.com

Field Office 1716 E Allison Rd, Cheyenne, WY 82007
Phone: (307) 414-0049

Job Details & Summary

Geometry

Type	Function	OD (in)	ID (in)	Weight (lb/ft)	Top (ft)	Bottom (ft)	Excess (%)
Casing	Outer	9.625	8.921	36	0	1565	0
Open Hole	Outer		8.5		1565	18174	5
Casing	Inner	5.5	4.778	20	0	18174	0

Equipment / People

Unit Type	Unit
AS Cement Trailer Float	CTF-9054
AS Cement Trailer Float	CTF-018
Field Storage Silo	FSS-463
Field Storage Silo	FSS-465
Field Storage Silo	FSS-442
Cement Trailer Float	CTF-232
Cement Trailer Float	CTF-215
Cement Trailer Float	CTF-001
AS Cement Trailer Float	CTF-031
AS Cement Trailer Float	CTF-9594
Cement Trailer Float	CTF-002
Cement Pump Float	CPF-184
Cement Utility Float	CUF-163

Timing

Event	Date/Time
Call Out	9/12/2022 07:00
Depart Facility	9/12/2022 09:30
On Location	9/12/2022 11:00
Rig Up Iron	9/12/2022 11:30
Job Started	9/12/2022 17:02
Job Completed	9/12/2022 20:31
Rig Down Iron	9/12/2022 21:00
Depart Location	9/12/2022 23:00

General Job Information

Metrics	Value
Well Fluid Density	10.4 lb/gal
Well Fluid Type	OBM
Rig Circulation Vol	1989 bbls
Rig Circulation Time	3 hours
Calculated Displacement	403 bbls
Actual Displacement	400 bbls
Total Spacer to Surface	80 bbls
Total CMT to Surface	40 bbls

Casing Equipment

Type	Description	Qty
CENTRALIZER,5-1/2"NON-WELD	Ridged	216

Job Details

Metrics	Value
Flare Prior to Job	Yes
Flare Prior to Job	6000 units
Flare During Job	No
Flare During Job	0 units
Flare at End of Job	No
Flare at End of Job	0 units
Well Full Prior to Job	Yes
Well Fluid Density Into Well	10.4 lb/gal
Well Fluid Density Out of Well	10.4 lb/gal

Job Details (cont.)

Metrics	Value
BHCT	225 °F
BHST	225 °F

Water Analysis

Metrics	Value	Recommended
Water Source	Upright Rig Tank	
Temperature	60 °F	50-80 °F
pH Level	7	5.5-8.5
Chlorides	0 mg/L	0-3000 mg/L
Total Alkalinity	140	0-1000
Total Hardness	250 mg/L	0-500 mg/L
Carbonates	40 mg/L	0-100 mg/L
Sulfates	<250 mg/L	0-1500 mg/L
Potassium	0 mg/L	0-3000 mg/L
Iron	0 mg/L	0-300 mg/L

Circulation

Lost Circulation Experienced
No

Job Execution Information

Fluid	Product	Function	Density (lb/gal)	Yield (ft ³ /sk)	Water Rq. (gal/sk)	Water Rq. (gal/bbl)	Volume (sks)	Volume (bbl)	Designed Top (ft)
1	EZ Spacer II	Spacer	12.00					40.00	0
2	EZ Spacer II	Spacer	11.50					20.00	0
3	EZ Spacer II	Spacer	11.00					20.00	0
4	Lead	Lead	13.50	1.55	7.81		1145.00	316.20	0
5	Tail	Tail	13.50	1.50	7.57		1760.00	471.36	7200
6	Retarded Water + Chems	Displacement	8.37			41.43		10.00	17708
7	Water + Chems	DisplacementFinal	8.37			41.53		393.00	0

Job Fluid Details

Fluid	Type	Fluid	Product	Function	Conc.	Uom
1	Spacer	EZ Spacer II	WEIGHTING ADDITIVE, W-11	Heavyweight	242.31	lb/bbl
1	Spacer	EZ Spacer II	GW-86	Viscosifier	1.20	lb/bbl
1	Spacer	EZ Spacer II	R-31	Retarder	0.50	lb/bbl
1	Spacer	EZ Spacer II	R-7C	Retarder	2.00	lb/bbl
1	Spacer	EZ Spacer II	Surfactant, S-801c	Surfactant	1.00	gal/bbl
2	Spacer	EZ Spacer II	WEIGHTING ADDITIVE, W-11	Heavyweight	242.31	lb/bbl
2	Spacer	EZ Spacer II	GW-86	Viscosifier	1.20	lb/bbl
2	Spacer	EZ Spacer II	R-31	Retarder	0.50	lb/bbl
2	Spacer	EZ Spacer II	R-7C	Retarder	2.00	lb/bbl
2	Spacer	EZ Spacer II	Surfactant, S-801c	Surfactant	1.00	gal/bbl
3	Spacer	EZ Spacer II	WEIGHTING ADDITIVE, W-11	Heavyweight	242.31	lb/bbl
3	Spacer	EZ Spacer II	GW-86	Viscosifier	1.20	lb/bbl
3	Spacer	EZ Spacer II	R-31	Retarder	0.50	lb/bbl
3	Spacer	EZ Spacer II	R-7C	Retarder	2.00	lb/bbl
3	Spacer	EZ Spacer II	Surfactant, S-801c	Surfactant	1.00	gal/bbl
4	Lead	Lead	CLASS G	Cement	50.00	%
4	Lead	Lead	FLY ASH (ROCKIES)	Extender	50.00	%
4	Lead	Lead	BENTONITE	Viscosifier	4.00	%BWOB
4	Lead	Lead	EC-2	BondEnhancer	3.00	%BWOB
4	Lead	Lead	FL-24	FluidLoss	0.20	%BWOB
4	Lead	Lead	FL-66	FluidLoss	0.30	%BWOB
4	Lead	Lead	FP-24	Defoamer	0.30	%BWOB
4	Lead	Lead	GW-86	Viscosifier	0.10	%BWOB



Fluid	Type	Fluid	Product	Function	Conc.	Uom
4	Lead	Lead	SR-20	Retarder	0.05	%BWOB
4	Lead	Lead	STATIC FREE	Other	0.01	lb/sk
5	Tail	Tail	CLASS G	Cement	50.00	%
5	Tail	Tail	FLY ASH (ROCKIES)	Extender	50.00	%
5	Tail	Tail	BENTONITE	Viscosifier	4.00	%BWOB
5	Tail	Tail	FL-24	FluidLoss	0.20	%BWOB
5	Tail	Tail	FP-24	Defoamer	0.30	%BWOB
5	Tail	Tail	GW-86	Viscosifier	0.10	%BWOB
5	Tail	Tail	SR-20	Retarder	0.13	%BWOB
5	Tail	Tail	STATIC FREE	Other	0.01	lb/sk
6	Displacement	Retarded Water + Chems	BIOCIDE,BIOC11139W	Biocide	0.01	gal/bbl
6	Displacement	Retarded Water + Chems	CI-27	Other	0.21	gal/bbl
6	Displacement	Retarded Water + Chems	OXYGEN SCAVENGER, OS-30	Other	0.17	gal/bbl
6	Displacement	Retarded Water + Chems	ResCare CS-2	ClayProtection	0.08	gal/bbl
6	Displacement	Retarded Water + Chems	SR-61L	Retarder	0.10	gal/bbl
7	DisplacementFinal	Water + Chems	BIOCIDE,BIOC11139W	Biocide	0.01	gal/bbl
7	DisplacementFinal	Water + Chems	CI-27	Other	0.21	gal/bbl
7	DisplacementFinal	Water + Chems	OXYGEN SCAVENGER, OS-30	Other	0.17	gal/bbl
7	DisplacementFinal	Water + Chems	ResCare CS-2	ClayProtection	0.08	gal/bbl

Job Logs

Line	Event	Date (MM/DD/YY)	Time (HH:MM)	Density (lb/gal)	Pump Rate (bpm)	Pump Volume (bbls)	Pipe Pressure (psi)	Comment
1	Call Out	9/12/2022	07:00					ACC gets called out. Requested t/l 13:00
2	Depart Facility	9/12/2022	09:30					ACC departs facility
3	Arrived To Location	9/12/2022	11:00					ACC arrives to location. Rig is currently circulating
4	Rig Up	9/12/2022	11:30					ACC spots in units and rigs up equipment
5	Saftey Meeting	9/12/2022	16:42					ACC had a pre-job saftey meeting with rig hands and OSR. Went over job procedure
6	Pressure Test	9/12/2022	17:02				4800	Pressure test pump/lines to 4800PSI
7	Pump EZ-II Spacer	9/12/2022	17:09	12	6		300	Start mixing and pumping EZ-II Spacer @ 12PPG @ 6BPM w/ 300PSI
8	Pump EZ-II Spacer	9/12/2022	17:15	11.5	6	40	700	At 40BBLS away into EZ-II Spacer, dropped to 11.5PPG @ 6BPM w/ 700PSI
9	Pump EZ-II Spacer	9/12/2022	17:19	11	6	60	500	At 60BBLS away into EZ-II Spacer, dropped to 11PPG @ 6BPM w/ 500PSI
10	Pump Lead CMT	9/12/2022	17:24	13.5	8		1000	Start mixing and pumping Lead CMT, 13.5PPG @ 8BPM w/ 1000PSI (1145SKS 1.55YLD 7.8G/SK)
11	Slow Rate	9/12/2022	18:00	13.5	6	250	400	At 250BBLS away into Lead CMT, slowed rate to 6BPM w/ 400PSI
12	Shut Down	9/12/2022	18:16	13.5		295	400	At 295BBLS away into Lead CMT, shut down as line from bulk truck was packed off and couldn't get product
13	Back Online	9/12/2022	18:19	13.5	6		300	Came back online with Lead CMT @ 6BPM w/ 300PSI
14	Pump Tail CMT	9/12/2022	18:28	13.5	8	470.18	600	Pumped 470.18BBLS of Tail CMT, 13.5PPG @ 8BPM w/ 600PSI (1760SKS 1.50YLD 7.6G/SK)
15	Shut Down	9/12/2022	19:30					Shut down pumping CMT
16	Wash Pump/Lines	9/12/2022	19:31					Washed pump/lines to the open top
17	Drop Bottom Plug	9/12/2022	19:33					Dropped bottom plug
18	Pump 5 BBLs SR-61L	9/12/2022	19:37	8.33	5	5	250	Pumped 5BBLs w/ SR-61L for wet shoe @ 5BPM w/ 250PSI
19	Drop Top Plug	9/12/2022	19:39					Shut down, dropped top plug
20	Pump Disp	9/12/2022	19:40	8.33	10		400	Came back online with disp @ 10BPM w/ 400PSI
21	Slow Rate	9/12/2022	20:01	8.33	9	190	3000	Slowed down rate 190BBLS away into disp @ 9BPM w/ 3000PSI
22	Spacer To Surface	9/12/2022	20:11	8.33	9	280	3100	At 280BBLS away into disp, got EZ-II Spacer back to surface @ 9BPM w/ 3100PSI
23	CMT To Surface	9/12/2022	20:22	8.33	9	360	3100	CMT to surface 360BBLS away into disp @ 9BPM w/ 3100PSI
24	Slow Rate	9/12/2022	20:23	8.33	3	380	2400	At 380BBLS away into disp, slowed rate to 3BPM w/ 2400PSI
25	Burst Bottom Plug	9/12/2022	20:26	8.33	3	395	2400	At 395BBLS away into disp, burst bottom plug @ 3BPM w/ 3400PSI
26	Burst Top Plug	9/12/2022	20:29	8.33	3	400	2400	At 400BBLS away into disp, burst top plug @ 3BPM w/ 3800PSI
27	Shut Down	9/12/2022	20:30					Shut down pumping disp
28	Check Floats	9/12/2022	20:32					Checked floats, 3 BBLs back
29	Rig Down	9/12/2022	21:00					ACC rigged down equipment



Line	Event	Date (MM/DD/YY)	Time (HH:MM)	Density (lb/gal)	Pump Rate (bpm)	Pump Volume (bbls)	Pipe Pressure (psi)	Comment
30	Depart Location	9/12/2022	23:00					ACC departed loaction
31	Other	9/12/2022	23:01			40		Total CMT back to surface, 40 BBLS

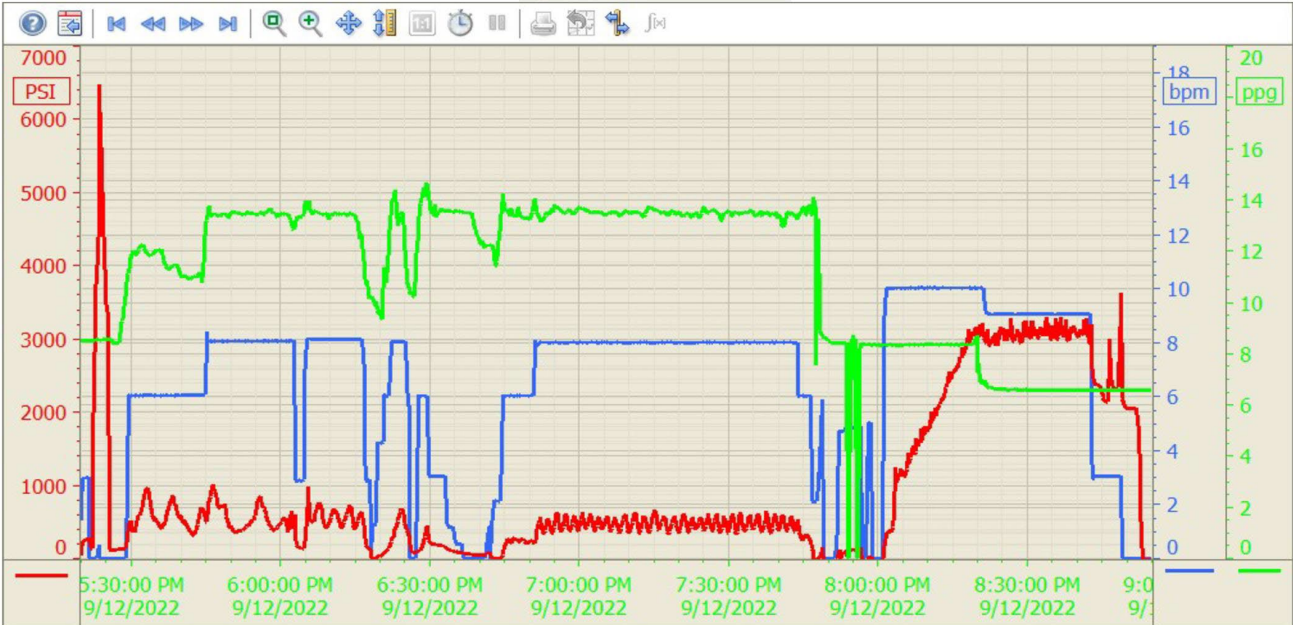
Pump Diagrams

Summary Trend

Bayswater 4



Lease: Ruby East



9/12/2022 10:01:00 P