



Bayswater Exploration & Production LLC

LONG STRING POST JOB REPORT

Ruby East #1 05-123-51737
S:7 T:7N R:65W Weld CO

CallSheet #: 83694
Proposal #: 63660



LONG STRING Post Job Report

Attention: Trevor Smith | (720) 335-9045 | trevor.smith@iptenergyservices.com
Bayswater Exploration & Production LLC
730 17TH STREET | DENVER, CO 80202

Dear Trevor Smith,

Thank you for the opportunity to provide cementing services on this well. American Cementing strives to achieve complete customer satisfaction. If you have any questions regarding the services or data provided, please contact American Cementing at any time.

Sincerely,

Jason Creel

Field Engineer Lead | (307) 256-0306 | jason.creel@americacementing.com

Field Office 1716 E Allison Rd, Cheyenne, WY 82007
Phone: (307) 414-0049

Job Details & Summary

Geometry

Type	Function	OD (in)	ID (in)	Weight (lb/ft)	Top (ft)	Bottom (ft)	Excess (%)
Casing	Outer	9.625	8.921	36	0	1532	0
Open Hole	Outer		8.5		1532	18334	5
Casing	Inner	5.5	4.778	20	0	18334	0

Equipment / People

Unit Type	Unit
Field Storage Silo	FSS-463
Field Storage Silo	FSS-465
Field Storage Silo	FSS-442
AS Cement Trailer Float	CTF-018
AS Cement Trailer Float	CTF-021
AS Cement Trailer Float	CTF-2944
AS Cement Trailer Float	CTF-9594
AS Cement Trailer Float	CTF-9054
Cement Trailer Float	CTF-408
Cement Trailer Float	CTF-002
Cement Utility Float	CUF-162
Cement Pump Float	CPF-182
Light Duty Vehicles	LDV-095

Timing

Event	Date/Time
Call Out	9/29/2022 03:00
Depart Facility	9/29/2022 06:30
On Location	9/29/2022 08:00
Rig Up Iron	9/29/2022 08:30
Job Started	9/29/2022 11:22
Job Completed	9/29/2022 15:11
Rig Down Iron	9/29/2022 15:40
Depart Location	9/29/2022 17:40

General Job Information

Metrics	Value
Well Fluid Density	10 lb/gal
Well Fluid Type	OBM
Rig Circulation Vol	1989 bbls
Rig Circulation Time	3 hours
Calculated Displacement	406 bbls
Actual Displacement	406 bbls
Total Spacer to Surface	80 bbls
Total CMT to Surface	36 bbls

Casing Equipment

Type	Description	Qty
CENTRALIZER,5-1/2"NON-WELD	Ridged	215

Job Details

Metrics	Value
Flare Prior to Job	No
Flare Prior to Job	0 units
Flare During Job	No
Flare During Job	0 units
Flare at End of Job	No
Flare at End of Job	0 units
Well Full Prior to Job	Yes
Well Fluid Density Into Well	10 lb/gal
Well Fluid Density Out of Well	10 lb/gal

Job Details (cont.)

Metrics	Value
BHCT	225 °F
BHST	225 °F

Water Analysis

Metrics	Value	Recommended
Water Source	Upright Rig Tank	
Temperature	60 °F	50-80 °F
pH Level	7	5.5-8.5
Chlorides	0 mg/L	0-3000 mg/L
Total Alkalinity	140	0-1000
Total Hardness	250 mg/L	0-500 mg/L
Carbonates	40 mg/L	0-100 mg/L
Sulfates	<250 mg/L	0-1500 mg/L
Potassium	0 mg/L	0-3000 mg/L
Iron	0 mg/L	0-300 mg/L

Circulation

Lost Circulation Experienced
No

Job Execution Information

Fluid	Product	Function	Density (lb/gal)	Yield (ft ³ /sk)	Water Rq. (gal/sk)	Water Rq. (gal/bbl)	Volume (sks)	Volume (bbl)	Designed Top (ft)
1	EZ Spacer II	Spacer	12.00					40.00	0
2	EZ Spacer II	Spacer	11.50					20.00	0
3	EZ Spacer II	Spacer	11.00					20.00	0
4	Lead	Lead	13.50	1.55	7.81		1165.00	321.72	0
5	Tail	Tail	13.50	1.50	7.57		1770.00	474.04	7300
6	Retarded Water + Chems	Displacement	8.37			41.43		10.00	17868
7	Water + Chems	DisplacementFinal	8.37			41.53		396.00	0

Job Fluid Details

Fluid	Type	Fluid	Product	Function	Conc.	Uom
1	Spacer	EZ Spacer II	WEIGHTING ADDITIVE, W-11	Heavyweight	242.31	lb/bbl
1	Spacer	EZ Spacer II	GW-86	Viscosifier	1.20	lb/bbl
1	Spacer	EZ Spacer II	R-31	Retarder	0.50	lb/bbl
1	Spacer	EZ Spacer II	R-7C	Retarder	2.00	lb/bbl
1	Spacer	EZ Spacer II	Surfactant, S-801c	Surfactant	1.00	gal/bbl
2	Spacer	EZ Spacer II	WEIGHTING ADDITIVE, W-11	Heavyweight	242.31	lb/bbl
2	Spacer	EZ Spacer II	GW-86	Viscosifier	1.20	lb/bbl
2	Spacer	EZ Spacer II	R-31	Retarder	0.50	lb/bbl
2	Spacer	EZ Spacer II	R-7C	Retarder	2.00	lb/bbl
2	Spacer	EZ Spacer II	Surfactant, S-801c	Surfactant	1.00	gal/bbl
3	Spacer	EZ Spacer II	WEIGHTING ADDITIVE, W-11	Heavyweight	242.31	lb/bbl
3	Spacer	EZ Spacer II	GW-86	Viscosifier	1.20	lb/bbl
3	Spacer	EZ Spacer II	R-31	Retarder	0.50	lb/bbl
3	Spacer	EZ Spacer II	R-7C	Retarder	2.00	lb/bbl
3	Spacer	EZ Spacer II	Surfactant, S-801c	Surfactant	1.00	gal/bbl
4	Lead	Lead	CLASS G	Cement	50.00	%
4	Lead	Lead	FLY ASH (ROCKIES)	Extender	50.00	%
4	Lead	Lead	BENTONITE	Viscosifier	4.00	%BWOB
4	Lead	Lead	EC-2	BondEnhancer	3.00	%BWOB
4	Lead	Lead	FL-24	FluidLoss	0.20	%BWOB
4	Lead	Lead	FL-66	FluidLoss	0.30	%BWOB



Fluid	Type	Fluid	Product	Function	Conc.	Uom
4	Lead	Lead	FP-24	Defoamer	0.30	%BWOB
4	Lead	Lead	GW-86	Viscosifier	0.10	%BWOB
4	Lead	Lead	SR-20	Retarder	0.05	%BWOB
4	Lead	Lead	STATIC FREE	Other	0.01	lb/sk
5	Tail	Tail	CLASS G	Cement	50.00	%
5	Tail	Tail	FLY ASH (ROCKIES)	Extender	50.00	%
5	Tail	Tail	BENTONITE	Viscosifier	4.00	%BWOB
5	Tail	Tail	FL-24	FluidLoss	0.20	%BWOB
5	Tail	Tail	FP-24	Defoamer	0.30	%BWOB
5	Tail	Tail	GW-86	Viscosifier	0.10	%BWOB
5	Tail	Tail	SR-20	Retarder	0.13	%BWOB
5	Tail	Tail	STATIC FREE	Other	0.01	lb/sk
6	Displacement	Retarded Water + Chems	BIOCIDE,BIOC11139W	Biocide	0.01	gal/bbl
6	Displacement	Retarded Water + Chems	CI-27	Other	0.21	gal/bbl
6	Displacement	Retarded Water + Chems	OXYGEN SCAVENGER, OS-30	Other	0.17	gal/bbl
6	Displacement	Retarded Water + Chems	ResCare CS-2	ClayProtection	0.08	gal/bbl
6	Displacement	Retarded Water + Chems	SR-61L	Retarder	0.10	gal/bbl
7	DisplacementFinal	Water + Chems	BIOCIDE,BIOC11139W	Biocide	0.01	gal/bbl
7	DisplacementFinal	Water + Chems	CI-27	Other	0.21	gal/bbl
7	DisplacementFinal	Water + Chems	OXYGEN SCAVENGER, OS-30	Other	0.17	gal/bbl
7	DisplacementFinal	Water + Chems	ResCare CS-2	ClayProtection	0.08	gal/bbl

Job Logs

Line	Event	Date (MM/DD/YY)	Time (HH:MM)	Density (lb/gal)	Pump Rate (bpm)	Pump Volume (bbls)	Pipe Pressure (psi)	Comment
1	Call Out	9/29/2022	03:00					ACC gets called out. Requested t/l 09:30
2	Depart Facility	9/29/2022	06:30					ACC departs facility
3	Arrived To Location	9/29/2022	08:00					ACC arrives to location. Rig is currently circulating
4	Rig Up	9/29/2022	08:30					ACC spots in units and rigs up equipment
5	Safety Meeting	9/29/2022	10:58					ACC had a pre-job safety meeting with rig hands and OSR. Went over job procedure
6	Pressure Test	9/29/2022	11:22				7300	Pressure test pump/lines to 7300PSI
7	Pump EZ-II Spacer	9/29/2022	11:33	12	4		400	Start mixing and pumping EZ-II Spacer @ 12PPG @ 4BPM w/ 400PSI
8	Pump EZ-II Spacer	9/29/2022	11:40	11.5	4	40	350	At 40BBLS away into EZ-II Spacer, dropped to 11.5PPG @ 4BPM w/ 350PSI
9	Pump EZ-II Spacer	9/29/2022	11:46	11	4	60	300	At 60BBLS away into EZ-II Spacer, dropped to 11PPG @ 4BPM w/ 300PSI
10	Pump Lead CMT	9/29/2022	11:52	13.5	8	321.6	600	Pumped 321.6BBLS of Lead CMT, 13.5PPG @ 8BPM w/ 600PSI (1145SKS 1.55YLD 7.8G/SK)
11	Pump Tail CMT	9/29/2022	12:47	13.5	8		575	Pumped 400BBLS of Tail CMT, 13.5PPG @ 8BPM w/ 600PSI (1760SKS 1.50YLD 7.6G/SK)
12	Slow Rate	9/29/2022	13:29	13.5	7	400	400	At 400BBLS away into Tail CMT slowed rate to 7BP w/ 400PSI
13	Shut Down	9/29/2022	13:47					Shut down pumping CMT
14	Wash Pump/Lines	9/29/2022	13:48					Washed pump/lines to the open top
15	Drop Bottom Plug	9/29/2022	13:49					Dropped bottom plug
16	Pump 5 BBLs SR-61L	9/29/2022	13:55	8.33	4	5	200	Pumped 5BBLS w/ SR-61L for wet shoe @ 4BPM w/ 200PSI
17	Drop Top Plug	9/29/2022	13:56					Shut down, dropped top plug
18	Pump Disp	9/29/2022	13:58	8.33	10		1550	Came back online with disp @ 10BPM w/ 15500PSI
19	Slow Rate	9/29/2022	14:20	8.33	8	160	3200	Slowed down rate 160BBLS away into disp @ 8BPM w/ 3200PSI
20	Slow Rate	9/29/2022	14:25	8.33	6	190	3200	Slowed down rate 190BBLS away into disp @ 6BPM w/ 3200PSI
21	Spacer To Surface	9/29/2022	14:39	8.33	6	290	3200	At 290BBLS away into disp, got EZ-II Spacer back to surface @ 6BPM w/ 3200PSI
22	CMT To Surface	9/29/2022	14:56	8.33	6	370	3200	CMT to surface 370BBLS away into disp @ 6BPM w/ 3200PSI
23	Slow Rate	9/29/2022	15:00	8.33	3	395	2700	At 395BBLS away into disp, slowed rate to 3BPM w/ 2700PSI
24	Burst Bottom Plug	9/29/2022	15:03	8.33	3	401	2700	At 401BBLS away into disp, burst bottom plug @ 3BPM w/ 3400PSI
25	Burst Top Plug	9/29/2022	15:06	8.33	3	406	2700	At 406BBLS away into disp, burst top plug @ 3BPM w/ 4100PSI
26	Shut Down	9/29/2022	15:07					Shut down pumping disp
27	Check Floats	9/29/2022	15:11					Checked floats, 3 BBLs back
28	Rig Down	9/29/2022	15:40					ACC rigged down equipment
29	Depart Location	9/29/2022	17:40					ACC departed location
30	Other	9/29/2022	17:41			36		Total CMT back to surface, 36 BBLs

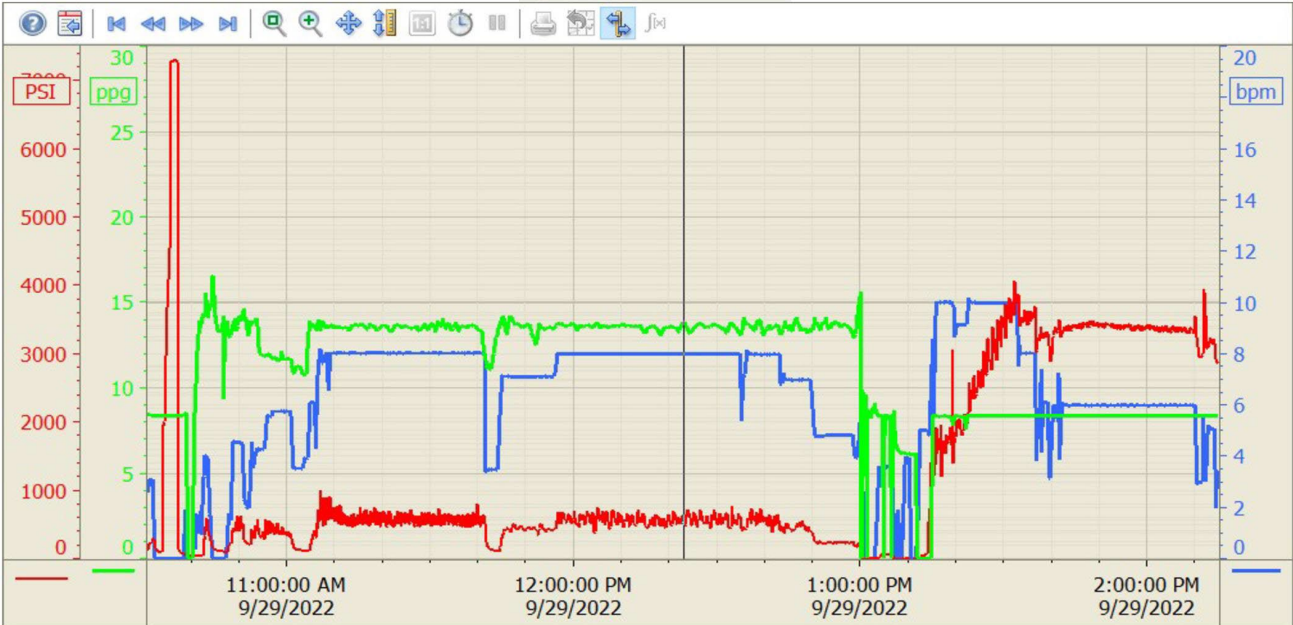
Pump Diagrams

Summary Trend

Bayswater 1



Lease: Ruby East



9/29/2022 3:20:56 PM