

**KT Resources LLC
WRD Federal 19-31
Location ID: 316279**



As signs are replaced additional information is required



Lack of stabilization on lease road

KT Resources LLC
WRD Federal 19-31
Location ID: 316279



Gas meter calibration display

Mar 19, 2024 at 8:47:35 AM

Ful. 5981' Rio Blanco

IMPACT ANALYTICAL
SYSTEMS INC.
365 SOUTH MAIN
BRIGHTON, CO 80601
303-637-0150 www.impactanalytical.com

Meter S/N
15827235
C-0127535

Station Name WRD Federal 19-31
Station No. 120275563 Producer 31 Op.
Sec 19 Township 2N Range 96W
Diff 250" Temp Range 0-150° Tube Size 2.068
Static 200# Absolute 11.84 psig

	Date	Orifice Plate Size	Meter Test Date	Sample Date
GM	3-7-18	1.125 ✓	3-7-18	3-7-18
KB	8-22-18	1.125	8-22-18	8-22-18
KB	2-27-19	1.125	2-27-19	2-10-19
CW .8378	7-10-19	1.125	7-10-19	9-10-19
	2-7-22	1.125	2-7-22	

KB

Gas meter calibration out of date

**KT Resources LLC
WRD Federal 19-31
Location ID: 316279**



As signs are replaced additional information is required



Oily waste and stained soil

**KT Resources LLC
WRD Federal 19-31
Location ID: 316279**

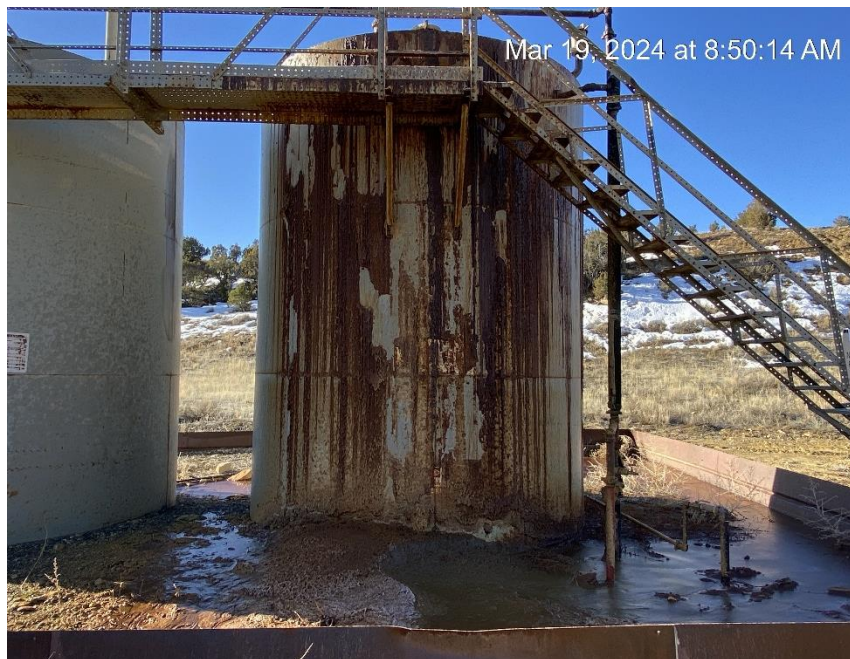


Equipment out of service



Oily waste and stained soil

**KT Resources LLC
WRD Federal 19-31
Location ID: 316279**



Oily waste and stained soil



Oily waste and stained soil

**KT Resources LLC
WRD Federal 19-31
Location ID: 316279**



Oily waste and stained soil



Oily waste and stained soil

**KT Resources LLC
WRD Federal 19-31
Location ID: 316279**



Erosion and sediment migration



Erosion and sediment migration

**KT Resources LLC
WRD Federal 19-31
Location ID: 316279**



Erosion and sediment migration



Erosion and sediment migration

**KT Resources LLC
WRD Federal 19-31
Location ID: 316279**



Location from Northwest corner



Location from Southwest corner

**KT Resources LLC
WRD Federal 19-31
Location ID: 316279**



Location from Southeast corner



Location from Northeast corner