

1:240					
<div> <div>LWD</div> <div>Stand Alone WPR</div> </div>					
MD Log					
Country : United States Field : Wattenberg Location : 39.667247°N : 104.603567°W Well : Chico 4-65 25-26 4BH Company : Crestone Peak Rig : Patterson 345			Company : Crestone Peak Rig : Patterson 345 Well : Chico 4-65 25-26 4BH Field : Wattenberg County/Parish : Arapahoe State/Province : Colorado Country : United States Well ID : 05-005-07547		
LOCATION			Latitude : 39.667247°N Longitude : 104.603567°W Chico 4-65 25-26 4BH Sect: 30 Twp: 4S Range: 64W		
Permanent Datum : MSL Log Measured From : 3316			Elevation: NAD 1983 Elev. KB : 5758 DF : 5793 GLWD : 25		
Depth Logged : 3316 Date Logged : 12-21-2023 Total Depth MD : 7429.00 Spud Date :			to : 7429 to : 12-23-2023 TVD : 7241.3		
Run			<div> <div> <div>FIELD PRINT</div> <div>Job Number: CHICO 4-65 25-26 4BH</div> </div> </div>		
Borehole Record (MD) Size From To			Borehole Record (MD) Size From To		
2 8.5 3316 7429					
			Casing Record (MD) Size Weight From To		
			13.5 0 3316		

DISCLAIMER					
Altitude Energy does not guarantee the accuracy or correctness of interpretations in or from this log. Since all interpretations are opinions based on measurements Altitude Energy shall under no circumstance be responsible for consequential damages or and other loss, cost or expense incurred or sustained in connection with the use of such interpretations.					
LOGGING SUMMARY					
Log Run	1				
Bit Run	1				
Hole Size (in)	8.50				
Sensor Suite	Stand Alone WPR				
Measured Depth					
In Hole From	10736				
In Hole To	18192				
Log From	3316.00				
Log To	7429.00				
Date/Time					
In Hole Date	2023-12-20				
In Hole Time	19:22:31				
Out Hole Date	2023-12-24				
Out Hole Time	15:10:00				
Begin Log Date	2023-12-20				
Begin Log Time	19:22:30				
End Log Date	2023-12-24				
End Log Time	15:09:59				

LWD Engineer	Steven Varhalla				
Oil Company Rep	Josh				
DRILLING FLUID SUMMARY					
Mud Type	OBM				
Density (lb/gal)	9.00				
Funnel Viscosity	51				
Plastic Viscosity	12				
Chlorides	0				
Oil/Water Ratio	77.9/22.1				
Maximum Circ Temp (F)	228.2				

Resistivity Phase Diff. BHC 2 MHz Short
RPCECSHM

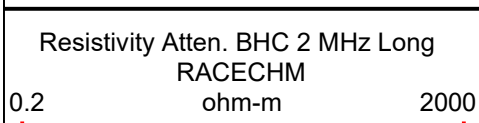
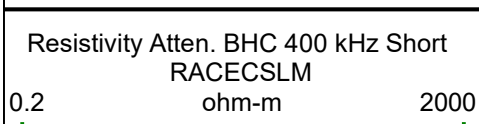
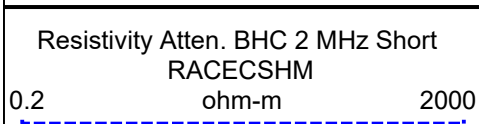
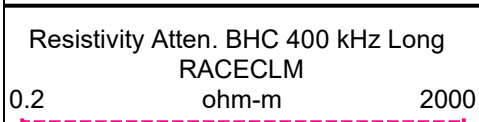
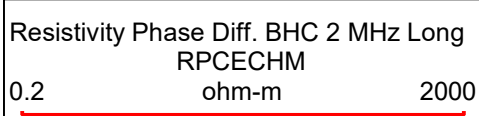
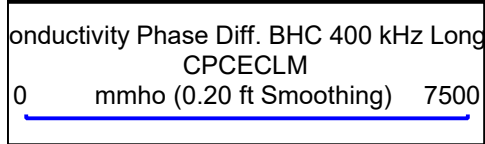
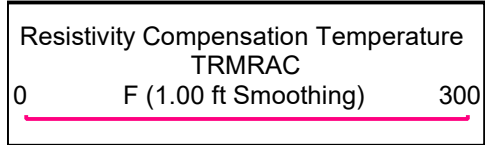
0.2 ohm-m 2000

Resistivity Phase Diff. BHC 400 kHz Long
RPCECLM

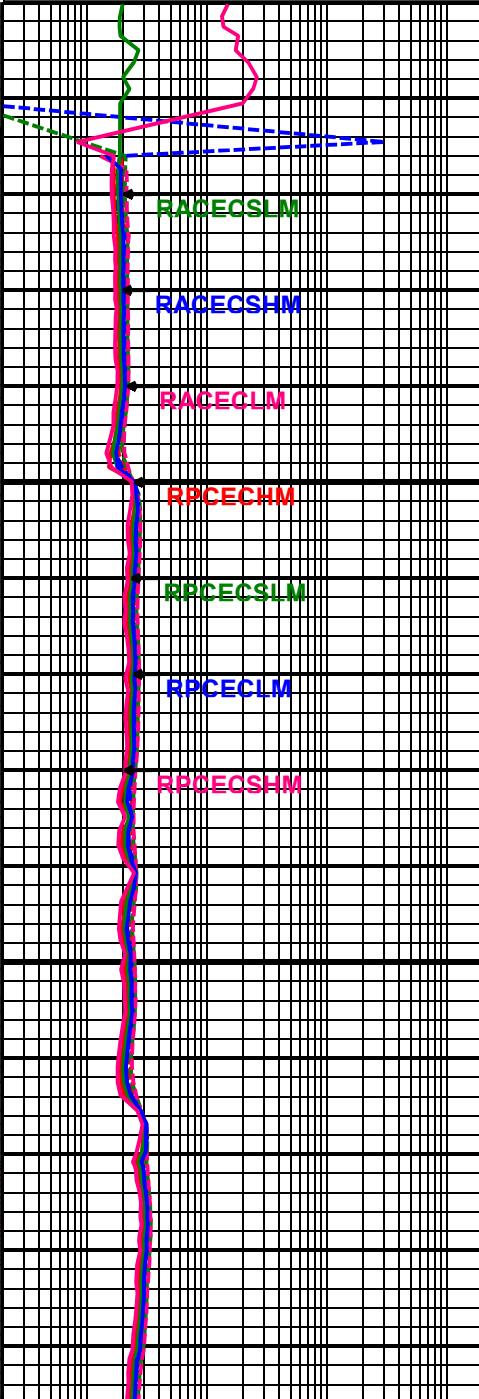
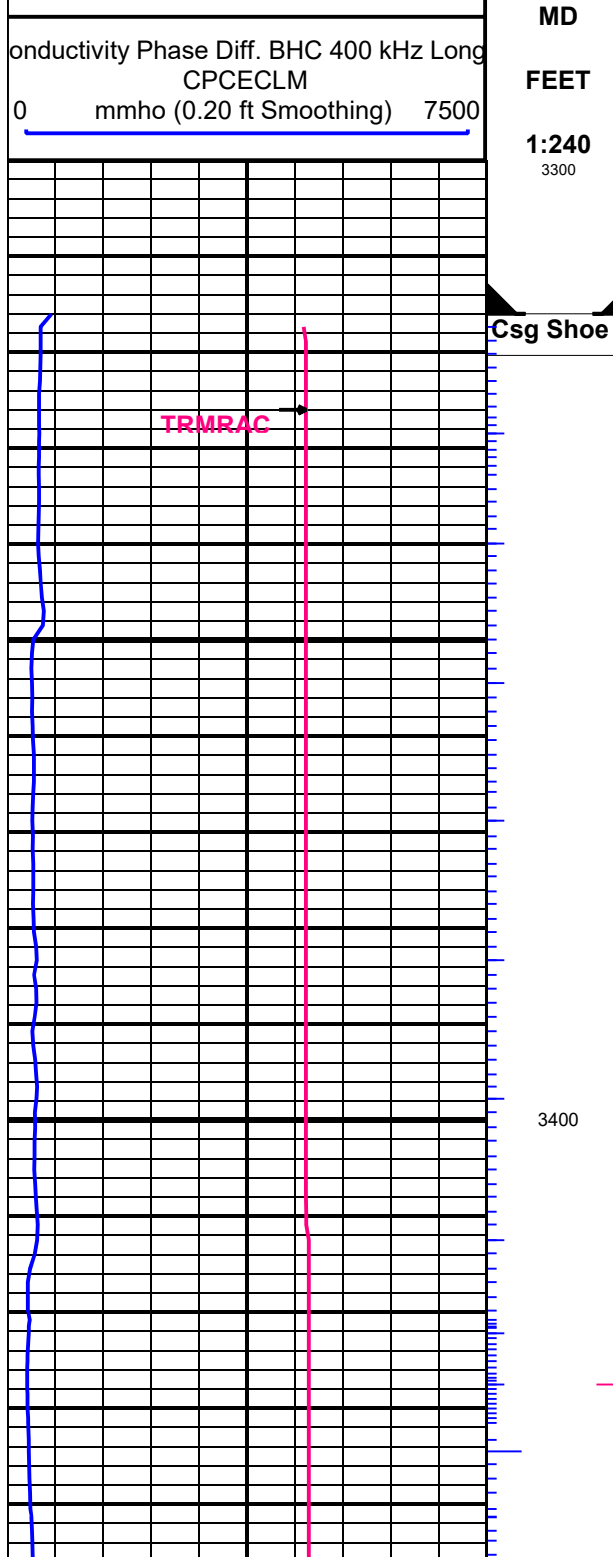
0.2 ohm-m 2000

Resistivity Phase Diff. BHC 400 kHz Short
RPCECSLM

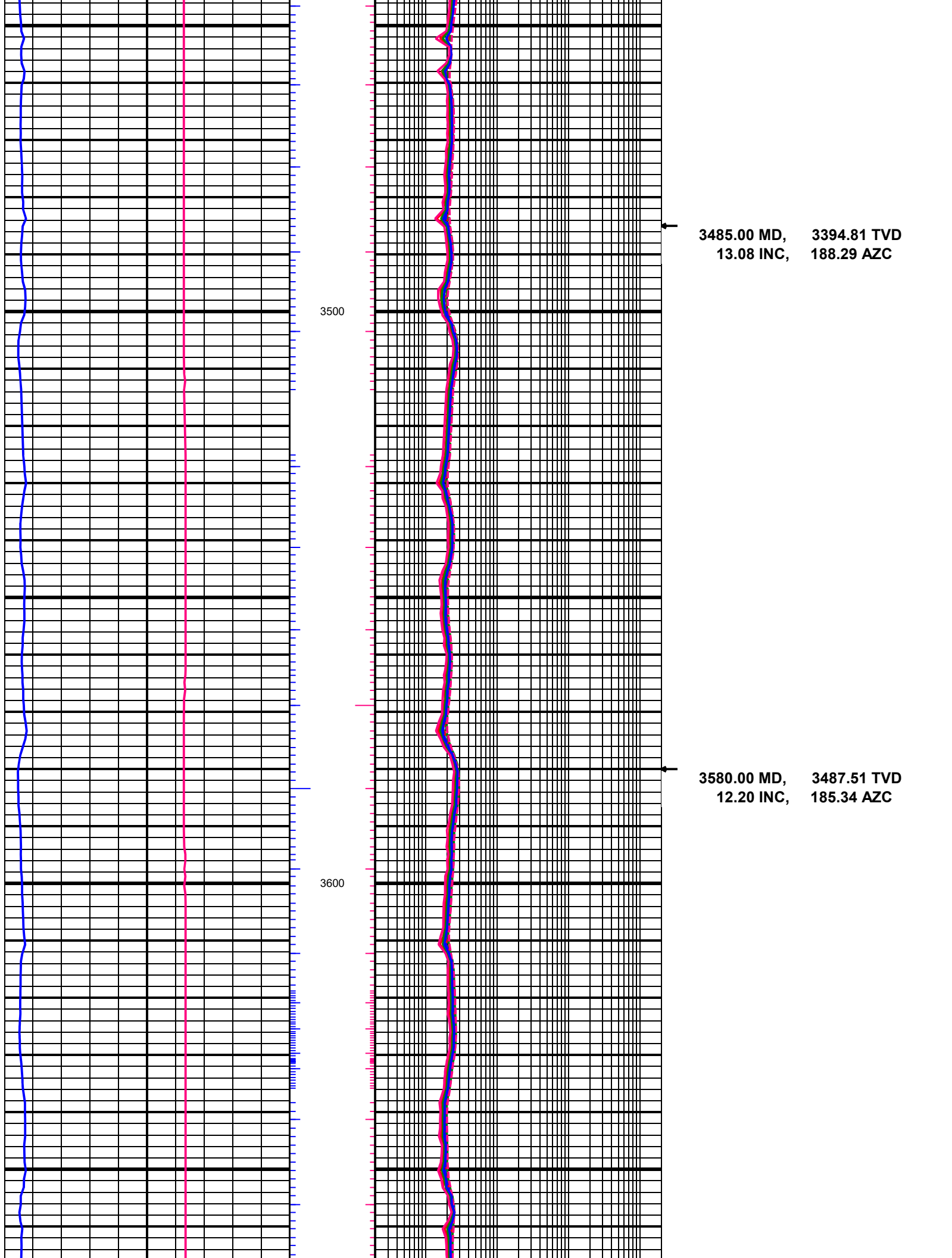
0.2 ohm-m 2000

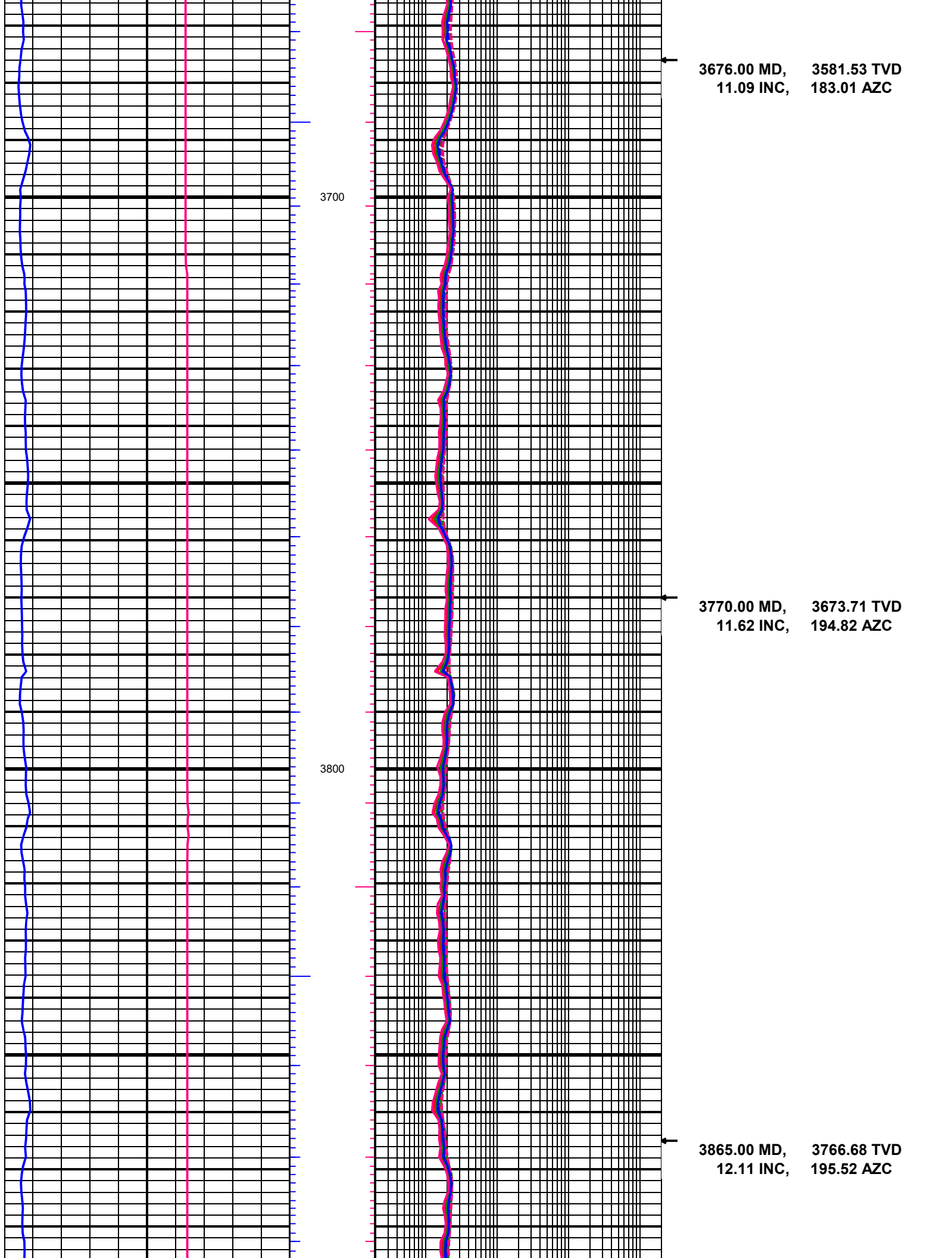


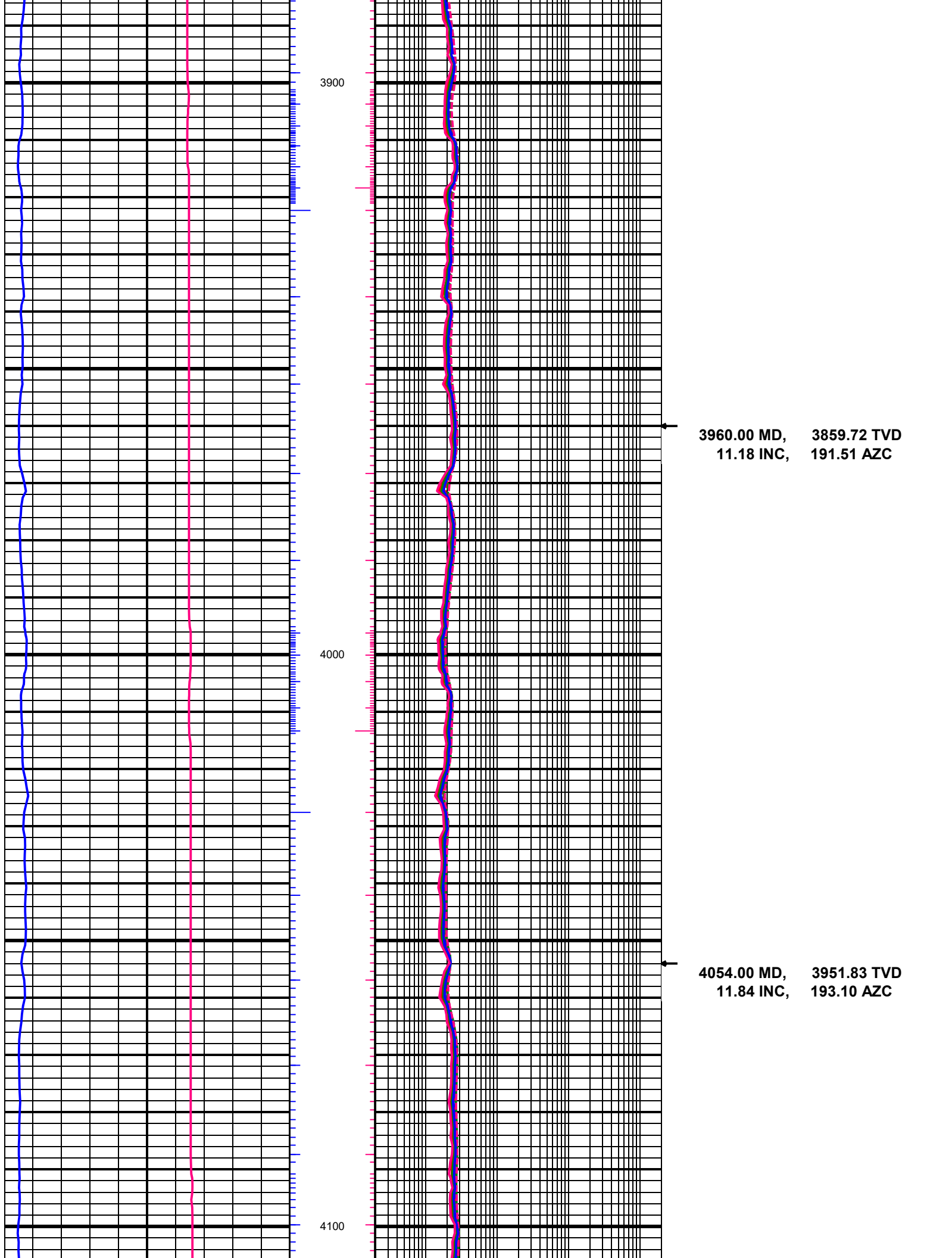
Directional Surveys

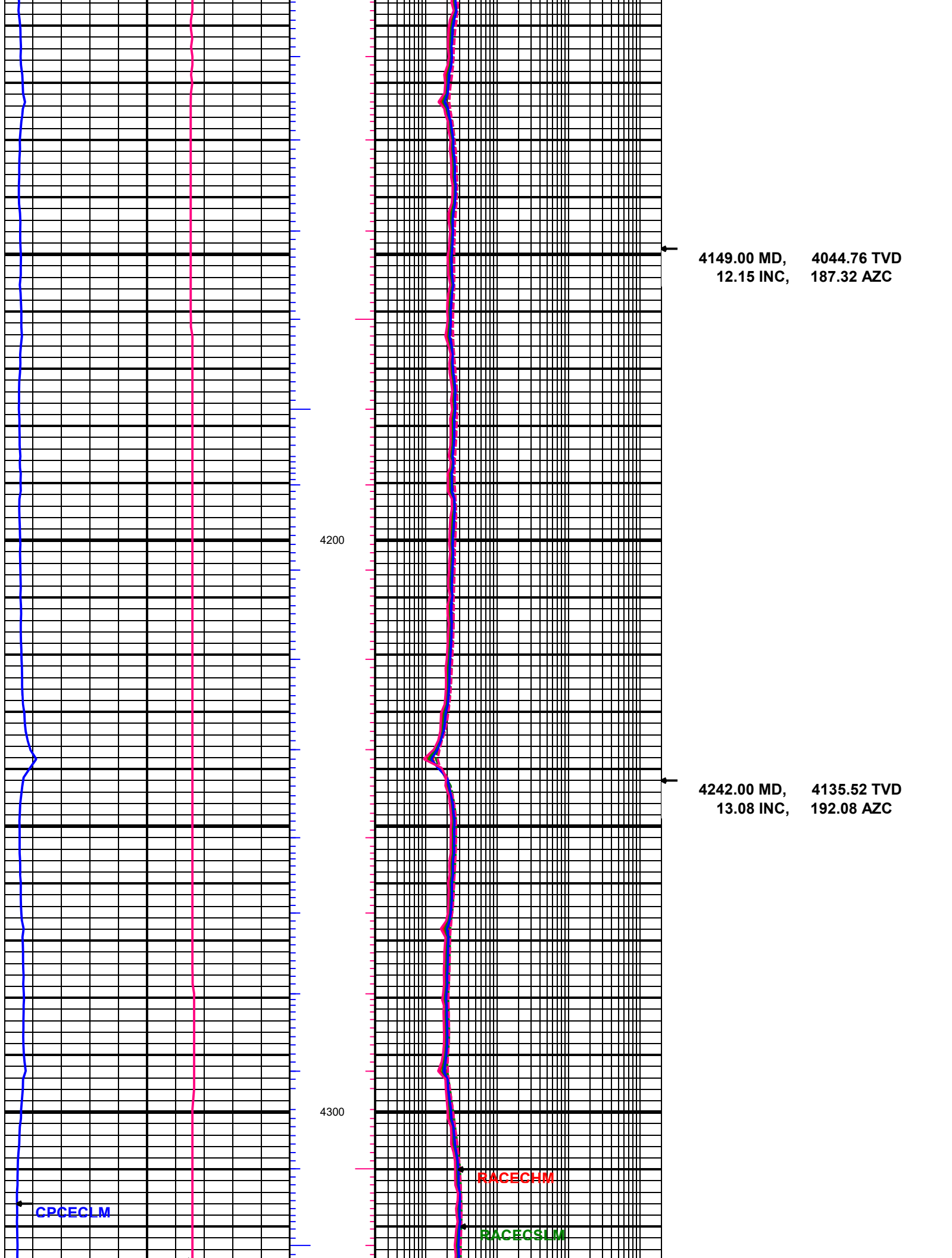


3390.00 MD, 3302.06 TVD
11.93 INC, 178.47 AZC









TRMRAC

RACECSHM

RACECLM

RPCECHM

RPCECSLM

RPCECLM

RPCECSHM

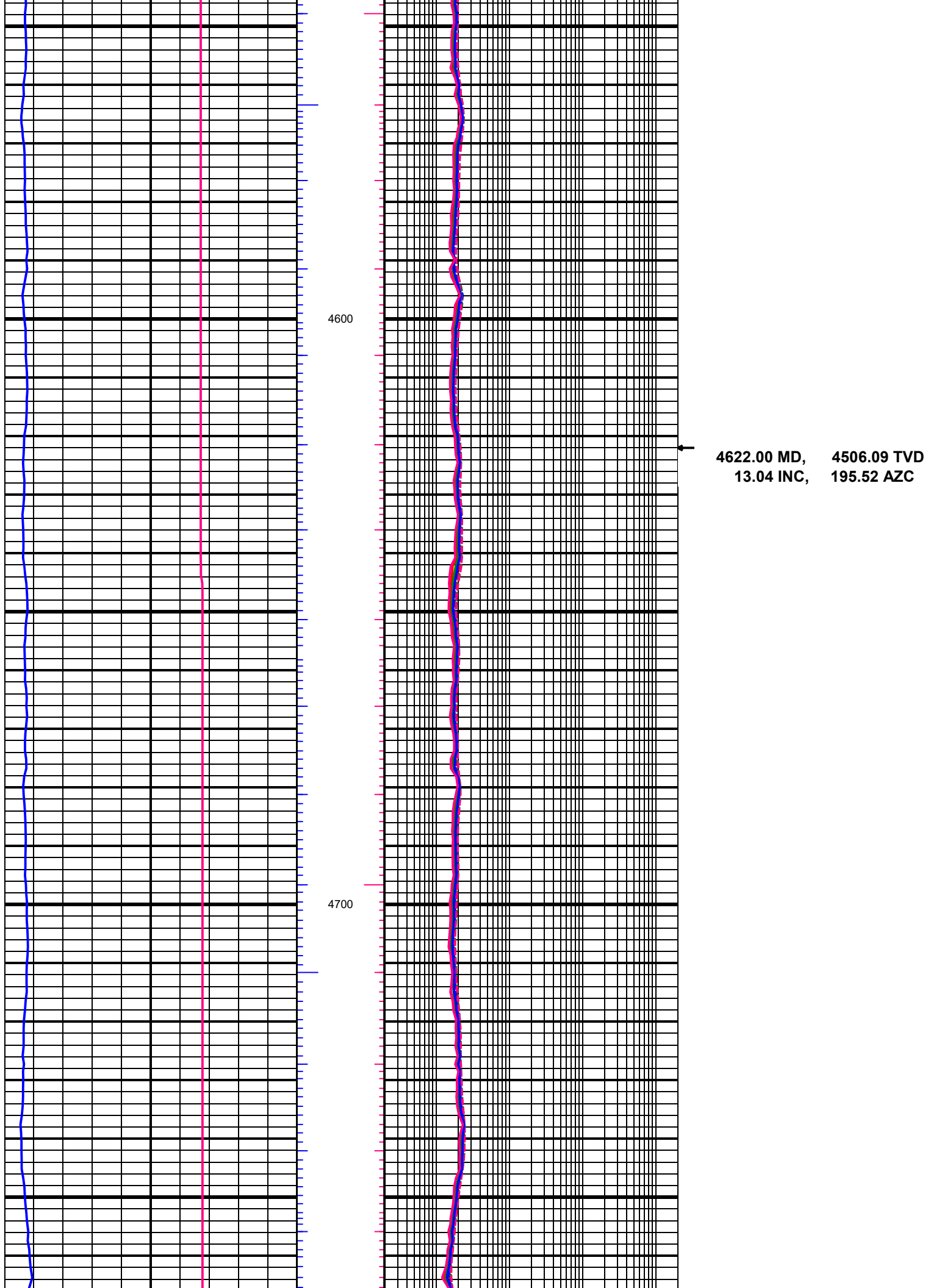
4400

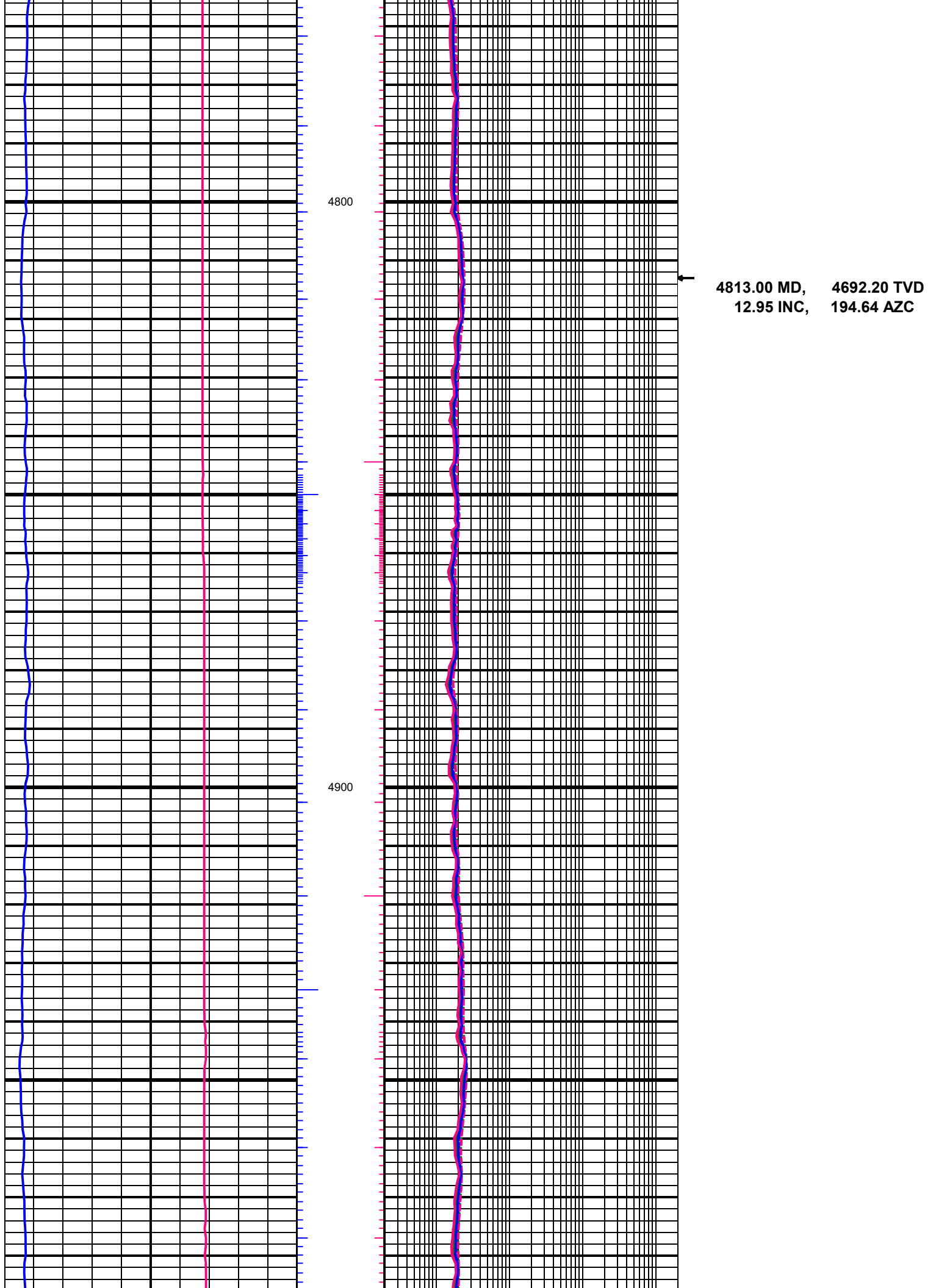
4500

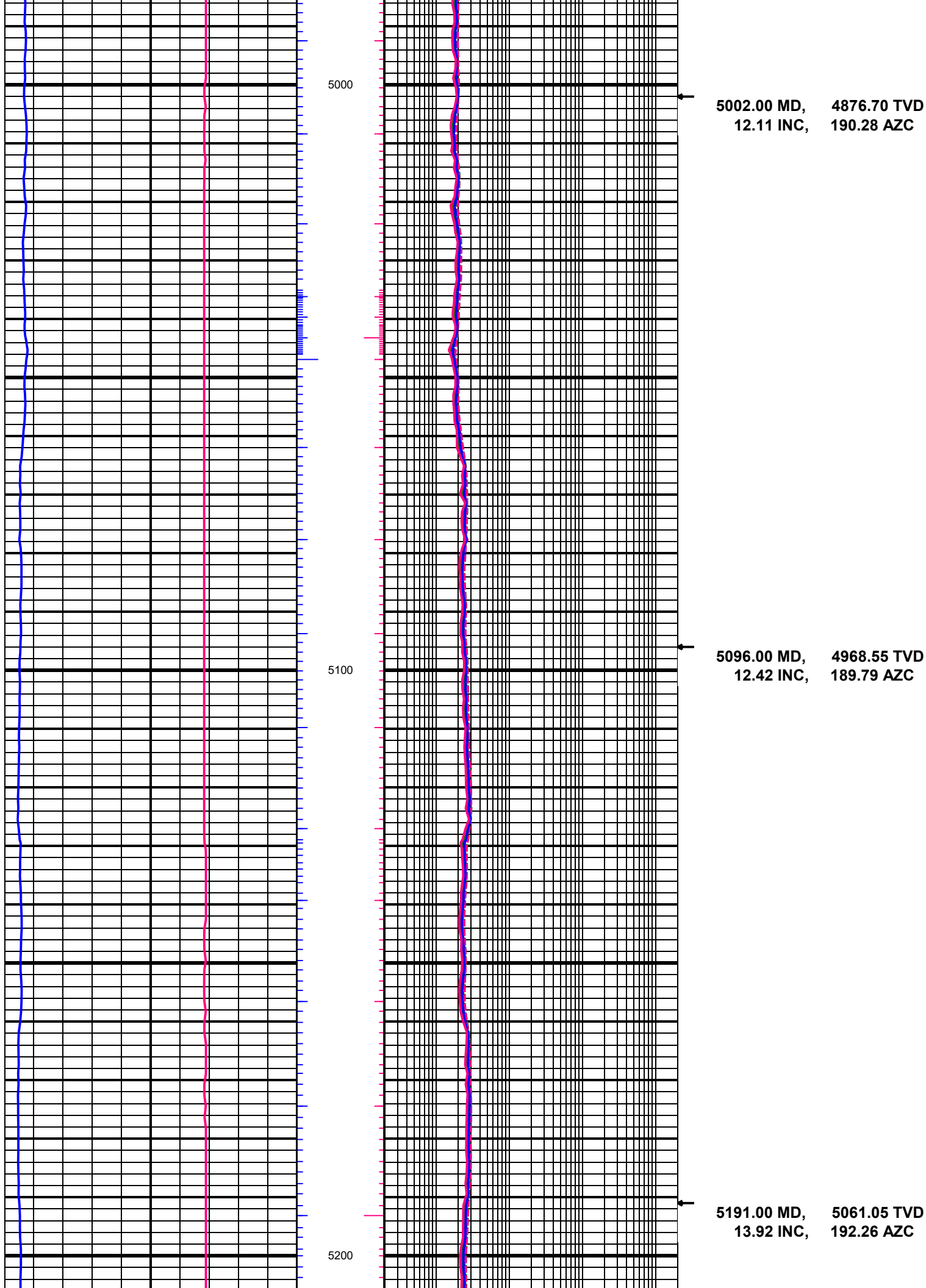
4338.00 MD, 4229.23 TVD
11.98 INC, 189.79 AZC

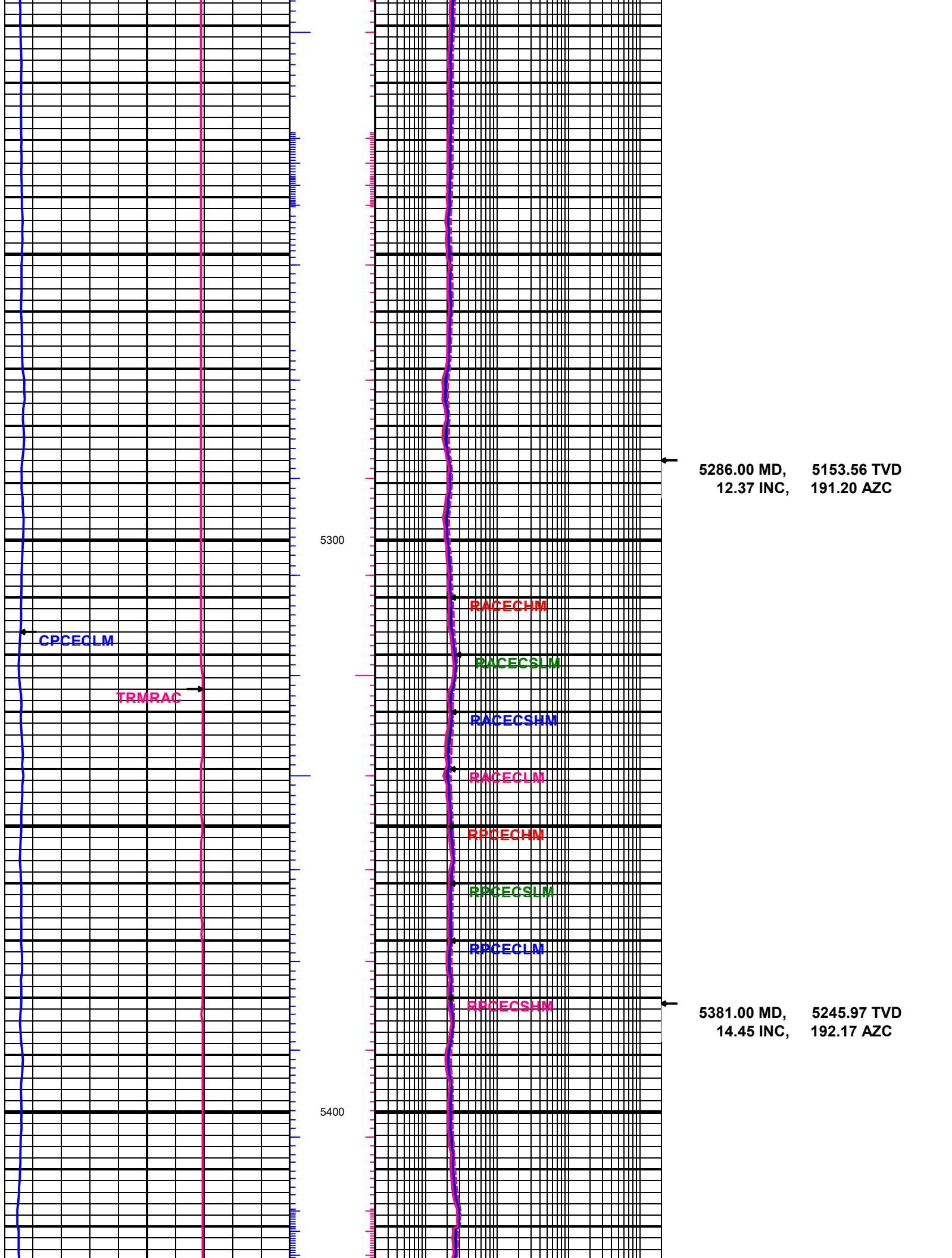
4432.00 MD, 4320.87 TVD
13.74 INC, 190.54 AZC

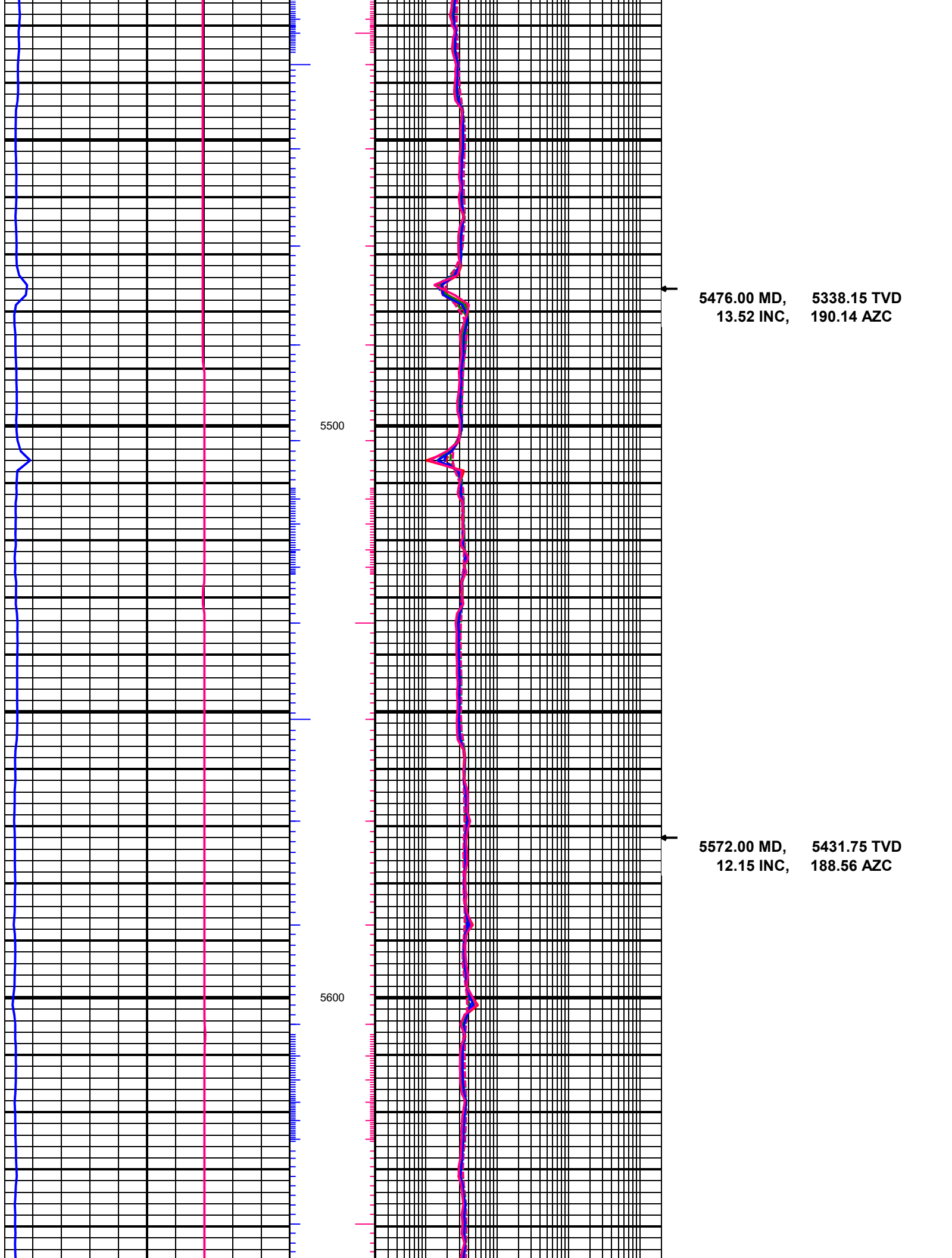
4527.00 MD, 4413.41 TVD
12.37 INC, 188.60 AZC

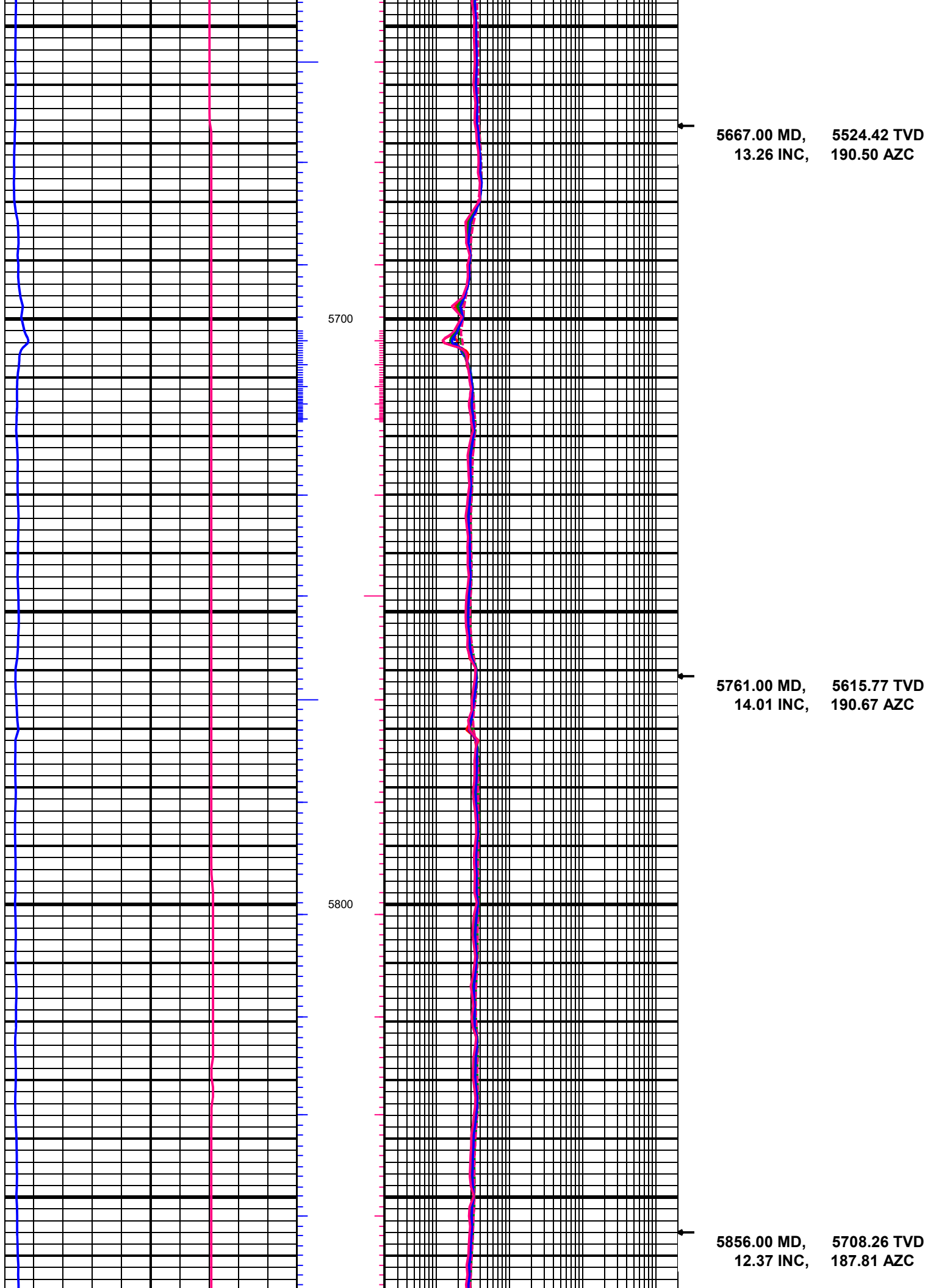


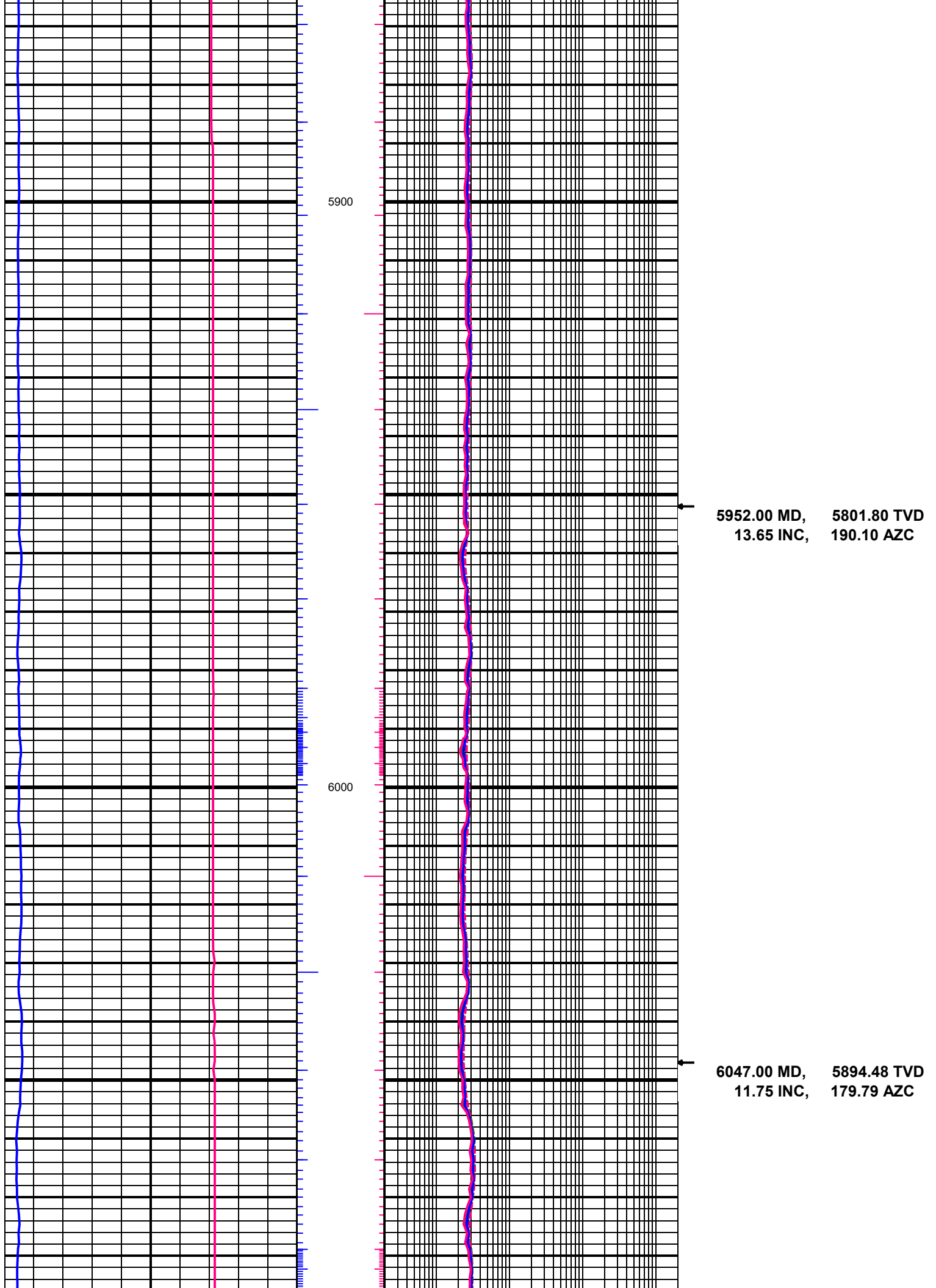


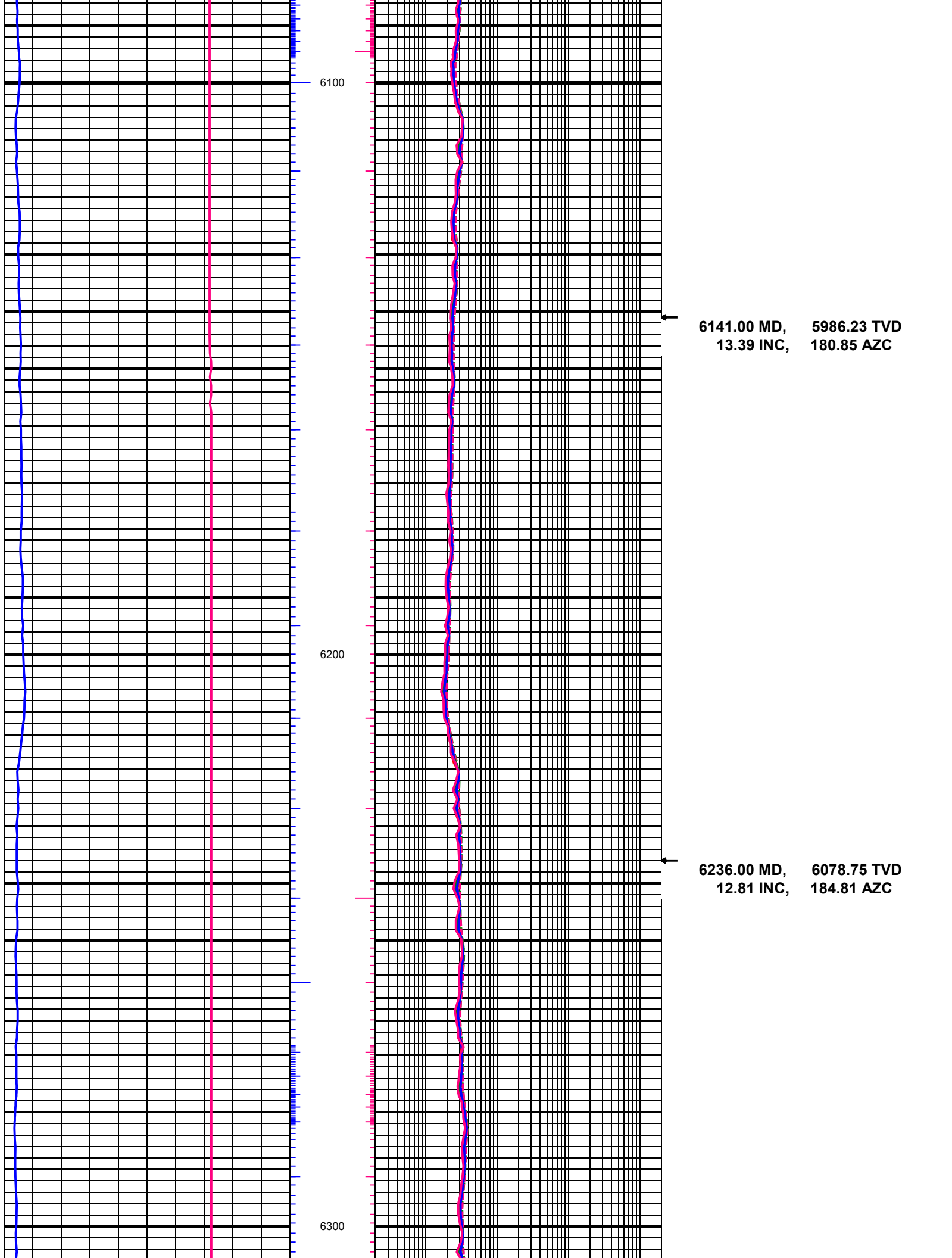


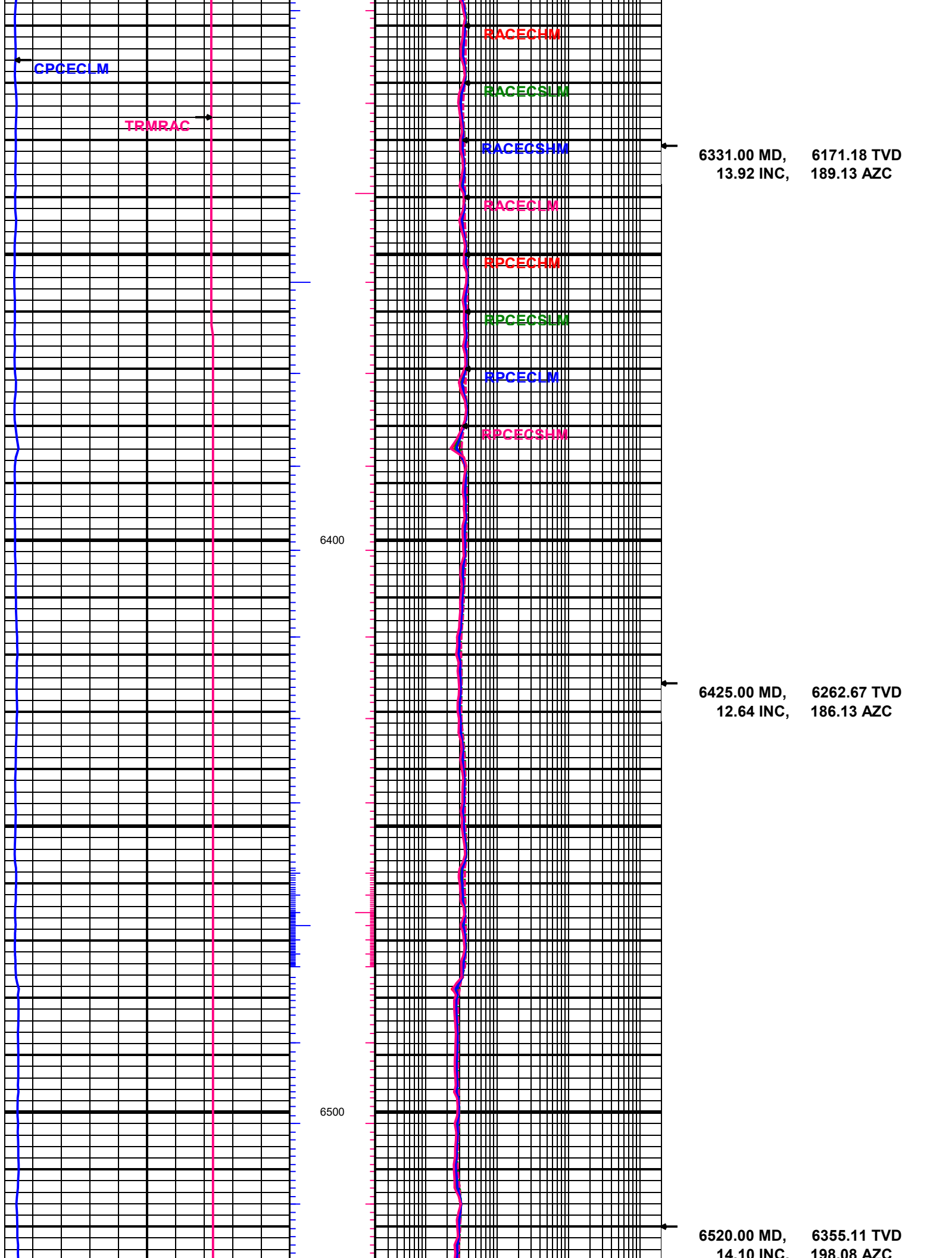


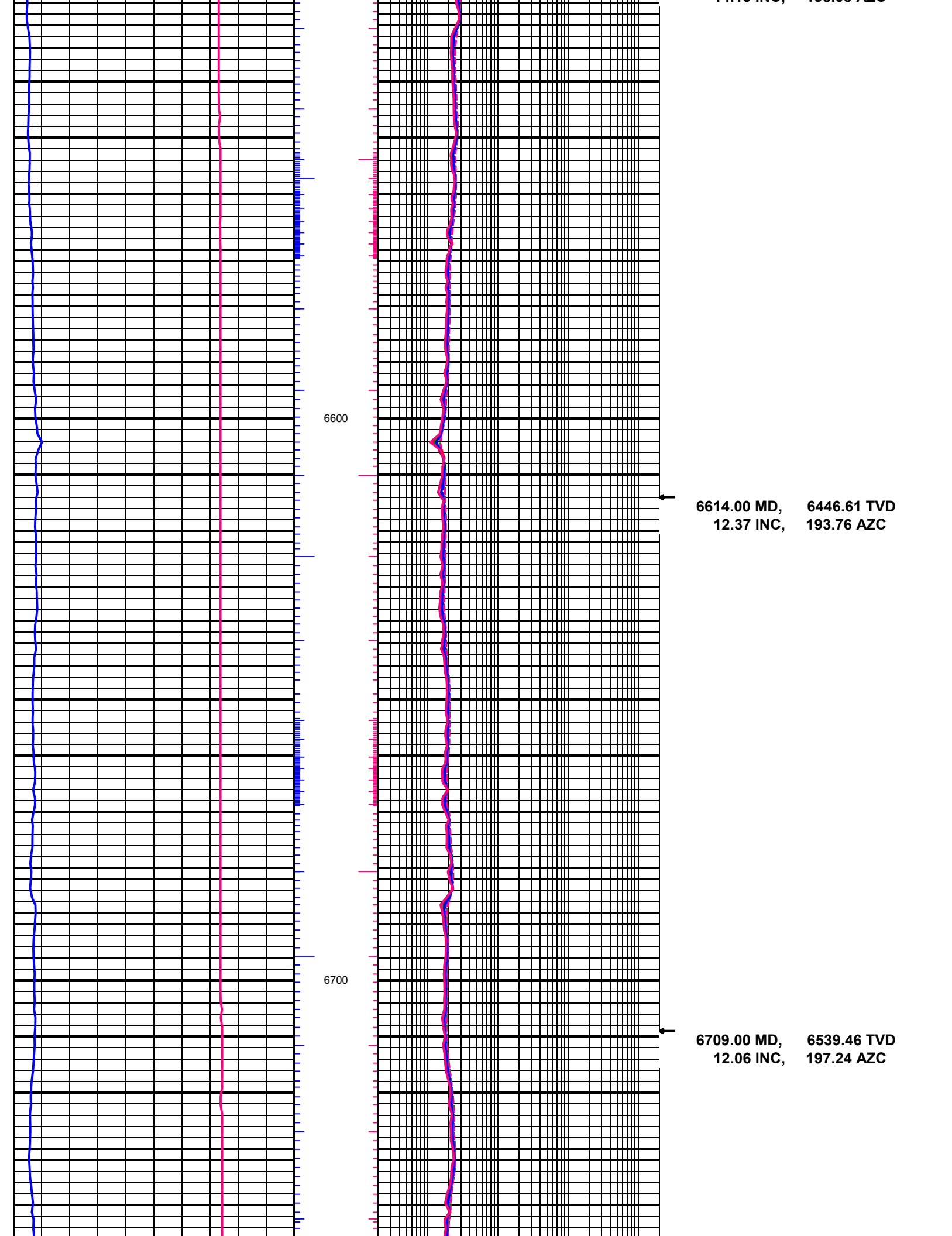


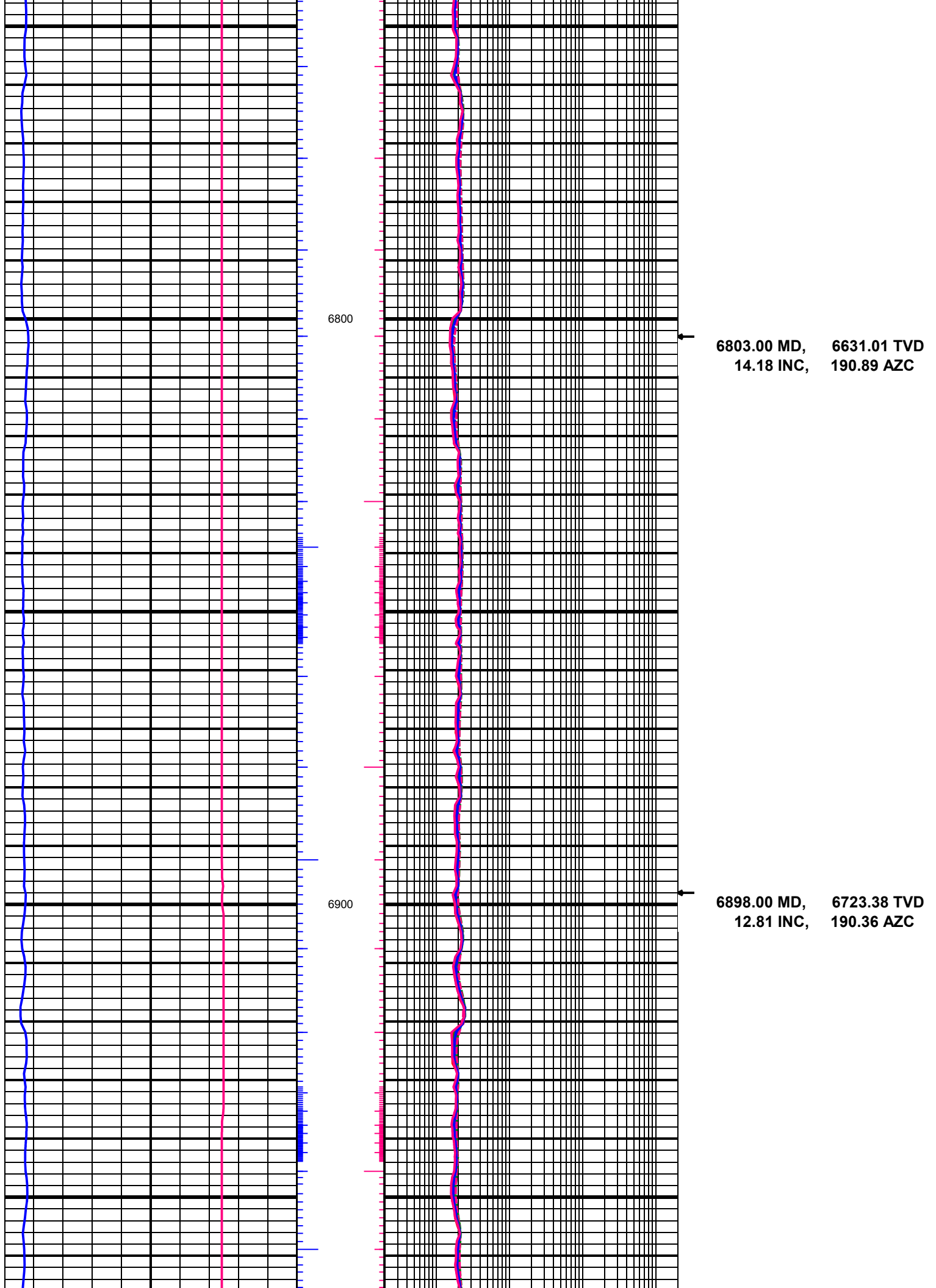


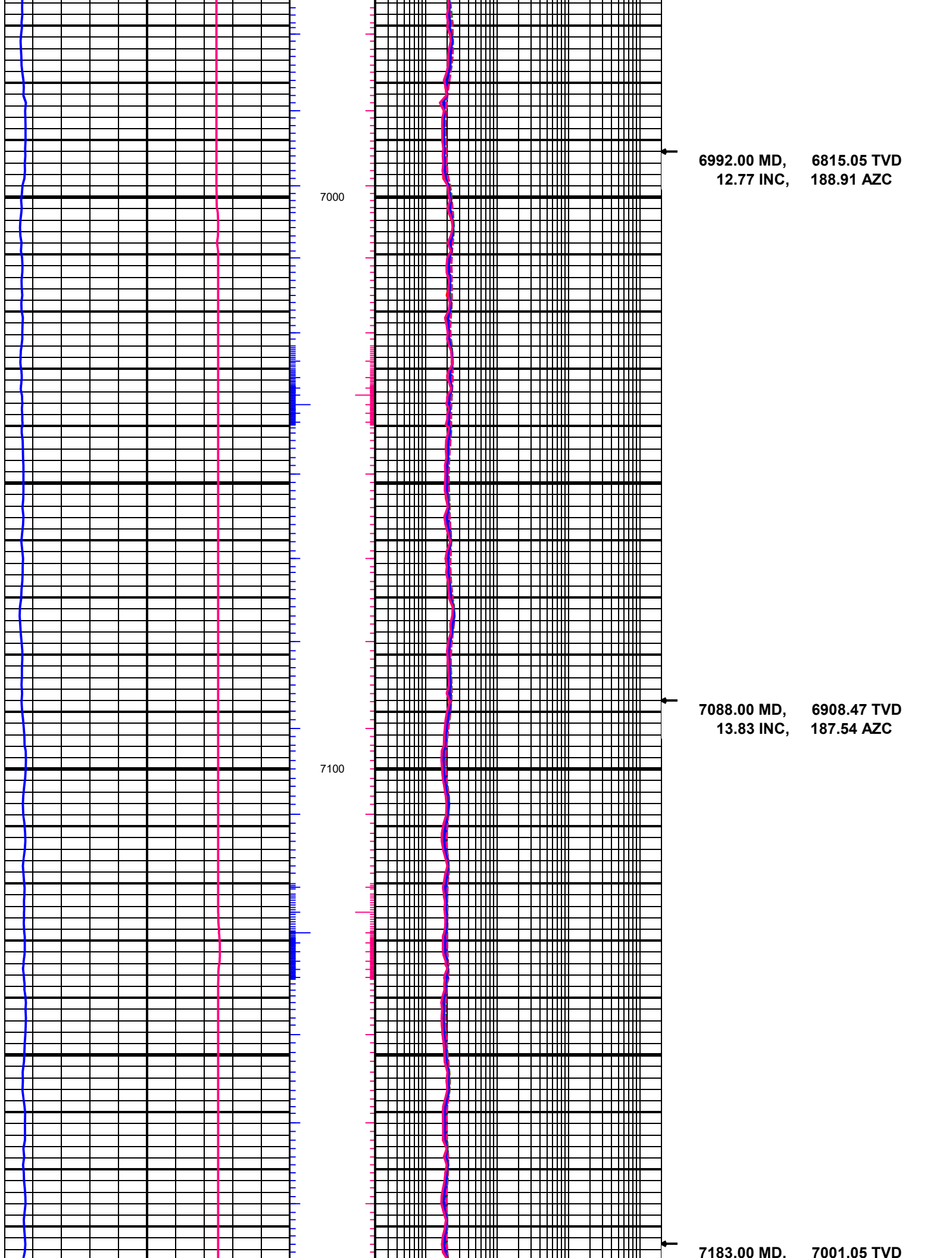




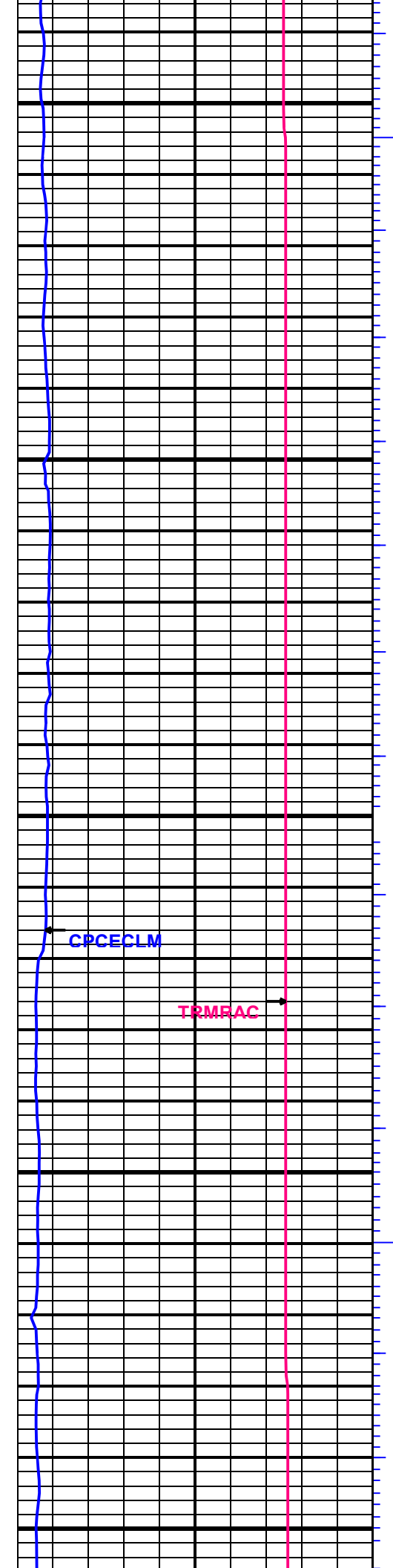








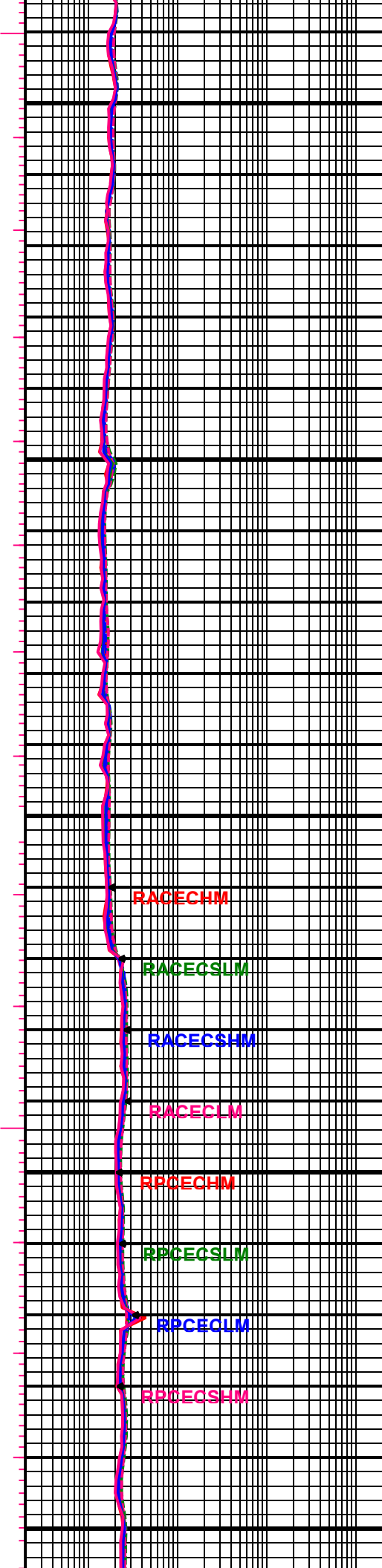
12.11 INC, 186.53 AZC



7200

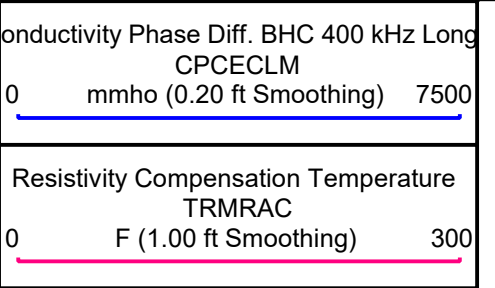
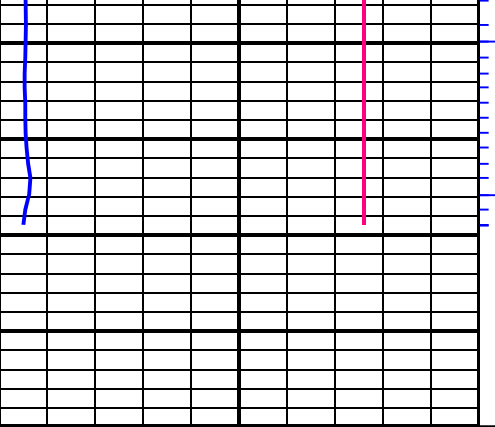
7300

7400



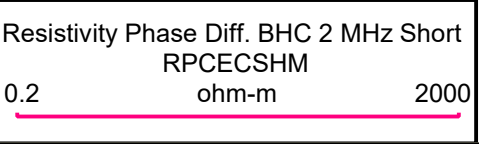
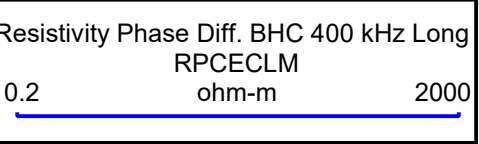
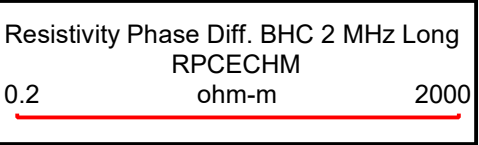
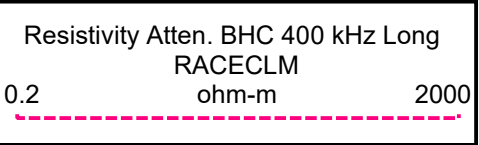
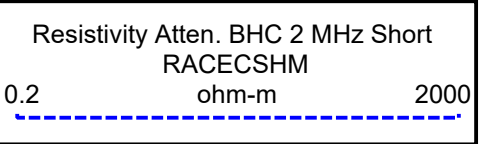
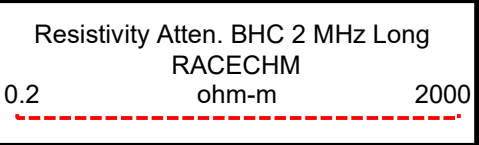
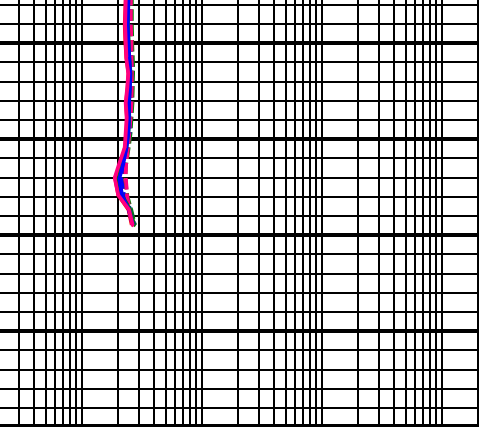
7278.00 MD, 7093.95 TVD
12.02 INC, 185.34 AZC

7373.00 MD, 7186.69 TVD
13.04 INC, 194.37 AZC



7450

1:240
FEET
MD



Directional Surveys

EQUIPMENT

Log Run	1				
Bit Run	1				
Start Date/Time	2023-12-20 19:22:31				
Start Depth (ft)	10736				
End Date/Time	2023-12-24 15:10:00				
End Depth (ft)	18192				

Serial Numbers

Surface Gear					
Flow Sub					
Pulser					
Battery 1					
Battery 2					
Turbine Alternator					

Directional Sensor Gamma Sensor WPR Sensor Vibration Sensor	139				
Sensor Offsets To Bit					
Directional (ft) Gamma Ray (ft) WPR (ft) PWD (ft) Vibration (ft)	10763				