

# FEDERAL NOAA 11-32 (05-123-21062) (12321062\_FL): Partial Abandon in Place Layout

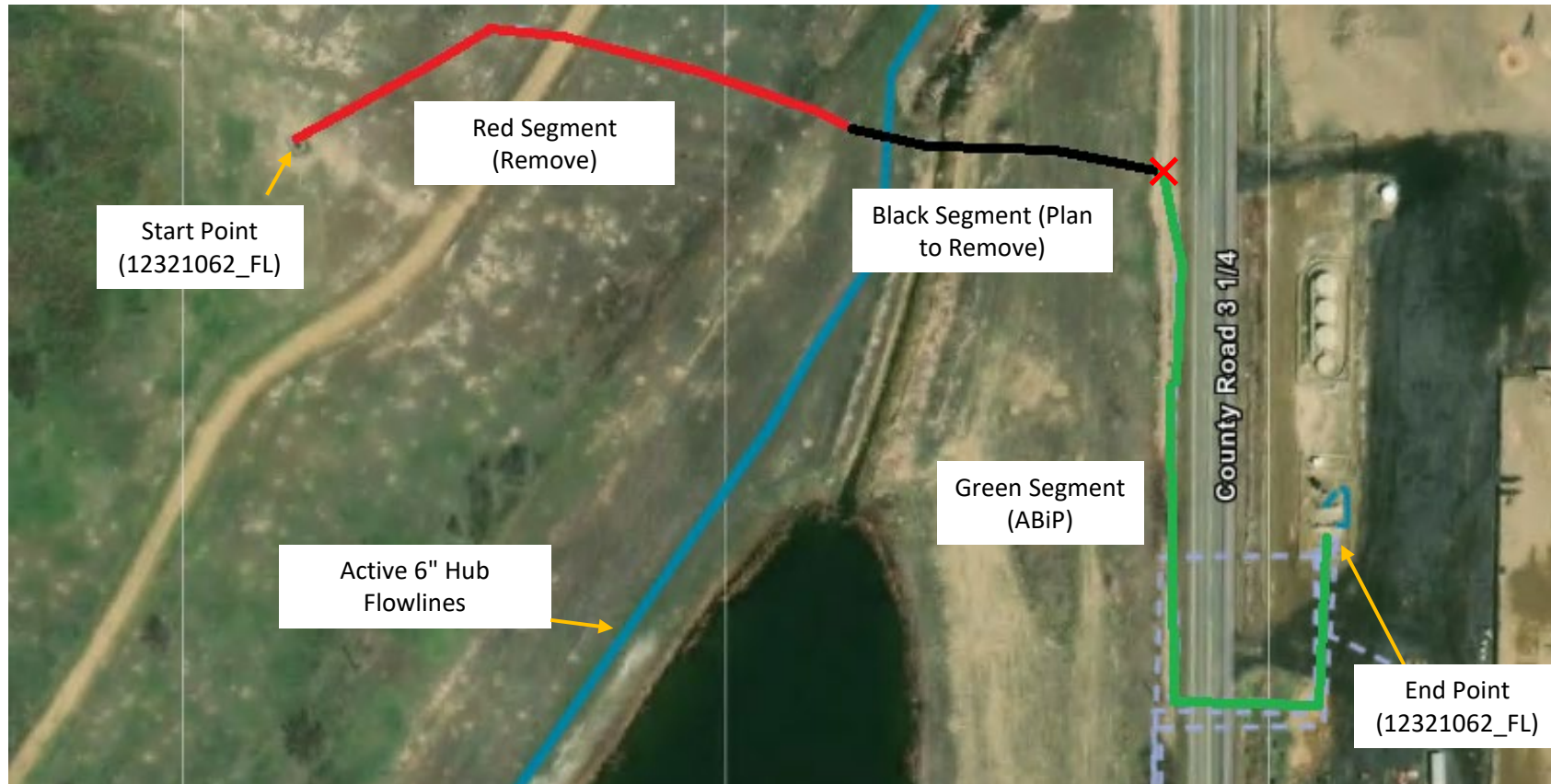
40.100582, -105.034467

NWNW Sec. 32 T2N, R68W, 6th PM

Weld County, Colorado

Crestone Peak Resources (10633)

| Flowline Unique OperFeatID | Line Type  | Start Location Latitude | Start Location Longitude | End Location Latitude (Cut Point) | End Location Longitude (Cut Point) | Segment Length (ft) | Segment | Abandonment Type |
|----------------------------|------------|-------------------------|--------------------------|-----------------------------------|------------------------------------|---------------------|---------|------------------|
| 12321062_FL                | Multiphase | 40.100582               | -105.034467              | 40.100631                         | -105.033228                        | 390'                | Red     | Remove           |
| 12321062_FL                | Multiphase | 40.100631               | -105.033228              | 40.100516                         | -105.032276                        | 250'                | Black   | Plan to remove   |
| 12321062_FL                | Multiphase | 40.100516               | -105.032276              | 40.099823                         | -105.031866                        | 580'                | Green   | ABiP             |



**Segment End Points**  
 X Indicates where flowline abandonment type changes