



---

# **Bayswater Exploration & Production LLC LONG STRING POST JOB REPORT**

**Topaz West #1 05-123-51546  
S:6 T:7N R:65W Weld CO**

CallSheet #: 81667  
Proposal #: 60134



**LONG STRING Post Job Report**

**Attention:** Trevor Smith | (720) 335-9045 | [trevor.smith@iptenergyservices.com](mailto:trevor.smith@iptenergyservices.com)  
Bayswater Exploration & Production LLC  
730 17TH STREET | DENVER, CO 80202

---

Dear Trevor Smith,

Thank you for the opportunity to provide cementing services on this well. American Cementing strives to achieve complete customer satisfaction. If you have any questions regarding the services or data provided, please contact American Cementing at any time.

Sincerely,

**Jason Creel**

Field Engineer Lead | (307) 256-0306 | [jason.creel@americancementing.com](mailto:jason.creel@americancementing.com)

**Field Office**      1716 E Allison Rd, Cheyenne, WY 82007  
Phone: (307) 414-0049

## Job Details & Summary

### Geometry

Type	Function	OD (in)	ID (in)	Weight (lb/ft)	Top (ft)	Bottom (ft)	Excess (%)
Casing	Outer	9.625	8.921	36	0	1552	0
Open Hole	Outer		8.5		1552	18032	5
Casing	Inner	5.5	4.778	20	0	18023	0

### Equipment / People

Unit Type	Unit
Field Storage Silo	FSS(CTS)-449
Field Storage Silo	FSS(CTS)-459
Field Storage Silo	FSS(CTS)-441
AS Cement Trailer Float	CTF(FTF)-031
AS Cement Trailer Float	CTF(FUF)-308
AS Cement Trailer Float	CTF-9054
AS Cement Trailer Float	CTF-0002
Cement Trailer Float	CTF-338
Cement Trailer Float	CTF-193
Cement Trailer Float	CTF-001
Light Duty Vehicles	LDV-048
Cement Pump Float	CPF-184
Light Duty Vehicles	LDV-051

### Timing

Event	Date/Time
Call Out	5/29/2022 14:00
Depart Facility	5/29/2022 16:00
On Location	5/29/2022 18:00
Rig Up Iron	5/29/2022 19:00
Job Started	5/29/2022 22:07
Job Completed	5/30/2022 01:27
Rig Down Iron	5/30/2022 02:00
Depart Location	5/30/2022 04:00

### General Job Information

Metrics	Value
Well Fluid Density	9.9 lb/gal
Well Fluid Type	OBM
Rig Circulation Vol	2340 bbls
Rig Circulation Time	3 hours
Calculated Displacement	399.51 bbls
Actual Displacement	399 bbls
Total Spacer to Surface	80 bbls
Total CMT to Surface	39 bbls
Well Topped Out	No

### Casing Equipment

Type	Description	Qty
CENTRALIZER,5-1/2"NON-WELD	Rigid	210

## Job Details

Metrics	Value
Flare Prior to Job	No
Flare Prior to Job	0 units
Flare During Job	No
Flare During Job	0 units
Flare at End of Job	No
Flare at End of Job	0 units
Well Full Prior to Job	Yes
Well Fluid Density Into Well	9.9 lb/gal
Well Fluid Density Out of Well	9.9 lb/gal

## Job Details (cont.)

Metrics	Value
BHCT	225 °F
BHST	225 °F

## Water Analysis

Metrics	Value	Recommended
Water Source	Upright Rig Tank	
Temperature	65 °F	50-80 °F
pH Level	7	5.5-8.5
Chlorides	0 mg/L	0-3000 mg/L
Total Alkalinity	180	0-1000
Total Hardness	. mg/L	0-500 mg/L
Carbonates	. mg/L	0-100 mg/L
Sulfates	>400 mg/L	0-1500 mg/L
Potassium	0 mg/L	0-3000 mg/L
Iron	0.5 mg/L	0-300 mg/L

## Circulation

Lost Circulation Experienced
No

## Job Execution Information

Fluid	Product	Function	Density (lb/gal)	Yield (ft <sup>3</sup> /sk)	Water Rq. (gal/sk)	Water Rq. (gal/bbl)	Volume (sks)	Volume (bbl)	Designed Top (ft)
1	EZ Spacer II	Spacer	12.00			28.21		40.00	0
2	EZ Spacer II	Spacer	11.50			28.21		20.00	0
3	EZ Spacer II	Spacer	11.00			28.21		20.00	0
4	ACem P100.3.01C	Lead	13.20	1.79	9.36		1040.00	331.29	0
5	ACem P50.6.02C	Tail	13.50	1.50	7.57		1683.00	450.77	7552
6	Retarded Water + Chems	Displacement	8.37			41.43		10.00	17595
7	Water + Chems	DisplacementFinal	8.37			41.53		391.00	0

## Job Fluid Details

Fluid	Type	Fluid	Product	Function	Conc.	Uom
1	Spacer	EZ Spacer II	FLY ASH (POZZOLAN)	Extender	256.50	lb/bbl
1	Spacer	EZ Spacer II	GW-86	Viscosifier	1.20	lb/bbl
1	Spacer	EZ Spacer II	R-31	Retarder	0.50	lb/bbl
1	Spacer	EZ Spacer II	R-7C	Retarder	2.00	lb/bbl
1	Spacer	EZ Spacer II	Surfactant, S-801c	Surfactant	1.00	gal/bbl
2	Spacer	EZ Spacer II	FLY ASH (POZZOLAN)	Extender	256.50	lb/bbl
2	Spacer	EZ Spacer II	GW-86	Viscosifier	1.20	lb/bbl
2	Spacer	EZ Spacer II	R-31	Retarder	0.50	lb/bbl
2	Spacer	EZ Spacer II	R-7C	Retarder	2.00	lb/bbl
2	Spacer	EZ Spacer II	Surfactant, S-801c	Surfactant	1.00	gal/bbl
3	Spacer	EZ Spacer II	FLY ASH (POZZOLAN)	Extender	256.50	lb/bbl
3	Spacer	EZ Spacer II	GW-86	Viscosifier	1.20	lb/bbl
3	Spacer	EZ Spacer II	R-31	Retarder	0.50	lb/bbl
3	Spacer	EZ Spacer II	R-7C	Retarder	2.00	lb/bbl
3	Spacer	EZ Spacer II	Surfactant, S-801c	Surfactant	1.00	gal/bbl
4	Lead	ACem P100.3.01C	ASTM TYPE III	Cement	70.00	%
4	Lead	ACem P100.3.01C	FLY ASH (ROCKIES)	Extender	30.00	%
4	Lead	ACem P100.3.01C	BA-90	BondEnhancer	3.00	lb/sk
4	Lead	ACem P100.3.01C	BENTONITE	Viscosifier	4.00	%BWOB
4	Lead	ACem P100.3.01C	EC-2	BondEnhancer	3.00	%BWOB
4	Lead	ACem P100.3.01C	FL-24	FluidLoss	0.20	%BWOB
4	Lead	ACem P100.3.01C	FL-66	FluidLoss	0.30	%BWOB
4	Lead	ACem P100.3.01C	FP-24	Defoamer	0.30	%BWOB

Fluid	Type	Fluid	Product	Function	Conc.	Uom
4	Lead	ACem P100.3.01C	GW-86	Viscosifier	0.05	%BWOB
4	Lead	ACem P100.3.01C	SR-20	Retarder	0.20	%BWOB
5	Tail	ACem P50.6.02C	CLASS G	Cement	50.00	%
5	Tail	ACem P50.6.02C	FLY ASH (ROCKIES)	Extender	50.00	%
5	Tail	ACem P50.6.02C	BENTONITE	Viscosifier	4.00	%BWOB
5	Tail	ACem P50.6.02C	FL-24	FluidLoss	0.20	%BWOB
5	Tail	ACem P50.6.02C	FP-24	Defoamer	0.30	%BWOB
5	Tail	ACem P50.6.02C	GW-86	Viscosifier	0.10	%BWOB
5	Tail	ACem P50.6.02C	SR-20	Retarder	0.15	%BWOB
5	Tail	ACem P50.6.02C	STATIC FREE	Other	0.01	lb/sk
6	Displacement	Retarded Water + Chems	BIOCIDE,BIOC11139W	Biocide	0.01	gal/bbl
6	Displacement	Retarded Water + Chems	CI-27	Other	0.21	gal/bbl
6	Displacement	Retarded Water + Chems	OXYGEN SCAVENGER, OS-30	Other	0.17	gal/bbl
6	Displacement	Retarded Water + Chems	ResCare CS-2	ClayProtection	0.08	gal/bbl
6	Displacement	Retarded Water + Chems	SR-61L	Retarder	0.10	gal/bbl
7	DisplacementFinal	Water + Chems	BIOCIDE,BIOC11139W	Biocide	0.01	gal/bbl
7	DisplacementFinal	Water + Chems	CI-27	Other	0.21	gal/bbl
7	DisplacementFinal	Water + Chems	OXYGEN SCAVENGER, OS-30	Other	0.17	gal/bbl
7	DisplacementFinal	Water + Chems	ResCare CS-2	ClayProtection	0.08	gal/bbl

## Job Logs

Line	Event	Date (MM/DD/YY)	Time (HH:MM)	Density (lb/gal)	Pump Rate (bpm)	Pump Volume (bbls)	Pipe Pressure (psi)	Comment
1	Call Out	5/29/2002	14:00					ACC gets called out. Requested t/l 20:00
2	Depart Facility	5/29/2022	16:00					ACC departs facility
3	Arrived To Location	5/29/2042	18:00					ACC arrives to location. Rig is currently running casing
4	Rig Up	5/29/2062	19:00					ACC spots in units and rigs up equipment
5	Safety Meeting	5/29/2082	21:50					ACC had a pre-job safety meeting with rig hands and OSR. Went over job procedure
6	Pressure Test	5/29/2102	22:05				5000	Pressure test pump/lines to 5000PSI
7	Pump EZ-II Spacer	5/29/2122	22:07	12	6		903	Start mixing and pumping EZ-II Spacer @ 12PPG @ 6BPM w/ 903PSI
8	Pump EZ-II Spacer	5/29/2142	22:10	11.5	6	40	595	At 40 BBLS away into EZ-II Spacer, dropped to 11.5PPG @ 6BPM w/ 595PSI
9	Pump EZ-II Spacer	5/29/2162	22:22	11	6	60	550	At 60 BBLS away into EZ-II Spacer, dropped to 11PPG @ 6BPM w/ 550PSI
10	Pump Lead CMT	5/29/2182	22:31	13.2	8.5	331.55	599	Pumped 331.55 BBLS of Lead CMT (1040SKS 13.2PPG 1.79YLD 9.4G/SK) @ 8.5BPM w/ 599PSI
11	Pump Tail CMT	5/29/2022	23:10	13.5	8.5	449.61	577	Pumped 449.61 BBLS of Tail CMT (1683SKS 13.5PPG 1.50YLD 7.6G/SK) @ 8.5BPM w/ 577PSI
12	Shut Down	5/30/2022	00:13					Shut down pumping CMT
13	Wash Up Pump/Lines	5/30/2022	00:14					Washed pump/lines to open top
14	Drop Bottom Plug	5/30/2022	00:23					Dropped bottom plug
15	Pump 5 BBLS SR-61L	5/30/2022	00:24	8.33	5.5	5	347	Pumped 5 BBLS w/ SR-61L for wet shoe @ 5.5BPM w/ 347PSI
16	Drop Top Plug	5/30/2022	00:25					Shut down, dropped top plug
17	Pump Disp	5/30/2022	00:27	8.33	10		1000	Came back online with disp @ 10BPM w/ 1000PSI
18	Spacer To Surface	5/30/2022	00:55	8.33	10	270	3500	Shut down @ 270 BBLS away into disp, Spacer to surface @ 10BPM w/ 3500PSI
19	Came Back Online	5/30/2022	00:57	8.33	6		3200	Came back online with disp @ 6BPM w/ 3200PSI
20	CMT To Surface	5/30/2022	01:15	8.33	6	360	3200	CMT to surface @ 360 BBLS away into disp @ 6BPM w/ 3200PSI
21	Slow Rate	5/30/2022	01:17	8.33	3	380	2800	Slowed down rate @ 380 BBLS away into disp @ 3BPM w/ 2800PSI
22	Burst Bottom Plug	5/30/2022	01:21	8.33	3	394	2800	At 394 BBLS away into disp, burst bottom plug @ 3BPM w/ 3700PSI
23	Burst Top Plug	5/30/2022	01:23	8.33	3	399	2800	At 399 BBLS away into disp, burst top plug @ 3BPM w/ 4500PSI
24	Shut Down	5/30/2022	01:24					Shut down pumping disp
25	Check Floats	5/30/2022	01:27					Checked floats, got 3 BBLS back
26	Rig Down	5/30/2022	02:00					ACC rigged down equipment
27	Depart Location	5/30/2022	04:00					ACC departed location
28	Other	5/30/2022	04:01			39		Total CMT back to surface, 39 BBLS

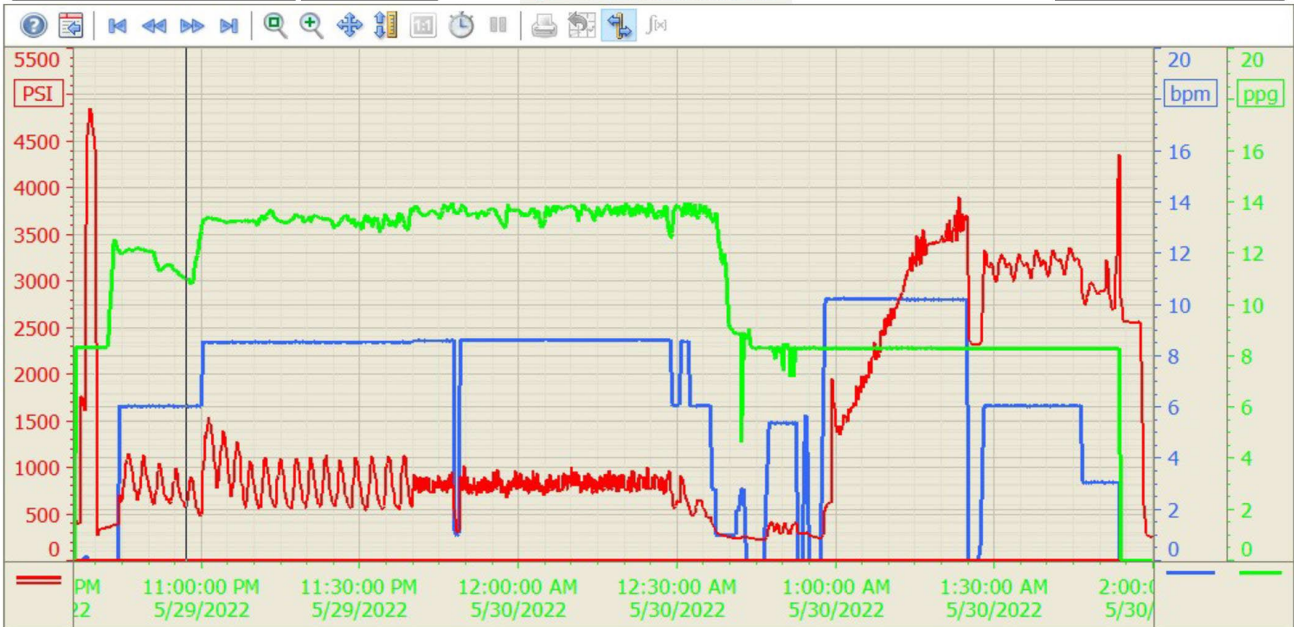
## Pump Diagrams

### Summary Trend

Bayswater Exp 1



Lease: Topaz West



5/30/2022 2:23:38 AM