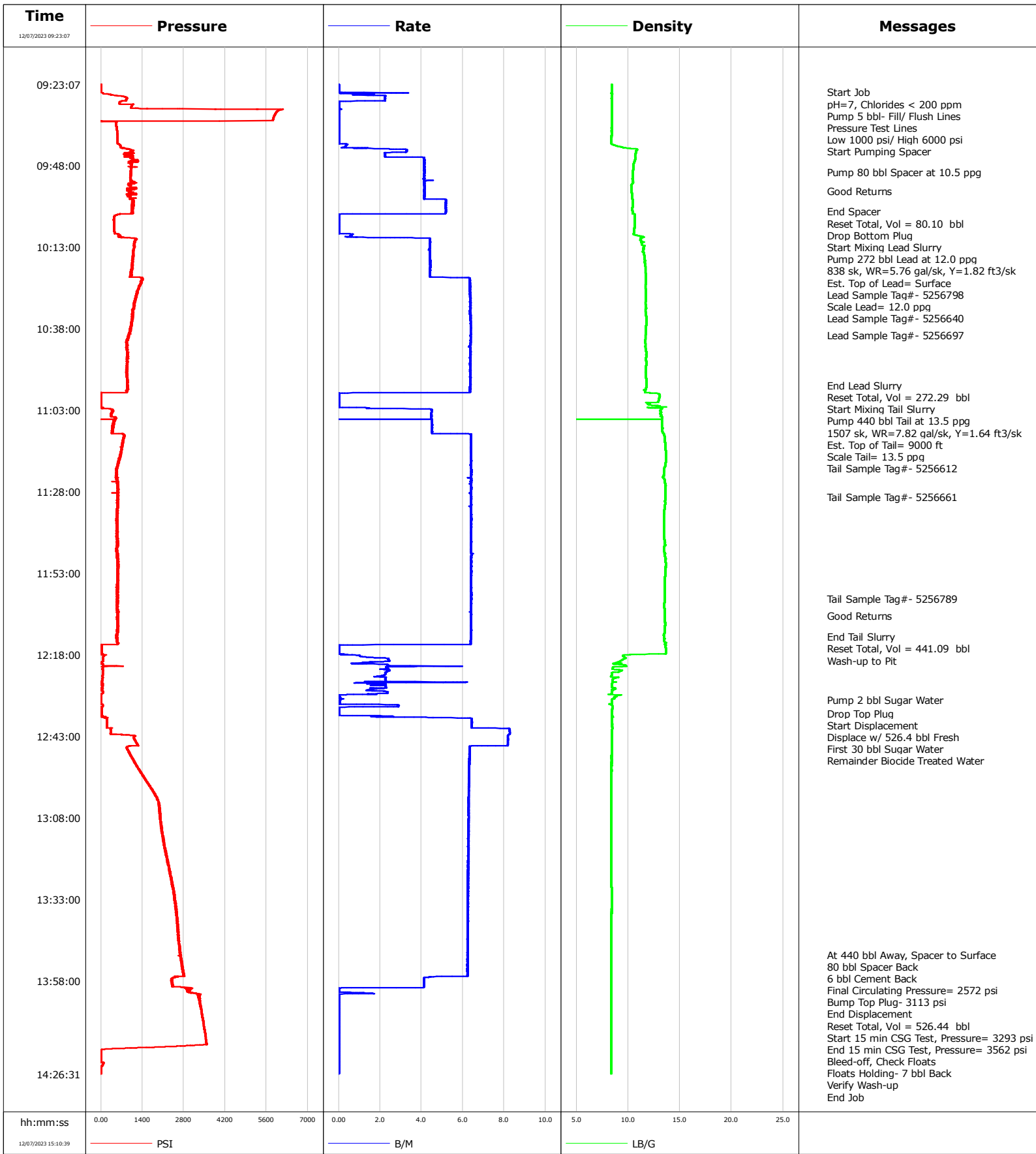


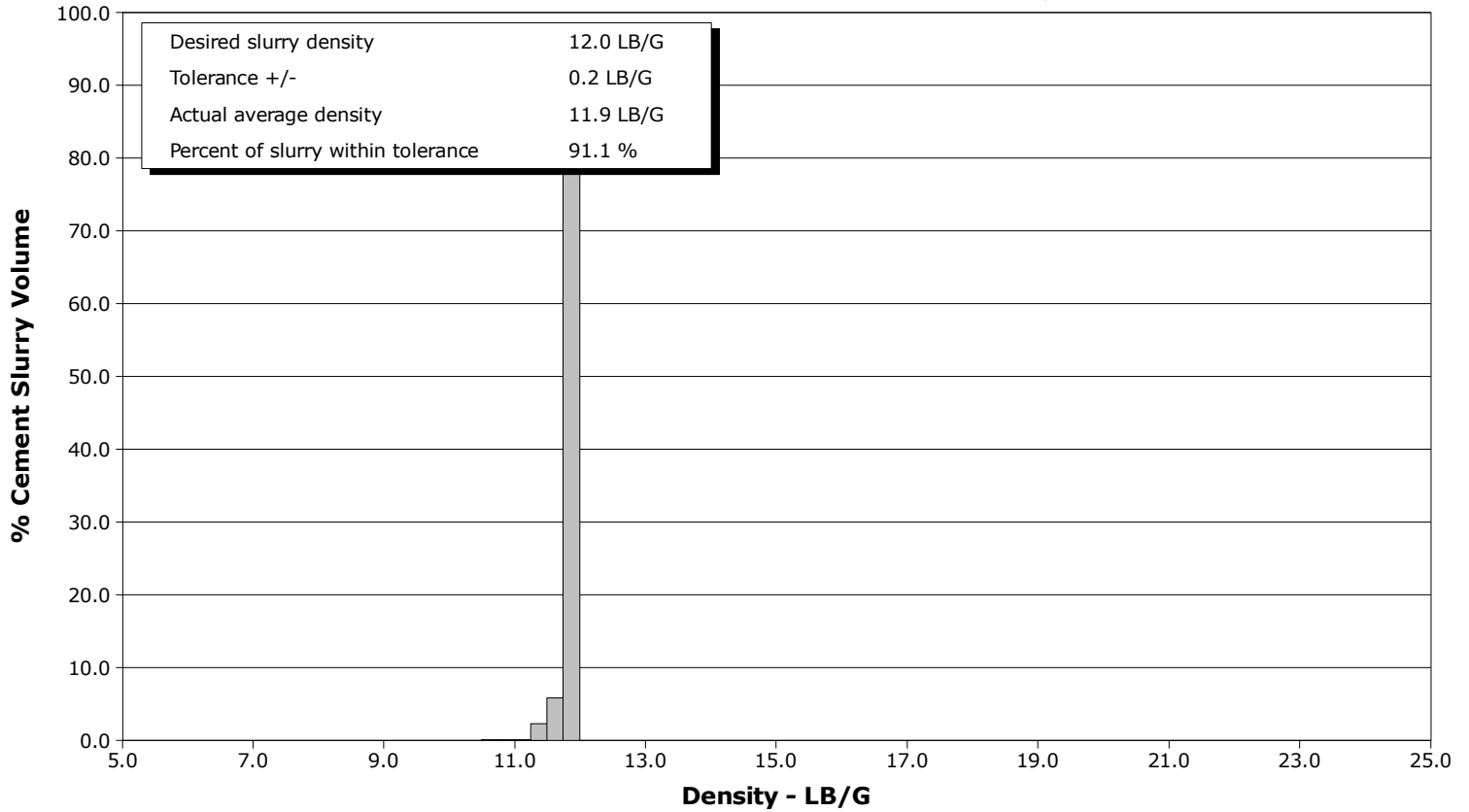
Well	Hethcock 5-7HZ	Client	OXY
Field	Wattenberg	SIR No.	EOIC-02403
Engineer	Thomas Bailey	Job Type	Production
Country	United States	Job Date	12-06-2023



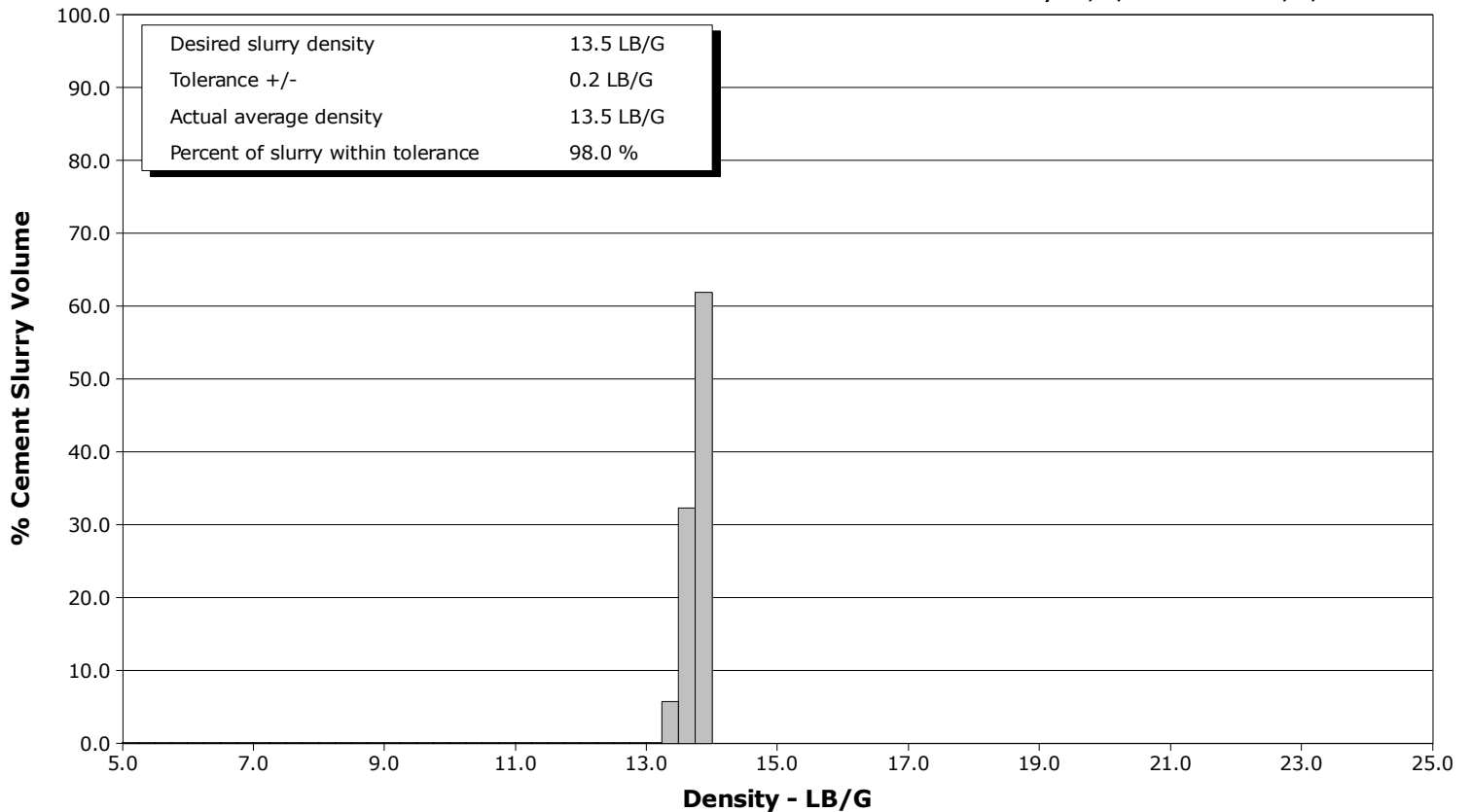
Well Hethcock 5-7HZ
Field Wattenberg
Engineer Thomas Bailey
Country United States

Client OXY
SIR No. EOIC-02403
Job Type Production
Job Date 12-06-2023

Lead Slurry - 12/07/2023 10:09:00 to 12/07/2023 10:55:26



Tail Slurry - 12/07/2023 11:01:34 to 12/07/2023 12:12:30



				Customer			Job Number			
				OXY			EOIC-02403			
Well		Location (legal)			Schlumberger Location			Job Start		
Hethcock 5-7HZ		P562			Windsor			Dec/07/2023		
Field		Formation Name/Type			Deviation	Bit Size	Well MD		Well TVD	
Wattenberg					deg	7.9 in	22705.0 ft		7162.0 ft	
County		State/Province			BHP	BHST	BHCT	Pore Press. Gradient		
Weld		Colorado			psi	230 degF	230 degF	lb/gal		
Well Master		API/UWI								
0066690816		05-123-52111-00-00								
Rig Name	Drilled For		Service Via		Casing/Liner					
P562	Oil & Gas		Land							
	Depth, ft	Size, in	Weight, lb/ft	Grade	Thread					
Offshore Zone	Well Class	Well Type	1935.0	9.6	36.0					
N/a	New	Development	22695.0	5.5	17.0					
Drilling Fluid Type		Max. Density	Plastic Viscosity		Tubing/Drill Pipe					
Oil Mud		9.50 lb/gal	cP							
T/D	Depth, ft	Size, in	Weight, lb/ft	Grade	Thread					
Service Line	Job Type									
Cementing	Production									
Max. Allowed Tub. Press	Max. Allowed Ann. Press		WH Connection		Perforations/Open Hole					
psi	psi		Double Cement head							
	Top, ft	Bottom, ft	shot/ft	No. of Shots	Total Interval					
	ft	ft			ft					
	ft	ft			Diameter					
	ft	ft			in					
Treat Down		Displacement		Packer Type		Packer Depth				
Casing		526.4 bbl				ft				
Tubing Vol.		Casing Vol.		Annular Vol.		Openhole Vol.				
bbl		527.4 bbl		733.3 bbl		640.6 bbl				
Casing/Tubing Secured		1 Hole Vol. Circulated prior to Cement		Casing Tools			Squeeze Job			
<input type="checkbox"/>		<input type="checkbox"/>								
Lift Pressure		Shoe Type			Shoe Depth		Squeeze Type			
2547 psi		Float			22695.0 ft					
Pipe Rotated		Pipe Reciprocated		Stage Tool Type			Tool Depth			
<input type="checkbox"/>		<input type="checkbox"/>					ft			
No. Centralizers		Top Plugs	Bottom Plugs	Stage Tool Depth			Tail Pipe Size			
		1	1	ft			in			
Cement Head Type		Job Scheduled For			Arrived on Location		Leave Location		Collar Type	
Double		Dec/07/2023 03:00			Dec/07/2023 02:00		Dec/06/2023 15:00		Float	
		Collar Depth	Sqz. Total Vol.							
		22652.0 ft	bbl							
Date	Time 24-hr clock	Treating Pressure PSI	Flow Rate B/M	Density LB/G	Volume BBL	Message				
12/07/2023	09:23:07	5	0.0	8.40	17.4	Started Acquisition				
12/07/2023	09:25:32	6	0.0	8.40	0.0	Start Job				
12/07/2023	09:26:27	454	1.4	8.40	1.1					
12/07/2023	09:27:00	821	2.2	8.40	2.3	pH=7, Chlorides < 200 ppm				
12/07/2023	09:28:00	843	2.2	8.40	4.5	Pump 5 bbl- Fill/ Flush Lines				
12/07/2023	09:29:47	1035	0.0	8.40	5.1					
12/07/2023	09:30:00	1025	0.0	8.40	5.1	Pressure Test Lines				
12/07/2023	09:31:00	6041	0.0	8.40	5.1	Low 1000 psi/ High 6000 psi				
12/07/2023	09:33:07	5845	0.0	8.40	5.1					
12/07/2023	09:36:27	527	0.0	8.40	5.1					
12/07/2023	09:39:47	560	0.0	8.39	5.1					
12/07/2023	09:42:43	723	0.7	10.10	5.7	Start Pumping Spacer				
12/07/2023	09:43:07	985	3.3	10.87	6.6					
12/07/2023	09:46:27	1073	4.1	10.63	16.8					
12/07/2023	09:49:47	1016	4.1	10.44	30.6					
12/07/2023	09:50:00	1001	4.2	10.42	31.5	Pump 80 bbl Spacer at 10.5 ppg				
12/07/2023	09:53:07	1014	4.1	10.47	44.4					
12/07/2023	09:55:44	898	4.1	10.33	55.2	Good Returns				
12/07/2023	09:56:27	1003	4.1	10.36	58.2					
12/07/2023	09:59:47	1095	5.2	10.44	73.5					
12/07/2023	10:02:09	1032	5.2	10.42	85.7	End Spacer				

Well			Field		Job Start	Customer		Job Number
Hethcock 5-7HZ			Wattenberg		Dec/07/2023	OXY		EOIC-02403
Date	Time 24-hr clock	Treating Pressure PSI	Flow Rate B/M	Density LB/G	Volume BBL	Message		
12/07/2023	10:03:07	549	0.0	10.64	89.4			
12/07/2023	10:06:27	443	0.0	10.61	89.4			
12/07/2023	10:08:33	453	0.0	10.59	89.4	Drop Bottom Plug		
12/07/2023	10:09:00	581	0.6	10.52	89.4	Start Mixing Lead Slurry		
12/07/2023	10:09:47	621	0.6	11.39	89.9			
12/07/2023	10:11:00	1156	4.4	11.22	93.9	Pump 272 bbl Lead at 12.0 ppg		
12/07/2023	10:13:00	1131	4.4	11.51	102.7	838 sk, WR=5.76 gal/sk, Y=1.82 ft3/sk		
12/07/2023	10:13:07	1124	4.4	11.50	103.3			
12/07/2023	10:15:40	1076	4.4	11.56	114.5	Est. Top of Lead= Surface		
12/07/2023	10:16:20	1068	4.4	11.59	117.4	Lead Sample Tag#- 5256798		
12/07/2023	10:16:27	1079	4.4	11.60	118.0			
12/07/2023	10:19:47	1055	4.4	11.67	132.7			
12/07/2023	10:21:43	1034	4.4	11.71	141.2	Scale Lead= 12.0 ppg		
12/07/2023	10:23:07	1408	6.3	11.74	148.9			
12/07/2023	10:26:27	1253	6.3	11.71	170.0			
12/07/2023	10:29:47	1157	6.3	11.70	191.2			
12/07/2023	10:30:00	1149	6.4	11.69	192.6	Lead Sample Tag#- 5256640		
12/07/2023	10:33:07	1083	6.4	11.70	212.4			
12/07/2023	10:36:27	1058	6.4	11.77	233.6			
12/07/2023	10:39:47	944	6.4	11.71	254.9			
12/07/2023	10:40:00	935	6.4	11.69	256.2	Lead Sample Tag#- 5256697		
12/07/2023	10:43:07	913	6.4	11.68	276.1			
12/07/2023	10:46:27	887	6.3	11.75	297.3			
12/07/2023	10:49:47	892	6.3	11.74	318.4			
12/07/2023	10:53:07	910	6.4	11.74	339.6			
12/07/2023	10:55:26	919	6.4	11.75	354.3	End Lead Slurry		
12/07/2023	10:56:00	919	6.3	11.75	357.9	Reset Total, Vol = 272.29 bbl		
12/07/2023	10:56:27	907	6.3	11.74	360.8			
12/07/2023	10:59:47	14	0.0	12.97	368.7			
12/07/2023	11:01:34	12	0.0	12.54	368.7	Start Mixing Tail Slurry		
12/07/2023	11:03:00	421	4.5	13.16	371.0	Pump 440 bbl Tail at 13.5 ppg		
12/07/2023	11:03:07	385	4.5	13.10	371.5			
12/07/2023	11:05:00	329	4.5	13.26	380.0	1507 sk, WR=7.82 gal/sk, Y=1.64 ft3/sk		
12/07/2023	11:06:27	449	4.5	13.26	386.5			
12/07/2023	11:07:46	419	4.5	13.27	392.4	Est. Top of Tail= 9000 ft		
12/07/2023	11:09:47	369	4.5	13.33	401.5			
12/07/2023	11:12:35	760	6.4	13.56	418.5	Scale Tail= 13.5 ppg		
12/07/2023	11:13:07	715	6.4	13.57	421.9			
12/07/2023	11:16:27	663	6.4	13.63	443.2			
12/07/2023	11:17:41	619	6.4	13.62	451.1	Tail Sample Tag#- 5256612		
12/07/2023	11:19:47	558	6.4	13.59	464.5			
12/07/2023	11:23:07	536	6.4	13.43	485.9			
12/07/2023	11:26:27	562	6.4	13.60	507.2			
12/07/2023	11:29:37	560	6.4	13.59	527.4	Tail Sample Tag#- 5256661		
12/07/2023	11:29:47	584	6.4	13.59	528.5			
12/07/2023	11:36:27	544	6.4	13.43	571.2			
12/07/2023	11:39:47	546	6.4	13.44	592.5			
12/07/2023	11:43:07	538	6.4	13.54	613.9			
12/07/2023	11:46:27	526	6.4	13.50	635.2			
12/07/2023	11:49:47	550	6.4	13.62	656.5			
12/07/2023	11:53:07	562	6.4	13.58	677.9			
12/07/2023	11:56:27	567	6.4	13.54	699.2			
12/07/2023	11:59:47	572	6.4	13.54	720.6			
12/07/2023	12:00:52	571	6.4	13.53	727.5	Tail Sample Tag#- 5256789		

Well Hethcock 5-7HZ			Field Wattenberg		Job Start Dec/07/2023	Customer OXY	Job Number EOIC-02403
Date	Time 24-hr clock	Treating Pressure PSI	Flow Rate B/M	Density LB/G	Volume BBL	Message	
12/07/2023	12:06:00	540	6.4	13.56	760.4	Good Returns	
12/07/2023	12:06:27	584	6.4	13.56	763.2		
12/07/2023	12:09:47	591	6.4	13.56	784.6		
12/07/2023	12:12:30	530	6.4	13.45	802.0	End Tail Slurry	
12/07/2023	12:13:07	556	6.4	13.52	805.9		
12/07/2023	12:15:00	23	0.4	13.66	817.6	Reset Total, Vol = 441.09 bbl	
12/07/2023	12:16:27	23	0.0	13.64	817.6		
12/07/2023	12:18:20	101	1.0	9.48	817.9	Wash-up to Pit	
12/07/2023	12:19:47	73	2.4	9.35	820.6		
12/07/2023	12:23:07	58	2.3	9.19	828.1		
12/07/2023	12:26:27	3	6.2	8.48	835.9		
12/07/2023	12:29:47	67	2.4	8.43	842.8		
12/07/2023	12:31:50	10	0.1	8.43	843.7	Pump 2 bbl Sugar Water	
12/07/2023	12:33:07	12	0.1	8.20	843.8		
12/07/2023	12:35:54	19	0.0	8.44	845.9	Drop Top Plug	
12/07/2023	12:36:27	19	0.0	8.44	845.9		
12/07/2023	12:37:00	24	2.3	8.45	846.6	Start Displacement	
12/07/2023	12:38:00	209	6.4	8.43	851.9	Displace w/ 526.4 bbl Fresh	
12/07/2023	12:39:47	207	6.4	8.44	863.4		
12/07/2023	12:40:00	201	6.4	8.45	864.7	First 30 bbl Sugar Water	
12/07/2023	12:43:07	1114	8.2	8.40	889.4		
12/07/2023	12:45:00	1201	8.2	8.40	904.8	Remainder Biocide Treated Water	
12/07/2023	12:46:27	879	6.3	8.40	915.7		
12/07/2023	12:49:47	1072	6.3	8.40	936.8		
12/07/2023	12:53:07	1292	6.3	8.40	957.9		
12/07/2023	12:56:27	1533	6.3	8.40	978.9		
12/07/2023	12:59:47	1768	6.3	8.39	999.8		
12/07/2023	13:03:07	1946	6.3	8.39	1020.7		
12/07/2023	13:06:27	2006	6.3	8.39	1041.7		
12/07/2023	13:09:47	2048	6.3	8.39	1062.6		
12/07/2023	13:13:07	2102	6.3	8.39	1083.4		
12/07/2023	13:16:27	2158	6.3	8.39	1104.3		
12/07/2023	13:19:47	2229	6.3	8.39	1125.2		
12/07/2023	13:23:07	2294	6.2	8.39	1146.0		
12/07/2023	13:26:27	2368	6.3	8.40	1166.9		
12/07/2023	13:29:47	2427	6.3	8.40	1187.7		
12/07/2023	13:33:07	2477	6.2	8.40	1208.5		
12/07/2023	13:36:27	2539	6.2	8.40	1229.3		
12/07/2023	13:39:47	2598	6.2	8.39	1250.1		
12/07/2023	13:43:07	2623	6.2	8.39	1270.9		
12/07/2023	13:46:27	2662	6.2	8.39	1291.7		
12/07/2023	13:49:47	2692	6.2	8.39	1312.5		
12/07/2023	13:50:00	2681	6.2	8.39	1313.8	At 440 bbl Away, Spacer to Surface	
12/07/2023	13:52:00	2736	6.2	8.39	1326.3	80 bbl Spacer Back	
12/07/2023	13:53:07	2723	6.2	8.39	1333.2		
12/07/2023	13:54:00	2775	6.2	8.39	1338.7	6 bbl Cement Back	
12/07/2023	13:55:50	2798	6.2	8.39	1350.2	Final Circulating Pressure= 2572 psi	
12/07/2023	13:56:27	2781	6.2	8.39	1354.0		
12/07/2023	13:58:27	2400	4.1	8.39	1362.8	Bump Top Plug- 3113 psi	
12/07/2023	13:59:00	2426	4.1	8.39	1365.1	End Displacement	
12/07/2023	13:59:20	2426	4.1	8.39	1366.4	Reset Total, Vol = 526.44 bbl	
12/07/2023	13:59:47	2450	4.1	8.39	1368.3		
12/07/2023	14:00:20	3027	0.0	8.39	1369.6	Start 15 min CSG Test, Pressure= 3293 psi	
12/07/2023	14:03:07	3317	0.0	8.39	1370.2		

Well		Field		Job Start		Customer		Job Number	
Hethcock 5-7HZ		Wattenberg		Dec/07/2023		OXY		EOIC-02403	
Date	Time 24-hr clock	Treating Pressure PSI	Flow Rate B/M	Density LB/G	Volume BBL	Message			
12/07/2023	14:09:47	3442	0.0	8.39	1370.2				
12/07/2023	14:13:07	3504	0.0	8.39	1370.2				
12/07/2023	14:16:00	3550	0.0	8.39	1370.2	End 15 min CSG Test, Pressure= 3562 psi			
12/07/2023	14:16:27	3555	0.0	8.39	1370.2				
12/07/2023	14:16:30	3556	0.0	8.39	1370.2	Bleed-off, Check Floats			
12/07/2023	14:17:00	3563	0.0	8.39	1370.2	Floats Holding- 7 bbl Back			
12/07/2023	14:19:00	80	0.0	8.39	1370.2	End Job			
12/07/2023	14:19:47	6	0.0	8.39	1370.2				
12/07/2023	14:23:07	84	0.0	8.39	1370.2				
12/07/2023	14:26:27	5	0.0	8.39	1370.2				
12/07/2023	14:29:47	10	0.0	8.37	1370.2				
12/07/2023	14:33:07	9	0.0	8.44	1370.2				
12/07/2023	14:36:27	31	0.0	0.04	1370.2				
12/07/2023	14:39:47	29	0.0	0.06	1370.2				
12/07/2023	14:43:07	31	0.0	0.03	1370.2				
12/07/2023	14:46:27	7	0.0	0.04	1370.2				
12/07/2023	14:49:47	6	0.0	0.04	1370.2				
12/07/2023	14:53:07	8	0.0	0.03	1370.2				
12/07/2023	14:56:27	8	0.0	0.03	1370.2				
12/07/2023	14:59:47	8	0.0	0.02	1370.2				
12/07/2023	15:03:07	6	0.0	0.02	1370.2				
12/07/2023	15:06:27	9	0.0	0.02	1370.2				

Post Job Summary

Average Pump Rates, bbl/min				Volume of Fluid Injected, bbl			
Slurry	N2	Mud	Maximum Rate 0.0	Total Slurry 711.0	Mud 0.0	Spacer 80.0	N2
Treating Pressure Summary, psi				Breakdown Fluid			
Maximum 0	Final 0	Average	Bump Plug to 3113	Breakdown	Type	Volume bbl	Density lb/gal
Avg. N2 Percent %	Designed Slurry Volume 711.0 bbl	Displacement 526.4 bbl	Mix Water Temp 77 degF	Cement Circulated to Surface? <input checked="" type="checkbox"/>	Volume 6.0 bbl	Washed Thru Perfs <input type="checkbox"/>	To ft
Customer or Authorized Representative Joe Wallen			Schlumberger Supervisor Thomas Bailey		Circulation Lost <input type="checkbox"/>	Job Completed <input checked="" type="checkbox"/>	
					-	-	