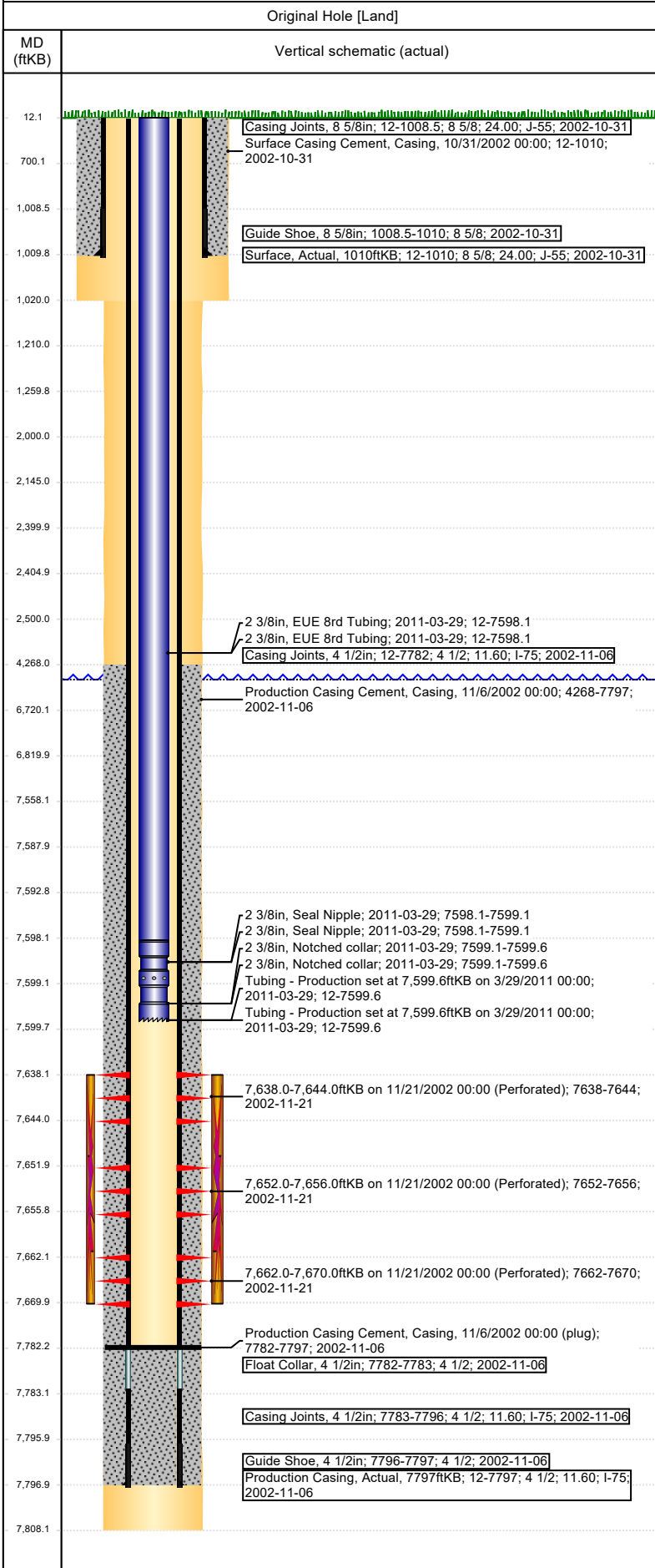




Wellbore Schematic Input Report

Well Name: DECHANT 12-19

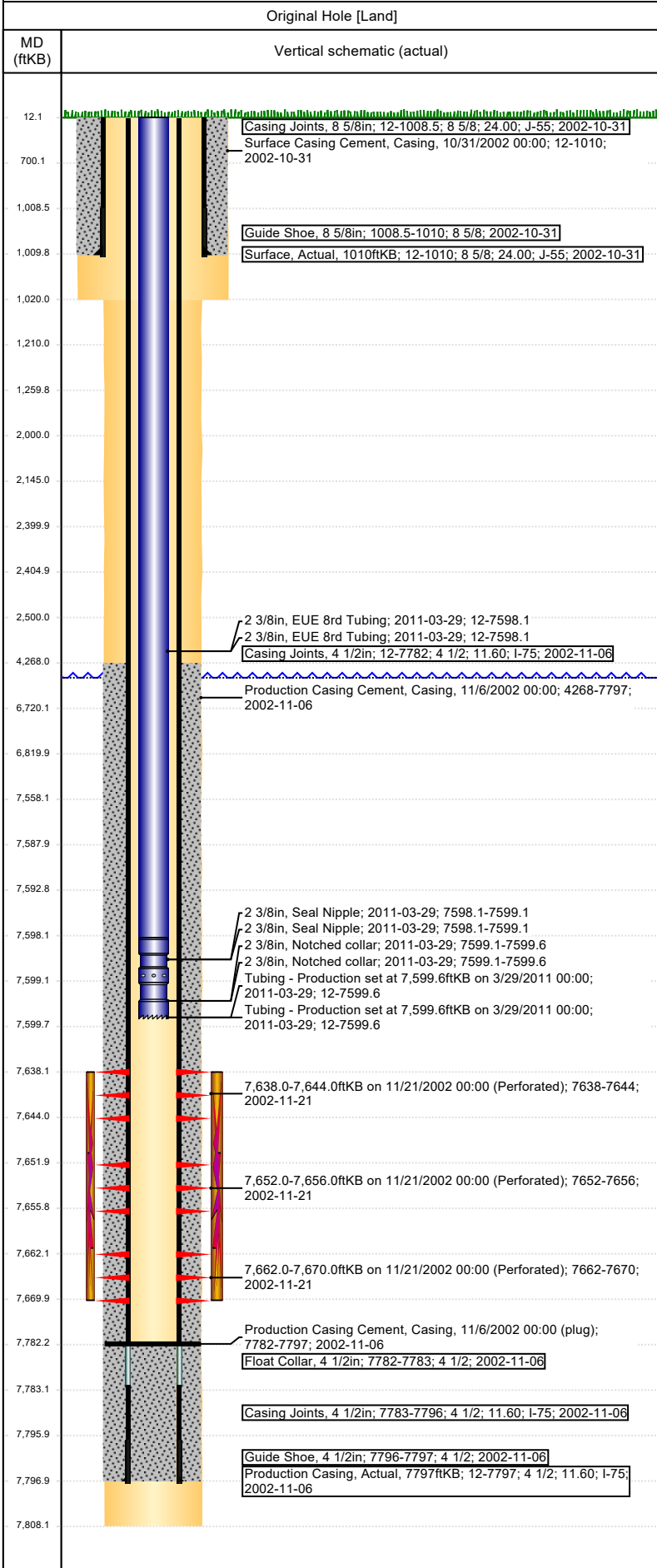


Well Header	
Surface UWI 0512321167	Asset Team
Production Tree Location Land	
Original RKB Elevation (ft) 4,959.00	Original KB to Ground (ft) 12.00
Original Spud Date 10/30/2002	Abandon Date
Range	Well Sub-Status SI
High Pressure N	
Directions To Well WCR 49 & WCR 18, N 1/4, E 1/8 INTO	Latitude (°) 40.120575
	Longitude (°) -104.598386
Comment WELLHEAD IS 3000#/W/H HAS BEEN CHANGED TO 5000K 9-6-2017	
Congressional Location	
Quarter 3 NW	Quarter 4 SW
Section 19	Township 2
Township N/S Dir N	Range 64
Range E/W Dir W	
Rig Operator	
Rig/Unit Supervisor CESAR BUENO	
Daily Cost Summary	
Sum of Field Est (Cost) 0	
Wellbore Plug Back Total Depths	
Date 10/17/2008	PBTD (ftKB) 7,782
Method TAG	Com CLEAN OUT FILL
Wellbore Sections	
Section Des	Hole Size (in)
Top Depth (ftKB)	Btm Depth (ftKB)
SURFACE	12 1/4
PRODUCTION	7 7/8
	1,020.0
	7,808.0
Zone Statuses	
Zone Name	Status Date
Status	
J SAND	5/9/2017
	SI
Casing Strings	
Surface, Actual, 1010ftKB	
Casing Description Surface	Run Date 10/31/2002
OD (in) 8 5/8	Wt/Len (lb/ft) 24.00
Grade J-55	Top Depth (ftKB) 12
Set Depth (ftKB) 1010	
Production Casing, Actual, 7797ftKB	
Casing Description Production Casing	Run Date 11/6/2002
OD (in) 4 1/2	Wt/Len (lb/ft) 11.60
Grade I-75	Top Depth (ftKB) 12
Set Depth (ftKB) 7797	
Cement	
Des	Start Date
Top (ftKB)	Btm (ftKB)
Surface Casing Cement	10/31/2002
	12.0
1,010.0	
Production Casing Cement	11/6/2002
	4,268.0
7,797.0	
Proposed Cement	
Des	Top (ftKB)
Btm (ftKB)	
Dump Bail	7,558.0
	7,588.0
Casing Repair Cement	2,000.0
	2,500.0
Cement Plug	2,405.0
	2,500.0
Cement Plug	2,145.0
	2,400.0
Cement Plug	1,210.0
	1,260.0
Cement Plug	1,020.0
	1,210.0
Cement Plug	1,010.0
	1,020.0
Cement Plug	700.0
	1,010.0
Shoe Plug	12.0
	700.0
Cement Plug	6,720.0
	6,820.0
Tubing Strings	
Tubing Description Tubing - Production	Run Date 3/29/2011
String Make 2 3/8	OD (in) 1.995
Wt (lb/ft) 4.70	Grade J-55
Len (ft) 7,587.61	Set Depth
Tubing Components	
Item Des	OD (in)
Wt (lb/ft)	Grade
Jts	Len (ft)
Btm (ftKB)	Btm (TVD) (ftKB)
EUE 8rd Tubing	2 3/8
4.70	J-55
241	7,586.11
7,598.1	
Seal Nipple	2 3/8
1	1.00
7,599.1	
Notched collar	2 3/8
1	0.50
7,599.6	
Other In Hole	
Run Date	Des
Make	OD (in)
Top (ftKB)	Btm (ftKB)
Proposed Other In Hole	
Des	Make
OD (in)	Top (ftKB)
Btm (ftKB)	
Cement Retainer	4
	2,400.0
2,405.0	
Cast Iron Bridge Plug	4
	7,588.0
7,593.0	



Wellbore Schematic Input Report

Well Name: DECHANT 12-19



Logs				
Date	Type	Depth Top (MD) (ftKB)	Btm (ftKB)	
11/6/2002	COMPENSATED DENSITY	4,350	7,781.0	
11/6/2002	INDUCTION	1,010	7,801.0	
11/12/2002	CBL/CCL/GR	4,101	7,778.0	
10/16/2017	GYRO	0	7,400.0	

Perforation Data				
Linked Zone	Sum of Entered Shot Total	Top (ftKB)	Btm (ftKB)	Date
J SAND, Original Hole	18	7,638.0	7,644.0	11/21/2002
J SAND, Original Hole	12	7,652.0	7,656.0	11/21/2002
J SAND, Original Hole	24	7,662.0	7,670.0	11/21/2002
Total	54			

Proposed Perforations				
Linked Zone	Sum of Entered	Top Depth (ftKB)	Bottom Depth (ftKB)	Date
	0	2,500.0	2,500.0	8/30/2017
Total	0			

Job Supply Amounts				
Supply Item Des	Job Supply Type	Unit	Job Category	Total Req

Daily Cost Breakdown by Category		
Field Est (Cost)	Description	Note