

PHOTO: VIEW OF LOCATION STAKES

CAMERA ANGLE: NORTHERLY



PHOTO: VIEW OF LOCATION STAKES

CAMERA ANGLE: EASTERLY

**NOTE:**

- NORTHERLY STANDING POINT LAT: 40.071757° LONG: -104.542705°
- EASTERLY STANDING POINT LAT: 40.072001° LONG: -104.542702°

**VERDAD RESOURCES, LLC**

**NIGHTHAWK PAD**  
**N 1/2, NW 1/4 SECTION 10, T1N, R64W, 6th P.M.**  
**WELD COUNTY, COLORADO**

TAKEN BY	ORION RICE	08-15-23	
DRAWN BY	K.C.	09-15-23	
<b>LOCATION PHOTOS</b>		<b>PHOTO 1</b>	



**UELS, LLC**  
 Corporate Office \* 85 South 200 East  
 Vernal, UT 84078 \* (435) 789-1017

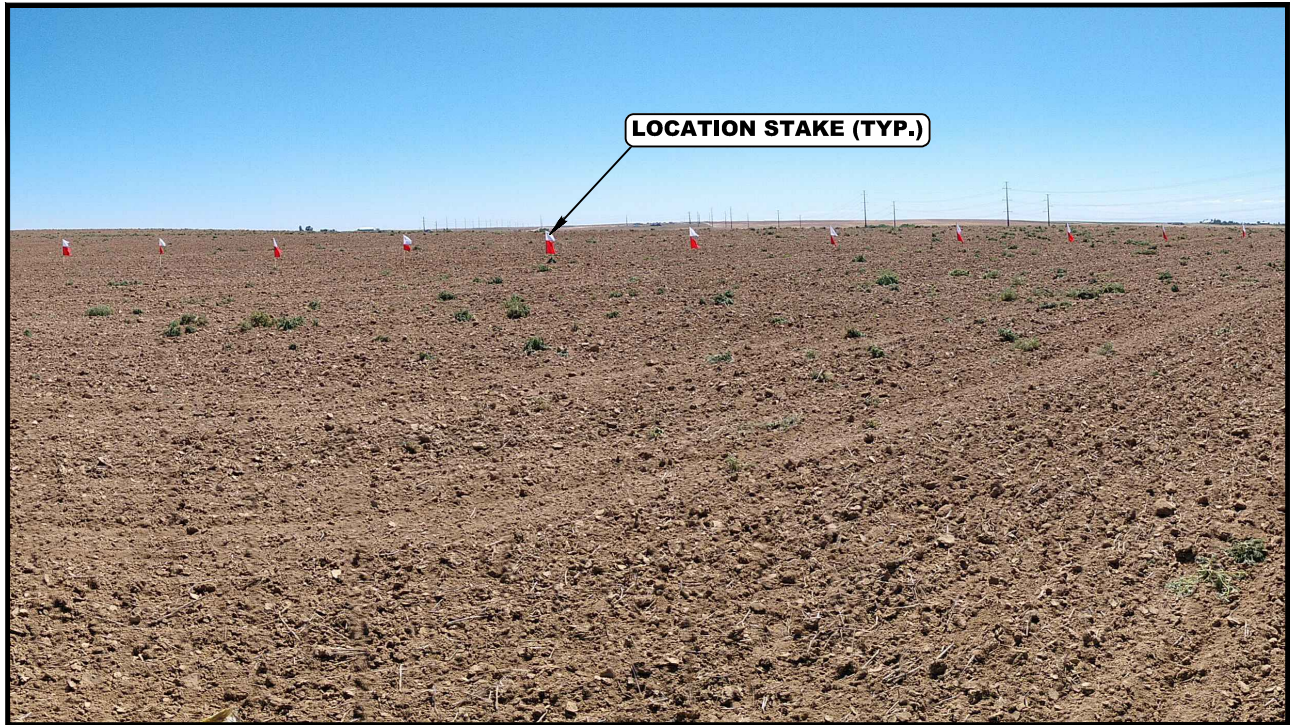


PHOTO: VIEW OF LOCATION STAKES

CAMERA ANGLE: SOUTHERLY



PHOTO: VIEW OF LOCATION STAKES

CAMERA ANGLE: WESTERLY

**NOTE:**

- SOUTHERLY STANDING POINT LAT: 40.072243° LONG: -104.542644°
- WESTERLY STANDING POINT LAT: 40.072001° LONG: -104.542702°

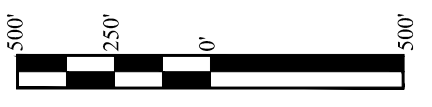
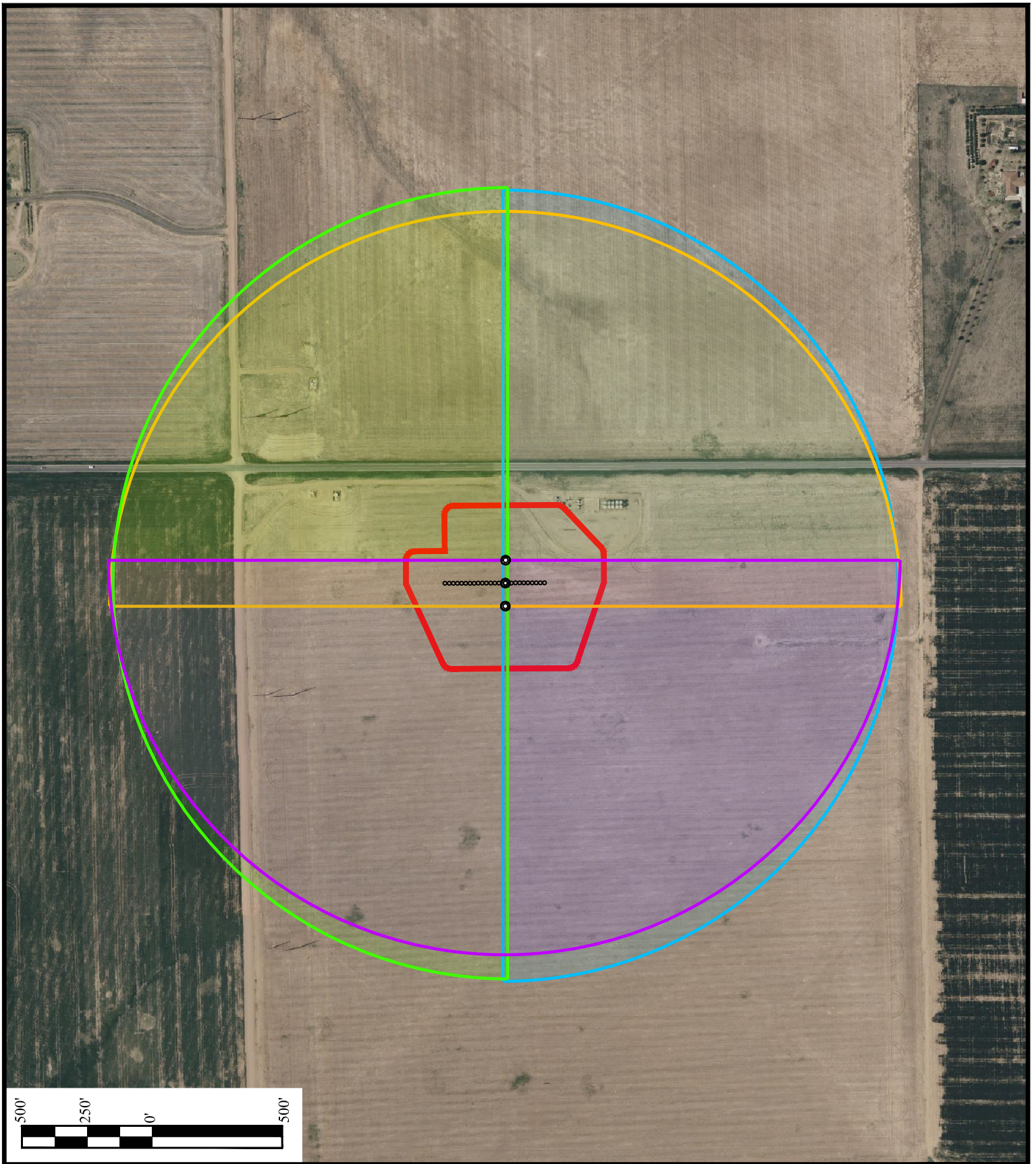
**VERDAD RESOURCES, LLC**

**NIGHTHAWK PAD**  
**N 1/2, NW 1/4 SECTION 10, T1N, R64W, 6th P.M.**  
**WELD COUNTY, COLORADO**

TAKEN BY	ORION RICE	08-15-23	
DRAWN BY	K.C.	09-15-23	
<b>LOCATION PHOTOS</b>		<b>PHOTO 2</b>	



**UELS, LLC**  
 Corporate Office \* 85 South 200 East  
 Vernal, UT 84078 \* (435) 789-1017



**LEGEND:**

- WORKING PAD SURFACE
- PROPOSED ACCESS ROAD
- NORTH FIELD OF VIEW
- EAST FIELD OF VIEW
- SOUTH FIELD OF VIEW
- WEST FIELD OF VIEW
- STANDING POINT
- LOCATION STAKE



**UELS, LLC**  
 Corporate Office \* 85 South 200 East  
 Vernal, UT 84078 \* (435) 789-1017

**VERDAD RESOURCES, LLC**

**NIGHTHAWK PAD**  
 N 1/2, NW 1/4 SECTION 10, T1N, R64W, 6th P.M.  
 WELD COUNTY, COLORADO

SURVEYED BY	ORION RICE	08-15-23	SCALE
DRAWN BY	K.C.	09-15-23	1" = 500'

**LOCATION PHOTOS**

**AERIAL**