



CEMENT BOND LOG  
GAMMA-RAY  
CCL

Company RED MESA HOLDINGS O&G LLC					
Well TURNER #4					
Field RED MESA					
County LA PLATA					
State COLORADO Country USA					
Location: API #: 05-067-09773-00 Other Services					
LAT 37.080440 / LONG -108.129930					
SEC 27 TWP 33N RGE 12W					
Permanent Datum GROUND LEVEL Elevation 6567'					
Log Measured From PERM DATUM GROUND LEVEL					
Drilling Measured From GROUND LEVEL					
Date	9-5-2023				
Run Number	ONE				
Depth Driller	3263'				
Depth Logger	3263'				
Bottom Logged Interval	3261'				
Top Log Interval	SURF				
Open Hole Size	N/A				
Type Fluid	WATER				
Density / Viscosity	N/A				
Max. Recorded Temp.	N/A				
Estimated Cement Top	SEE LOG				
Time Well Ready	ROA				
Time Logger on Bottom	11:00				
Equipment Number	8042				
Location	FARMINGTN NM				
Recorded By	S. TILLEN				
Witnessed By	BILL WADE				
Borehole Record					
Run Number	Bit	From	To	Size	Tubing Record
					Weight
					From
					To
Casing Record	Size	Wgt/Ft	Top	Bottom	
Surface String	8-5/8"	24	SURF	312'	
Prot. String	4.5"	11.6	SURF	3513'	
Production String					
Liner					

<<< Fold Here >>>

All interpretations are opinions based on inferences from electrical or other measurements and we cannot and do not guarantee the accuracy or correctness of any interpretation, and we shall not, except in the case of gross or willful negligence on our part, be liable or responsible for any loss, costs, damages, or expenses incurred or sustained by anyone resulting from any interpretation made by any of our officers, agents or employees. These interpretations are also subject to our general terms and conditions set out in our current Price Schedule.

## Comments

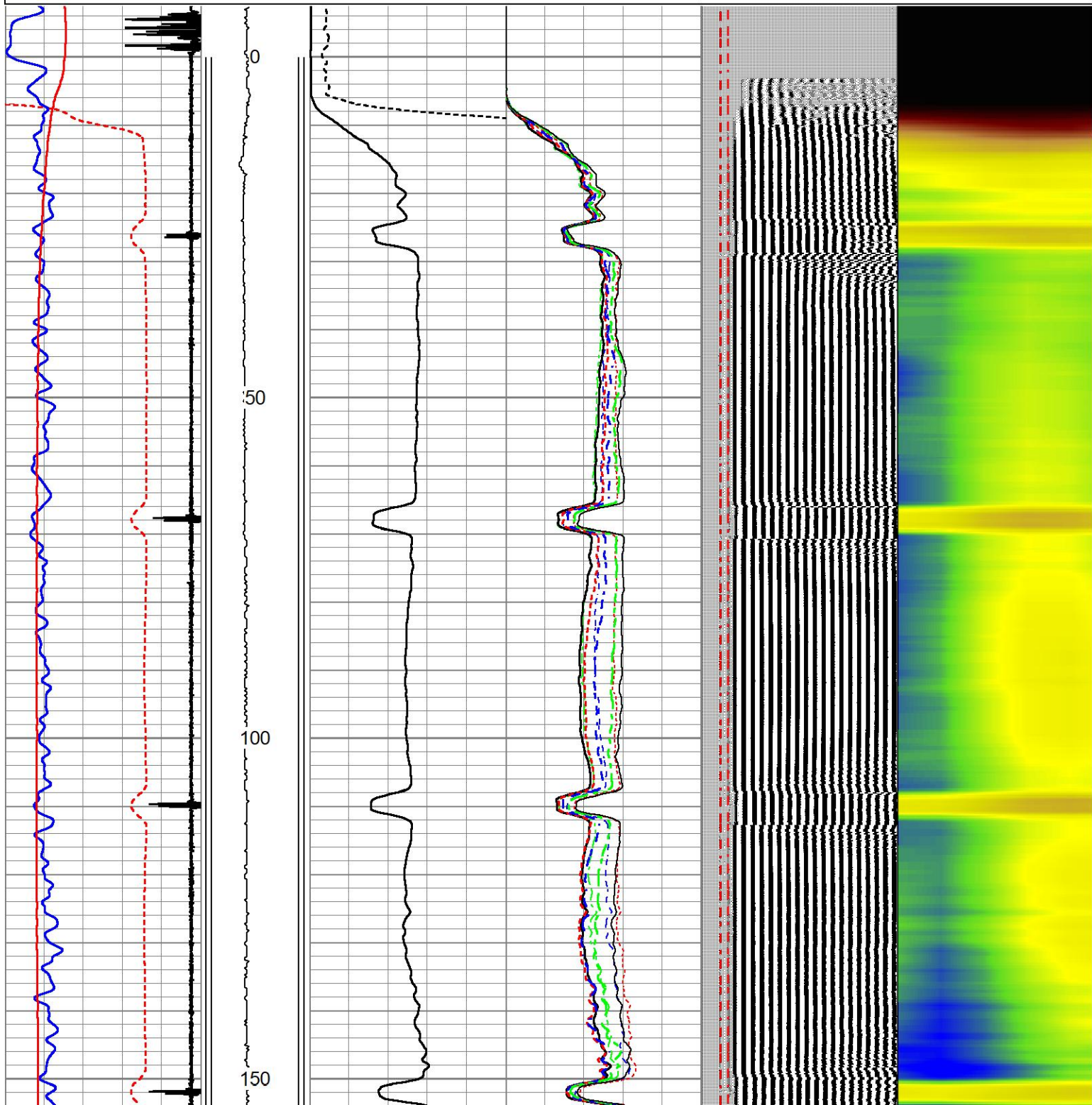
LOG WAS RAN ON WIRLINE MEASUREMENTS USING GROUND LEVEL FOR ZERO.



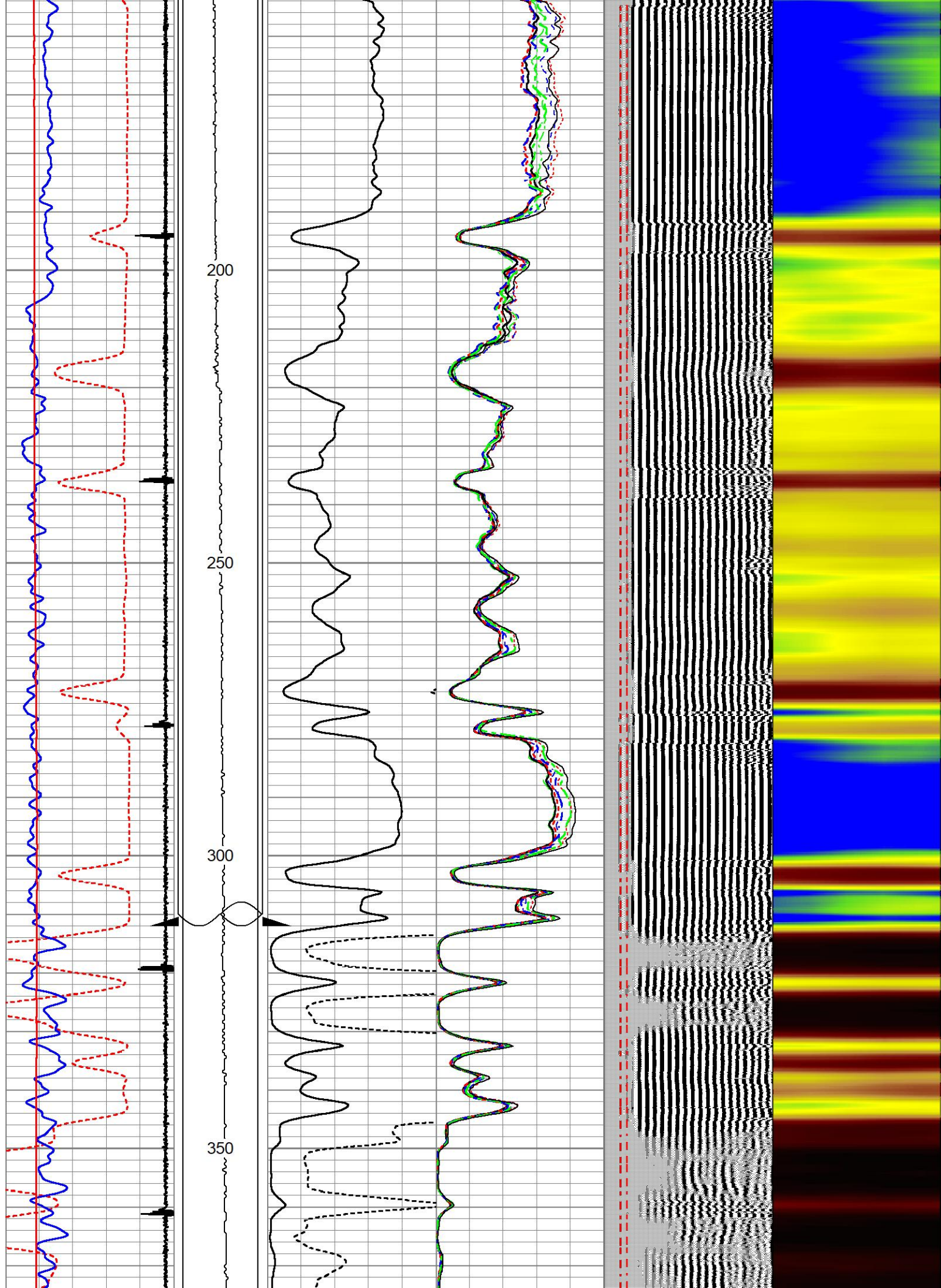
# MAIN PASS 0 PSI

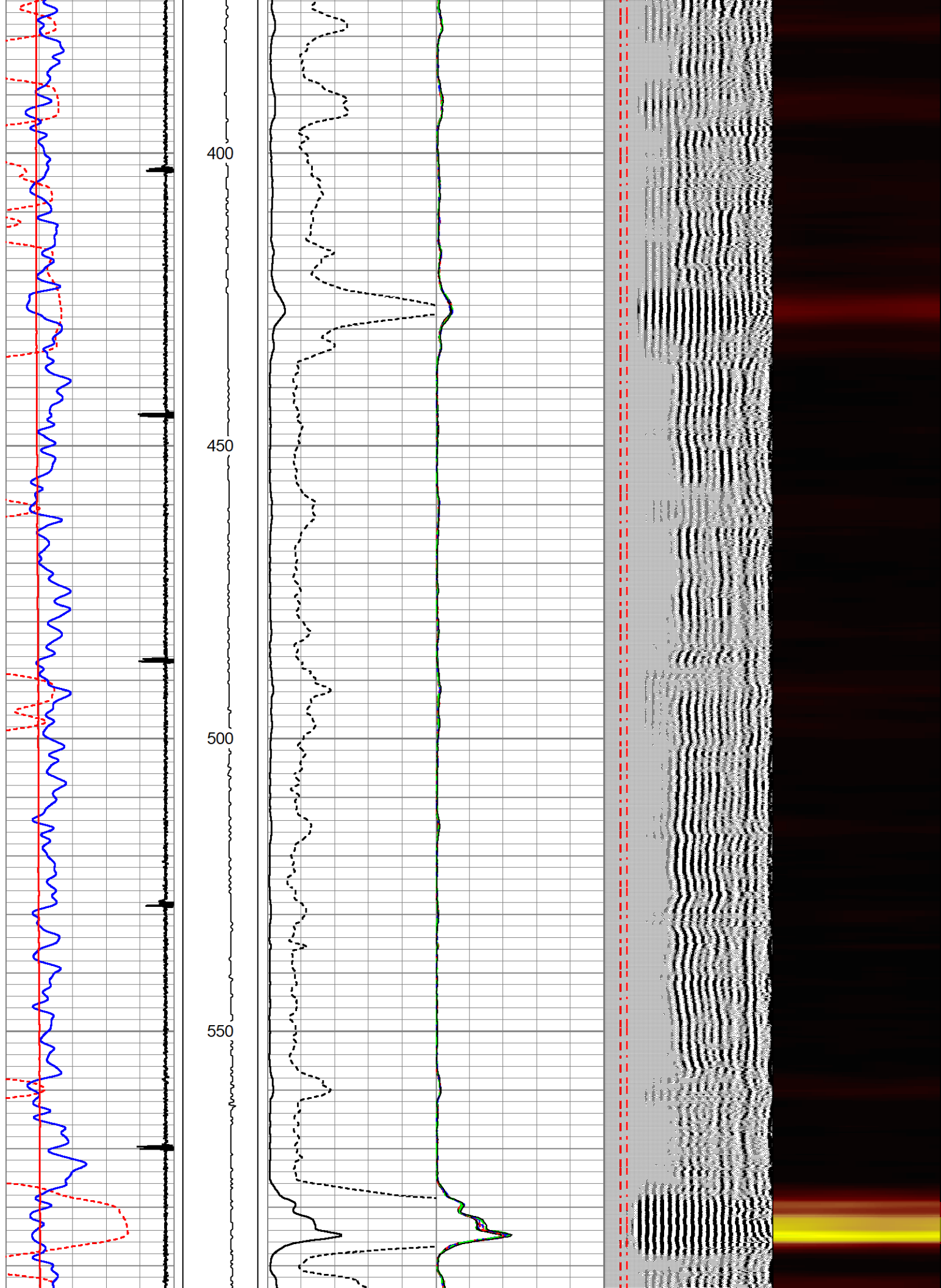
red\_mesa\_turner\_4\_cbl.db  
pass7  
chris sbt  
Tue Sep 05 14:31:01 2023  
Depth in Feet scaled 1:240

320	TT (usec)	220	LTEN	0	AMP (mV)	100	0	AMPS2	150	200	VDL (usec)	1200	1	Cement Map	5
0	GR (GAPI)	200		0	(lb)	500	0	AMPx10 (mV)	10	0	AMPS3	150			
-20	CCL\$1	1						0	AMPS4	150	<div>Free Pipe Gate</div>				
GCT_Temp								0	AMPS5	150					
50	(degF)	150						0	AMPS6	150					
								0	AMPS7	150					
								0	AMPS8	150					
								0	AMPS1	150					

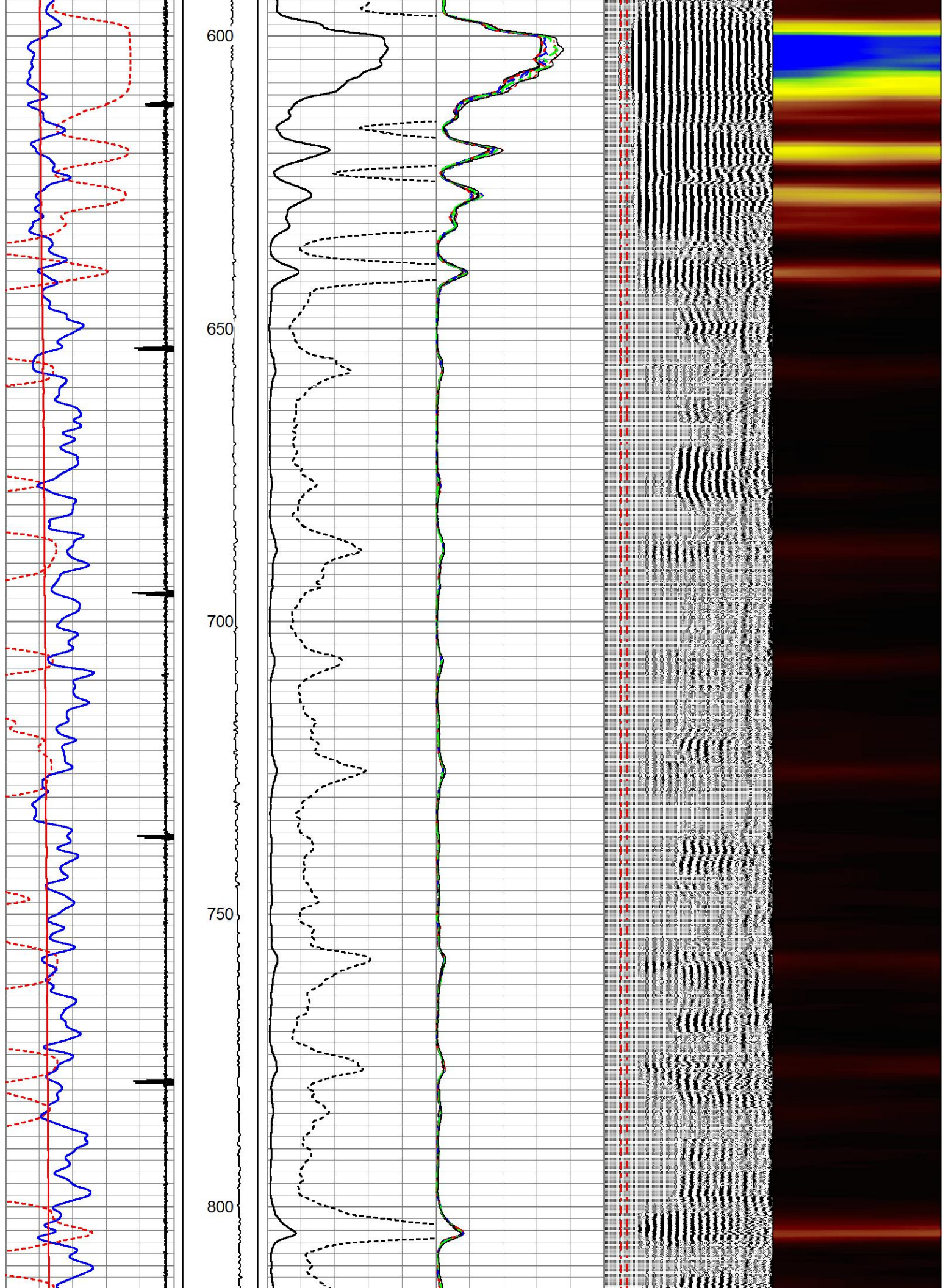




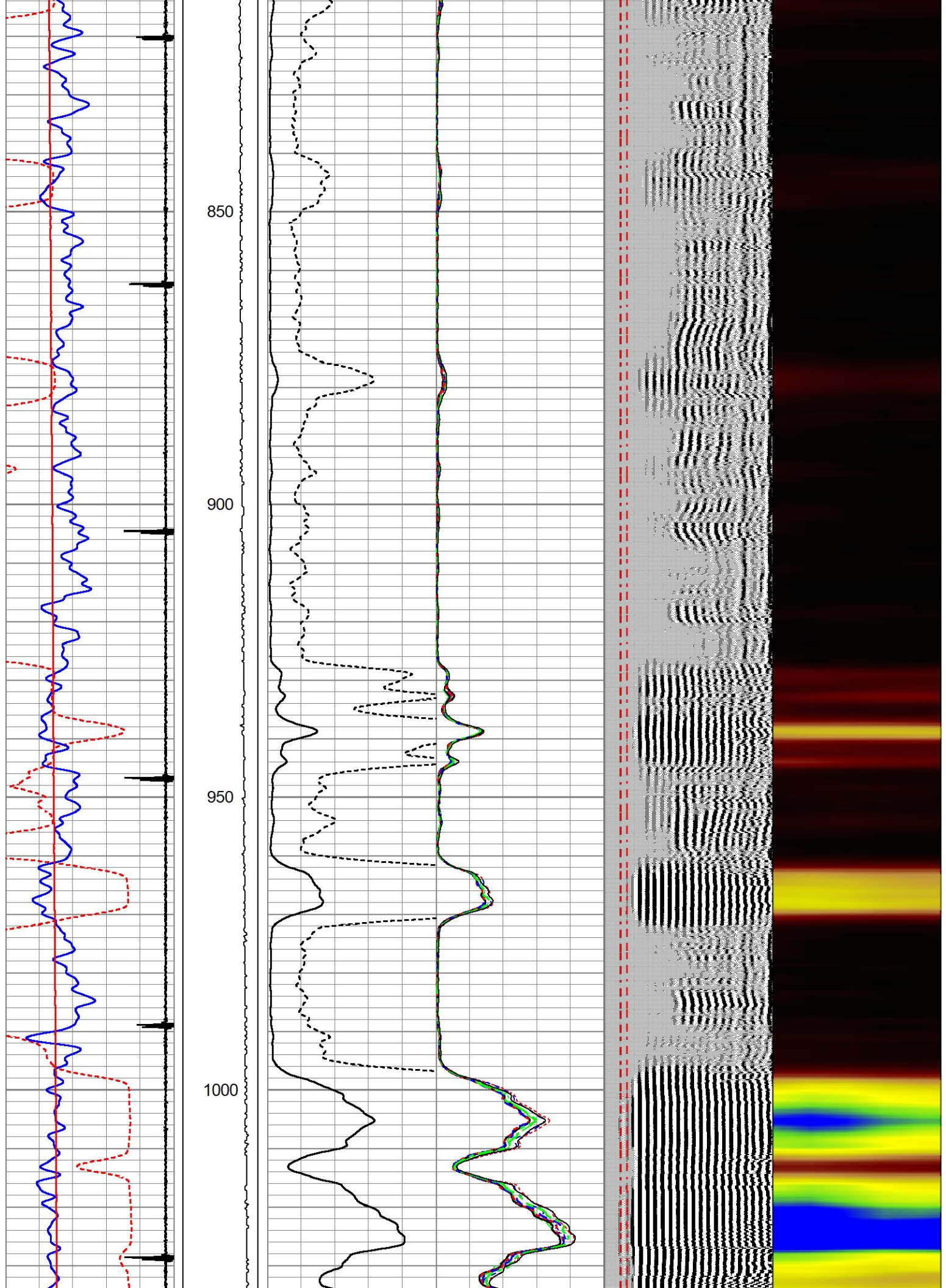




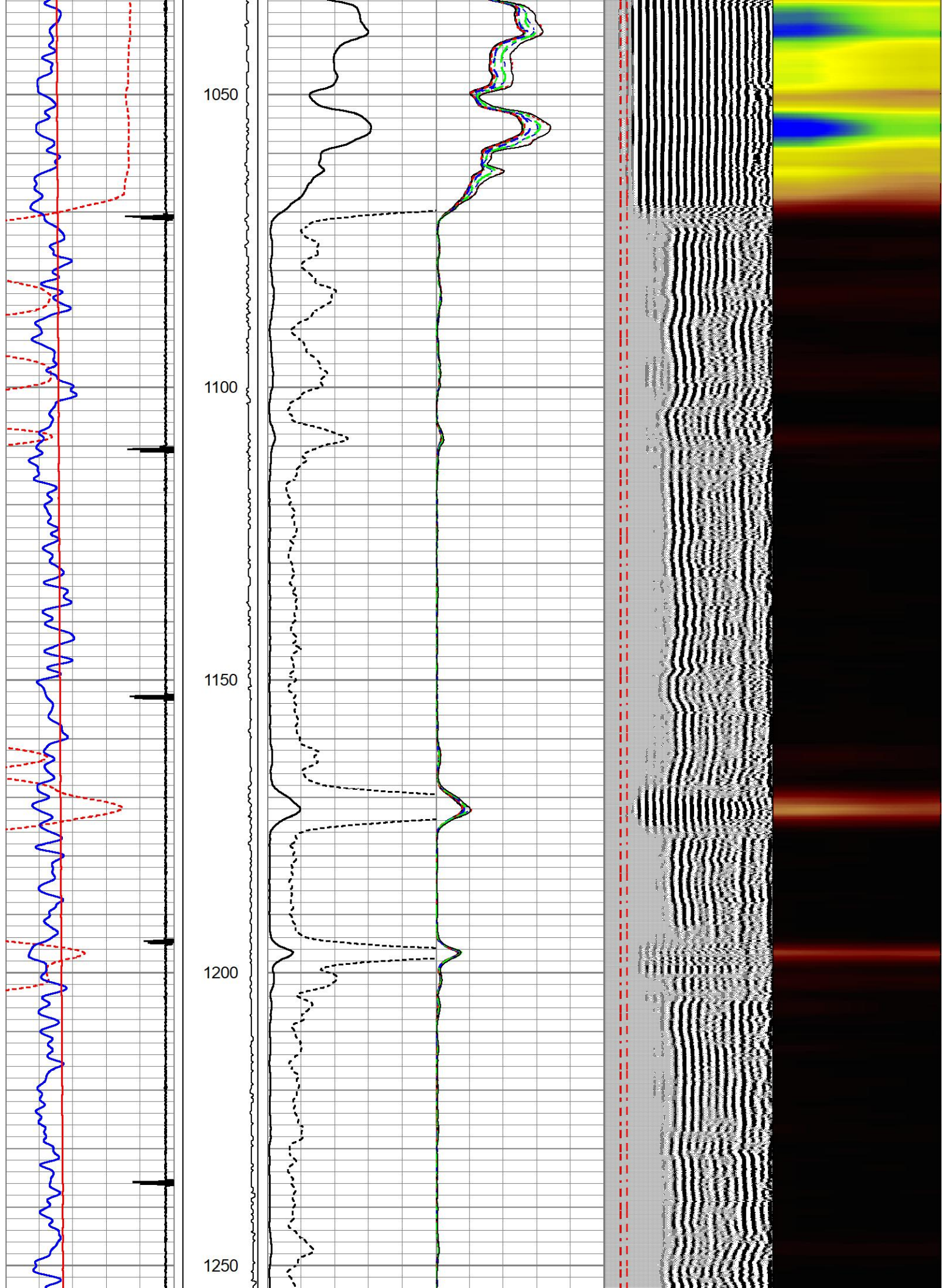


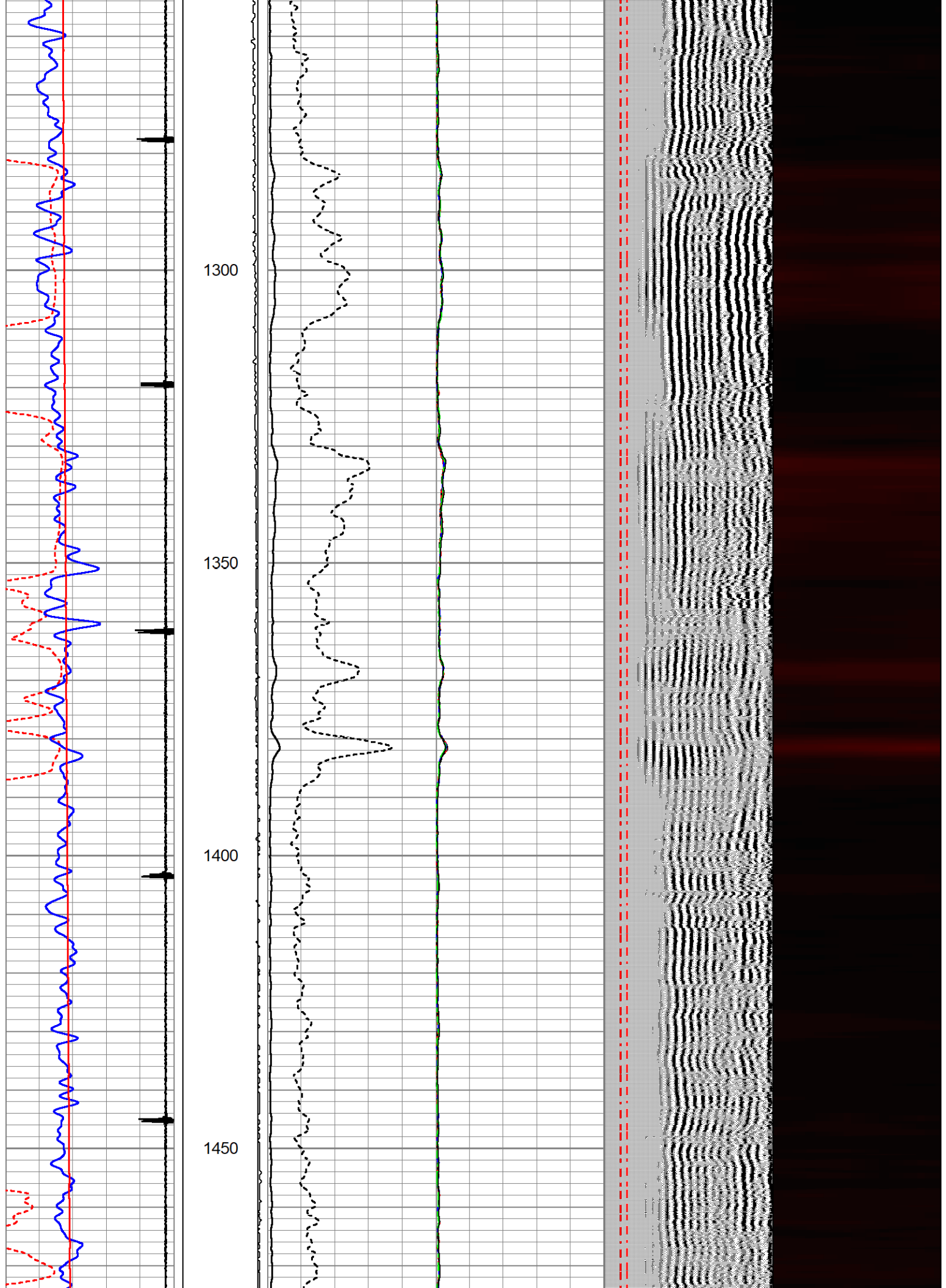




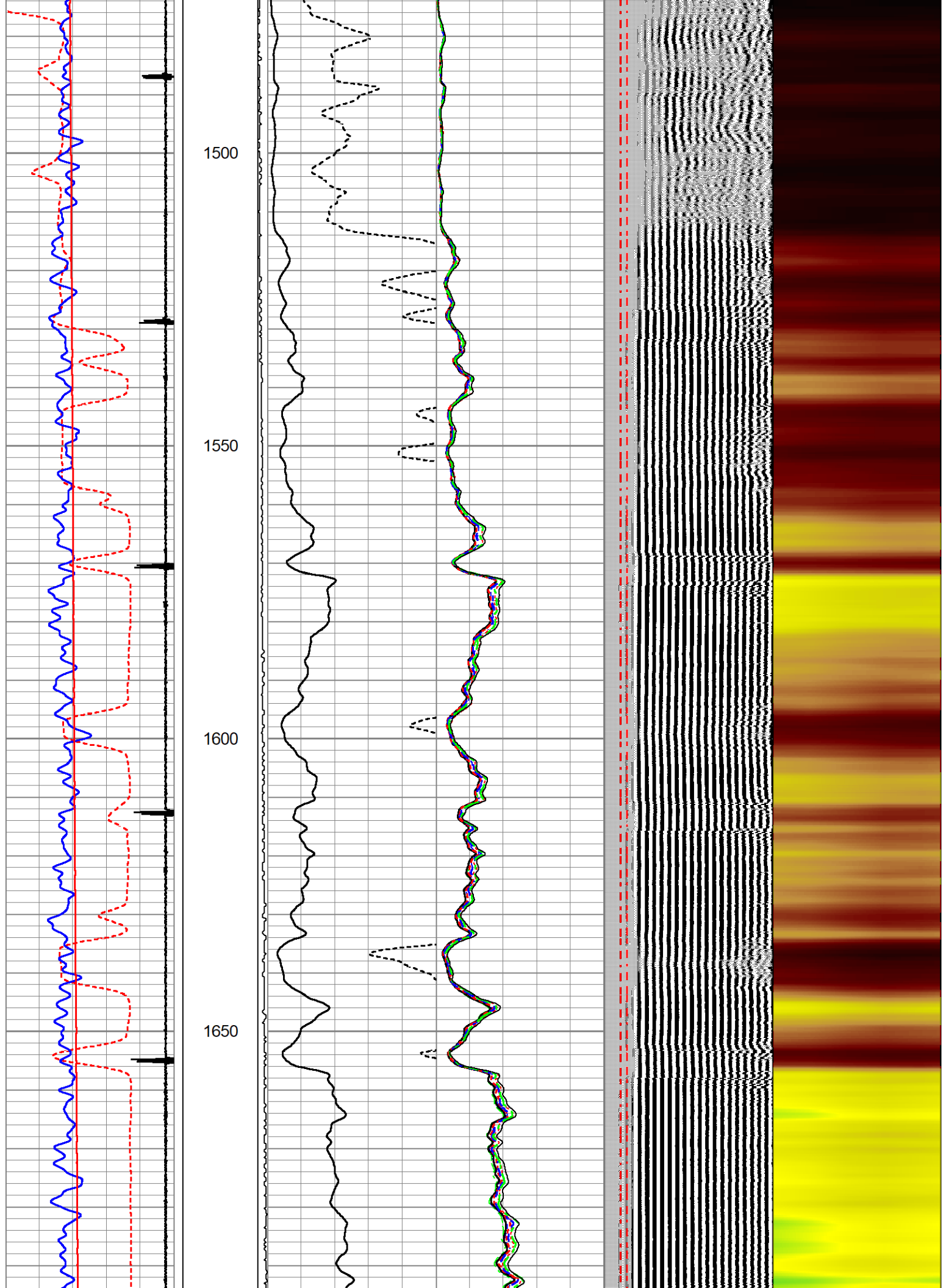


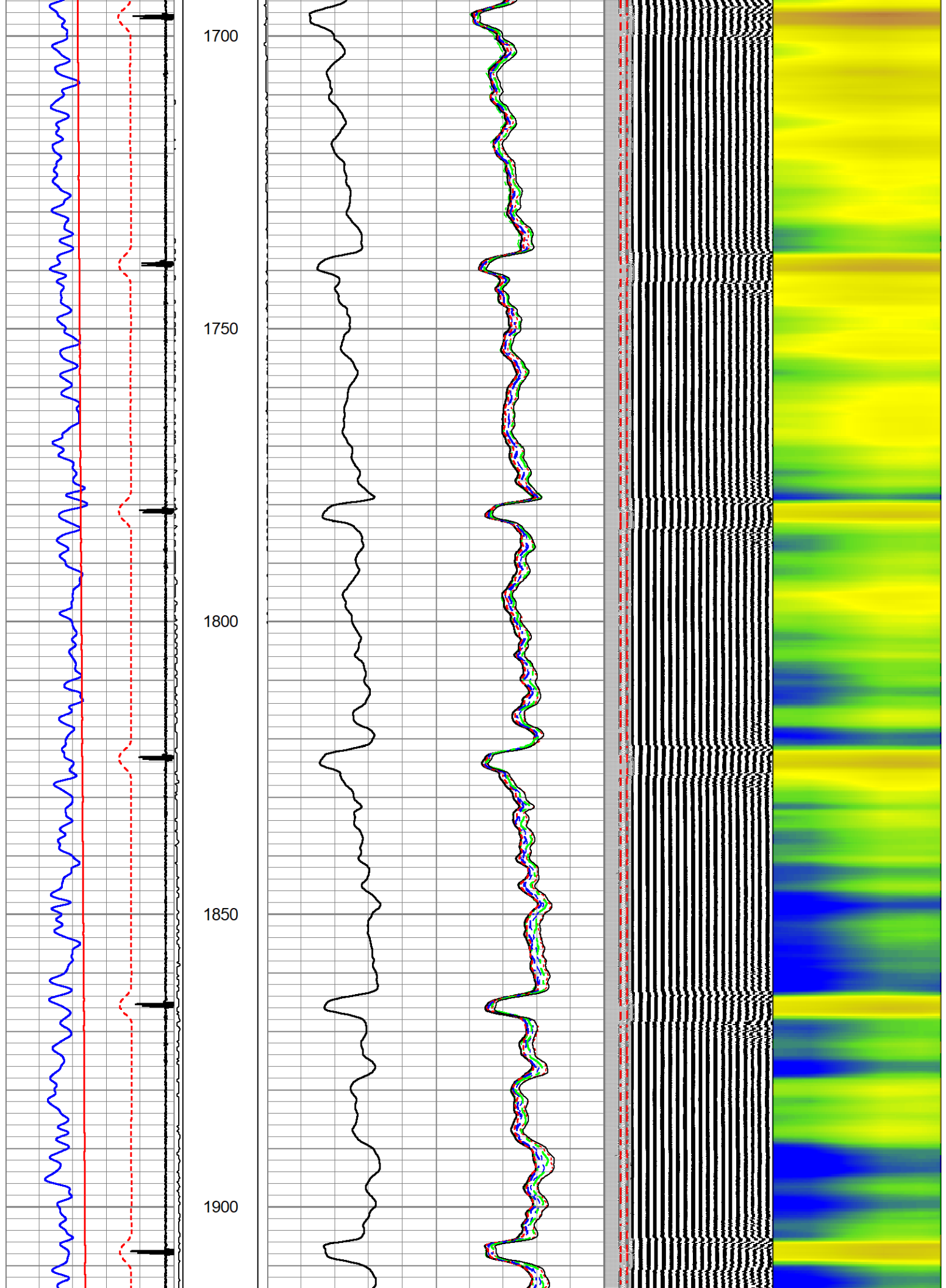




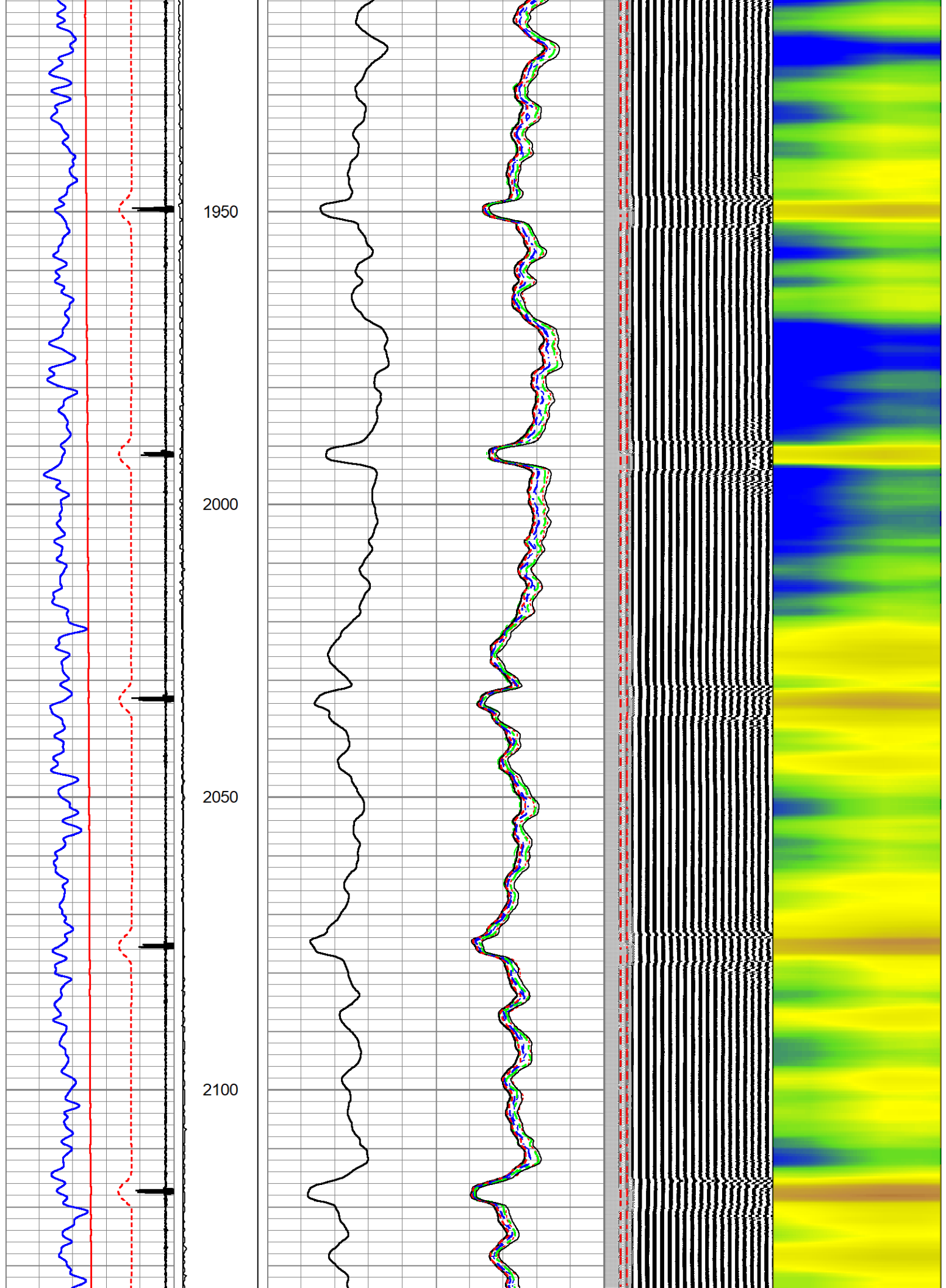


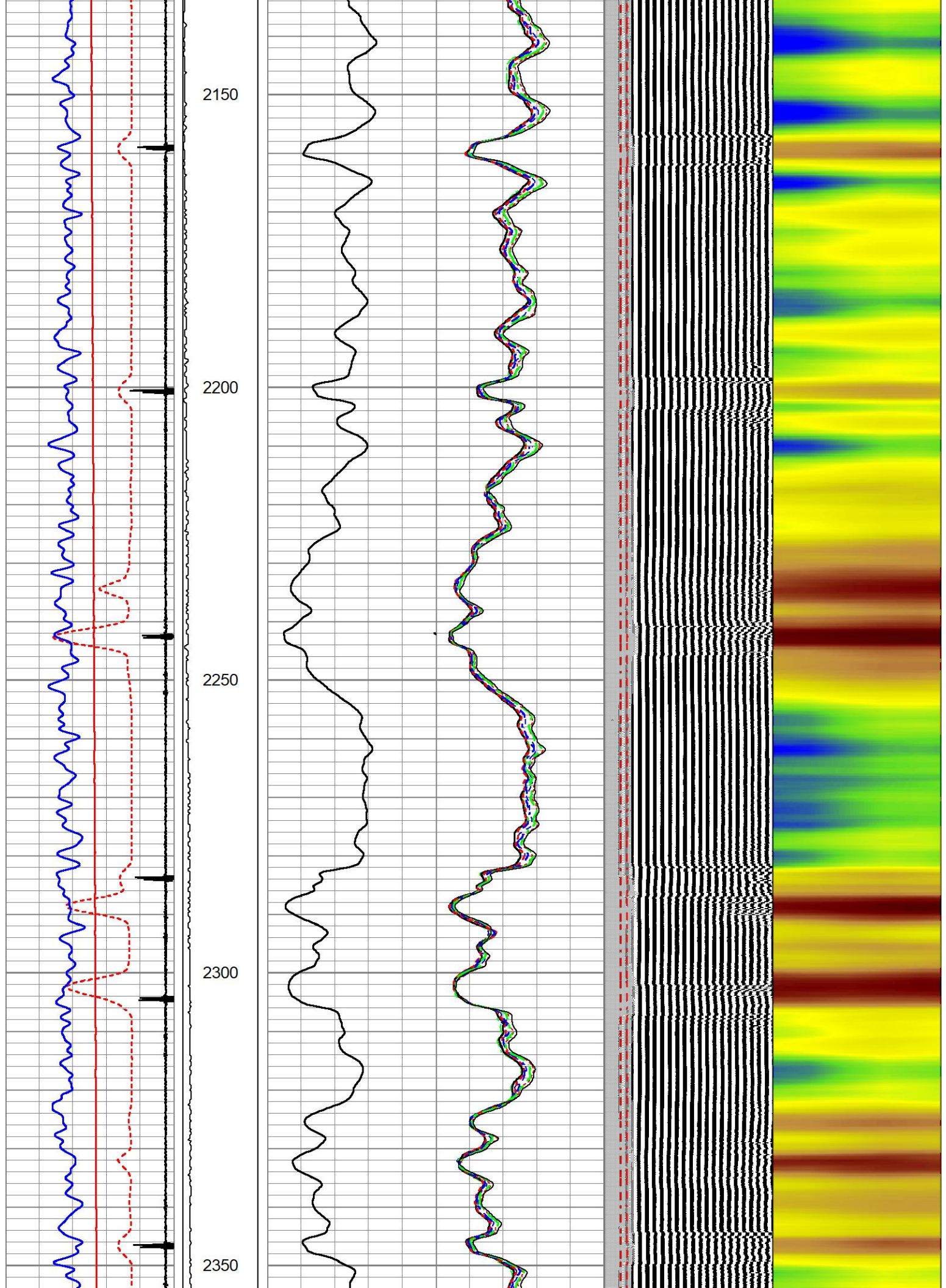




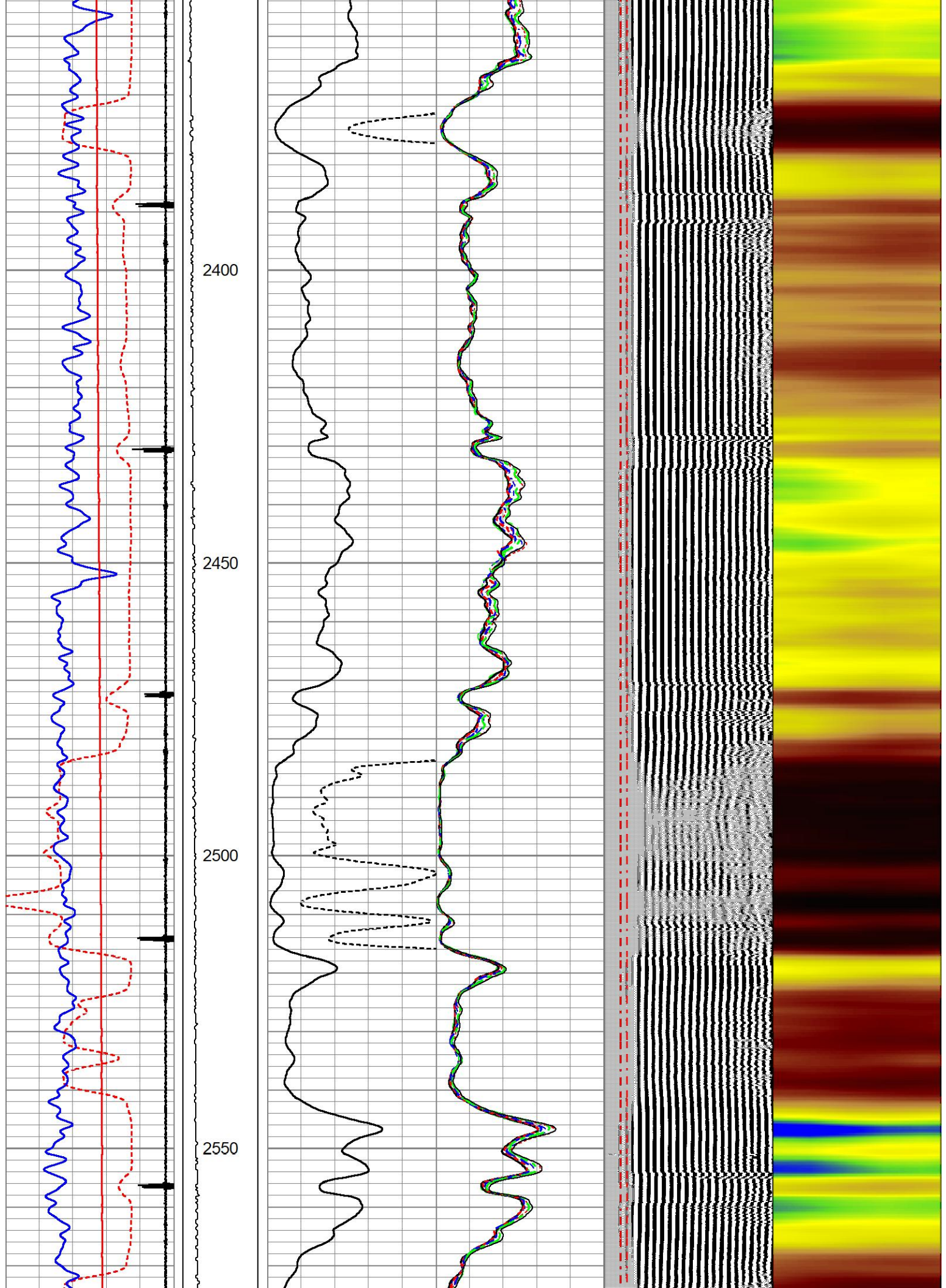




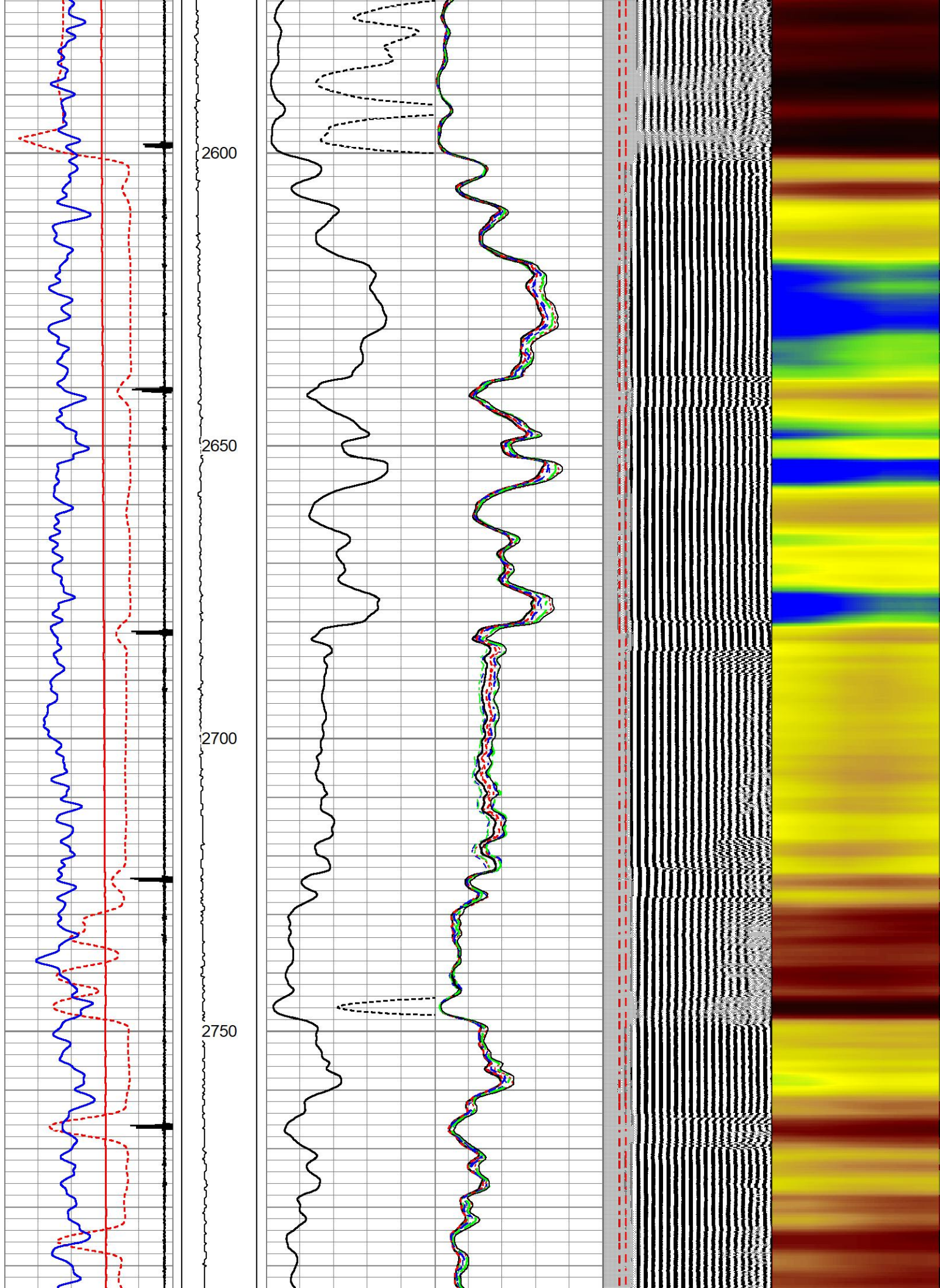




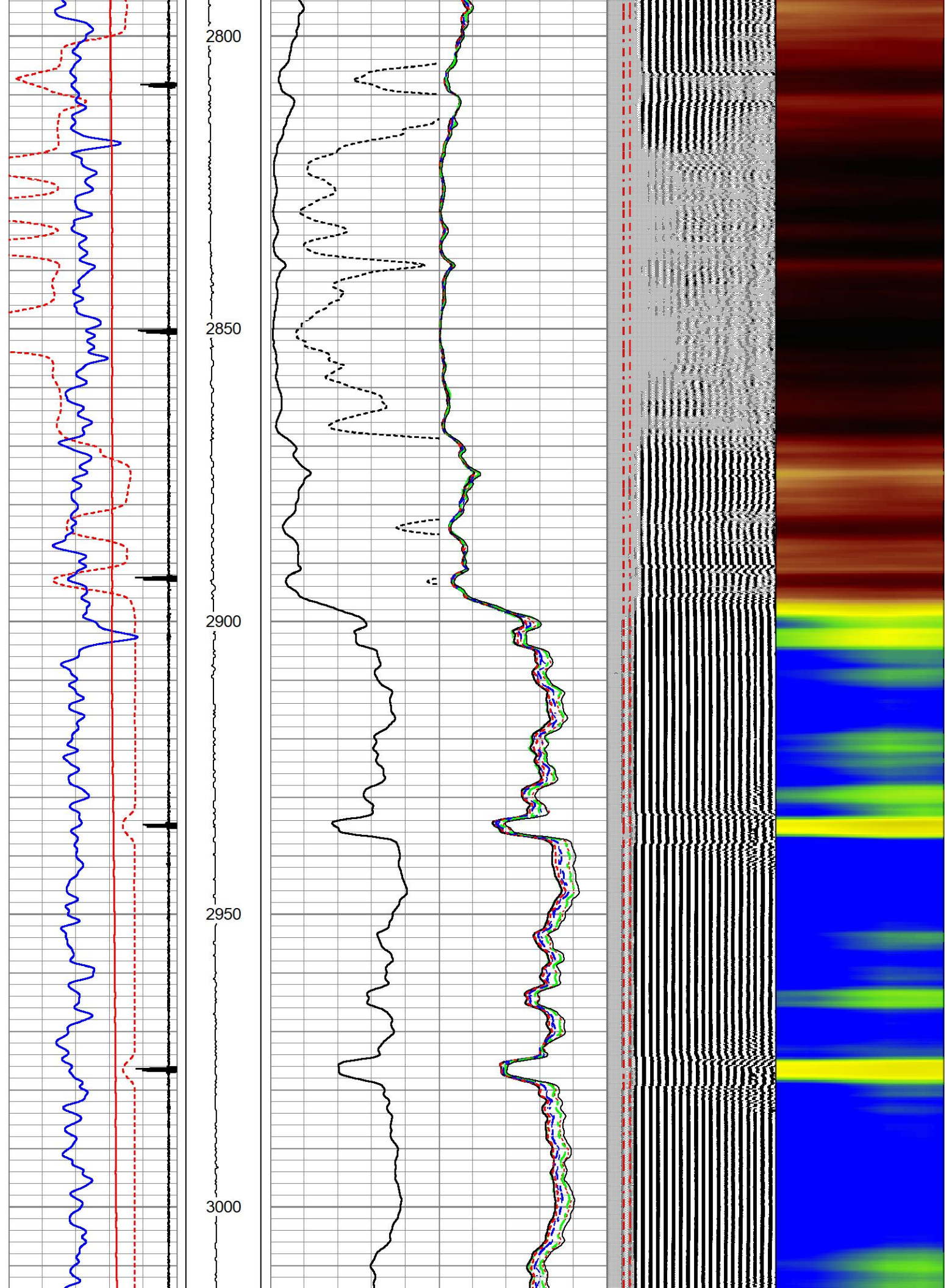




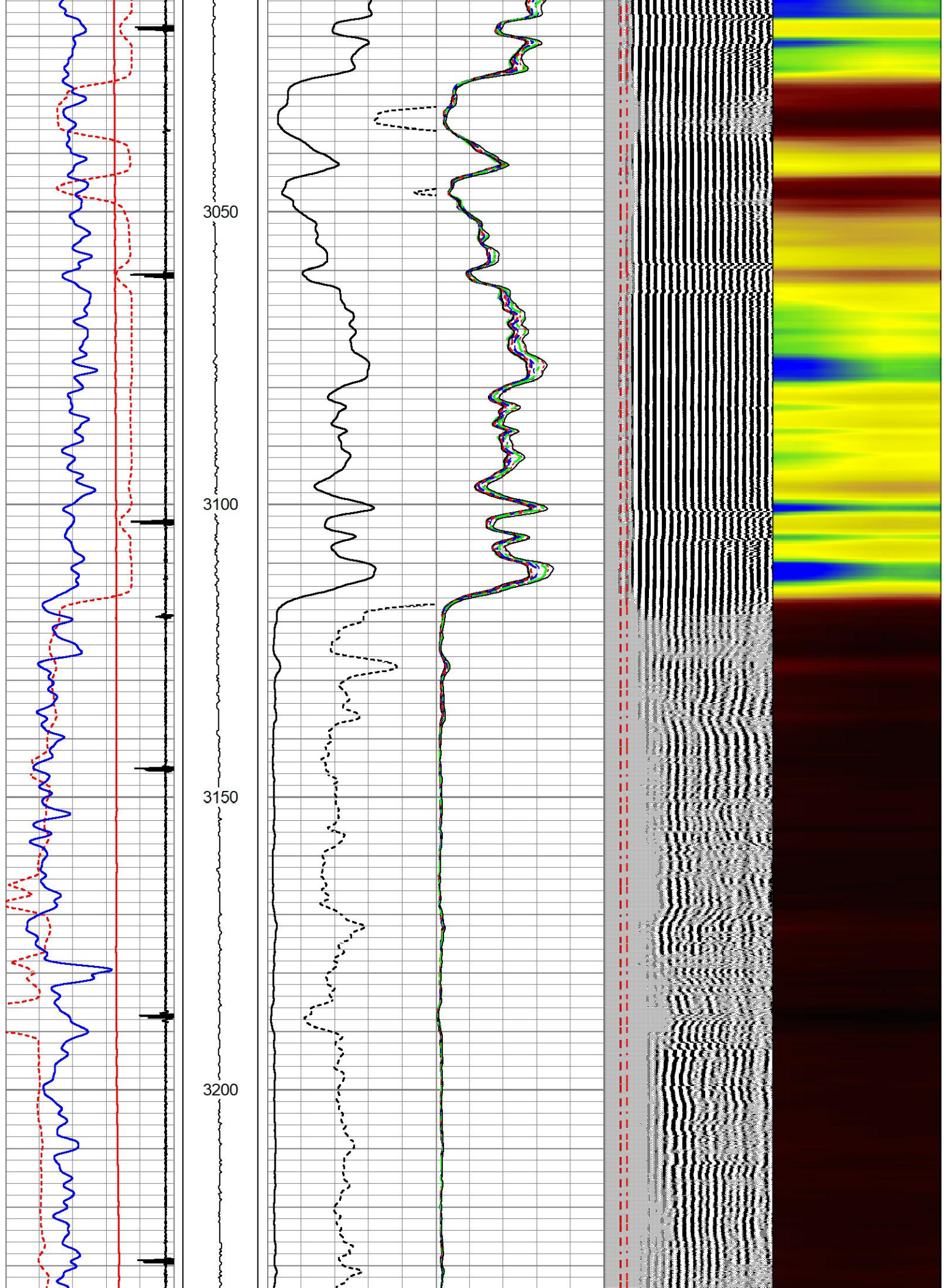




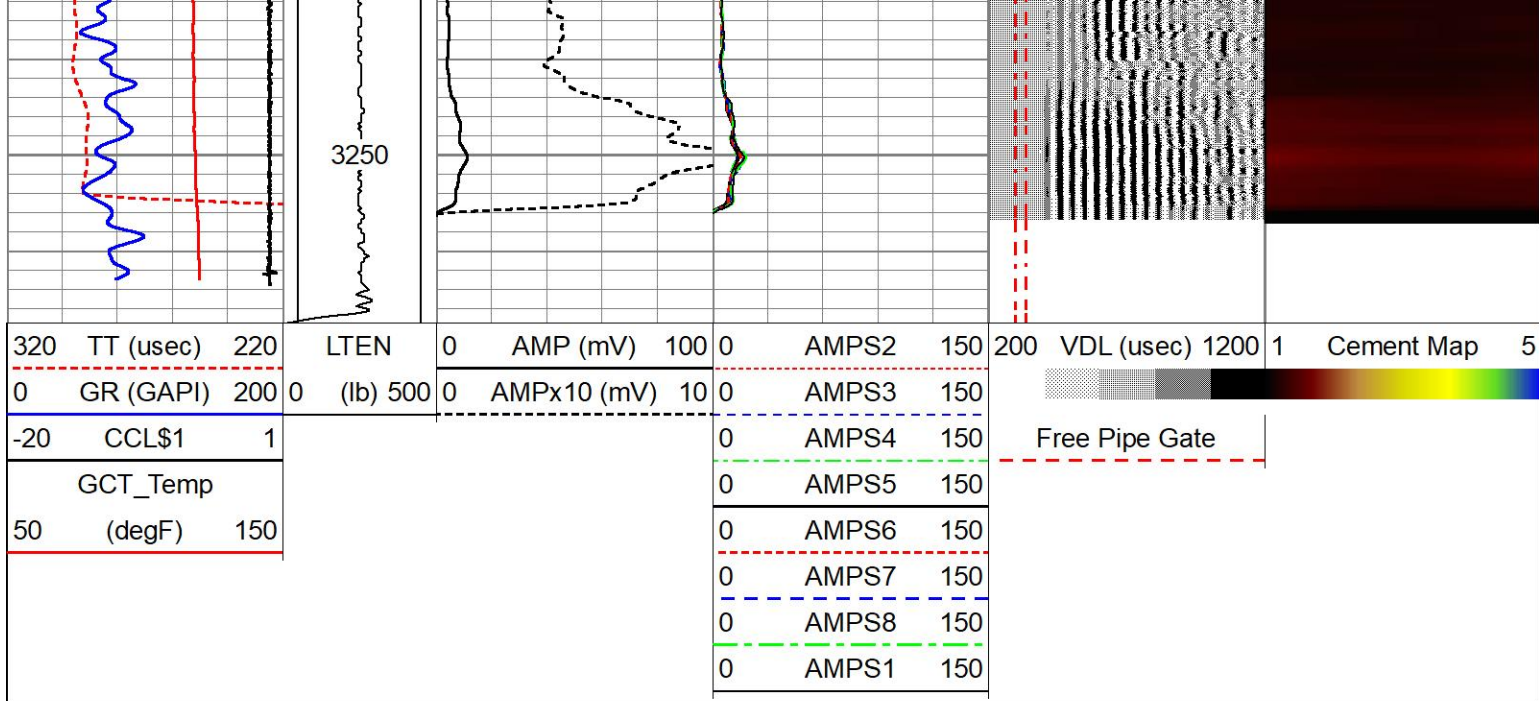










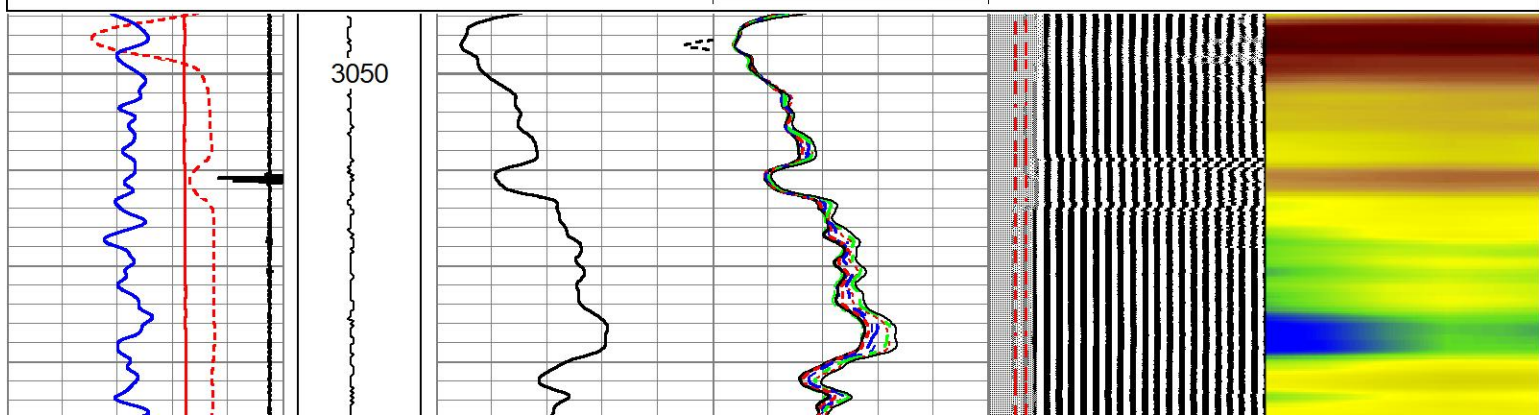
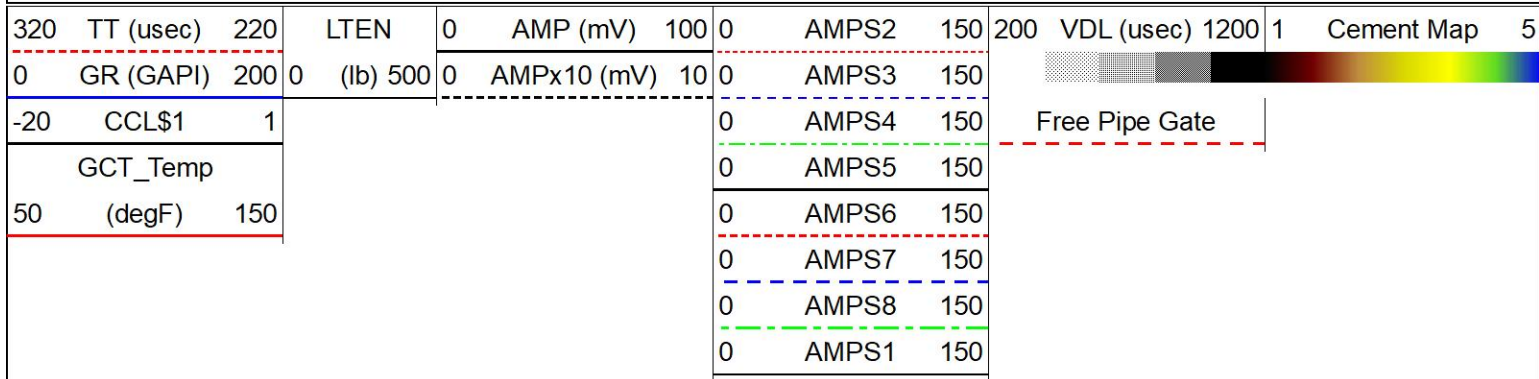


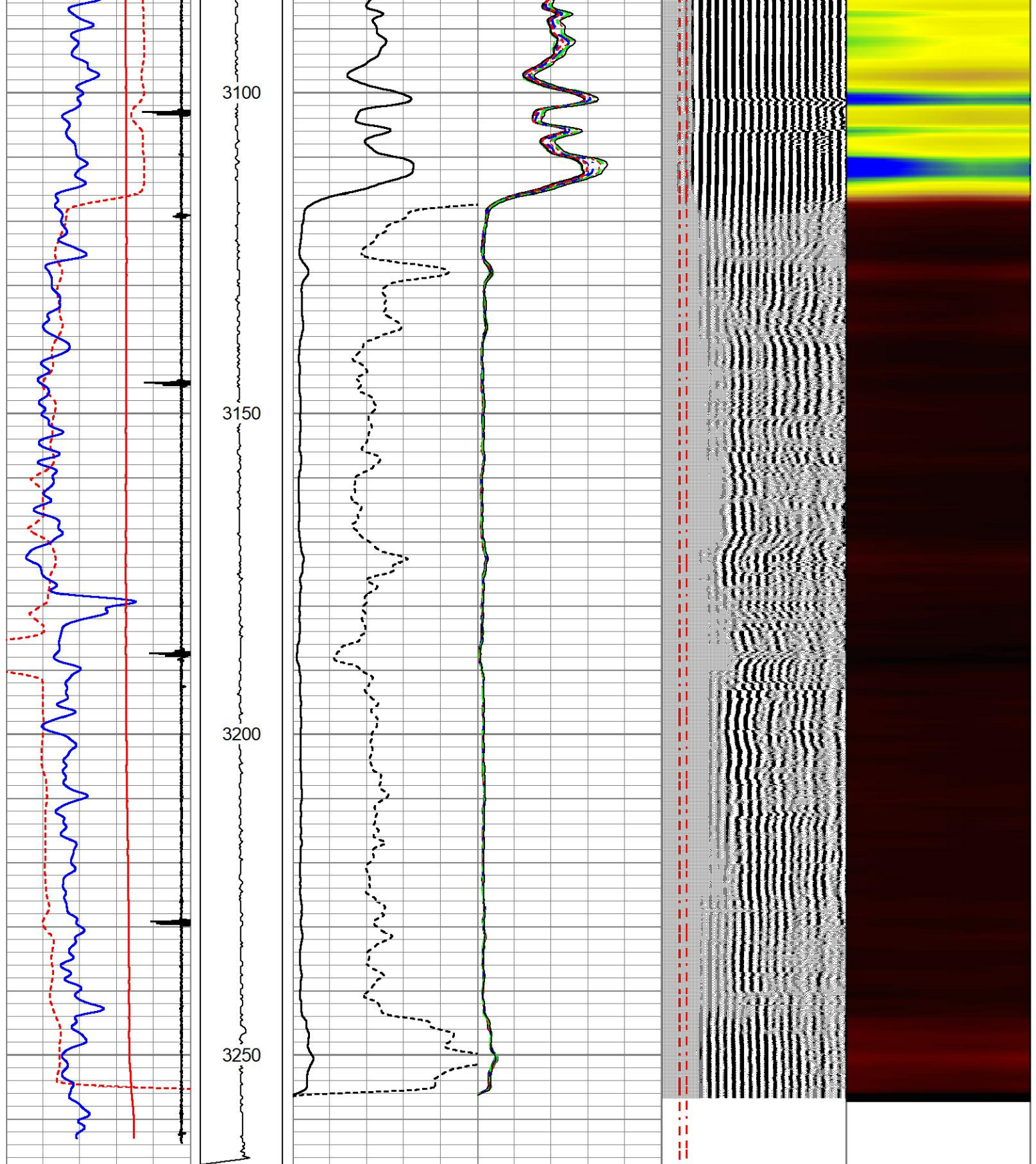
## MAN PASS 0 PSI



## REPEAT PASS 0 PSI

Database File red\_mesa\_turner\_4\_cbl.db  
 Dataset Pathname pass6  
 Presentation Format chris sbt  
 Dataset Creation Tue Sep 05 14:23:49 2023  
 Charted by Depth in Feet scaled 1:240





320	TT (usec)	220	LTEN	0	AMP (mV)	100	0	AMPS2	150	200	VDL (usec)	1200	1	Cement Map	5
0	GR (GAPI)	200	0	(lb)	500	0	AMPx10 (mV)	10	0	AMPS3	150				
-20	CCL\$1	1							0	AMPS4	150				
	GCT_Temp								0	AMPS5	150				
50	(degF)	150							0	AMPS6	150				
									0	AMPS7	150				
									0	AMPS8	150				
									0	AMPS1	150				

Free Pipe Gate



# REPEAT PASS 0 PSI

## Log Variables

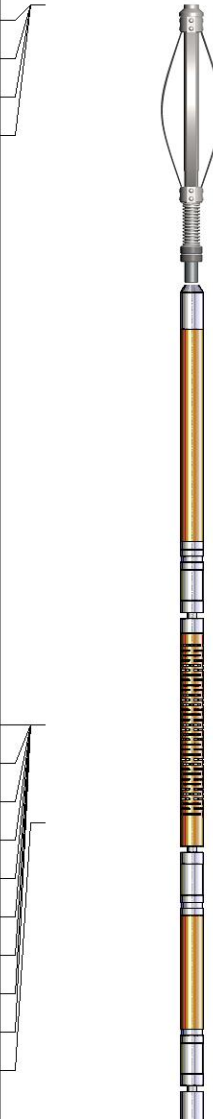
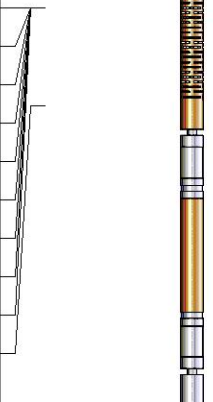
DatabaseC:\ProgramData\Warrior\Data\red\_mesa\_turner\_4\_cbl.db  
Dataset field/well/run1/pass7/\_vars\_

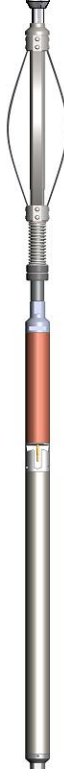


### Top - Bottom

BOREID in 4	BOTTEMP degF 100	CASEOD in 4.5	CASETHCK in 0.25	CASEWGHT lb/ft 11.6	MAXAMPL mV 81	MINAMPL mV 1	MINATTN db/ft 0.8
PERFS No	PPT usec 0	SRFTEMP degF 0	TDEPTH ft 4000				

### Variable Description

BOREID : Borehole I.D.	CASEWGHT : Casing Weight	PERFS : Perforation Flag
BOTTEMP : Bottom Hole Temperature	MAXAMPL : Maximum Amplitude	PPT : Predicted Pipe Time
CASEOD : Casing O.D.	MINAMPL : Minimum Amplitude	SRFTEMP : Surface Temperature
CASETHCK : Casing Thickness	MINATTN : Minimum Attenuation	TDEPTH : Total Depth

Sensor	Offset (ft)	Schematic	Description	Length (ft)	O.D. (in)	Weight (lb)
GCT_FMWR	19.19		CENT-BC275-0000 Probe 2.75" Bowspring Centralizer	2.83	2.75	24.00
mSec_Count	19.19					
RBT_Status	19.19					
Error_Ct	19.19					
WVFS8	11.85		RBT8acc-Probe275acc (100109) 2.75" Radial Corrosion with accelerometer	8.75	2.75	110.00
WVFS7	11.85					
WVFS6	11.85					
WVFS5	11.85					
WVFS4	11.85					
WVFS3	11.85					
WVFS2	11.85					
WVFS1	11.85					
WVF3FT	11.85					
WVF5FT	10.85					

RBT_HV	7.60		CENT-BC275-0000 Probe 2.75" Bowspring Centralizer	2.83	2.75	24.00				
RBT_ACCZ	7.60									
RBT_ACCY	7.60									
RBT_ACCX	7.60									
WVFSYNC	7.60									
WVFCAL	7.60									
GCT_HV	4.76		GCT_acc-50-GCT275-0000 (FW1306-08) Probe 2.75" Gamma Ray - CCL w/Temp (Single Pin)	4.77	2.75	55.00				
CCL\$2	3.81									
CCL\$1	3.81									
GCT_Temp	3.26									
GR	2.39									
GCT_IntTemp	1.67									
GCT_ACCZ	0.00									
GCT_ACCY	0.00									
GCT_ACCX	0.00									
Dataset: red_mesa_turner_4_cbl.db: field/well/run1/pass7 Total length: 19.19 ft Total weight: 213.00 lb O.D.: 2.75 in										

Company	RED MESA HOLDINGS O&G LLC				
Well	TURNER #4				
Field	RED MESA				
County	LA PLATA		State	COLORADO	
			CEMENT BOND LOG GAMMA-RAY CCL		